

UNIMARK
SPORTSCITY
SPORTS THEMED LIVING



WELCOME TO A WORLD OF SPORTS CALLED HOME

What if life gives you a chance to be a true sports enthusiast and explore possibilities?
What if you could discover your passion and do the things you love everyday?
What if you could live life more consciously each day?
Come, feel alive. Let your heart race.
In a life of your dreams. And in a world that lets you be yourself.

Welcome to the world extraordinaire.
Welcome to the world of sports.



UNIMARK
SPORTSCITY
SPORTS THEMED LIVING

Phase I offering 2 & 3 BHK Homes

**A WELL PLANNED
CITY OF SPORTS
REDEFINING
YOUR WAY OF LIFE**



KOLKATA'S FIRST SPORTS THEMED RESIDENCES AT BARASAT

Discover a new way of life with a bouquet of excellent amenities at one of the finest locations of Barasat. Step into the world of luxury and grandeur, and follow your heart and intuition. With an outstanding sports avenue and the most modern entertainment facilities, Unimark Sports City is the perfect address for the rest of your life.

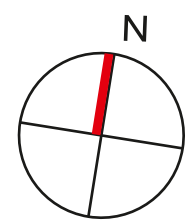
PROJECT HALLMARKS

- Gated Community Living with World-class Sports Facilities
- First-of-its-kind Sports Themed Residential Community Lifestyle Experience
- Uniquely Designed Lifestyle Homes with International Standard Fitments & Fixtures
- Dedicated Spaces for Exclusive Sports Facilities, Family Entertainment & Leisure Activities
- Well-connected to all parts of Kolkata & West Bengal
- Close to Airport, Sector-V, New Town



BARASAT

A FAST FLOURISHING ADDRESS OF KOLKATA



Map not to scale



Connectivity

- Airport – 14.7km
- Barasat Railway Station – 3.2km
- Upcoming Barasat Metro – 3.2km
- Barasat Bus Depot, Champadali – 3.0km
- Sector V – 28.3km



Institutions

- Brainware Management Institute – 1.5km
- Barasat Govt. College – 3.8km
- Central Modern School – 4.0km
- Adamas Knowledge City – 6.1km
- Aditya Academy School – 8.6km
- Barasat University – 10.1km



Hospitals

- Barasat Govt. Hospital – 2.6km
- Disha Eye Hospital – 4.8km
- Narayana Hospital – 5.4km



Entertainment

- Suncity Mall – 2.9km
- Champadali Daily Market – 3.0km
- Jaya Multiplex, City Mall – 4.8km
- Star Mall – 5.6km
- City Center 2 – 17.9km



Utility

- Barasat District Court – 3.1km
- Barasat Post Office – 3.7km
- State Bank Of India – 3.8km

YOUR GATEWAY TO THE WORLD OF SPORTS



**WELL-PITCHED!
THE PERFECT SET-UP FOR SPORTS LOVERS**

MINI FOOTBALL AND CRICKET FIELD





PRACTICE MAKES PERFECT, THEY SAY!

INTERNATIONAL STANDARD NET CRICKET PITCH

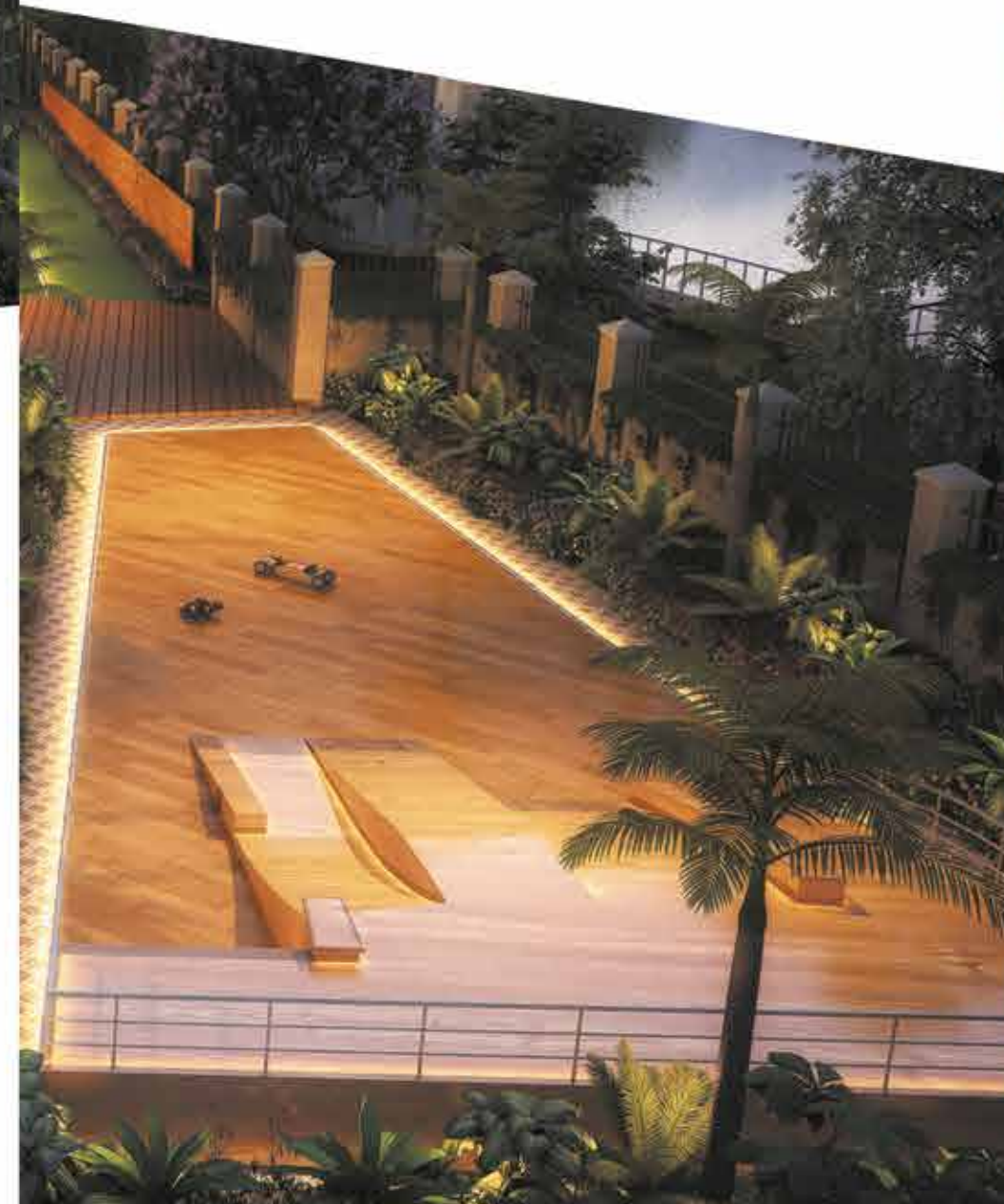
A PLAYFUL INVITATION FROM THE LAWN, TO GET BOWLED OVER BY THE GREENS

LAWN BOWLING



GLIDE TOWARDS THE PATH OF GLORY, MASTER YOUR GAME IN STYLE

DEDICATED AREA FOR SKATING &
SKATE BOARDING



**A BIG PLATFORM IS SET,
WHAT'S YOUR GAME?**

**FLOOD LIT MULTIPURPOSE COURT
FOR BASKETBALL & VOLLEYBALL**





**PLAY AS HARD AS YOU CAN,
LET THE RACKET
DO THE TALKING**

BADMINTON COURT

**GOOD SHOTS GIVE YOU
APPRECIATIONS,
GREAT SHOTS GIVE YOU WINS**

GOLF PUTTING AREA



**TAKE A STAND BEFORE
YOU MOVE,
BEING DEFENSIVE
HERE IS AN ART**

MARTIAL ARTS ZONE





FAMILY'S ENTERTAINMENT HUB

A PLEASURABLE WORLD TO
ENJOY WITH FAMILY & FRIENDS

EXTRAVAGANT CLUB LIFE AND FAMILY RECREATION ARENAS



**BIRTHDAYS, ANNIVERSARIES OR OCCASIONAL PARTIES
HERE EVERY CELEBRATION CREATES A NEW STORY**

BANQUET HALL WITH KITCHEN FACILITY

**GROOM YOUR BODIES, BOOST YOUR IMMUNITY,
A ZONE TO STAY FIT IS NOW HERE FOR YOU**

AIR-CONDITIONED GYMNASIUM WITH MODERN EQUIPMENTS



**TOGETHERNESS
BECOMES A MEMORY,
WHEN YOU ENJOY
PLAYING WITH EVERYONE**

INDOOR GAMES ROOM WITH TABLE TENNIS,
POOL, CARROM, CHESS, CARDS, DARTS &
BOARD GAMES



**CATCH THE BEST OF
CINEMATIC EXPERIENCES,
SITTING RELAXED
BESIDE YOUR HOME**

MINIPLEX WITH SURROUND SOUND



**A PLACE TO MANAGE
YOUR BUSINESS,
A SPACE BESTOWING
MORE FAMILY TIME**

BUSINESS CENTRE WITH
CONFERENCE FACILITY



**WHEN THE REAL WORLD
GIVES YOU STRAINS,
TIME TO SWITCH TO VIRTUAL**

VIRTUAL GAMING ZONE

**A SPECIAL SPACE
FOR THE BUDDING
MINDS**

TODDLER'S PLAY ROOM & CRÈCHE



**UNLEASH YOUR
HIDDEN TALENTS
& SPECIAL HOBBIES
WHENEVER YOU WANT**

HOBBY & ACTIVITY CENTRE



**WHEN THE DAY
IS LONG
AND THE SUN
IS FINALLY DOWN**

ROOFTOP BARBEQUE



**YOUR ELDERS NEED
THEIR SPACE TO EXPRESS**

ADDA ZONE FOR SENIOR CITIZENS

**A PRIVILEGE FOR
THE HOMEMAKERS,
SHOPPING COMES HOME**

SHOPPING ARCADE AND OLYMPIA - THE CLUB



HEALTH & WELLNESS

A SOUND MIND RESIDES
IN A SOUND BODY

A PLETHORA OF HEALTH, WELLNESS & REJUVENATION AMENITIES



**THE GREENERY KEEPS YOU ENCHANTED,
FOR BEST CONVERSATIONS TO
CONTINUE FOREVER**

GARDEN PAVILION WITH SCULPTURES AND FLOWERBEDS



**ADVENTURE HOURS
FOR YOUR LITTLE ONES,
HAPPY MOMENTS FOR YOU**

CHILDREN'S PLAY AREA WITH ROCK CLIMBING,
SWINGS, SLIDES & SAND PIT

REFRESH AND REJUVENATE YOUR SENSES
LET THE REFLECTIONS RENDER A NEW TAKE ON LIFE

ROOFTOP INFINITY-EDGE SWIMMING POOL



**RETURN BACK
TO RELAXATION,
LET GO OF
ALL YOUR WORRIES**

SPA WITH THERAPEUTIC MASSAGE ROOM



**YOGA IS AN ART,
TO SEARCH YOUR
INNER SELF**

YOGA & MEDITATION LAWN



**RUN FOR HEALTH
AND HEART,
MAKE IT YOUR
DAILY ROUTINE**

JOGGING TRACK



**RIDE ON THE
POSITIVE THOUGHTS,
BRING THE WELLNESS
IN LIFE**

CYCLING TRACK



**PUSH HARDER THAN YESTERDAY,
IF YOU WANT A HEALTHY TOMORROW**

OUTDOOR FITNESS AREA, REFLEXOLOGY PATHWAY & COZY CABANAS

MASTER PLAN



PHASE I

- 1 Olympia Club & Retail Hub
- 2 Mini Cricket & Football Field
- 3 Jogging Track
- 4 Cycling Track
- 5 Lawn Bowling
- 6 Golf Putting Area

PHASE II

- 7 Volleyball Court cum Basketball Court
- 8 Children Play Area
- 9 Outdoor Fitness Area
- 10 Garden Pavilion
- 11 Reflexology Pathway
- 12 Seating Area for Aged People
- 13 Landscaped Deck
- 14 Badminton Court
- 15 Adda Zone
- 16 Yoga/Meditation Lawns



PHASE - 1 | TYPICAL FLOOR PLAN - 2 BHK



BLOCKS: 6, 7, 17 & 19

FLATS A, B, C, D, E, F, G, H				
(AREA IN SQ.FT.)				
FLOOR	BUILTUP AREA	CARPET AREA	BALCONY AREA	TERRACE AREA
1ST (A, D, E, H)	580.2	507.3	19.4	50.6
1ST (B, C, F, G)	587.3	506.7	20.4	50.9
2ND TO 7TH (A, D, E, H)	580.2	507.3	19.4	-
2ND TO 7TH (B, C, F, G)	587.3	506.7	20.4	-

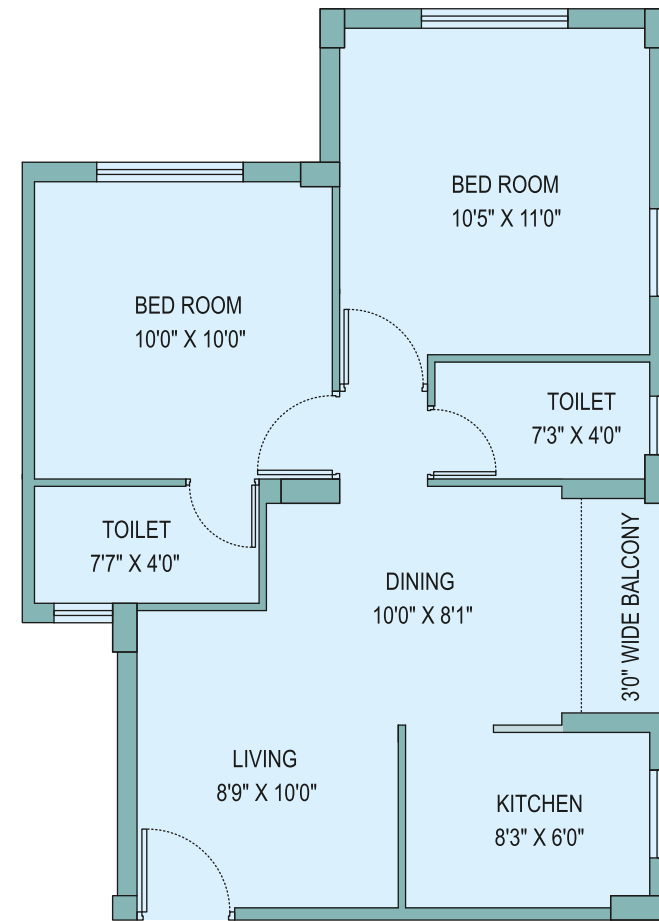
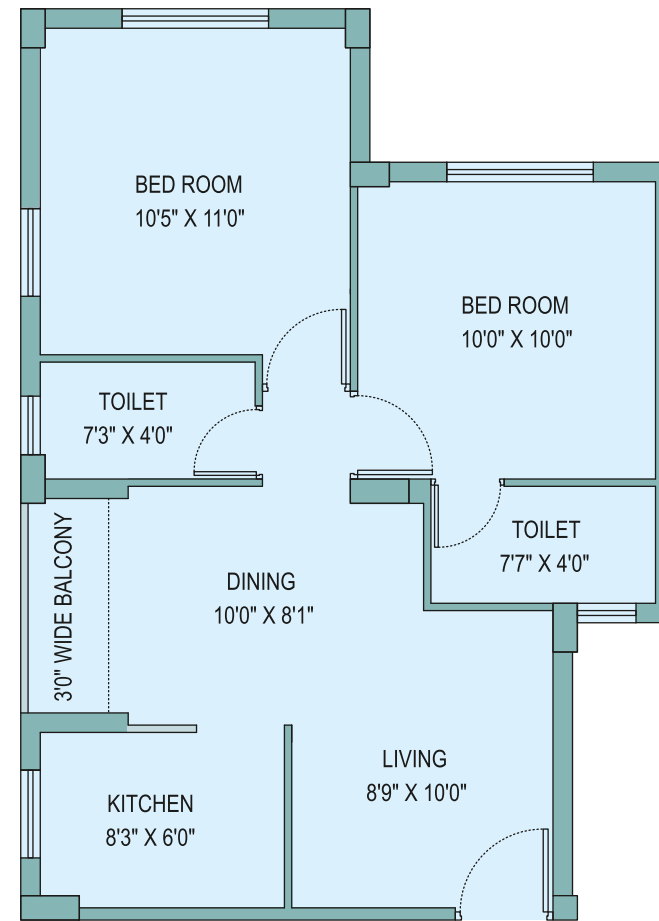
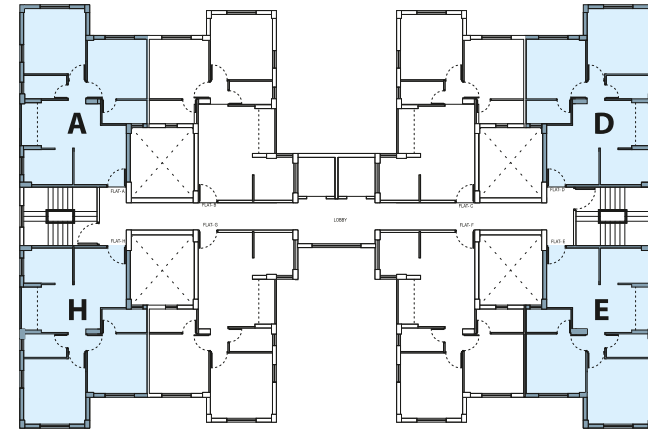
PHASE - 1 | TYPICAL FLOOR PLAN - 3 BHK



BLOCKS: 1, 2, 3, 4, 5, & 18

FLATS A, B, C, D, E, F, G, H (AREA IN SQ.FT.)				
FLOOR	BUILTUP AREA	CARPET AREA	BALCONY AREA	TERRACE AREA
1ST (A, D, E, H)	736.6	636.3	26.1	16.0
1ST (B, C, F, G)	737.9	632.8	29.5	27.7
2ND TO 7TH (A, D, E, H)	736.6	636.3	26.1	-
2ND TO 7TH (B, C, F, G)	737.9	632.8	29.5	-

FLOOR PLAN – 2 BHK



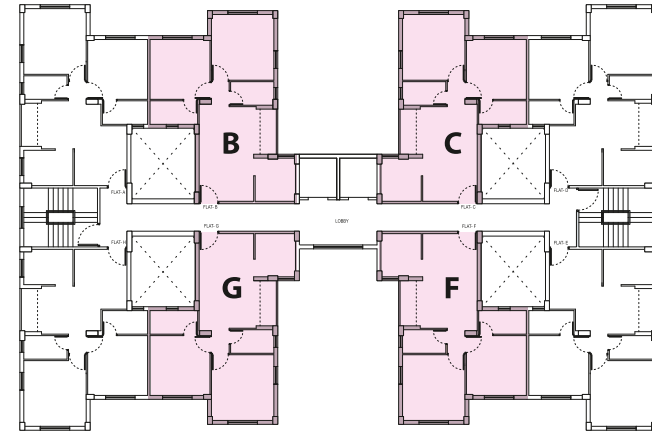
ISOMETRIC PLAN – 2 BHK



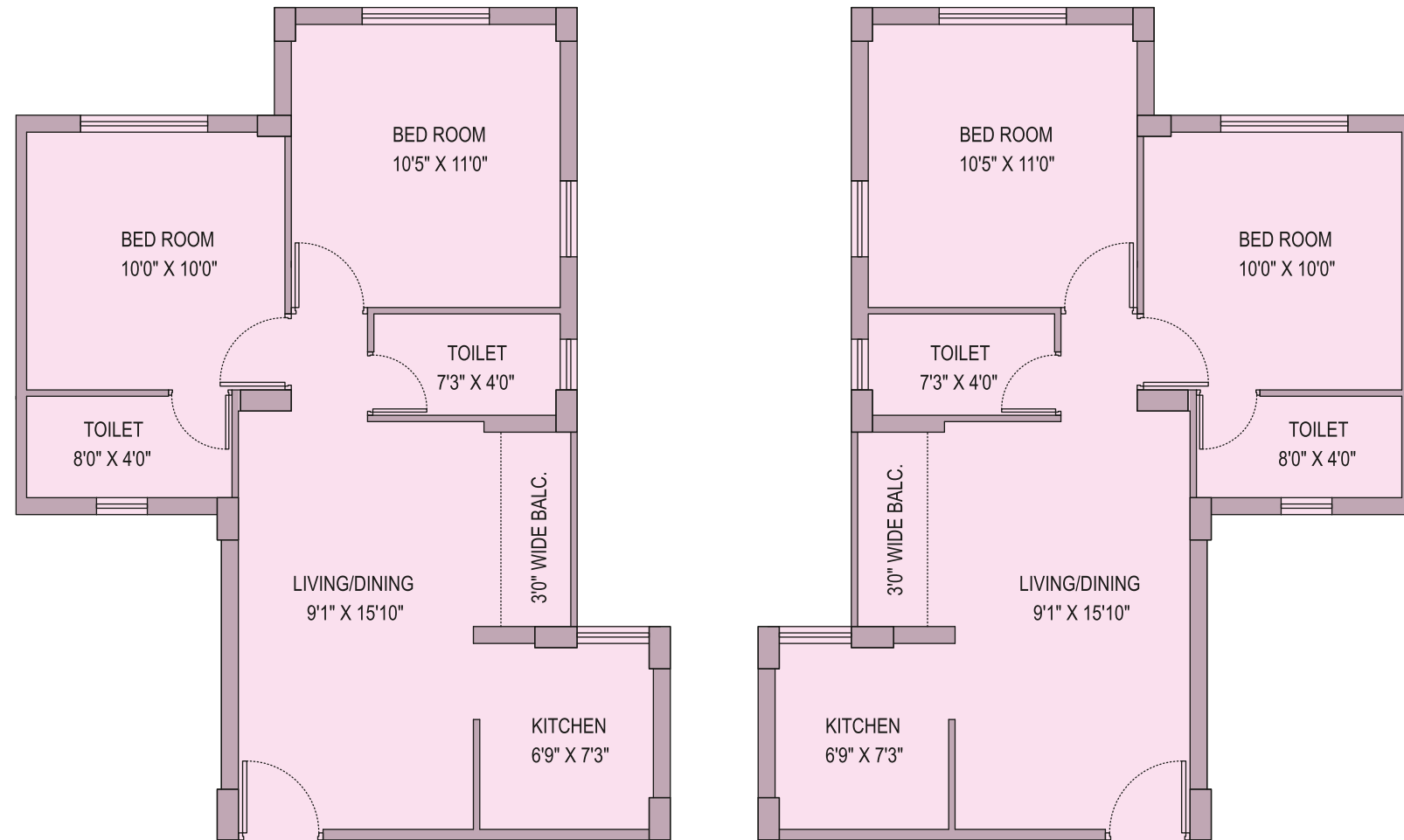
BLOCKS: 6, 7, 17 & 19

FLATS A, D, E, H				
(AREA IN SQ.FT.)				
FLOOR	BUILTUP AREA	CARPET AREA	BALCONY AREA	TERRACE AREA
1ST	580.2	507.3	19.4	50.6
2ND TO 7TH	580.2	507.3	19.4	-

FLOOR PLAN – 2 BHK



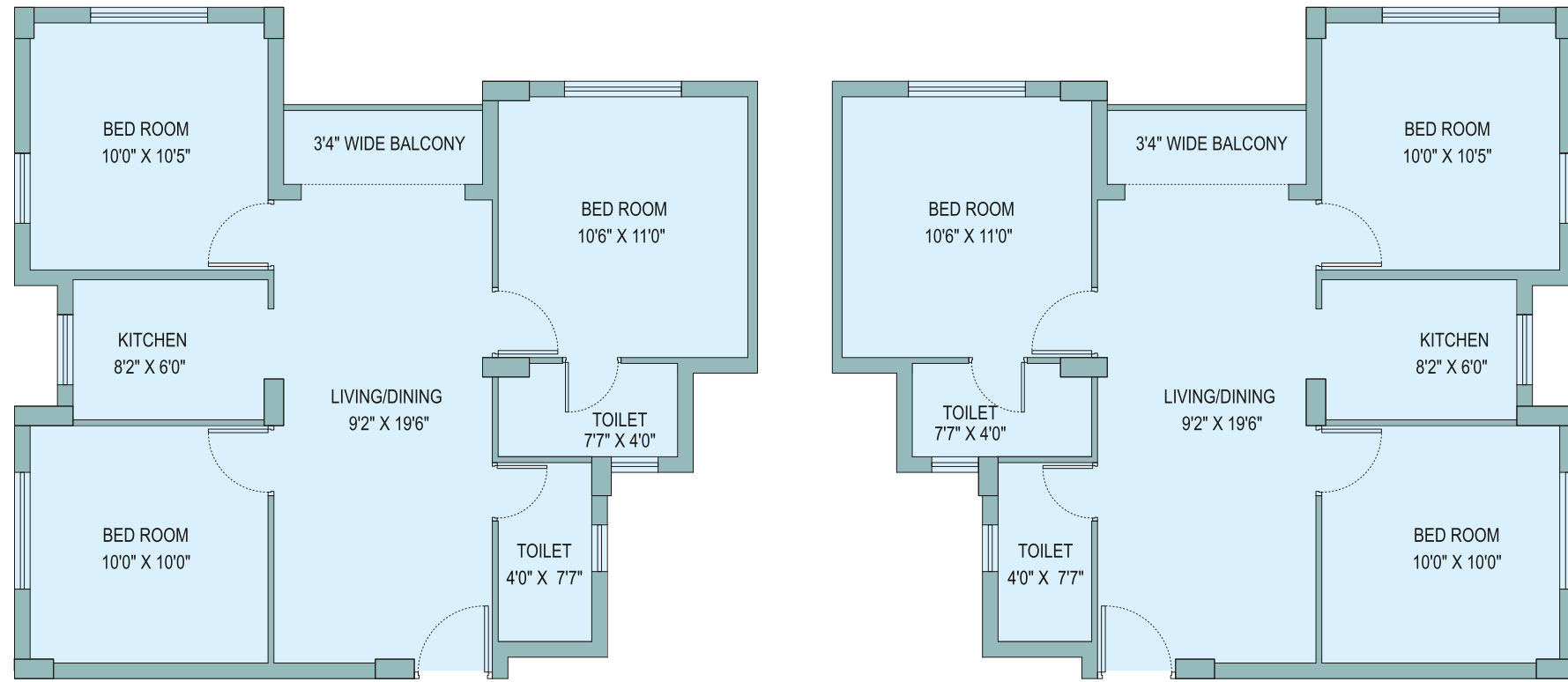
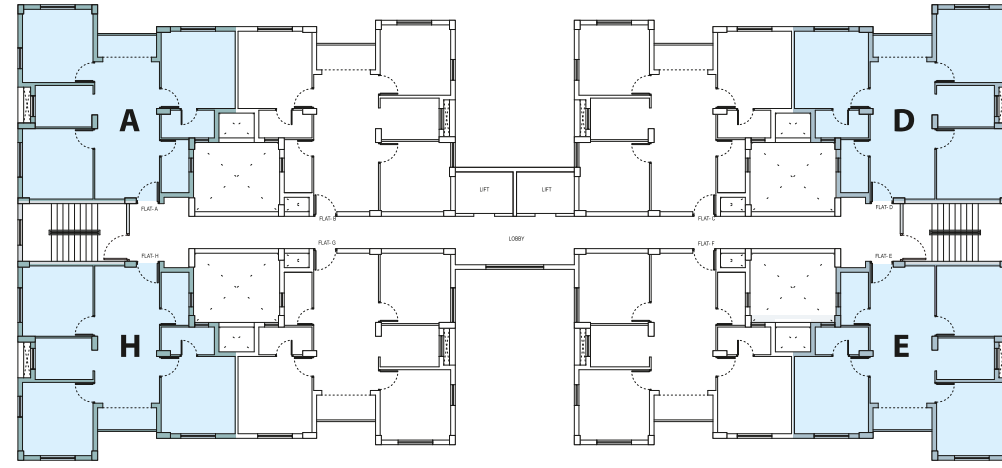
ISOMETRIC PLAN – 2 BHK



BLOCKS: 6, 7, 17 & 19

FLATS B, C, F, G				
[AREA IN SQ.FT.]				
FLOOR	BUILTUP AREA	CARPET AREA	BALCONY AREA	TERRACE AREA
1ST	587.3	506.7	20.4	50.9
2ND TO 7TH	587.3	506.7	20.4	-

FLOOR PLAN – 3 BHK



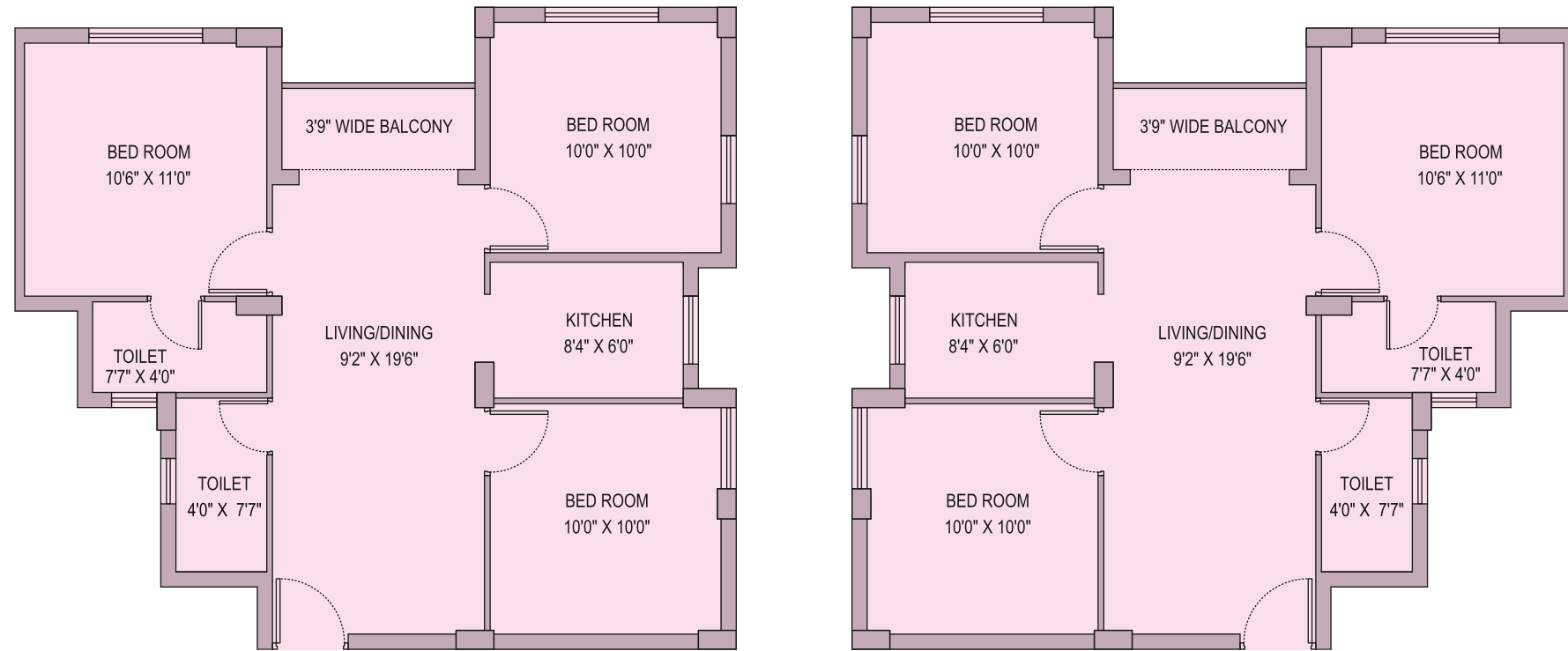
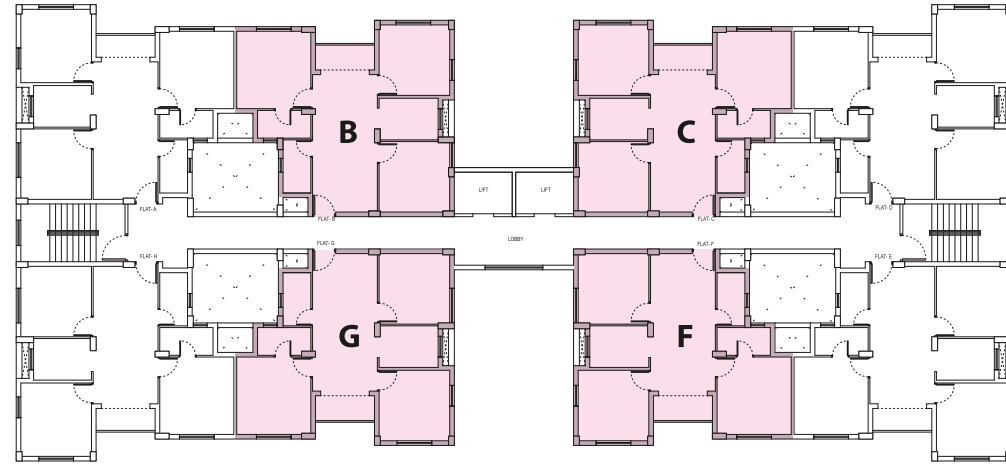
ISOMETRIC PLAN – 3 BHK



BLOCKS: 1, 2, 3, 4, 5 & 18

FLATS A, D, E, H				
[AREA IN SQ.FT.]				
FLOOR	BUILTUP AREA	CARPET AREA	BALCONY AREA	TERRACE AREA
1ST	736.6	636.3	26.1	16.0
2ND TO 7TH	736.6	636.3	26.1	-

FLOOR PLAN - 3 BHK



ISOMETRIC PLAN - 3 BHK



BLOCKS: 1, 2, 3, 4, 5 & 18

FLATS B, C, F, G		[AREA IN SQ.FT.]		
FLOOR	BUILTUP AREA	CARPET AREA	BALCONY AREA	TERRACE AREA
1ST	737.9	632.8	29.5	27.7
2ND TO 7TH	737.9	632.8	29.5	-



APARTMENT & BLOCK FEATURES

A REALM TO EXPERIENCE

AREA DEFINITIONS

CARPET AREA means the net usable floor area of an apartment, excluding the area covered by the external walls, areas under service shafts, exclusive balcony or verandah area and exclusive open terrace area, but includes the area covered by the internal partition walls of the apartment.

BALCONY AREA means the area of the balcony or verandah, as the case may be, which is appurtenant to the net usable floor area of an apartment, meant for exclusive use of an allottee.

BUILT-UP AREA means the total carpet area, balcony area and the applicable area of the external and internal walls.

OPEN TERRACE AREA means the area of open terrace which is appurtenant to the net usable floor area of an apartment, meant for exclusive use of an allottee.

SPECIFICATIONS

ROOMS

- Vitrified Floor Tiles
- POP Finished Wall & Ceiling

KITCHEN

- Wall Tiles up to Two Feet above Counter Level
- Anti-skid Floor Tiles
- Black Stone/Granite Countertop
- Stainless Steel Sink & Provision for Exhaust Fan
- Reputed Brand CP Fittings
- POP Finished Wall & Ceiling

TOILETS

- Designer Tiles up to Door Height
- Anti-skid Floor Tiles
- Premium Quality CP Fittings
- Reputed Brand Sanitaryware

DOOR AND WINDOWS

- Flush Doors & PVC Doors For Toilets
- Anodized Aluminium Sliding Windows

ELECTRICAL

- Reputed Brand Modular Switches
- AC Point in Master Bedroom
- TV, Telephone Points in Living Room
- Power Back-up*

SAFETY AND SECURITY

- Intercom System
- CCTV Surveillance System for Common Areas
- Modern Fire Fighting & Alarm System as per Government Norms

SPORTS CITY AT A GLANCE

Project Hallmarks

- Gated Community Living with World-class Sports Facilities
- First-of-its-kind Sports Themed Residential Community Lifestyle Experience
- Offering Uniquely Designed Lifestyle Homes with International Standard Fitments & Fixtures
- Dedicated Space for Exclusive Sports Facilities, Family Entertainment & Leisure Activities
- Well connected to all parts of Kolkata & West Bengal
- Close to Airport, Sector-V, New Town

Sports Arena

- Mini Football Ground & Cricket Field
- International Standard Net Cricket Pitch
- Dedicated Area for Skating & Skate Boarding
- Flood Lit Multipurpose Court for Basketball & Volleyball
- Badminton Court
- Lawn Bowling
- Golf Putting Area
- Martial Arts Zone

Entertainment Hub

- Indoor Games Room with Table Tennis, Pool, Carrom, Chess, Cards, Darts, Board Games & Virtual Gaming Zone
- Community Hall with Kitchen Facility
- Home Theatre with Digital Sound
- Toddler's Play Room & Crèche
- Rooftop Barbeque in Clubhouse
- Hobby & Activity Training Centre
- Business Centre with Conference Facility
- Air-conditioned Gymnasium with Modern Equipments
- Exclusive Retail Shopping Experience spread over multiple Floors

Health & Wellness Centre

- Garden Pavilion with Designer Flowerbeds
- Children's Play Area
- Rooftop Infinity Edge Swimming Pool in Clubhouse
- Spa with Therapeutic Massage Room
- Jogging Track with Grass Pavers
- Yoga & Meditation Lawn
- Cycling Track
- Outdoor Fitness Area & Reflexology Pathway

Apartment Embellishments

- Elegant Living Room with Virtrified Tile Flooring
- Spacious Bedrooms
- Modern Kitchen with Black Stone/ Granite Platform & Branded Stainless Steel Sink
- Branded Sanitary-ware

Block Features

- Elegant Lobby in Each Block
- 24x7 CCTV Surveillance, Intercom in all Apartments & Manned Security
- Fire Safety, Power-backup
- Branded Lift in Each Block
- Ample Parking Spaces



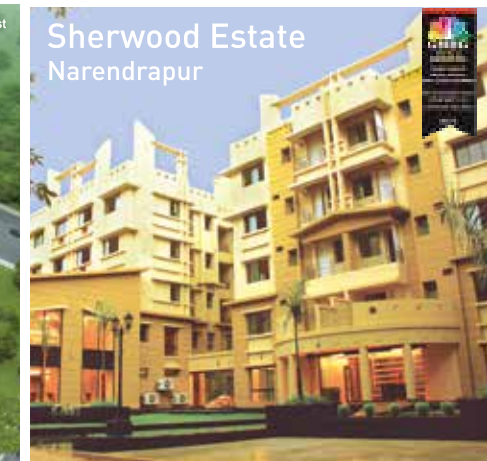


DEVELOPING LIFESTYLES OF A LIFETIME

Unimark Group believes “If you can think it, you can achieve it”.

Being India’s Leading Real Estate Developer, we have successfully delivered Magnificent Landmarks across 5 million sq.ft. and more to come on 10 million sq. ft. of area. Our Innovation, Creativity and Superlative Design has earned us thousands of happy customers.

Apart from Lifestyle Residential Projects, our portfolio comprises of World-class IT Parks, New Age Integrated Townships, and State-of-the-art Business Centers. We represent the new era of lifestyle evolution and foresight to create more landmarks of luxury in the future.





UNIMARK
SPORTSCITY
SPORTS THEMED LIVING

Project by



Call: 033 3099 2200

Email: sportscity@unimarkgroup.com

Site Address: 49/39, Jessore Road East, Kolkata - 700 124

Office Address: 207, AJC Bose Rd, Kolkata - 700 017

Website: www.unimarkgroup.com

HIRA No: Phase I- HIRA/P/NOR/2019/000360

Disclaimer : This is not an offer, or invitation for offer. Furniture and fixtures shown are not part of the offer. The brochure is purely conceptual. Information included in the brochure, including elevation details, specifications, dimensions, designs, layouts and rendered images are strictly provided for representative and illustrative purposes, and are subject to modification.