



Artist's Impression

*DORIS AND RISSOINA*  
*30 & 25 STOREYS - 2 & 3 BHK RESIDENCES*



**RUNWAL**  
**PEARL**

PURITY, PANACHE, PEACE  
Ghodbunder Rd., Thane(W)

## RUNWAL PEARL

Open up to an effervescent life at Runwal Pearl. It presents a refreshing mix of luxury and rejuvenating nature. Situated in a serene locale, these luxurious 2 and 3 BHK residences are thoughtfully designed to offer you a convenient living.

## PURITY, PANACHE, PEACE

Step in to Runwal Pearl. It's a tranquil place that's sure to revive your spirits. It's where you can invigorate yourself. It's a quintessence of purity, panache and peace by all means. It's where your desires are fulfilled and life acquires a dreamlike radiance.

Situated amidst the serene ambiance, your refined residence is ideally located behind R Mall on Ghodbunder Road.

Get enchanted by the spectacular view of Yeoor Hills on one side and Thane Creek on the other. Watch sheer peace pervade every moment of your life!

## LIFESTYLE AMENITIES



Swimming Pool  
with Kid's pool



Meditation Pavilion



Party Lawn



Gymnasium



Badminton Court /  
Multipurpose Hall



Pergola



Acupressure Zone



Jogging Track



Card Room



Kids play area with rubberized flooring

## DORIS AND RISSOINA

30 & 25 STOREYS - 2 & 3 BHK RESIDENCES

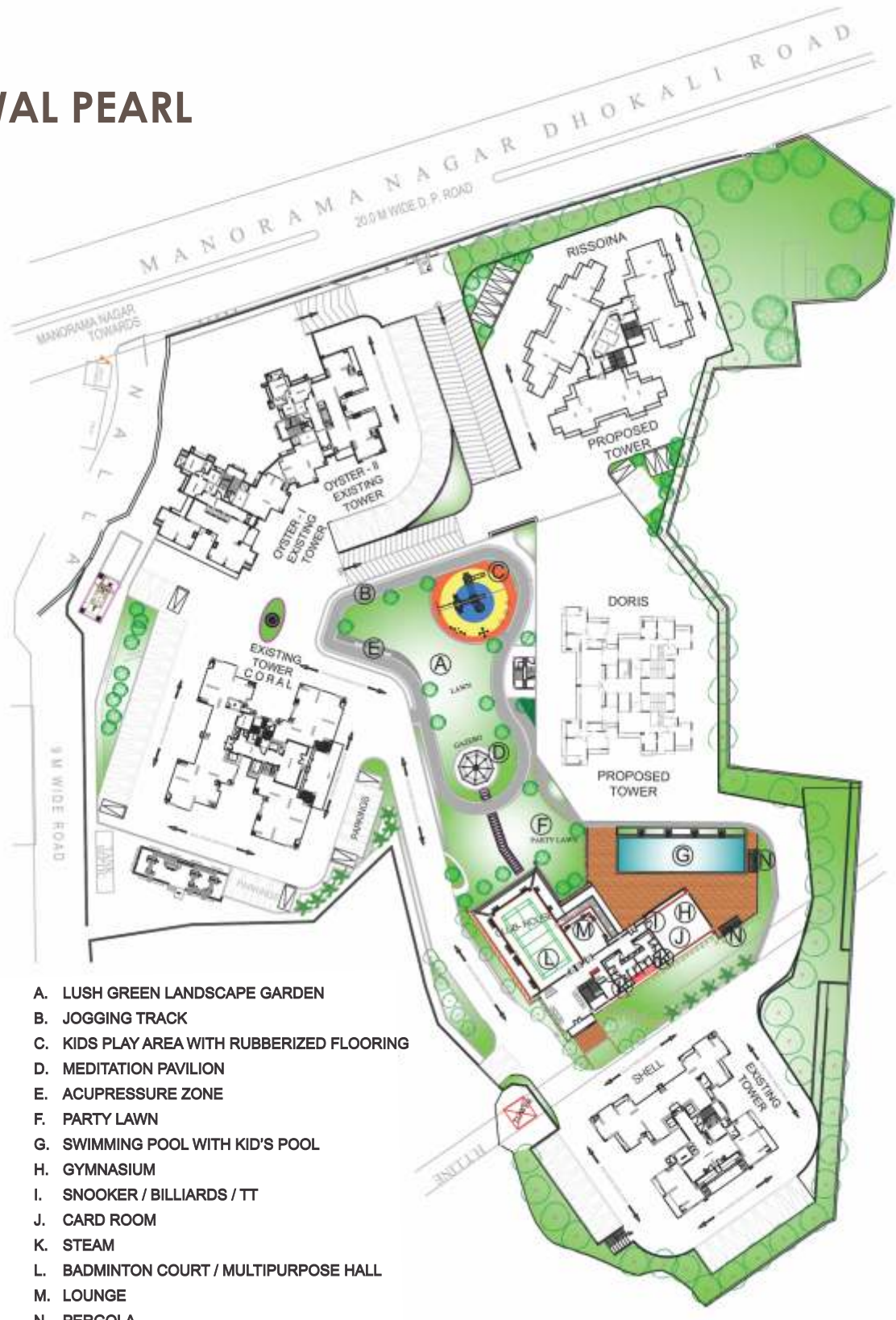


**RUNWAL**  
PEARL

PURITY, PANACHE, PEACE

Ghodbunder Rd., Thane(W)

# RUNWAL PEARL

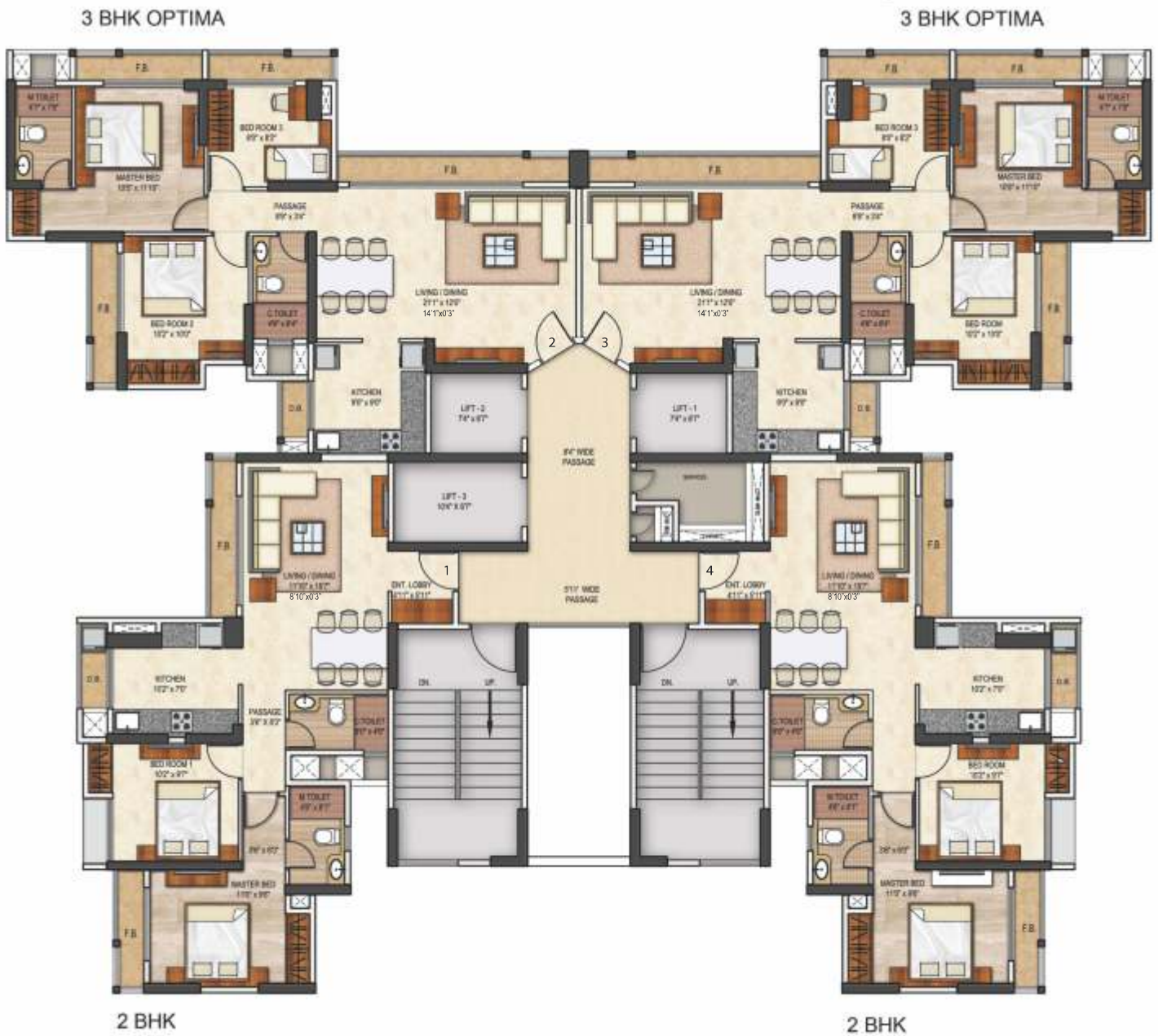


- A. LUSH GREEN LANDSCAPE GARDEN
- B. JOGGING TRACK
- C. KIDS PLAY AREA WITH RUBBERIZED FLOORING
- D. MEDITATION PAVILION
- E. ACUPRESSURE ZONE
- F. PARTY LAWN
- G. SWIMMING POOL WITH KID'S POOL
- H. GYMNASIUM
- I. SNOOKER / BILLIARDS / TT
- J. CARD ROOM
- K. STEAM
- L. BADMINTON COURT / MULTIPURPOSE HALL
- M. LOUNGE
- N. PERGOLA

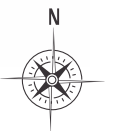
## LAYOUT PLAN

Disclaimer : The images and other details herein are only indicative. The Developer / Owner reserves the right to change any or all of these in the interest of the development, as per provision of law. Artist's impressions are used to illustrate amenities, specifications, images and other details. Tolerance of +/- 3% is possible in the unit areas on account of design and construction variances. All brands stated are subject to final decision of the project architect. This electronic / printed material does not constitute an offer and/or contract of any type between the Developer / Owner and the recipient. No booking or allotment shall be deemed to have been made on the basis of this electronic / printed material. Any Purchaser / Lessee of this development shall be governed by the terms and conditions of the agreement for sale / lease entered into between the parties, and no details mentioned in this electronic / printed material shall in any way govern such transactions unless as may be otherwise expressly provided in the agreement for sale/lease by the Developer / Owner. The Developer / Owner does not warrant or assume any liability or responsibility for the accuracy or completeness of any information contained herein. Project presently financed by HDFC Limited and NOC / permission of HDFC Limited will be obtained for sale of property, if required. This electronic / printed material has been created keeping in mind the provisions of the Real Estate (Regulation and Development) Act, 2016 (RERA) applicable for projects in Maharashtra. You are required to verify all the details, including area, amenities, services, terms of sales and payments and other relevant terms independently with the Developer sales team only, by physically visiting the project site and the authorised website of RERA. You are requested NOT to visit any unauthorized or unverified website/broker (online / offline) to receive any information about any projects of the Developer and/or its sister concerns."

# DORIS - TOWER A



TYPICAL FLOOR PLAN  
( 1st to 7th,9th to 12th,  
14th to 17th & 19th FLOORS )



Disclaimer : The images and other details herein are only indicative. The Developer / Owner reserves the right to change any or all of these in the interest of the development, as per provision of law. Artist's impressions are used to illustrate amenities, specifications, images and other details. Tolerance of +/- 3% is possible in the unit areas on account of design and construction variances. All brands stated are subject to final decision of the project architect. This electronic / printed material does not constitute an offer and/or contract of any type between the Developer / Owner and the recipient. No booking or allotment shall be deemed to have been made on the basis of this electronic / printed material. Any Purchaser / Lessee of this development shall be governed by the terms and conditions of the agreement for sale / lease entered into between the parties, and no details mentioned in this electronic / printed material shall in any way govern such transactions unless as may be otherwise expressly provided in the agreement for sale/lease by the Developer / Owner. The Developer / Owner does not warrant or assume any liability or responsibility for the accuracy or completeness of any information contained herein. Project presently financed by HDFC Limited and NOC / permission of HDFC Limited will be obtained for sale of property, if required. This electronic / printed material has been created keeping in mind the provisions of the Real Estate (Regulation and Development) Act, 2016 (RERA) applicable for projects in Maharashtra. You are required to verify all the details, including area, amenities, services, terms of sales and payments and other relevant terms independently with the Developer sales team only, by physically visiting the project site and the authorised website of RERA. You are requested NOT to visit any unauthorized or unverified website/broker (online / offline) to receive any information about any projects of the Developer and/or its sister concerns."

# DORIS - TOWER A

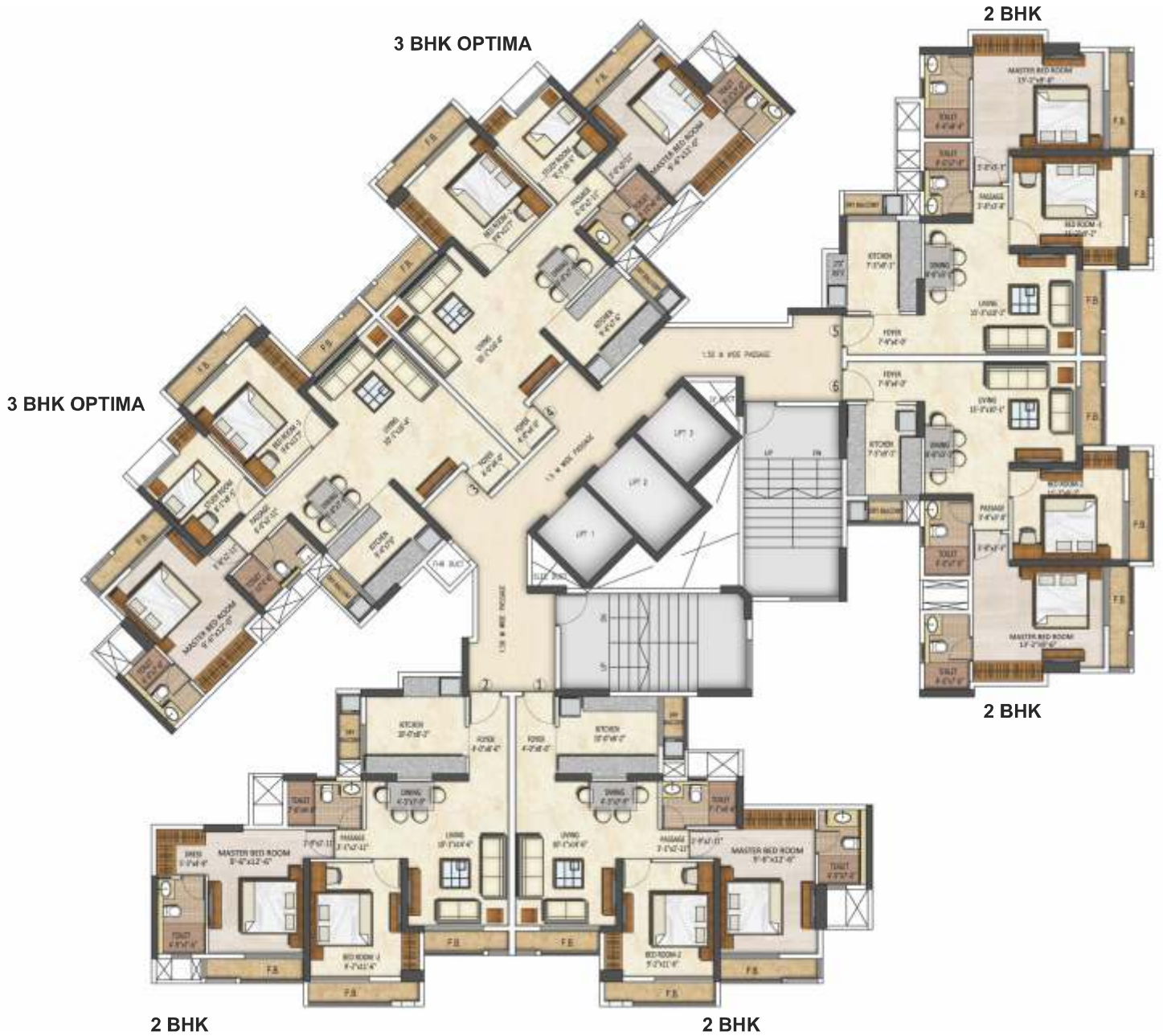


TYPICAL FLOOR PLAN  
( 20 to 22 , 24 to 27 & 29 to 30 FLOORS)



Disclaimer : The images and other details herein are only indicative. The Developer / Owner reserves the right to change any or all of these in the interest of the development, as per provision of law. Artist's impressions are used to illustrate amenities, specifications, images and other details. Tolerance of +/- 3% is possible in the unit areas on account of design and construction variances. All brands stated are subject to final decision of the project architect. This electronic / printed material does not constitute an offer and/or contract of any type between the Developer / Owner and the recipient. No booking or allotment shall be deemed to have been made on the basis of this electronic / printed material. Any Purchaser / Lessee of this development shall be governed by the terms and conditions of the agreement for sale / lease entered into between the parties, and no details mentioned in this electronic / printed material shall in any way govern such transactions unless as may be otherwise expressly provided in the agreement for sale/lease by the Developer / Owner. The Developer / Owner does not warrant or assume any liability or responsibility for the accuracy or completeness of any information contained herein. Project presently financed by HDFC Limited and NOC / permission of HDFC Limited will be obtained for sale of property, if required. This electronic / printed material has been created keeping in mind the provisions of the Real Estate (Regulation and Development) Act, 2016 (RERA) applicable for projects in Maharashtra. You are required to verify all the details, including area, amenities, services, terms of sales and payments and other relevant terms independently with the Developer sales team only, by physically visiting the project site and the authorised website of RERA. You are requested NOT to visit any unauthorized or unverified website/broker (online / offline) to receive any information about any projects of the Developer and/or its sister concerns."

# RISSOINA - TOWER E

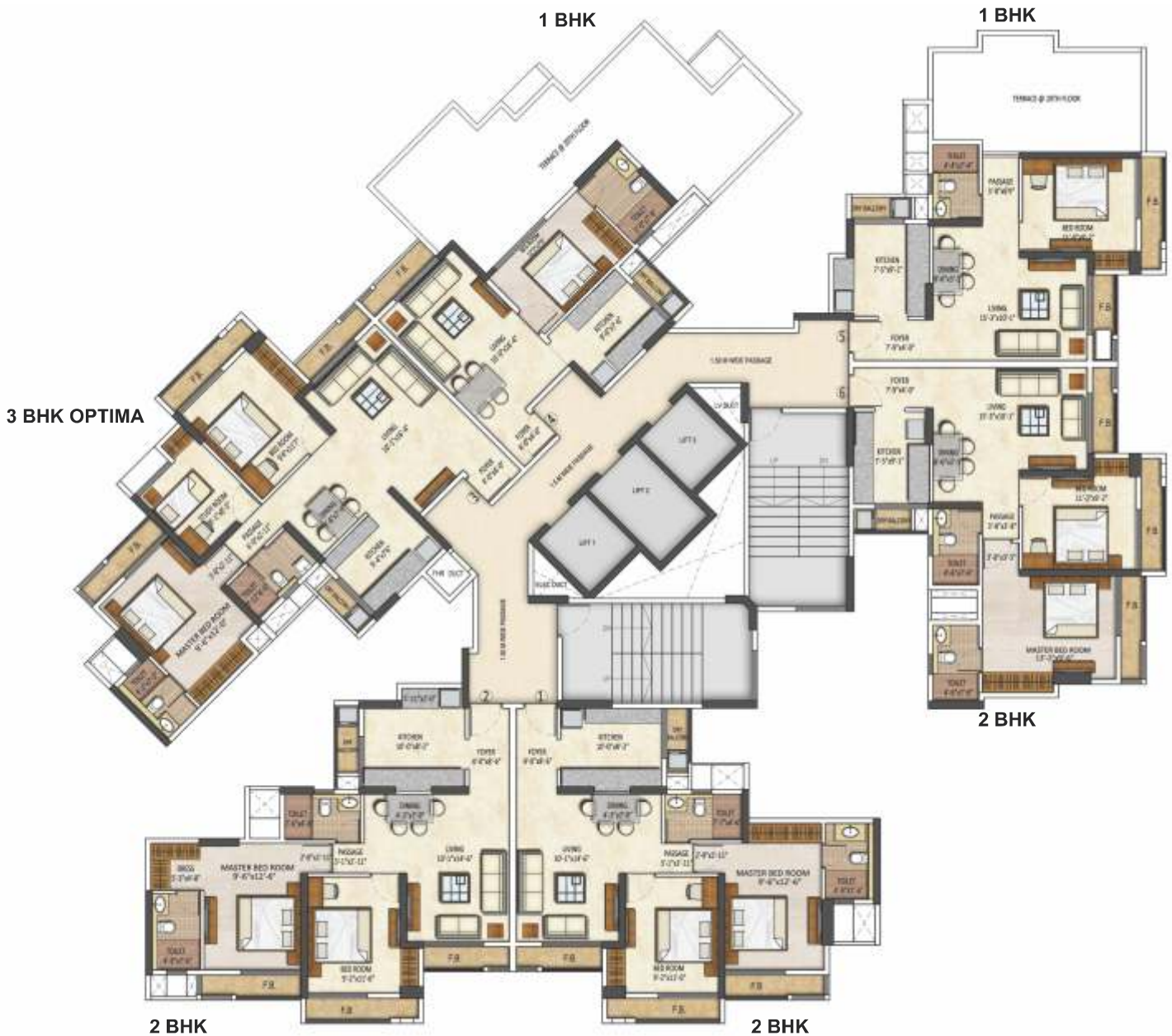


**TYPICAL FLOOR PLAN**  
 ( 1st to 7th, 9th to 12th,  
 14th to 17th & 19th FLOORS )



Disclaimer : The images and other details herein are only indicative. The Developer / Owner reserves the right to change any or all of these in the interest of the development, as per provision of law. Artist's impressions are used to illustrate amenities, specifications, images and other details. Tolerance of +/- 3% is possible in the unit areas on account of design and construction variances. All brands stated are subject to final decision of the project architect. This electronic / printed material does not constitute an offer and/or contract of any type between the Developer / Owner and the recipient. No booking or allotment shall be deemed to have been made on the basis of this electronic / printed material. Any Purchaser / Lessee of this development shall be governed by the terms and conditions of the agreement for sale / lease entered into between the parties, and no details mentioned in this electronic / printed material shall in any way govern such transactions unless as may be otherwise expressly provided in the agreement for sale/lease by the Developer / Owner. The Developer / Owner does not warrant or assume any liability or responsibility for the accuracy or completeness of any information contained herein. Project presently financed by HDFC Limited and NOC / permission of HDFC Limited will be obtained for sale of property, if required. This electronic / printed material has been created keeping in mind the provisions of the Real Estate (Regulation and Development) Act, 2016 (RERA) applicable for projects in Maharashtra. You are required to verify all the details, including area, amenities, services, terms of sales and payments and other relevant terms independently with the Developer sales team only, by physically visiting the project site and the authorised website of RERA. You are requested NOT to visit any unauthorized or unverified website/broker (online / offline) to receive any information about any projects of the Developer and/or its sister concerns."

# RISSOINA - TOWER E



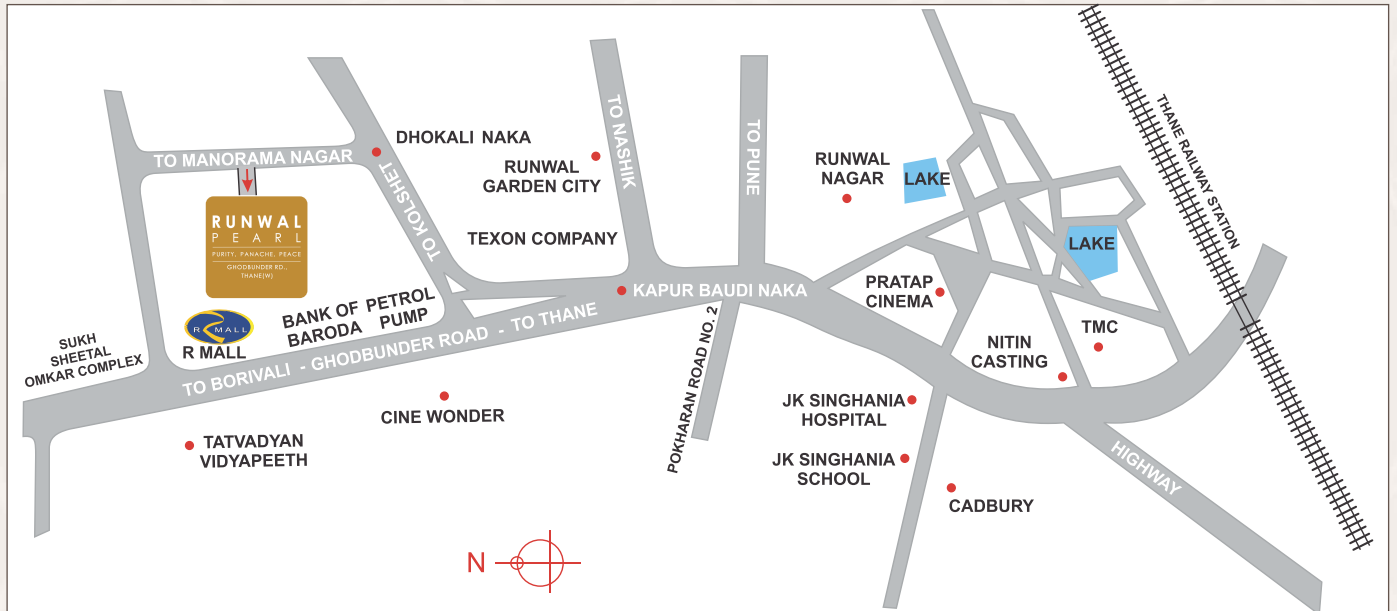
**TYPICAL FLOOR PLAN**  
( 21st, 22nd, 24th & 25th FLOORS )



Disclaimer : The images and other details herein are only indicative. The Developer / Owner reserves the right to change any or all of these in the interest of the development, as per provision of law. Artist's impressions are used to illustrate amenities, specifications, images and other details. Tolerance of +/- 3% is possible in the unit areas on account of design and construction variances. All brands stated are subject to final decision of the project architect. This electronic / printed material does not constitute an offer and/or contract of any type between the Developer / Owner and the recipient. No booking or allotment shall be deemed to have been made on the basis of this electronic / printed material. Any Purchaser / Lessee of this development shall be governed by the terms and conditions of the agreement for sale / lease entered into between the parties, and no details mentioned in this electronic / printed material shall in any way govern such transactions unless as may be otherwise expressly provided in the agreement for sale/lease by the Developer / Owner. The Developer / Owner does not warrant or assume any liability or responsibility for the accuracy or completeness of any information contained herein. Project presently financed by HDFC Limited and NOC / permission of HDFC Limited will be obtained for sale of property, if required. This electronic / printed material has been created keeping in mind the provisions of the Real Estate (Regulation and Development) Act, 2016 (RERA) applicable for projects in Maharashtra. You are required to verify all the details, including area, amenities, services, terms of sales and payments and other relevant terms independently with the Developer sales team only, by physically visiting the project site and the authorised website of RERA. You are requested NOT to visit any unauthorized or unverified website/broker (online / offline) to receive any information about any projects of the Developer and/or its sister concerns."

## LOCATION HIGHLIGHTS

- Conveniently located behind R Mall, Thane
- Few mins. drive from Thane Station
- Close to Eastern Express Highway
- Close to Schools, Colleges, Hospitals, Banks, ATMs, Restaurants and Multiplexes.



Disclaimer : The images and other details herein are only indicative. The Developer / Owner reserves the right to change any or all of these in the interest of the development, as per provision of law. Artist's impressions are used to illustrate amenities, specifications, images and other details. Tolerance of +/- 3% is possible in the unit areas on account of design and construction variances. All brands stated are subject to final decision of the project architect. This electronic / printed material does not constitute an offer and/or contract of any type between the Developer / Owner and the recipient. No booking or allotment shall be deemed to have been made on the basis of this electronic / printed material. Any Purchaser / Lessee of this development shall be governed by the terms and conditions of the agreement for sale / lease entered into between the parties, and no details mentioned in this electronic / printed material shall in any way govern such transactions unless as may be otherwise expressly provided in the agreement for sale/lease by the Developer / Owner. The Developer / Owner does not warrant or assume any liability or responsibility for the accuracy or completeness of any information contained herein. Project presently financed by HDFC Limited and NOC / permission of HDFC Limited will be obtained for sale of property, if required. This electronic / printed material has been created keeping in mind the provisions of the Real Estate (Regulation and Development) Act, 2016 (RERA) applicable for projects in Maharashtra. You are required to verify all the details, including area, amenities, services, terms of sales and payments and other relevant terms independently with the Developer sales team only, by physically visiting the project site and the authorised website of RERA. You are requested NOT to visit any unauthorized or unverified website/broker (online / offline) to receive any information about any projects of the Developer and/or its sister concerns."

MahaRERA Registration No. Tower A & E : P51700001383 available at website:<http://maharera.mahaonline.gov.in>



### SITE ADDRESS:

Runwal Pearl, Behind R Mall Thane, Ghodbunder Road, Thane (W).

**For details, call:** 022 62810340 | **Email:** [pearl@runwal.com](mailto:pearl@runwal.com) | **Visit:** [www.runwal.com/pearl](http://www.runwal.com/pearl)

### CORPORATE OFFICE:

Runwal & Omarkar E Square, 5<sup>th</sup> Floor, Near Sion Chunabhatti Signal, Off Eastern Express Highway, Sion, Mumbai. Tel.: 022 61133000 | Visit: [www.runwal.com](http://www.runwal.com)