

A PROJECT BY ABHINAV
RAINBOW DEVELOPERS &
PROMOTERS LLP.
Site Address :
Sr. No. 270/1/A/3,
Next to DSK Toyota Showroom,
Bavdhan, Pune - 411 021.

DESIGNED, MANAGED & MARKETED BY
PARANJAPE PREMISES PVT. LTD.
Corporate Office: 'PSC House',
Dr. Ketkar Road, Off Prabhat Road,
Erandawane, Pune - 411004



www.pscl.in

Disclaimer: The plans, specifications, images and other details here in are only indicative and the developer/owner reserve the right to change any or all. The printed material does not constitute a contract / offer of any type between the developer/owner and the recipient. Any purchase /lessee of this development shall be governed by the terms and conditions of the agreement for sale/lease entered into between parties and no details mentioned in this printed material shall in any way govern such transaction. | Pictorial representation is used to simply convey the essence of suggested lifestyle. | Athashri Pebbles is developed by Abhinav Rainbow Developers & Promoters LLP. The Paranjape logo is used as a part of license agreement.



Maharera.mahaonline.gov.in
Maharera no. P52100019099
Maharera no. A51900017310

www.pratisaad.com 19/01/27254

PARANJAPE



SUPERLATIVE SENIOR LIVING

at



pebbles II



Disclaimer: The plans, specifications, images and other details here in are only indicative and the developer/owner reserve the right to change any or all. The printed material does not constitute a contract / offer of any type between the developer/owner and the recipient. Any purchase /lessee of this development shall be governed by the terms and conditions of the agreement for sale/lease entered into between parties and no details mentioned in this printed material shall in any way govern such transaction. | Pictorial representation is used to simply convey the essence of suggested lifestyle. | Athashri Pebbles is developed by Abhinav Rainbow Developers & Promoters LLP. The Paranjape logo is used as a part of license agreement.

WELCOME TO ATHASHRI AT PEBBLES II

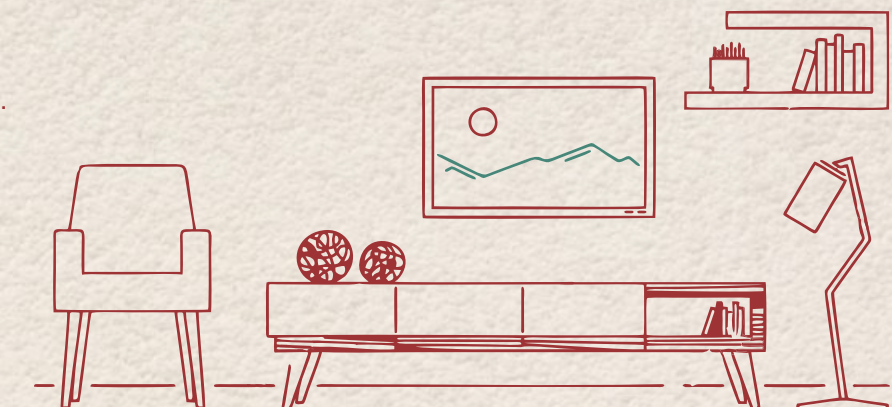
MINDFUL & INSPIRED

Athashri is a Sanskrit word that means “auspicious new beginnings” and aptly names this completely new, superlative senior living community.

Athashri at Pebbles II, Bavdhan is where your senior life comes home. Here, thoughtful planning has created a beautiful environment to live an inspired life. From mindful moments to delicious meals, there's never been a more pleasant community.

Athashri is presented by the Paranjape Group, a well-respected developer of superlative senior living communities. With care, Paranjape creates environments to encourage experiences—making space and time for things you might have missed while fulfilling your life's responsibilities.

We invite you to explore.





SITUATED IN BAVDHAN, THE CONNECTIVITY ADVANTAGE LOCATION

Be it the city life of Pune, close connectivity to Mumbai or Bengaluru highway from Athashri at Pebbles II or even a nature getaway to the naturally beautiful Tamhini Ghat – Athashri at Pebbles II has it all. Invite friends and family from all over or roam all around Pune. Bawdhan will give just the right balance of serenity and liveliness that you seek.

IMPORTANT LOCATIONS

Kothrud Bus Depot	3km
Aditya Shagun Mall	3km
Chellaram Diabetes Hospital	less than 1km
Sahyadri Hospital	5km



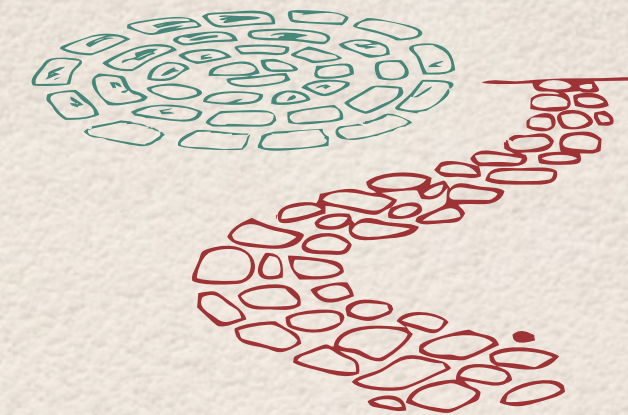


A WORLD OF ITS OWN

**ATHASHRI AT PEBBLES II, A WORLD OF ITS OWN,
IN THE HEART OF BAVDHAN.**

In your new home, you'll have easy access to a variety of cultural centers, in addition to nearby malls, movie theatres, restaurants, Chellaram hospital across the road and 20 convenience stores below for easy daily shopping.

Being in Bavdhan ensures that you explore the city whenever you please without a long drive or commute.





Disclaimer: All images are pictorial representation is used to simply convey the essence of suggested lifestyle.

DWELL IN WELLNESS

WHERE YOU LIVE, AFFECTS HOW YOU LIVE.

Athashri as a community was consciously designed to make it easy to create healthy habits. The community provides the right settings and amenities for fitness and is designed for social connection. Yoga classes and swimming are all a lot more fun with your friends! Informally and organically, Athashri residents create new patterns and habits that encourage healthy minds, bodies and spirits.





FITNESS CENTER & STUDIO

The fitness center features a variety of equipment for both cardio and weight training. The indoor multipurpose room and outdoor fitness area are used as studios for group classes and meditation.

WALK IN BEAUTY

For those who want to get a brisk walk without leaving the community, our pleasant path passes through lovely landscaped courtyards and well-maintained grounds.

OUTDOOR POOL

Take a swim in the morning, sunbathe in the warm afternoon light and enjoy a soothing soak at the indoor spa in the early evening. From poolside lunches and drinks with friends to quiet moments, you'll find cool and calm always within reach.



Disclaimer: All images are pictorial representation is used to simply convey the essence of suggested lifestyle.





A DELICIOUS LIFE

A TASTE OF HOME - WITHOUT COOKING IT YOURSELF!

Home is where delicious meals are! At Athashri at Pebbles II, you can cook at home, join your friends in our spacious dining room for dinners or even have food delivered from the kitchen to your doorstep! A perfect blend of good health and taste, crafted in a carefully designed kitchen with separate preparation areas. Make a choice that best meets your lifestyle— from one meal a day to every meal throughout the day.





THE ART OF LIVING WELL

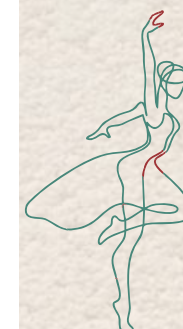
Rabindranath Tagore learnt a whole new art of painting in his sixties... who knows what might inspire you next?

Athashri at Pebbles II is a great place to put your lifetime of learning and experience to the test. Your new community is fertile ground for creative pursuits. It was designed to be in sync with changing lifestyle dynamics - 60 is the new 40!

THE ARTS, ALWAYS AT THE CENTER

The arts are in the fabric of Athashri's culture. Our multipurpose room hosts visiting local musicians and artists from around the world, as well as guest lecturers, teachers and staged collaborations with residents. Your talents have their own stage at the annual inter- Athashri event, AnandGhan.

Unleash your potential or simply sit back and appreciate. It's up to you!



Disclaimer: All images are pictorial representation is used to simply convey the essence of suggested lifestyle.



Disclaimer: All images are pictorial representation is used to simply convey the essence of suggested lifestyle.

STAYING CONNECTED AND LIVING A MINDFUL LIFE

Bring your own flavor of mindfulness, and take advantage of the classes, peers and schedules. Greet the sun with salutations, sit with friends in meditation or simply live in the moment, enjoying kindred spirits. Such moments are aplenty at Athashri.

THE SPIRIT OF GIVING BACK

Whether your interest is volunteering, or working for others, you'll find it easy to collaborate with others at Athashri. Athashri Foundation, the non-profit organisation working with a motto of providing dignified life to senior citizens, helps you work for this noble cause.



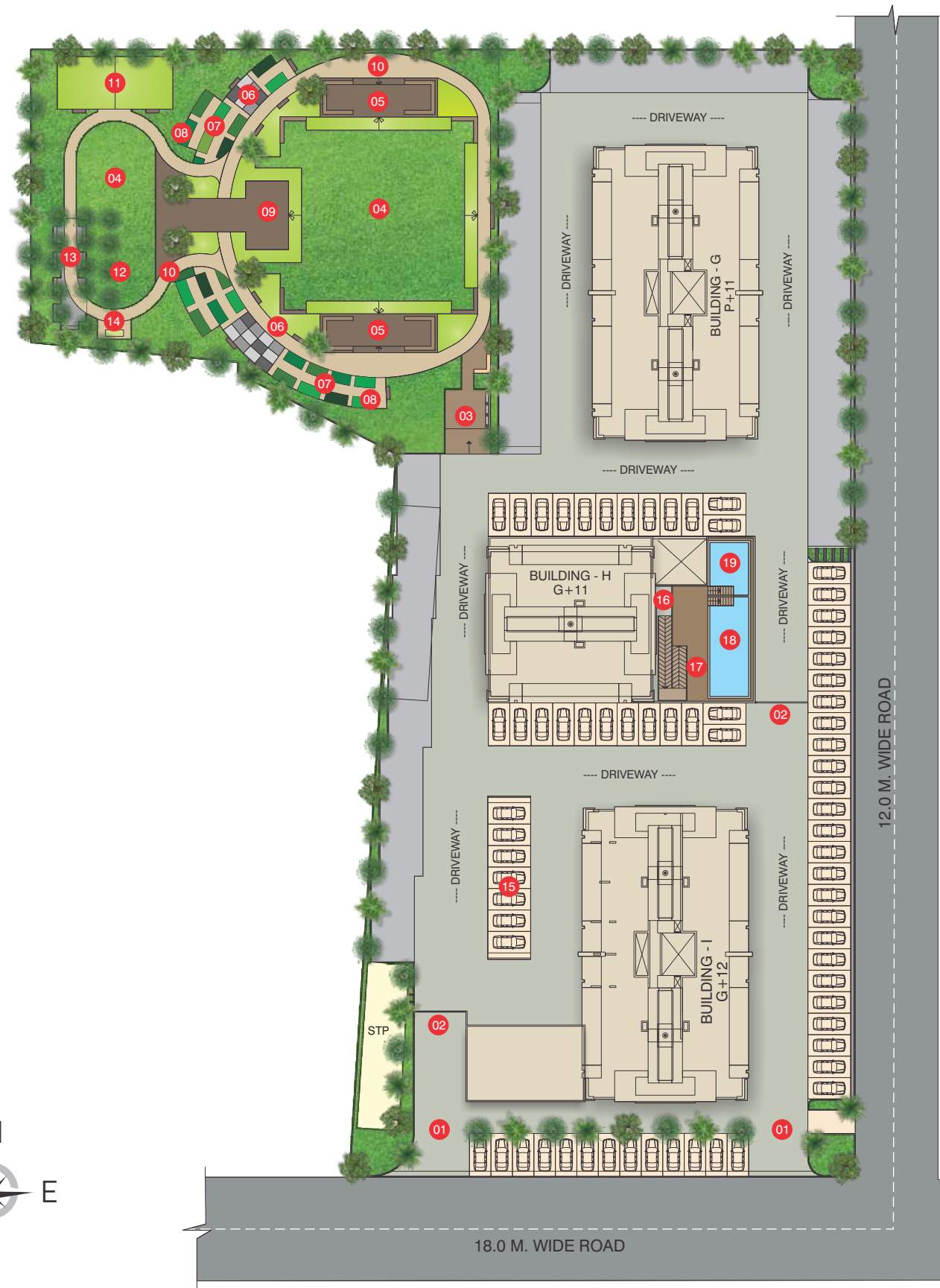
Layout Plan

OPEN SPACE

- 01. ENTRANCE
- 02. RESIDENTIAL ENTRY
- 03. ENTRANCE
- 04. LAWN
- 05. SITTING COURTS
- 06. OUTDOOR EXERCISE STATIONS
- 07. PATHWAY
- 08. COMMUNITY FARM
- 09. STAGE AREA
- 10. WALKING TRACK
- 11. PICKLE BALL COURT
- 12. FRUIT ORCHARD
- 13. ACCUPRESSURE COURT
- 14. BARBEQUE STATION
- 15. PARKING BY SHED

PODIUM LEVEL

- 16. ENTRANCE COURT
- 17. DECK AREA
- 18. SWIMMING POOL
- 19. JACUZZI



DESIGNED FOR THE WHOLE OF LIFE

ATHASHRI STRIKES AN IDEAL BALANCE BETWEEN CONDO LIVING AND COMMUNITY LIVING.

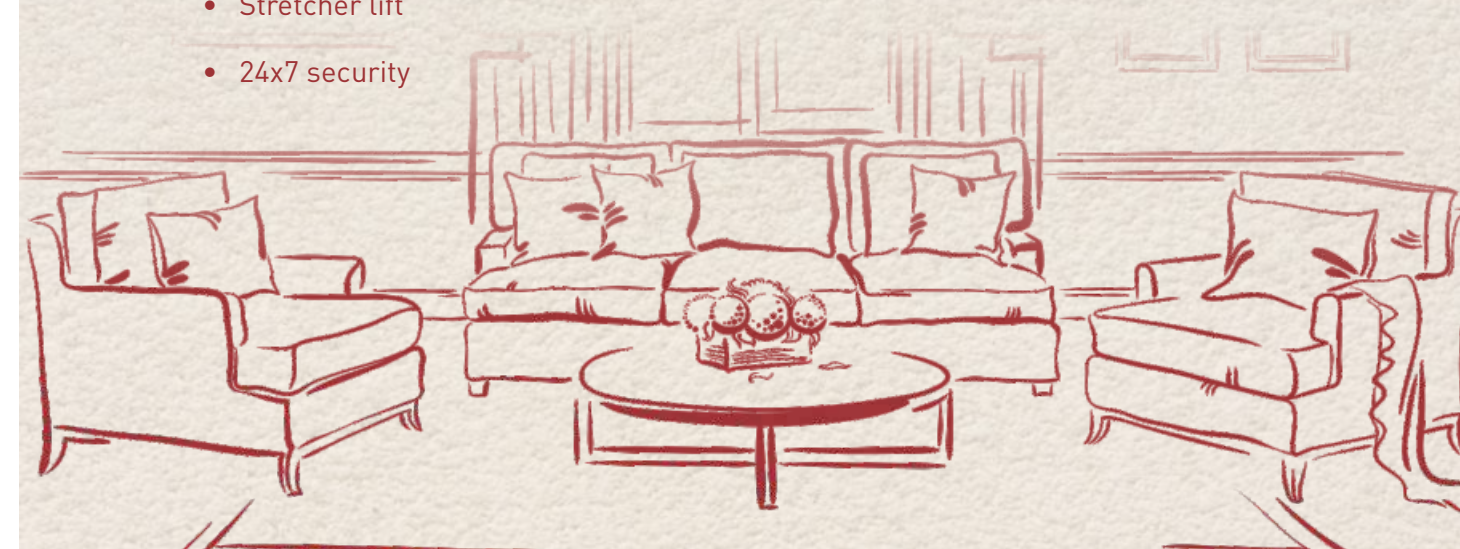
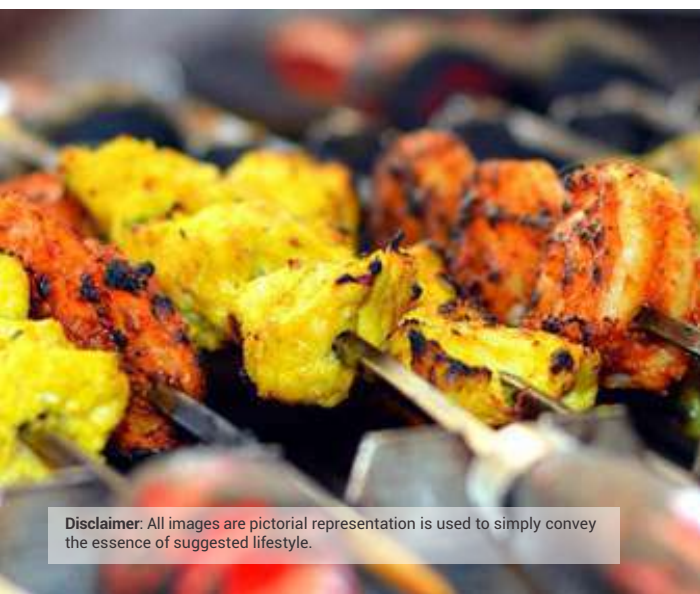
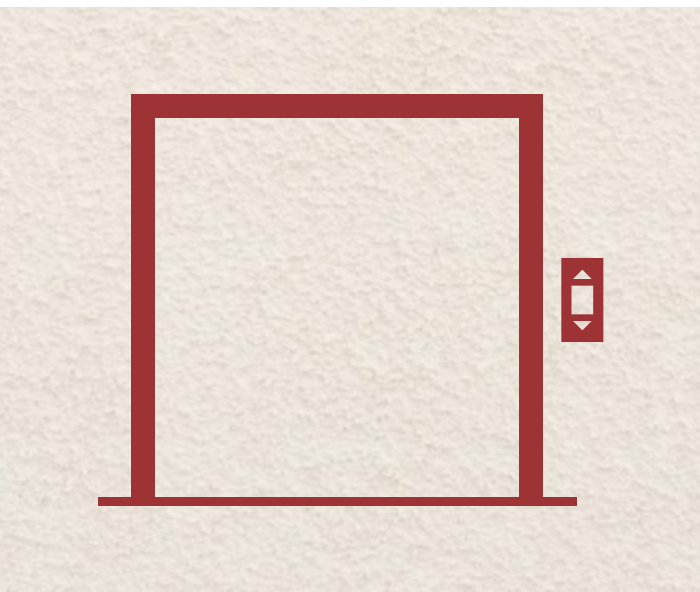
While individual living is highly valued and spaciouly provided, we also celebrate an atmosphere of openness where friends gather together, conversations are easy and life unfolds in a natural way. Our design fosters a sense of family and deep connection with the community.





AMENITIES

- Doctor's Room
 - Dining with kitchen
 - Gymnasium
 - Multipurpose hall cum Indoor games area
 - Physiotherapy room
 - Open library
 - Furnished guest rooms
 - Resident manager's office
 - Swimming pool with Jacuzzi and changing rooms
 - Stretcher lift
 - 24x7 security
- Outdoor landscape with following areas;**
- Pickle ball court
 - Community farming
 - Tree Orchard
 - Barbeque station
 - Lawn with stage area
 - Sitting courts
 - Acupressure Pathway
 - Outdoor exercise area
 - Ambulance service



Disclaimer: All images are pictorial representation is used to simply convey the essence of suggested lifestyle.



SPECIFICATIONS

FLOORING AND DADO WORK

- Anti-skid tile flooring in all rooms.
- Anti-skid tile flooring in all toilets
- Dado tiles above cooking platform up to 2 ft. above kitchen platform
- Dado tiles up to lintel level in toilets.

KITCHEN

- Cooking platform with granite top and stainless steel sink.
- Gas leakage detector
- Reticulated piped gas provision in kitchen.

DOORS

- Wooden door frames for all door except toilet doors.
- Main door with flush door shutters.
- Flush door shutter for all internal rooms and for master toilet.

WINDOWS

- Powder coated aluminum sliding windows with mosquito net & m.s safety grills.
- All windows & ventilators with granite sills.

PAINT AND FINISH

- Plastic emulsion paint to all internal walls and ceilings.
- Acrylic paint on exterior walls.

ELECTRICAL AND PLUMBING

- Electrical & plumbing provision for water purifier in kitchen.
- Electrical and plumbing provision for water heater and exhaust fans in all toilets.
- Hot and cold mixer/diverter in all toilets.
- Shower seat in master toilet.
- All toilets with grab bars.
- Concealed electrical wiring with modular switches.
- Concealed plumbing with premium C.P. fittings.
- A.C point in master bed.
- T.V point in living room and master bedroom.
- Telephone point in living & bedrooms.
- Electrical & plumbing provision for washing machine
- Generator backup to lifts, water pumps and common lights.
- Limited generator back up to every flat.
- Alarm bell / panic chord facility in master toilet & panic switch in bedroom.
- Video door phone
- Foot light in master bed
- Solar water heater provision for Master toilet.





I promise you, it feels great to play
freely without a care in the world.
Only for YOUR enjoyment of the game.
Your best chance to live this
experience is Athashri at Pebbles II.
Come. Make it your home.



Dear friends,

It is our firm belief that the measure of country's greatness is not just GDP but also how it treats its greying population! That is why around the turn of the millennium, we conceptualized and launched a unique concept in senior living, 'Athashri'.

It was based on a clear insight into the phenomenon of our young generation exploring uncharted waters and going to all parts of the world in search of better career opportunities on one hand and increasing life expectancy, fitness levels and affluence of senior citizens on the other.

Athashri leaves the younger generation to explore new horizons in full confidence that back home, their parents are leading a dignified, safe, convenient, healthy and joyful life.

Watching senior citizens pursue their hobbies and passion in a managed and secure environment of Athashri has been one of the biggest satisfactions of our life.

We are now launching 'Athashri at Pebbles II', that takes the concept of Athashri many notches higher in terms of size, amenities and ambience that feels like a hill resort.

We invite you all to Athashri at Pebbles II to find out for yourselves how this can usher in a phase of 'sunny days' in your life!

With warm regards,

TEAMATHASHRI



Inspired by **YOU**

Over three decades' track record of customer care and trust has seen Paranjape Schemes Construction Limited evolve into a multi-dimensional, multi-locational real estate company that stays in tune with the changing customers' needs and aspirations.

Over 190 completed projects are home to more than 10000 happy families that form 'The Happiness Network', a happy, vibrant community where neighbors become friends and friends become family!

28 ongoing projects across 8 cities encompass a wide range of offerings including 1 to 5 bedroom apartments, bungalows, row houses, penthouses, shops, offices, malls, multiplex, hotel, schools, senior citizen homes... products that touch every aspect of human life.

Every single activity at Paranjape Schemes is guided by our core values that form an integral part of our DNA -

- Transparent • Dependable • Rooted • Progressive
- Excellence • Caring • Inclusive

When you are a part of any Paranjape project, you are welcomed into a vibrant and a lively community that truly reflects the sense of oneness. The Happiness Network, as we call it, is synonymous with the spirit of New India where diverse people come together to form one harmonious community. The core idea of the network is to spread the feeling of belongingness to all our families. Neighbors becoming friends or even family is a reality at Paranjape. Added to the spirit of oneness, is the pride of owning the Happiness Network Card. All the residents get to enjoy several benefits, privileges, discounts and offers across retail outlets, restaurants etc. In addition to all this, Paranjape Schemes also conducts several community events that include Paranjape Schemes Premier League, Ganarang, Anandghan and much more. These are only few examples to illustrate how all roads at Paranjape lead to a vibrant, happy life. Come experience the rest!

