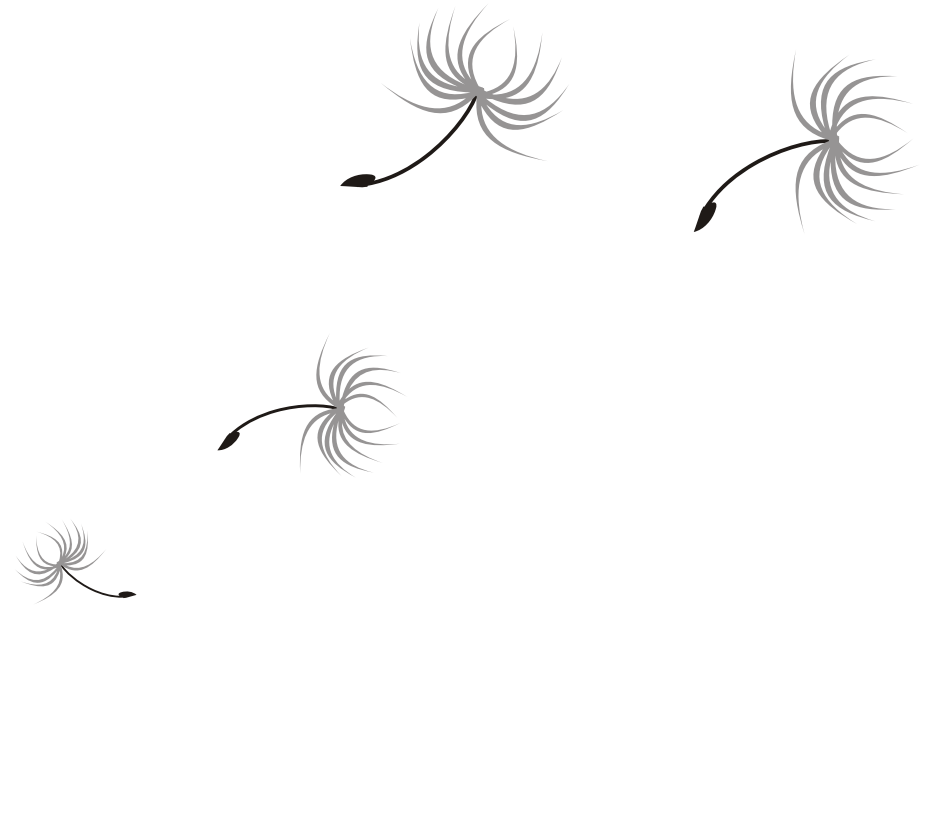


Ready-made lifestyle...  
Ready-made happiness!



*Cilantro*

*Flying with happiness*

at Green Groves, Wagholi





The gardens you'll stroll in, the swimming pool you'll dive into, the club house you'll relax in are all ready for a lifestyle you've always dreamt of. Water arrangements, huge green covers, daily conveniences are all ready too. The only thing awaited is, you. 12 storeys, 4 towers... standing beauties. 2 & 3 BHK apartments with great ventilation and greater views. And a ready-made lifestyle with all amenities and facilities ready for use... a short introduction to your life at Cilantro.



# Cilantro

*Flying with happiness*

**2 & 3 BHK apartments at Green Groves, Wagholi**





12 storeys, 4 towers, beautiful homes, ready amenities, your life at Cilantro is set amidst perfect bliss at Wagholi. Doors open to large spaces of 1080 sq.ft. and 1370 sq.ft. optimally planned for maximum sunshine, maximum breeze, maximum spaciousness and maximum happiness!



# Cilantro

*Flying with happiness*

**2 & 3 BHK apartments at Green Groves, Wagholi**

● Indicates Projects by Kolte-Patil Developers Limited

● Indicates City Major Landmarks



## Distances

Airport - 8 kms

Railway Station - 12 kms

Viman Nagar - 6 kms

Kalyani Nagar - 7 kms

Koregaon Park - 8 kms

Multiplex - 5 kms

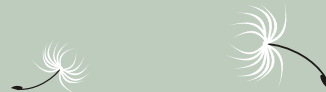
M. G. Road - 12 kms



*Cilantro*  
*Flying with happiness*

The locale is an upcoming pleasant, convenient and promising place with a great connectivity. Schools, colleges, medical facilities, markets, malls are conveniently located. Along with an uncompromising promise of the future.

A ready-made lifestyle is here to offer you effortless ready-made happiness!









# Cilantro

*Flying with happiness*

## Your ready to live lifestyle

### Lifestyle Amenities

- Designer entrance gate with security cabin
- Well-finished internal roads
- Boundary wall for internal security
- Decorative entrance lobbies for every building
- Landscaped garden with amphitheater
- Jogging track
- Children's play area
- Meditation / sit-outs for senior citizens
- Cascade at entrance gate
- Swimming pool
- Clubhouse with well-equipped gym, indoor games, steam, shower / changing rooms etc
- Automatic lift for each building
- Power back-up for lifts, common lights and other facilities
- Hydro-pneumatic pressure booster system for overhead water tank





# Cilantro

*Flying with happiness*

The best lies inside

## Specifications

- **Toilets :**
  - Glazed ceramic wall tiles [ Dado / Floor]
  - Sanitary ware (Colour – White)- W.H.B. & commode
  - Sanitary Fittings - CP fittings with Hot & Cold water
  - Exhaust fan provision
- **Kitchen :**
  - Glazed ceramic tiles dado up to 2' Ht.
  - Black granite kitchen platform with S. S. Sink with mixer
- **Flooring :** Vitrified flooring 2\*2 for entire flat
- **Dry Balcony area :** Provision for washing machine
- **Painting :** Oil bound distemper paint
- **Doors :** Main entrance door laminated flush door with architraves & SS finished hardware, Internal doors with both side painting & S. S. finished hardware
- Gas reticulated systems (Piped LPG gas) (Provision only)
- Solar water heater system for Master Bed toilet Only ( 50 litres per day only )
- Aluminium powder coated sliding door & window
- DG power back up for common lighting, lifts, club house
- Concealed electrical wiring with modular switches
- Concealed plumbing work





GARCLINIA

LICORICE

CALANDULA

BASIL

E-4

E-3

E-2

E-1

AMENITY

D-1

D-2

D-3

D-4

D-5



# Cilantro

*Flying with happiness*



# Cilantro

*Flying with happiness*

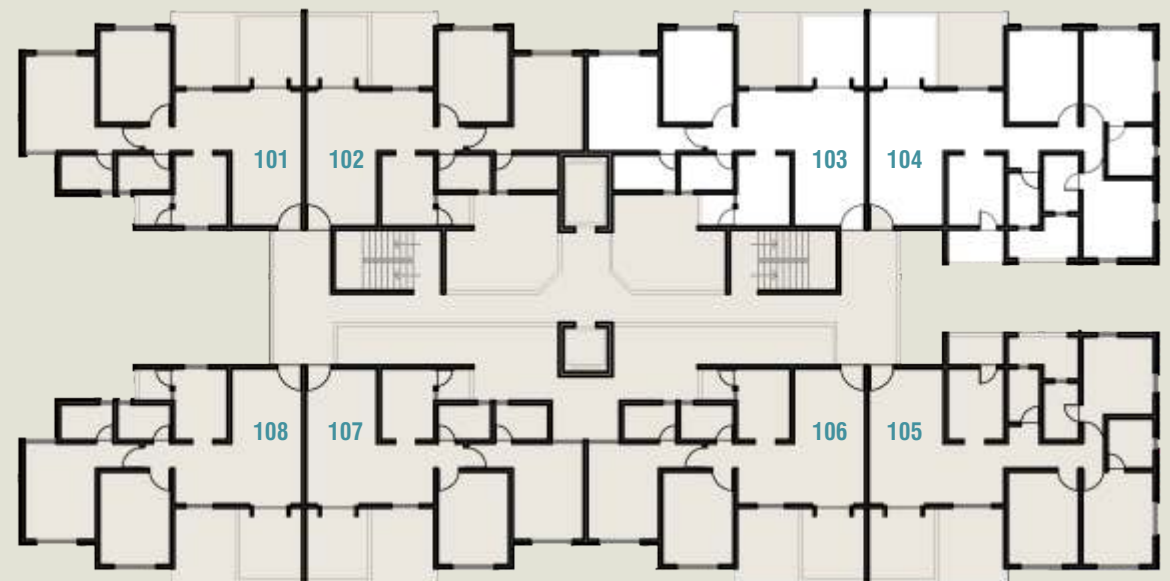
## 2 BHK



## 3 BHK

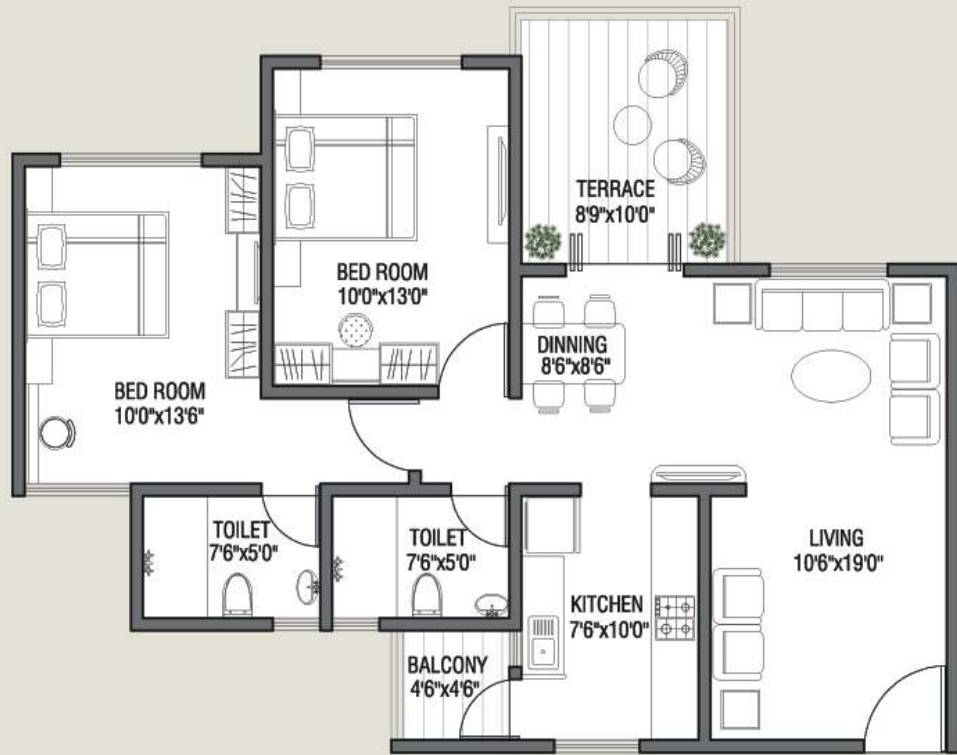
A look at your house  
**E4 - BUILDING**  
 TYPICAL FLOOR PLAN  
 (1st, 3rd, 5th, 7th, 9th and 11th Floor)

Flat No.	Area
103, 303, 503, 903, 1103	1090 sq.ft.
104, 304, 504, 904, 1104, 1105 105, 305, 505, 905	1370 sq.ft.
106, 306, 506, 906, 1106	1080 sq.ft.



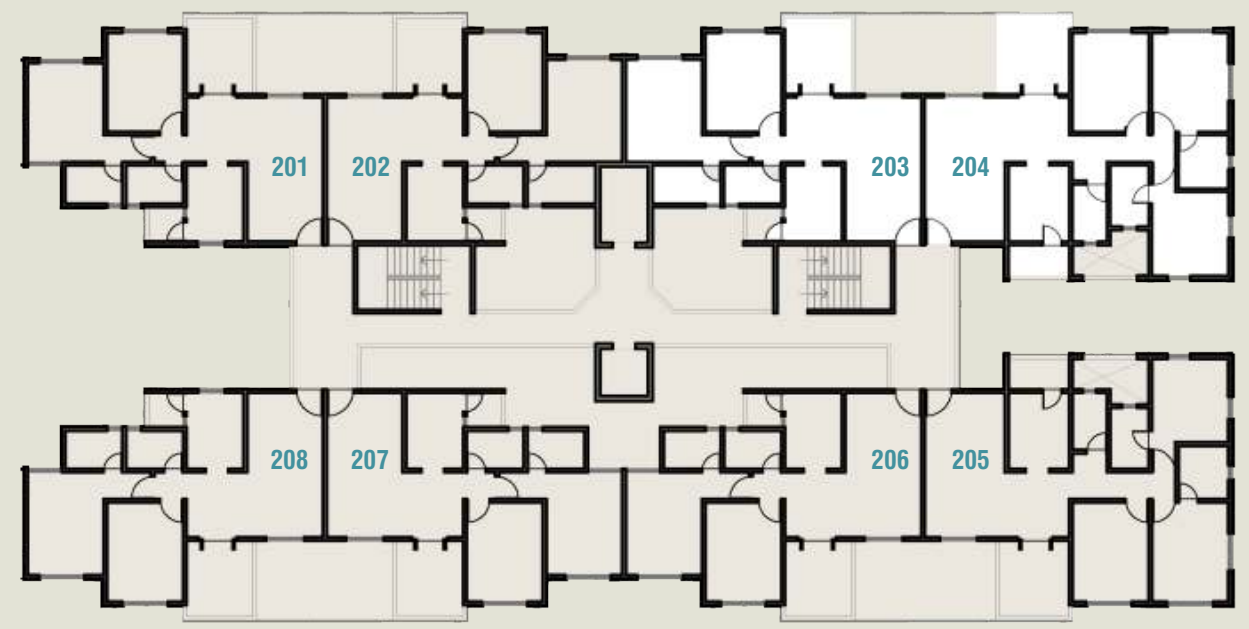
# Cilantro

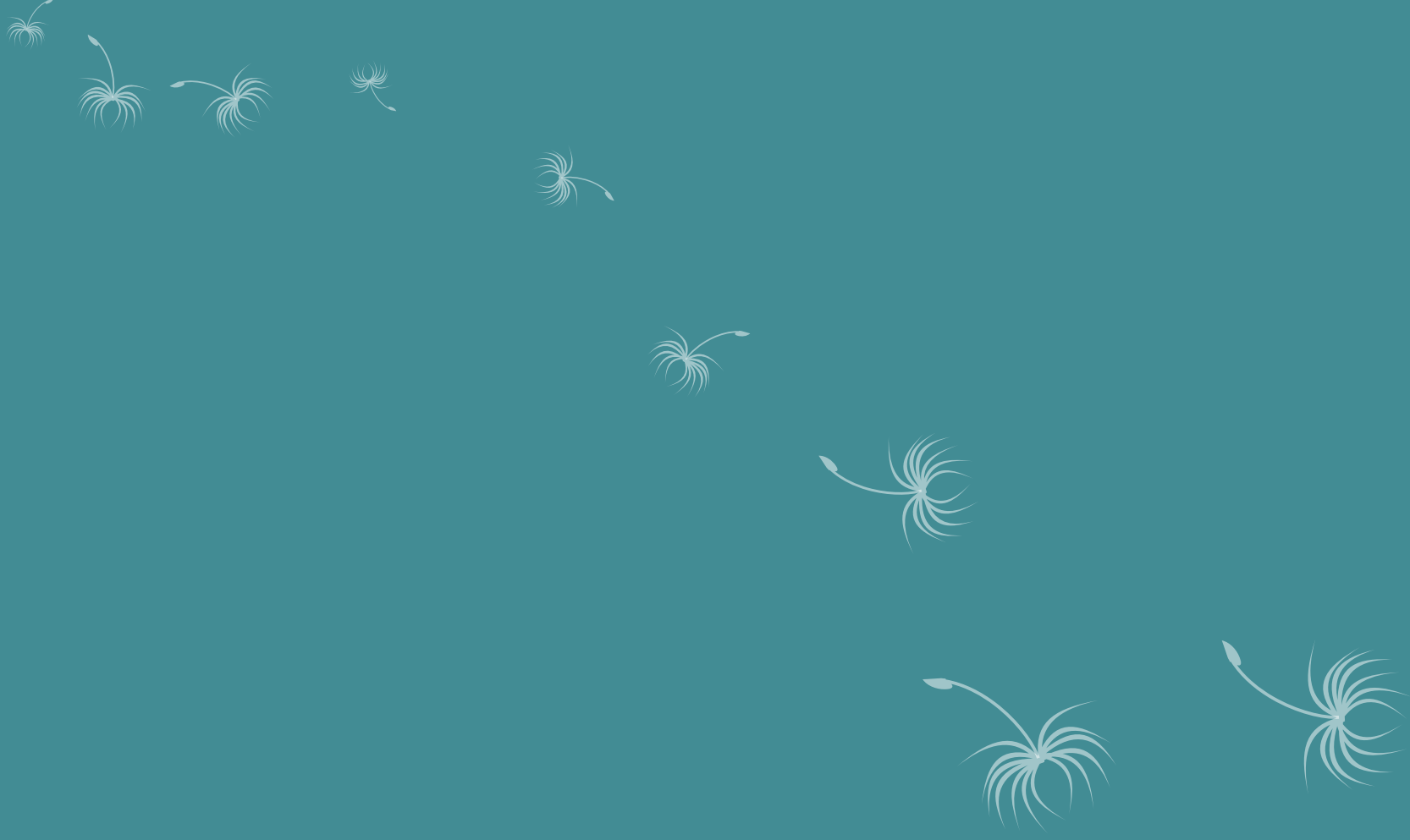
*Flying with happiness*



A look at your house  
**E4 - BUILDING**  
 TYPICAL FLOOR PLAN  
 (2nd, 4th, 6th, 8th and 10th Floor)

Flat No.	Area
203, 403, 603, 803, 1003	1090 sq.ft.
204, 404, 604, 804, 1004 205, 405, 605, 805, 1005	1370 sq.ft.
206, 406, 606, 806, 1006	1080 sq.ft.





## **KOLTE-PATIL DEVELOPERS LIMITED**

Site Office : Behind Moze College, Near RMC Garden, Wagholi. Contact : 020 27051150

2nd Floor, City Point, Dhole Patil Road, Pune - 411 001

Contact : +91 97655 50940 / 80075 97000

E-mail : sonali.karanjakar@koltepatil.com, dilip.singh@koltepatil.com

[www.koltepatil.com](http://www.koltepatil.com)