



LIVE THE PROGRESSIVE EMAAR LIFESTYLE

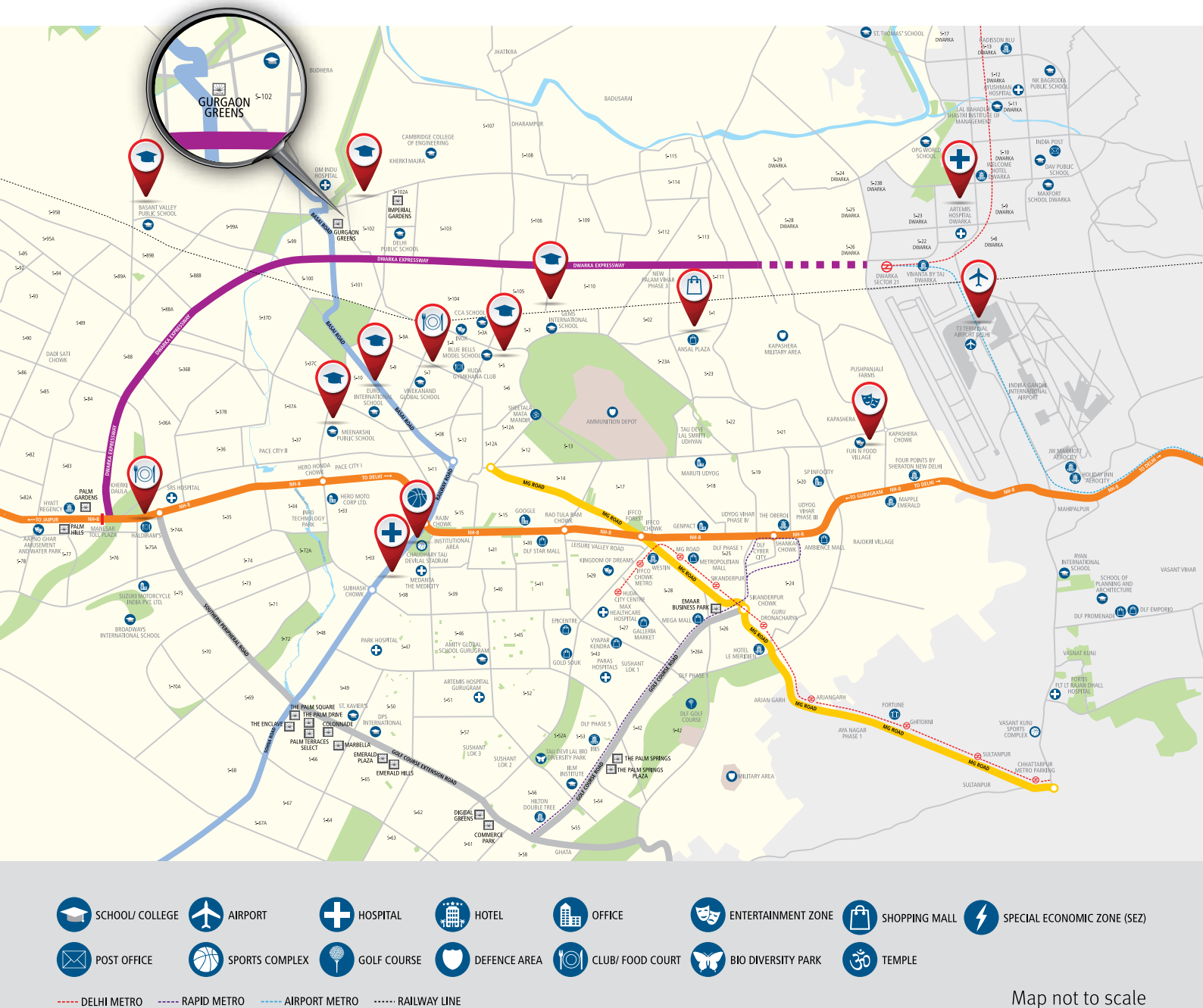
Enjoy progressive living with Emaar, with the affluent, active and eco-friendly lifestyle at **Gurgaon Greens**, Sector 102, Gurugram.

- ▶ 8 acres of open area
- ▶ 2 apartments per floor
- ▶ Modern Clubhouse
- ▶ Swimming pool
- ▶ Rooftop tennis court
- ▶ Kids' pool and play area
- ▶ Solar power for lighting

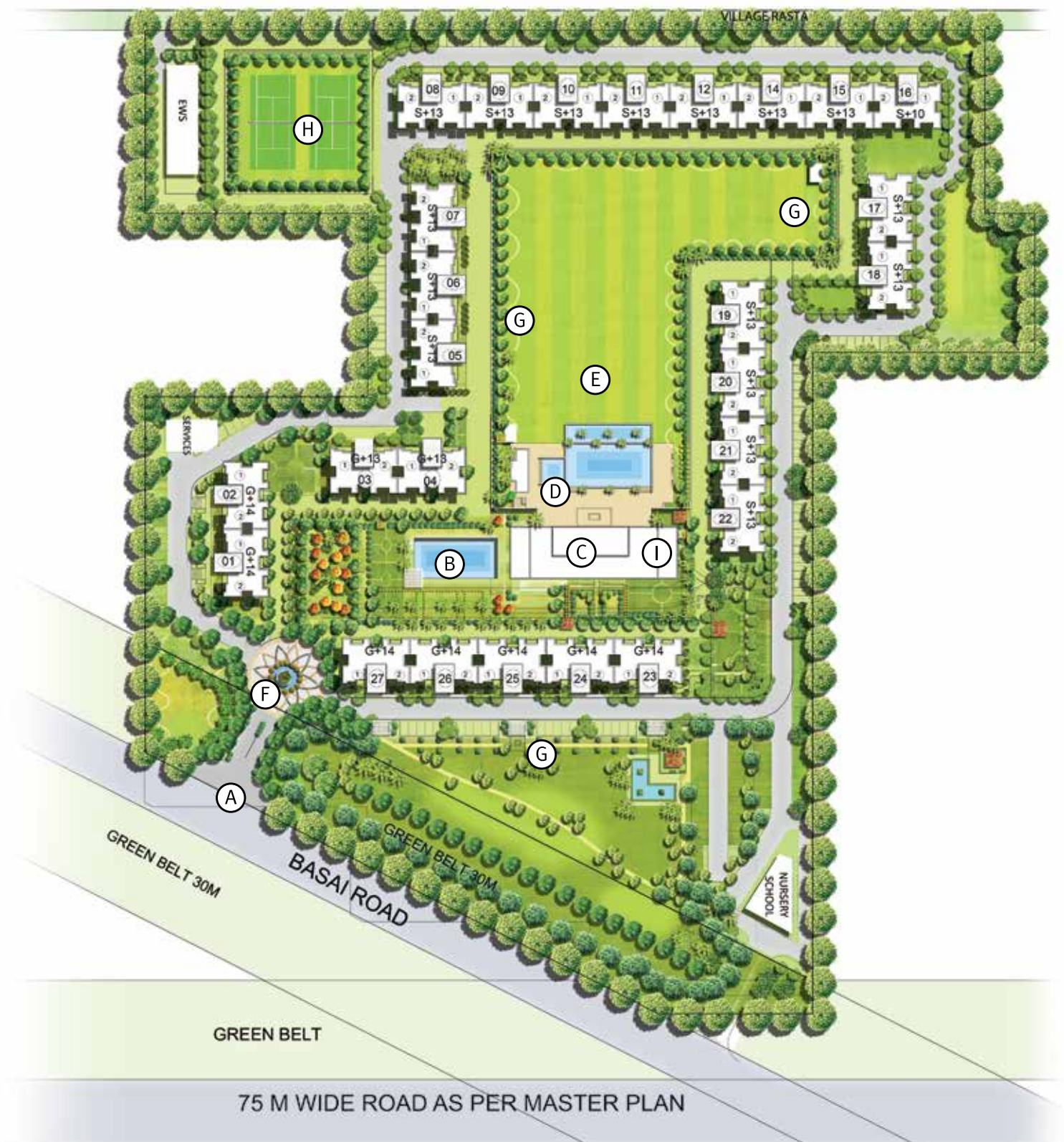


LOCATION

GURGAON
GREENS



Enjoy excellent connectivity to Gurugram, Delhi and Indira Gandhi International Airport (T3). Adjoining major roads (150 meters Expressway and 75 meters wide sector road), offers quickest access to the project. The now operational railway overbridge at Basai along with it's proximity to Gurugram's Business District and Delhi Public School, makes Gurgaon Greens a very well connected community.



Legend

- | | |
|--------------------------|--|
| A. Entry | F. Water Body |
| B. Ornamental Water Body | G. Jogging Track |
| C. Modern Clubhouse | H. MLCP and Tennis Courts |
| D. Swimming Pool | I. Gurgaon Greens Arcade at Ground Level |
| E. Central Greens | |



FLOOR PLAN

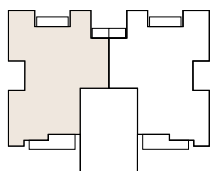
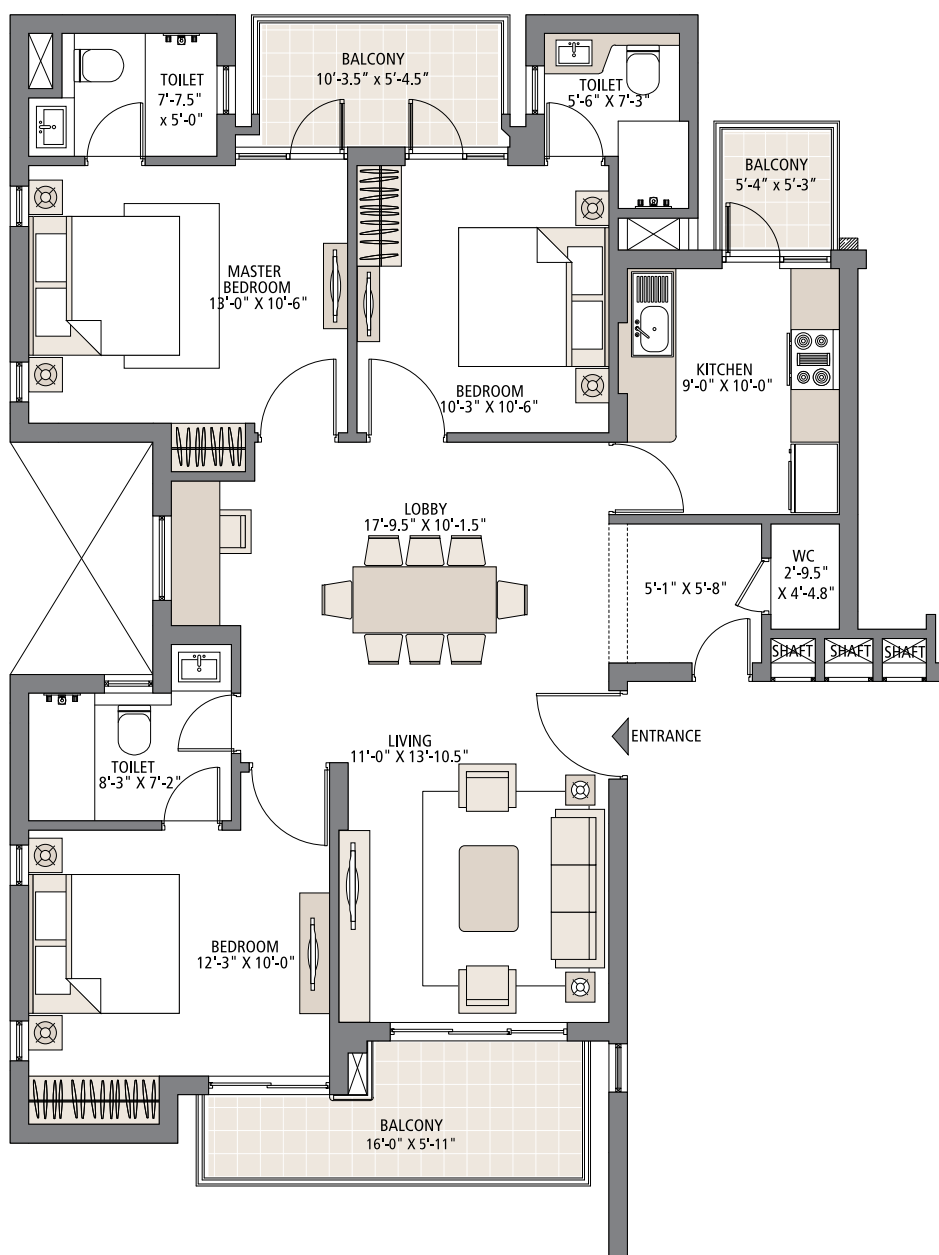
TYPICAL FLOOR

3 Bedrooms | 3 Bathrooms | Living | Dining

Carpet Area: 95 sq. mtr. (1,022.58 sq. ft.)

Balcony Area: 15.19 sq. mtr. (163.51 sq. ft.)

Super Area: 153.28 sq.mtr. (1,650 sq.ft.)



A revision of above plans has been applied with the authorities and same are also available for inspection before booking. Soft furnishing, cupboards, kitchen cabinets, furniture and gadgets are not part of the offering. All dimensions are from Masonry to Masonry. 1 sq. mtr. = 1.196 sq. yds. and 1 sq. mtr. = 10.764 sq. ft.

FLOOR PLAN



DUPLEX PENTHOUSE FLOOR PLAN - LOWER LEVEL

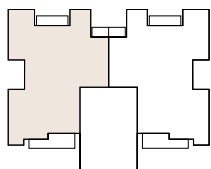
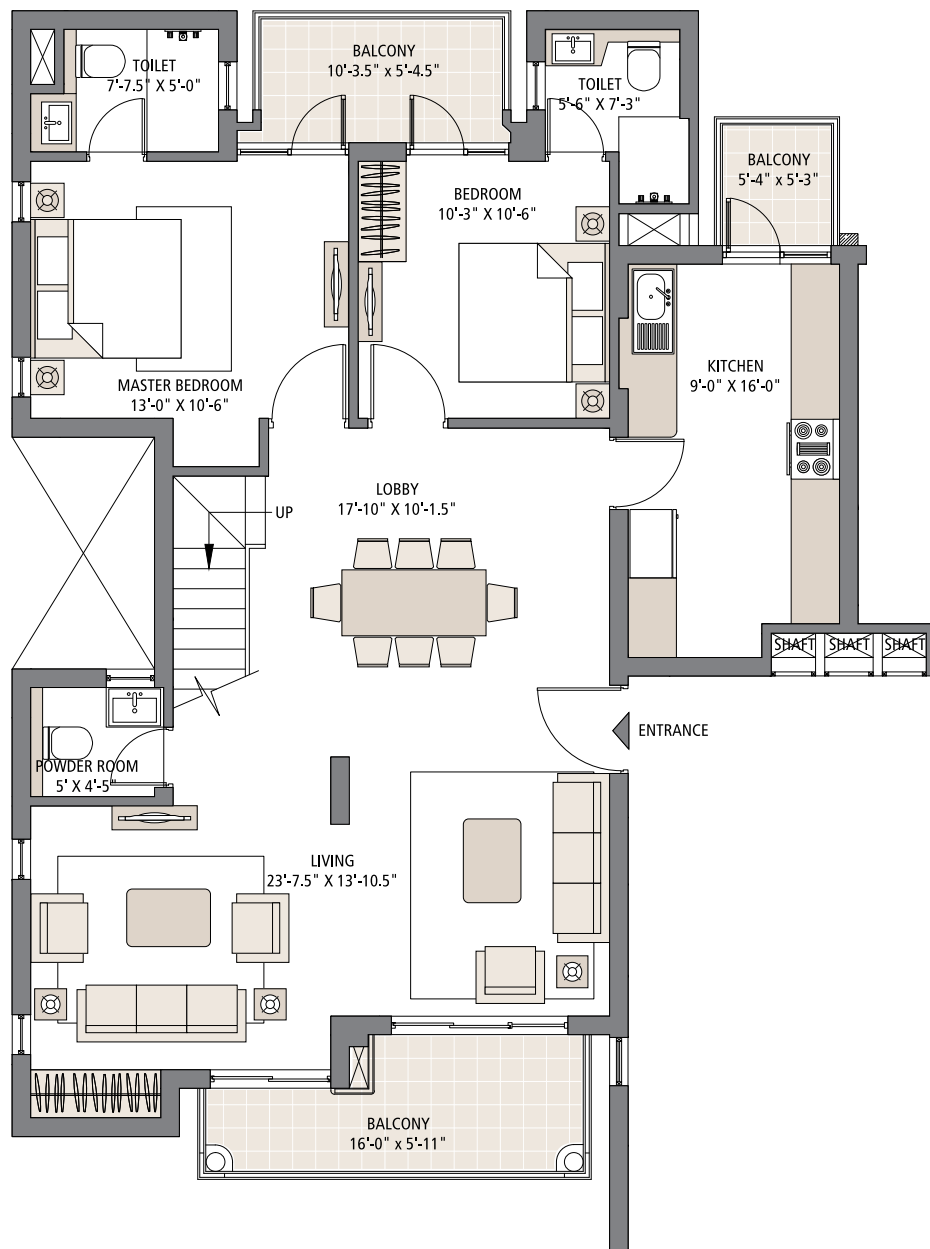
4 Bedrooms | 4 Bathrooms | Living | Dining | Family Lounge | Terrace

Carpet Area: 164.04 sq. mtr. (1,765.73 sq. ft.)

Balcony Area: 22.98 sq. mtr. (247.36 sq. ft.)

Terrace Area: 35.73 sq. mtr. (384.60 sq. ft.)

Super Area: 297.28 sq.mtr. (3,200 sq.ft.)



A revision of above plans has been applied with the authorities and same are also available for inspection before booking. Soft furnishing, cupboards, kitchen cabinets, furniture and gadgets are not part of the offering. All dimensions are from Masonry to Masonry. 1 sq. mtr. = 1.196 sq. yds. and 1 sq. mtr. = 10.764 sq. ft.

FLOOR PLAN

GURGAON
GREENS

DUPLEX PENTHOUSE FLOOR PLAN - UPPER LEVEL

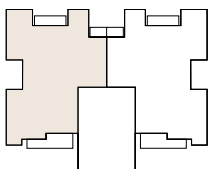
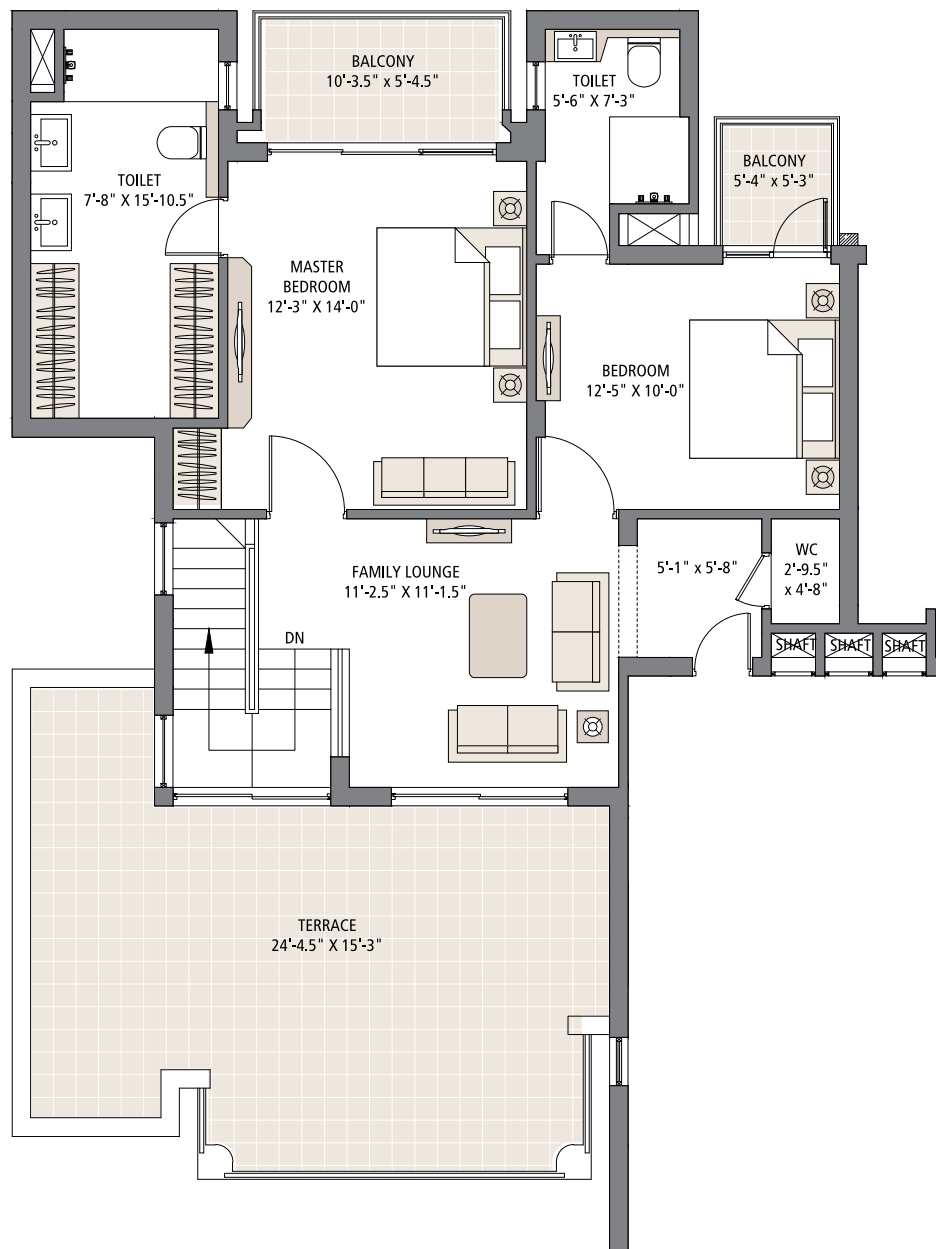
4 Bedrooms | 4 Bathrooms | Living | Dining | Family Lounge | Terrace

Carpet Area: 164.04 sq. mtr. (1,765.73 sq. ft.)

Balcony Area: 22.98 sq. mtr. (247.36 sq. ft.)

Terrace Area: 35.73 sq. mtr. (384.60 sq. ft.)

Super Area: 297.28 sq.mtr. (3,200 sq.ft.)



A revision of above plans has been applied with the authorities and same are also available for inspection before booking. Soft furnishing, cupboards, kitchen cabinets, furniture and gadgets are not part of the offering. All dimensions are from Masonry to Masonry. 1 sq. mtr. = 1.196 sq. yds. and 1 sq. mtr. = 10.764 sq. ft.

ECO LIVING

Soaring high above the lush green surroundings, awaits a lifestyle even the upper crust craves.

ACTIVE LIVING

Make the most of each day at tennis courts, swimming pool, jogging tracks and kids' pool and play area.

AFFLUENT LIVING

Enjoy community living, the true Emaar way with modern Clubhouse.

