



SOBHA

PASSION AT WORK

Far from the madding crowd's ignoble strife
Their sober wishes never learn'd to stray;
Along the cool sequester'd vale of life
They kept the noiseless tenor of their way.

-Thomas Gray

Sobha Developers Ltd.

#368, 7th Cross, Wilson Garden
Bangalore - 560 027
Karnataka, India.
Tel : + 91 80 43490000
Fax : + 91 80 22120852

Email : marketing@sobha.co.in
URL : www.sobha-amethyst.com
SMS : Sobha <space> your email to 56767

There's a place in your mind that we know about. Where silence resides and where the birds chirp and sunlight streams in through the window.

It's a place removed from the madding crowd. A place you visit when you want some peace and quiet. Where thoughts are alien and love exists.

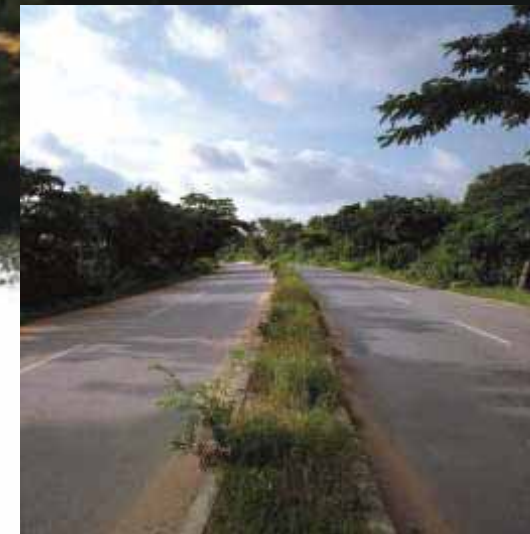
A home of your dreams.


AMETHYST SOBHA
WHITEFIELD

Latitude 12.9667 Longitude 77.7500 Altitude (feet) 2178
Lat (DMS) 12° 58' 0N Long (DMS) 77° 45' 0E Altitude (meters) 846

WHITEFIELD

Why is it that Whitefield has been the one suburb (Bangalore's first one, incidentally) that has always caught the fancy of visitor's to Bangalore? First came the Englishmen with their nice and cozy cottages and then came the rich and famous and the gated communities followed.



And with IT Parks like ITPL and others dotting the area it is also a great place to look for a home if you work in the IT industry. Yet Whitefield has kept its old world charm in certain areas in and around. In one such beautiful remnant of the past is where we chose to build Amethyst.

The breathing spaces, the old world charm, the great schools must have helped to attract people here. In recent years it is the infrastructure. The flyovers that whizz you to the airport, the nice smooth roads that intersect and cross and draw rings around the city. The big hospitals (Satya Sai Baba Hospital) and the holy places (Brindavan, Our Lady of Lourdes Church) help making Whitefield a wonderful place to have a home.

IN WHITEFIELD

SCHOOLS

The International School Bangalore
The Deen's Academy
Indus International School
The Brigade International School
St. Joseph's Convent School

HOSPITALS

Sri Sathya Sai Hospital
Sankara - Eye Care Institution
Karunashraya
VIMS - Speciality Hospital

HOTELS

Vivanta by Taj
Ginger
Fortune
Radisson
Chalukya

MALLS

Forum Value Mall
Cosmos Mall

A few minutes from the sprawling IT developments in Whitefield, the Sobha Amethyst offers you all the amenities of a modern condominium and more. From tennis courts to gymnasiums and a pool, but all this at a much lower cost than most condominiums of today. And like every other Shobha home, the Amethyst too is built with care and attention and with the discerning customer in mind.

The Amethyst is made up of three bedroom residences and is spread across six acres of pristine land.

NATURE & LUXURY



Type: Luxury apartments Land / Plot Area:263788.18 sq ft or 24506.520 sqm
Total No. of Units / Apartments: 368 nos. No. of Floors: Double Basement,
Ground + 17 & 18 floors Super-Built Up Area of Individual Unit: 3 Bedroom :
1652.644 - 1780.973 Sq.Ft.

MODEL APARTMENT



STRUCTURE

Shell - RCC frame structure with masonry partitions. **Masonry** - Engineered concrete blocks

FLOORING & TILING

Living & Dining - Vitrified
Kitchen - Ceramic - antiskid
Utility - Ceramic - antiskid
Bedrooms - Vitrified
Master Bathroom - Ceramic - antiskid
Other Bathrooms - Ceramic - antiskid
Sit-out - Ceramic - antiskid

SANITARY & PLUMBING

Water Closets - Wall hung WC (of reputed make), with flush valves
Health Faucets - only bib taps are provided
Wash Basins - Rectangular wash basins of reputed make
Kitchen Sink - Single bowl single drain stainless steel sink. Cockroach traps of reputed make
Bathtubs - NA
Overhead Showers - Pressure adjustable overhead shower (of reputed make)
Faucets - Of reputed make
Plumbing - Provision for drinking water to kitchen, STP treated water for flushing & landscape, domestic water for other purpose.

DOORS & WINDOWS

Frames - Wooden & aluminium
Window - Frame : aluminium window shutter : Aluminium with glass
Finish : Powder coated/anodised"
Door shutters - Masonite skin Forex sheet
Finish - Lacquered melamine finish
Hardware - Of reputed make
Imax Hinges - Of reputed make
Door stoppers - Of reputed make

ELECTRICAL

Wiring - Provided with PVC insulated fire retardant Multistrand copper wire as per IS 694,1100V grade (4/2.5/1.5/1 Sq.mm size. of reputed make)
Earthing - Provided
Switches - 5A, 5/15A SP & 20A DP (of reputed make)

PAINT

Paint - Plastic emulsion
Electro - Domestic equipment
Hob - Only electrical provision made available
Chimney - Only electrical provision made available
Geysers - Only electrical provision made available

UTILITIES / SERVICES

Back-up power - 1KW per apartment & 100% back-up for common facilities. (generator back-up)
Water - Borewell water / outside water.
Rainwater Harvesting - Percolation pits are provided.
Sewage Treatment - Provided
Elevators - Of reputed make : 10 Lifts of 8 - passengers & 4 Lifts of 16 - passengers

FACILITIES & AMENITIES

Club House - Club house with a common space for parties / functions
Swimming Pool - Maximum depth of pool - 1300mm
Gym - A modern gymnasium with equipments
Sporting Facilities - Billiards, Cards & Carrom

LANDSCAPING

Soil - Good quality red soil and sand mixture with manure shall serve as the base layer for landscaping
Irrigation - Sprinklers and a drip irrigation system shall be provided for landscaped areas
Soft Landscaping - All garden areas shall be completely landscaped

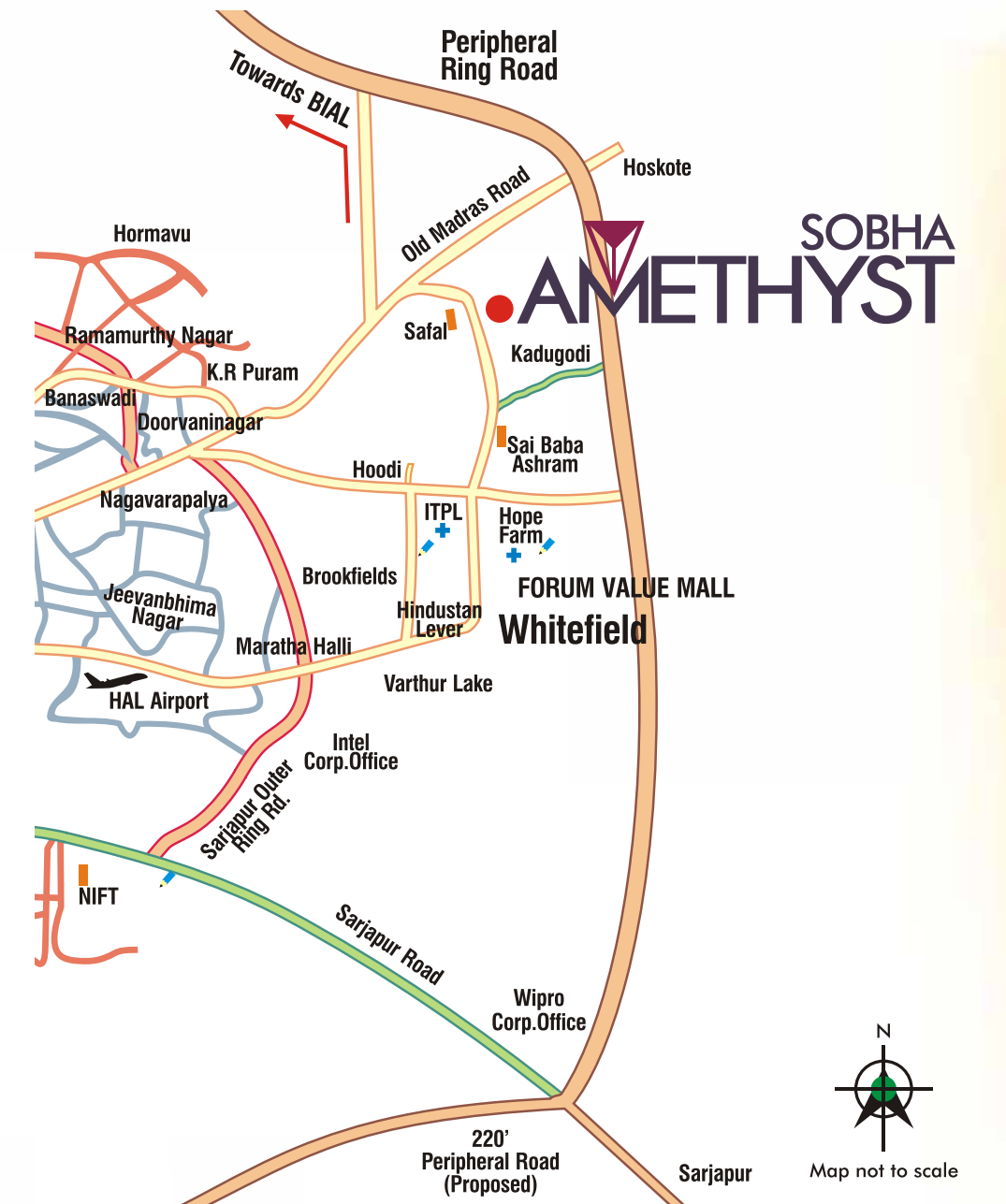
Note: All specifications above are subject to change & decisions taken from time to time by the developers shall be final and binding. In the brands mentioned above, the developers may use equivalent brands at their discretion.

Fittings and furniture shown in these pictures are not part of the standard apartment.

SITE PLAN



LOCATION MAP

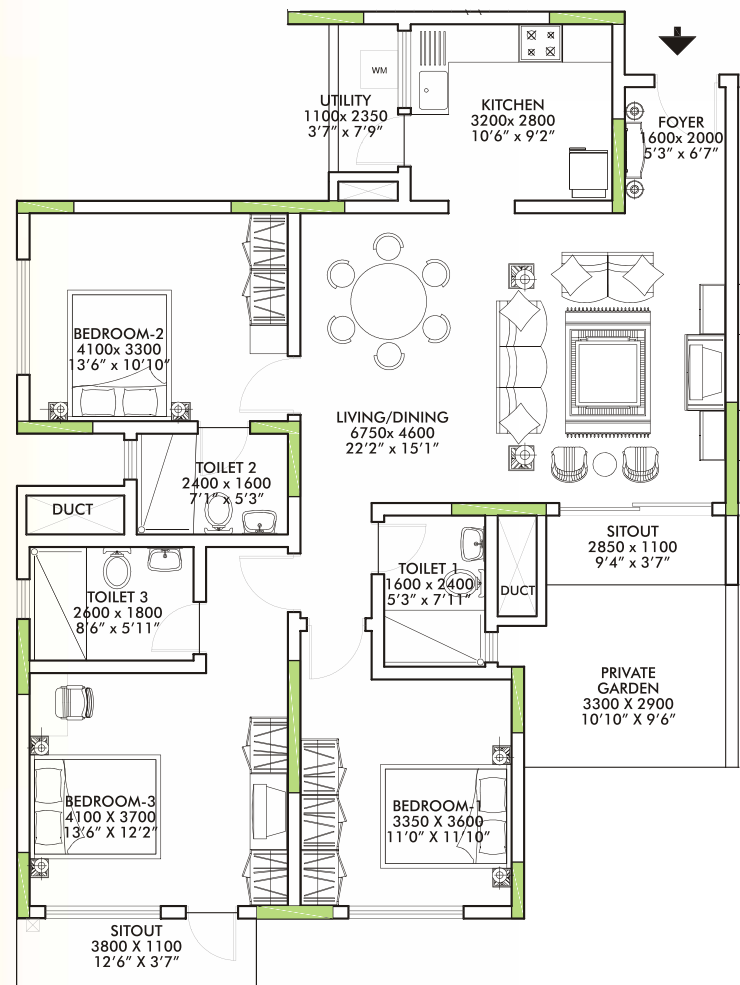
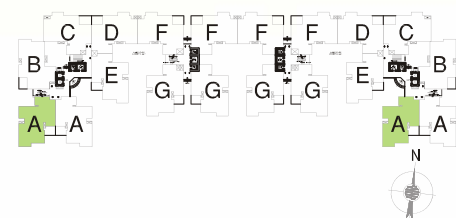


DISTANCES FROM SOBHA AMETHYST
 ITPL : 7 Km.
 Sai Baba Ashram : 4 Km.
 Old Madras Road : 2 Km.
 BIAL via Peripheral Ring Road : 45 Min.

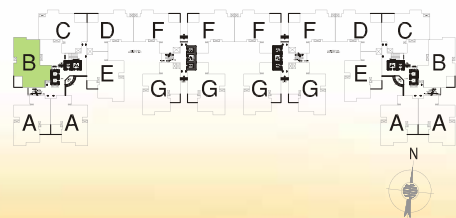
FLOOR

PLANS

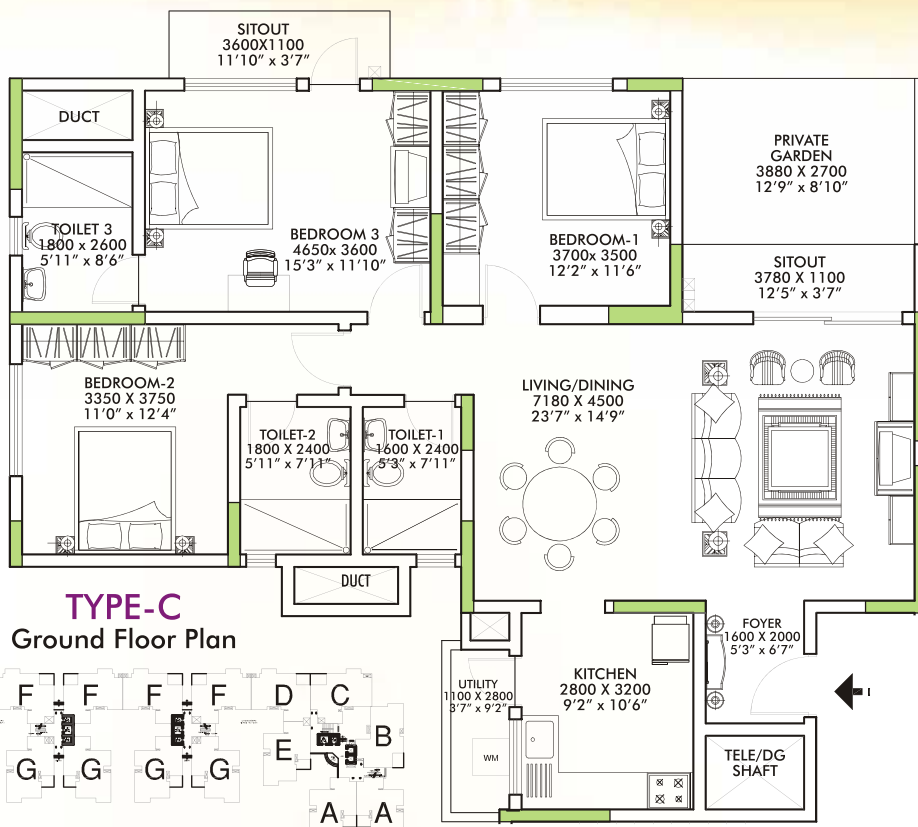
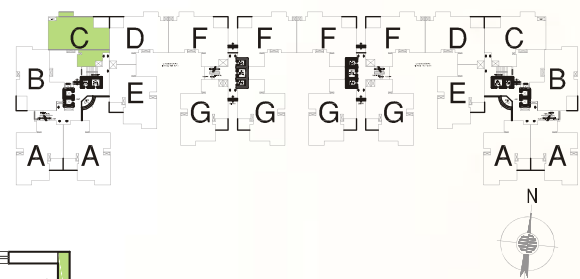
TYPE-A
Ground Floor Plan



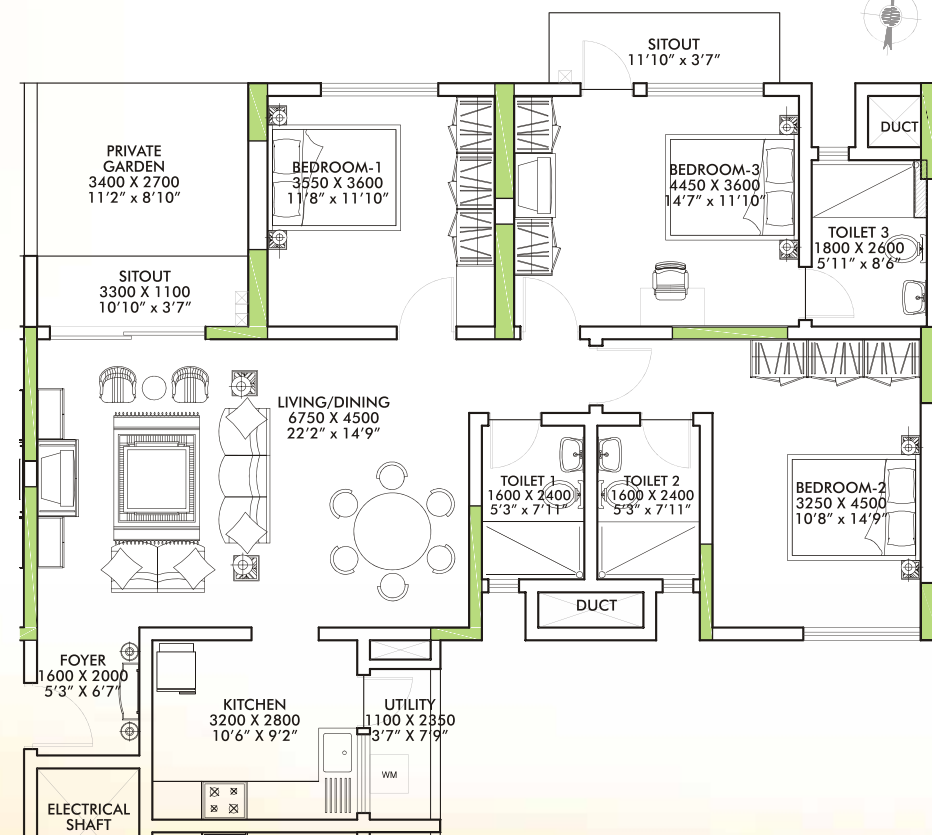
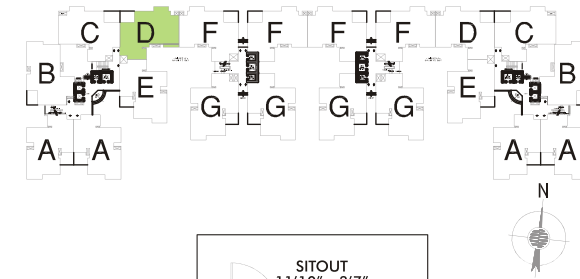
TYPE-B
Ground Floor Plan



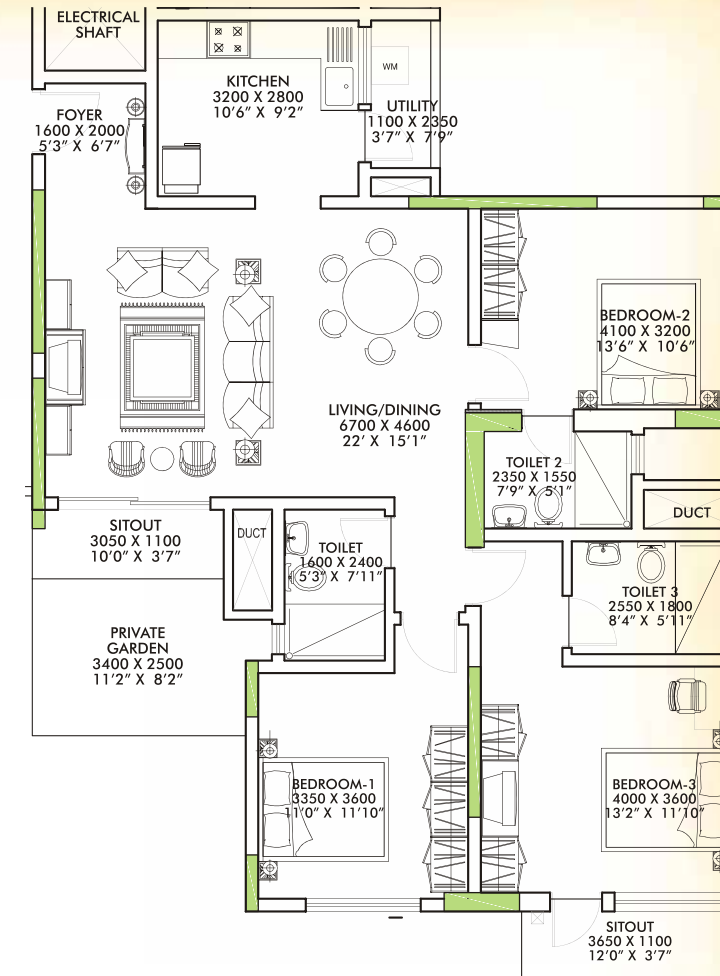
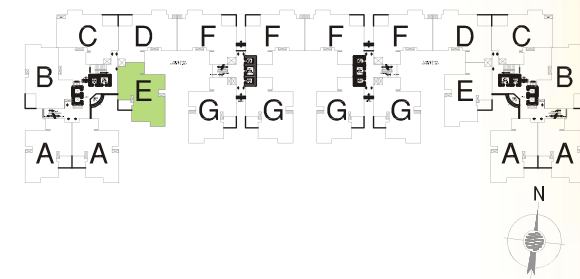
TYPE-C
Ground Floor Plan

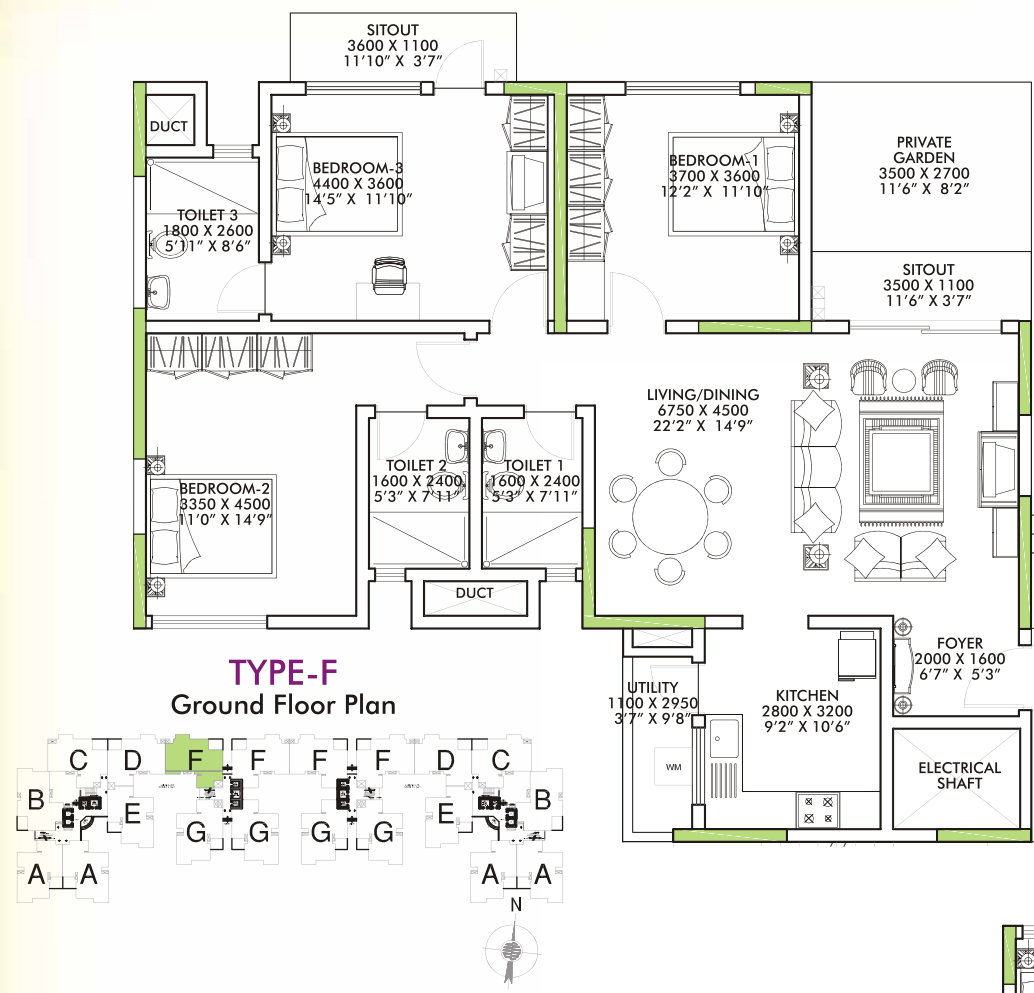


TYPE-D
Ground Floor Plan

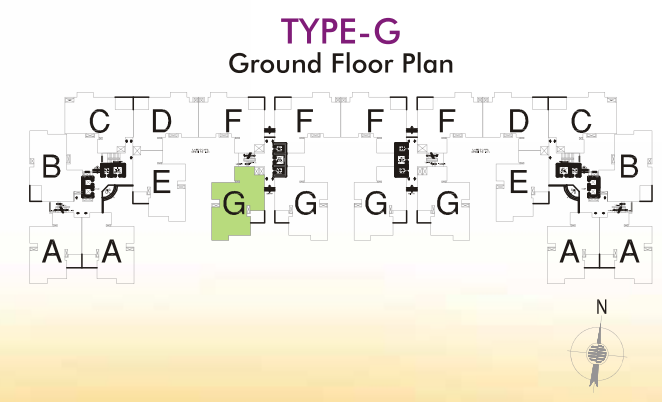


TYPE-E
Ground Floor Plan

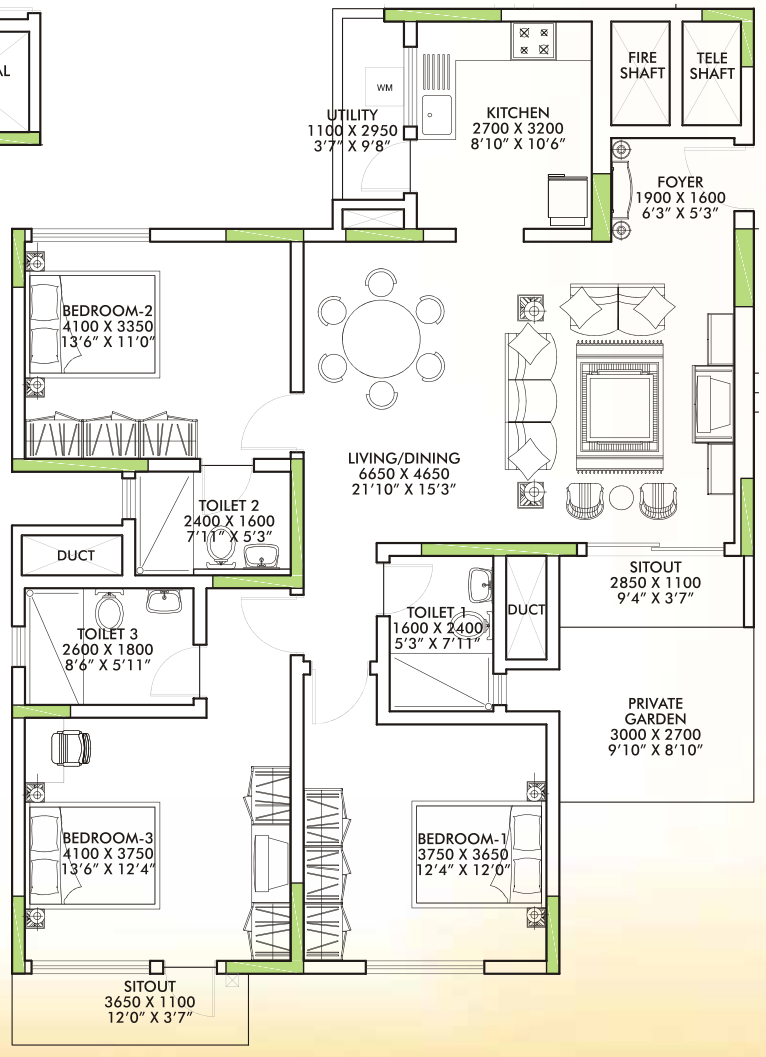




TYPE-F
Ground Floor Plan



TYPE-G
Ground Floor Plan



SOBHA

It was in the year 1995 that Mr. P N C Menon founded Sobha developers with the clear vision to "transform the way people perceived quality" in the real estate industry. Returned home from the Middle east where he was acclaimed for quality interiors and construction since 1977. His intuition and business sense buttressed with the exhilaration of returning to his homeland led him to believe that he could make Quality the key differentiator between his proposed venture and other construction companies. Over the intervening years this vision continues to be the bedrock of all endeavours.

Today Sobha developers, a Rs. 10 billion plus company is one of the largest and only backward integrated company in the construction arena. Since its inception Sobha's reputation is built on rock solid values, benchmark quality standards, uncompromising business ethos, focused customer centric approach, robust engineering, in-house Research and Development and transparency in all spheres of conducting business, which have contributed in making Sobha a preferred real estate brand in both residential and commercial segments. This was emphatically endorsed during its IPO in 2006 when the issue was oversubscribed by 126 times creating history (being the first event of its kind in Indian capital markets).

The company has gone from strength to strength completing 30.76 million square feet of area as of April 2009, 50 completed residential/ commercial in house projects, 31 ongoing residential/ commercial projects and 140 contractual projects, 34 ongoing contractual projects beginning with the first residential project in Bangalore in 1997. An industry leader in Karnataka, contractual projects have also been constructed in Kerala, Andhra Pradesh, Orissa, Tamil Nadu, Punjab, Harayana and Maharashtra.

The who's who of corporate India form the client list including stalwarts like Infosys Technologies, Hewlett Packard, Dell, the Taj Group, Mico, Timken and others. Residential projects include premium apartments, villas and row houses with amenities like club houses, shopping centres and swimming pools as a value addition to the Sobha lifestyle that the company brings home to all its clients.