



It's worth...  
sharing

ALPINE  
**Fiesta**  
True value for your money



NO COMMON WALLS\*

NO COMPROMISE

\* Only few flats with common walls



**CREDAI**  
BENGALURU

[www.alpinehousing.com](http://www.alpinehousing.com)

NEAR HOODI JUNCTION,  
WHITEFIELD

ALPINE  
**Fiesta**  
True value for your money



## FABULOUS FACILITIES

Tennis Court, Skating Rink, Badminton Court, Half Basketball Court, Children Play Area, Cricket Pitch, Swimming Pool, Toddlers Pool, Trampoline

**Clubhouse:**

Gym, Indoor games Hall, Table Tennis

Snooker, Chess, Carroms, Departmental Store, Multipurpose Hall,

Party Hall with Pantry & Utility, Beauty Parlor, Laundry

ALPINE  
**Fiesta**  
True value for your money

# LOCATION ADVANTAGES

Not to scale



**Schools :** The Deen's Academy, St.Thomas School, Euro kids, Delhi Public School, Whitefield Global School, Vibgyor High School, Greenwood High

**Offices :** ITPL, EPIP Zone, Brigade Tech Park

**Retail :** Big Bazaar, Namdhari's Fresh Supermarket, Hypercity, Forum Value Mall

**Inorbit Mall, Park Square Mall, Phoenix Marketcity**

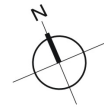
**Hospitals :** Vydehi Hospital, Sathya Sai General Hospital

# SITE PLAN



## Legend

1. Entry/Exit
2. Driveway
3. Parking
4. Children play area
5. Cricket pitch/Badminton Court
6. Half court - Basketball
7. Senior citizen lounge
8. Tennis court
9. Swimming pool
10. Clubhouse
11. Skating rink
12. Transformer & STP

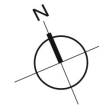


ALPINE  
**Fiesta**  
 True value for your money

# BLOCK: CONTENTO TYPICAL FLOOR PLAN



KEY PLAN



FLAT NO	TYPE	AREA IN SQ.FT
201-901	2 BHK	1003
202-902	3 BHK	1399
203-903	2 BHK+S	1209
204-904	2 BHK	936
205-905	2 BHK	1012

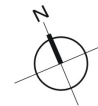
## BLOCK: CELEBRACIA TYPICAL FLOOR PLAN



ALPINE  
**Fiesta**  
 True value for your money



FLAT NO	TYPE	AREA IN SFT
201-901	2 BHK	946
202-902	2 BHK	943
203-903	2 BHK	982
204-904	2 BHK	968
205-905	2 BHK	974
206-906	2 BHK	1011
207-907	3 BHK	1314



BLOCK: FELECITA TYPICAL FLOOR PLAN



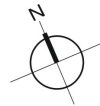
FLAT NO	TYPE	AREA IN SFT
201-901	2 BHK	1003
202-902	2 BHK+S	1197
203-903	3 BHK	1396
204-904	2 BHK	936
205-905	2 BHK	1025



# BLOCK: FESTIVO TYPICAL FLOOR PLAN



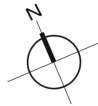
FLAT NO	TYPE	AREA IN SFT
201-901	2 BHK+S	1221
202-902	2 BHK	943
203-903	2 BHK	1025
204-904	2 BHK	1001
205-905	3 BHK	1399



# BLOCK: FESTA TYPICAL FLOOR PLAN



KEY PLAN

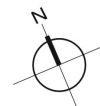


FLAT NO	TYPE	AREA IN SFT
201-901	2 BHK	978
202-902	2 BHK	1003
203-903	3 BHK	1331
204-904	2 BHK	939
205-905	2 BHK	936
206-906	2 BHK	1020
207-907	2 BHK	969

# BLOCK: GELUK TYPICAL FLOOR PLAN



FLAT NO	TYPE	AREA IN SFT
201-901	3 BHK	1439
202-902	2 BHK	936
203-903	2 BHK	1026
204-904	2 BHK	996
205-905	2 BHK+S	1214



## CIVIL SPECIFICATIONS

### Structure:

Seismic II Zone RCC framed structure, Concrete solid block masonry

### Plastering:

All internal walls smoothly plastered

### Painting:

Oil bound distemper for the interiors. Cement paint for exteriors and common areas

### Flooring:

Vitrified tiles flooring for living room, dining room, kitchen and bedrooms. Anti-skid tiles in toilets

### Doors:

Teak wood frame for main doors, Hardwood frame for others. Moulded design door shutters.

Superior quality SS Hardware. Balcony doors of UPVC with glass panel.

### Windows:

UPVC windows with glass panel and mosquito mesh

### Toilets:

Ceramic glazed tiles upto 7ft. Height. Superior quality sanitaryware of Cera or equivalent and granite counter top. High quality chromium -plated fixtures-jaguar or equivalent

### Kitchen:

Granite platform with superior stainless steel sink. 2 ft glazed tiles dado above kitchen platform.

### Entrance Lobby:

Elegant entrance lobby with granite/vitrified flooring and cladding of lift walls

### Electrical:

Concealed conduits with good quality copper wire—Anchor or equivalent. Elegant modular switches-ABB or equivalent. For safety, one Earth Leakage Circuit Breaker(ELCB) for each apartment. One Miniature Circuit Breaker(MCB) for each room provided at the main distribution base in each flat. Telephone point in living and master bedroom.

### EPBX:

EPBX will be installed with cable done upto each apartment, operated by an authorized service provider. Intercom facility from each apartment to security room, club house and other apartments.

### Back up Generator:

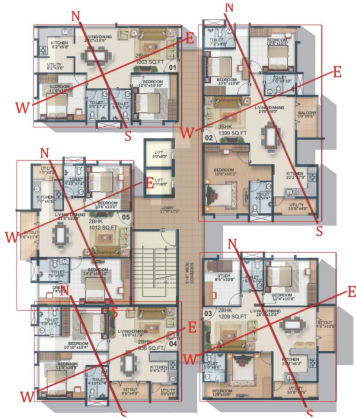
Standby generator for lights in common areas, lifts and pumps. Back up generator to provide 24 hour back up to each apartment

### Lifts:

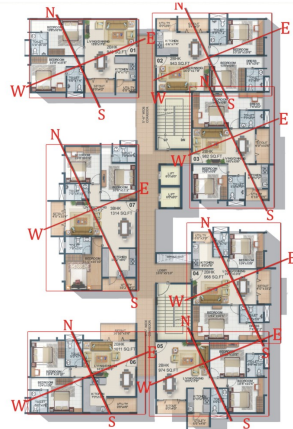
Two automated high performance passenger lifts in every block.



CONTENTO



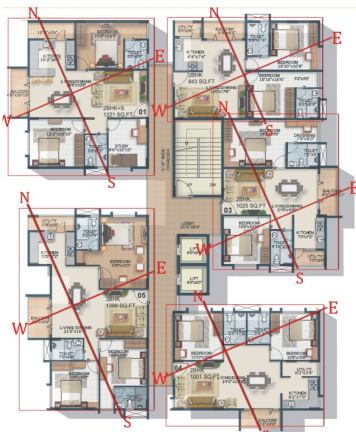
CLEBRACIA



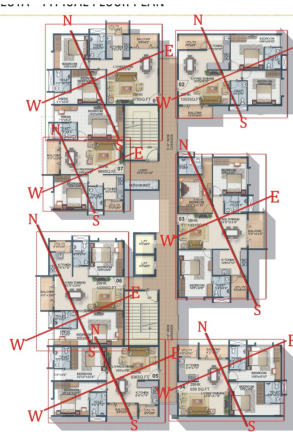
FELECITA



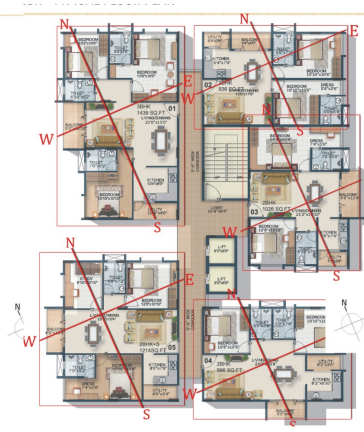
FESTIVO



FESTA



GELUK



**VAASTU  
PLANS**

ALPINE  
**Fiesta**  
True value for your money



It gives you all the reasons to rejoice.

Aesthetically designed apartments with **no common walls** that bask in natural light and abundant air. And dotted with some of the most exclusive facilities and a fabulous club house. Situated close to the ITPL , EPIP zone, major hospitals, leading educational institutions, Malls, Supermarkets and all other necessities. And most importantly, ALPINE FIESTA is quite affordable. So go ahead, rejoice.

Alpine Housing Development Corporation Limited, 302, Alpine Arch, 10, Langford Road, Bangalore - 560 027

Contact +91-080-40473500 or visit us at [www.alpinehousing.com](http://www.alpinehousing.com)