



THE NEW HEIGHT OF SPLENDOUR !

Platinum Towers



Our Team

R. C. C. Structure :
Arun Gokhale & Associates

Architect :
MnC Architects

Legal Advisor :
Advt Sheetal Bansode & Asso.



Office Address:
Platinum Keys, Aditya Business Center,
Office 6A & 6B 2nd floor,
A Wing, Next to Jyoti Restaurant,
Kondhwa, Pune - 411 048.
Phone: +91 92262 56000
email id: platinumkeys99@gmail.com

Site address:
Platinum Towers, S. No. 34, Yewlewadi,
Kamthe Patil Nagar, Kondhwa, Pune - 48.
Phone: +91 99222 82399 / 99222 81599
email id: platinumkeys99@gmail.com



MAHARERA NO.: P52100053201



RPM/MAH/NR521000888

NOTE : The plans, Specifications, amenities, numbers of flats, numbers of units, numbers of floors, area, images, & photographs, in the brochure are only indicative & are subject to change without any prior notice. The rights of certain changes are reserved by the developers.

Design: Mob.No.: +91 93705 28625

LET THE WORLD LOOK UP TO YOU...!



THE NEW HEIGHT OF SPLENDOUR !

Platinum Towers

A PROJECT BY:
PLATINUM KEY & ENA INFRASTRUCTURE



Crafting Landmarks, Creating Benchmarks

***The passion to excel,
The dynamism to lead,
And the vision to create value!***

This inspiring ideology has been the growth driver for us at Platinum Key Developers and Ena Infrastructure for over 30 years.

Starting our journey as building contractors, we soon ventured into real estate development. Our premium properties, aggregating 3 lac square feet, are located at handpicked locations across Pune. 50+ landmark projects and over 500 happy families stand testimony to our commitment to excellence and focus on client satisfaction.

As we pride on our rich three-decade legacy, we also embrace modern practices, both on-site as well as in our design and engineering processes.

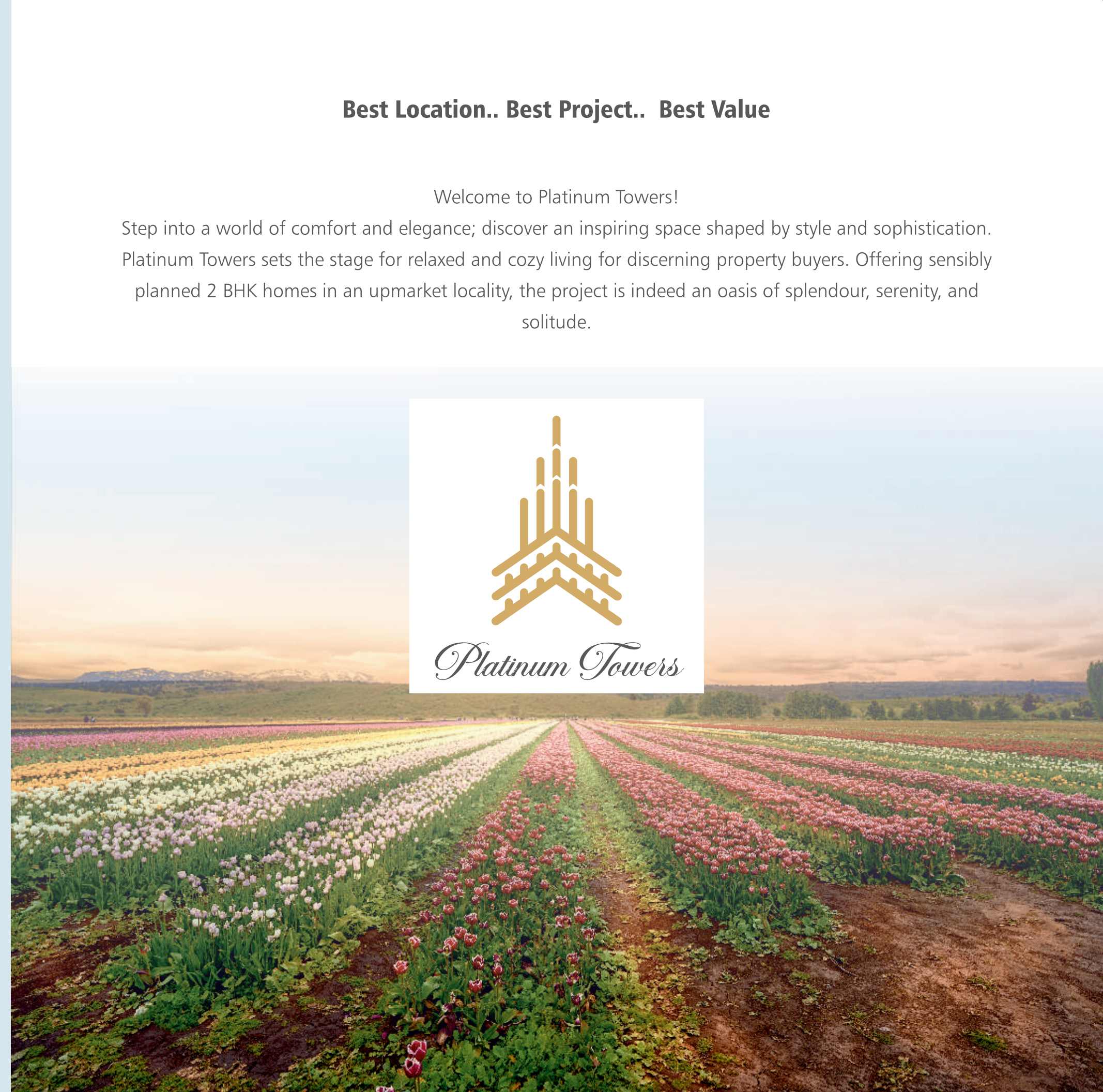
Our leadership team, which is a mix of veteran businessmen and 3rd generation young entrepreneurs, works tirelessly to turn the home of your cherished dreams into an exciting reality.



Best Location.. Best Project.. Best Value

Welcome to Platinum Towers!

Step into a world of comfort and elegance; discover an inspiring space shaped by style and sophistication. Platinum Towers sets the stage for relaxed and cozy living for discerning property buyers. Offering sensibly planned 2 BHK homes in an upmarket locality, the project is indeed an oasis of splendour, serenity, and solitude.



One of Kondhwa's Tallest Towers

Feel the Pride; Experience the Elation

There is more to it at Platinum Towers than the stunning views from the remarkable rooftop!

Rising gracefully over the landscape in Yevlewadi, Platinum Towers is the outcome of in-depth planning, distinctive design, superior craftsmanship, and quality construction.

Experience the feel of ample space in your home where you benefit from maximum usable area. Thoughtful ventilation, marked by East-West orientation of the apartments, ensures every home gets ample natural light and air.



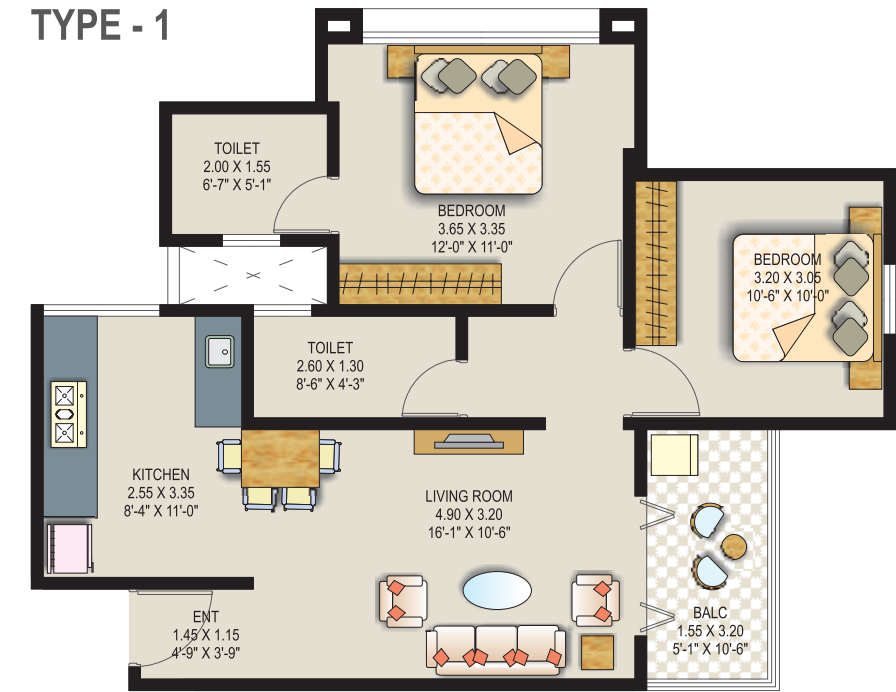
2 BHK

Luxurious Apartments

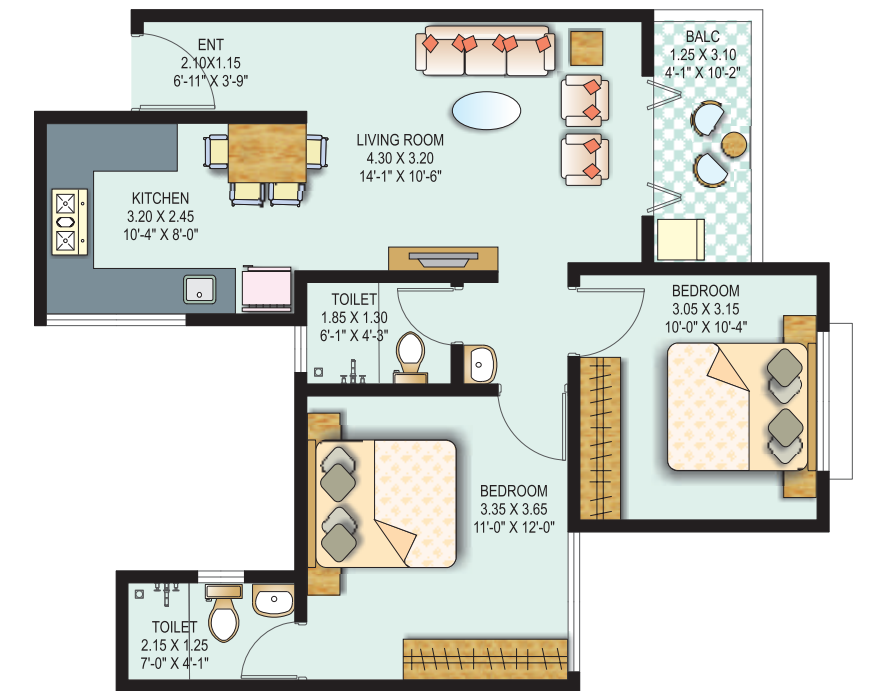


- A** Entrance Door
- B** Living Room
- C** Kitchen
- D** Master Bed Room 1
- E** Bed Room 2
- F** Balcony
- G** WC / Bath

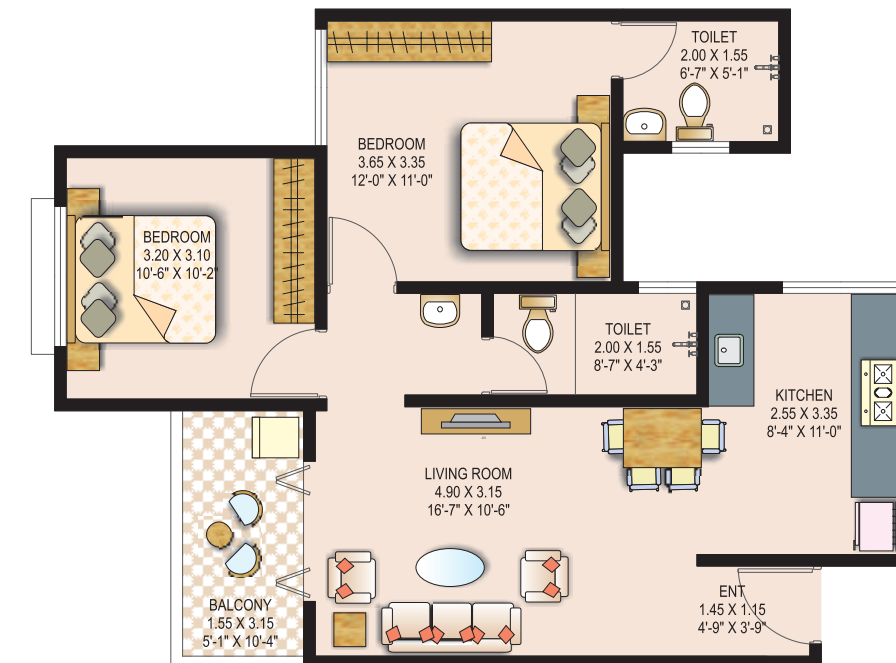
TYPE - 1



TYPE - 2

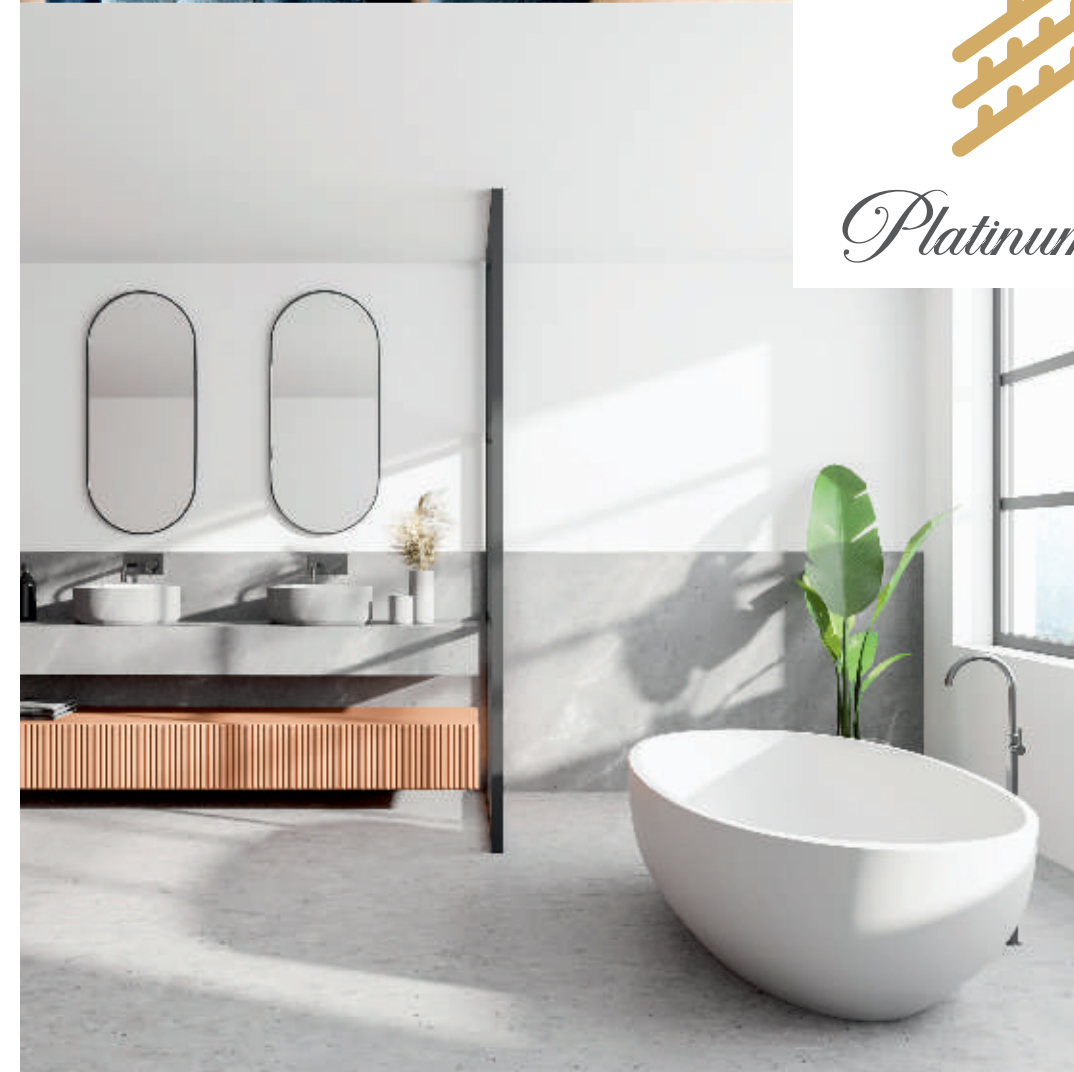
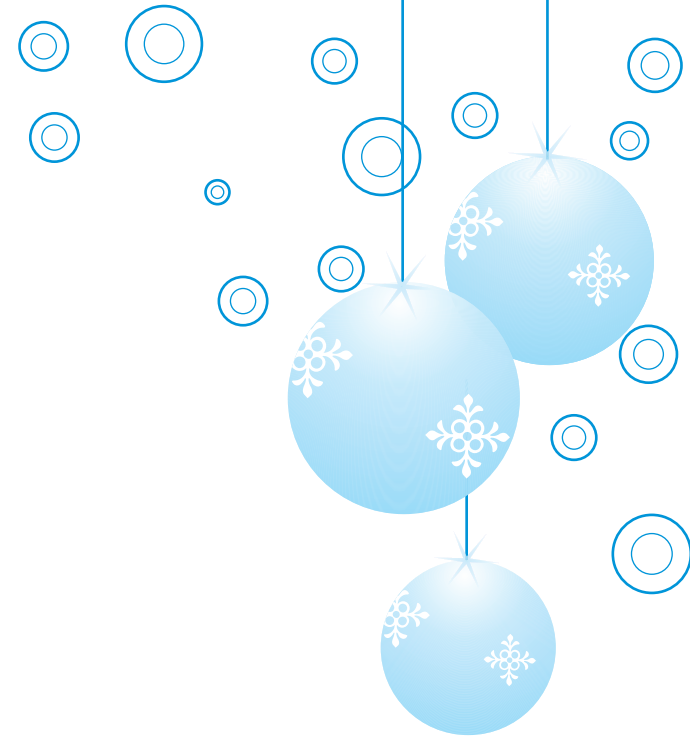


TYPE - 3



Amenities

- Designer Main Gate.
- Sit-outs for Senior Citizens.
- Decorative Entrance Lobby
- Fire Fighting Systems
- Solar Water Heating Systems in Flats
- CCTV for Society Security
- AC Points in all Flats
- 2 Automatic Elevators in each Wing.
- Anti Termite Treatment
- Internal Concrete Roads
- Earthquake Resistant Building
- Ample Two Wheeler & Four Wheeler Parking
- Generator Backup for Lift & Common Areas
- 24X7 Security
- Swimming Pool
- State-of-the-art Club House
- Children's Play Area
- Garden
- Jogging Track
- Main Door Security Camera





Specifications

STRUCTURE : Earthquake resistant R.C.C. frame structure

BATHROOM : Premium brand designer bathroom & fixtures ■ Anti-skid Tile flooring for all toilets
■ Designer dado title in toilets ■ Exhaust fan connection in bathroom

FLOORING : Vitrified floor Tiling in all rooms, kitchen and common passage Living room 2 Ft x 4Ft
Master Bedroom Wooden finish

PLASTER & PAINTING INTERNAL FINISHES : Internal gypsum plaster ■ Superior quality paints

EXTERNAL FINISHES : Double coat sand face Plaster ■ High quality Paint

DOOR FRAMES & SHUTTERS : Luxurious Main Door with security Door Camera

■ Internal Flush Doors With Attractive Door- Skin ■ Designer Door fittings and locks



WINDOWS : Powder Coated Sliding window with Mosquito net ■ Marble/ Granite window
frame with safety MS grill

KITCHEN : Artificial Marble / Granite platform with Modular Kitchen ■ Ceramic / Glazed tiles
above Kitchen Platform ■ S. S. Sink Drain Board ■ Connection for Water Purifier ■ Hot & Cold
Water Connection

ELECTRIFICATION & PLUMBING : Concealed Copper wiring ■ Modular Switches ■ Point for
cable TV in Living & Bed room ■ Concealed anti – corrosive plumbing ■ Power-backup for
common amenities ■ Point for inverter – back up for light and fan points ■ Solar hot water
■ AC Point in all bedrooms



THE NEW HEIGHT OF SPLENDOR !

Platinum Towers

Key Project Features

- Elite gated community
- Well-planned, spacious 2 BHK apartments
- Club House and Rooftop with Modern Lifestyle Amenities
- Vibrant community living experience
- Excellent connectivity to all areas in South Pune

Club House with Gym & Swimming Pool





Your Gateway to Rapid Business Growth

Platinum Towers also offers spacious shops/showrooms suited for a variety of enterprises. Owing to the project's strategic location, your store will indeed benefit from heavy footfalls and a good inflow of walk-in customers. Whether you sell grocery or stationery, Platinum Towers is the right destination for success in business.

Key Highlights

- Commercial Plaza with separate entrance
- Ideal for various retail businesses
- Ample parking for shoppers and visitors
- Double-heighted shops with good frontage
- Excellent visibility



Superb Location; Superior Connectivity

When you live at Platinum Towers, you are away from the chaos of the city yet live close to everyday conveniences.

The cosmopolitan locality of Yevlewadi puts you within quick reach of prestigious schools, malls, hospitals, and banking services. Pune's acclaimed spiritual destinations too are a quick drive away.

This emerging locality is also a happening hotspot, where fine dine restaurants, leisure clubs, and swanky multiplexes are located close by. Moreover, you also benefit from easy access to the Mumbai-Pune Expressway and Pune-Bangalore Highway.

SCHOOL / INSTITUTE

Vidya - Ship Public School
 Sinhagad School
 Sinhagad Institute
 of Arts, Science & Commerce
 MSB Institute
 Trinity Institute
 Sinhagad Academy of
 Engineering

HOSPITALS

Satyanand Hospital
 Bharti Vidhyapeth Hospital
 Noble Hospital
 Ruby Hospital
 Arogya GNTL Gyno Clinic

RESTAURANTS

Angraj Dhaba
 Kanha Veg.
 Gokul Veg.

BANKS & ATM

HDFC Bank
 ICICI Bank

SPIRITUAL PLACES

ISCON Mandir
 Jain Mandir
 Jama Masjid
 Kalimi Masjid
 Good Shepard Church
 Guru Dwara

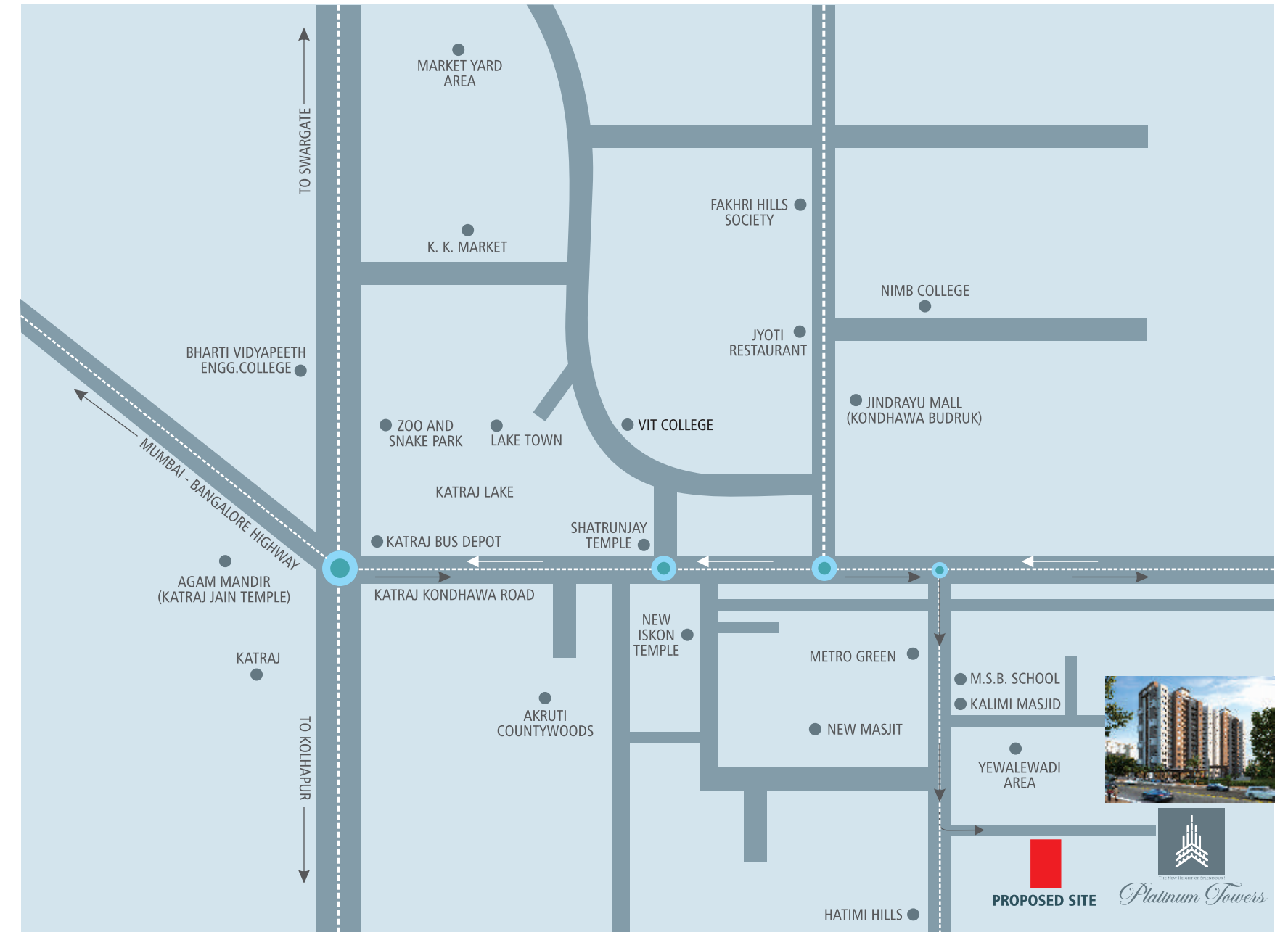
MALLS

D - Mart
 Vijay Sales
 KBC Mall

CONNECTIVITY

Airport	18 Km
Hadapsar	14 Km
Pune Station	12 Km
Mumbai Solapur Highway	10 Km
Swargate	08 Km
M. G. Road, Camp	08 Km
NIBM Road	07 Km
Market Yard	06 Km
Mumbai Bangalore Expressway	04 Km

LOCATION PLAN



This brochure is purely conceptual and not a legal offering. PLATINUM KEYS & ENA reserves the right to add, delete or alter any details and/or specifications in its endeavor to make improvements as and when required. The images, layouts and maps presented in this brochure are for indicative purposes only. They may not be to scale.

All other trademarks are the property of their respective owners. All rights reserved. No part of this brochure may be reproduced, stored in a retrieval system, or transmitted, in any means, electronic, mechanical, photocopying, recording, or otherwise, without the prior permission of PLATINUM KEYS & ENA

All the information in the detailed floor plans section are indicative & not to scale. The actual elevation may vary from the artist's impression depicted. The furniture and fixtures with images shown in the brochure do not form part of actual unit. All plans are subject to accommodate the changes required as per the sanctioning authorities.

All amenities and specifications are as per availabilities and discretion of the developer, Nature and locations of all amenities and proposed development shown in the proposed master plan can be added, omitted or shifted as per the developer's discretion.

