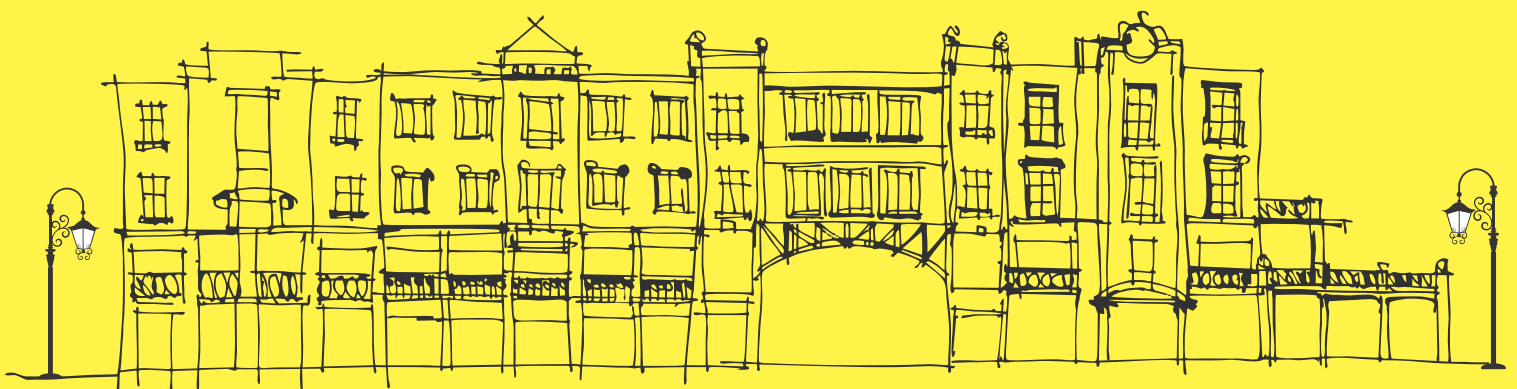




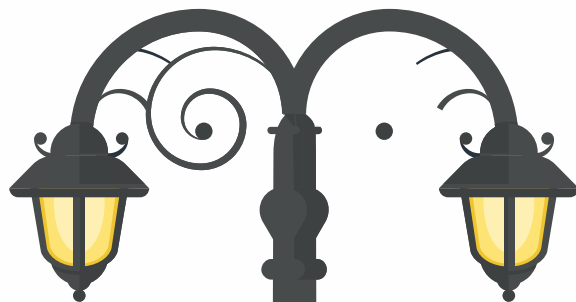
**Many Aspirations.
One Destination.**



Hinjawadi

Destination for a thriving *Business*

- Rapid developments across 2900+ Acres
 - Upcoming Pune Metro - Line 3
 - Proposed Ring Road in the Proximity
- New Connecting roads to many prime suburbs of Pune





Blessed with many advantages

Every business depends on multiple factors for success. To help you make the right start and ensure that your business evolves consistently, Destination Hinjawadi offers a number of unique advantages that promise to act like a strong foundation.



High Density neighbourhood with 15,000+ homes

With a diverse number of cosmopolitan inhabitants residing within 3 km radius such as Godrej 24, Godrej Elements, Ashok Meadows, Blue Ridge, Destination Hinjawadi will be a preferred marketplace, thereby ensuring maximum footfalls throughout the year.



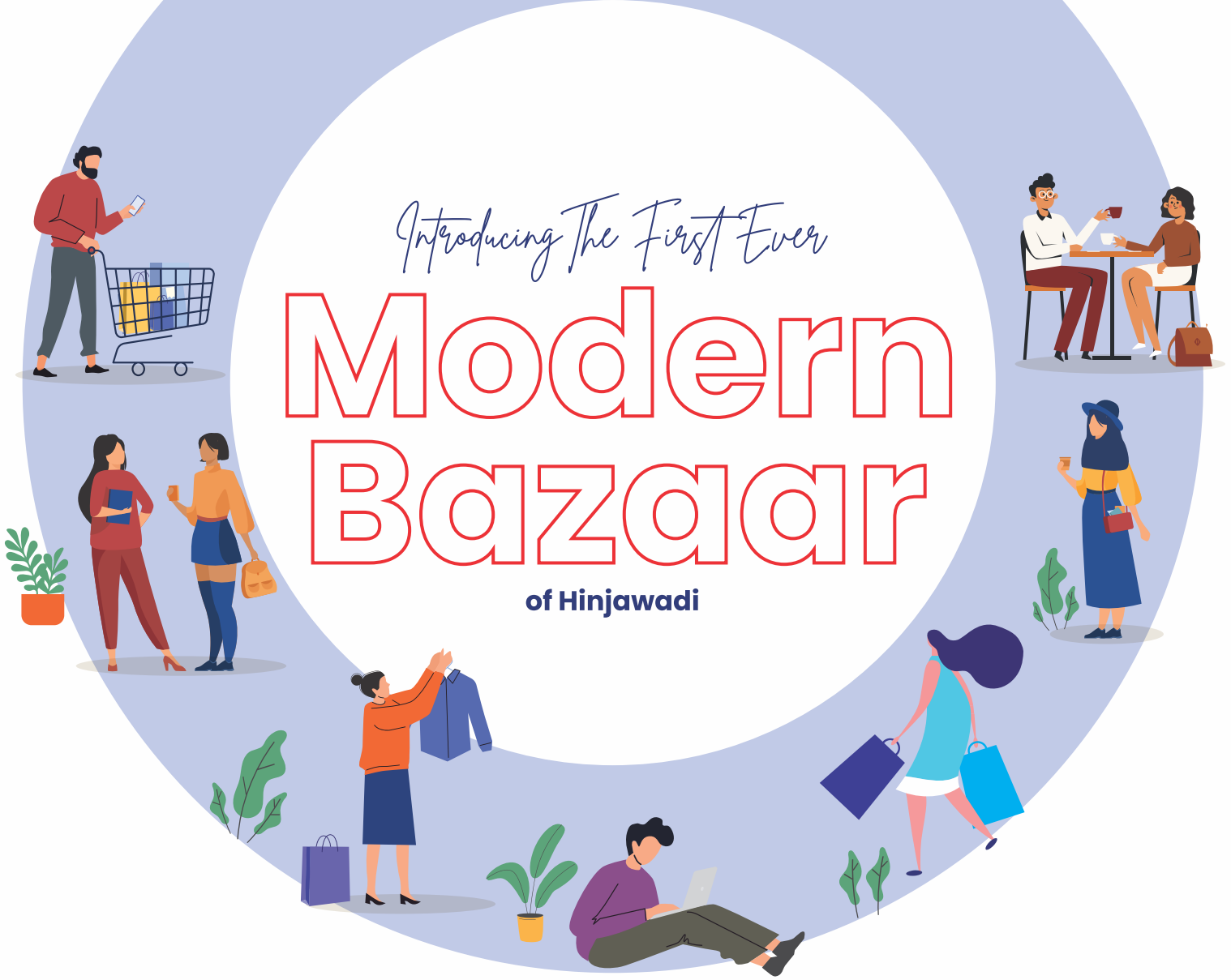
A preferred marketplace for 6 lakh+ employees

Serve the diverse needs and desires of the large workforce employed at leading companies, Wipro, Infosys, TCS, L&T, Cognizant, Accenture etc. With easy access and exceptional experience, Destination Hinjawadi would always be on top of the employees' minds.



Need for an organized retail market

Despite the unprecedented growth, Hinjawadi's retail market has been largely unorganized and scattered. Destination Hinjawadi is all set to fill the void by being the first-ever Modern Bazaar of this suburb.



Redefining the Experience

A bazaar that serves the purpose of everyone. From the ambitious business owner to the salon seeker. The well-planned layout elevates the overall experience by ensuring a seamless access across the centre thereby ensuring a hassle-free outing. A thorough network of pathways makes connectivity easier.

If you own a business, expect a steady influx of customers without the usual overcrowding. With a motley of businesses at one place and highlights like visibility, wide alternatives and convenience, it's all set to be a thriving modern bazaar.

All-in-one shopping centre | Hassle-free entry and exit points
Thoughtful services & halt zones | Street shopping experience
Lively ambience | Natural Lighting



Destination Hinjawadi

Built

for every business *Aspiration*



Every business is different, every goal is unique.
Whether you are a startup, a chef or an established brand, make it big with Destination Hinjawadi.



No matter what the size of the business, Destination Hinjawadi is a hub of opportunities. Be it a salon or retail store, here's a chance for you to thrive.



Ensure a seamless experience for your customers with a modern-day commercial centre. Be it a healthcare professional or a gym, every dream can soar higher.



Through attractively priced spaces, variety of shop sizes and a host of advantages, Destination Hinjawadi becomes a lucrative option for everyone. Here, every business aspiration can see the light of the day.



Tap the unlimited potential of this ever-growing suburb.

Own your space at Destination Hinjawadi.

Let your business

Shine

with

Destination Hinjawadi

Some commercial creations go beyond the obvious. Their beauty inspires us but at the same time the functionality leaves us spell bound. They are modern not only in terms of looks but also design. Inventive in every way, these structures cater to the needs of the businessowners as well as the visitors. As time and ease become crucial factors, a seamless experience for all the stakeholders becomes a given.

Welcome to the contemporary commercial centre built for businesses who aspire to tap the unlimited potential of this ever-growing suburb.



What makes a

Market Place *Great*

A great marketplace is not just about great architecture but a fusion of diverse aspects. It's a perfect mix of tradition and modernity. It is designed by keeping in mind the desires of the owners as well as visitors.



Sociability

A marketplace that is inviting, a place that is convenient yet diverse. Here's offering a world-class experience for visitors.

Limitless Activities

This place is the perfect hotspot to relax after a tiring week or to celebrate special occasions, any given day.

Super Access

With a convenient and easy access to every possible store/shop, your customers would love to visit you again and again.

Ease Redefined

For any visitor, safety, hygiene and other customer-centric features are always going to be of prime importance.



Destination Hinjawadi

Perfect

in every way



Multiple choice of spaces with high visibility



Multiple entry-exit points and ample parking space



Customized spaces to suit every aspiration



Bridges for seamless internal connectivity



Convenience for business owners & visitors as well



Essentials to entertainment, everything under one roof

and many more applause-worthy advantages

European architecture.

Indian *Soul*

Inspired by the European street market, Destination Hinjawadi is all set to hog the limelight. Infused by the best of features, customers will aspire to visit it again and again.



Sightlines

Meander through the market and cherish the surprises and thrills on display enabled by great visibility.



Lighting

A centre designed to gain maximum natural light within. Discover a pleasing play of lights and colours. A treat for every eye.



Pedestrian pathways

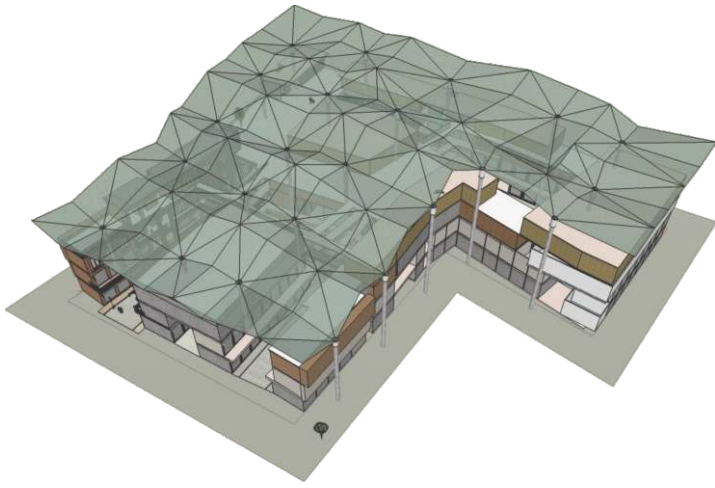
A thoughtfully designed network of pathways and bridges for convenient & easy movement.



Timeless, old-world charm

Wide open spaces that let you take a walk and explore the shops on the way. Vibrant street experience, Lively ambience & an evergreen design that will stand out for a lifetime.



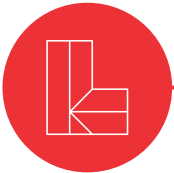


A roof engineered to

Harness

Nature

At Destination Hinjawadi, the architectural beauty is complemented by the sustainable features. The flowing roof optimizes the natural light and air besides protecting the building from rain.



Natural Ventilation

Ideal for Indian climate, low on maintenance and highly cost efficient.



Protection

The roof protects the structure from extreme weather conditions (Rain, Dust, etc.)



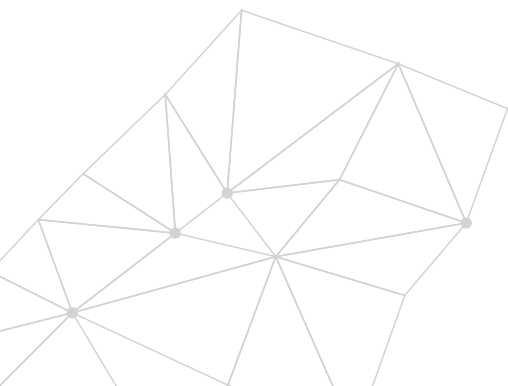
Low Maintenance

The roof reduces the overall maintenance cost as the low temperature prevents the need for an AC



Heat Reduction

The adequate space below the roof ensures that the hot air is let out, thus creating a pleasing atmosphere.





Spaces *Priceless*

that makes your investment

Space, size and location, all factors come together to make your decision easier.

Daily Essentials | Retail & Boutique Spaces | Food Court/QSRs
Multipurpose Customized Spaces | Spaces for Professional Services
Restaurants | Co-Working Spaces | Entertainment

Daily Essentials

Laundry, Vegetables, Bakery, Dairy Products, Livestock, Fruits, Flowers, Pooja essentials and many more

Retail Spaces

General Store, Supermarket, Sweets, Clothing, Saloon, Electrical & electronic appliances, Mobile shopee, Pharmacy, Liquor shop, Sports shop, Florists, Cosmetics & novelty store, Ice cream café, Gift shop, Cake shop, Footwear shop, Stationery and book store, Xerox, Pet shop, Baby needs, Jewellery Shops, Hardware & spare parts

Spaces for Professionals

Consultants, Doctors / Health Clinics, Chartered Accountants, Company Secretaries, Lawyers / Legal Firms, Dieticians, Numerologists, Media companies, Architects & Interior Designers, Opticians & Eye care clinics, Mechanics, Photo studio, Appliance service center, Real estate agency, Tattoo Studio, Courier Services

Food Court / QSRs

Coffee Shop, Juice bar & Ice creme Center, Amrutulya, Bhel & Chat Center, Pavbhaji, Dabeli, Snacks Center

Multipurpose Customized Spaces

Fitness Clubs, Beauty Salons, Coaching Classes, Dance Academy, Zumba Classes, Yoga Center, Banquet Hall, Offices, ATM, Banking & Finance, Insurance, Travel & Tourism, Co-working Brands, Advertising & Media Agency

Layout

that works *Well*

Architectural layout, thoughtfully designed to cater to every need and convenience aspect of a marketplace.

This layout features many highlights.

- Ample open space to hangout
- Large food court space
- Thoughtfully designed layout
- Multiple entry & exit points
- Ample sunlight & air ventilation
- Amazing street shopping experience



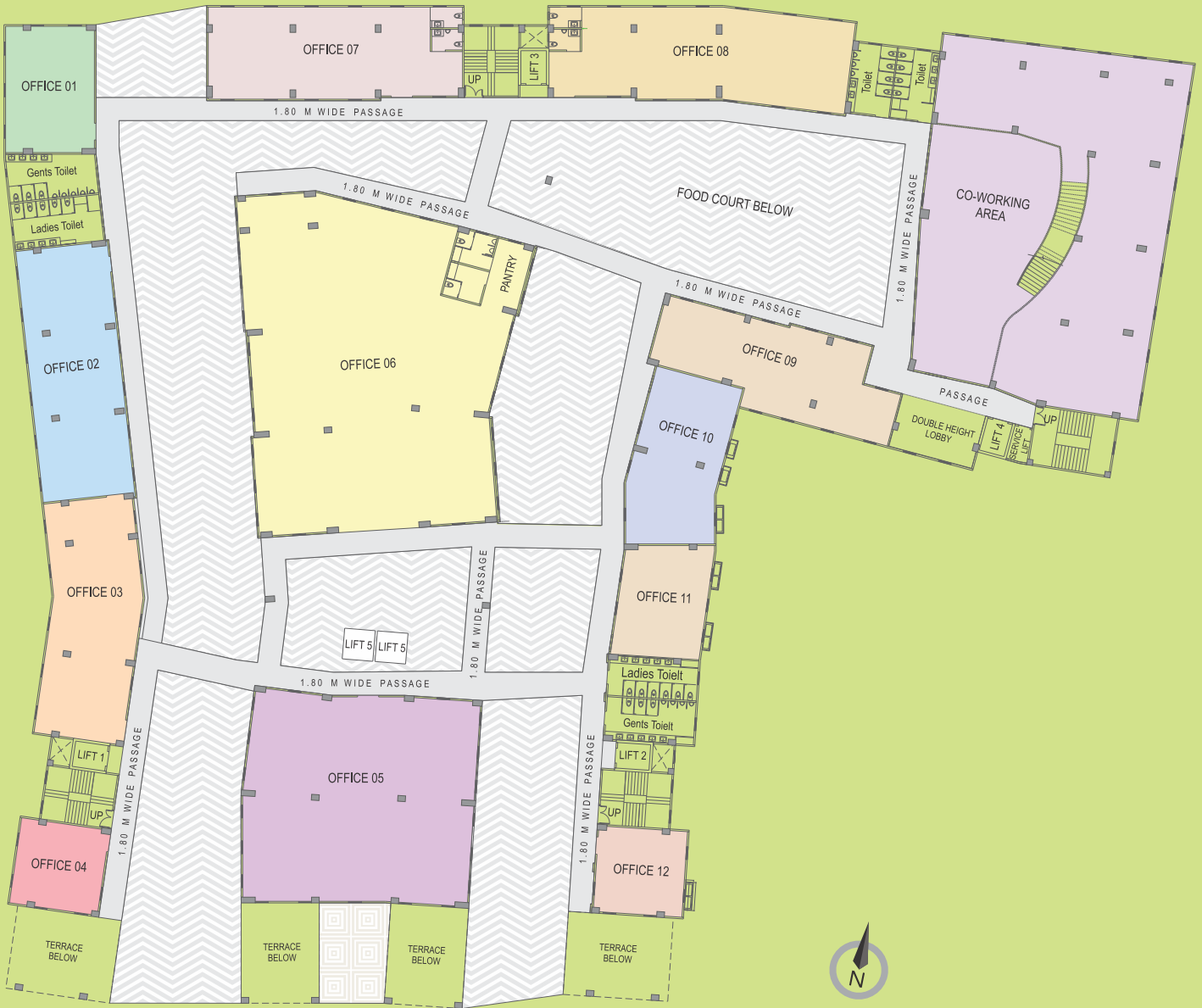
Ground Floor Plan



First Floor Plan



Second Floor Plan



Third Floor Plan



Destination Hijawadi

HIGH ROI

Higher Growth

At Destination Hinjawadi, a number of factors ensure good returns right from the word go.



Premium commercial space within your reach

With **central connectivity & high density population**, Destination Hinjawadi promises a **higher scope of appreciation**.



Smart-sized area. Large-sized profits

Enjoy the unique advantage of choosing a space with a lower ticket size. Get maximum profits per area owned.



Maximum Footfalls

With everything under one roof, the commercial space will see a constant inflow of visitors, thereby benefitting every business.

Invest in a promising future

Invest in

Destination Hinjawadi



Be a part of Hinjawadi's growth story

The Infotech Park has led to the transformation of not just Hinjawadi but also nearby suburbs across the Western corridor. In the years to come, this suburb will further grow and open new door of possibilities for businesses.

A solid infrastructure all set to be bolstered by the proposed Ring Road and Pune Metro (Line 3), Hinjawadi will be a preferred suburb for many. Add to this the exceptional connectivity to prime suburbs and prominent highways. In a nutshell, this suburb is on the cusp of a new growth phase.

Exceptional price appreciation potential

Given the phenomenal growth over almost 2 decades, Hinjawadi has delivered phenomenal returns to those who put money on it. With expansion in the pipeline, Hinjawadi will continue to thrive and reward investors and businesses alike.

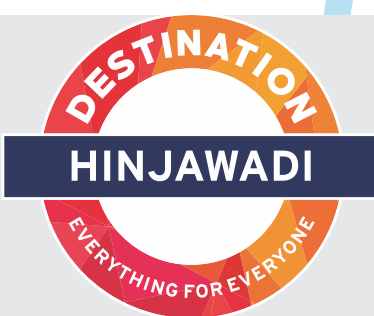
Why Hinjawadi is the best bet in Pune?

- ✔ Untapped organized Retail space
- ✔ Connectivity to Pune's prime suburbs
- ✔ Upcoming Pune Metro
- ✔ One of India's biggest IT Parks of 2900+ acres
- ✔ Proposed Ring Road in proximity
- ✔ Connected to Pune-Mumbai Expressway
- ✔ Preferred locality for IT companies & residences
- ✔ New connecting roads opening up

Location Map



Highlights



Centrally located between high residential catchment

Godrej 24 & Godrej Elements

Infosys, Wipro and Persistent

Easy connectivity from Phase 1 to Phase 3

New road from Phase 1 to Mahalunge

SITE ADDRESS

Next to Godrej 24, Maan Road, Rajiv Gandhi Infotech Park,
Hinjewadi Phase 1, Pune-411057.

 **+91 988 104 4646**

 **destinationretail@gmail.com**

 MAHARERA REG. NO. P52100017252

A Project By

Smp[®]

Creating Energetic Spaces