



GODREJ  **ATHENA**
—
INDIRANAGAR-HAL





GODREJ ATHENA
गोदरेज अथेना

Artist's impression. Not an actual site photograph.



INTRODUCING

GODREJ  ATHENA

HOME IS YOUR PALACE

A rich heritage inspired by the greatest minds of the century. A legacy so grand that it is a portal that transports you to the glorious lives of kings and queens. Here's introducing you to the Greco-Roman way of life, a life that has been curated keeping all your regal needs in mind. Each and every amenity in your new home has been crafted to ensure you lead a life of luxury and comfort. A life fit for aristocracy, a life where home is your palace.





STAY CONNECTED IN A HOME WITH THE WORLD AROUND YOU.



SCHOOLS AND COLLEGES 20 MIN DRIVE-TIME*

Orchids The International School	190 m, 1 min*
Shishya BEML Public School	1 km, 4 min*
Global City International School	1.4 km, 6 min*
National Public School	3 km, 7 min*
Fusco's School	3 km, 8 min*
SSB International School	3.5 km, 12 min*
KMJ College of Nursing	4.2 km, 12 min*
Bishop Cotton School	8.6 km, 20 min*



RECREATIONAL AVENUES 20 MIN DRIVE-TIME*

Gopalan Signature Mall	3 km, 10 min*
Bob's Bar	3.5 km, 10 min*
TOIT	4.5 km, 12 min*
The Leela Palace Bengaluru	4.1 km, 14 min*
Gilly's	5 km, 16 min *
1 MG - Lido Mall	6.8 km, 18 min *
Phoenix Market City	7 km, 20 min *
Garuda Mall	8 km, 20 min *





TRANSIT CONNECTIVITY 20 MIN DRIVE-TIME*

HAL	1.4 km, 4 min*
Old Madras Road	3.4 km, 9 min*
Intermediate Ring Road	4.4 km, 13 min*
Swamy Vivekananda Metro Station	4.1 km, 15 min*
Indiranagar Metro Station	4.8 km, 18 min*
Marathahalli	5.8 km, 20 min*



HEALTH CARE INSTITUTIONS 20 MIN DRIVE-TIME*

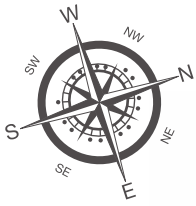
BEML Hospital	550 m, 2 min*
Lifepus Hospital	2.6 km, 7 min*
Motherhood Hospital	3.9 km, 12 min*
Revive Hospital	4.1 km, 12 min*
Manipal Hospital	3.8 km, 13 min*
Sakra World Hospital	8.8 km, 20 min*





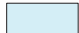


A MAP OF YOUR PALACE AND ITS SURROUNDINGS.





MASTER LAYOUT PLAN.

-  2 BHK
-  3 BHK
-  3 BHK LUXE



TYOLOGY PLAN

MASTER PLAN AMENITIES

1	Entry Portal	11	Amphitheatre	21	Kids' Play Area
2	Skateboarding Park	12	Waterbody	22	Yoga Deck
3	Tree Court	13	Cascade	23	Senior Citizen Zone
4	Calisthenics Court	14	Classical Themed Court	24	Themed Tree Court
5	Community Garden	15	Pergola With Seating	25	Tennis Court
6	Kids' Play Area	16	Stepped Seating	26	Walking / Jogging Track
7	Tic Tac Toe Court	17	Waterbody	27	UG Sump In Basement
8	Entry Plaza	18	Feature Wall With Water Spout	28	STP in Basement
9	Obelisk	19	Pet Park	29	Services
10	Waterbody With Frothy Fountain	20	Multipurpose Court		

CLUBHOUSE (CIVIC AMENITIES)

30	Temperature Controlled Swimming Pool
31	Paddle Pool
32	Poolside Pergola
33	Private Party Deck



GRECO-ROMAN ARCHITECTURE.

Regal Architecture

Architecture that has been designed to give you the best of the royal experience.

Spacious Design

Space is a luxury you deserve to enjoy and this philosophy has been imbibed into our design.

Grand Balconies

Balconies that not only deliver spectacular views, but are a spectacle within itself.





Artist's impression. Not an actual site photograph.



CLUBHOUSE.

Sauna & Steam Room

A sauna and steam room to help you relax like never before.

Temperature Controlled Swimming Pool

A swimming pool which makes sure the temperature is just right to deliver a relaxing swim.



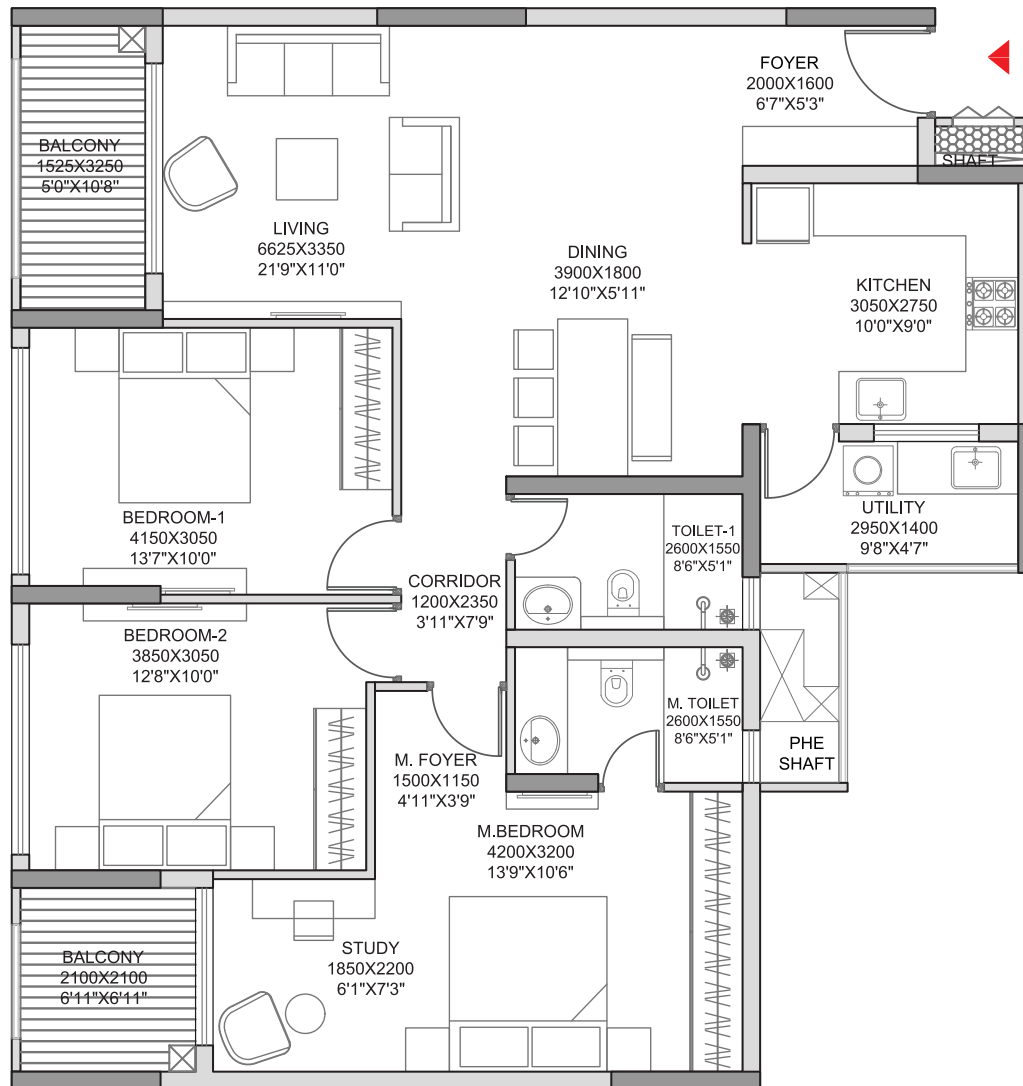


Artist's impression. Not an actual site photograph.



AMENITIES THAT LET YOU LIVE THE LIFE YOU WANT TO.





3 BHK FLOOR PLAN

RERA CARPET AREA - 102.52 SQ.MTS. (1103.53 SQ.FT.)

BALCONY AREA - 9.43 SQ.MTS. (101.50 SQ.FT.)

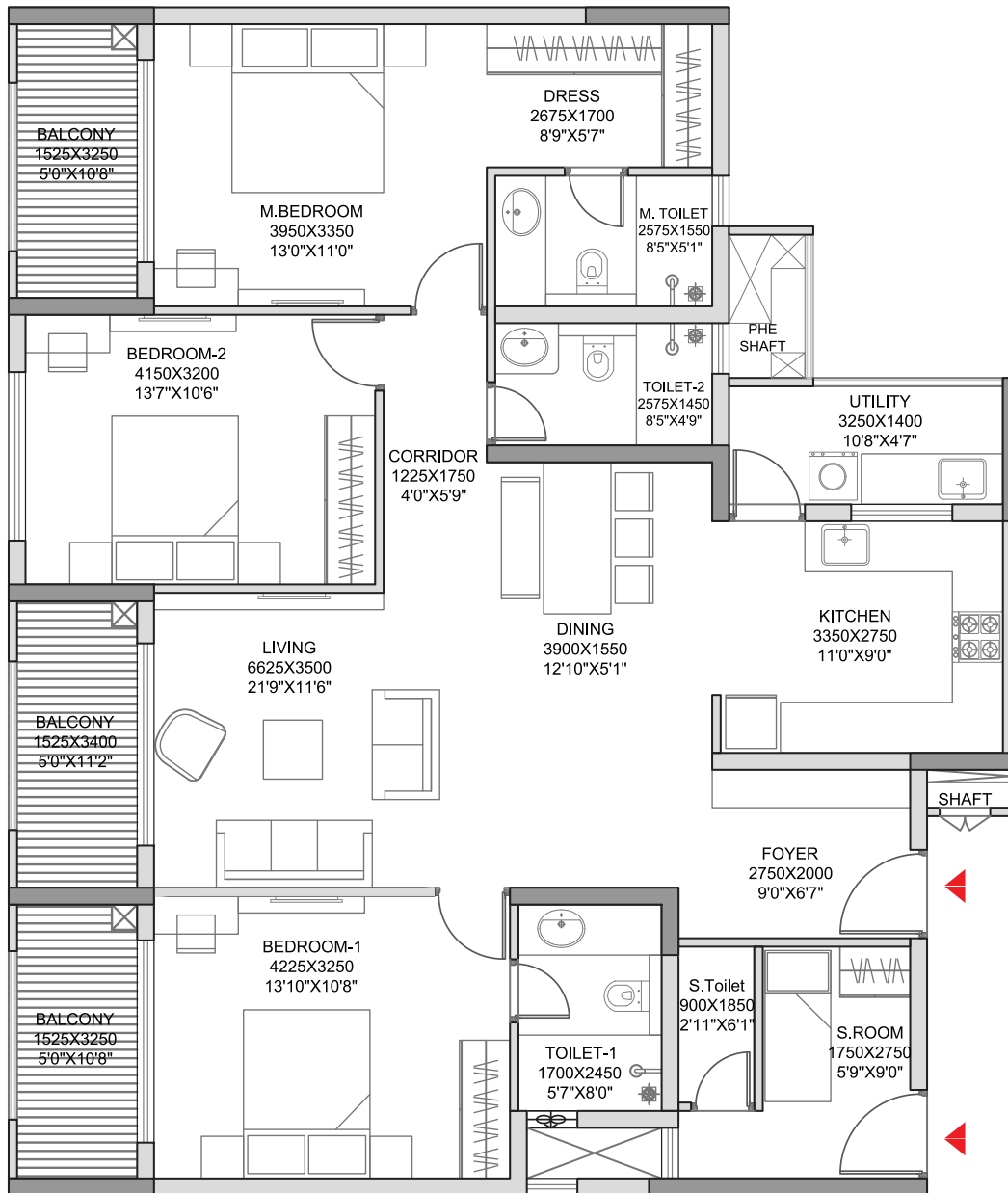
UTILITY AREA - 4.05 SQ.MTS. (43.59 SQ.FT.)

SALEABLE AREA - 158.92 SQ.MTS. (1710.6 SQ.FT.)

NOTE :

1. ALL DIMENSIONS MENTIONED ARE FROM UNFINISHED WALL TO UNFINISHED WALL (EXCLUDING LEDGE WALL AREA)
2. CARPET AREA IS CALCULATED FROM THE UNFINISHED WALL
3. CARPET AREA INCLUDES LEDGE WALLS
4. BALCONY AREA AND DIMENSIONS INCLUDE THE UP-STANDS
5. DRAWINGS ARE NOT TO SCALE.
6. DEVELOPER RESERVES THE RIGHT TO ADD OR REMOVE AND CHANGE LOCATION OF ANY AMENITIES/SPECIFICATIONS AT THEIR OWN DISCRETION.

1 SQ.M. = 10.7639 SQ.FT.



3 BHK LUXE FLOOR PLAN

RERA CARPET AREA	- 119.71 SQ.MTS. (1288.55 SQ.FT.)
BALCONY AREA	- 14.85 SQ.MTS. (159.85 SQ.FT.)
UTILITY AREA	- 4.46 SQ.MTS. (48.10 SQ.FT.)
SALEABLE AREA	- 190.46 SQ.MTS.(2050.06 SQ.FT.)

NOTE :

1. ALL DIMENSIONS MENTIONED ARE FROM UNFINISHED WALL TO UNFINISHED WALL (EXCLUDING LEDGE WALL AREA)
2. CARPET AREA IS CALCULATED FROM THE UNFINISHED WALL
3. CARPET AREA INCLUDES LEDGE WALLS
4. BALCONY AREA AND DIMENSIONS INCLUDE THE UP-STANDS
5. DRAWINGS ARE NOT TO SCALE.
6. DEVELOPER RESERVES THE RIGHT TO ADD OR REMOVE AND CHANGE LOCATION OF ANY AMENITIES/SPECIFICATIONS AT THEIR OWN DISCRETION.

1 SQ.M. = 10.7639 SQ.FT.



Artist's impression. Not an actual site photograph.



RERA No. PRM/KA/RERA/1251/446/PR/090123/005605, available at website: <http://rera.karnataka.gov.in>.

Site address: Godrej Athena, Khata No.28 in Survey No. 124, 7th Cross- Nelluru Puram, Kaggadasapura, Bangalore, Bengaluru East, Bengaluru Urban, Karnataka - 560093.

The project is registered as Godrej Athena.

The images contain artist impression. No warranty is expressly or impliedly given that the completed development will comply in any degree with such artist's impression as depicted. The furniture, accessories, paintings, plantations, landscaping, items, electronic goods, additional fittings/fixtures, decorative items, false ceiling including finishing materials, specifications, shades, sizes and colour of the tiles, etc. shown in the image are only indicative in nature and are only for the purpose of illustrating/indicating a conceived layout and do not form part of the standard specifications/amenities/services to be provided in the unit and/or the Project. The Sale is subject to terms of Application Form and Agreement for Sale. All specifications of the unit shall be as per the final agreement between the Parties. Recipients are advised to apprise themselves of the necessary and relevant information of the project prior to making any purchase decisions. The official website of Godrej Properties Ltd. Is www.godrejproperties.com. Please do not rely on the information provided on any other website. *T&C Apply.