



RESIDENCES AT

# 37C

GURGAON

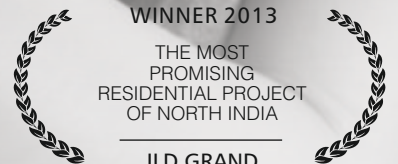
PENTHOUSES,  
DUPLEXES  
AND  
3 BHK  
RESIDENCES



WINNER 2010

THE BEST HIGH RISE  
ARCHITECTURE BY ASIA PACIFIC  
RESIDENTIAL PROPERTY  
AWARDS

ILD GREENS



WINNER 2013

THE MOST  
PROMISING  
RESIDENTIAL PROJECT  
OF NORTH INDIA

ILD GRAND





*Convenience of  
Sector 37C*

6354321

## WHY SECTOR 37C

EXCELLENT CONNECTIVITY FROM  
**NH8, DWARKA EXPRESSWAY**  
AND **INTERNATIONAL AIRPORT (T3)**

IN CLOSE PROXIMITY TO  
**UPCOMING METRO STATION**  
ON DWARKA EXPRESSWAY

IN THE VICINITY OF SCHOOLS,  
HOSPITALS & UPCOMING  
**COMMERCIAL HUB OF SECTOR 88**

**APPROVED RESIDENTIAL SECTOR**  
UNDER MCG; ENTITLED FOR ALL  
GOVERNMENT & MUNICIPAL FACILITIES

**MINUTES AWAY FROM OLD GURGAON**  
(SADAR BAZAR/RAILWAY STATION)

**IN CLOSE PROXIMITY TO ALREADY**  
INHABITED SECTORS LIKE 4, 5, 7, 9 10,  
PATAUDI ROAD & NEW GURGAON  
(SECTOR 82-95)

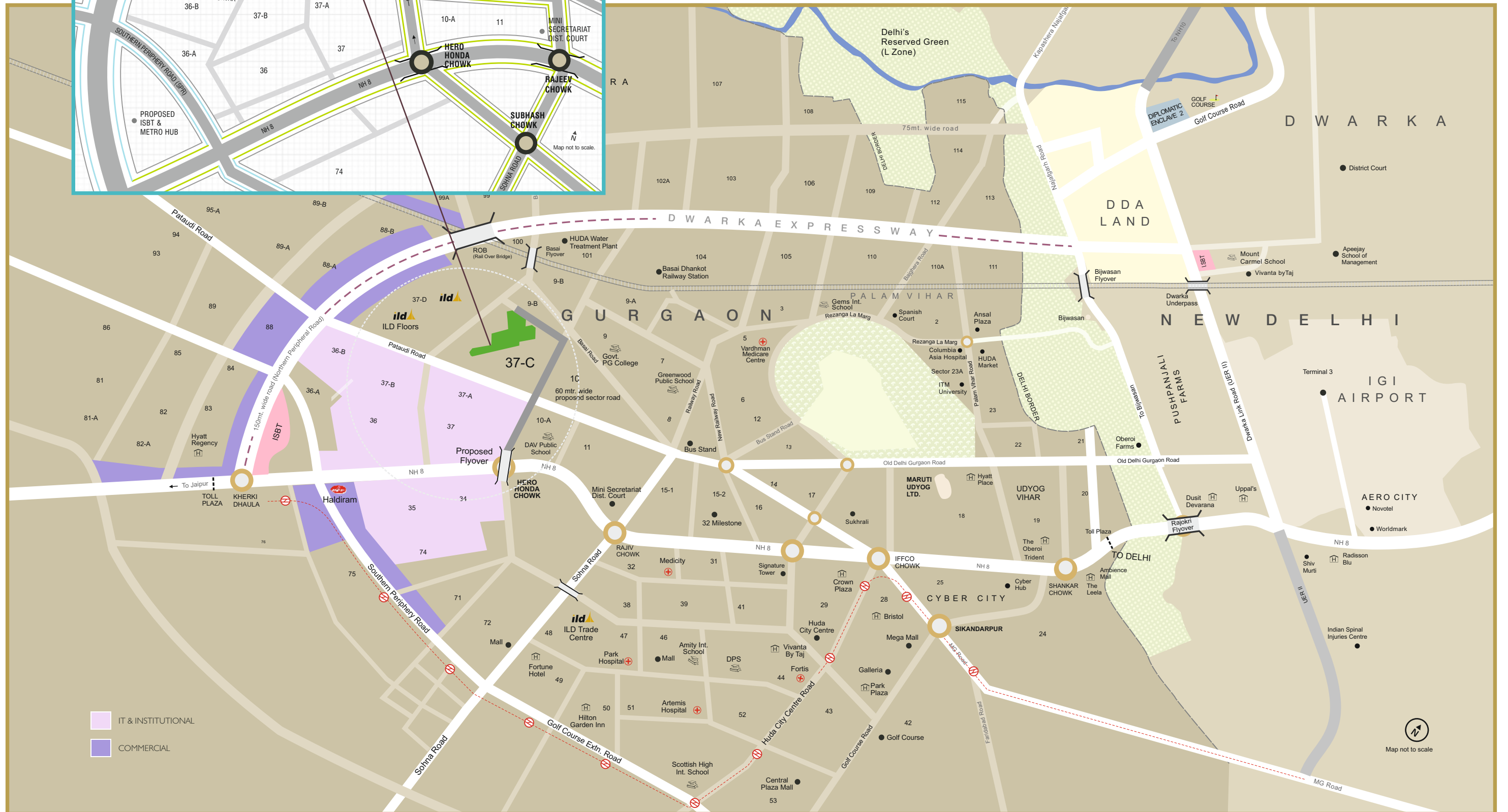
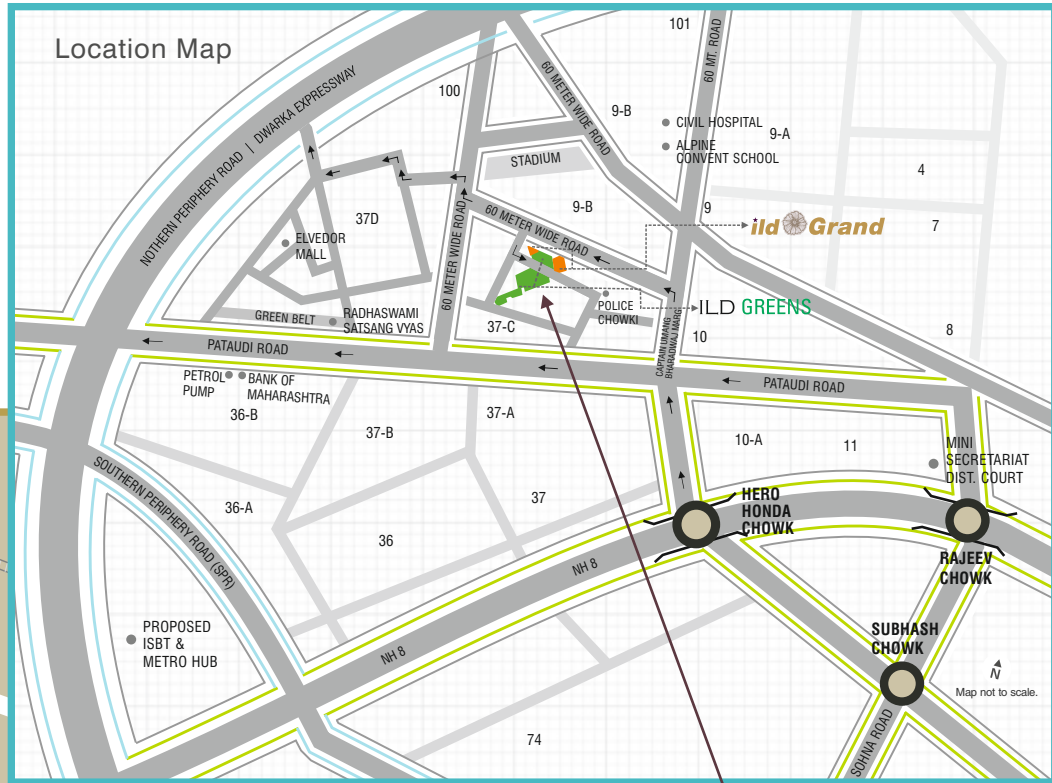


Artistic Impression





# LOCATION MAP SECTOR 37C





RESIDENCES AT  
**37C**  
 GURGAON  
 SITE PLAN





# 22 ACRE OF AN AWARD WINNING GRAND GREEN LIFESTYLE



---

SELECT PENTHOUSES, DUPLEXES  
AND 3 BHK RESIDENCES



# AMENITIES TO MAKE YOUR LIVING ACTIVE

3 Swimming Pools

2 Club Houses

2 Tennis Courts

2 Basket Ball Courts

Jogging Tracks

Convenience Stores

2 Schools (1 Primary & 1 Nursery)

Amphitheatre

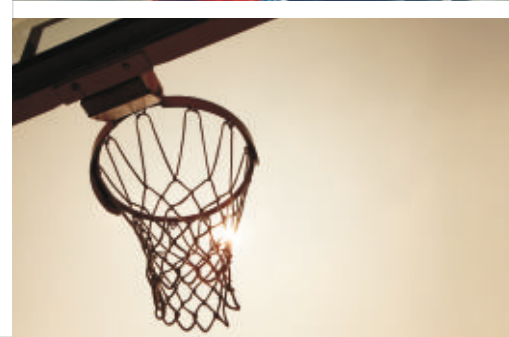
3 Yoga Zones

Multiple Kid's Play Areas

2 Sky Terraces

Series of Thematic Gardens

Eco-Friendly Development







EXTRAORDINAIRE  
3 BHK  
RESIDENCES

**ILD GRAND**

**PRINCIPAL ARCHITECT**

The Renowned  
Architect "ARCOP"

**RESIDENCES**

Three Side Open  
3 BHK Apartments

**SALEABLE AREA**

1790 sq.ft.  
1820 sq.ft.

**STATUS**

Nearing Possession

**PAYMENT PLAN**

Attractive Payment Plan Options

**SOLD OUT**

2 BHK Residences





Artistic Impression

## FEATURES: AS GRAND AS IT GETS

— **Spacious homes** with large windows & balconies

— **Open / Dual kitchen** (gourmet & asian)

— **Vaastu compliant homes**

— **State-of-the-art** interior specifications

— **24 x 7 power** back up & security

— **Provision for** wi-fi DTH connectivity

## STATUS

- NEARING POSSESSION
- DESIGNED AND CONCEPTUALIZED WITH MODERN AMENITIES.
- PERFECT FOR THE RESIDENTS TO MOVE IN SOON.



Actual Site Picture





EXTRAORDINAIRE  
VILLAS IN THE  
SKY

**ILD GREENS**

**PRINCIPAL ARCHITECT**

The Renowned Architect  
Design Forum International

**RESIDENCES**

Three Side Open  
Duplexes & Penthouses

**SALEABLE AREA**

2516-4068 sq.ft.

**STATUS**

Possession Commenced

**PAYMENT PLAN**

Attractive Payment Plan Options





Artistic Impression

**VILLAS**  
IN THE SKY  
LUXURY DUPLEXES  
AND PENTHOUSES

**Dedicated** open & covered parking slots

**Villas in the sky**  
(hi-rise duplex with terrace gardens)

**Open / Dual kitchen**  
(gourmet & asian)

**High quality** modern fixtures and fittings

**Provision** for wi-fi DTH connectivity

**All homes** linked to a central security system

## STATUS

- POSSESSION COMMENCED.
- TOWER 2 STRUCTURE READY.
- THE FINISHING OF THE TOWER IN PROGRESS.



Actual Site Picture





THE  
GRAND CENTRA  
LIFESTYLE OF  
GURGAON

GRAND  
CENTRA  
THE LUXURY RESIDENCES

**PRINCIPAL ARCHITECT**

The Renowned  
Architect "ARCOP"

**RESIDENCES**

Cosy 2 & 3 BHK Apartments

**SALEABLE AREA**

1300 sq.ft.  
1745 sq.ft.

**STATUS**

Commencing Soon

**PAYMENT PLAN**

Attractive Payment Plan Options

**RESIDENCES**

2 & 3 BHK Available





Artistic Impression

## RESIDENCES AS PERSONAL AS IT GETS

Fully Air conditioned living  
| dining room & bed room

Optimum space utilization

Open / Dual kitchen  
(gourmet & asian)

Vaastu compliant homes

Large french size windows  
for ample sunlight and  
serene views

Modular kitchen

Choice of garden facing  
& vibrant city skyline  
overlooking

State-of-the-art  
interior specifications

24 x 7 power  
back up & security

Provision for  
wi-fi DTH connectivity

High quality modern  
fixtures and fittings

## STATUS

- CONSTRUCTION COMMENCES
- DESIGNED AND CONCEPTUALIZED WITH MODERN AMENITIES.
- INSPIRED BY THE NEW AGE MODERN ARCHITECTURE
- PERFECT SPACE FOR GREEN AND MODERN LIVING



Artistic Impression

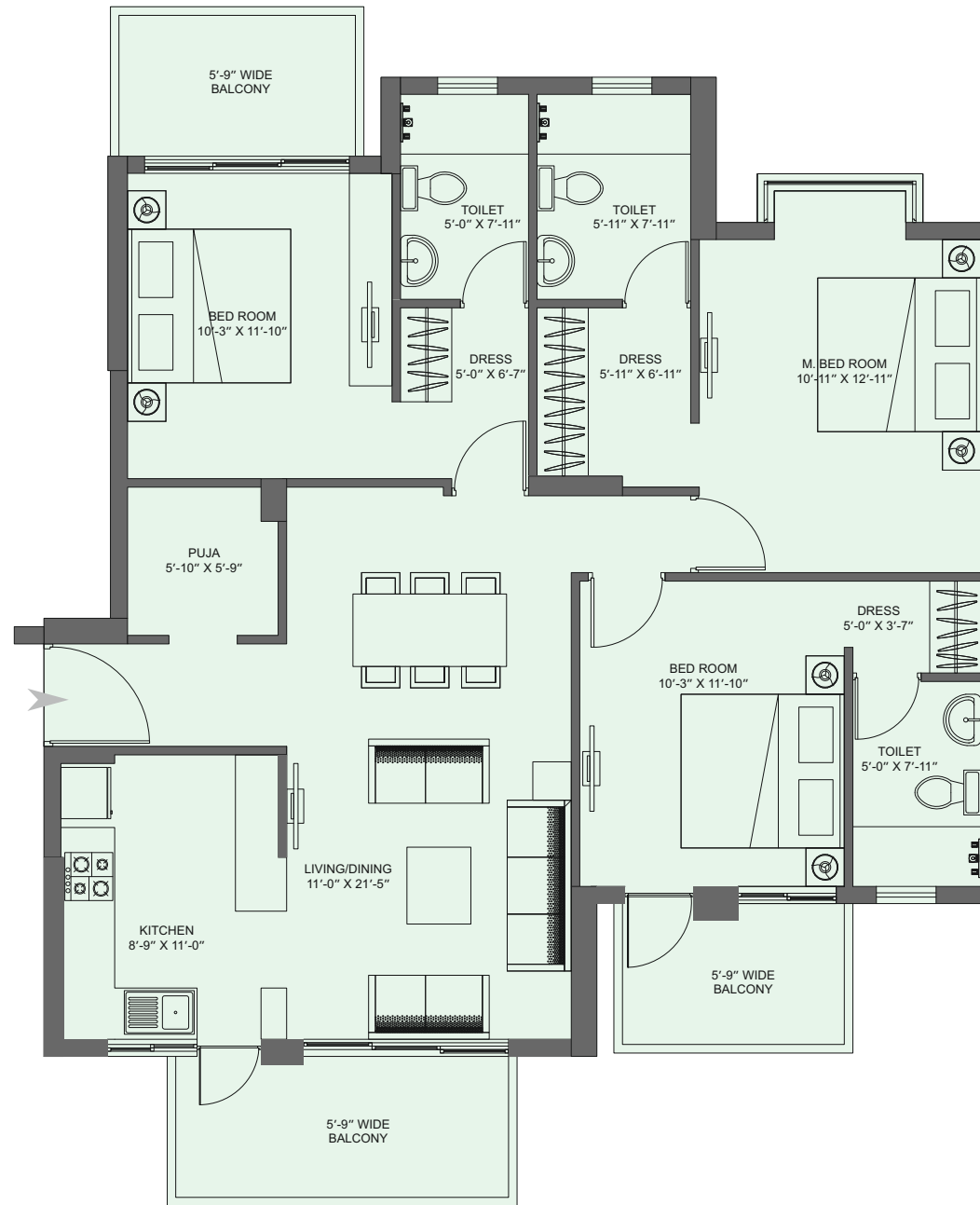


# ILD GRAND

## FLOOR PLAN-3BHK

Size - 1790 sq.ft.

SKYTREE / SKYLARK /  
PANORAMA / VISION

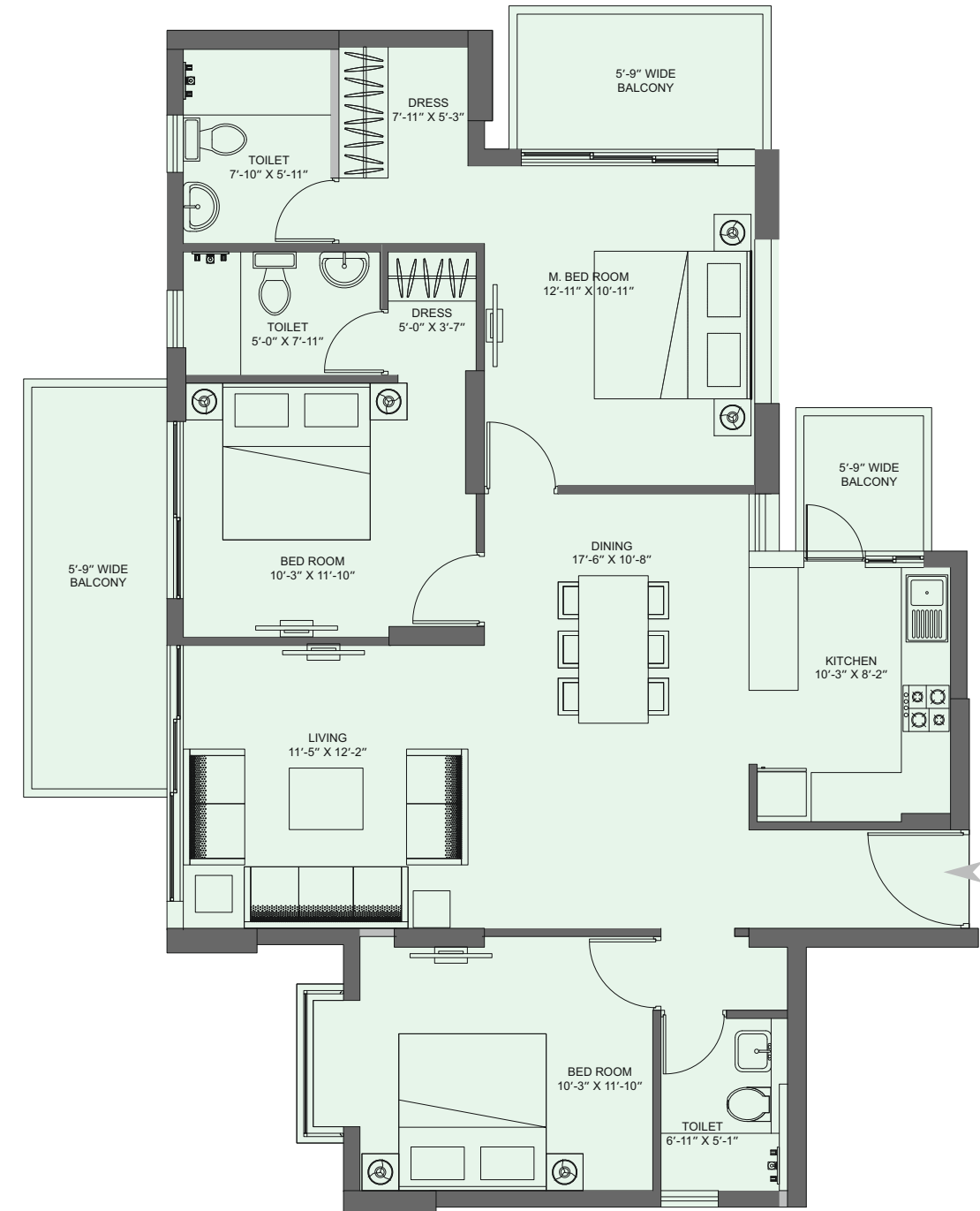


# ILD GRAND

## FLOOR PLAN-3BHK

Size - 1820 sq.ft.

SKYTREE / SKYLARK /  
PANORAMA / VISION



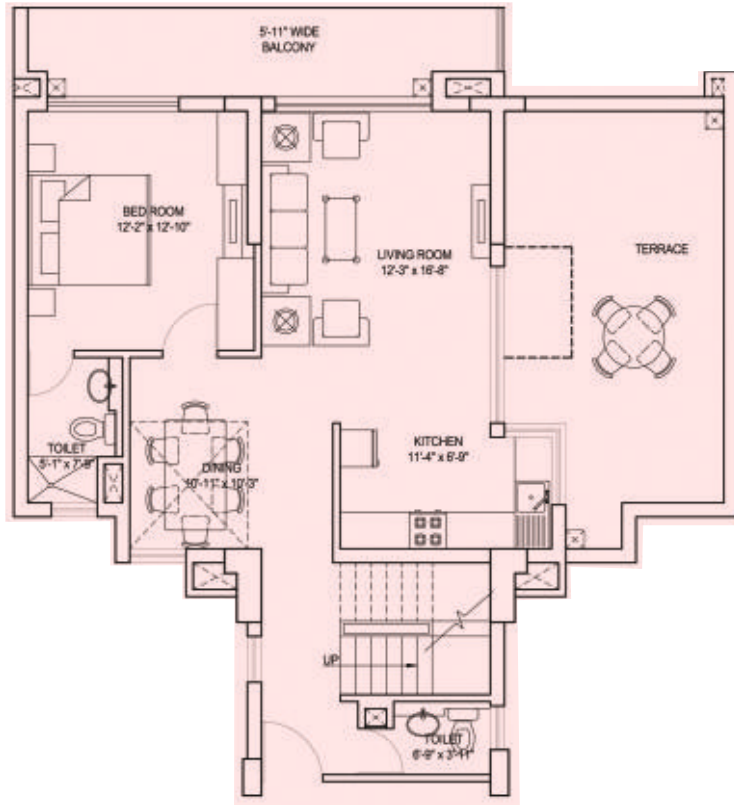


# ILD GREENS

## FLOOR PLAN DUPLEX APARTMENT

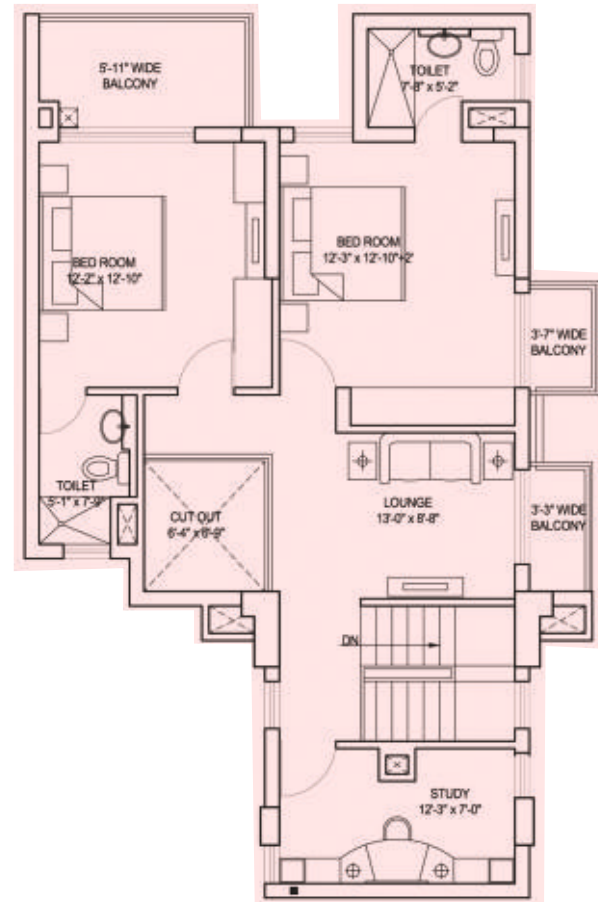
Size - 2752 sq.ft.

LOWER FLOOR



Size - 2752 sq.ft.

UPPER FLOOR

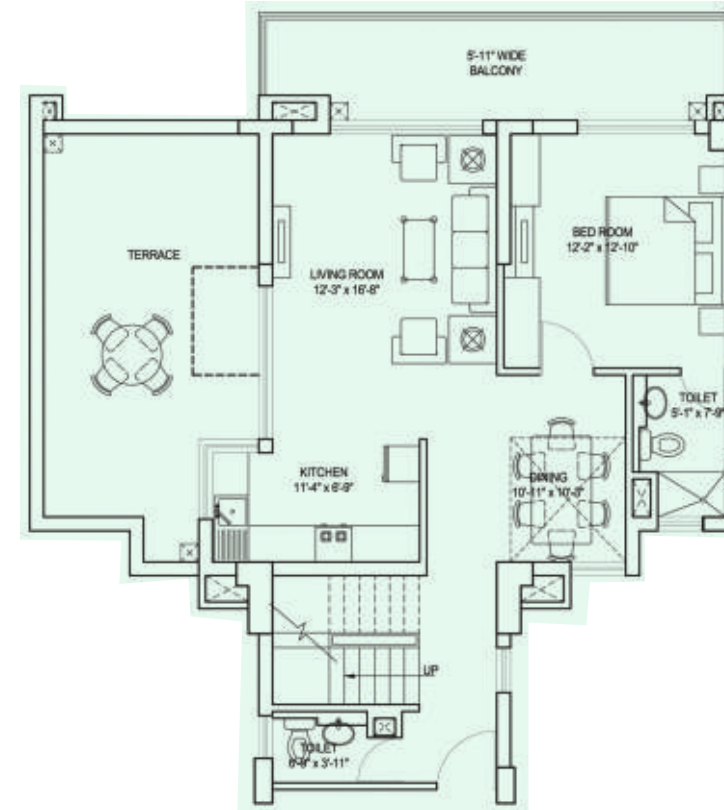


# ILD GREENS

## FLOOR PLAN DUPLEX APARTMENT

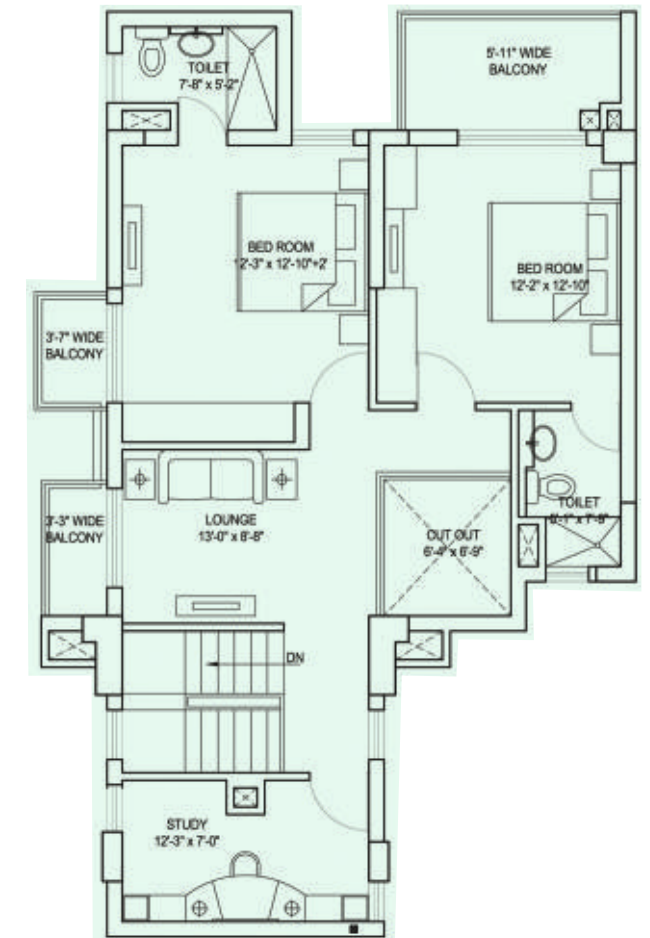
Size - 2782 sq.ft.

LOWER FLOOR



Size - 2782 sq.ft.

UPPER FLOOR



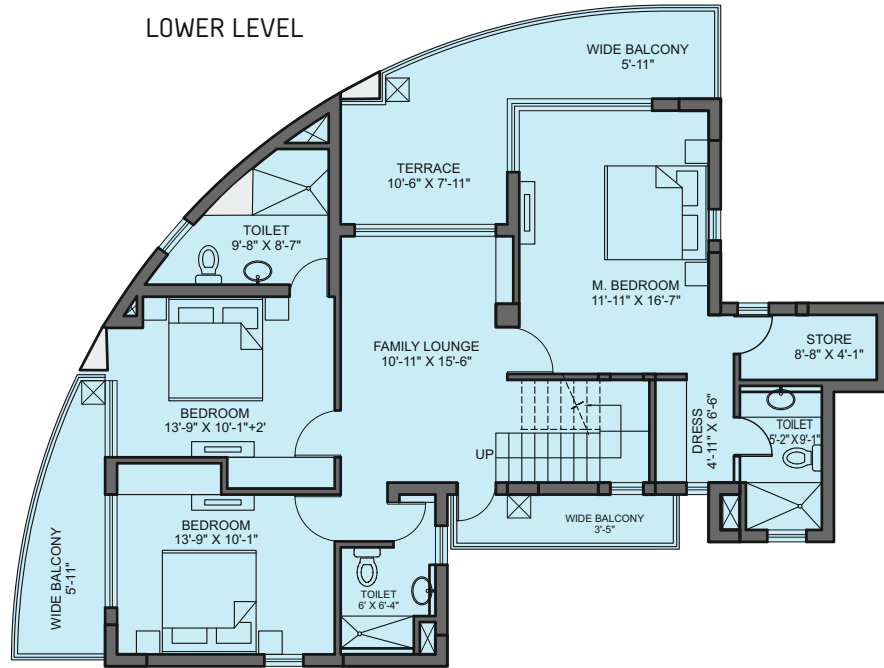


# ILD GREENS

## FLOOR PLAN PENTHOUSE

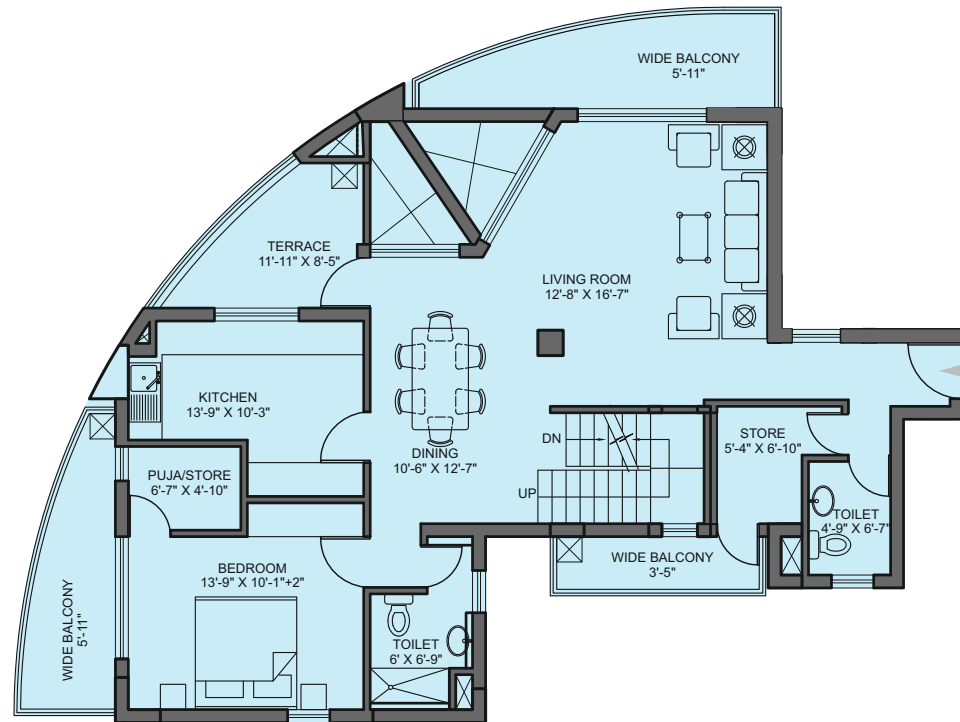
Size - 4068 sq.ft.

LOWER LEVEL

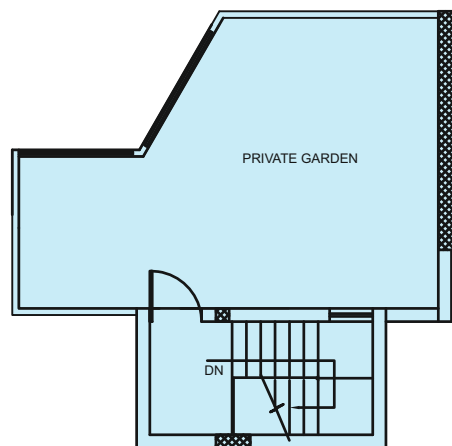


Size - 4068 sq.ft.

UPPER LEVEL



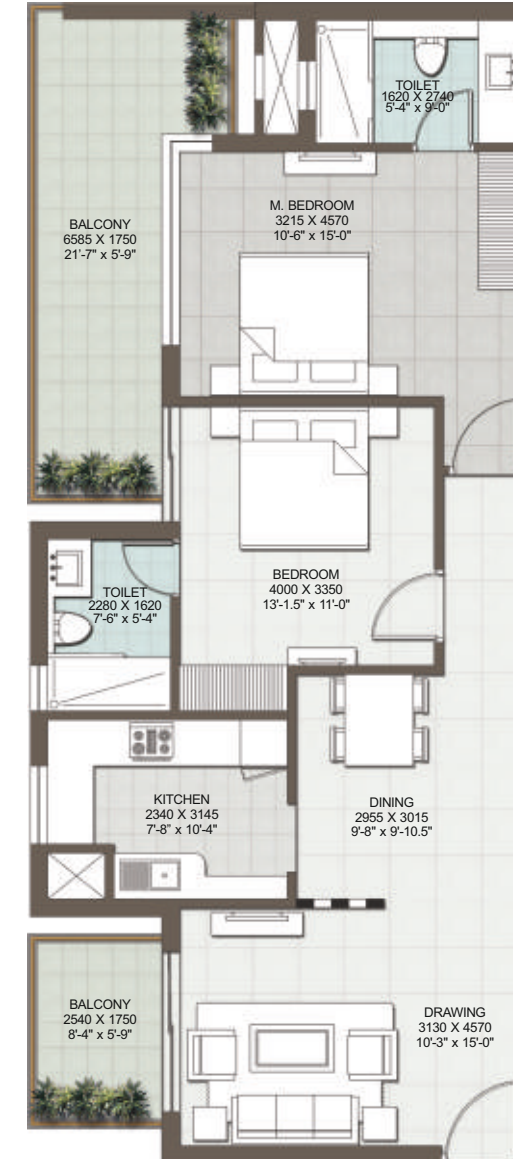
TERRACE LEVEL



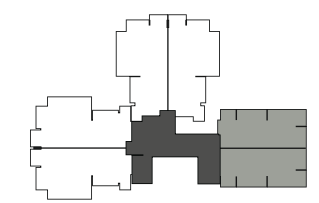
# GRAND CENTRA

## FLOOR PLAN 2 BHK APARTMENTS

Size - 1300 sq.ft.



ENTRY

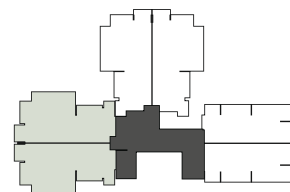




# GRAND CENTRA

## FLOOR PLAN 3 BHK APARTMENTS TYPE 1

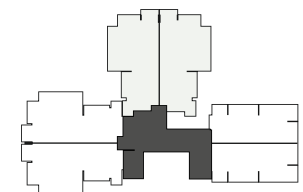
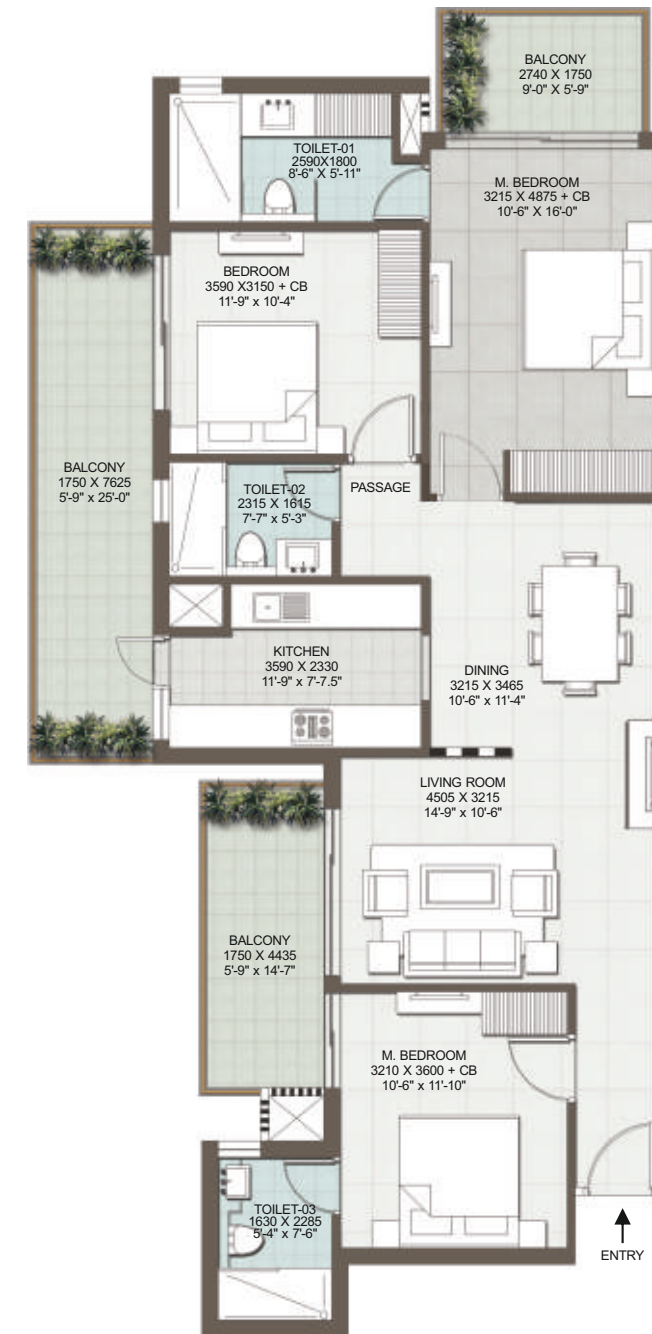
Size - 1745 sq.ft.



# GRAND CENTRA

## FLOOR PLAN 3 BHK APARTMENTS TYPE 2

Size - 1745 sq.ft.







## ILD IN NUMBERS

**1** MILLION  
SQ. FT.

Delivered

**4.5** MILLION  
SQ. FT.

Under Construction

**5** MILLION  
SQ. FT.

Upcoming

**200** ACRES  
INDUSTRIAL  
PLOTING

Delivered



DELIVERED  
**ILD TRADE CENTRE**  
Sohna Road, Gurgaon



Actual Image

UNDER CONSTRUCTION  
**ARETE**  
Sector 33, Sohna, South of Gurgaon



PRESENTING  
**INDEPENDENT FLOORS/PLOTS**  
Sector 37 D, Gurgaon



RECENTLY LAUNCHED GSR DRIVE BY ILD  
**25 ACRE**  
Sector 36, Sohna, South of Gurgaon







**INTERNATIONAL LAND DEVELOPERS**

ILD Trade Centre, Sector-47, Sohna Road, Gurgaon-122018  
T 99109 90001 | E [ild@ild.co.in](mailto:ild@ild.co.in) | VOIP 14.141.108.99 | W [www.ild.co.in](http://www.ild.co.in)

Follow us on     

Disclaimer: Greens: License Number Greens 13 of 2008 Area: 15.48 Acres and Building Plan ZP -370/AD (RA) /2014 Dated 16/6/2014. License Holder- Jubilant Malls Pvt. Ltd. The Greens Project has been mortgaged to "IL&FS Trust Company Limited". Grand: License Number Grand: License No. 96 of 2010 & 118 of 2011 Area: 5.69 Acres and Building Plan ZP-370 / JD (BS)/2012/12299 DATE 11/7/12. License Holder- Jubilant Malls Pvt. Ltd. The Grand Project has been mortgaged to "Corporation Bank". Images used in this document are artistic impressions. \*T & C apply.