



ABHEE SRISHTI LAYOUT

RERA NO : PRM/KA/RERA/1251/308/PR/080223/005701

YOUR LIFE IS NOW





Here at Srishti, you are always
in tune with the networks of
the outside world

These are premium plots that were designed to be perfect for a holistic life, where one would feel connected with nature, while also tuning in to the modern world that is just beyond the gates. Though it is close to the hubs of contemporary life, Srishti's design evokes a placid feeling; at once serene and calm, but if one should want, they can instantly connect to the rest of the world.

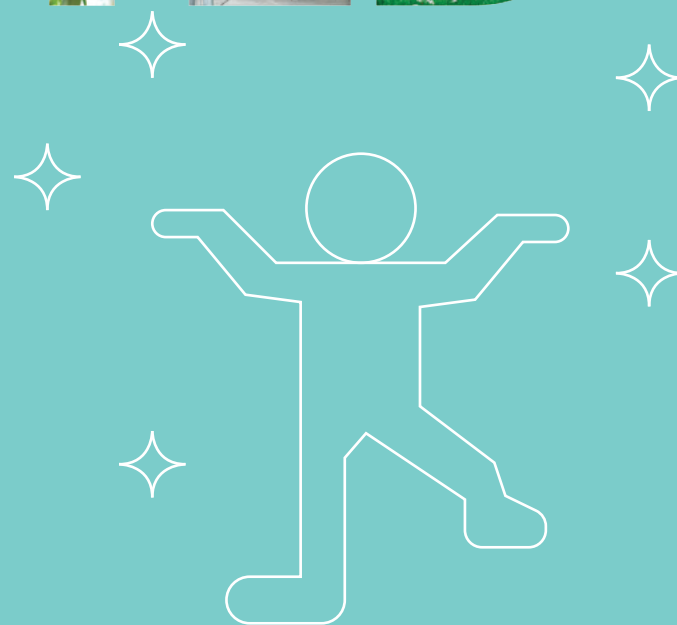


STAY



TO LEISURELY LIFE

As a space where your entire being feels connected with your environment, we have created an array of amenities that serve this purpose for everyone.



Multi-Purpose Court

A versatile area that can host a multiple variety of events and activities at any time of the day.



Grand Entry Plaza

This grand entry plaza sets the tone for the entire space with its magnificence.



Jogging Track

A smoothly paved track where one can jog without any distractions and be in their zone.



Stone Bench

Looking like as if it was spawned from the ground, these benches are a great resting spot for all.



Outdoor Gym

This area is designated for all those who want to sweat it out in the outdoors with other enthusiasts.

Meditation Deck

One can get lost in their inner mind and find their true selves as well as peace here while deep in meditation.

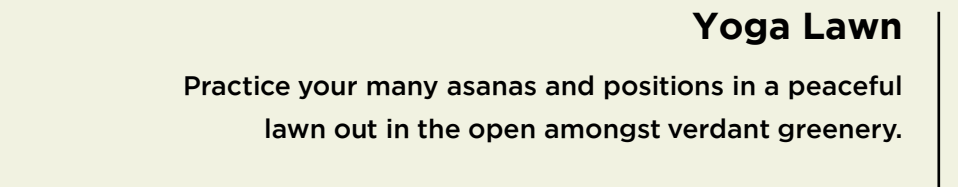
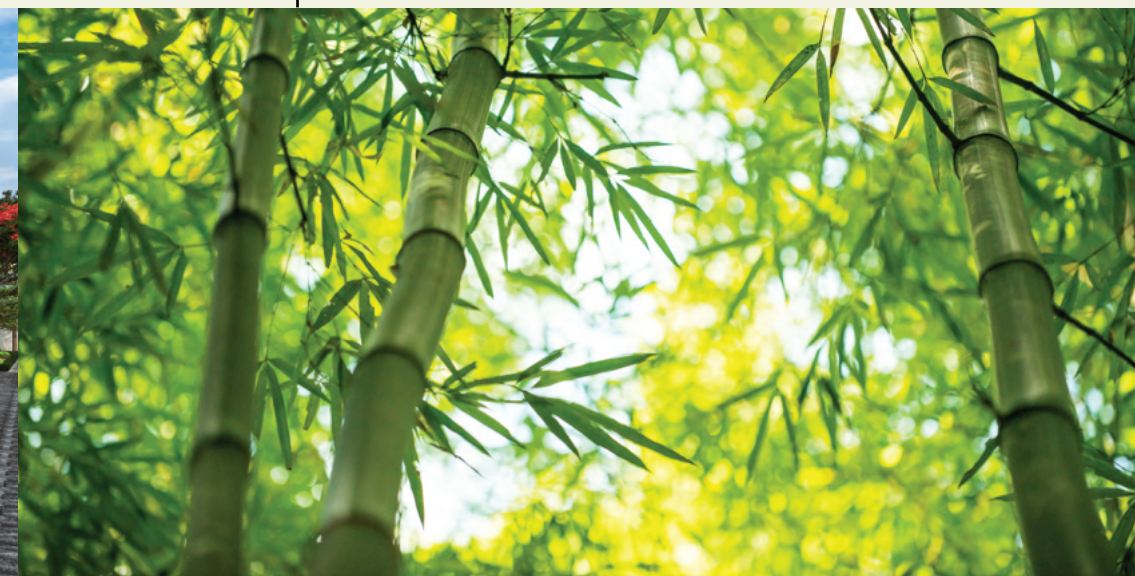


Children's Play Area

The ideal place for your children to spend their time, with lots of fun and entertainment for the little ones.

Bamboo Garden

A garden that is made placid and evokes an atmosphere that is rustic and in tune with nature.



Yoga Lawn

Practice your many asanas and positions in a peaceful lawn out in the open amongst verdant greenery.

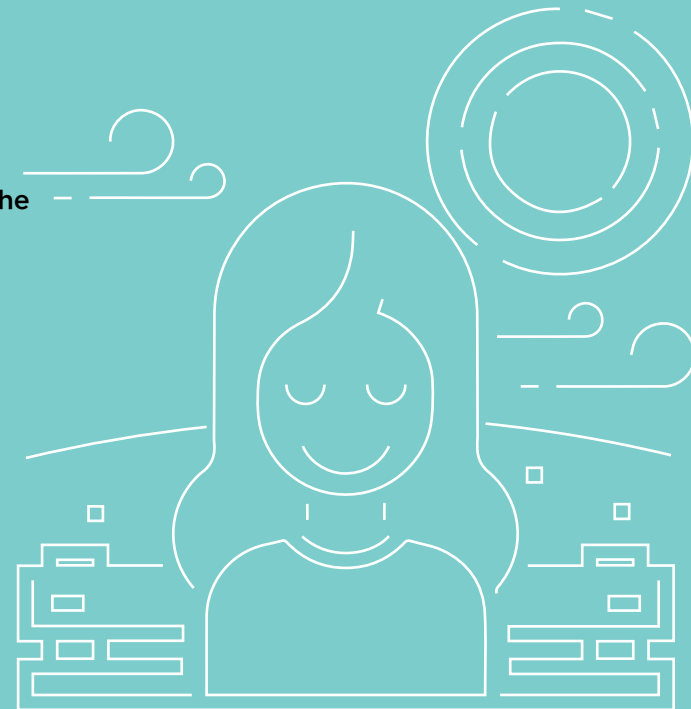


STAY



TO HOLISTIC SPACE

There is a systematic design in place that allows for the perfect utilization of space where the landscape is created to produce a harmonious enclosure that is state of the art.



Tree-Lined Avenues

Landscape is designed with seasonal flowering trees on the side of the roads, giving a green ambience to the whole development.

Pedestrian Infrastructure

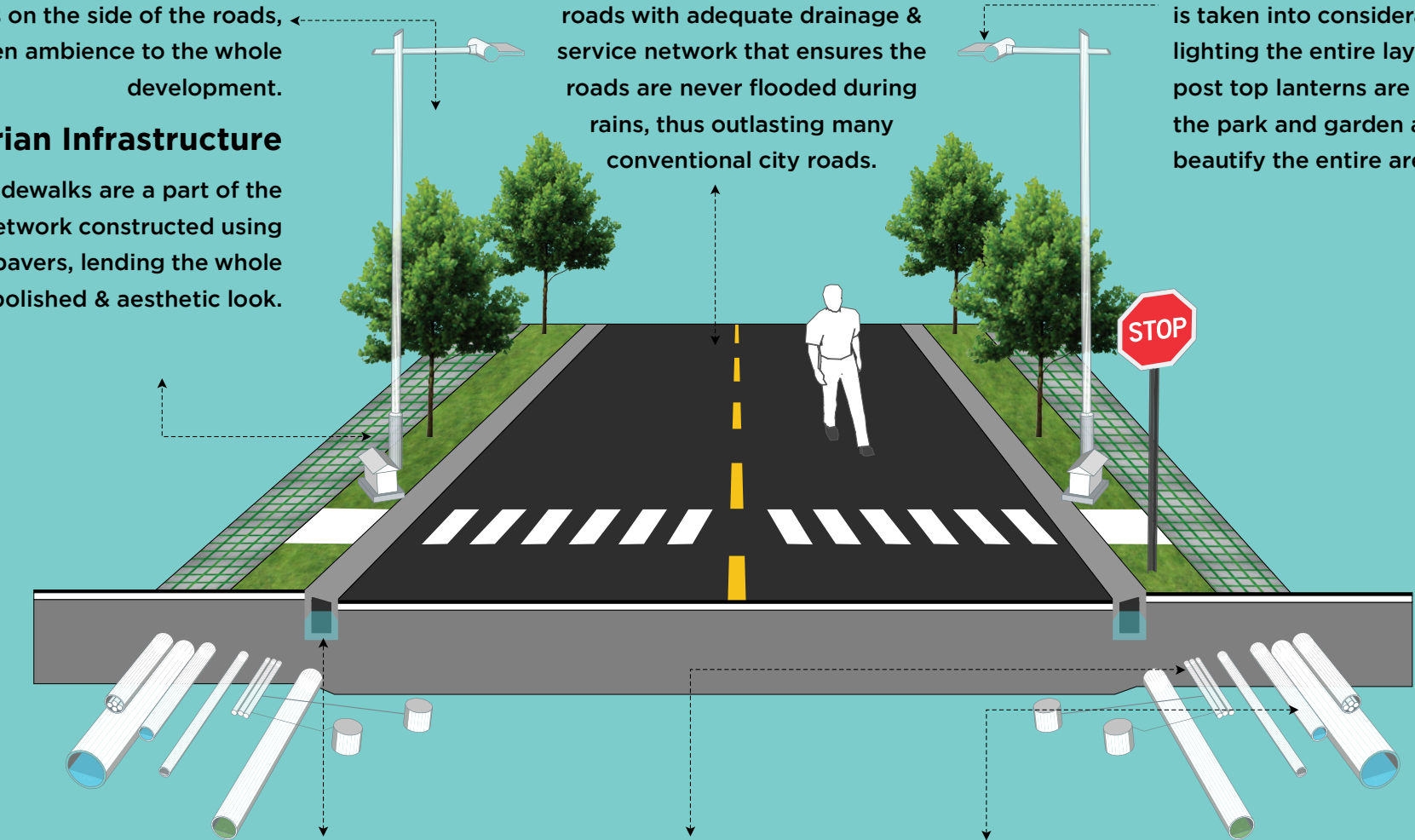
Pedestrian sidewalks are a part of the road network constructed using concrete pavers, lending the whole affair a polished & aesthetic look.

Road Network

We provide well-designed asphalt roads with adequate drainage & service network that ensures the roads are never flooded during rains, thus outlasting many conventional city roads.

Lighting System

Modern LED Street lighting system is taken into consideration while lighting the entire layout. Also, post top lanterns are provided for the park and garden areas to beautify the entire area.



Rain Water Harvesting

Rain water harvesting does recharging of the ground water by soak/percolation pits running along the drain. The excess water post harvesting is disposed to the external municipal drain as topology of the site.

Modern Electric Cabling

From ground transformers to underground cabling, the infrastructure will be far more effective and far less intrusive





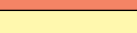

Water System

The water supply system is designed to provide reliable service, easy maintenance & most hygienic conditions for the project. Through a suitable capacity overhead tank, water is supplied via a gravity distribution system enhancing the flow pressure for each plot.

Amenities

1. Jogging Track
2. Grand Entry Plaza
3. Bamboo Garden
4. Meditation Lawn
5. Senior Citizen Park
6. Stone Bench
7. Multi-Purpose Court
8. Outdoor Gym
9. Yoga Lawn

Plot Details

SL No.	Plot Size		Colour
1.	9.14 x 12.19 M	30 x 40 FT	
2.	9.14 x 10.72 M	30 x 35 FT	
3.	9.14 x 15.24 M	30 x 50 FT	
4.	12.19 x 15.24 M	40 x 50 FT	
5.	Odd Sites		
6.	CA Site		

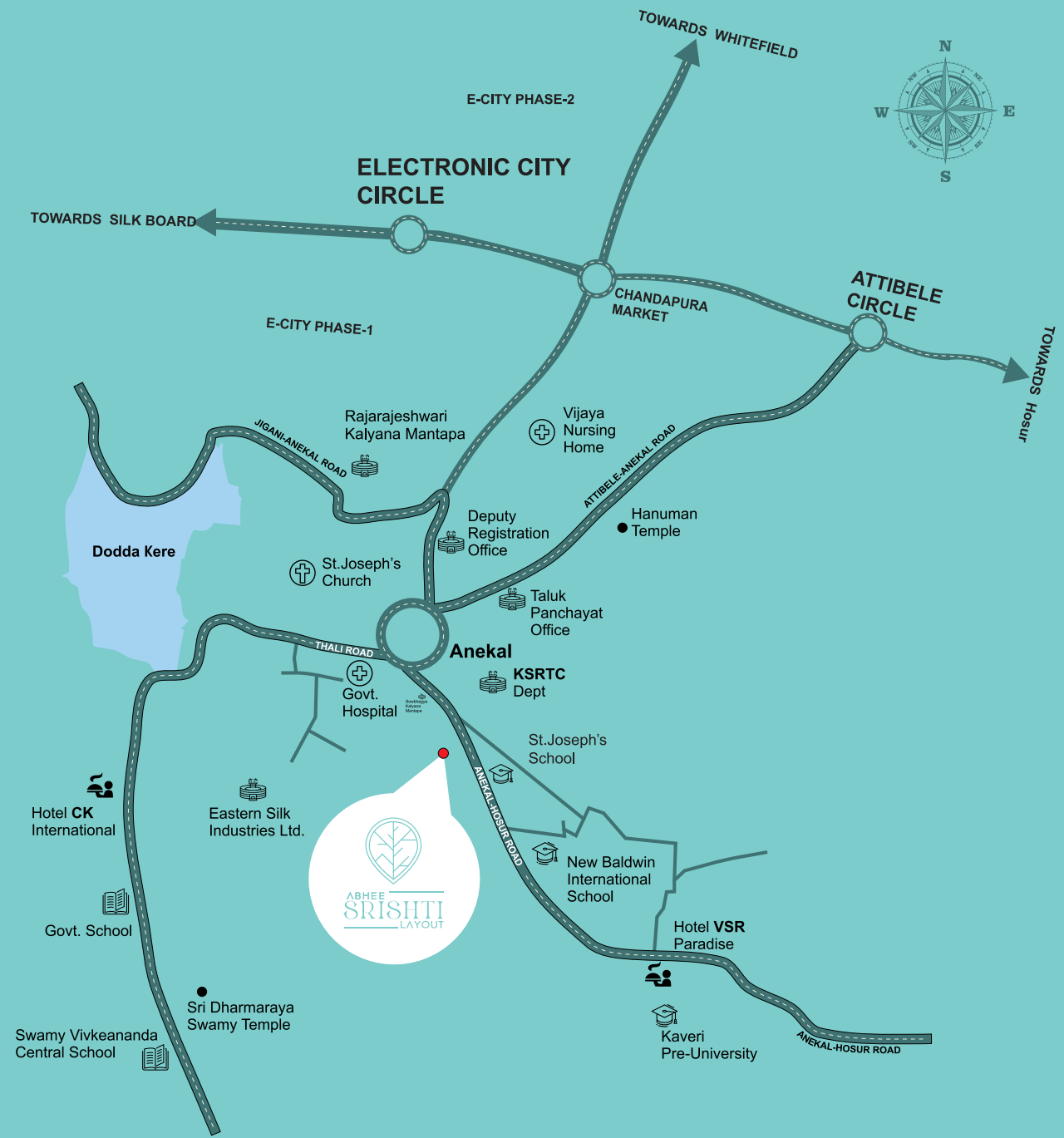


STAY



TO MODERN LIFE

To be connected to the comforts of contemporary lifestyle is imperative for any space, where all the essential facilities and more are available at arm's length. Here it is so.



Educational

- Indian Public School
- Saraswathi Vidya Mandira School
- Rishi Public School
- Anekal Public School
- Moulya Gurukul International School
- St. Joseph's School
- New Baldwin International Residential School
- Akshara College
- Alliance College Of Engineering, Law And Design
- Kaveri Pu College & School Of Nursing
- Vishwa Chethana Pu College
- St. Joseph's Pu College, Anekal
- Spurthy Group Of Institutions

Hospital

- Raghu Speciality Hospital, Child Care Nursing
- Home And Vaccination Centre
- Government Hospital
- Srinivasa Hospital & Nursing Home
- Vijaya Nursing Home
- Aditi Multi Speciality Hospital
- Anekal Health Care Hospital
- Veterinary Hospital Anekal
- Akshaya Physiotherapy And Pain Relief Clinic
- Ganga Speciality Hospital
- Arogyadhama Primary Health Center

STAY



TO SRISHTI'S SUCCESS

There are many reasons why one should find their little plot of paradise here at Srishti; here are some of the most pertinent reasons why one should do so.



Great Investment

Srishti is located close to an area that will see great appreciation in land value, ensuring great ROI.



Safe & Secure

There is a great community environment that also provides 24 X 7 security for all the plots.



Well-Developed Layout

The infrastructure facilities here are second to none, and is a holistic setup fine-tuned for efficiency.



Underground Electric Cabling

From ground transformers to underground cabling, the infrastructure will be far more effective and far less intrusive



Connectivity

The location here is also well connected to many hubs of modernity, including the Bommasandra metro station.



Brand Value

Abhee is a renowned brand with several ventures that have all been well-received, so you can rely on us.

RERA NO : PRM/KA/RERA/1251/308/PR/080223/005701



Office address

Abhee Ventures Private Limited

Regd Office: #393, 1st Floor, 15th Cross,
5th Main Road, Sector 6, HSR Layout,
Bangalore - 560 102

Site address

Abhee Srishti

SY.No. 29/2, 36/2, (old Sy no. 36), 38/1A4,
Hompalagatta, Anekal, Bengaluru Urban,
Karnataka - 562 106

PHONE : +91 74062 11114



Note: This brochure is only a conceptual presentation of the project and not a legal offering. The promoters reserve the right to make changes in the elevation, plan and specification as deemed fit
All applicable Taxes Extra, conditions apply*