

Extra Windy Homes ...



ESTELLA

- *The Dream Spires* -

2 BHK Smart Homes

- WAKAD -



## SPECIFICATIONS

### Structure

- Earthquake resistant RCC frame of superior quality.

### Masonry

- 6 inches fly ash bricks.

### Plaster

- Gypsum finish walls internally and sand faced cement plaster for external walls

### Electrification

- Ample light points with superior quality copper wiring TV and telephone point In living and AC points in all rooms provision for inverter point.

### Tiling

- Vitrified tiles for entire flat and anti skid tiles for terrace Ceramic tiles up to window top in kitchen Ceramic tiles up to 7 feet height in toilets.

### Door

- Both sides laminated wooden doors with wooden / granite frames

### Painting

- Internal plastic emulsion paint in flat and superior quality synthetic based paint for exteriors of building.

### Windows

- Powder coated Aluminium sliding windows with safety Grills and Granite frames

### Kitchen

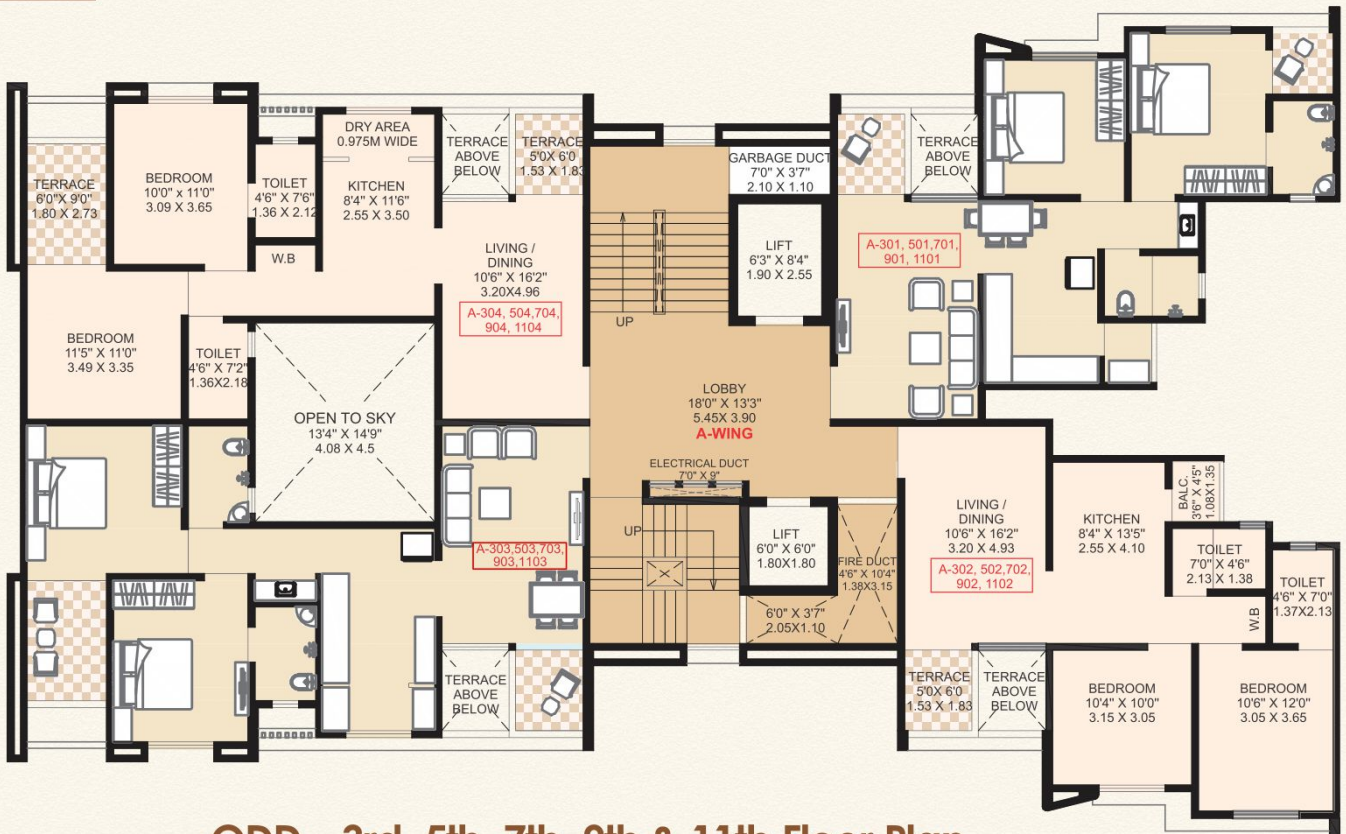
- Granite top kitchen platform stainless steel sink glazed tiles dado.

### Sanitary Ware

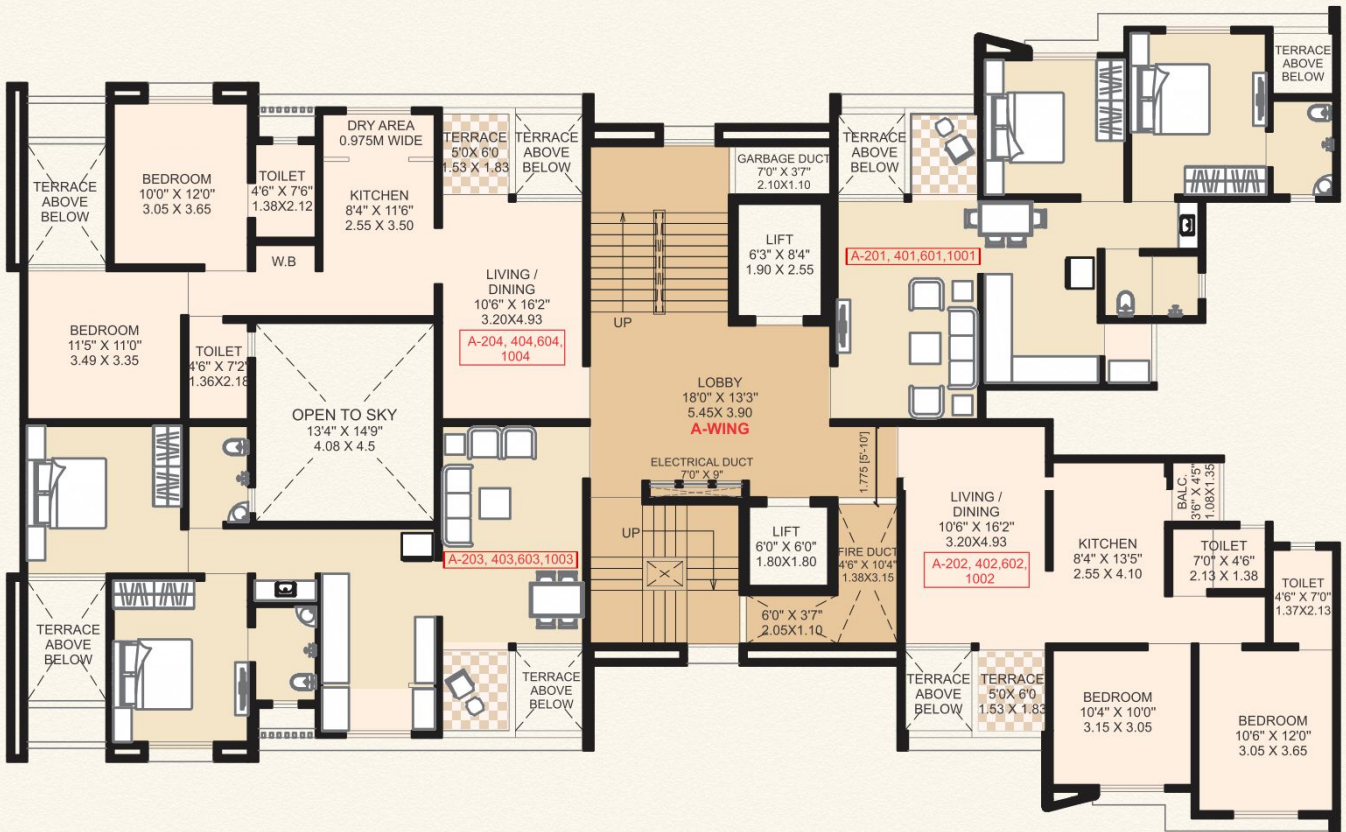
- Sanitary Ware of Hindware / Jaguar
- CP fittings – Jaguar or Hindware.



# A- WING



ODD - 3rd, 5th, 7th, 9th & 11th Floor Plan



EVEN - 2<sup>nd</sup>, 4th, 6th & 10th Floor Plan

# Cut Section



# Cut Section



# Cut Section



# Cut Section



# AMENITIES

- Rain Water Harvesting
- Landscaped Garden
- Attractive Entrance Gate for Society
- Backup for Lift and Common Areas
- CCTV Surveillance
- Security Cabin at Entrance Gate
- Intercom Facility
- Activity Hall
- Senior Citizen Sit-out
- In-house Fitness Center with Gymnasium
- Kids Play Area
- Walking Track

# LOCATION MAP



## CREDITS

**Architect**  
Shilpi Architects  
and Planners

**RCC Consultant**  
3D Prime Consultants

**Legal Advisor**  
Adv. Lalit Jhunjhunwala  
Triyama Legal

**Branding & Media**  
Versatile Advertising  
(+91-705 750 7070)

- A Project by -



- Site Office -  
S. No. 59/2/1A, 59/2/1B,  
Next to Casa Imperia,  
Behind Atlanta - 1,  
Wakad, Pune - 411057.  
Email: sales@praptigroup.org

For Booking, Contact:  
**+91 - 744 741 9900**  
[www.praptigroup.org](http://www.praptigroup.org)



Rera No.: **P52100017619**

You can check details at  
[maharera.mahaonline.gov.in](http://maharera.mahaonline.gov.in)

Brochure (version 1) printed on:  
21 September 2018

Disclaimer: The contents / pictures / images / renderings / maps are purely indicative in nature and are artist's conceptual and not actual depiction of the building / landscapes etc. and shall not be considered as our offer / promise / commitment of any nature in respect of the project. The common areas that have been shown in any form whatsoever is / are for the entire building or phase of the project and that the common areas will not be available on completion of the first phase of the project or later phases. The common areas shall be available for the entire building and will be developed in a Phase-wise Manner, over a period of time and will be completed and handed over after all phases are completed and we have no objection for the same. You are requested to contact our Sales Team to understand the current details regarding the project and only after thorough understanding about the same, make a decision to book the apartment/s in the project.