



BRIGADE
Building Positive Experiences

Come, Live

Life's Little Treasures
at Brigade Woods

RERA Reg. No.:
PRM/KA/RERA/1251/446/PR/180611/001895
Available at www.rera.karnataka.gov.in



Closer to your needs
CLOSEST TO YOUR HEART

BRIGADE
WOODS
— WHITEFIELD —

For every person who longs for the pace of a city life, there is someone who finds bliss far, far away from the hustle and bustle. For those who crave peace, quiet and privacy, there is nothing better than a home nestled among gorgeous trees. And for those who swear by the fast-paced city life, there is nothing better than living in the comforts of the city. But one thing common between them is the innate desire to live memorable moments that over time become life's little treasures. Treasures that will be cherished forever.

Presenting Brigade Woods, just a handful of woodsy inspired dream homes that run a gamut of comforts to appeal to both kinds.



A life 'full of life'

Filled with happiness & joy

Awaits you at Brigade Woods

Home to over 17 different species of flora, Brigade Woods is an exemplary project where nature and modern infrastructure entwine harmoniously. Living around trees benefit us in many ways and an overall improved physical & mental health is one of them. Spending time around trees has been found to yield better cognitive function and our overall well-being. With the knowledge that living around trees keeps us hale & hearty, over 350 fully grown trees are being retained in their original form around these thoughtfully designed low-rise apartments.

A green oasis in the heart of Whitefield.



This is MY big tree

A squirrel climbed it quickly

Slipped through my neighbour's tree

Located in Whitefield, one of the most exciting neighbourhoods in Bengaluru, Brigade Woods is surrounded by Brigade Tech Park, Brigade Bhuwalka Icon, GR Tech Park, Shantiniketan & ITPL, hospitals, banks, restaurants and reputed educational institutions. The location is known for its thriving social community and physical infrastructure. The upcoming Namma Metro Rail project and major roads connect Brigade Woods to the rest of the city. Whitefield is also host to various malls such as Forum Value Mall, Phoenix Marketcity, Park Square Mall, and Inorbit Mall. Although Brigade Woods is surrounded by the best of urban infrastructure, it still is an oasis with lush green spaces and dense woods.

Here you will experience the bliss of living amid woods coupled with urban comforts that the city has to offer. Truly a place like no other.



Middle of the city

Close to work and comforts

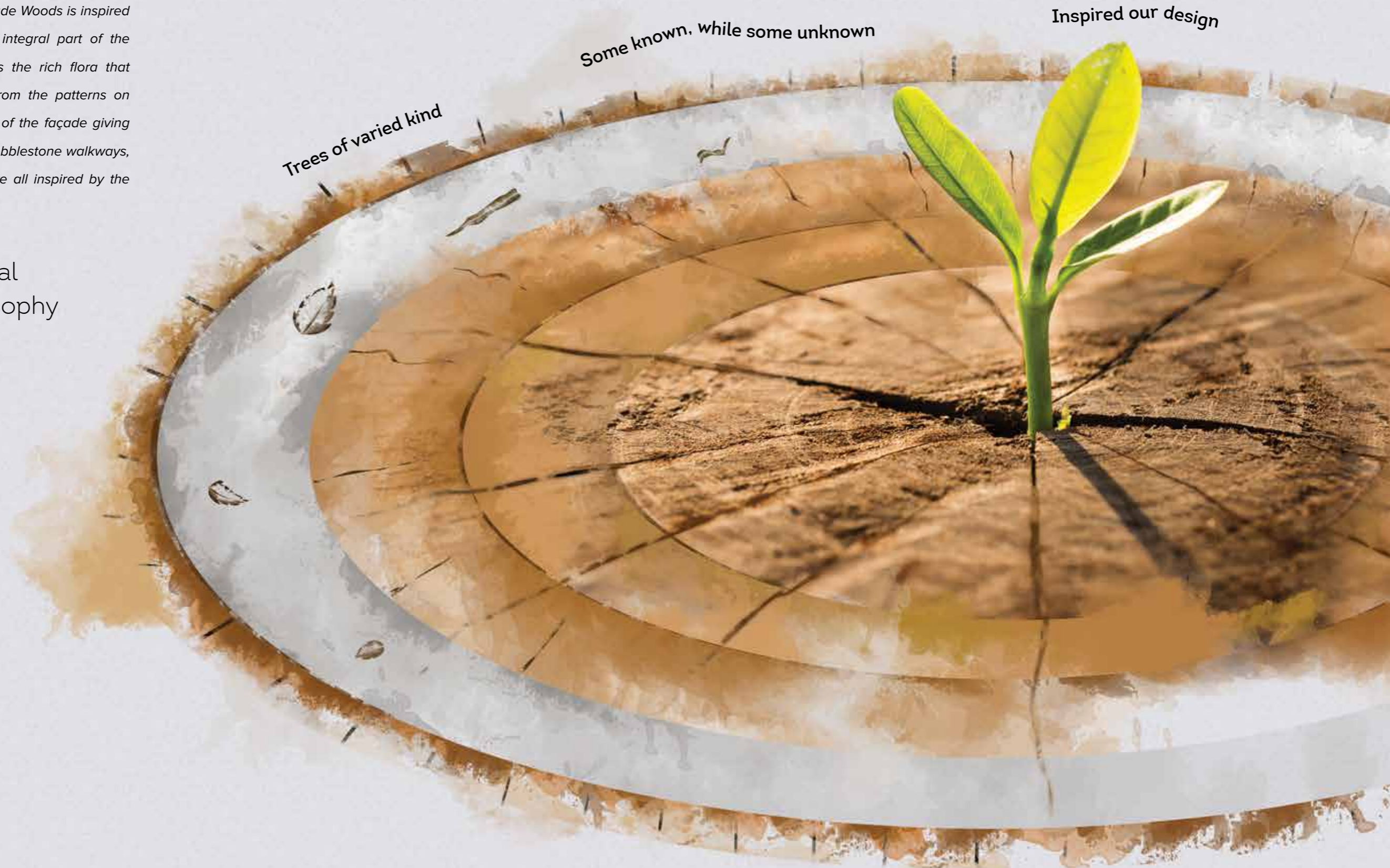
Rests my paradise

Where location is everything



The unique structural design at Brigade Woods is inspired by the dense trees which are an integral part of the surroundings. Every detail emulates the rich flora that is indigenous to the project site, from the patterns on the pavement to the earthy colours of the façade giving these homes a natural warm feel. Cobblestone walkways, earthy tones and smart planning are all inspired by the characteristic synergy of the woods.

Biomimicry is central to the design philosophy at Brigade Woods.

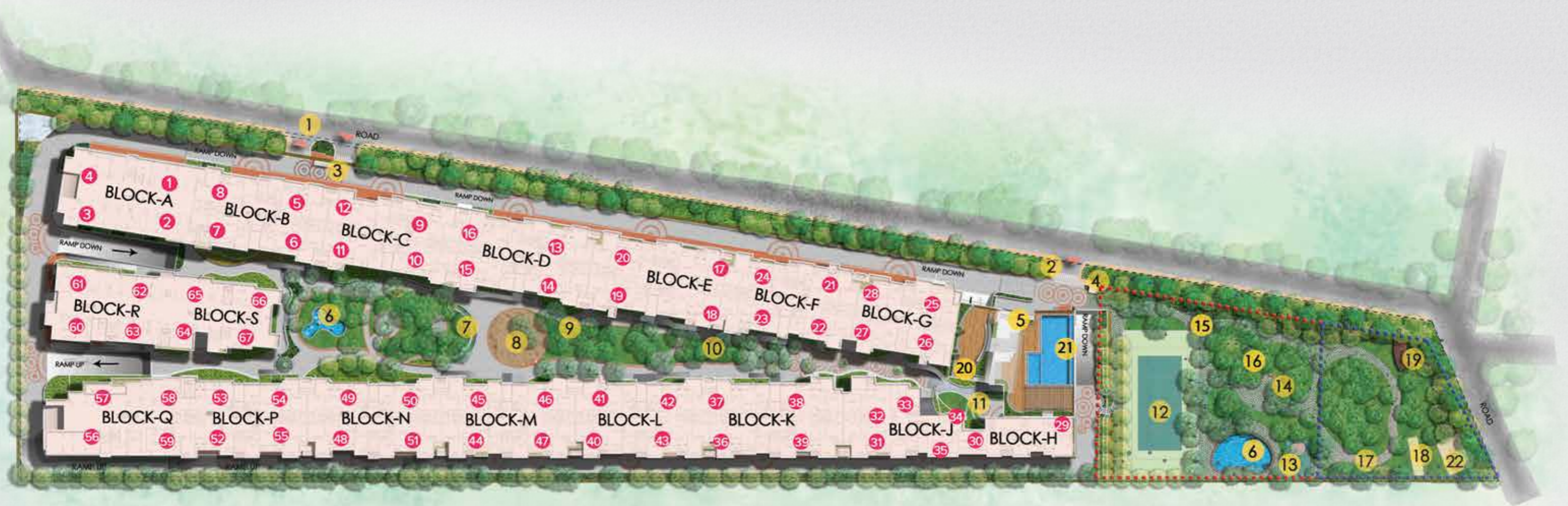


Trees of varied kind

Some known, while some unknown

Inspired our design

Master Plan



LEGENDS

- | | | |
|--------------------------------|---|--|
| 1. Main Entry / Exit | 8. Children's Play Area | 16. Kids' Play Area |
| 2. Clubhouse Entry | 9. Tot Lot Area | 17. Reflexology Pathway |
| 3. Security Cabin (Main Entry) | 10. Outdoor Gym | 18. Cricket Practice Pitch |
| 4. Security Cabin (Clubhouse) | 11. Informal Seating Area | 19. Pergola with Seating |
| 5. Clubhouse | 12. Tennis Court | 20. Clubhouse Party Terrace Area |
| 6. Recharge Pond | 13. Basketball Hoop | 21. Swimming Pool (On Clubhouse Terrace) |
| 7. Open Air Theatre | 14. Seating Area | 22. Organic Waste Converter |
| | 15. 1.2m Wide Jogging / Walking Pathway | |



- Civic Amenities
- Park & Open Spaces

Indulge in diverse world-class amenities.

Apart from the joy of living around trees, you will also be able to enjoy the world-class amenities that are replete at Brigade Woods.

INDOOR

- Indoor Badminton Court
- Table Tennis Room
- Multi-purpose Hall with Pantry Space
- Billiards
- AV Room
- Gym
- Convenience Store
- Board & Card Games Area

OUTDOOR

- Terrace Party Area
- Rainwater Harvesting Pond
- Kids' Play Area
- Open Lawn
- Swimming Pool
- Tennis Court
- Basketball Hoop
- Pergola with Seating
- Cricket Practice Pitch
- Open Air Theatre
- Jogging Track
- Outdoor Gym
- Reflexology Path



Tennis Court & Clubhouse
Brigade Woods



Aerial View
Brigade Woods

Artist's impression



Entrance
Brigade Woods

Artist's impression

Rooftop Swimming Pool
Brigade Woods

Artist's impression



GROUND FLOOR PLAN

TOWERS - B, C, D, E, F, K, L, M, N & P



SUPER BUILT-UP AREA

● 2BHK - 129.79 Sq.m. / 1397 Sq.ft.

● 3BHK - 163.75 Sq.m. / 1763 Sq.ft.

● 3BHK - 157.47 Sq.m. / 1695 Sq.ft.

● 3BHK - 164.21 Sq.m. / 1768 Sq.ft.

FIRST FLOOR PLAN

TOWERS - B, C, D, E, F, K, L, M, N & P



SUPER BUILT-UP AREA

● 2BHK - 129.79 Sq.m. / 1397 Sq.ft.

● 3BHK - 157.47 Sq.m. / 1695 Sq.ft.

● 3BHK - 163.75 Sq.m. / 1763 Sq.ft.

● 3BHK - 164.21 Sq.m. / 1768 Sq.ft.

SECOND FLOOR PLAN

TOWERS - B, C, D, E, F, K, L, M, N & P



SUPER BUILT-UP AREA

- 3BHK - 161.74 Sq.m. / 1741 Sq.ft.
- 3BHK - 162.73 Sq.m. / 1762 Sq.ft.

- 3BHK - 163.75 Sq.m. / 1763 Sq.ft.
- 3BHK - 164.21 Sq.m. / 1768 Sq.ft.

THIRD AND FOURTH FLOOR PLAN TOWERS - B, C, D, E, F, K, L, M, N & P



SUPER BUILT-UP AREA

- 3BHK - 161.74 Sq.m. / 1741 Sq.ft.
- 3BHK - 163.73 Sq.m. / 1762 Sq.ft.

- 3BHK - 163.75 Sq.m. / 1763 Sq.ft.
- 3BHK - 164.21 Sq.m. / 1768 Sq.ft.

TYPICAL UNIT PLAN

1-Bedroom Unit (Type 3)



SUPER BUILT-UP AREA

57.75 Sq.m. / 622 Sq.ft.

CARPET AREA

39.24 Sq.m. / 422 Sq.ft.

The information depicted herein viz., master plans, floor plans, furniture layout, fittings, illustrations, specifications, designs, dimensions, rendered views, colours, amenities and facilities etc., are subject to change without notifications as may be required by the relevant authorities or the developer's architect, and cannot form part of an offer or contract. Whilst every care is taken in providing this information, the Developer cannot be held liable for variations. All illustrations and pictures are artist's impression only. The information are subject to variations, additions, deletions, substitutions and modifications as may be recommended by the company's architect and/or the relevant approving authorities. The Developer is wholly exempt from any liability on account of any claim in this regard. (1 square metre = 10.764 square feet). E & OE.

TYPICAL UNIT PLAN

2-Bedroom Unit (Type 15)

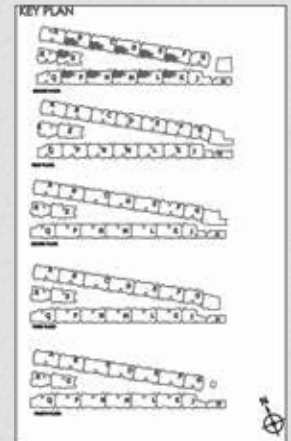


SUPER BUILT-UP AREA	CARPET AREA	BALCONY CARPET AREA
129.79 Sq.m. / 1397 Sq.ft.	86.18 Sq.m. / 928 Sq.ft.	4.99 Sq.m. / 54 Sq.ft.

The information depicted herein viz., master plans, floor plans, furniture layout, fittings, illustrations, specifications, designs, dimensions, rendered views, colours, amenities and facilities etc., are subject to change without notifications as may be required by the relevant authorities or the developer's architect, and cannot form part of an offer or contract. Whilst every care is taken in providing this information, the Developer cannot be held liable for variations. All illustrations and pictures are artist's impression only. The information are subject to variations, additions, deletions, substitutions and modifications as may be recommended by the company's architect and/or the relevant approving authorities. The Developer is wholly exempt from any liability on account of any claim in this regard. (1 square metre = 10.764 square feet). E & OE.

TYPICAL UNIT PLAN

3-Bedroom Unit (Type 21A)



SUPER BUILT-UP AREA

157.47 Sq.m. / 1695 Sq.ft.

CARPET AREA

103.93 Sq.m. / 1119 Sq.ft.

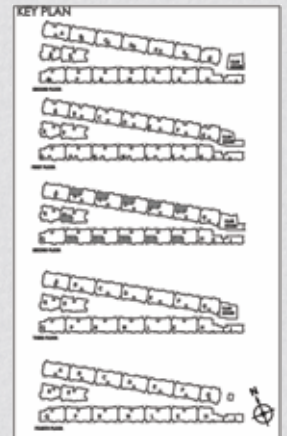
BALCONY CARPET AREA

7.41 Sq.m. / 80 Sq.ft.

The information depicted herein viz., master plans, floor plans, furniture layout, fittings, illustrations, specifications, designs, dimensions, rendered views, colours, amenities and facilities etc., are subject to change without notifications as may be required by the relevant authorities or the developer's architect, and cannot form part of an offer or contract. Whilst every care is taken in providing this information, the Developer cannot be held liable for variations. All illustrations and pictures are artist's impression only. The information are subject to variations, additions, deletions, substitutions and modifications as may be recommended by the company's architect and/or the relevant approving authorities. The Developer is wholly exempt from any liability on account of any claim in this regard. (1 square metre = 10.764 square feet). E & OE.

TYPICAL UNIT PLAN

3-Bedroom Unit (Type 24A)



SUPER BUILT-UP AREA

161.74 Sq.m. / 1741 Sq.ft.

CARPET AREA

106.49 Sq.m. / 1146 Sq.ft.

BALCONY CARPET AREA

7.41 Sq.m. / 80 Sq.ft.

The information depicted herein viz., master plans, floor plans, furniture layout, fittings, illustrations, specifications, designs, dimensions, rendered views, colours, amenities and facilities etc., are subject to change without notifications as may be required by the relevant authorities or the developer's architect, and cannot form part of an offer or contract. Whilst every care is taken in providing this information, the Developer cannot be held liable for variations. All illustrations and pictures are artist's impression only. The information are subject to variations, additions, deletions, substitutions and modifications as may be recommended by the company's architect and/or the relevant approving authorities. The Developer is wholly exempt from any liability on account of any claim in this regard. (1 square metre = 10.764 square feet). E & OE.

TYPICAL UNIT PLAN

3-Bedroom Unit (Type 26A)



SUPER BUILT-UP AREA

163.73 Sq.m. / 1762 Sq.ft.

CARPET AREA

108.58 Sq.m. / 1169 Sq.ft.

BALCONY CARPET AREA

7.41 Sq.m. / 80 Sq.ft.

The information depicted herein viz., master plans, floor plans, furniture layout, fittings, illustrations, specifications, designs, dimensions, rendered views, colours, amenities and facilities etc., are subject to change without notifications as may be required by the relevant authorities or the developer's architect, and cannot form part of an offer or contract. Whilst every care is taken in providing this information, the Developer cannot be held liable for variations. All illustrations and pictures are artist's impression only. The information are subject to variations, additions, deletions, substitutions and modifications as may be recommended by the company's architect and/or the relevant approving authorities. The Developer is wholly exempt from any liability on account of any claim in this regard. (1 square metre = 10.764 square feet). E & OE.

TYPICAL UNIT PLAN

3-Bedroom Unit (Type 27A)



SUPER BUILT-UP AREA

163.75 Sq.m. / 1763 Sq.ft.

CARPET AREA

108.38 Sq.m. / 1167 Sq.ft.

BALCONY CARPET AREA

7.43 Sq.m. / 80 Sq.ft.

The information depicted herein viz., master plans, floor plans, furniture layout, fittings, illustrations, specifications, designs, dimensions, rendered views, colours, amenities and facilities etc., are subject to change without notifications as may be required by the relevant authorities or the developer's architect, and cannot form part of an offer or contract. Whilst every care is taken in providing this information, the Developer cannot be held liable for variations. All illustrations and pictures are artist's impression only. The information are subject to variations, additions, deletions, substitutions and modifications as may be recommended by the company's architect and/or the relevant approving authorities. The Developer is wholly exempt from any liability on account of any claim in this regard. (1 square metre = 10.764 square feet). E & OE.

TYPICAL UNIT PLAN

3-Bedroom Unit (Type 29B)



SUPER BUILT-UP AREA

164.21 Sq.m. / 1768 Sq.ft.

CARPET AREA

109.14 Sq.m. / 1175 Sq.ft.

BALCONY CARPET AREA

7.43 Sq.m. / 80 Sq.ft.

The information depicted herein viz., master plans, floor plans, furniture layout, fittings, illustrations, specifications, designs, dimensions, rendered views, colours, amenities and facilities etc., are subject to change without notifications as may be required by the relevant authorities or the developer's architect, and cannot form part of an offer or contract. Whilst every care is taken in providing this information, the Developer cannot be held liable for variations. All illustrations and pictures are artist's impression only. The information are subject to variations, additions, deletions, substitutions and modifications as may be recommended by the company's architect and/or the relevant approving authorities. The Developer is wholly exempt from any liability on account of any claim in this regard. (1 square metre = 10.764 square feet). E & OE.

SPECIFICATIONS

Apartment Units - Flooring

Living/Dining: Large size vitrified tiles
Master Bedroom: Laminate wooden flooring or vitrified tiles as option
Other Bedrooms: Laminate wooden flooring or vitrified tiles as option
Balcony/Deck: Outdoor patio & planter in matt finish vitrified tiles
Master Bedroom Toilet: Ceramic tiles flooring and for washbasin polished granite counter
Other Toilets: Ceramic tiles flooring and for washbasin polished granite counter
Kitchen: Large size vitrified tiles (Same as living)
Utility: Large size vitrified tiles (Same as living)

Bathrooms

CP Fittings: Grohe/Kohler/Bathline/Jaquar or equivalent
Sanitary Fixtures: Duravit/Kohler/Roca/Hindware/American std. or equivalent
Accessories - Soap tray, robe hook, toilet paper holder, towel rod: Grohe/Jaquar or equivalent
Shower: Overhead shower + telephonic hand shower and glass partition only in MBR toilet
Countertop Washbasin: Duravit/Kohler/Roca/American std. or equivalent above granite counter
Wall mounted EWC: Duravit/Kohler/Roca/American std. or equivalent
False Ceiling: Calcium silicate boards/Sintex board

Kitchen

Counter: Provision for modular kitchen
Plumbing/Electrical: Plumbing and electrical point provision for water purifier, refrigerator, microwave, washing machine and dish washer. Hot & cold mixer with long body bib cock. Sink provision in kitchen area.

Doors

Main Entry Door: Teak wood/hard wood frame with designer shutter
Bedroom Doors: Pre-engineered frames/Pre-engineered shutters
Toilet Doors: Pre-engineered frames/Pre-engineered shutter & painted
Utility: Anodised aluminium/UPVC (Wherever applicable)
Balcony Door: UPVC/Aluminium with bug screen 3 track
Shaft Door: MS door frame with steel shutter

Windows

UPVC/anodised aluminium with bug screen

Paint

Exterior: External texture paint/scratch coat with exterior emulsion
Interior:
Common Area: Acrylic emulsion paint/scratch coat
Staircase, Utility Area and Service Area: Oil bound distemper
Basement: Oil bound distemper
Unit walls: Acrylic emulsion paint
Internal Ceiling
Common Area: Acrylic emulsion paint
Staircase, Utility Area and Service Area: Oil bound distemper
Basement: Oil bound distemper
Unit Ceiling: Acrylic emulsion paint - ICI Dulux
Steel Works: Synthetic enamel paint - Berger/Asian Paints or equivalent
Woodwork: Main door melamine polish, other doors enamel paint

Electrical Load

1 - Bedroom Apartment: 4kW
2 - Bedroom Apartment: 5kW
2.5 - Bedroom Apartment: 5kW
3 - Bedroom Apartment: 6kW
3.5 - Bedroom Apartment: 7kW

DG Backup

1 - Bedroom Apartment: 2kW
2 - Bedroom Apartment: 3kW
2.5 - Bedroom Apartment: 3kW
3 - Bedroom Apartment: 3kW
3.5 - Bedroom Apartment: 4kW

Security & Automation

Intercom facility/video door phone (In living or next to main door). CCTV for common areas.

**Great Place To Work 2019**

Brigade was recognised as the Best Place to work in the real estate category for the 10th year in a row by the Great Place to Work Institute

Brigade Group

Brigade Group received 'One of India's Top Challengers' award at the CWAB Awards 2019

Brigade Group received the 'Best Developer of the Year' award at the Times Business Awards 2019

Brigade was awarded as one of the Hot 50 Brands in Bengaluru under the Large Enterprise category at the Bengaluru Brand Summit 2018 by Paul Writer

Brigade Orchards

Won the 'Smart Township Project of The Year' award at the 6th Annual Siliconindia Bengaluru Real Estate Awards 2018

Brigade Exotica

Won the 'Best Residential Project' at the CIA World Construction & Infra Awards 2018

Brigade Cornerstone Utopia

Won the 'Integrated Township Project of the Year' award at the 11th Realty Plus Awards 2019 - South

Brigade Panorama

Won the award for 'Excellence in Delivery' at the 11th Realty Plus Awards 2019 - South

Brigade Palmgrove, Mysuru

Won the 'Premium Villa Project of the Year' award at the NDTV Property Awards 2018

Brigade Mountain View, Mysuru

Won the award for Best Residential Dwellings above 50 units in Mysuru at the CARE Awards 2019

MULTIPLE DOMAINS. SINGLE-MINDED COMMITMENT.

Apartments
Villas
Integrated Enclaves
Senior Living



Brigade is one of India's leading developers with over three decades of experience in building positive experiences for all its stakeholders. We have transformed the city skylines of Bengaluru, Mysuru, Mangaluru, Hyderabad, Chennai, Kochi and Ahmedabad with our developments across Residential, Offices, Retail, Hospitality and Education sectors.



Offices
Retail Spaces



Brigade's residential portfolio includes villas, villaments, penthouses, premium residences, luxury apartments, value homes, urban studios, independent living for seniors and mixed-use lifestyle enclaves & townships. Brigade is among the few developers who also enjoy a reputation of developing Grade A commercial properties. We are the license owners of the World Trade Center across South India, while our commercial spaces have top international clients operating out of them. Brigade's retail projects include Orion Mall, Orion Avenue Mall and Orion Uptown Mall. Brigade's hospitality offerings include star hotels, recreational clubs and convention centres, Celebrations Catering & Events and The Baking Company. Since its inception in 1986, Brigade has completed over 250 buildings amounting to 66 million Sq.ft. of developed space in residential, offices, retail and hospitality sectors across 7 cities.



Clubs
Hotels
Convention Centres
Schools



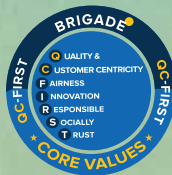
We have been consistently ranked among the 100 Best Places to Work in India by the Great Place To Work Institute for 9 years in a row. The Group has also been socially responsible and has vastly contributed to society. This responsible attitude and innovative mind-set combined with uncompromising quality of projects over the years, has created a reputed brand.



BRIGADE

Building Positive Experiences

Our
core values



Founders



Awarded
10 years in a row



To **UPGRADE TO BRIGADE**, reach us on **1800 102 9977** • email: salesenquiry@brigadegroup.com

Site Marketing Office:
Brigade Woods, ECC Road
(Next to Brigade Tech Park,
Behind GR Tech Park),
Whitefield, Bengaluru

Registered & Corporate Office:
29th & 30th Floor,
WTC Bangalore@Brigade Gateway Campus,
Dr. Rajkumar Road, Malleswaram-Rajajinagar,
Bengaluru 560 055

Dubai:
Brigade Enterprises Ltd.,
708, Atrium Centre, Bank Street, Bur Dubai
Ph: +971 4 355 5504
dubaisales@brigadegroup.com

Offices also at: CHENNAI • HYDERABAD • MYSURU