

PURAVANKARA®

NEXT GENERATION HOMES.

PURVA
zenium

INTERNATIONAL AIRPORT ROAD

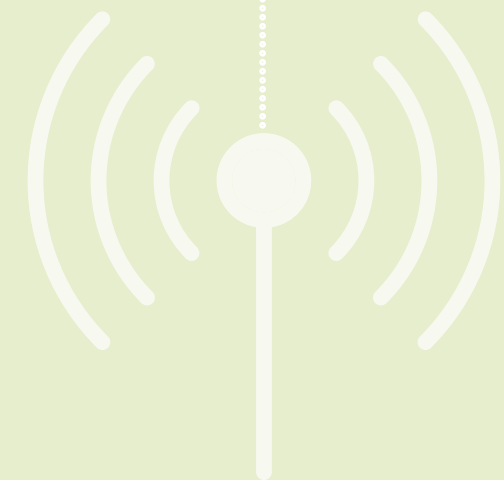
High-tech Life



Welcome to the world of the future. Homes built with the perfect blend of everything futuristic - location, community, technology, as well as world-class fixtures & fittings by brands of international repute. Situated in one of the most sought after locations in Bangalore, Purva Zenium offers a new age contemporary architecture. A home that's tuned into you, your every mood and your every priority. From lighting, temperature, security, entertainment to your music choices being controlled via BluNex App on your smart phone and some of them voice controlled via Google Home¹ device for hands-free help. In fact now you can even drink water straight off the tap, and enjoy more oxygen while at the clubhouse. At Purva Zenium, get ready to experience a better quality of life.

Lifestyle>>

Welcome to the high-tech life.



¹Requires Wi-Fi, a nearby electrical outlet and compatible devices.



Photographs of interiors, surrounding or location are digitally enhanced unless otherwise mentioned. No photos have been shot on site.



Live Futuristic>>



FUTURISTIC LOCATION

High-Growth Airport Road Corridor



FUTURISTIC COMMUNITY

Part of a Dreamland comprising of
Homes, Retail, Leisure & More.



FUTURISTIC HOMES

Tomorrow's Technology in Today's Homes.

Homes That
Ensure You
Move With
The **Times.**

<<Location of the Future

India's Most Futuristic Location.

DEVELOPMENTS THAT ARE FUELLING GROWTH IN THE AREA.



Metro

The phase 2 of metro will connect Gottigere to Nagawara and Phase 2B from Nagawara to Bengaluru International Airport.



PRR (Peripheral Ring Road)

The Proposed 65 km Peripheral Ring Road will provide a faster alternative route to reach Airport Road Corridor from Electronic City, Sarjapur Road and KR Puram.



STRR (Satellite Town Ring Road)

Proposed 6-Lane Satellite Town Ring Road will connect Airport Road Corridor with Doddaballapur, Tumkur, Hosur & Kanakapura.



SEZ

The KIADB has earmarked 1900 acres for development of Aerospace SEZ, IT & Hardware Park, and Devanahalli Business Park.



Office Spaces

Close to 15 Million sq.ft. of new office space is being added in the region which is expected to generate around 2 lakh new jobs.



Mall

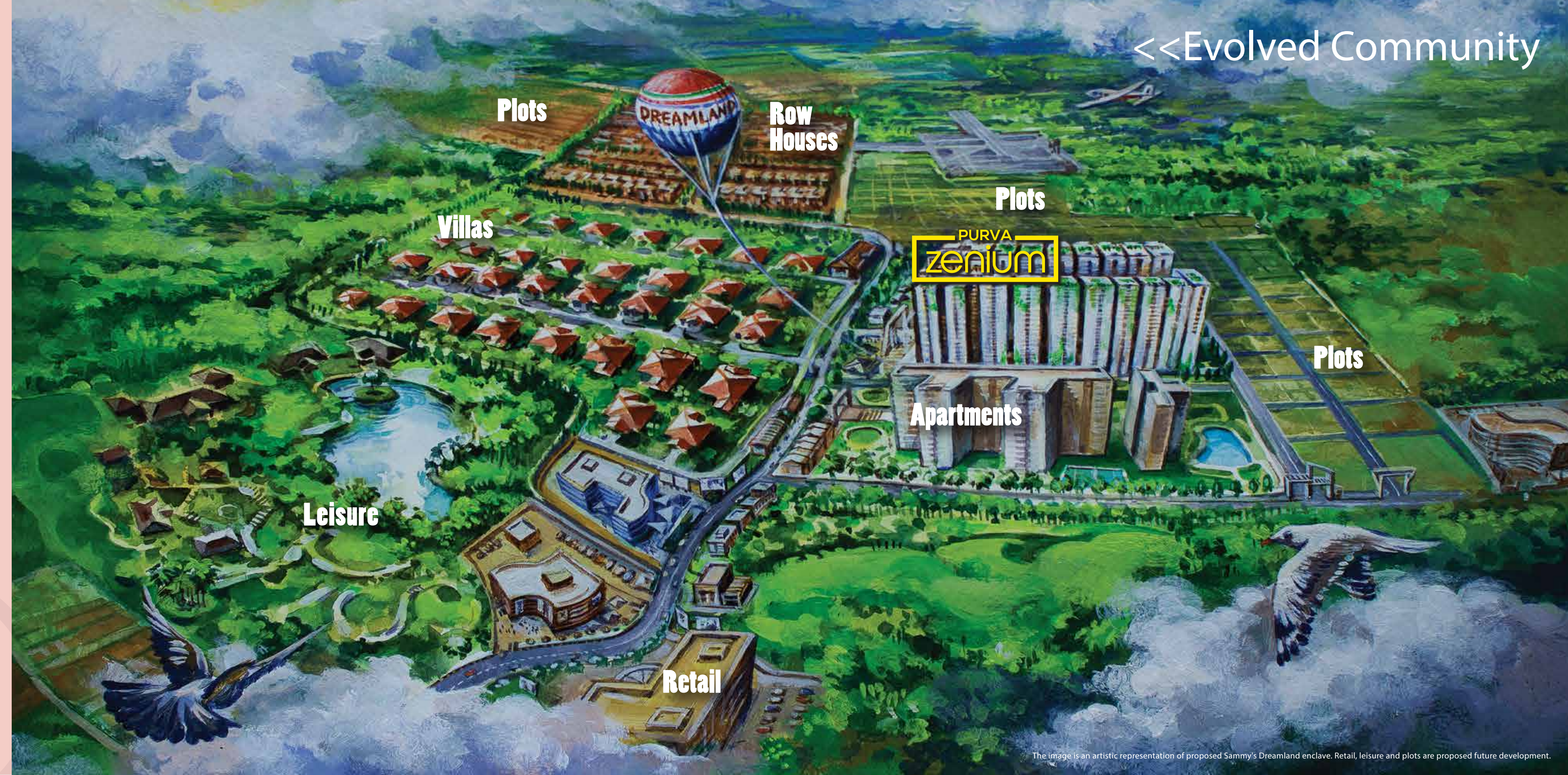
One of India's Largest Mall operator - Phoenix Market City has acquired land to develop market city in Airport Road Corridor.



It's Truly **Evolved Living** When You Live In A **Futuristic Community.**

Dreamland - Close to 150 acres of amusement park is now being redeveloped by multiple real estate developers. The new development will include homes, retail, leisure and more, making this location the most sought after address in the region.

Purva Zenium is an uber-luxury community lifestyle that reflects your evolved taste. Join the league of extraordinary neighbours located within this Dreamland. So the company, and conversations of like-minded people surround you.



<< Evolved Community

STANDARD

Fill Up Your Home With What **Defines** You **Best.**



TWO OPTIONS TO CHOOSE FROM

HOMES WITH
BluNex Life
TOMORROW'S TECHNOLOGY TODAY

Google Home

BluNex Life -
Tomorrow's Technology Today.



Photographs of interiors, surrounding or location are digitally enhanced unless otherwise mentioned. No photos have been shot on site. Home Automation package comes with a Google Home device. Kindly read the terms, conditions & relevant disclaimers pertaining to BluNex Life Package, mentioned in the penultimate page of this brochure. Google and Google Home are trademarks of Google LLC.

BluNex Life>>



BluNex Life - Tomorrow's Technology Today.

Introducing BluNex Life, the next generation of intelligent homes. Put together by some of the best technical talent in the country, using Artificial Intelligence solutions and Internet of Things (IOT) to transform the way you live. This makes Purva Zenium a fully integrated lifestyle with everything required to make your life comfortable.

Purva Zenium is the perfect futuristic next generation investment choice, one that brings you the best of both worlds, with a mix of architecture and technology. Each apartment comes with Google Home¹, which can give you hands-free help around the house. Google Home is powered by the Google Assistant. Ask it questions. Tell it to do things. It's your own Google, always ready to help. Just start by saying, "Ok Google" to get answers from Google, enjoy music, manage your everyday tasks, and easily control your smart home.

BluNex Life

with hands-free help from

Google Home

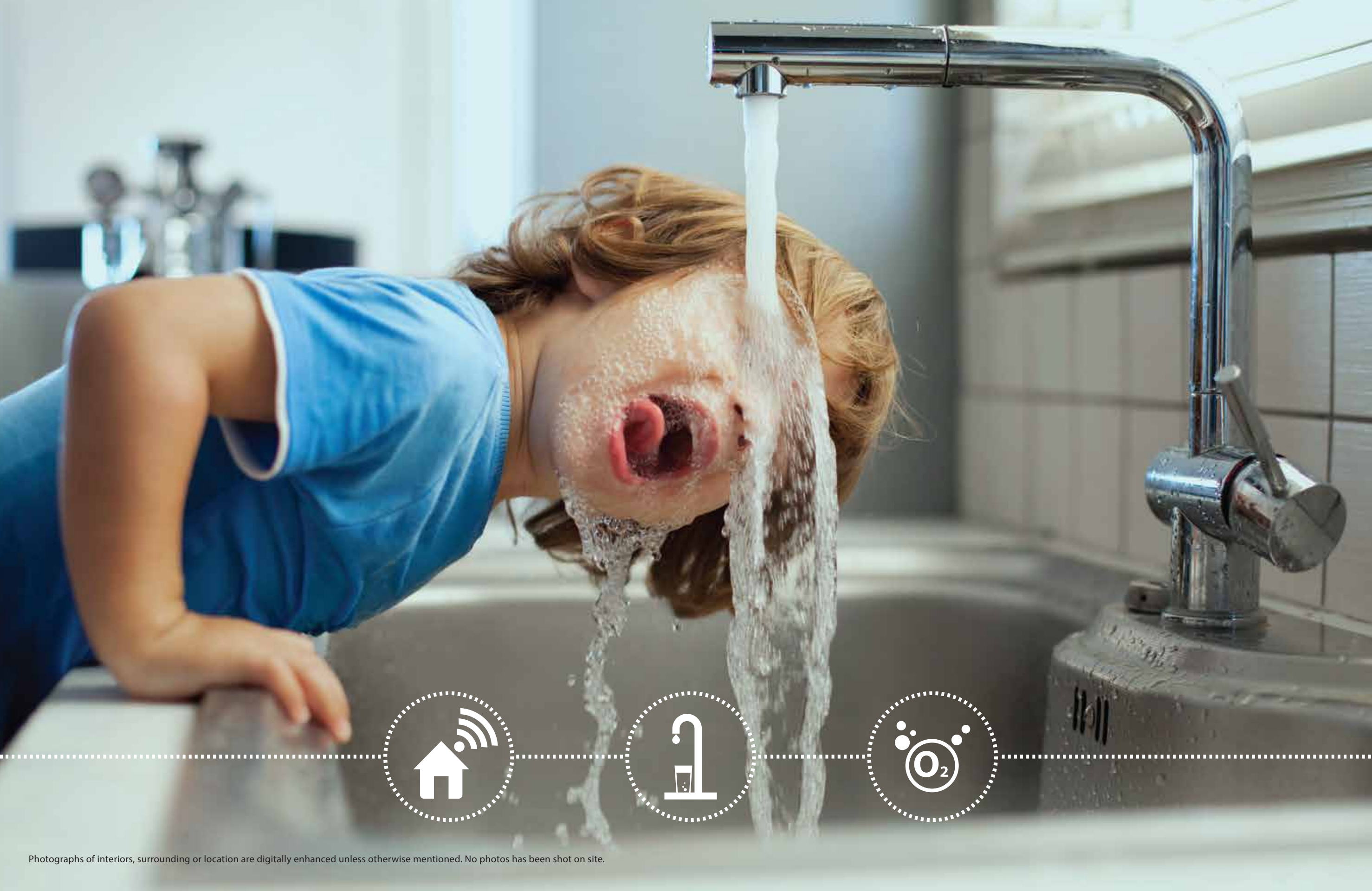


Pure Drinking Water off the Tap

Pure Oxygen Zones

Intelligent Homes

Kindly read the terms, conditions & relevant disclaimers pertaining to BluNex Life Package, mentioned in the penultimate page of this brochure. ¹Requires Wi-Fi, a nearby electrical outlet and compatible devices. May require subscriptions to access certain content. Google and Google Home are trademarks of Google LLC.



Pure Drinking Water off the Tap

Gone are the days when you need to put up a water purifier. Our kitchens are provided with purified water, every time you open the drinking water tap. Processed through a centralised treatment plant, the water is filtered multiple times with sediment filters, activated carbon filters and membrane filters, and stored in a stainless steel tank, so you enjoy the purest access to high quality drinking water.

Purified Water, Straight Off Your Kitchen Tap.

Photographs of interiors, surrounding or location are digitally enhanced unless otherwise mentioned. No photos have been shot on site. Users will need to be aware that water may get contaminated even after its output from the tap by way of human contact, contaminated holding vessels, etc. The filtration mechanism that is common to the entire building also needs periodic maintenance / replacement by the Association of Owners, as per the manufacturers user manual, failing which the water quality shall deteriorate.

Introducing **Water Efficient** Homes, For **A Cleaner, Greener** Tomorrow.



At Puravankara, we believe in being responsible citizens of the world and taking care of our planet. As a step towards being environment friendly, is understanding the importance of saving water. And that is why we have taken every effort to make every single home of ours water efficient.

Our initiative is a **3-step process which includes:**



Water Harvesting

It's our way of giving back to Mother Earth what we take from her. We achieve this through a simple process of collecting and storing rainwater into storage tanks. Treating it and then making it available for domestic use. We also direct the excess water to the ground through recharge pits, thus making it possible to recharge and increase the groundwater level as well.



Water Purification

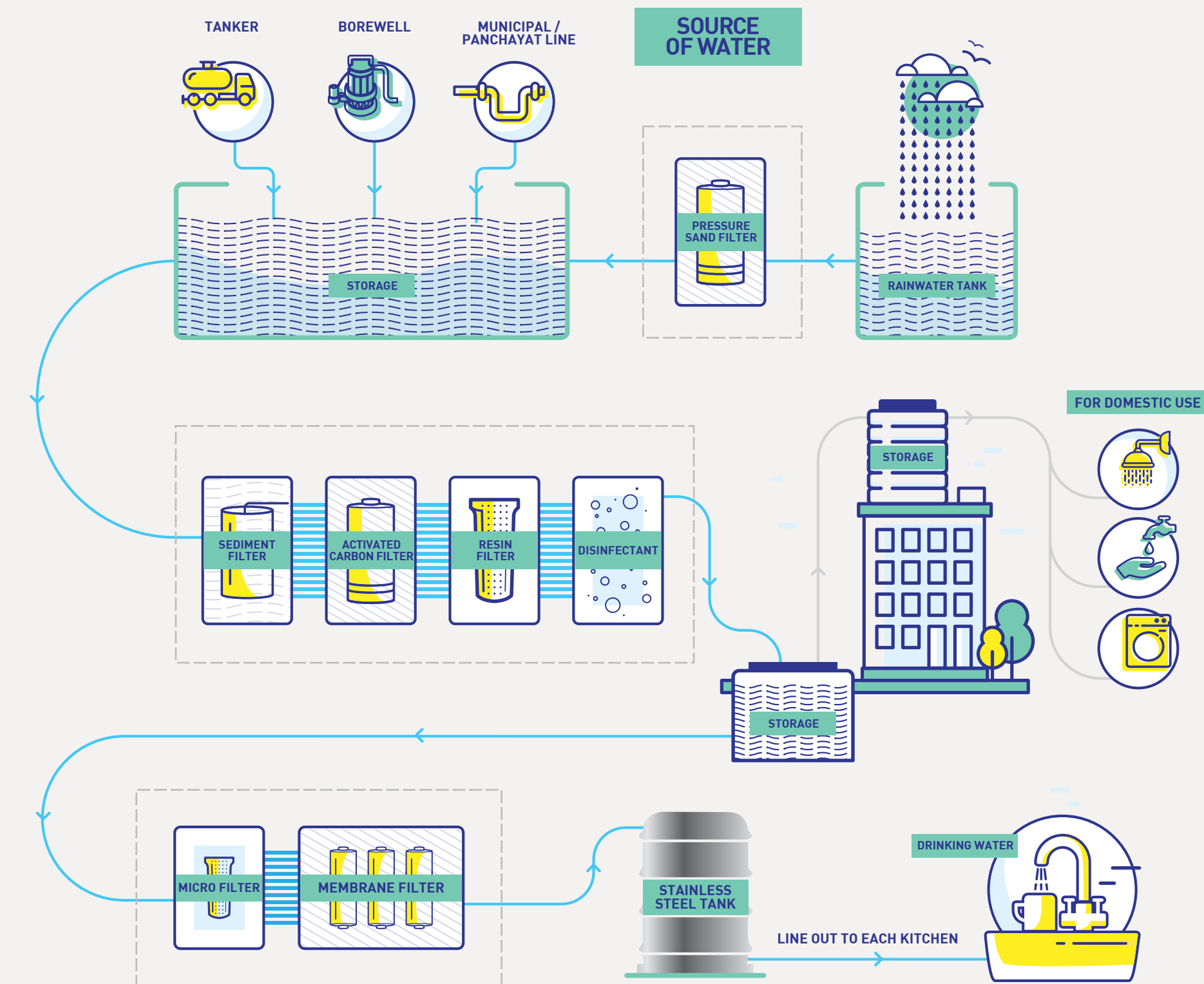
Designed to keep your health and well-being in check. We at Puravankara, ensure safe and purified drinking water in your kitchen tap, through a rather rigorous treatment process. No matter what your water source is, be it Borewell/Tanker/Municipal/Panchayat water it goes through multiple levels of treatment as well as filtration before it is made available in your kitchen taps, for you to drink straight out off. This way, you and your loved ones stay healthy always.



Water Recycling

Every drop of water used in a home, can be treated and used again. In fact, our Sewage Treatment Plant, is especially designed to treat waste water (both grey & black water). Once the waste water has been treated through STP (MBR technology), it is then collected in a separate water tank and pumped for flushing and gardening. This not only makes us self-sufficient, but also ensures we play our part in keeping our planet green.

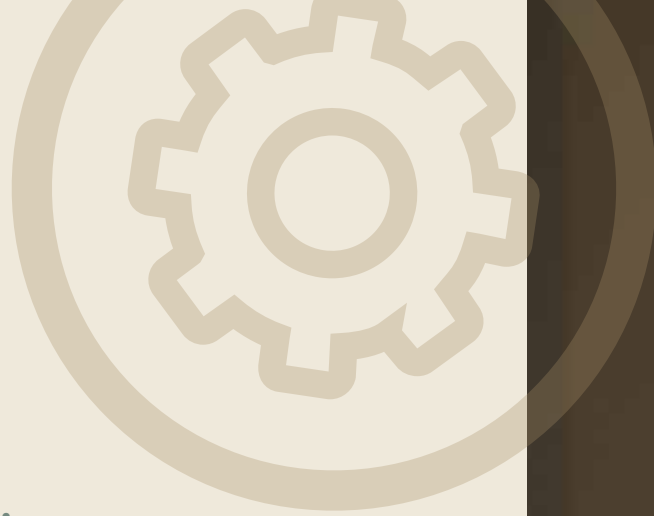
Your **Water** Efficient **Home.**



Oxygen is the very essence of life. In the polluted environments that we live in today, oxygen levels are so low. Whereas, air that's rich in oxygen offers many health benefits including relaxed mental & physical health for your overall well-being. At Purva Zenium, this is exactly why we supply a fresh dose of oxygen at regular intervals at your clubhouse. So you thoroughly enjoy your experience out here, no matter what you do. Visit the oxygen clubhouse and feel rejuvenated.

For The **First-time** Ever, Presenting The **Oxygen Club.**





Intelligent Homes, So You Can Truly **Relax** And **Unwind**.

Your home at Purva Zenium would be an experience to own as it comes with:

- Intelligent Biometric Security
- Intelligent Lighting & Cooling
- Intelligent Motion Sensors
- Intelligent Master Command for all Smart Appliances
- Last Mile Fibre Optic Infrastructure
- Hands-free Entertainment with Google Home¹
- Get Answers from Google Home¹
- One Voice Command for Multiple Actions via Google Home¹
- Wi-fi Boosters to Enhance Intra-home Connectivity
- 24/7 Remote Connectivity to your Home from Anywhere in the World
- Intelligent Home Controls by Voice & BluNex App





Amenities>>

Amenities That Keep You Hale & Hearty. Now That's **Smart Thinking.**

A tropical styled landscape design incorporating beautiful layers of gardens at different levels offers a spectacular visual treat at Purva Zenium. A home that connects you to nature, where you experience raindrop ripples, water cascades, biomes & walkways, as well as an ecosystem of birds & butterflies.

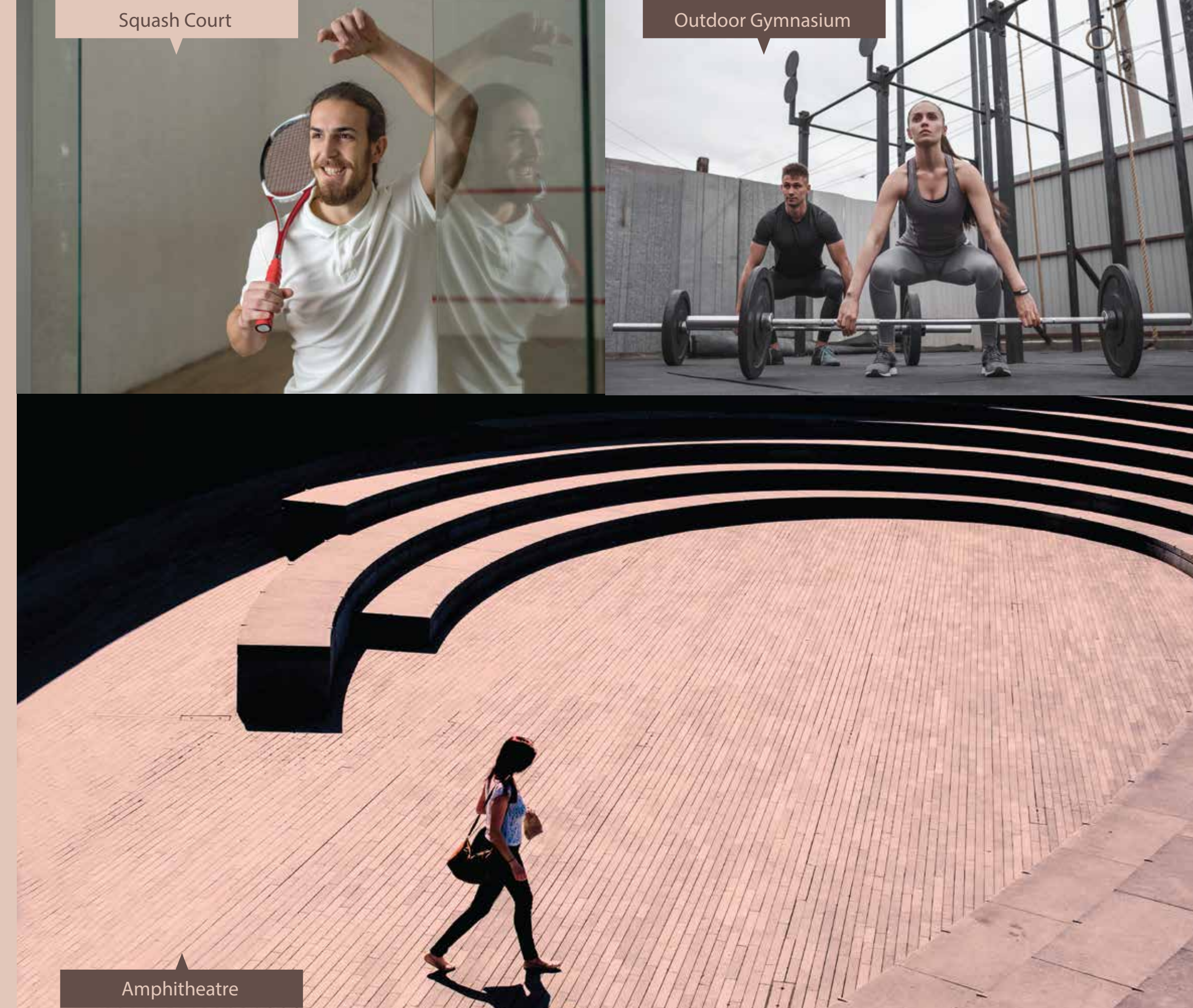
The Oxygen Clubhouse is designed in a way that everything springs to life from it. Themed as a floating lantern with koi pond, the clubhouse visually connects to the swimming pool that seamlessly merges into the infinity cascade. While the layers of greenery that surround you brings in a fresh dose of oxygen.

Oxygen Clubhouse:

- Exclusive clubhouse building on the podium floor
- Lobby/Reception
- Cafeteria
- Provision for Creche
- Squash Court
- Multipurpose Hall
- Board Games Room
- Gymnasium
- Indoor Games Room

Other Facilities:

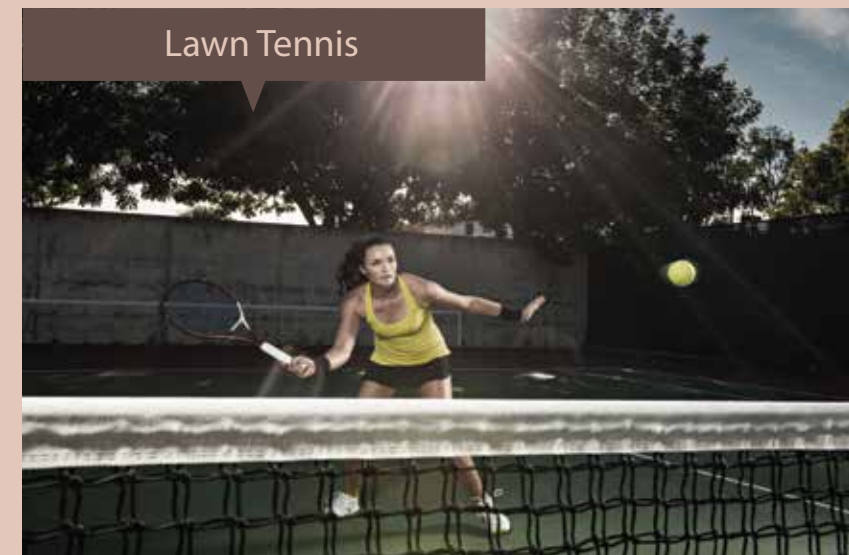
- Swimming Pool
- Children's Play Area
- Lawn Tennis Court
- Outdoor Gymnasium
- Meditation Deck
- Mini Forest & Pathway
- Amphitheatre
- Car Wash Point
- Car Charging Point
- Toilet for Drivers & Disabled
- Miniaturized (Half Basketball Court & Cricket Pitch)
- Manicured Gardens



Squash Court

Outdoor Gymnasium

Amphitheatre



Amenities>>



Mini Forest & Pathway

Smart Master Plan.

On Spot>>

Legend

- | | | | |
|----|-------------------|----|---------------------------------|
| 1 | Entrance/Exit | 14 | Tree Court |
| 2 | Entrance/Exit | 15 | Meditation Pavilion |
| 3 | Tower Entrance | 16 | Step Planters |
| 4 | Fire Driveway | 17 | Tennis Court |
| 5 | Pathway | 18 | Cricket Practice Half Pitch |
| 6 | Visitor's Parking | 19 | Half Basketball Court |
| 7 | Swimming Pool | 20 | Gathering Plaza |
| 8 | Water Deck | 21 | Urban Mini Forest with Pathways |
| 9 | Amphitheatre | 22 | Sky Garden |
| 10 | Playbox | 23 | Civic Amenities Area |
| 11 | Seating Plaza | 24 | Services Area |
| 12 | Kid's Play Area | 25 | Services Area |
| 13 | Outdoor Gym | 26 | Existing Nala |



Buildings, amenities and facilities will be developed in a phased manner. Master plan is a digital rendering of all phases post completion.

Live Seamlessly.

- Located off Bellary Road (Bangalore-Hyderabad Highway Near Yelahanka Airforce Station)
- Close to the Bengaluru International Airport
- Hebbal Flyover (just 15 minutes away)

Tech Parks/SEZs

- Manyata Tech Park
- Kirloskar Tech Park
- L & T Tech Park
- Ecopolis SEZ
- North Gate SEZ
- & many more

Other landmarks include:

Schools and Colleges

- Canadian International School
- Stonehill International School
- Mallya Aditi International School
- Sri M Visvesvaraya Institute of Technology
- Vidyashilp Academy

Medical Facilities

- Columbia Asia Hospital, Hebbal
- Aster CMI
- Cytecancer Cancer Hospital

Shopping

- Decathlon
- Galleria Mall
- Proposed Phoenix Mall

Star Hotels & Resorts

- Taj Hotels
- Clarks Exotica
- Angsana Oasis Spa & Resorts
- Courtyard by Marriott



North Bangalore
Advantages>>

TYPICAL UNIT PLANS



Indicative Saleable Area	~1200 Sq ft
Indicative Carpet Area	~815 Sq ft
Indicative Usable Area	~ 860 Sq ft

AREA	SIZE
Foyer	2'-1" x 3'-11"
Living	14'-0" x 15'-6"
Dining	10'-0" x 8'-10"
Kitchen	10'-0" x 7'-0"
Utility	4'-0" x 6'-5"
Sit-Out / Balcony	4'-6" x 8'-6"
Master Bedroom	12'-0"x 15' -0"
Master Toilet	5'-0" x 8'-0"
Bedroom 1	12'-6" x 10'-0"
Toilet 1	4'-6" x 8'-0"

2 BHK GRAND



Indicative Saleable Area	~1280 Sq ft
Indicative Carpet Area	~860 Sq ft
Indicative Usable Area	~915 Sq ft

AREA	SIZE
Foyer	7'-9" x 3'-11"
Living	15'-6" x 16'-0"
Dining	8'-6" x 10'-0"
Kitchen	7'-0" x 10'-0"
Utility	6'-5" x 4'-0"
Sit-Out / Balcony	8'-6"x 9'-5", 11'- 0"x 3'-6"
Master Bedroom	14'-11"x 11' -11"
Master Toilet	8'-0" x 5'-0"
Bedroom 1	10'-0" x 12'-5"
Toilet 1	8'-0" x 4'-6"

3 BHK COMFORT



Indicative Saleable Area	~1500 Sq ft
Indicative Carpet Area	~1025 Sq ft
Indicative Usable Area	~1085 Sq ft

AREA	SIZE
Foyer	4'-6" x 6'-0"
Living	14'-7" x 16'-0"
Dining	10'-0" x 9'-0"
Kitchen	10'-0" x 7'-0"
Utility	4' -0 " x 6' - 5"
Sit-Out / Balcony	9'-5"x 9'-0" 4'-11"x 7'-6"
Master Bedroom	15'-0" x 12'- 0" 5'-8"X5'-5" (foyer)
Master Toilet	8'-0" x 6' -0"
Bedroom 1	10'-0" x 13'-0"
Toilet 1	5'-0" x 8' -0"
Powder Toilet	4'-6" x 6' -0"
Bedroom 2	10'-0" x 8'-0" (study)

Furniture, fixtures or fittings shown in the floor plan are not standard and will not be provided in the apartment. Areas mentioned herein are approximate and shall vary based on selected apartment. Not all apartments will have extended balcony as shown and will depend on the unit selected. Floor plans are in accordance with the latest approved sanctioned plan and are subject to changes mandated by government authorities and/or applicable laws from time to time.

Furniture, fixtures or fittings shown in the floor plan are not standard and will not be provided in the apartment. Areas mentioned herein are approximate and shall vary based on selected apartment. Not all apartments will have extended balcony as shown and will depend on the unit selected. Floor plans are in accordance with the latest approved sanctioned plan and are subject to changes mandated by government authorities and/or applicable laws from time to time.

3 BHK GRAND



Indicative Saleable Area	~1710 Sq ft
Indicative Carpet Area	~1175 Sq ft
Indicative Usable Area	~1230 Sq ft

AREA	SIZE
Foyer	4'-6" x 6'-0"
Living	18'-0" x 17'- 0"
Dining	11'-0" x 10'-0"
Kitchen	11'-0" x 7'-0"
Utility	5'-6" x 6'-5"
Sit-Out / Balcony	6'-0" x 10'-0"
Master Bedroom	12'-0" x 15'-0"
Master Toilet	6'-0" x 8'-0"
Walk in Wardrobe	6'-0" x 6'-5"
Bedroom 1	10'-6" x 10'-0"
Toilet 1	5'-0" x 8'-0"
Bedroom 2	12'-0" x 10'-0"
Toilet 2	8'-0" x 5'-0"

Furniture, fixtures or fittings shown in the floor plan are not standard and will not be provided in the apartment. Areas mentioned herein are approximate and shall vary based on selected apartment. Floor plans are in accordance with the latest approved sanctioned plan and are subject to changes mandated by government authorities and/or applicable laws from time to time.

3 BHK LUXE



Indicative Saleable Area	~1800 Sq ft
Indicative Carpet Area	~1195 Sq ft
Indicative Usable Area	~1290 Sq ft

AREA	SIZE
Foyer	4'-6" x 6'-0"
Living	18'-0" x 17'- 0"
Dining	11'-0" x 10'-0"
Kitchen	11'-0" x 7'-0"
Utility	5'-6" x 6'-5"
Sit-Out / Balcony	10'-11" x 10'-0" 4'-11"x 11'-1"
Master Bedroom	12'-0" x 15'-0"
Master Toilet	6'-0" x 8'-0"
Walk in Wardrobe	6'-0" x 6'-5"
Bedroom 1	10'-6" x 10'-0"
Toilet 1	5'-0" x 8'-0"
Bedroom 2	12'-0" x 10'-0"
Toilet 2	8'-0" x 5'-0"

Furniture, fixtures or fittings shown in the floor plan are not standard and will not be provided in the apartment. Areas mentioned herein are approximate and shall vary based on selected apartment. Not all apartments will have extended balcony as shown and will depend on the unit selected. Floor plans are in accordance with the latest approved sanctioned plan and are subject to changes mandated by government authorities and/or applicable laws from time to time.



Puravankara

India's Most
Trusted Developer.
Now also, one of
India's Smartest
Developer.

With over 43 years of experience in real estate, Puravankara is today amongst the top 4 developers in India. A credo of uncompromising values, customer centricity, robust engineering, and transparent business operations, has earned Puravankara many accolades from customers and the public at large. Also popular for it's unique conceptualizing sensibilities. And now has 23,000 happy customers.

<<Developer



What Exactly Does the **BluNex** Life Offer?



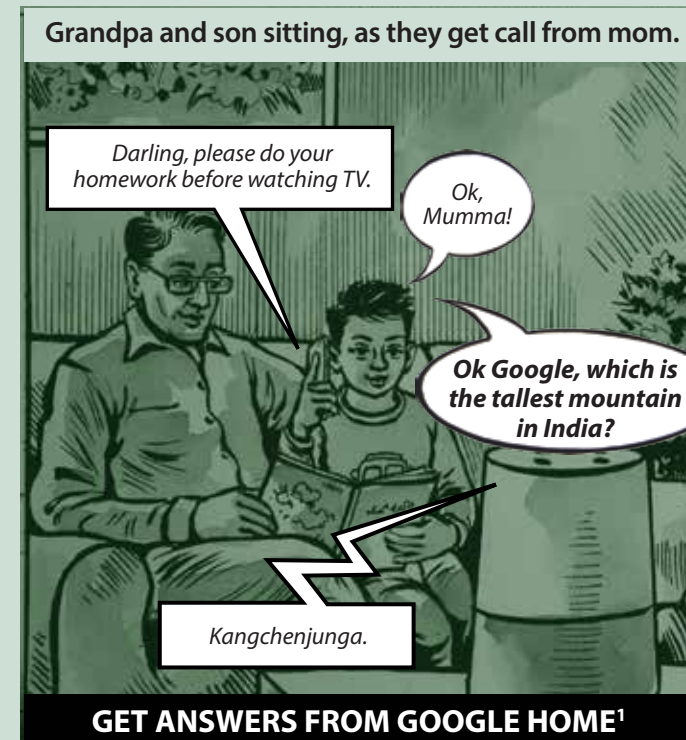
Google Home



Wife opens door lock.



BIOMETRIC DOOR LOCK



GET ANSWERS FROM GOOGLE HOME¹

Wife enters home and light gets on.



MOTION SENSING LIGHTS IN FOYER



INTELLIGENT LIGHTING AND COOLING SETTINGS, VOICE CONTROLLED VIA GOOGLE HOME²

Product depictions are for illustration purpose only. Actual product may vary. The user interface on the BluNex app and on other home automation devices including the Google Home may change with time. Kindly read the terms, conditions & relevant disclaimers pertaining to BluNex Life Package, mentioned in the penultimate page of this brochure. ¹Requires Wi-Fi, a nearby electrical outlet and compatible devices. ²Shortcut queries require prior setup through the Google Home app.

Cooking in Kitchen.

Ok Google, give me the recipe for Thai Green Curry.

Okay, I've got a recipe called Real Vegan Thai Green Curry.

ASK GOOGLE HOME FOR RECIPES¹

Returns from work for an evening with the family.

Hi Priya... I'm home!

Ok Google. Play Jazz music.

playing Jazz music

PLAY MUSIC HANDS-FREE WITH GOOGLE HOME²

Family enjoying entertainment together with content streamed on TV using Google Chromecast.

Ok Google, Cast cartoons from YouTube on Bedroom TV.

USE YOUR VOICE TO CAST CONTENT ON TV WITH GOOGLE HOME³

Wife gets thirsty and drinks water in a glass, right from the tap.

DRINKING WATER OFF THE TAP

Getting ready to sleep/retire for the day.

!!Light turns Off!!

Ok Google Good night!

!!AC turns On!!

ONE VOICE COMMAND FOR MULTIPLE ACTIONS SET UP ON GOOGLE HOME⁴

Night time. Wife asks Google Home.

Ok Google, Set AC Temperature to 22 degrees.

Setting AC Temperature to 22 degrees.

BE IT ANYTIME, GOOGLE HOME IS THERE FOR YOU¹

Morning alarm rings, ask your Google Home.

!!Light turns on!!
!!Curtains open!!

OK Google, Good Morning.

ONE VOICE COMMAND FOR MULTIPLE ACTIONS SET UP ON GOOGLE HOME¹

Lazing on bed. Maid ringing bell appears on phone.

Didi, Good morning.

AUTOMATED SECURITY FEATURES

Husband shaving. Phone rings. Boss's message appears on phone.

Mail me that document asap!

Mail sent!

I love my BluNex home!

WI-FI BOOSTERS FOR A STRONG SIGNAL

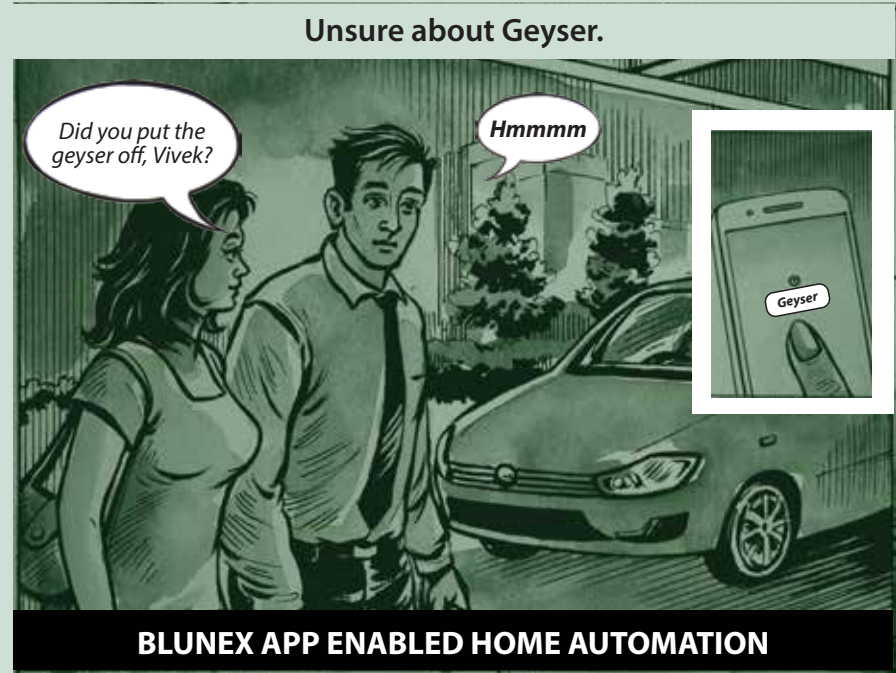
Running on treadmill at the gym in the oxygen clubhouse.

Wow! I've outdone myself today! Three cheers to me!

OXYGEN CLUB

Product depictions are for illustration purpose only. Actual product may vary. The user interface on the BluNex app and on other home automation devices including the Google Home may change with time. Kindly read the terms, conditions & relevant disclaimers pertaining to BluNex Life Package, mentioned in the penultimate page of this brochure. ¹The recipe provided is not original to Google and is provided basis top Google search results. ²May require subscriptions. ³Requires Wi-Fi, a nearby electrical outlet and compatible devices. ⁴Shortcut queries require prior setup through the Google Home app.

Product depictions are for illustration purpose only. Actual product may vary. The user interface on the BluNex app and on other home automation devices including the Google Home may change with time. Kindly read the terms, conditions & relevant disclaimers pertaining to BluNex Life Package, mentioned in the penultimate page of this brochure. ¹Requires Wi-Fi, a nearby electrical outlet and compatible devices. ²Shortcut queries require prior setup through the Google Home app.



Terms & Conditions

I/We understand that all features offered by the developer under the BluNex Life Package is an optional upgrade which comes at an additional cost for the Home Owners. However as an inaugural promotional plan, the developer is offering the BluNex Life Package complementary to all purchasers of this project. The developer has appointed a specialised home automation vendor/s and such other vendors as may be required for the installation of BluNex. The installation of BluNex Life Package and integration of the same with the relevant smart appliances of the Home Owner shall be done post the Home Owners taking possession of their home. Most of the features of BluNex Life Package are technology based and I/We understand that the operation of the same shall require smart appliances/devices/fixtures, paid subscriptions to service providers, potential modifications, power, wi-fi connectivity and such things/services as may be required to customise the installation to the special situation that a home may demand, all of which may be at an additional cost to the Home Owner. I/We understand further that Technology/Technology Vendor evolve at a rapid pace with possibilities of redundancies and possibilities of non-compatibility of some or all of the features/devices of BluNex Life Package with some or all of the Home appliances owned by the Home Owner, in which case the Home Owner may need to upgrade their home appliances/devices/fixtures to take advantage of the offerings under the BluNex Life Package. I/We understand that the user interface on the BluNex app and on other home automation devices including the Google Home may change with time. I/We also understand all features, offerings, devices offered under the BluNex Life Package are beyond the Standard Specifications offered by the developer and hence the developer is precluded from any defect period liability on the same. Google and Google Home are trademarks of Google LLC. I/We understand that a detailed note of all specifications that come as part of the BluNex Life package shall be intimated to all Home Owners independently.

PURAVANKARA®

Puravankara Limited, 130/1, Ulsoor Road, Bangalore – 560042

The images used are only indicative



Call: +91 - 80 – 44 55 55 55 / 1860 208 0000 Web: www.puravankara.com Mail: sales@puravankara.com

The imagery used in the brochure is indicative of style only. The photographs of the interiors, surrounding views and location may have been digitally enhanced or altered and do not represent actual or surrounding views. Standard fittings and finishes are subject to availability and vendor discretion. The images shown in the brochure are not standard and will not be provided as a part of an apartment. The information contained herein is believed to be true but not guaranteed. The colours of the buildings are indicative. This is a reference document intended only to provide generic information and does not constitute an offer or contract. **RERA No.: PRM/KA/RERA/1251/309/PR/190129/002311.**
For details, visit <https://rera.karnataka.gov.in>