

The background of the slide is a lush, green tropical forest scene with various plants and trees, partially obscured by a light, hazy overlay.

*ekana*  
*Antalya*  
*Dynamic Living Environment*

# *Antalya Facade*







*ekimusa*  
*Ananya*  
*Dynamic Living Environment*

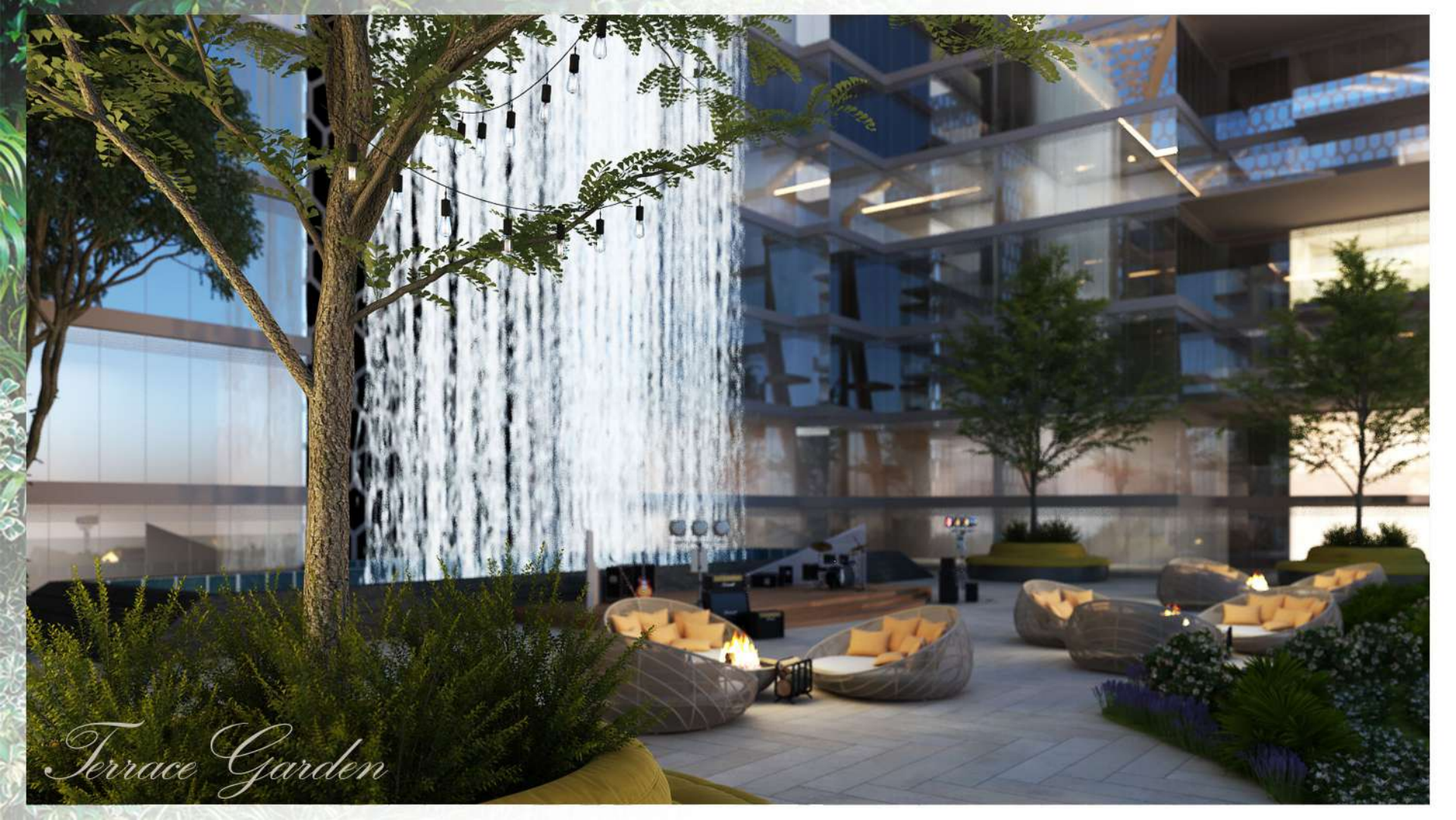
*Grand Entrance*





*Terrace View*





*Terrace Garden*



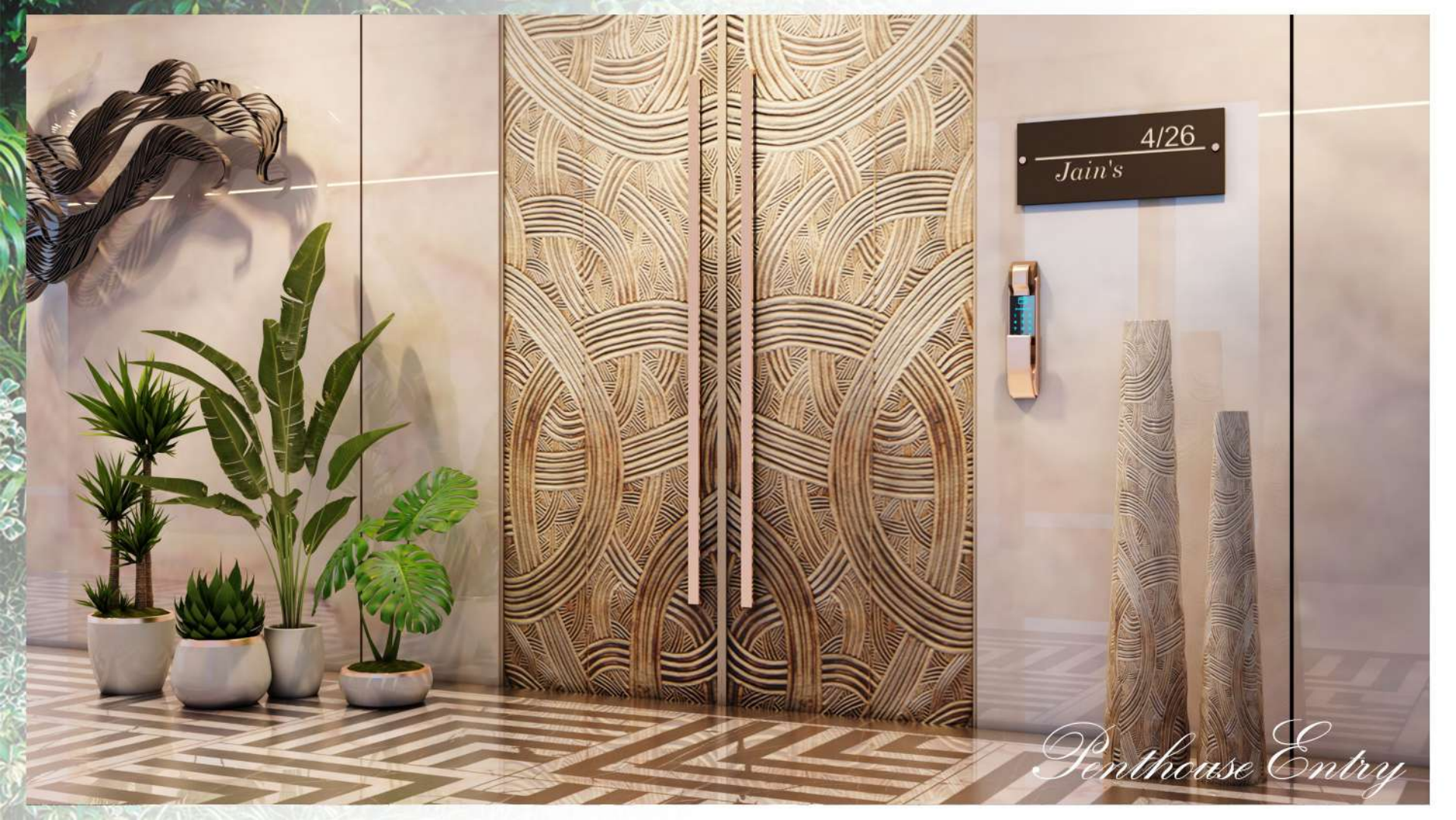
*Bedroom View*





*Drop Off*





4/26  
Jain's



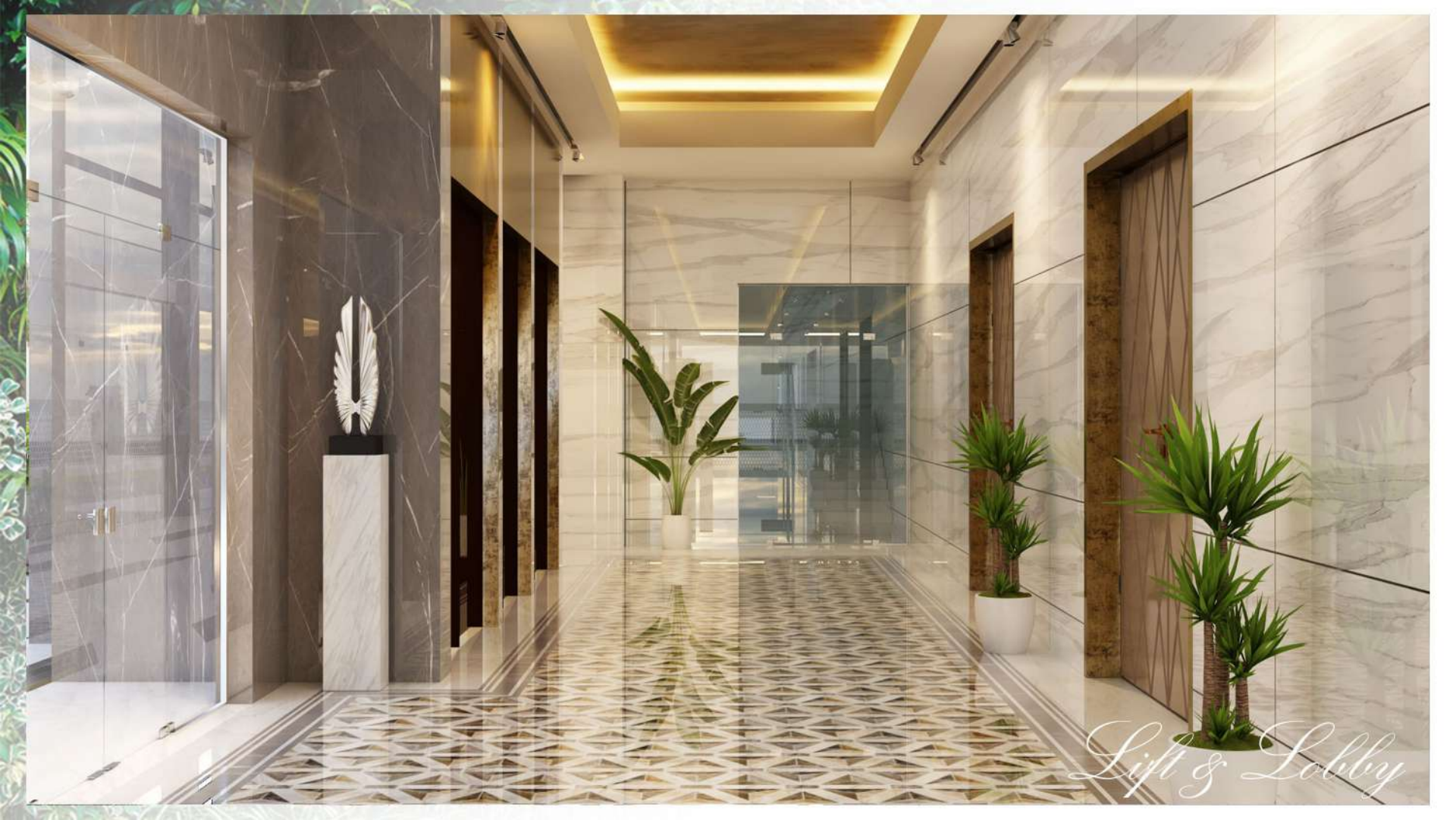
*Penthouse Entry*





*Kitchen*





*Lift & Lobby*





*Living Room & Lounge*





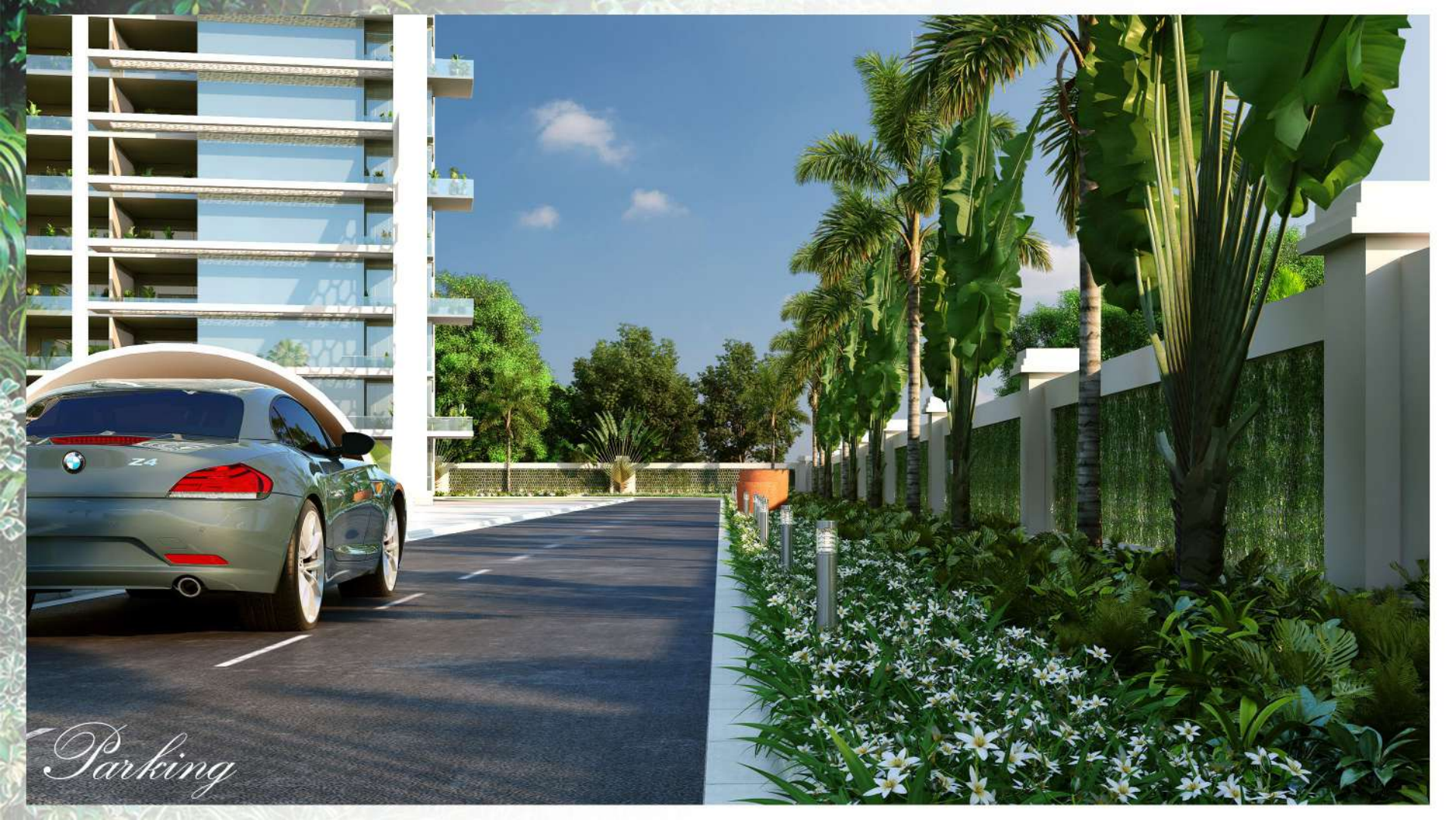
*Living Room & Lounge*





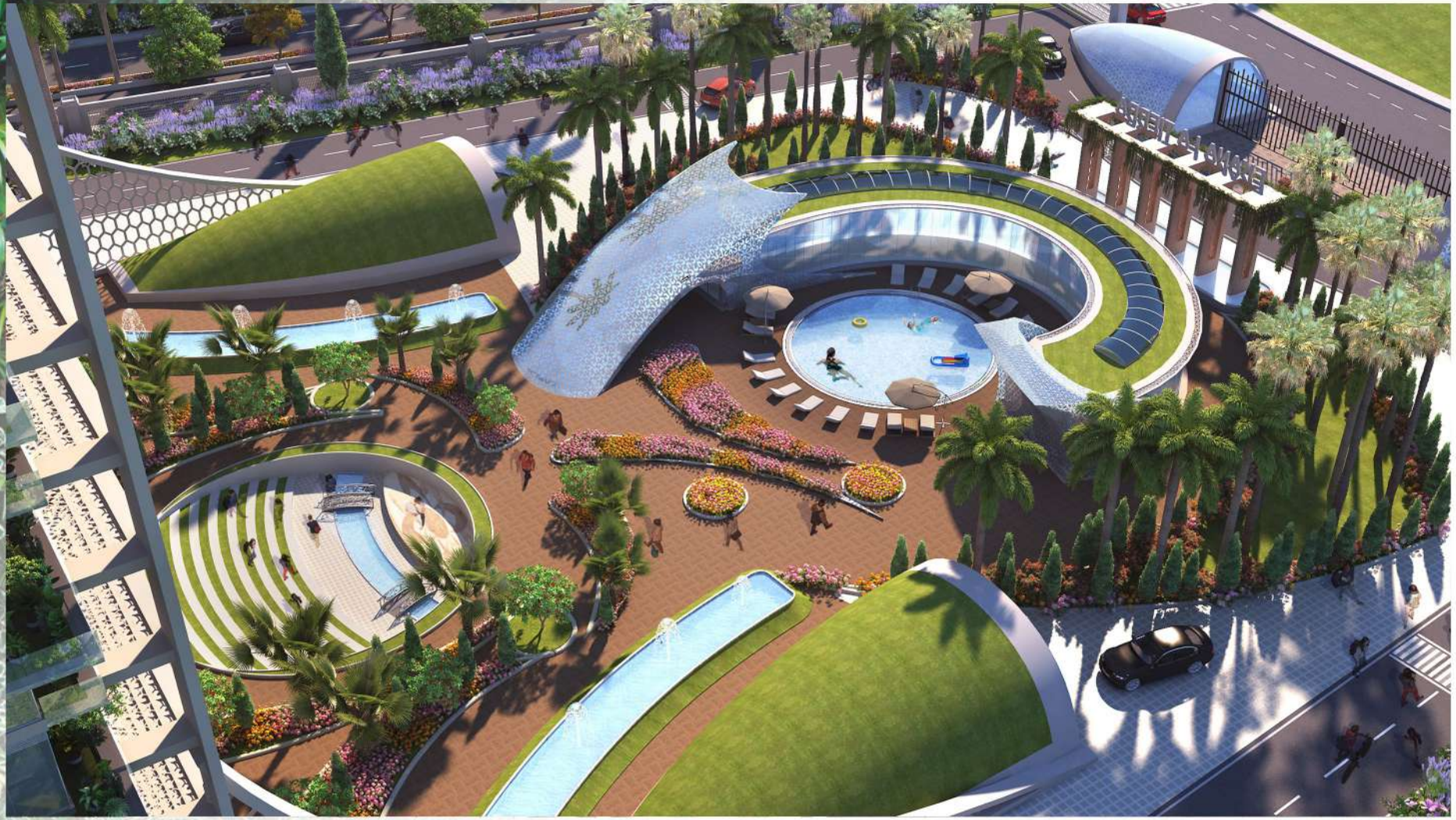
*Lounge & Reception*



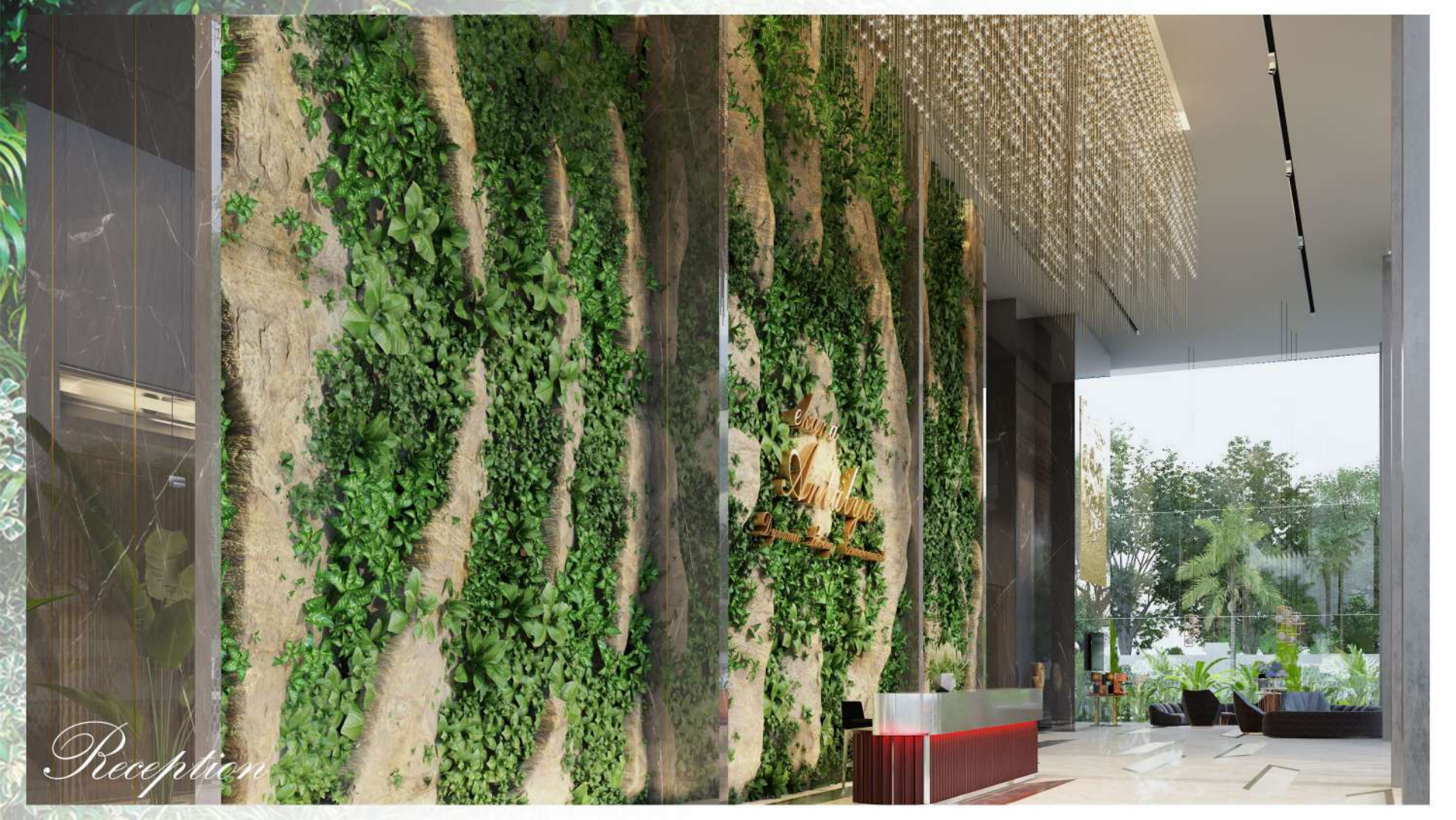


*Parking*









*Reception*





*Ekana Antalya is in Gomti Nagar Extension Lucknow. Total number of floors is 33. This Apartment is available for Rs1.98Cr. This modern unit has a built-up area of 3700 Square feet. Ekana Antalya has a good view and is North-East-facing. There are 4 bedrooms and 5 bathroom with servant room. Lift is available in this Apartment.*



The background of the slide is a lush, green tropical forest scene. It features various types of plants, including palm trees with long, feathery fronds and other dense foliage. The lighting is soft and natural, creating a serene and vibrant atmosphere. The text is overlaid on the right side of this background.

# *Distances*

International Airport - 20 minutes

Medanta Hospital - 10 minutes

LuLu Mall - 10 minutes

Ekana Int. Stadium - 02 minutes

Phoenix Palassio - 02 minutes





# *Site Address*

Sector 7, Ekana Sportz City,  
Gomti Nagar Extension, Lucknow Uttar Pradesh



*Authorised Channel Partner*



[www.vinsrealtors.com](http://www.vinsrealtors.com) | [www.ekanaantalya.in](http://www.ekanaantalya.in)