



A Navratna CPSE

www.nbccindia.gov.in



NBCC Heights

SECTOR 89, PATAUDI ROAD, GURGAON, HARYANA



NBCC was incorporated as a Public Limited Company in November, 1960, as a wholly owned Government of India Enterprise under the aegis of the Ministry of Urban Development. Beginning with a turnover of ₹. 52,000, the Corporation, over the years, achieved many milestones in its operation and has posted a turnover of ₹. 4,621 crore as on March 31, 2015. It is a listed company now with BSE & NSE.

AUTHORISED CAPITAL

The authorized and paid-up capital of the Corporation stand at Rs. 120 crore.

NBCC has obtained ISO 9001 Certificate for its Project Management & Consultancy Divisions. The Corporate Mission Inter alia enshrines building a high degree of customer satisfaction and providing services conforming to ISO 9001 : 2008 series.

PERFORMANCE RECOGNITION

Consistently excellent performance of NBCC over the last many years has earned it many milestones and recognitions from the Government as well other important quarters. These recognitions include: A Navratna CPSE Status and one among top ten CPSUs, winning of CSR award from HE President of India, winning excellent awards from hon'ble Prime Minister of India, third most profitable Construction company award etc.

As recognition of NBCC's remarkable performance and significant contribution in national development, the company has recently been conferred with a series of awards amongst which the much coveted are Golden Peacock Award 2013 in Occupational Health & Safety, prestigious India Green Building Council Award 2013; The special Jury Governance Now PSU Award 2013, The popular Real Estate Company of the year and last but not the least, Best Group Housing Project - Affordable Segment for Khekra (UP) Project.



Disclaimer : Visual representations shown in the brochure, application form or else where are purely conceptual and has no legal sanctity and is not a legal offering. All building plans, specifications, area, layout plans etc. shown in the brochure are provisional and are subject to change by the company & sanctioning / statutory authorities.
1 sqm = 10.764 sft. (Conversion Ratio for measurement)

NBCC has obtained

ISO 9001:2008 Certificate

for its Consultancy &

Project Management Divisions.



SITE Location

**NBCC HEIGHTS Sector 89, Pataudi Road, Gurgaon, Haryana,
Land Area 11.312 acres.**

**The Licence No. 04 of 2009 dated 13. 2. 2009 was transferred in
favour of National Buildings Construction Corporation Limited
vide Endst. No. 5 DP-V-LC-1751/2010/2623 dated 3. 3. 2010 by
Director Town & Country Planning, Haryana.**

**Director Town & Country Planning, Haryana has approved the
building plan/permission for construction of group housing
colony on this Plot Vide Letter No. ZP-537/JN(NK)/2010/18048
dated 28. 12. 2010.**

FEATURES

- Located on Main Pataudi Road, Sector-89, Gurgaon.
- 75m wide Approach Road (Pataudi Road) with 18m wide Green Belt & 12m wide Service Road.
- Easily Approachable from National Highway 8 & Dwarka Expressway.
- Earthquake Resistant Structure.
- Rain Water Harvesting, Fire Safety Compliant etc.
- Greens view facing & open areas.
- Large family lounge for versatile Living and Dining.
- Gated community.
- Convenient Shops for Residents, Nursery School.
- High speed Elevators, Dedicated Car Parking for each Apartment.
- Community Center with Multi Purpose Hall.
- Swimming Pool.



PROPOSED SPECIFICATIONS :

Structure:	RCC Framed Structure
Furnishing :	
Living /Dining /Bed Rooms	Vitrified Tile Flooring
Kitchen	Anti-skid Ceramic Floor Tiles / Counter - Udaipur Green Marble Topping & Fascia
Toilets	Anti-skid Ceramic Floor Tiles
Balcony	Anti-skid Ceramic Floor Tiles
Staircase	Precast Cement Concrete Designer Tiles, Teak Wood Hand Rail with MS Balusters
Common Corridor / Stilt Area & Basement / Lift Lobby	Kota Stone Flooring / Cement Concrete Flooring with Metallic Hardener / Marble Flooring at Ground Floor & Anti-skid Ceramic tiles at other Floors
Door Frames	Wooden Frames (Hard wood)
Door Shutters	Main Door: Flush Door Shutter, one side Laminate Finish, other side Painted with Synthetic Enamel All Internal Doors : 35mm thick Factory made Flush Doors Painted with Synthetic Enamel
External Doors / Windows	UPVC Frames & UPVC Glazed Shutters / Aluminium Shutters with frames
Internal Wall & Ceiling	Oil Bond Distemper (OBD) in apartments & White Wash in Basement over Plastered Surface
External	Acrylic Smooth exterior paint over Plastered Surface
Chinaware & CP Fittings	Standard ISI Mark
Electrical	Copper Wiring & Modular Switches

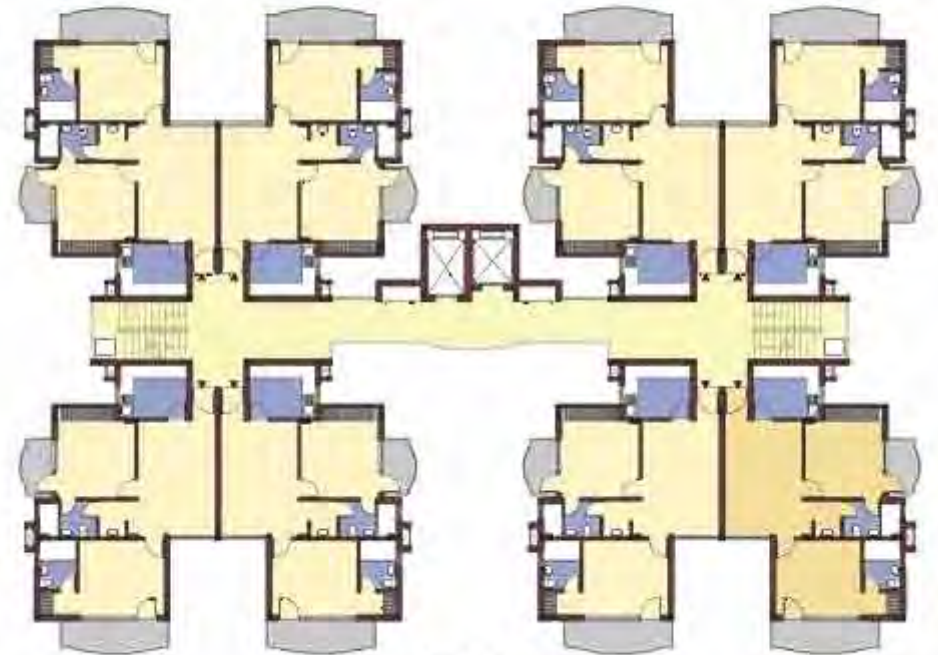
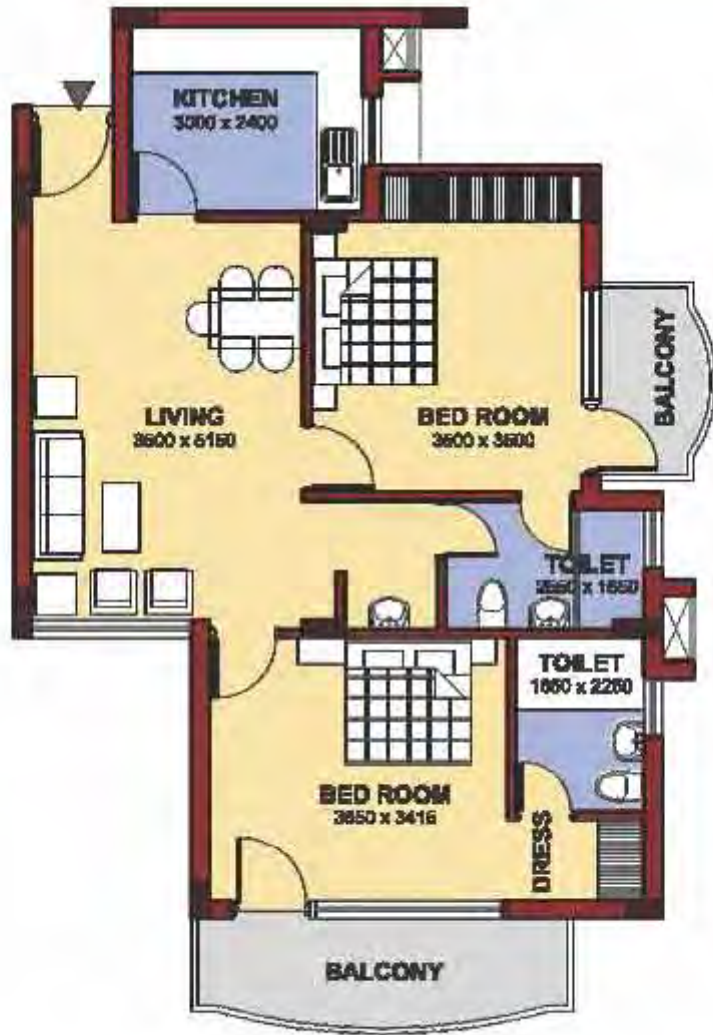


TYPE - I TWO BEDROOM - UNIT (2BHK)

Built-up Area i/c Balcony
Total Super Area (Approx)

916 sqft.
1,140 sqft.

Attached Parking Slots :
Car (Covered) 1
Car (Open) Nil
Scooter (Covered) 1



BLOCK - K

TYPE - II THREE BEDROOM • UNIT (3BHK)

Built-up Area i/c Balcony

1,470 sft.

Total Super Area (Appx)

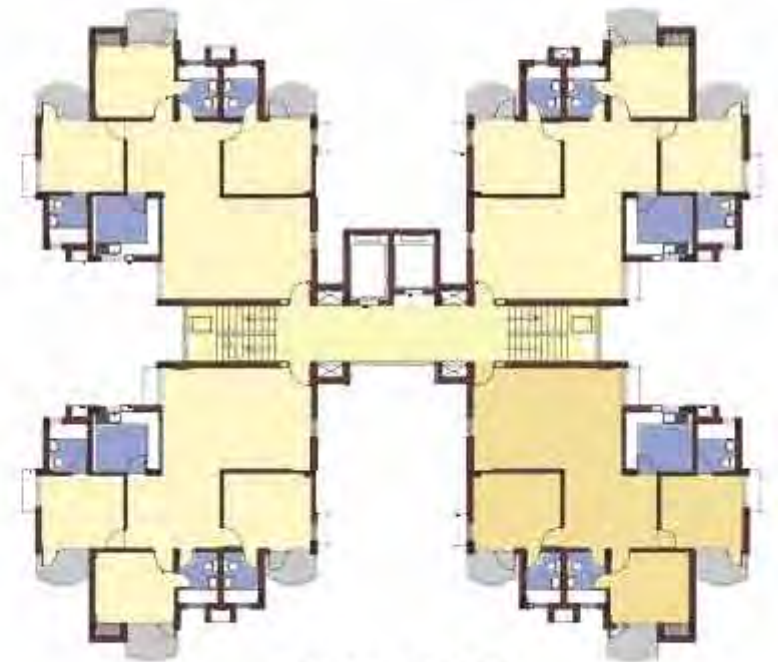
1,765 sft.

Attached Parking Slots :

Car (Covered) 1

Car (Open) Nil

Scooter (Covered) 1



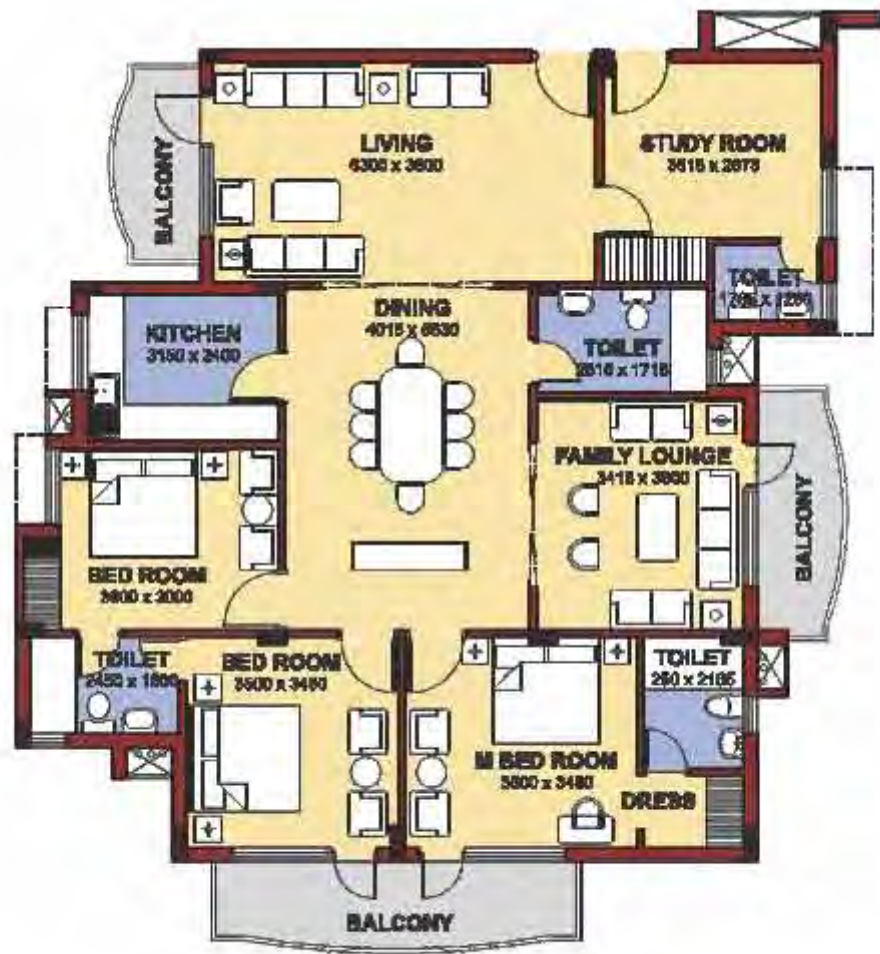
BLOCK - G, H & J

TYPE - III THREE BEDROOM + STUDY + UNIT (3BHK+5)

Built-up Area l/c Balcony	1,799 sq.ft.
Total Super Area (Approx)	2,125 sq.ft.

Attached Parking Slots :

Car (Covered)	1
Car (Open)	1
Scooter (Covered)	NIL



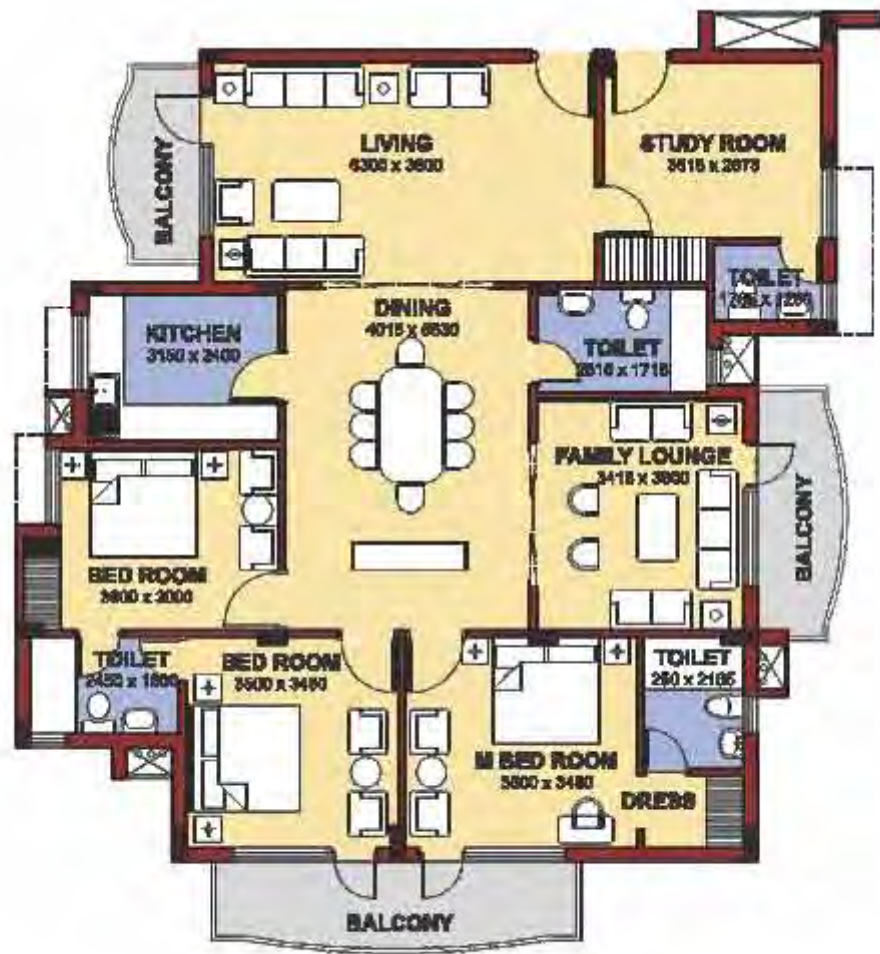
BLOCK - B & C

TYPE - IV THREE BEDROOM + STUDY + UNIT (3BHK+5)

Built-up Area l/c Balcony	1,799 sq.ft.
Total Super Area (Approx)	2,125 sq.ft.

Attached Parking Slots :

Car (Covered)	1
Car (Open)	1
Scooter (Covered)	1



BLOCK - A & D

TYPE - V FOUR BEDROOM + STUDY + UNIT (4BHK+S)

Built-up Area i/c Balcony

2,147 sq.ft.

Attached Parking Slots :

Total Super Area (Approx)

2,458 sq.ft.

Car (Covered) 1

Car (Open) 1

Scooter (Covered) Nil



BLOCK - F

TYPE - VI FOUR BEDROOM + SERVANT • UNIT (4BHK+S)

Built-up Area i/c Balcony

2,147 sft.

Attached Parking Slots :

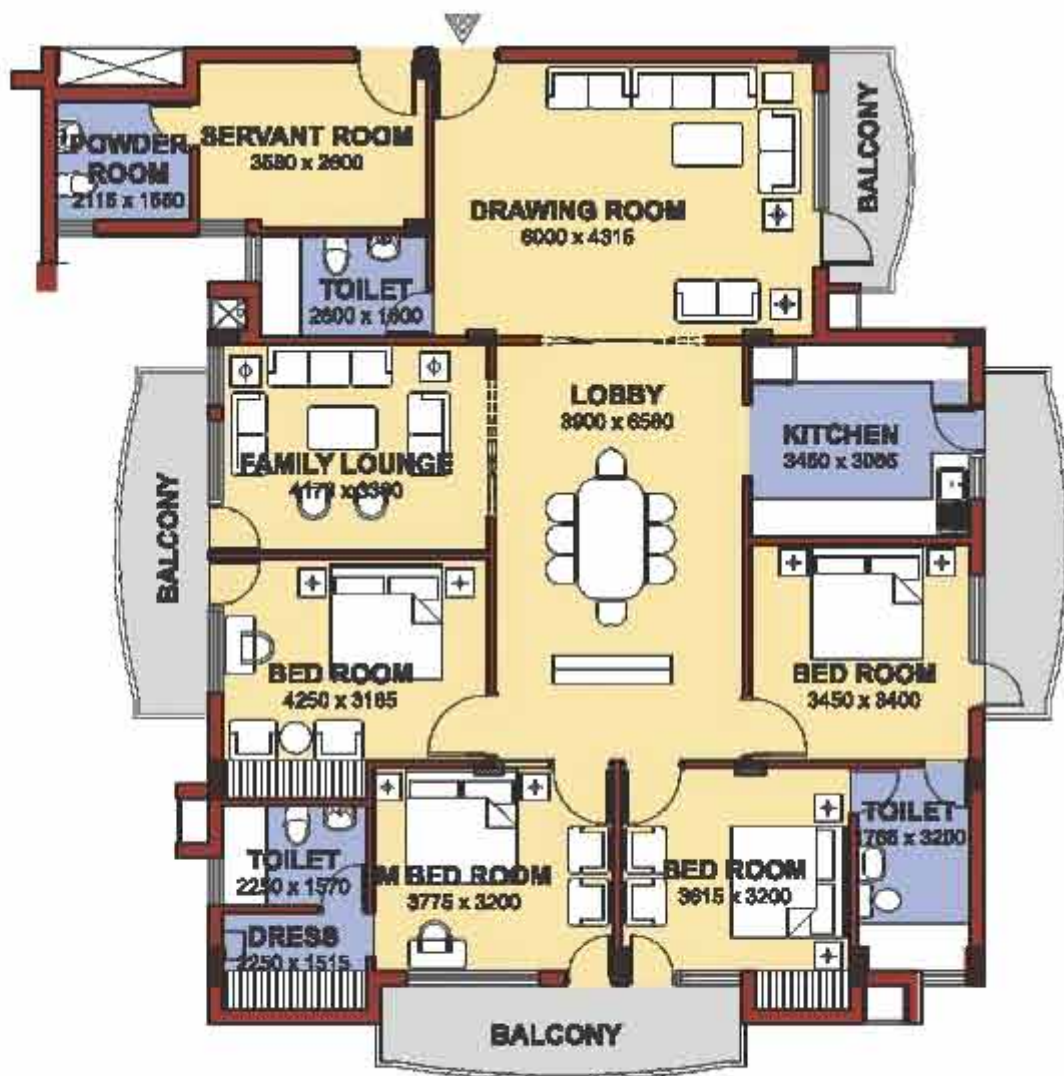
Total Super Area (Approx)

2,462 sft.

Car (Covered) 2

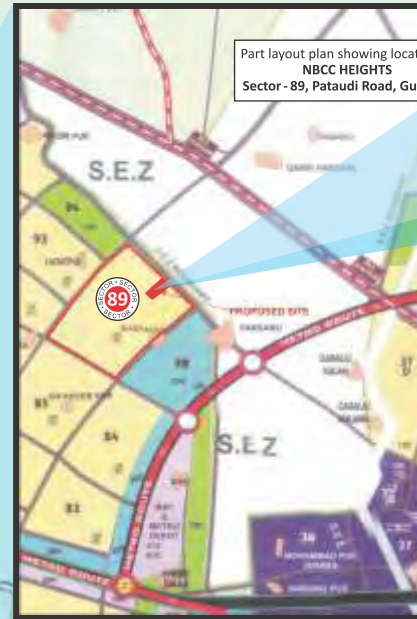
Car (Open) NIL

Scooter (Covered) 1



BLOCK - E

Location Map of Site



A Navratna CPSE

NATIONAL BUILDINGS CONSTRUCTION CORPORATION LIMITED

(A Government of India Enterprise)

Marketing Office : NBCC Place, Pragati Vihar, Bisham Pitamah Marg, New Delhi - 110003 • Telephone : 011 - 46990019/20

E-mail : mktgre.nbcc@nic.in • www.nbccindia.gov.in