



D L F S I L V E R O A K S

D L F Q U T A B E N C L A V E





FIRST NAMES ALWAYS HAVE THE LAST WORD.

THE FINEST ADDRESS SOUTH OF DELHI.

DLF Qutab Enclave, the first major property-development south of Delhi, is fast becoming the model township it was planned to be.

Today, it is the township of choice in the region. Being the largest, it has the advantage of the finest facilities.



FACILITIES TO MATCH THE BEST IN DELHI.

Take the DLF Gymkhana Club. A club that combines top-of-the-line sports and leisure facilities with restrained elegance, quite inimitably. Play a game of cards, hit a few cannons in the billiard room, or just relax in the bright and airy lobby. A few sets of tennis? A dip in a cool blue pool, followed by a long, tall drink? At the DLF Gymkhana, it's all laid out for you.

The DLF Qutab Plaza and the Shopping Mall will have establishments to serve all normal customer needs. Ingeniously conceived and thoughtfully executed, these commercial centres will set standards in the region.

Classes I to IV of Summerfields School are already functional, and higher classes will be introduced in due course. So that, your children's education is already well taken care of.

And that's not all. Telephones, bus services and security services are functional. And medical facilities and all other amenities associated with comfortable living will soon be part of DLF Qutab Enclave.



COME TO WHERE IT'S ALL HAPPENING.

Yes, it's all happening at DLF Qutab Enclave. The township is getting livelier every day. Several hundred families have already moved in and many more are moving in.

DLF Qutab Enclave. The most exclusive address south of Delhi. Make sure it's yours.







JUST BEYOND THE BORDER, IT'S SOMETHING LIKE NEVER BEFORE.

In DLF Qutab Enclave, something very special is taking shape. DLF Silver Oaks. Meticulously planned, in the inimitable DLF style. A dazzling complex that's going to put the others in the shade.

REDEFINING APARTMENTS. WITH STYLE.

The trouble with most apartments is that they're little more than walls connected by floors and ceilings. Little boxes, built with little imagination, and scarcely planned at all.

DLF Silver Oaks is a different story altogether. The design is a marvel in space utilisation. Airy and large drawing rooms with marble floors, and spacious bedrooms will set the tone. Naturally, the wall finish is plastic emulsion. The bathrooms will have high quality ceramic tiles. There'll be cable TV, and standby generators for the lifts and essential services. It's no less than you'd expect from the leader.

CLOSE. CLEAN. AND CLEAR.

The Qutab Minar is a short 15-minute drive, and the International Airport is even closer, just 10 minutes away. And the access roads are clean and uncongested. Whether it's the NH 8, or the Mehrauli-Gurgaon Road. Which means that DLF Qutab Enclave is not only green and open, but very close by, with excellent approach roads as well.

COME WHILE THE GOING'S GOOD.

Take the reputation of DLF. Add the facilities of DLF Qutab Enclave and its location. Finally, look at DLF Silver Oaks. At attention to detail and immaculate finish. If you're looking for an apartment, you couldn't start better.

Opportunity doesn't knock on the door every day. This time, make sure. Book your DLF Silver Oaks apartment today.



F U T U R A

SUPER BUILT-UP AREA

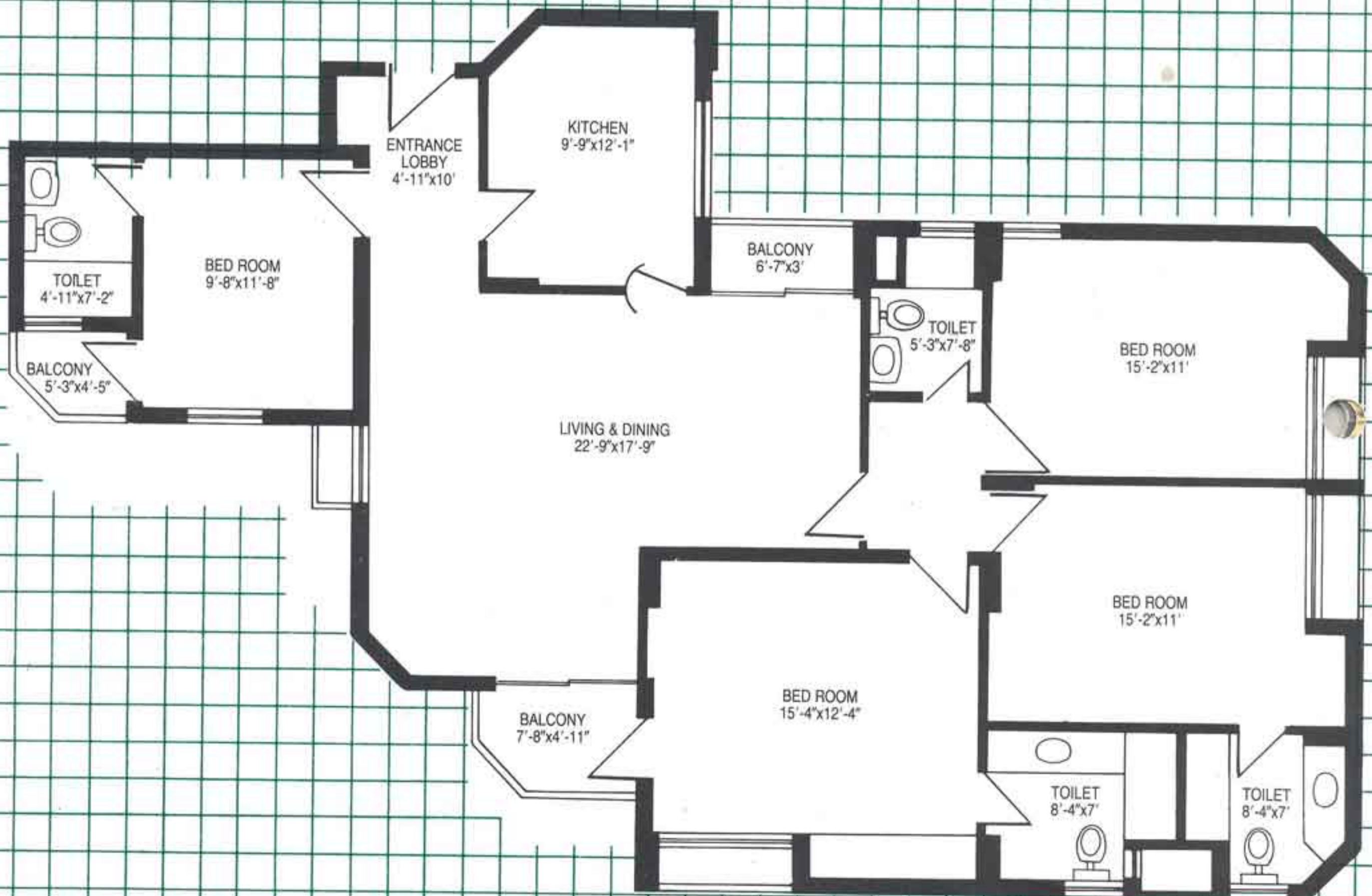
203.56 sq. mtr. (2191 sq. ft.) approx.

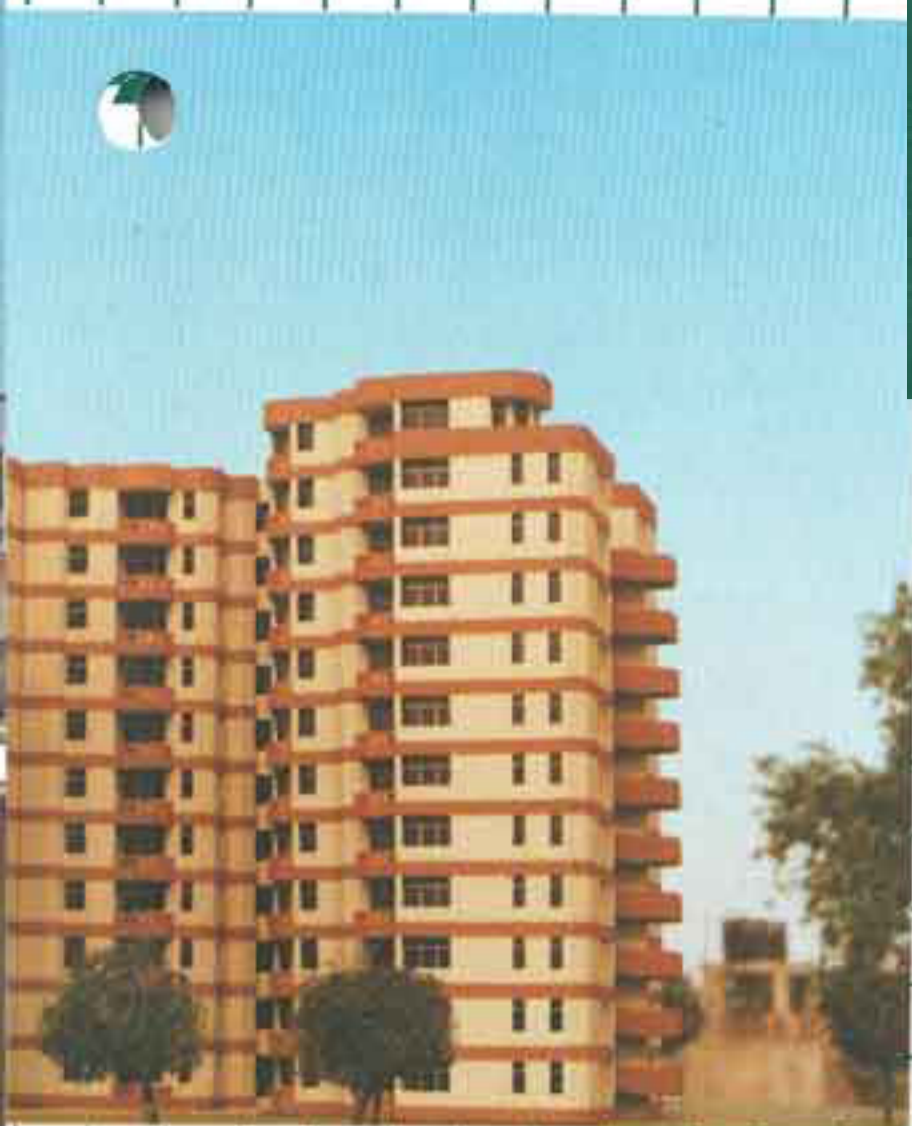
ACCOMMODATION

Living/dining,
four bedrooms with four toilets
and kitchen.

A R C H I T E C T S

Bose Brothers





O P T I M A

SUPER BUILT-UP AREA

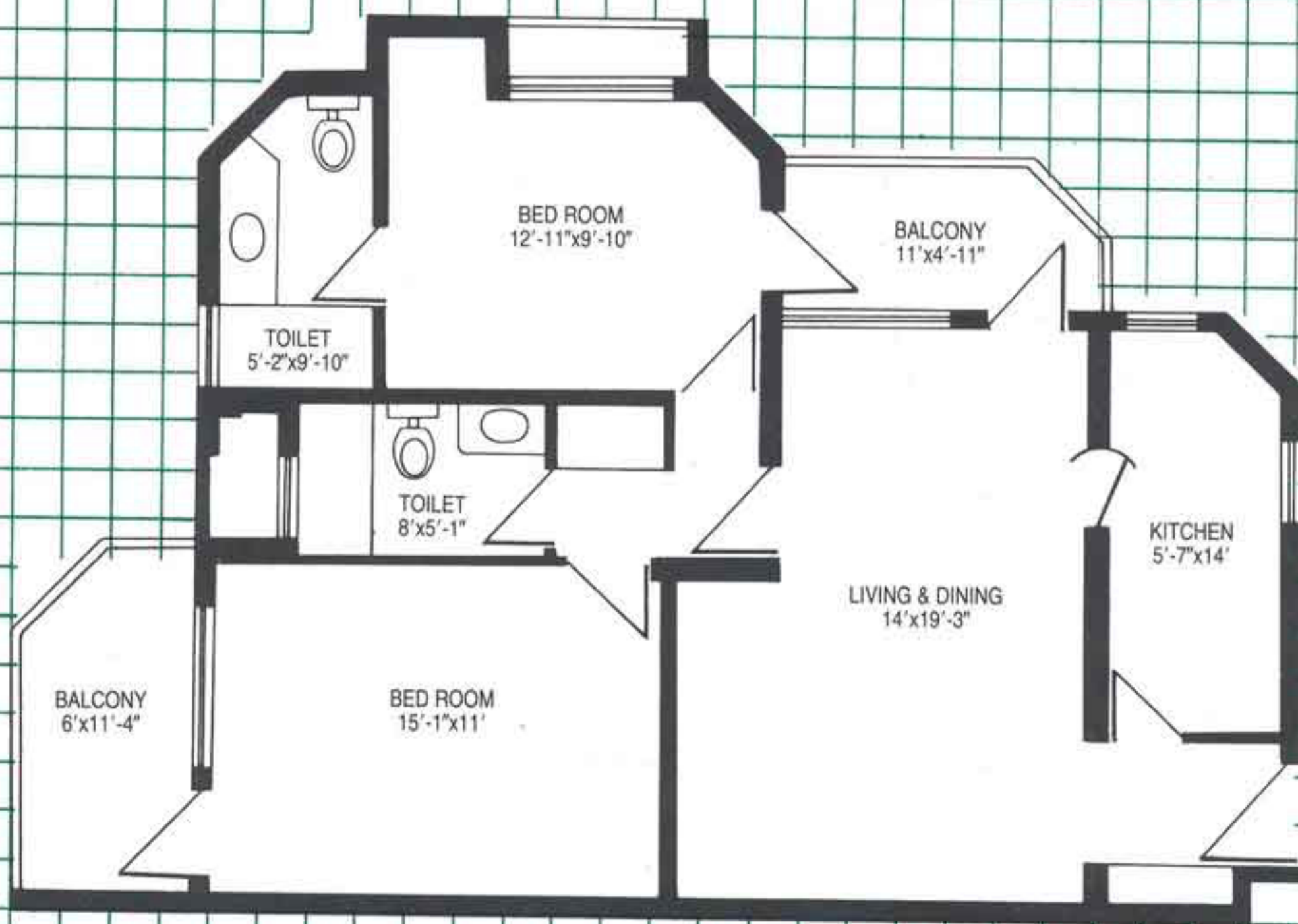
117.94 sq. mtr. (1270 sq. ft.) approx.

ACCOMMODATION

Living/dining, two bedrooms with two toilets and kitchen.

A R C H I T E C T S

Bose Brothers



**DLF
UNIVERSAL
LIMITED**