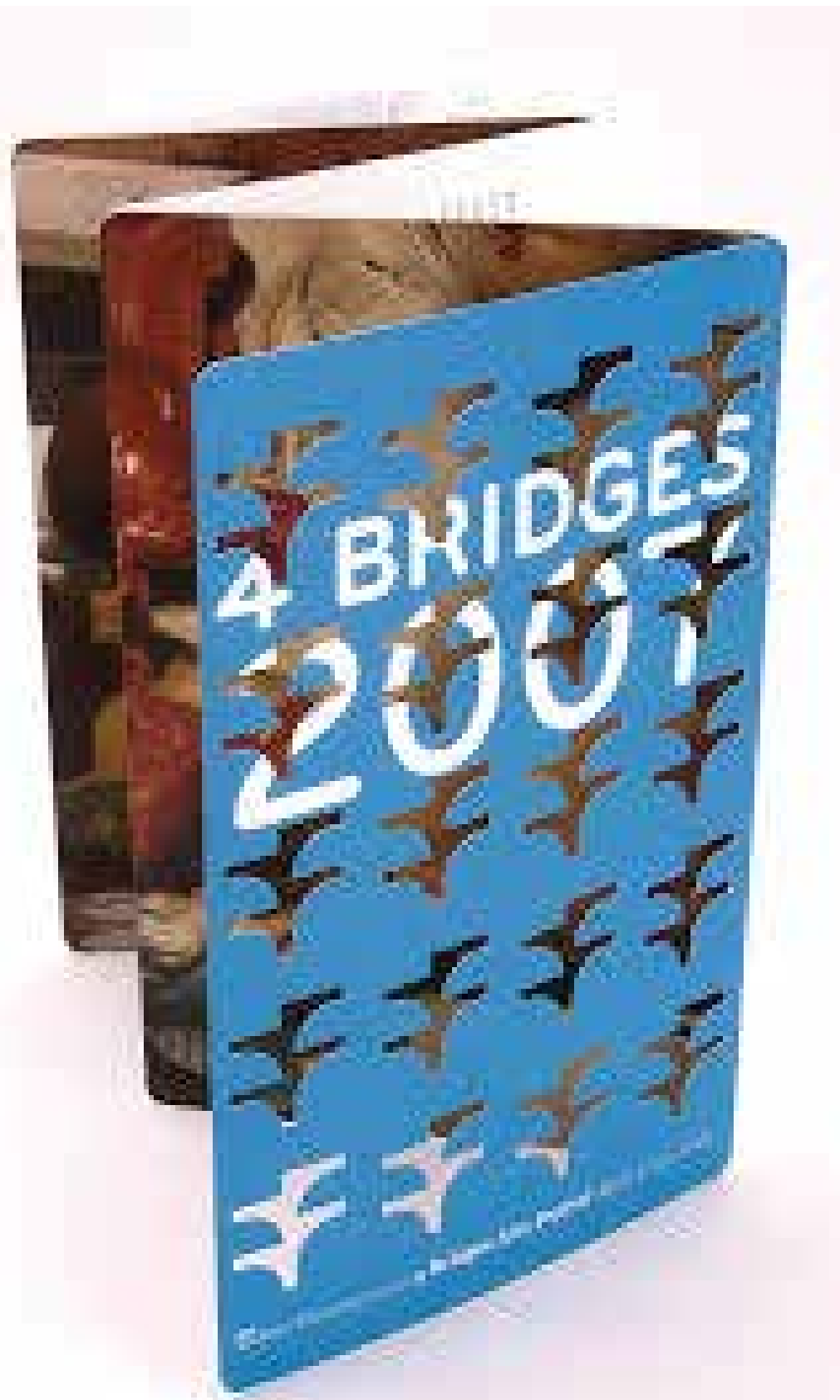


MAKE  
TIME  
FOR LIFE

CUTOUT COVER







OPTION 1



gettyimages®  
Ian Montgomery / EyeEm

OPTION 2



OPTION 3

**LIFE IS  
RIGHT HERE  
RIGHT NOW.**



**HILIFE**

The logo features the word "HILIFE" in a bold, green, sans-serif font. Above the letters "I" and "L" are three vertical bars of increasing height, each topped with a small red triangle, resembling a bar chart or a stylized mountain range. A thin vertical line is positioned to the left of the bars.

When was the last time you really enjoyed a proper dance session with the volume on high? When was the last time you didn't just run with your legs, but you ran with your heart? Or when was the last time you played hide and seek with your kids? When was the last time you sat down with your significant other and gazed at the stars?

When did you last feel being present in the now. Of accepting and fully enjoying the present moment. Being in the flow. In a current of inspiration.  
Last year? Last month?

Well, if you have to think hard, then you probably need a break. We'd suggest, you take a closer look at HiLife. Residences extraordinaire. Tall tower residences that provide you with ample opportunity every single day to live in a heightened sense of joy.

VTP Realty's brand new work-of-art have been specially designed to give you and every member of your family, maximum space so that all of you can embrace the happy moments of life more often.

And coupled with that are a host of amenities dotted around the campus that will make it a happening place.

With better design, better build and better care, we are confident that you will, once again, reconnect and embrace the magical moments.







# MAKE TIME FOR MORNINGS.

A bird sings not because it has to, but because it has a song.

Wake up to the sounds of the birds chirping. Open your windows and let the beauty of the nature greet you a good morning. And as you sip the finest Makaibari tea, water the plants.

A cool breeze will gently waft in through large bay windows and flow unconstrained through your entire residence.

Mornings at Hi-life really sounds perfect, doesn't it? And why wouldn't it, after all we have specially designed each and every apartment in such a way that you can experience the true essence of life, right here in Hi-Life.

Our architects have gotten rid of superfluous, unusable spaces and added them to the overall living area of the residence. The result? You get a feeling of large space even as there is a free flow of air and sunlight.

So, there's ample space should your daughter decide to give an impromptu Bharatnatyam performance. Or your son wants to test out the speed of his new hoverboard, thanks to minimum passages inside the rooms.

Since, we prioritized ergonomics and furniture layouts, your furniture will fit in neatly in well-created corners. Every area of the apartment has been thoughtfully appraised to fancy your inner interior designer. For instance, the internal walls have been designed with wardrobe niches - 2 in the master bedroom and 1 in the other bedrooms. This ensures that the wardrobes will seamlessly blend in.

The L-shaped Bay Windows have been thoughtfully made so that you can have a corner to sit and relax and see the beauty of nature, right here in your master bedroom. Not to mention on how space saving it actually is. And at night, pull out that telescope and point it at the heavens through the window. And should you see a shooting star, quickly make a wish.



SPOT LAMINATION FOR WINDOW

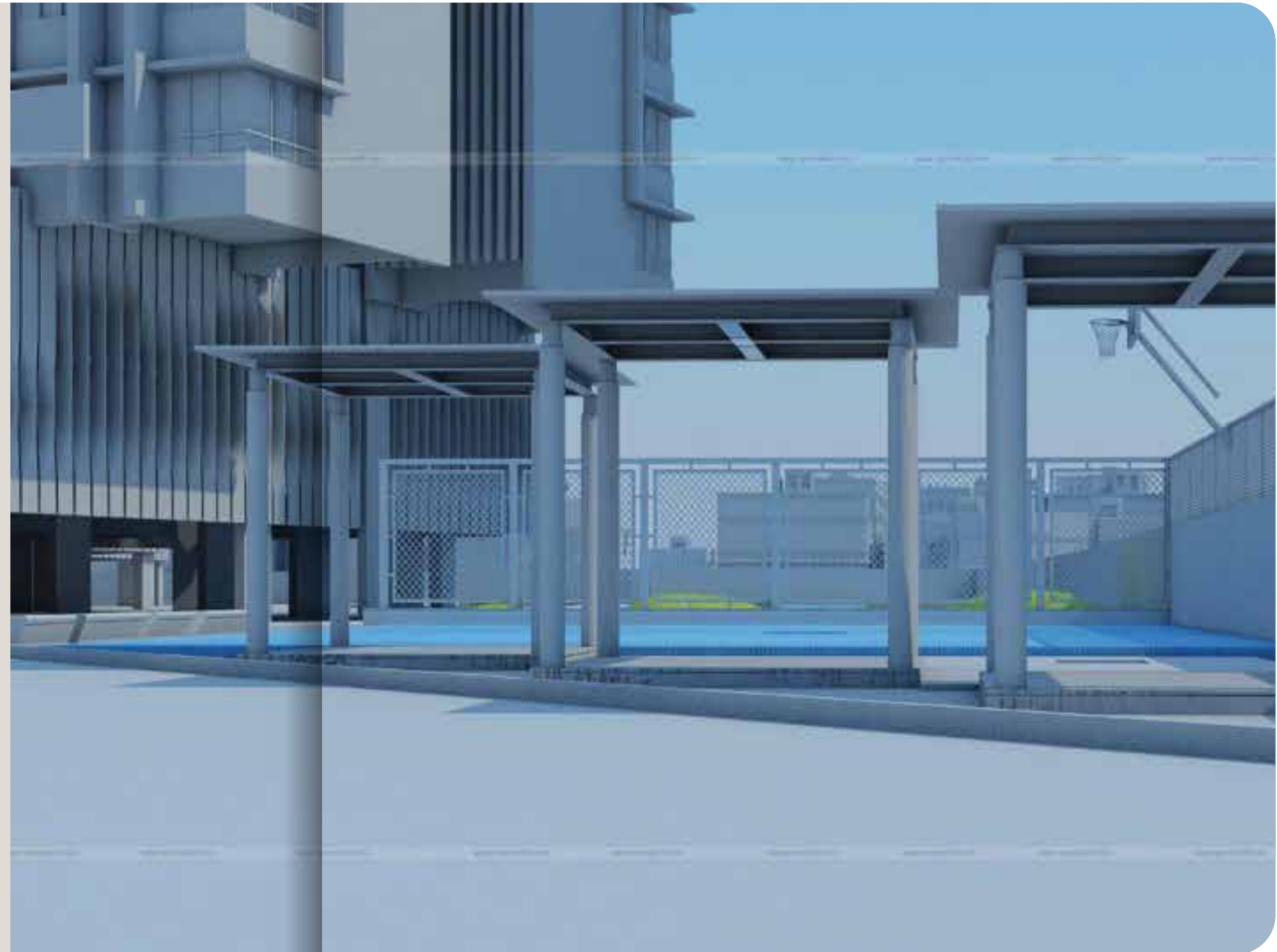
**MAKE TIME  
FOR SOME  
ENERGETIC  
AFFAIRS.**



Our frenetic life often comes with unnecessary stress. But when you make Hi-Life your home, you can bid farewell to those problems and just embrace the good things in life. Keeping the modern requirements to maintain a healthy lifestyle in mind, HiLife ensures you can kick start the day with some exercise. Spread across acres, Hi-Life displays a unique Y-shaped towers, with 20 floors that castle over surrounding buildings. Thus, making it the ideal home that not only offers a perfect panoramic view but allows enough air circulation and sun-rays inside each and every apartment. These towers also share common, central and vehicle-free landscape podiums that are easily accessible to our elderly people and the little ones. You can walk, or just stroll to get ready for the day as the fresh air rejuvenates you.

Walk down to the open space on the north side. Practice teeing at the mini golf course or work up some sweat at the tennis court and the half basketball court.

Amenities Offered  
(Central Podium landscape,  
North East side Open spaces,  
South Side open space with club house)



MAKE TIME  
FOR MORE  
ACTIVE  
EVENINGS.



All work and no play makes, not just Jack, but everybody dull. So, after a long day at work, evenings at Hi-Life speed up a notch. Keeping your eclectic taste in mind, we have designed 3 recreational zones. So, depending on your mood, impulse and feelings you can choose to either take it slow, fast or just chill and breathe.

The first zone is the CENTRAL PODIUM LANDSCAPE which is a 29,000 sq. ft. vehicle-free open area. Anytime you feel like your body has not been getting enough exercise, you can just hop down here. This place also has special section reserved especially for your kids and elderly parents. That way, they can bond while you do your thing.





## MAKE TIME FOR SOCIAL LIFE.

For the party animals at HiLife, the day has barely begun. So, get back home, and get ready for the evening. Step out in your finest threads and get ready for an evening soiree at the infinity pool or the party lawns. The Infinity pool has a separate kiddie pool and proper sit outs for parents.

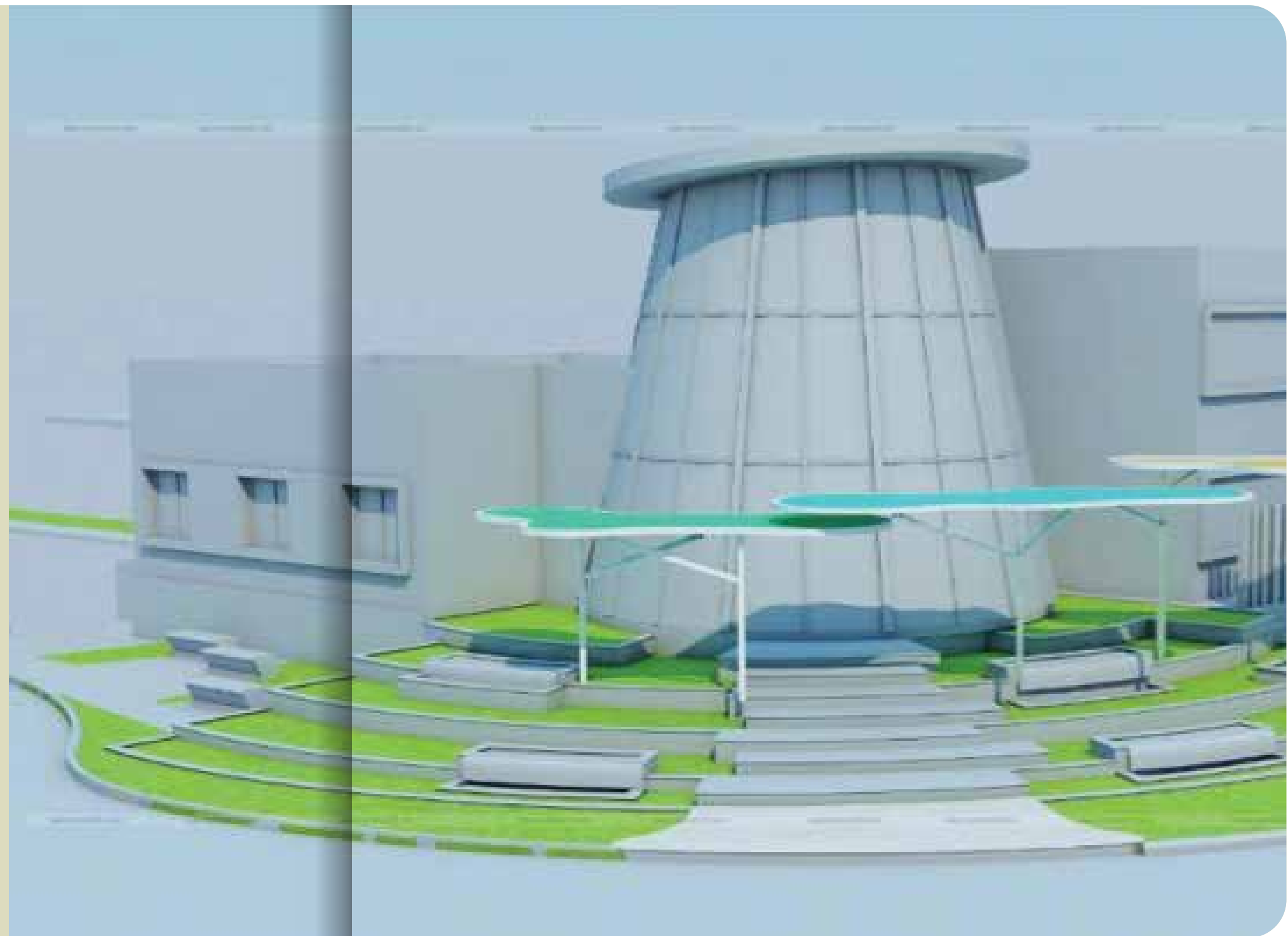
The area includes a multipurpose hall with an extension to a party lawn. A barbeque counter is designed near the party lawn with seating plaza near the party lawn.

Stack columns and Palm trees discretely screen you from the surrounding vehicular movement.

Clubhouse is planned with space for indoor games, gymnasium beside the infinity pool where one can enjoy the view of pool and outdoor landscape portion.

Stack columns and Palm trees discretely screen you from the surrounding vehicular movement.

Clubhouse is planned with space for indoor games, gymnasium beside the infinity pool where one can enjoy the view of pool and outdoor landscape portion.





**LIVE  
EVERY  
MOMENT**



CUT OUT LIKE COVER PAGE



The first zone is the CENTRAL PODIUM LANDSCAPE which is a 29,000 sq. ft. vehicle-free open area. Anytime you feel like your body has not been getting enough exercise, you can just hop down here. This place also has special section reserved especially for your kids and elderly parents. That way, they can bond while you do your thing.

1. Cycling: Bicycles may change, but cycling is timeless. Which is why, we have introduced a special cycling track on the podium so that children get an opportunity to zip around on their own.

2. Skating: They say if god had wanted people to walk, he wouldn't have invented roller skates. Roller skating keeps you occupied and is a great fitness activity for people of all ages. Start today.

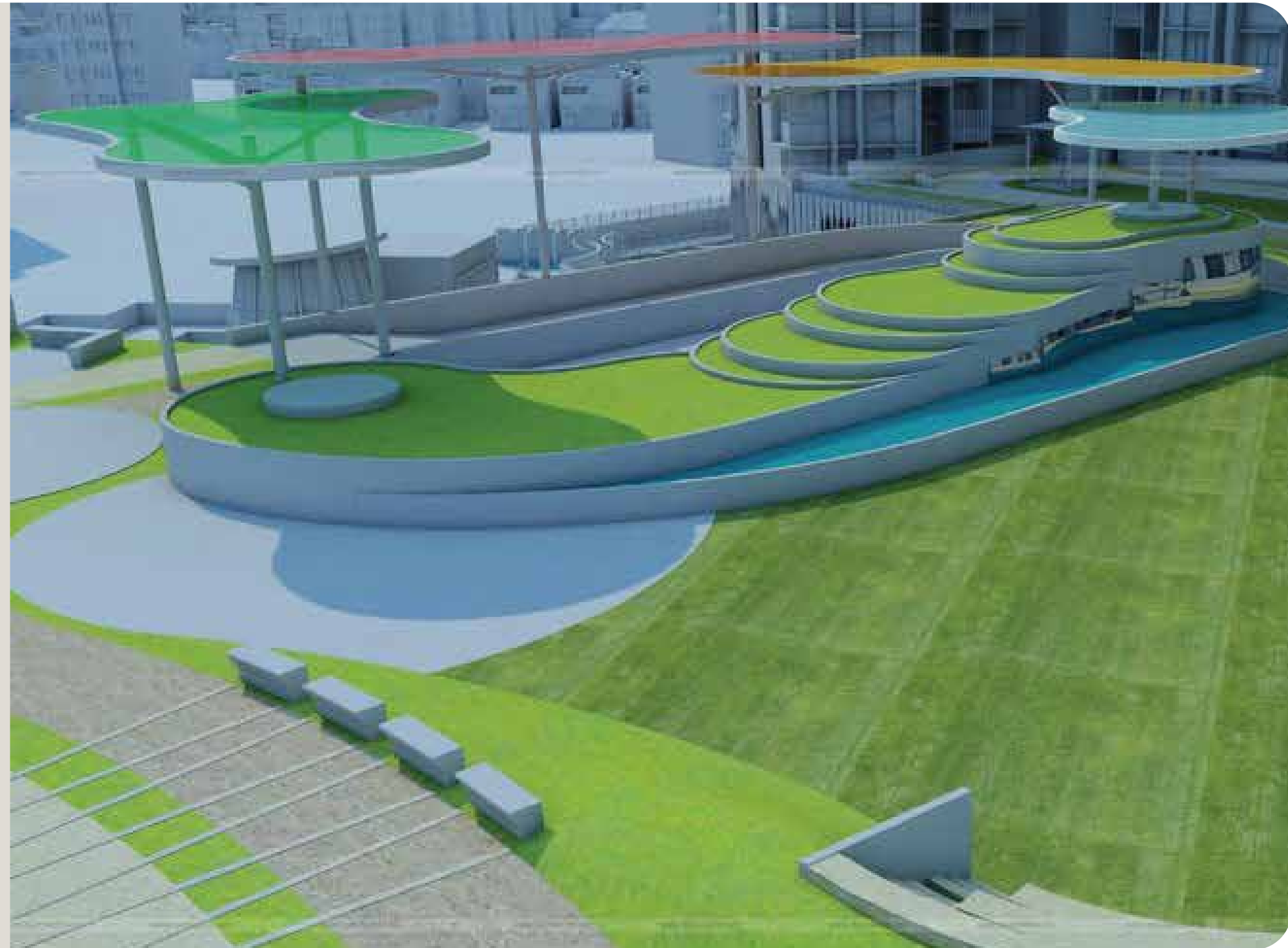
3. Jogging: This has been designed to create a pleasant environment. An acupressure path for senior citizens with plaza for balance and physical improvement. If they want to rest, they can rest for a bit away from the maddening crowd.

4. Yoga: Begin the day or end the day on a healthy note at the Yoga lawn.



5. Activity Lawn: The central stretch of green can be used for a variety of games for all age groups. Want to stage a play? Go stage it at the amphitheatre.

6. Sand Pit: Perhaps the most exciting section of the entertainment area is the sand pit. Playing in the sand is a great opportunity for children to have unstructured play time. Whether shaped into castles, dug, dripped, sifted, or buried, sand takes many different forms, thus offering endless opportunities for fun and learning.



7. Toddlers: Children are our future. Which is why, an approximate area of 7000 sq.ft. has been allocated separately to avoid the noise in central landscape portion along with proper seating arrangement for adults. Which is perfect for grandparents so that they can keep an eye on the young ones.

8. Squash and Badminton: Badminton and squash are one of the fastest games in existence today. People who regularly play them are fitter, live longer, and enjoy better mental health.



The Second recreational zone is towards the southern side. It is where you go when you want to cool off with your friends, followed by some juicy barbeque to end the perfect evening. The Infinity pool that overlooks the outdoor landscape is guitar shaped and there is a separate pool just for the kids. Don't worry, your privacy will not be encroached upon because we have a screening effect to take care of that. The Clubhouse, which is right next to the pool, holds space for indoor games and gymnasium. A Multipurpose hall to entertain your friends has a party lawn with a barbeque counter and a cricket patch, just in case you want to sweat a little more before your big feast.

The Third recreation space faces the North East. If you want to burn your calories after a holiday feast, this is the place for you.

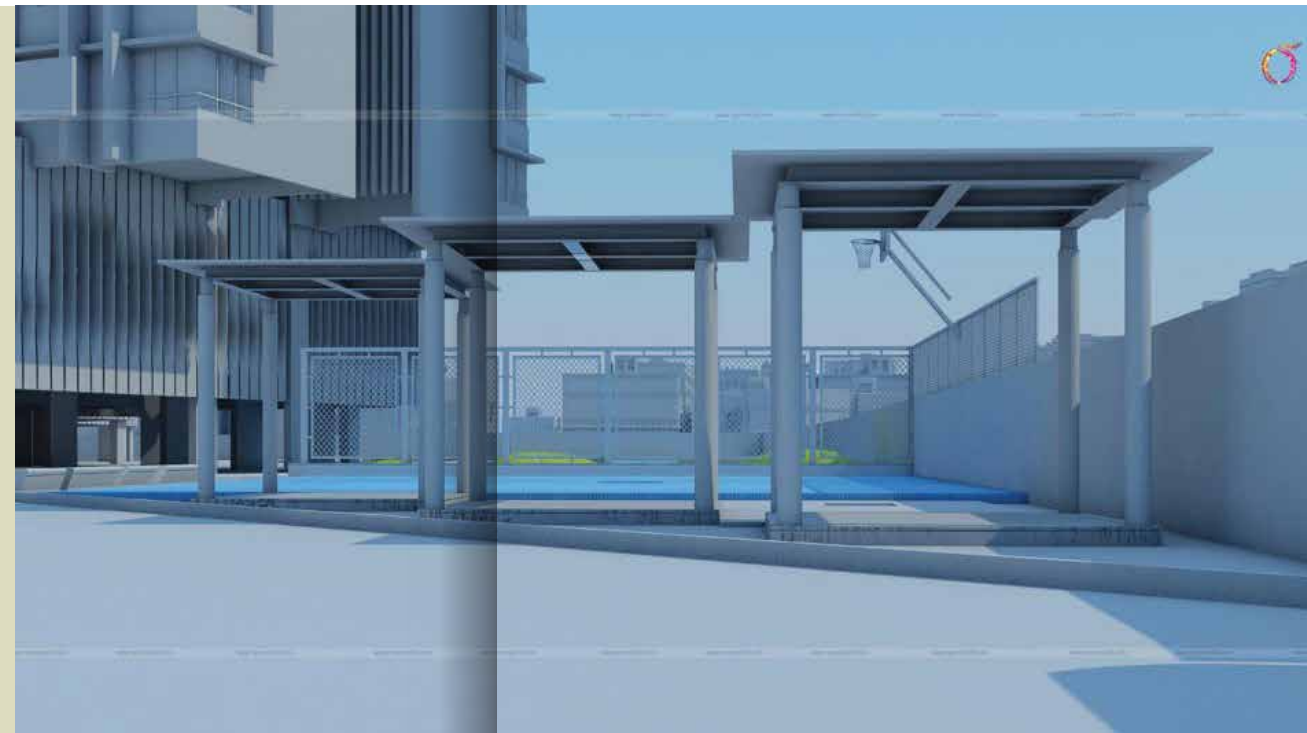
You can get in shape while playing lawn tennis in the lawn tennis court or basketball in the half basketball court. If you want to take it a little easy, the mini golf course is right here. After the intense workout you can have a nice chat or relax in the pavilions and chit-chat plazas.

All three recreations zones are planned to compliment your diverse taste and one-of-a-kind lifestyle.

The Third recreation space faces the North East. If you want to burn your calories after a holiday feast, this is the place for you.

You can get in shape while playing lawn tennis in the lawn tennis court or basketball in the half basketball court. If you want to take it a little easy, the mini golf course is right here. After the intense workout you can have a nice chat or relax in the pavilions and chit-chat plazas.

All three recreations zones are planned to compliment your diverse taste and one-of-a-kind lifestyle.



**VTP REALTY.  
STAY STRONG.  
STAY HAPPY.**



### Better Design

All our residences are designed to maximize the living area of each room. Which is why, we always focus on the living space and not the carpet space.

### Better Build

Since buying a house and making it into a home is a landmark journey, we believe every beautiful journey should have a strong foundation.

Which is why, we have used Mivan technology that ensures strength and durability because of the aluminum formworks.

VTP Realty belongs to the 30 year old VTP Group that holds a prominent position in supplying construction material like cement, steel, fly ash, bricks, crushed aggregates, RMC (Ready Mix Concrete) and sanitary ware.

It draws its strength from its experience in constructing residential and commercial projects from its group company - Viraj Projects (I) Pvt. Ltd. It has constructed close to 100 projects for Government agencies, infrastructure companies and reputed real-estate developers across India.

### Better Care

We also pass on the cost benefit of being a backward integrated company to our buyers and offer homes at such a competitive price.





# THE INSIDE STORY



#### Flooring

Living, Dining, kitchen  
Vitrified Tiles ( 800 x 800 mm)

All bedrooms  
Vitrified Tiles ( 600 x 600 mm)

Terraces  
Anti-skid ceramic Tiles

#### All toilets

CP fittings – Jaquar equivalent /Cera

Flooring – Matt finished tiles for all toilets

Designer Decorative Dado Tiles upto 7ft (300 x 600)

Solar connections in all toilets

#### Geyser's point

Toilet door frames in granite  
Doors

Main door – Decorative entrance door with  
Laminate

Internal doors – Laminated Flush door.  
Laminated flush doors in Wash Rooms.

#### Windows

Powder coated aluminum sliding windows with  
Mosquito net.

S.S. RAILING TO TERRACE



**Kitchen**

Granite Kitchen platform  
S.S. Sink  
Ceramic/glazed tiles above kitchen platform 2ft

**Electrification**

Switches – legrand equivalent modular switches.  
Concealed copper wiring with M.C.B.  
Adequate electric points with TV & Telephone  
points in living room , master bed room.  
AC points in master bedroom

**Power back-up**

100% DG Back-up for lifts & common area.  
Provision of inverter

**Plumbing**

Concealed anti-corrosive plumbing.

**Wall finishes**

Luster paint for internal wall.  
Exterior – Superior quality Texture paint

**Automation**

Intercom Facility  
Video Door Phone, DTH and Internet connection




CURRENT MAP TO BE REPLACED

# Connection is the key to Success.

As much as we love our abode, we need to step out sometimes. Thankfully, Hi-Life is well-connected to most of the major landmark so that you don't have to go very far from your home at all. Situated perfectly between Baner and Aundh, but far away from the chaos of Hinjewadi, Hi-Life is well located in a buzzing, thriving and growing locality in western Pune. All thanks to National Highways, it is well connected to Mumbai and other cities. What's more? It is only a distance away from the IT and commercial hubs like Go Square, Pushpak Business Hub and Solitaire Business Hub. So, you will find life happening and eventful, not just in Hi-Life, but around it too. You will find both inner peace and happiness without getting disconnected from the world.



- |   |   |  |   |  |  |
|---|---|--|---|--|--|
| <br><b>HOSPITALS</b> | <ul style="list-style-type: none"> <li>Aditya Birla Hospital (2KM)</li> <li>Life Point Multispeciality Hospital (3KM)</li> <li>Surya Mother and Child Super speciality</li> <li>All type of clinic (0KM)</li> </ul> | <br><b>EDUCATIONAL INSTITUTIONS</b> | <ul style="list-style-type: none"> <li>Wisdom World School (3KM)</li> <li>Euro School (3KM)</li> <li>Akshara International School (3KM)</li> <li>Blossom Public School (3KM)</li> <li>Indiar College (2.5 KM)</li> <li>DY Patil College (3 KM)</li> <li>Balaji Institute (2KM)</li> </ul> | <br><b>SHOPPING</b> | <ul style="list-style-type: none"> <li>D-Mart (Hinjewadi 4.5 KM)</li> <li>D-Mart (Thergaon 3 KM)</li> <li>Reliance Fresh (4KM)</li> <li>Big Bazaar (4.5KM)</li> <li>Westend Mall (9KM)</li> <li>Xion Mall (4.5 Km)</li> <li>Spot 18</li> <li>E-Square (4.5 KM)</li> <li>City Pride (Pimple Saudagar 3KM)</li> <li>Carnival Cinema (6KM)</li> <li>PVR Chinchwad (6KM)</li> <li>Pimpri Centre (6KM)</li> </ul> |
| <br><b>TRANSPORT</b> | <ul style="list-style-type: none"> <li>BRT Bus stand (0KM)</li> <li>Shivaji Nagar Bus Stand (14KM)</li> <li>Chinchwad Station (5KM)</li> <li>Pune Railway Station (17KM)</li> <li>Airport (22.5 KM)</li> </ul>      | <br><b>RESTAURANTS</b>              | <ul style="list-style-type: none"> <li>Sayaji Hotel (2.5 KM)</li> <li>Ginger Hotel (2KM)</li> <li>Courtyard Marriott (3.5 KM)</li> <li>The Gateway (3.5KM)</li> <li>Dominos (1.5 KM)</li> <li>Mc Donald's (1KM)</li> <li>Barbeque Nation (3KM)</li> </ul>                                 |  |  |