

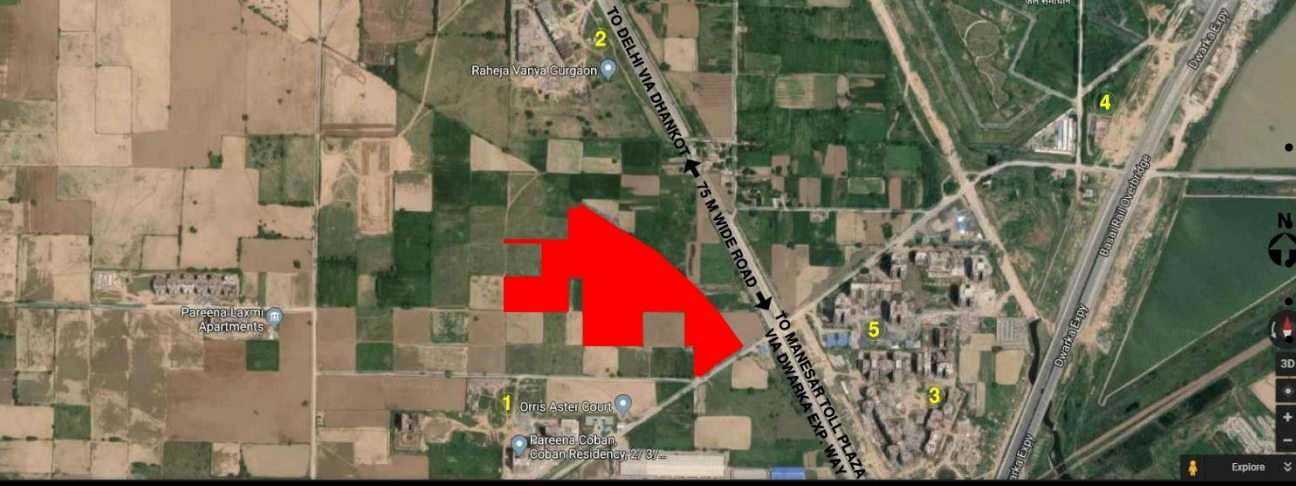
ATS GRANDSTAND

SECTOR-99A, GURUGRAM



SITE LOCATION

Location : Sector-99A,
Gurugram
Site Area : 12.58 Acres
No. of Flats : 928 Approx
Built-Up Area : 23 lac Sq.Ft. Approx
Saleable Area : 17.77 lac Sq. Ft.



SITE PLAN

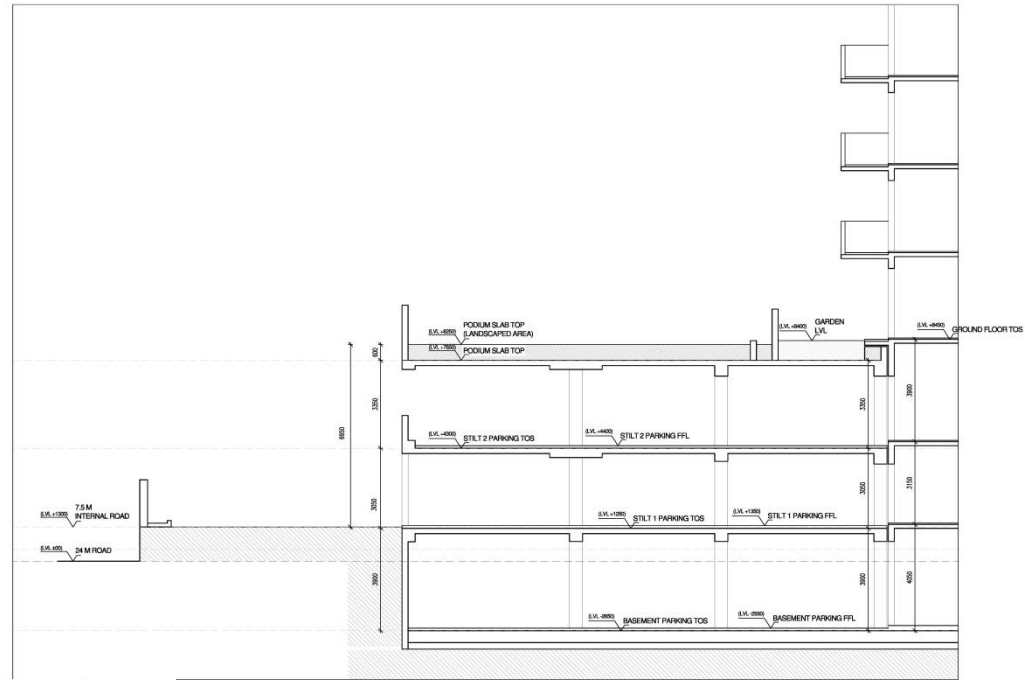


PROJECT DETAILS

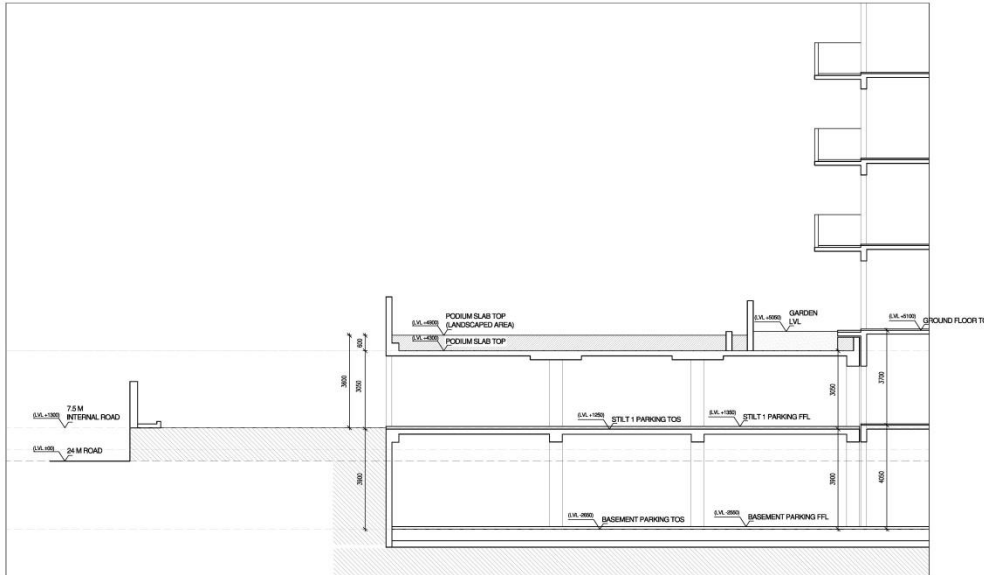
- **No. of Towers : 9**
- **A Type -1 Nos. (B + 2S + 34), Height: 118.4 Mts**
- **B Type - 3 Nos. (B + 2S + 34)/ (B + S + 34), Height: 118.4 Mts**
- **CD Type- 4 Nos. (B + 2S + 34), Height: 118.4 Mts**
- **C Type- 1 Nos. (B + S + 34), Height: 115.7 Mts**

- **A Type: Size 2850 Sq. Ft.**
- **B Type: Size 2350 Sq. Ft.**
- **C type: Size 1750 Sq. Ft.**
- **D Type: Size 1550 Sq. Ft.**

- **Basement: 1 Level (27133 sq.m.)**
- **Stilt Parking: 2 Levels (17625 sq.m. + 13852 sq.m.)**
- **Parking: 1860 Cars (Basement + Stilt + Surface)**



**SCHEMATIC SECTION (DOUBLE STILT)
FOR TOWER NO. 2,3,4,5,6,7 & 8**



SCHEMATIC SECTION (SINGLE STILT)

FOR TOWER NO. 9 & 10

Note:

1. All Figures Are Tentative & May vary at The Time of Approval
2. Number of floors have been written omitting 13th physical floor.

RERA SUBMISSION FOR PHASE-1 & PHASE-2



Additional Towers For TOD FAR



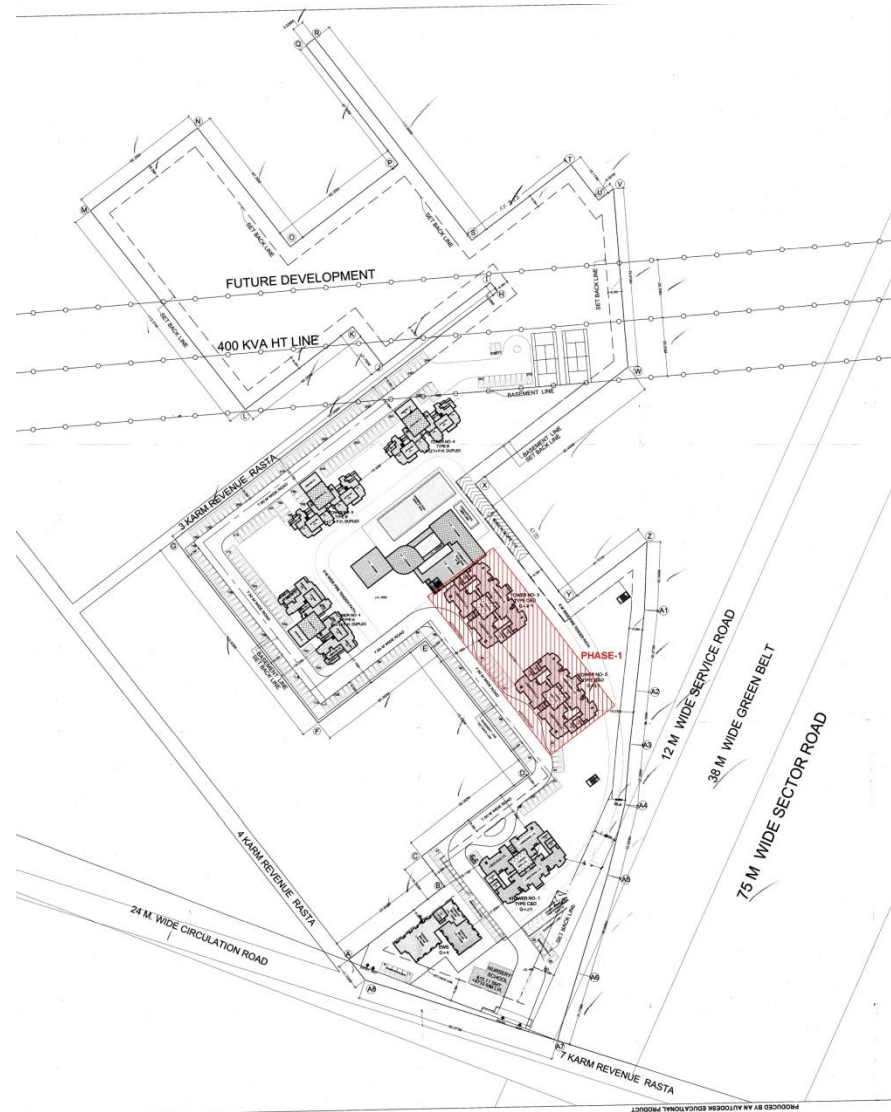
Additional 1.08 acres Land Applied For Licence



Towers with Increased Height

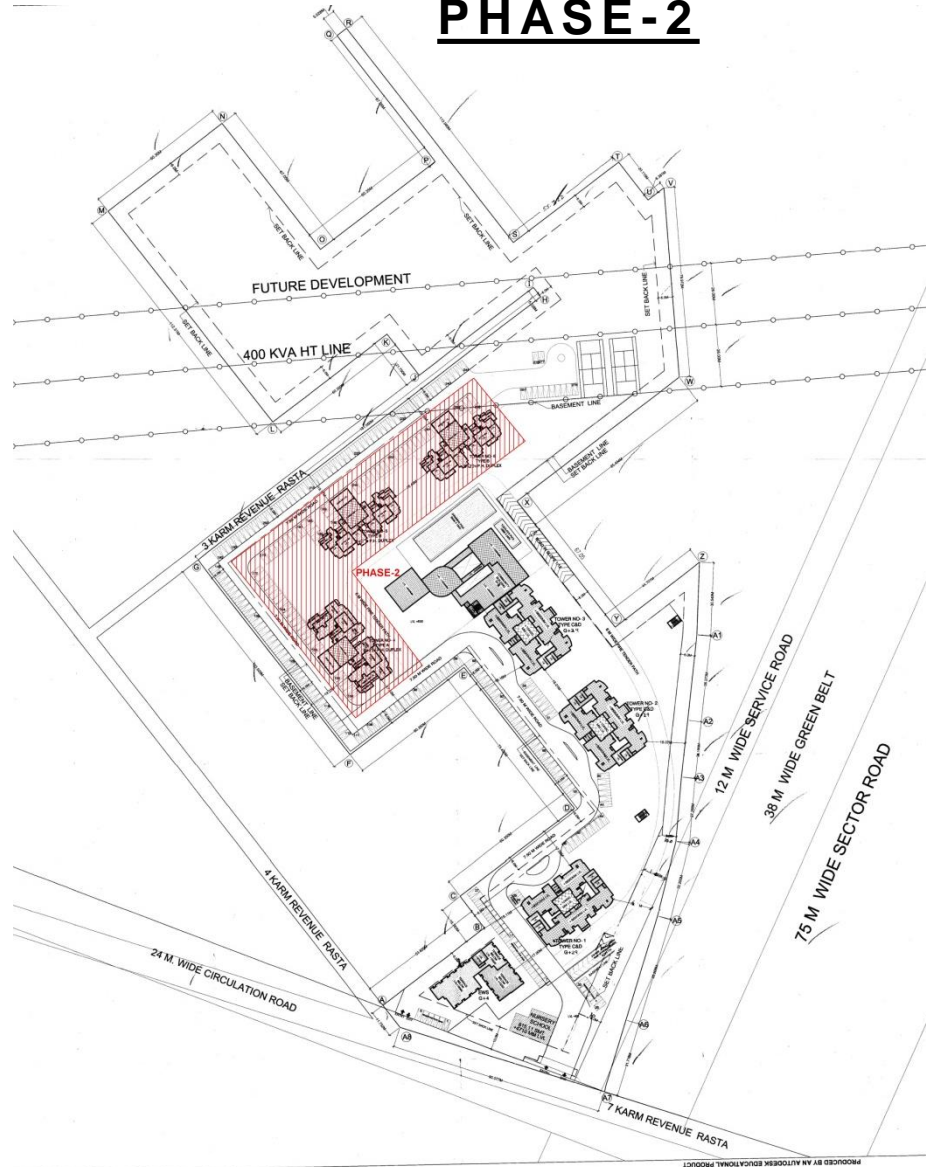
RERA SUBMISSION FOR PHASE-1 & PHASE-2

PHASE-1



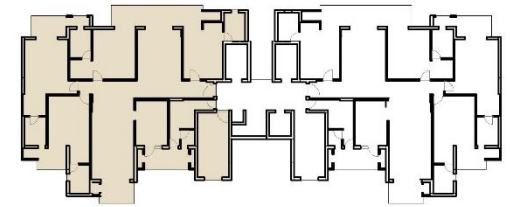
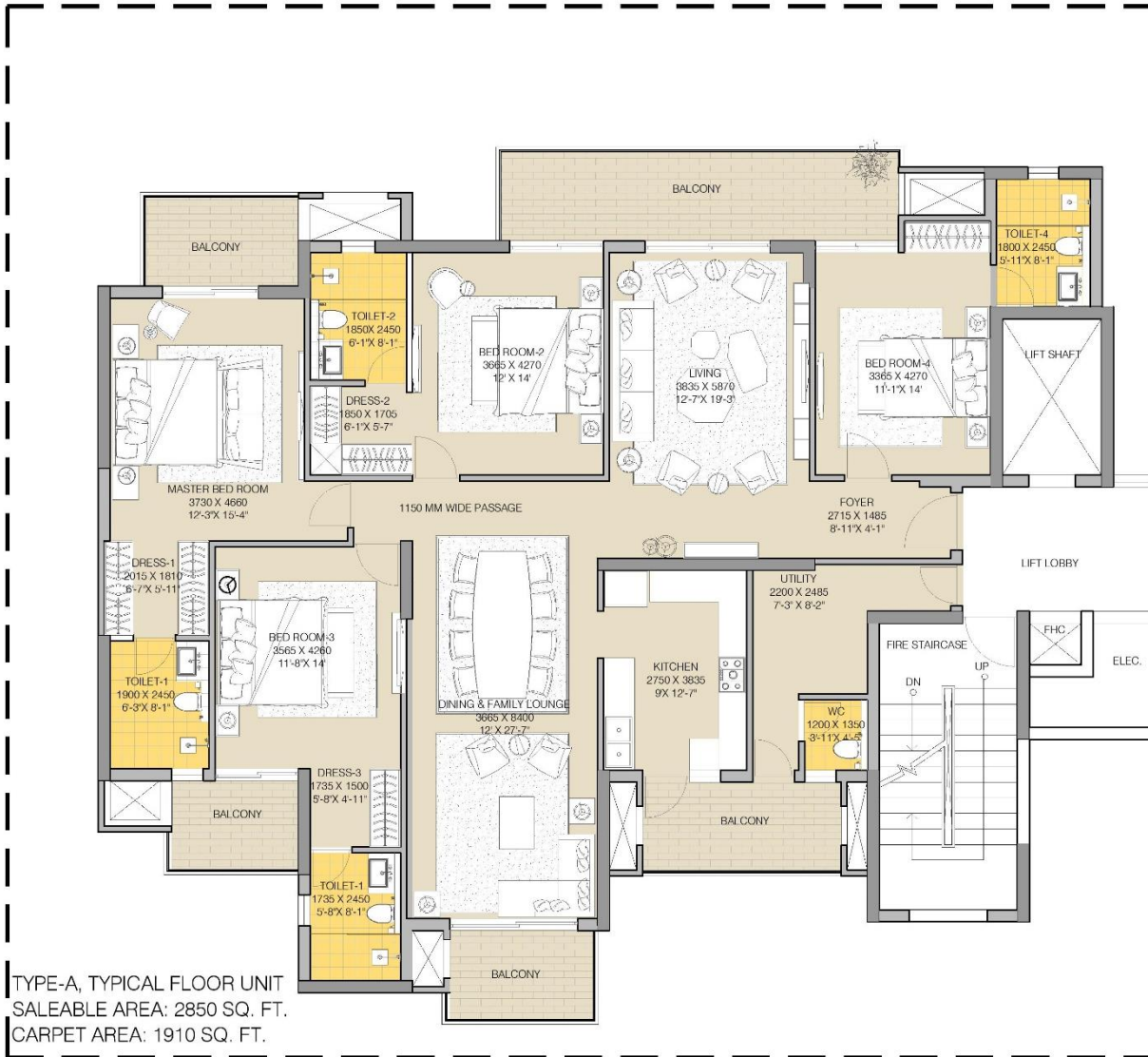
Towers 2 & 3 For Phase-1

PHASE-2



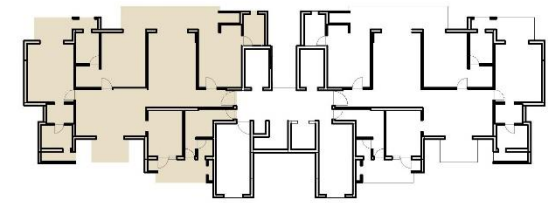
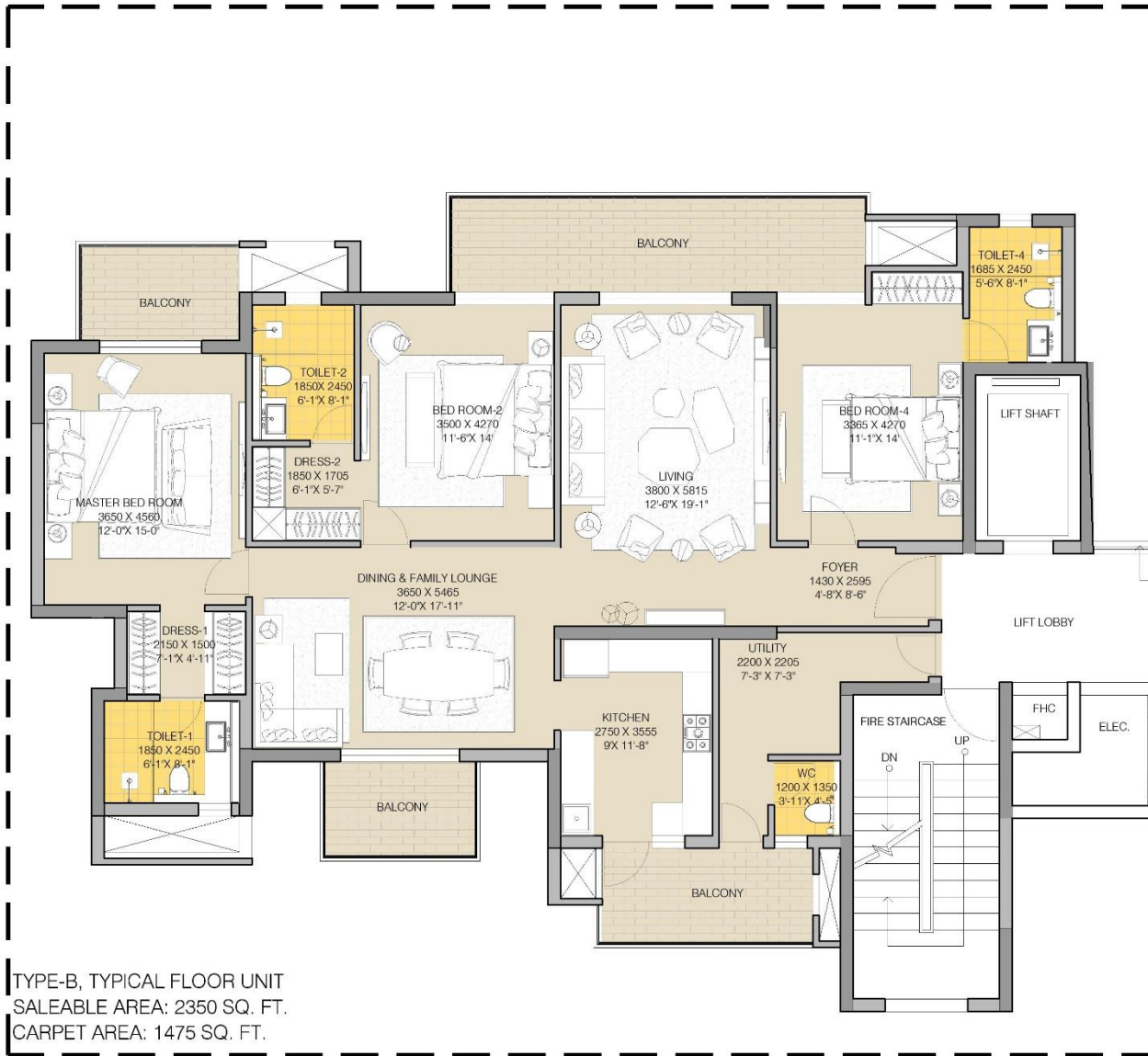
Towers 4,5 & 6 For Phase-2

TYPE-A. TYPICAL FLOOR UNIT



TYPE-A TOWER
KEY PLAN

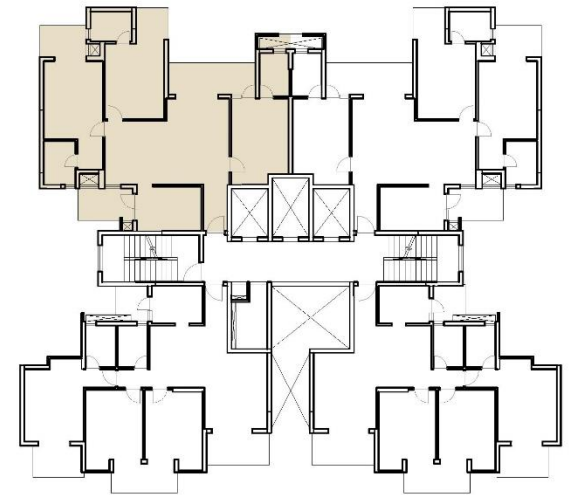
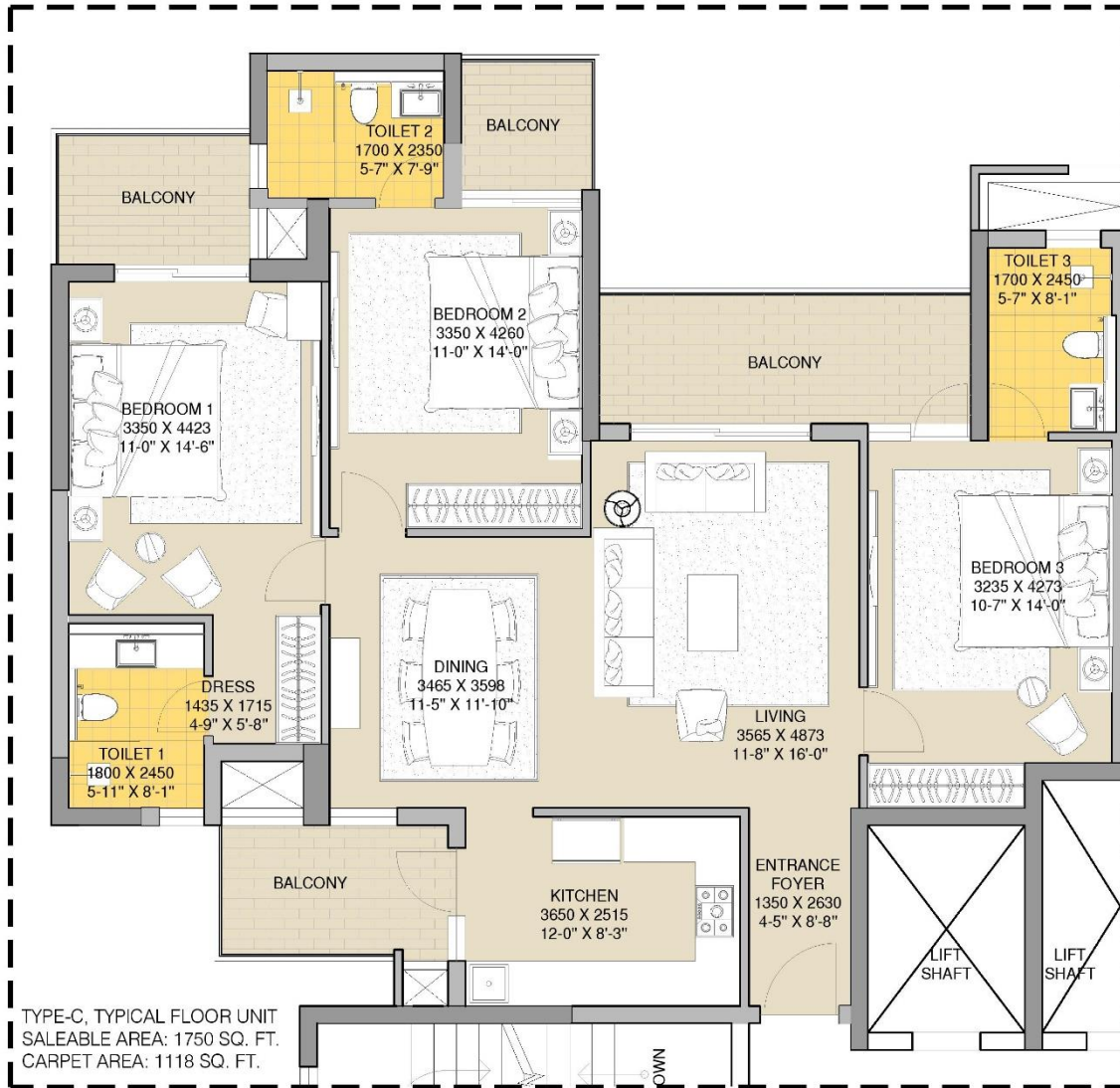
TYPE-B. TYPICAL FLOOR UNIT



TYPE-B TOWER
KEY PLAN

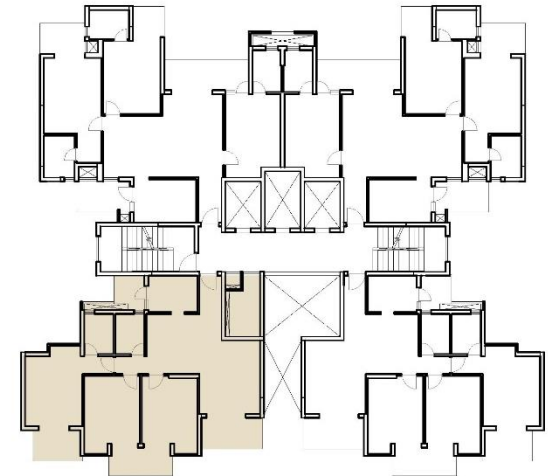
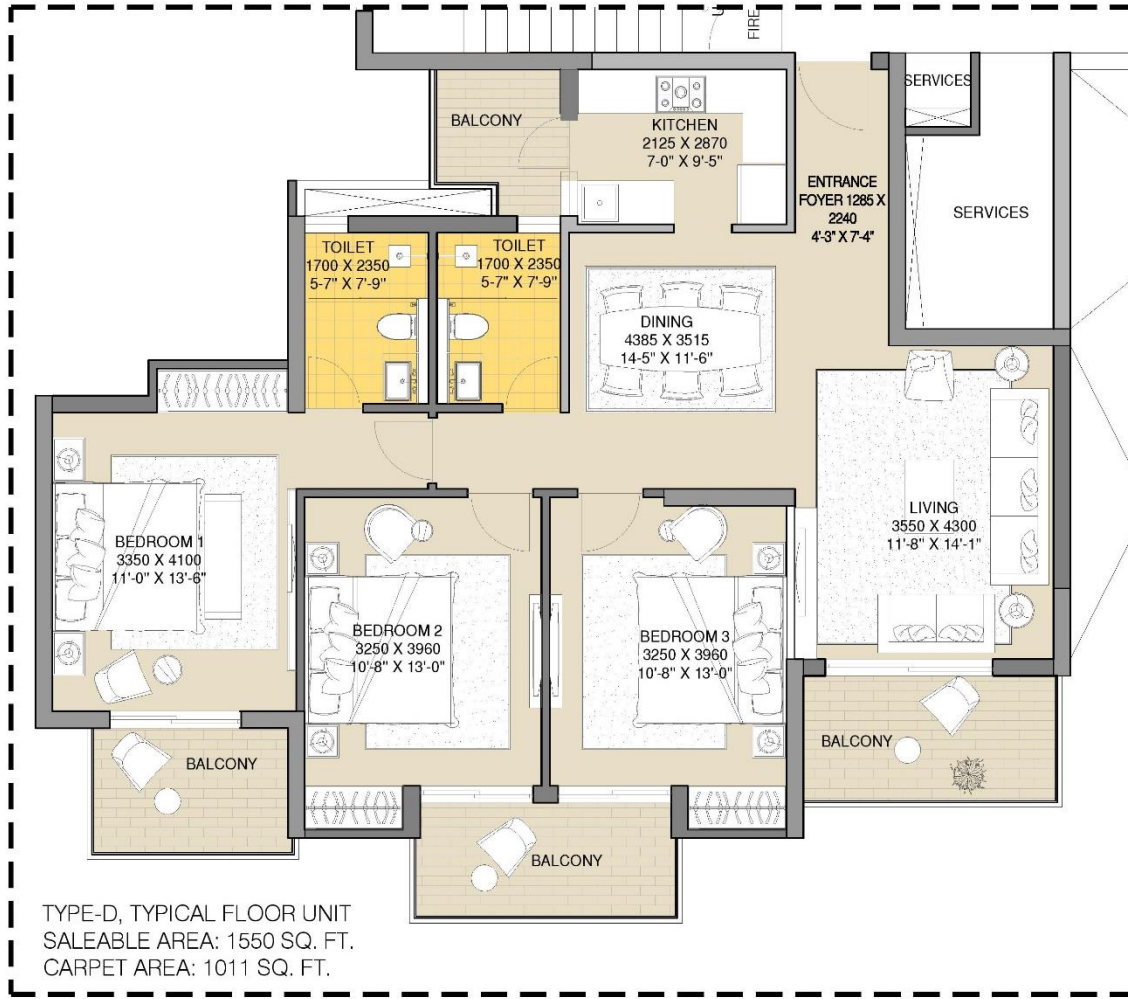
TYPE-B, TYPICAL FLOOR UNIT
SALEABLE AREA: 2350 SQ. FT.
CARPET AREA: 1475 SQ. FT.

TOWER-CD, TYPE-C. TYPICAL FLOOR UNIT



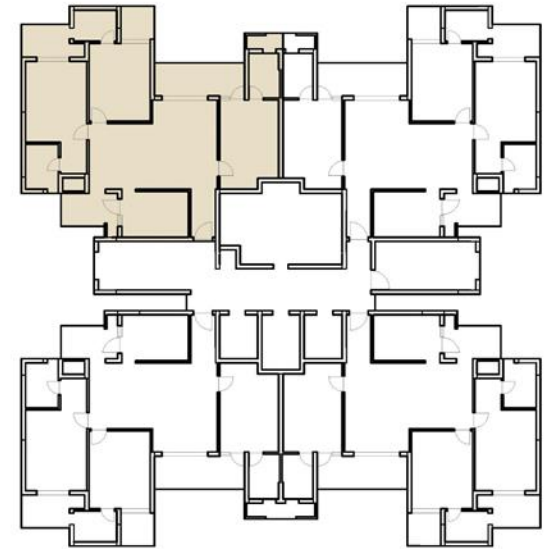
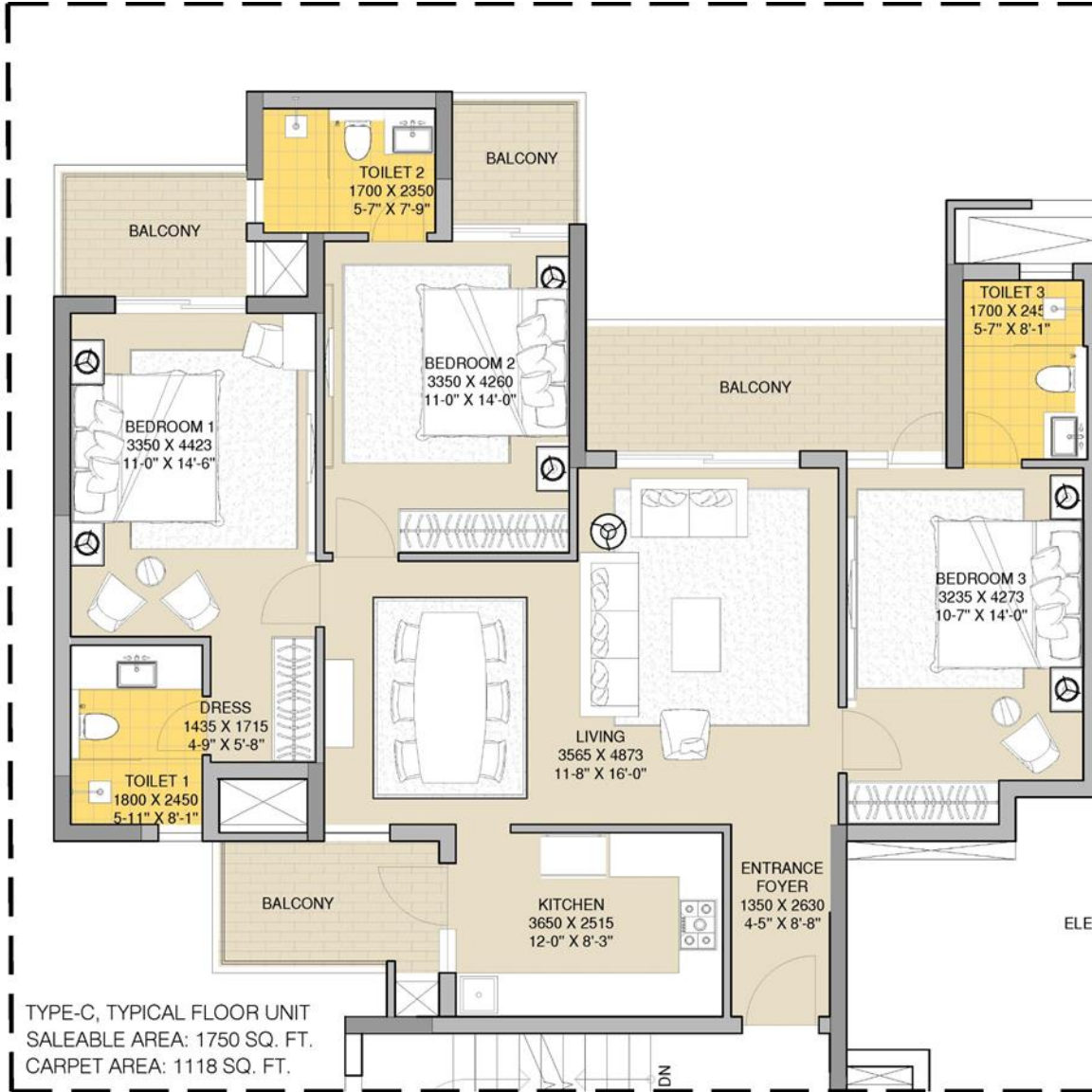
TYPE-CD TOWER
KEY PLAN

TOWER-CD, TYPE-D. TYPICAL FLOOR UNIT



TYPE-CD TOWER
KEY PLAN

TOWER-C, TYPICAL FLOOR UNIT



TYPE-C TOWER
KEY PLAN

