



# KEYS TO SECURITY

IN PARTNERSHIP WITH



MahaRERA No. P51800022159 available at website: <http://maharera.mahaonline.gov.in>. The project is being developed by Shivam Megastructures Private Limited and Godrej Properties Limited is the Development Manager. The project is mortgaged to PNB Housing Finance Limited and Yes Bank Limited.

**GODREJ NEST**  
KANDIVALI, MUMBAI



Stock image for representation purpose only.

**# A Feeling So Secure**

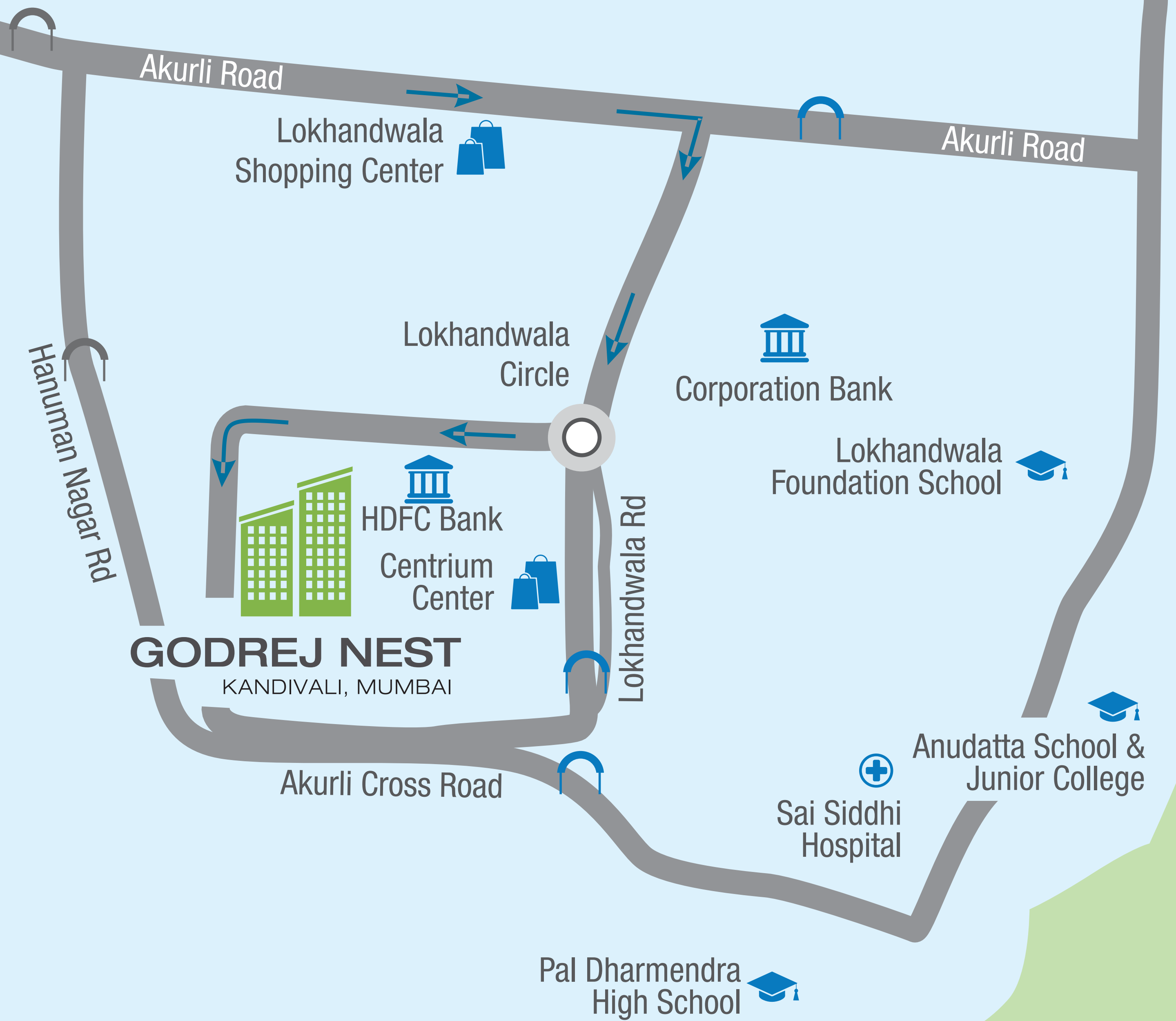
## INTRODUCING A LIFE WITH A TRUE SENSE OF SECURITY













Imagine a home so secure, all your safety woes disappear. A feeling so secure, just like you would take care of your loved ones. A home that covers crucial aspects of safety and security, so you can always live a worry-free life.

Godrej Properties brings to you a home with a secure ecosystem for all. A home that gives you a 'feeling so secure'.



# A NEIGHBOURHOOD WHERE THE WORLD COMES CLOSER



-  Landmark
-  Roadway
-  Commercial
-  Hotel/Restaurant
-  Hospital
-  Educational Institute
-  Express Highway
-  Mall
-  Bank
-  Railway Station
-  Hotel
-  Metro Rail

Source



## CONNECT WITH LIFE AROUND GODREJ NEST

### SCHOOLS & COLLEGES

Lokhandwala Foundation School	06 min <sup>#</sup>
Thakur Public School	16 min <sup>#</sup>
Cambridge School	18 min <sup>#</sup>
Oxford International School	19 min <sup>#</sup>
Oberoi International School	21 min <sup>#</sup>

### HOSPITALS

DNA Multispeciality Hospital	06 min <sup>#</sup>
Shree Sai Hospital	14 min <sup>#</sup>
ALAP Hospital	15 min <sup>#</sup>
Sanjeevani Hospital	21 min <sup>#</sup>



## CONNECT WITH LIFE AROUND GODREJ NEST

### MALLS & THEATRES

Lokhandwala Shopping Centre	05 min <sup>#</sup>
Centrium Mall	06 min <sup>#</sup>
Growels 101	17 min <sup>#</sup>
Oberoi Mall	20 min <sup>#</sup>

### BANKS

HDFC	04 min <sup>#</sup>
SBI	05 min <sup>#</sup>
ICICI	05 min <sup>#</sup>

Source: Google Maps. Travel time basis normal traffic conditions.



Stock image for representation purpose only.

## **GODREJ NEST**

KANDIVALI, MUMBAI

Godrej Properties brings forth Godrej Nest at Kandivali East. It offers an environment surrounded by features made for every member of the family so that you can live a carefree and secure life at all times.

**7 TIER SECURITY - SUPERIOR  
ADVANCED FEATURES WHICH  
ENSURE 24/7 SECURITY**





# 7 TIER SECURITY



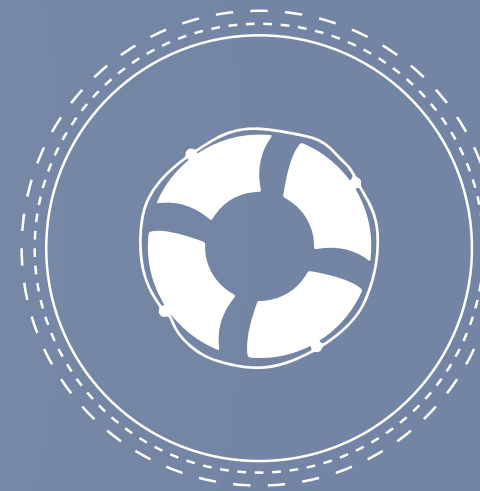
**PROJECT  
LEVEL**



**PARKING  
LEVEL**



**PODIUM  
LEVEL**



**AMENITY  
LEVEL**



**TOWER  
LEVEL**



**LOBBY LEVEL**



**APARTMENT  
LEVEL**

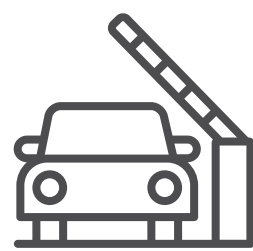
## 01 | PROJECT LEVEL

---

Your care starts as soon as you enter the project



Right from the moment you enter the vicinity, we ensure that there is always someone to make you feel secure.



**Project level features:**

- RFID vehicular access
- 24x7 guard patrol

## 02 | PARKING LEVEL

---

Ensuring your safety throughout the premises.



Stock image for representation purpose only.

Round the clock security surveillance ensures safety of every member.



### **Parking level features:**

- CCTV monitoring at parking level
- Relief button

## 03 | PODIUM LEVEL

Round the clock surveillance on the podium level.



Stock image for representation purpose only.

The 24/7 security control room makes sure that you and your loved ones are always looked after and are safe.



### Podium level features:

- Common security control room & 24 X 7 guard patrol
- CCTV monitoring
- Relief button

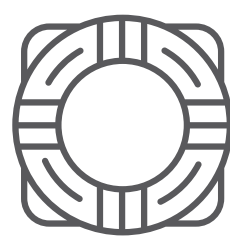
## 04 | AMENITY LEVEL

Let your children play freely, so you live worry-free.



Stock image for representation purpose only.

We ensure the safety of your little ones at every corner of the project.



### **Amenity level features:**

- RFID tracking/monitoring at swimming pool
- Relief button
- CCTV monitoring

## 05 | TOWER LEVEL

With an intercom system you can allow a person to access the tower, while you are secure at home.



Stock image for representation purpose only.

While you are safe at every step in our project, you also have the power to ensure your security while sitting at home.



### **Tower level features:**

- Numeric & voice control access
- Guard patrol in the lobby of every wing

## 06 | FLOOR/LOBBY LEVEL

Security at floor level while maintaining your safety at home.



Stock image for representation purpose only.

Without compromising on your own security, the video door phone helps you to know who's at your door before letting them enter.



### Floor/Lobby level features:

- Video Door Phone
- Safety Double Door

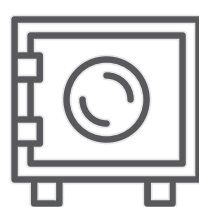
## 07| APARTMENT LEVEL

Your home offers the care and safety you need



Stock image for representation purpose only.

Ensuring the safety of your loved ones and your valuables even inside your home.



### Apartment level features:

- Godrej Vault
- Relief Button





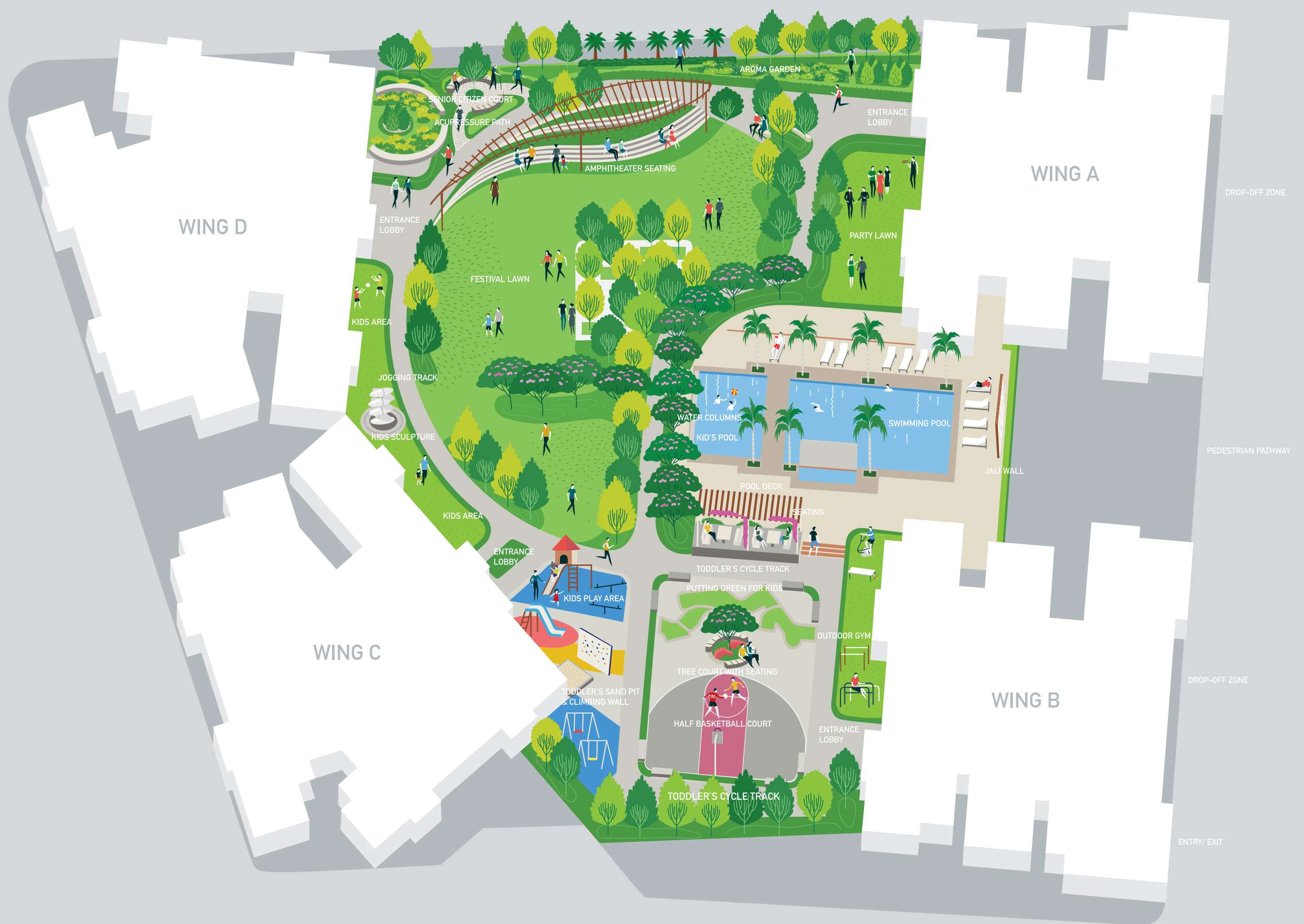
Stock image for representation purpose only.

Here innocence is open to play care-free. With small changes to everyday things to provide security to you and your family at every level, we make sure you live a secure life at all times.

**Additional security features:**

- Child locks on all doors
- Holders near WC's for added assistance
- Anti-skid tiles

# Master Layout Plan



Artist's impression. Not an actual site photograph

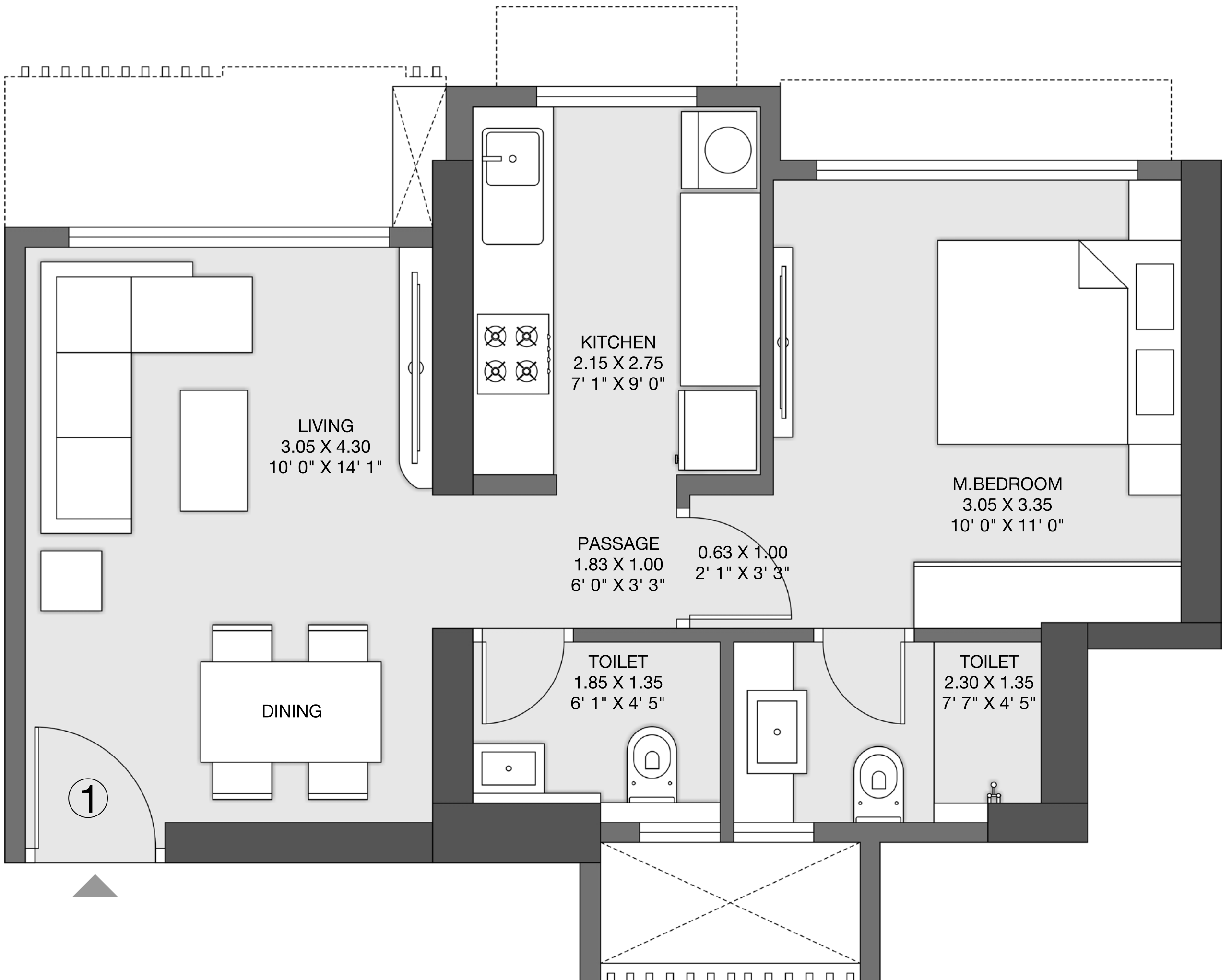
## LEGEND

- |   |                           |
|---|---------------------------|
| 1. ENTRANCE LOBBY                       | 15. POOL DECK             |
| 2. PLANTATION ISLAND WITH SCULPTURE     | 16. ADULTS' POOL          |
| 3. BOTANICAL GARDEN                     | 17. KIDS' POOL            |
| 4. JOGGING TRACK                        | 18. WATER FEATURE         |
| 5. AMPHITHEATER WITH PERGOLA            | 19. WATER COLUMNS         |
| 6. SENIOR CITIZEN AREA                  | 20. ACCUPRESSURE PATH     |
| 7. OUTDOOR CRECHE AREA                  | 21. OUTDOOR GYM           |
| 8. KIDS' SCULPTURE                      | 22. OUTDOOR PARTY LAWN    |
| 9. KIDS' PLAY AREA                      | 23. MULTIPURPOSE LAWN     |
| 10. TODDLERS' PLAY AREA                 | 24. YOGA/ZUMBA STUDIO     |
| 11. TODDLERS' CYCLE TRACK               | 25. FITNESS CENTER        |
| 12. MULTIPURPOSE COURT/BASKETBALL COURT | 26. MEDITATION ROOM       |
| 13. PUTTING GREEN FOR KIDS              | 27. KIDS' ACTIVITY CENTER |
| 14. SEATING WITH TRELIS                 |                           |

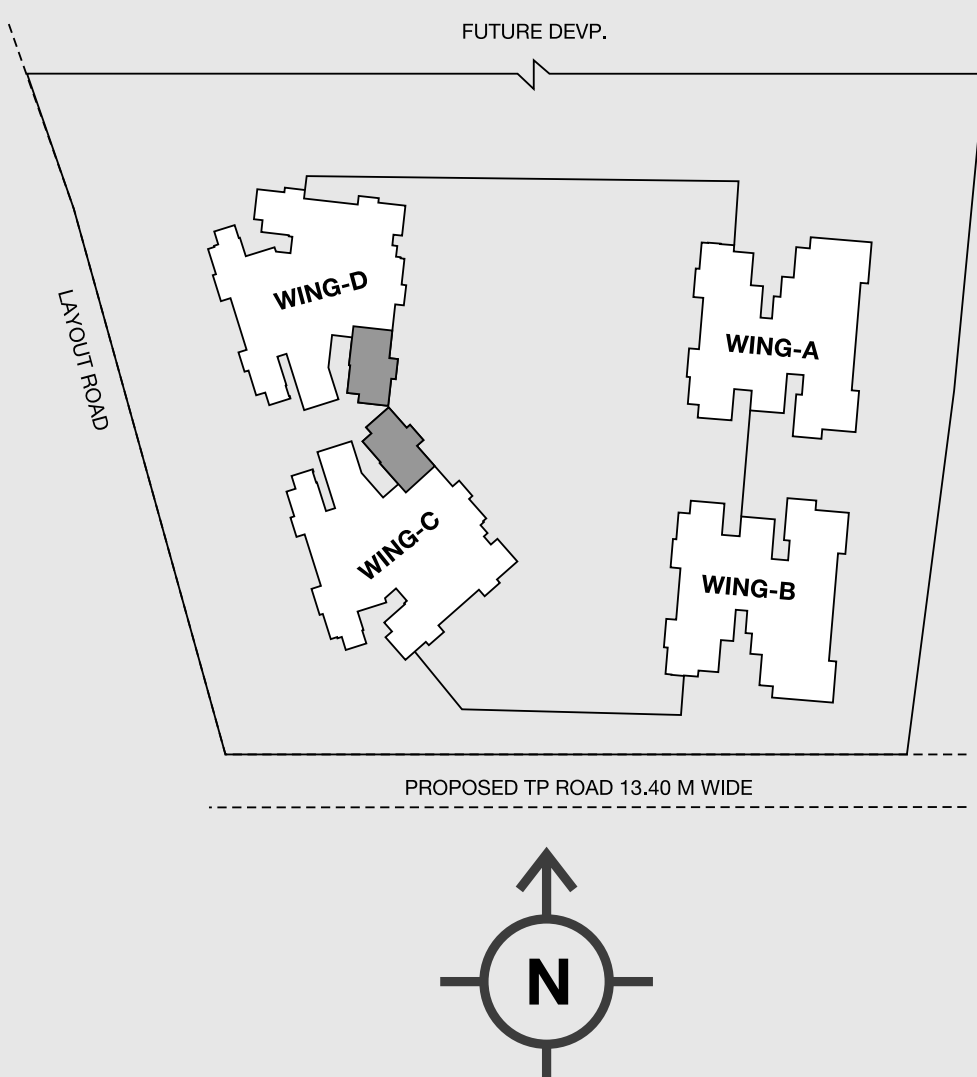
# GODREJ NEST

KANDIVALI, MUMBAI

## Unit Plan



## 1 BHK

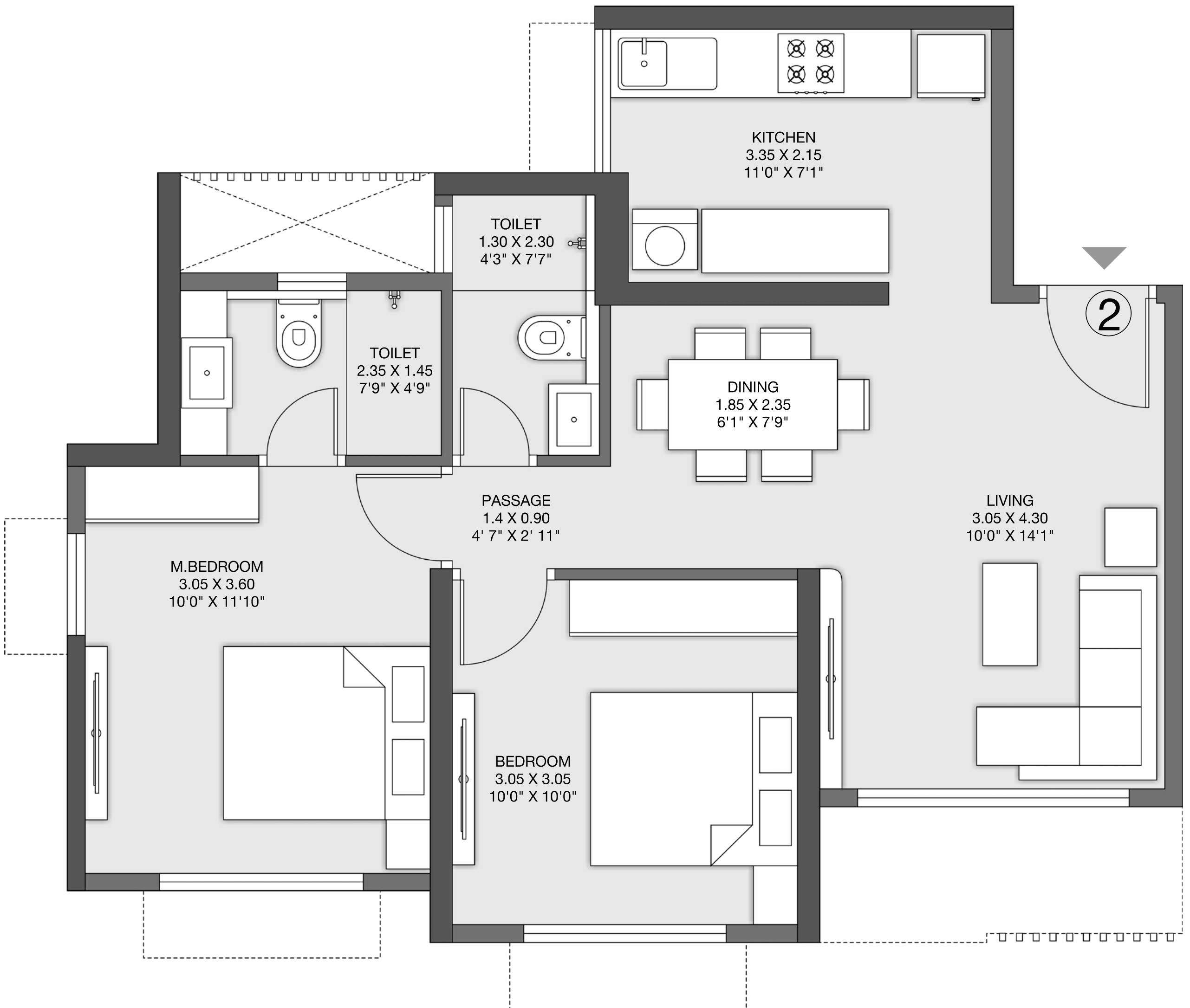


The furniture, decorative items, etc. shown in the plan are only suggested and the same are not intended or obligated to be provided as per specifications and/or service in the flat/unit and does not form part of the standard specifications. The plan represents unit series 1 of wing C 1 Sq m = 10.764 Sq ft.

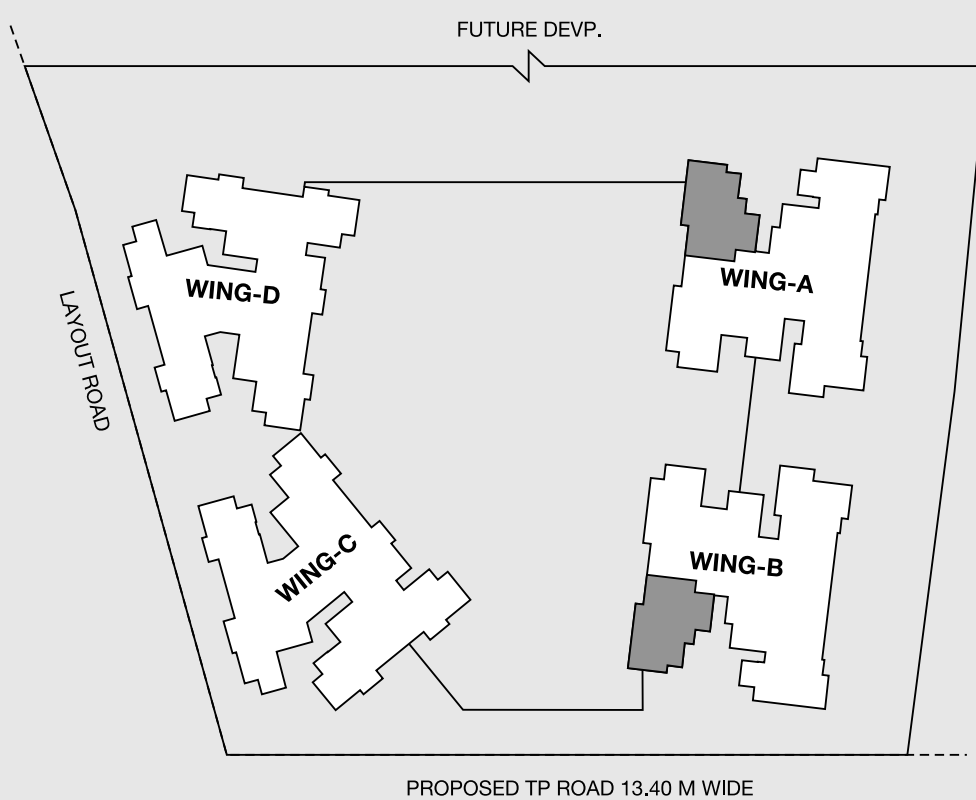
# GODREJ NEST

KANDIVALI, MUMBAI

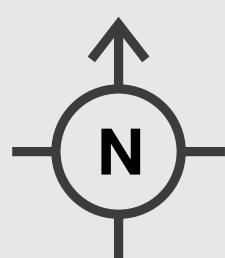
## Unit Plan



## 2 BHK



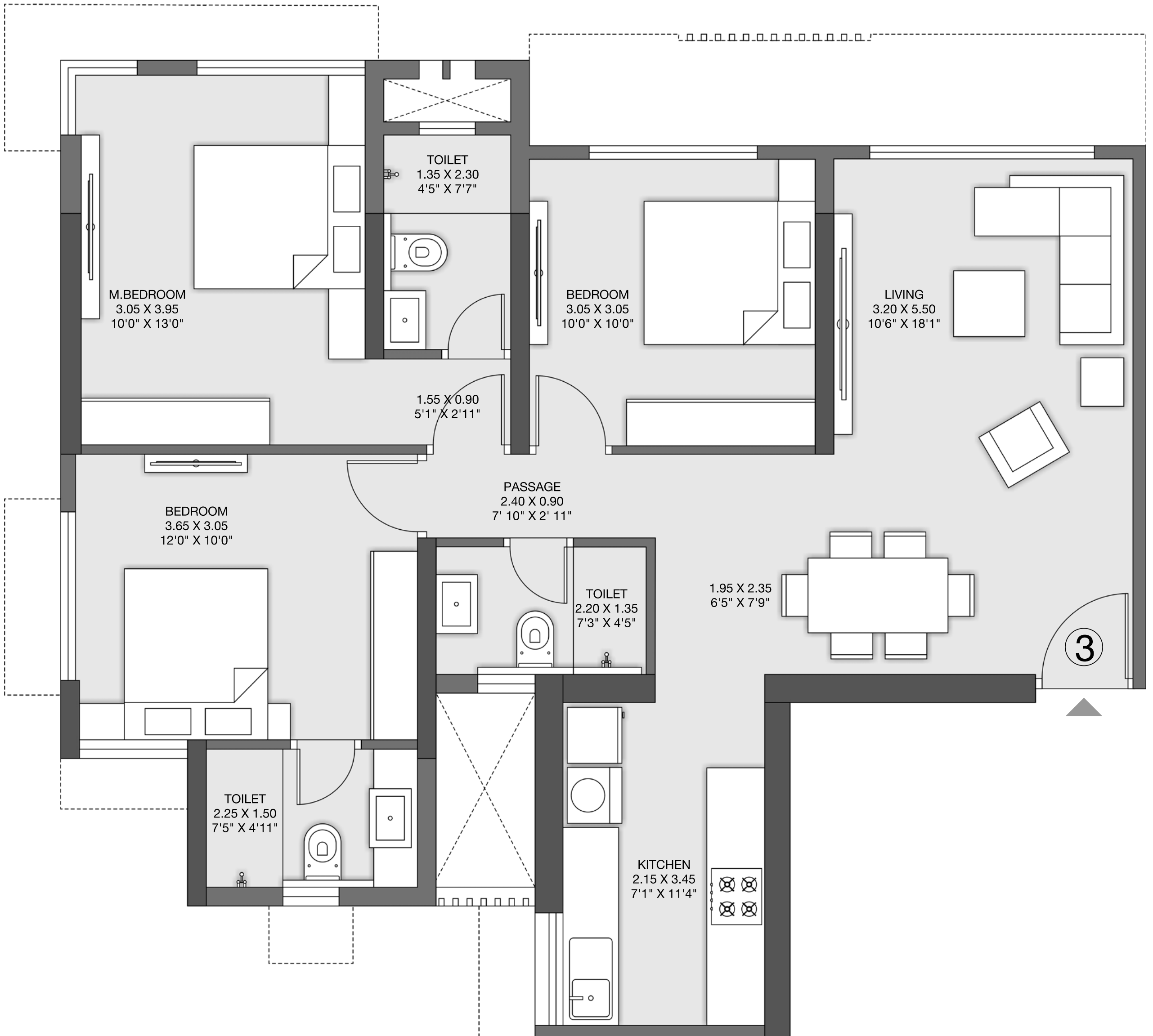
The furniture, decorative items, etc. shown in the plan are only suggested and the same are not intended or obligated to be provided as per specifications and/or service in the flat/unit and does not form part of the standard specifications. The plan represents unit series 2 of wing A 1 Sq m = 10.764 Sq ft.



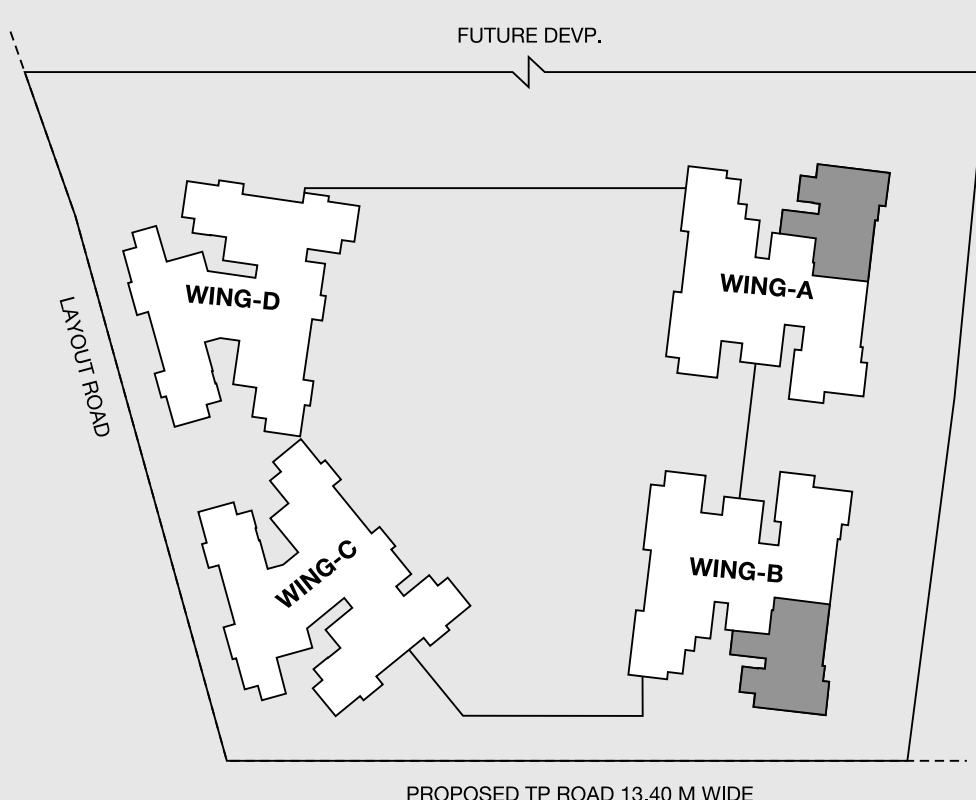
# GODREJ NEST

KANDIVALI, MUMBAI

## Unit Plan



## 3 BHK



The furniture, decorative items, etc. shown in the plan are only suggested and the same are not intended or obligated to be provided as per specifications and/or service in the flat/unit and does not form part of the standard specifications. The plan represents unit series 3 of wing A 1 Sq m = 10.764 Sq ft.

# A LEGACY OF TRUST

Godrej Properties brings the Godrej Group philosophy of innovation, sustainability, and excellence to the real estate industry. Each Godrej Properties development combines a 123-year legacy of excellence and trust with a commitment to cutting-edge design and technology.

In recent years, Godrej Properties has received over 250 awards and recognitions, including 'The Most Trusted Real Estate Brand 2019', from the Brand Trust report, 'Real Estate Company of the Year' at the 9th Costruction Week Awards 2019, 'Equality and Diversity Champion' 2019 at the APREA Property Leaders Awards, 'The Economic Times Best Real Estate Brand 2018' and the 'Builder of the Year' at the CNBC-Awaaz Real Estate Awards 2018.

## IN RECENT YEARS, GODREJ PROPERTIES HAS RECEIVED OVER 250 AWARDS & RECOGNITIONS



THE ECONOMIC TIMES  
**2018**



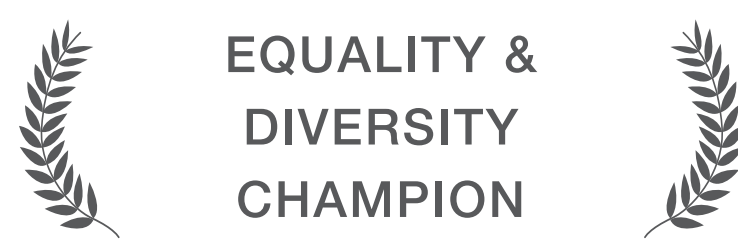
BRAND TRUST REPORT  
**2019**



CNBC-AWAAZ REAL ESTATE AWARDS  
**2018**



9TH CONSTRUCTION  
WEEK AWARDS  
**2019**



APREA PROPERTY  
LEADERS AWARDS  
**2019**



GODREJ TRANQUIL, KANDIVALI



GODREJ PRIME, MUMBAI



WOODS AT GODREJ CITY, PANVEL



GODREJ EMERALD, THANE

Artist's Impression. Not an actual site photograph

Registered Office: Unit No. 5C, 5th Floor, Godrej One, Pirojshanagar, Eastern Express Highway, Vikhroli East, Mumbai - 400 079.

MahaRERA Registration No. for the projects "Godrej Emerald Thane": P51700000120, "Godrej Tranquil Kandivali": P51800000812, "Godrej Prime": P51800000519. This project is being developed by Godrej Redevelopers (Mumbai) Pvt. Ltd. (Subsidiary of Godrej Projects Development Limited), "Godrej City Panvel Phase I": P52000001298. Woods collectively refers to the names of the Towers in Godrej City Panvel Phase 1 i.e. Woods - Tower 1, Woods - Tower 2 and Woods - Tower 3. All available at website: <<http://maharera.mahaonline.gov.in/>>

MahaRERA No. P51800022159 available at website: <http://maharera.mahaonline.gov.in>. The project is being developed by Shivam Megastructures Private Limited and Godrej Properties Limited is the Development Manager. The project is mortgaged to PNB Housing Finance Limited and Yes Bank Limited.

The sale is subject to terms of the Application Form and the Agreement, including specification. Recipients are advised to apprise themselves of the necessary and relevant information of the project / offer prior to making any purchase decisions. The official website of Godrej Properties Ltd. is [www.godrejproperties.com](http://www.godrejproperties.com). Please do not rely on the information provided on any other website.

IN PARTNERSHIP WITH



MahaRERA No. P51800022159 available at website: <http://maharera.mahaonline.gov.in>. The project is being developed by Shivam Megastructures Private Limited and Godrej Properties Limited is the Development Manager. The developer has obtained project finance from Punjab National Bank and the erstwhile lender i.e. Yes Bank has already released its charge from the project and the developer is in the process of having the release documents registered towards this end.

Site office: Godrej Properties Sales Pavilion, Near Lokhandwala Circle, Opposite Living Essence Building, Off Akurli Road, Lokhandwala Township, Akurli Road, Kandivali (East)

The sale is subject to terms of the Application Form and the Agreement, including specification. Recipients are advised to apprise themselves of the necessary and relevant information of the project / offer prior to making any purchase decisions. The official website of Godrej Properties Ltd. is [www.godrejproperties.com](http://www.godrejproperties.com). Please do not rely on the information provided on any other website.

The dimensions, images, furniture, accessories, paintings, additional fittings/fixtures, decorative items, false ceiling including finishing materials, shades, sizes and colour of the tiles and other details shown in the image are only indicative in nature and are only for the purpose of illustrating/indicating a possible layout and do not form part of the standard specifications/amenities/services to be provided in the flat. All specifications of the project/flat shall be as per the final agreement between the Parties. Recipients are advised to apprise themselves of the necessary and relevant information of the project prior to making any purchase decisions.