



ModiSpaces

Real Estate Pvt. Ltd.

Sales Office

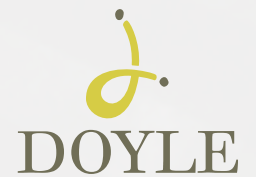
Keshav Mansion, Evershine Nagar,
Off Link Road, Malad (W),
Mumbai - 400 064. INDIA
Tel : +91 22 2880 9137
Mob: +91 8976460464
SMS : 'MODISPACES' to +91 8976460464

Email : project@modispaces.com
nriservice@modispaces.com

Head Office

Prem Sagar, 57 Swatika Co-op Society,
N.S. Road No. 3, Juhu Scheme, Vile Parle (E),
Mumbai - 400 056. INDIA
Tel : +91 22 2613 4824
Visit us at : www.modispaces.com

ModiSpaces



7 Storey Tower
1 / 2 / 3 BHK Homes
Orlem, Malad (W)



DOYLE

Your new neighbour in the vicinity

There is only one way to lead a better and dignified life when it comes to enriching it with more comfort and luxury. Improve your outlook on life. Welcome to Doyle it offers a beautiful urban atmosphere with lush and fabulous ambience. One of the finest addresses in Malad. Experience lifestyle that is part of this extraordinary place.

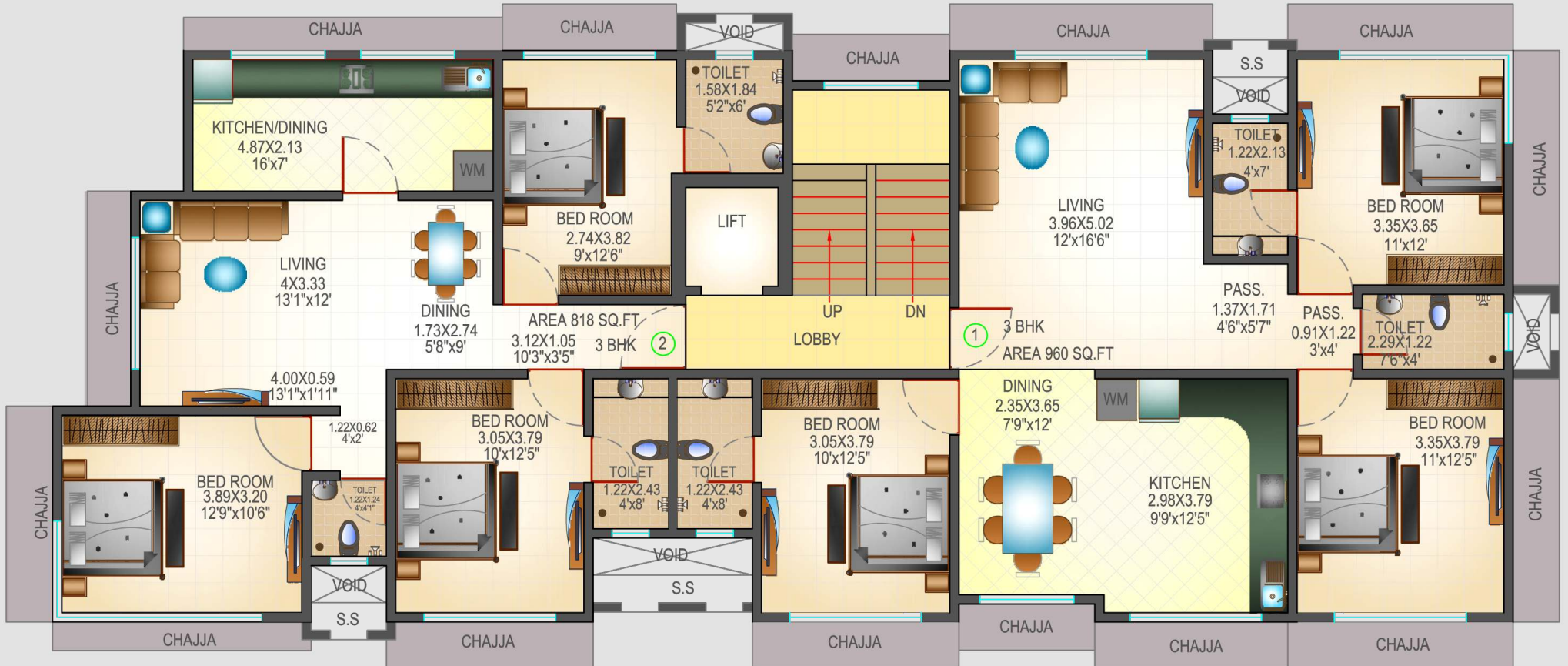
Project Highlights:

- 7 Storey Tower
- 1/ 2/3 BHK Luxurious Flats
- Low maintenance
- Centrally Located
- Parking space



Sale Plan

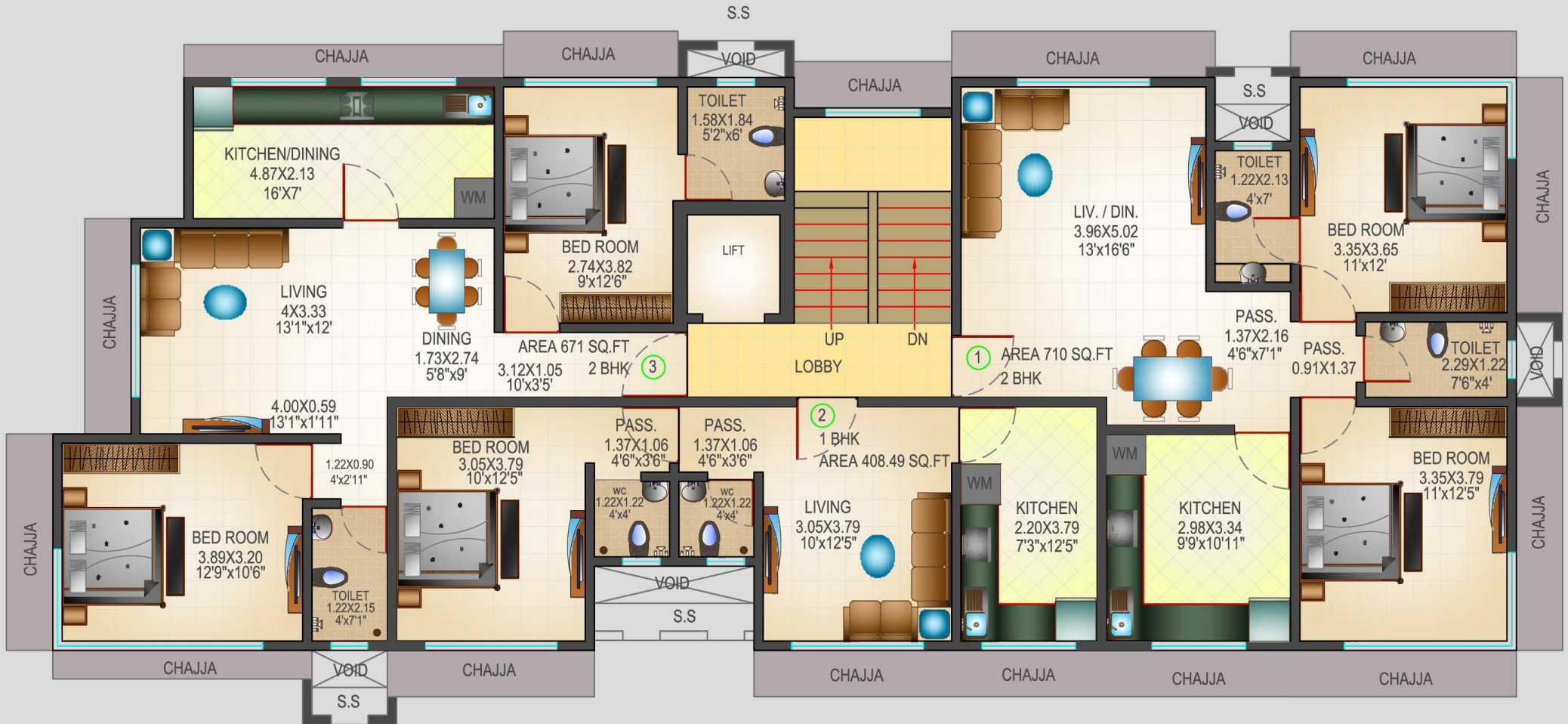
ROAD



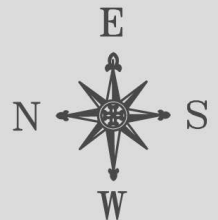
4TH FLOOR PLAN



Sale Plan



5TH TO 7TH FLOOR PLAN



Amenities

Home

- Best quality vitrified tiles (Kajaria / Johnson / Nitco or equivalent) in entire flat with 3" vitrified
- Heavy gauge anodized aluminum sliding windows with glass in all rooms with provision for AC.
- Concealed fire resistant copper wiring (Finolex / L&T / Polycab or equivalent) with separate circuit for each room with modular switches of reputed make (Anchor, Legrand, Swiss or equivalent)
- Provision for ceiling fan with fans in all rooms and kitchen
- Adequate light and power points in all rooms, kitchen, living and bathroom, 2 way switches in bed room
- Main switch and sub main switch of reputed make (Anchor or equivalent)
- Air Conditioner drain water provisions.
- Intercom facility connecting to security cabin from living
- Video door phone
- Cable, Television, Telephone, and A.C point in all room and living room
- Main door in CP teak wood frame, Kenwood block board shutter, both side veneered / laminated with Godrej / Yale or equivalent key night latch, handle, viewer and lower bolt
- Number plate outside each house

Kitchen

- Granite Plat Form with stainless steel sinks (Nirali or equivalent) +service platform.
- Piped Gas System in Kitchen if possible
- Enameled painted, symmetrical ms (heavy gauge) safety Grill on room and kitchen windows matching all the floor
- Exhaust fan in bathroom and kitchen
- Water filter point in kitchen
- Enameled painted, symmetrical MS (heavy gauge) safety Grill in Kitchen

Bathroom

- Designer Bath fitting of Jaguar (C.P) or equivalent make in all toilets
- W.C., wash basin (Hindware, Plumber or equivalent)
- Exhaust fan in bathroom and kitchen
- Geyser will be provided in all toilets
- Concealed plumbing of good quality heavy-duty GI/PVC pipes (Jindal or equivalent).
- Antiskid tiles in flooring of toilet, bathroom of make (Kajaria/Johnson, Nitco or equivalent)
- Glazed tiles up to ceiling in bathroom of make (Kajaria/ Johnson/Nitco or equivalent)
- Toilet windows of granite, with louvers of Anodized aluminum with opaque glass.
- Enameled painted, symmetrical MS (heavy gauge) safety Grill in Bathroom
- PVC or GI pipes (Tata / Jindal or equivalent) for domestic and flushing water

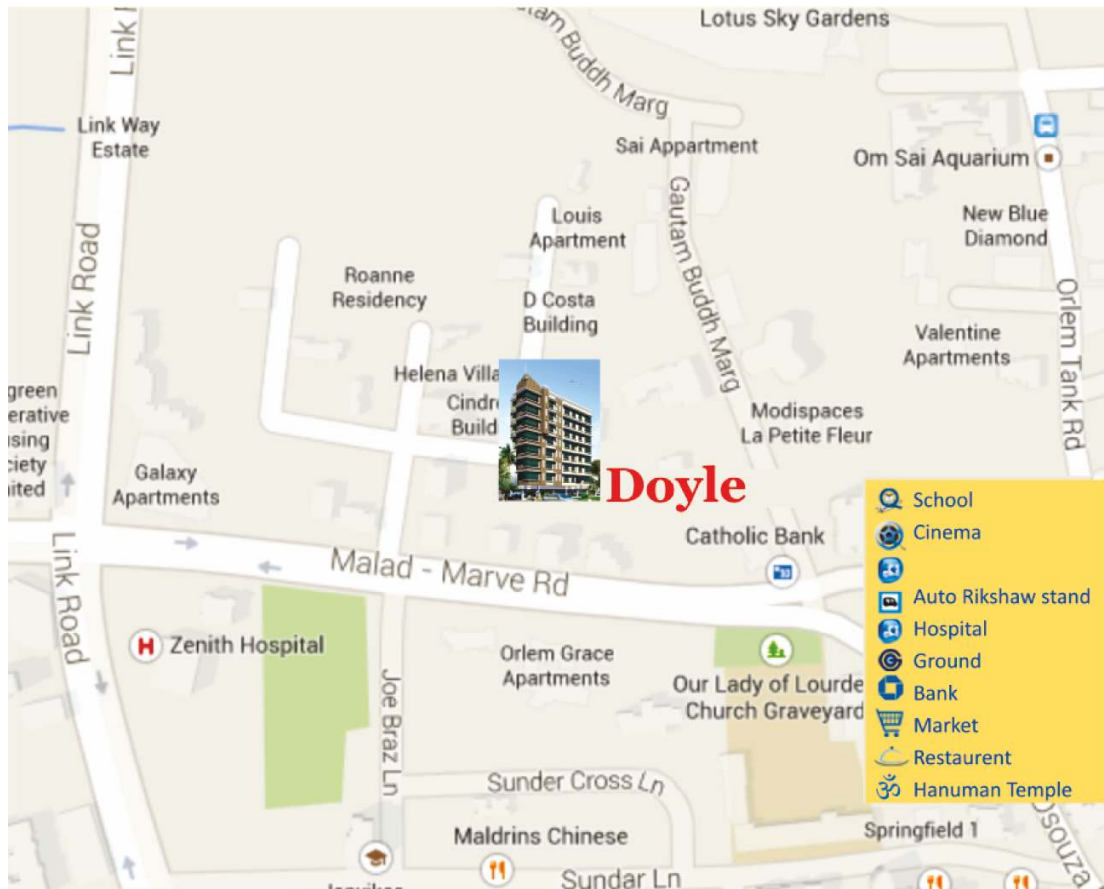
Compound and Common Area

- Name plate display in entrance area
- Well-designed grand entrance lobby with granite
- Automatic high speed Elevators of (Otis / Schindler/ Kone or equivalent)
- CCTV Arrangement in entrance lobby area
- Watchman's cabin with intercom phone
- Common servants toilet
- Elaborate white ants treatment to be carried out for foundation and plinth level during construction.
- Wrought iron decorative main gate
- D.G. generator backup for lift, staircase lobby and common area lighting.

Building Elevation

- Earth Quake resistant building.
- Modern building elevation. Best of elevation from Reputed Architects
- Rain water harvesting system
- Vaastu Compliant building
- Fire fighting system

Location Map



ModiSpaces Doyle Site Office :

Lourdes Colony, Orlem, Malad West, Mumbai. India. Tel.: +91 22 28809537 Web: www.modispaces.com

For Project Inquiry email us @ project@modispaces.com