



FUSION TOWERS

2 RHK HOMES AT HINJAWADI



Spaces with
human touches



Just take a pause for a minute and think.

So much of our every day goes into perfecting things.

From reaching work on time, to giving our best at work.

From spending time with friends, to dinner with family.

From taking care of our family, to taking care of ourselves.

From smiles, to counting miles, life speeds ahead of us.

Wouldn't life become smoother if we had something that adds value

to it by becoming an indispensable part of it?

By making us smile and allowing us to reap the best memories from it?

We all wish for that one value addition that is a fusion of rooted values,
and wonderful comforts!

We all wish for that value in a place we call a home.

And if you too wish for that value, your search ends here.

Welcome to Fusion Towers, by Rama Group.

Where every space is a...

Value for Life!



Infusing culture
and modernity,
for you and
your family!





Value for Happiness

Pune is a city bustling with life and youth, but still stands rooted in culture and traditions. Crafted to suit the best of both worlds that this city loves, Fusion Towers offers an impeccable balance of comforting indoor spaces and enriching outdoor spaces.

Located at Hinjawadi, Fusion Towers has spacious 2 RHK residences with amenities that add value to your everyday life. Rama Group has always believed in building homes that enhance lives. Along with balancing cultural understanding, Fusion Towers brings a living-experience that will become a home you value for a lifetime!

Project Highlights

- 5+ Acre project at Hinjawadi
- More than 550 exclusive 2 RHK homes
- 6 Towers
- Beautifully planned landscape
- Thoughtful spacious indoors
- Vehicle-free zone
- Elegant architecture

Disclaimer - Currently only Phase I under development.
Phase I - "A & B building" MahaRERA No.: P52100018013





Infusing art and heart,
to create a place
called home!





Value for elegance

1. Elegantly designed entrance gate with a feature wall and security cabin
2. Covered designer bus stop with glass railing for pick up and drop
3. Lawn mound with feature wall
4. Welcome entrance plaza
5. Cycling track
6. Ample vehicular parking
7. Multipurpose court
8. Party lawn
9. Seating plazas within landscaped areas
10. Stage for performing arts
11. Club house
 - i. Open library at lounge
 - ii. Indoor games room
 - iii. Gymnasium
 - iv. Steam room (Separate for men and women)
 - v. Infinity swimming pool / kids' pool
 - vi. Yoga deck
12. Open gym (On terrace)
13. Practice cricket pitch
14. Practice basketball court
15. Kids' play area with seating
16. Toddlers' play area with seating
17. Graffiti wall
18. Pergola seating with creepers
19. Climbing wall
20. Floor chess, floor snakes & ladder
21. Acupressure pathway
22. Festive plaza / skating rink on landscaped podium
23. Sculpture
24. Lawn area with greenery on podium
25. Pet walk area

Artist's Impression

Disclaimer - Currently only Phase I under development.
Phase I - "A & B building" MahaRERA No.: P52100018013





Infusing smiles
and delights,
so that you live
to the fullest!



Value for Convenience

Located in the neighbourhood of Melange Residences by Rama Group, Fusion Towers makes the most of Hinjawadi's connectivity and conveniences. One of the most well-known and flourishing IT destinations, Hinjawadi is the ultimate growth-friendly location for a home. When you live at a stone's throw from work, life also seems so much more blessed and fulfilling.

Fusion Towers, offers complete 360-degree lifestyle connectivity. Leisure, education, and health surround you along with IT infrastructure, making your life truly value-rich and smooth. Welcome an amazing fusion of life, lifestyle, and many smiles here!

The Pune Metropolitan Region Development Authority (PMRDA) has decided to extend the Hinjawadi to Shivajinagar Metro corridor till Hadapsar. This proposed Metro Station is just 2 mins from Fusion Towers. This is sure to make transport a true value for convenience.





Important Areas

BANKS

- Axis Bank - 3.2 km
- ICICI Bank - 6.5 km
- YES Bank - 6.8 km
- HDFC Bank - 8 km

HOTELS

- Hyatt Place - 7.5 km
- Courtyard Marriott - 8 km
- Lemon Tree - 8 kms
- The Gateway by Taj - 9 km
- VITS Hotel - 14.9 km
- Holiday Inn - 15.5 km

HEALTHCARE

- Hinjawadi Hospital - 8 km
- Ruby Hall Clinic - 8 km
- Golden Care Hospital - 9.7 km
- Lifepoint Multispecialty Hospital - 11.4km
- Aditya Birla Hospital - 13.7 km

EDUCATION

- Pawar Public School - 2.5 km
- Little Big World - 3 km
- Mercedes Benz International School - 7.9 km
- Symbiosis Institute of International Business - 8.4 km
- Blue Ridge School - 9.5 km

EATOUTS

- Ancient Hyderabad - 1.9 km
- Red Chilly Kitchen - 1.5 km
- Lalaz Mini Punjab - 5.8 km
- Hyderabad House - 6.9 km
- Nandanvan Hotel - 7.1 km
- Mezza 9 - 7.3 km
- Kiva Terminus - 8.3 km
- Mainland China - 8.4 km

CONVENIENCE

- Hinjawadi Fire Station - 1.8 km
- Proposed Metro Station - 2 km
- Sahyadri Car Service - 5.2 km
- Pet Sitters - 5.5 km
- Swaraj Petroleum - 6.6 km
- Shell Petrol Pump - 9.5 km

MALLS

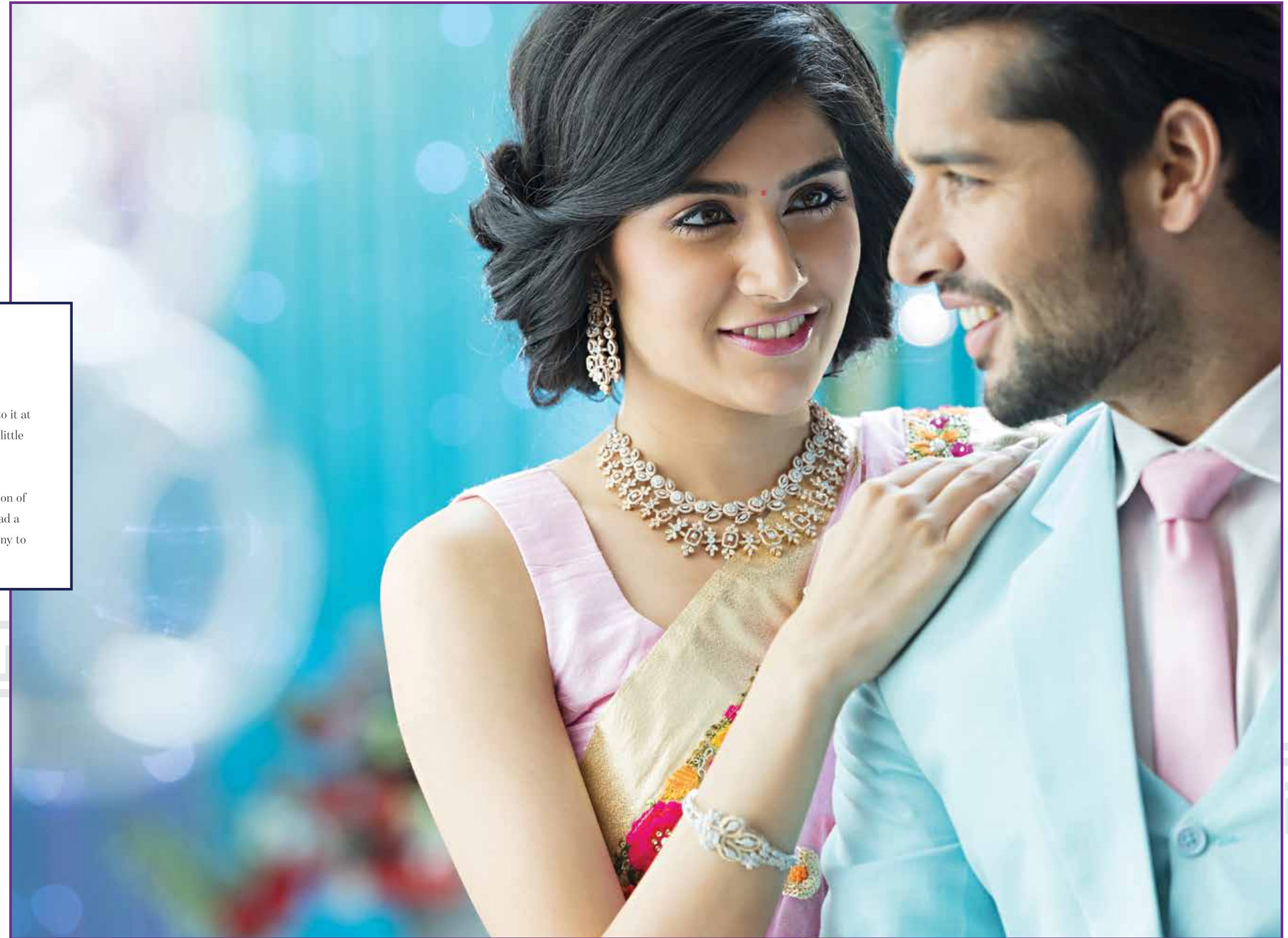
- Brand Factory - 8 km
- E-Square - 8 km
- Xion Mall - 8.1 km
- D-Mart - 8.2 km
- Suratwala Mark Plazzo - 8.8 km
- White Square - 9 km



Value for Smiles

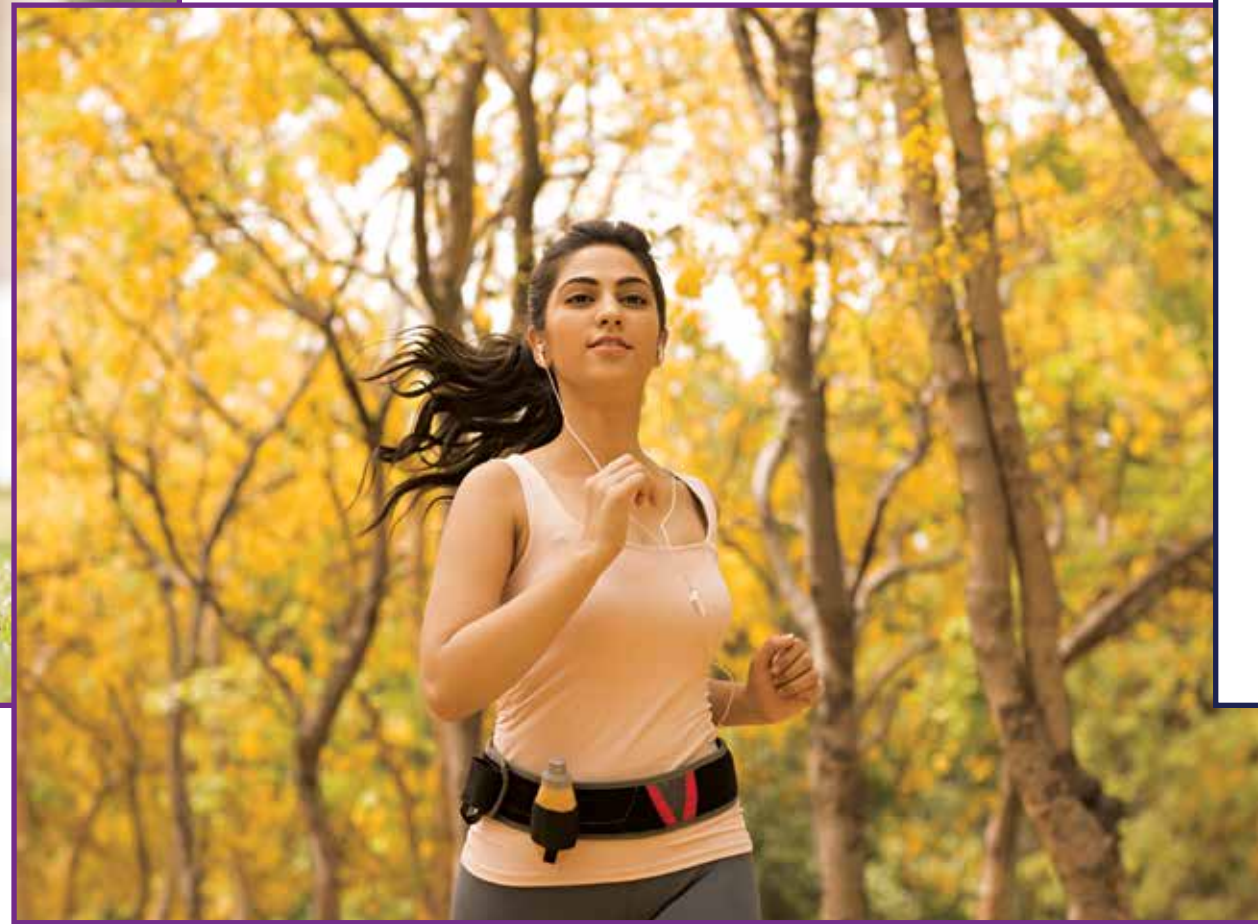
A home is a place where we find solitude, but it is also where we recharge ourselves. We come back to it at the end of each day, but we also begin our day here. Fusion Towers has been designed keeping these little details in mind. Every amenity works to add more meaning and delight to life.

There are indoor playing areas, but there are also zones for the youth and fitness enthusiasts. A fusion of thoughtfully planned amenities ensures everyone feels special living here. Rama Group has always had a rich legacy of building modern, resourceful, and architecturally remarkable homes that are a testimony to their passion, and Fusion Towers is no exception!






CLUB FUSION



Value for Wellness

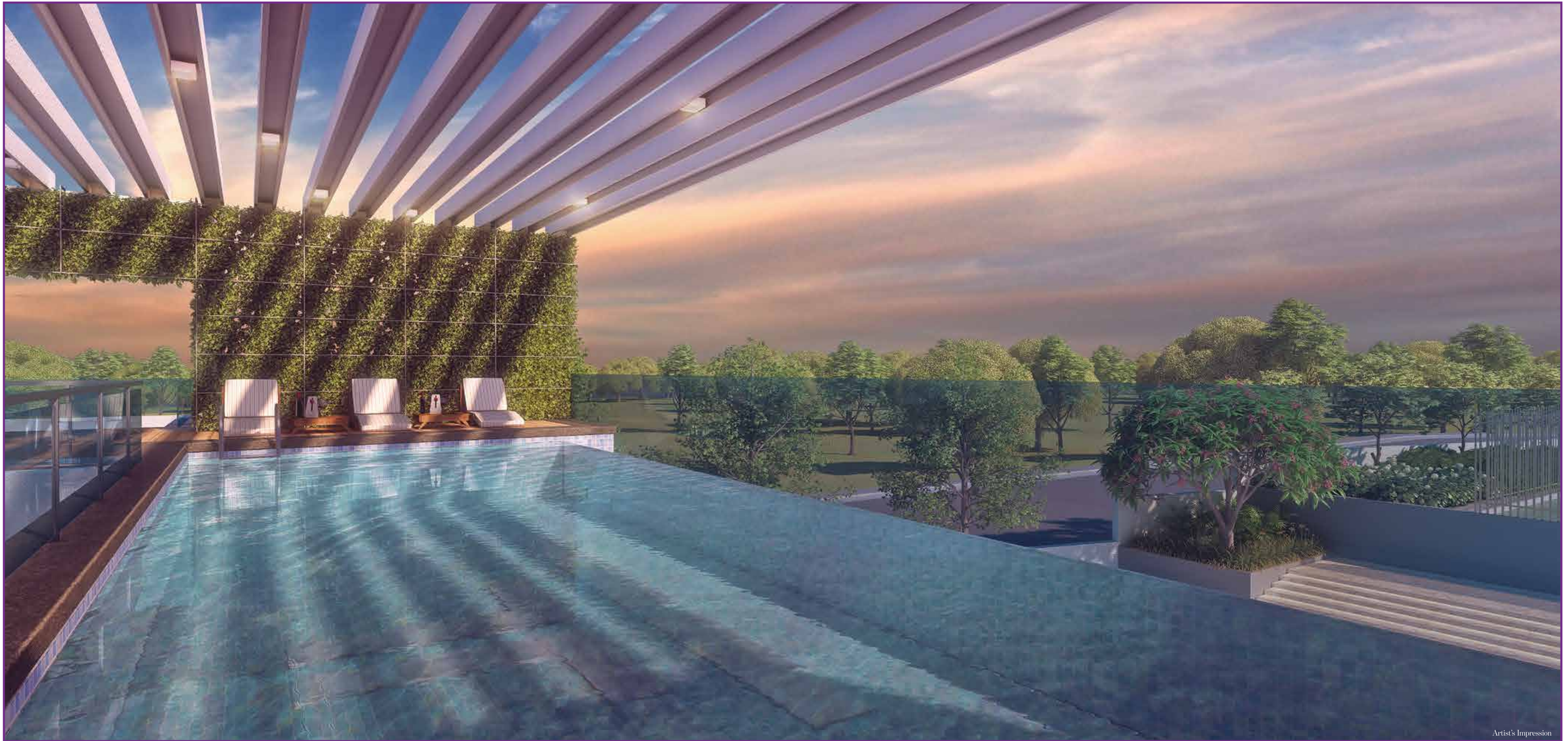
- Club House
- Gymnasium
- Steam Room
- Infinity Swimming Pool
- Yoga Deck
- Practice Basketball Court
- Practice Cricket Pitch
- Cycle Track
- Acupressure Pathway
- Pet Walk Area
- Open Gym
- Multipurpose Hall
- Indoor Games Room



Value For Kids

- Kids' Play Area
- Toddlers' Play Area
- Kids' Pool
- Rappelling Wall
- Skating Rink
- Floor Chess
- Floor Snakes & Ladders
- CCTV at Kids' Play Area
- Grafitti Wall
- Vehicle-Free Play Zone
- Covered Designer Bus Stop for Pick-N-Drop





Value for Community

- Party Lawn
- Pergolas with Lush Green Surroundings
- Seating Plazas within Landscaped Areas
- Stage for Performing Arts
- Multipurpose Hall
- Intercom
- Festive Plaza on Landscape Podium
- Provision of Adequate Toilets on Landscape Podium & Parking Areas
- Ample Vehicular Parking
- Car Washing Area



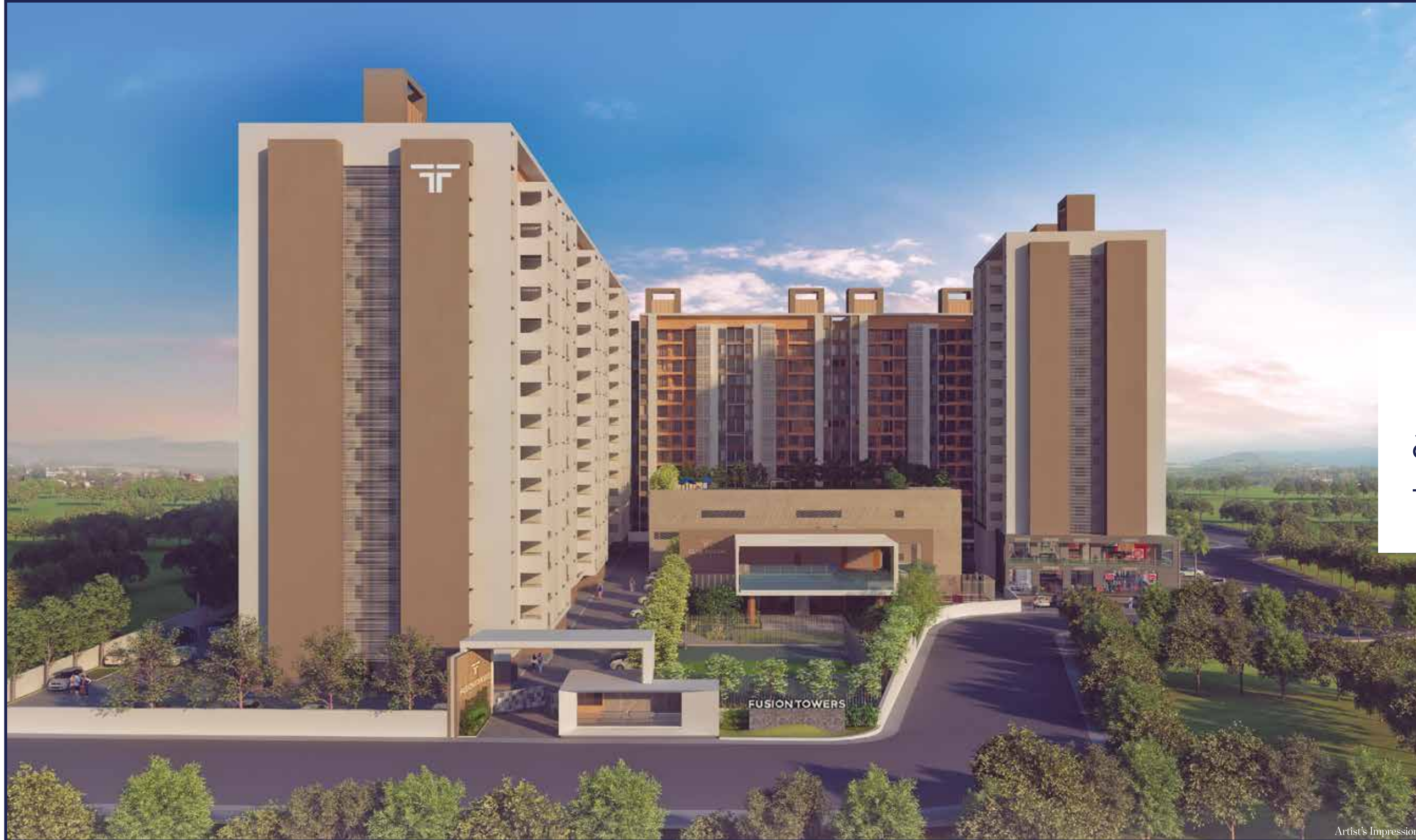
Value for Beauty

- Elegantly Designed Entrance Gate with a Feature Wall
- Attractive Entrance Plaza
- Covered Designer Bus Stop with Glass Railing for Pick-N-Drop
- Sculptures
- Well-Landscaped Open Spaces
- Lawn Area with Greenery on Parking Podium

Value for Security

- CCTV at Children's Play Area
- CCTV Surveillance at Common Areas
- Intercom & Security Cabin
- Vehicle-Free Kids' Play Area





Infusing beauty and functionality, to make every day perfect.



Value for Functionality

With every home we design, along with the aesthetics, functionality is of key importance to us. Fusion Towers, by Rama Group too, brings a symphony of art and quality interiors with an eye for detail.

Foundation

- Foundation as per RCC Consultant's recommendations

Structure

- Superstructure typical floors in Aluform System
- All flats have east-west entry

Flooring

- Vitrified tile flooring in all rooms with skirting
- Anti-skid ceramic flooring in adjacent terrace

Doors

- All doors, shutters laminated on both sides
- Main door and bedroom door frames in scantling
- Door frames of toilet in granite and wood
- Elegant cylindrical locks for all doors
- Biometric access for main door

Electrical

- Concealed electrification with copper wiring & modular switches
- Provision of telephone point in living and master bedroom
- Provision of TV point in living and master bedroom
- Provision of AC point in living and all bedrooms
- DB Box with MCB in Flat
- Inverter provision
- Individual video door phone with intercom
- Exhaust fan provision in kitchen and toilets
- Electrical provision for geysers
- Electrical provision for water purifier in kitchen

Painting

- Superior (OBD) paint for internal walls
- Textured paint for external walls

Windows

- 3-Track powder-coated aluminium windows with mosquito net
- Full height windows in living room
- MS safety grills for windows
- Granite sill for windows at bottom

Kitchen

- Granite kitchen otta with stainless steel sink
- C-shape kitchen otta

Toilets

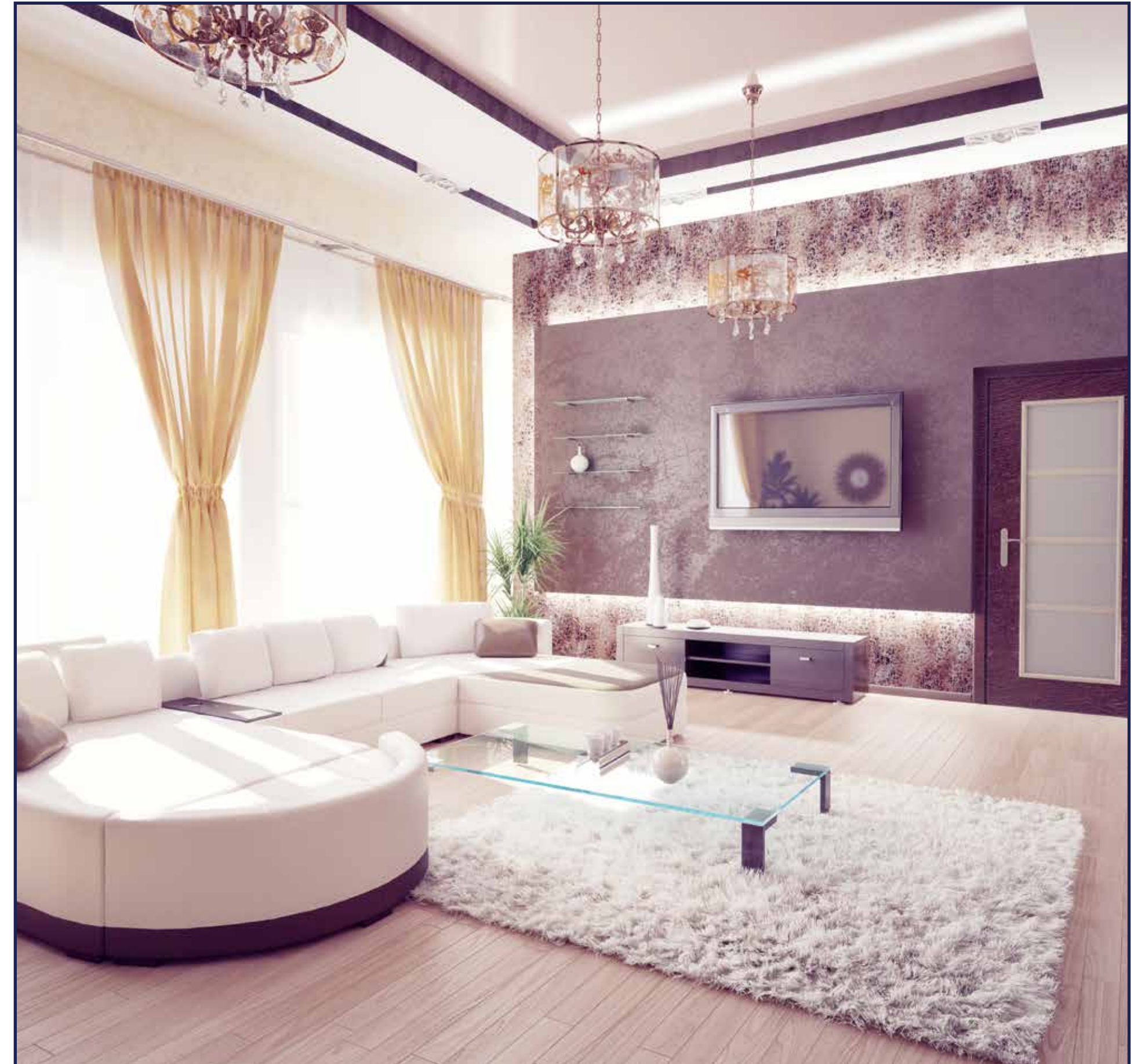
- Ceramic tile flooring and dado up to the lintel level and hot and cold water diverter unit in toilet
- Wall-mounted commode with concealed cistern for toilet
- Acrylic ceiling in toilets

Plumbing

- Plumbing provision for water purifier in kitchen
- All sanitary fittings of high quality
- Wall-mounted commode with concealed cistern
- High quality CP fittings of Jaquar / equivalent make
- Concealed plumbing, diverter for shower
- Solar water connection for master bedroom toilet only
- Plumbing provision for geyser

General

- Video door phone
- Intercom
- Provision of DTH connection
- Generator backup for common areas



Disclaimer: The aforesaid specifications are general and will be provided in the residential tenement as suitable in tenement as per the discretion of the promoter. Any additional specification or work will be charged extra. No rebate will be given for cancellation or omission of any items which is agreed as aforesaid. Any additional charges will not be incorporated in the flat.



Infusing experience and passion, by creating homes of substance.



An Award Winning Proposition

Value for 27 Years of Excellence

By building homes across the residential & commercial spectrum of Pune and PCMC, RAMA has grown as a leading name in the Construction & Real Estate segment since the past 27 years.

Always searching for new challenges, the group has evolved through innovation. They have established the perfect balance of homes that provide quality living, along with resourcefulness. The RAMA Group has made this dream a reality, simply by using the best talent in planning, designing, and construction.

Compliance to universally recognised benchmarks, best ethical practices, and more than over 10,000 happy families have made every project a success. RAMA Group continues to make its mark in the hearts of home buyers and home owners even today!

- 27 Years of Legacy
- 40 Completed Projects
- 10,000 Happy Families
- 9 Prestigious Awards
- 10 Million sq. ft. Delivered



Star Realty Award
2011-12



Power Brands Rising Leadership Award
2012



Power Brands - Rising Star
2012



Brands Academy Entrepreneur Award
2012



Admired Brand Award
2014-15



Admired Leader Award
2014-15



India's Most Admired Brand
2016-17



India's Most Admired Business Leader
2016-17



Accommodation Times Award
2018





CORPORATE OFFICE ADDRESS : Rama Corporate House, Rama Equator, 10th Floor, Near City International School,
Morwadi, Pimpri, Pune 411018. Phone : 020-2747 3001/2/3/4/5/6

SITE ADDRESS : Plot A1, S.No. 41/6, Opp. TCS Gate No. 2, Next to Melange Residences, Bhoirwadi, Hinjawadi Phase 3, Pune - 411057

The project has been registered via MahaRERA registration No.: P52100018013 and is available on the website <https://maharera.mahaonline.gov.in> under registered projects

Disclaimer : The materials contained in this brochure should not be considered an offer and are solely of an informational nature. The references, images, advertising or declarations made herein are informational only, and not to be interpreted in any other manner. The developer (Rama Group and/or its affiliates and/or its subsidiaries) reserves the right to make any modifications to the materials, specifications, plans, designs and delivery of the residences advertised here, without any prior notice. All of the specifications contained herein, including technical, promotional, related to images or of any other nature are the property of Rama Group and/or its affiliates and/or its subsidiaries and such specifications may not be used by any person, including an individual entity, without the prior written consent of Rama Group and/or its affiliates and/or its subsidiaries.