



We create the space.
Everything else is left to your imagination!

PRIDE
VALENCIA

Celebrate Space



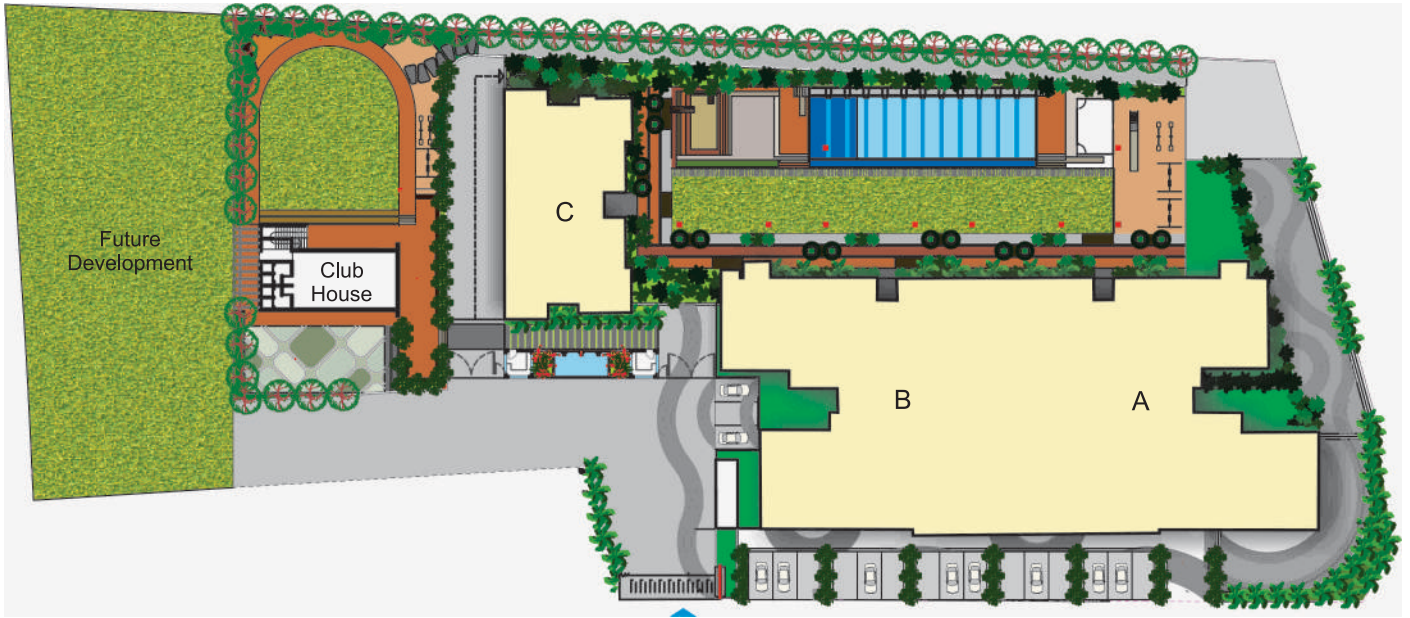
Pride Valencia 2 & 3 BHK 3 side Open Homes at Baner

Pride Valencia is such a project that defines openness and luxury. Valencia offers well designed 2 and 3 BHK apartments located in Baner with lush green surrounding along with sprawling decks, framing a picturesque view of the serene horizon.

We all, at a certain point of time, be in the need of space. Space for our minds to wander about, for our eyes to run through and feel a sense of freedom. Valencia incorporates in its structure the marvel of space management. The structures are designed in such a way that it ensures sprawling space and negates confinement, giving a feeling of infinity, bringing you opportunities to celebrate space.



LAYOUT





Common Amenities and Features

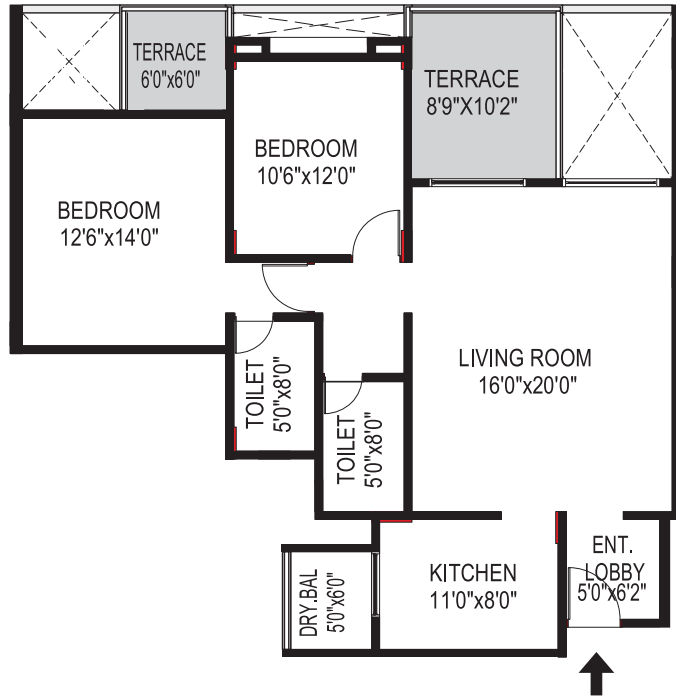
- Club House
- Swimming Pool
- Air-conditioned Gymnasium
- Children's Play Area
- Community Hall with Party Lawn
- Genset backup for common areas
- Designer Lobbies
- Concrete/paved Roads
- Fire-Fighting System
- Ample Parking
- Piped Gas Connection
- Automatic Lift with Genset backup



Specifications

- Vitrified flooring 800 x 800 with 3" high skirting
- Wooden flooring in master bedroom
- Anti skit flooring in toilet & private terrace
- Modular kitchen with top unit hob & chimney
- Provision of plumbing inlet, outlet & electrical points for washing machine, microwave, refrigerator, exhaust fan etc
- Reticulated gas system
- Concealed plumbing with hot & cold arrangements for shower & wash basin
- Single Lever Jaguar / equivalent make C P fittings
- Kohler / Euro / Equivalent make sanitary ware
- Jaguar / equivalent make glass shower partition in all toilet
- Solar hot water provision in master toilet
- Concealed copper wiring with Legrand /equivalent make modular switches
- Provision of telephone / broadband connectivity in living room & all bedrooms
- Provision of TV points in living & master bedroom
- Provision of electrical power point for inverter
- Aluminum powder coated / anodized sliding windows & terrace doors with mosquito net & MS grills for windows
- Laminated door shutters for all bedroom & toilets and veneer polished main door
- Adjustable aluminum powder coated Louvered windows for all toilets with provision of exhaust fan
- Home automation access control in apartment
- Touch screen button panel
- Panic switch in each flat
- Gas leakage detector
- Intercom facility from flat to flat & flat to security cabin & main entrance lobby

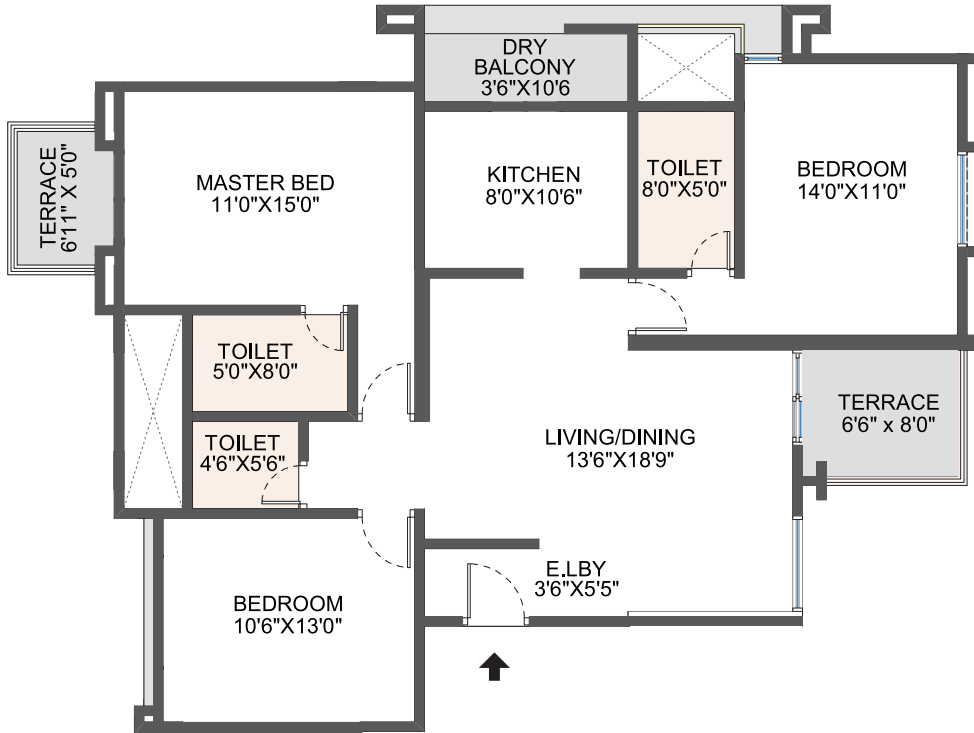
A, B BUILDING PLAN



2 BHK

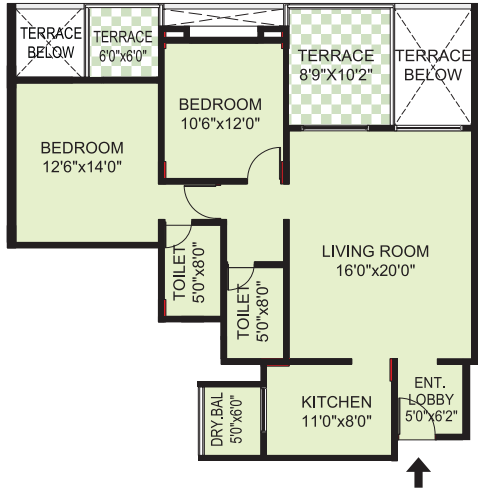
	2 BHK	SQ.FT	SQ.MTRS.
CARPET		1052	97.73
SALABLE		1420	131.92

C BUILDING PLAN



CARPET AREA SQ.FT	TERRACE SQ.FT	TOTAL AREA SQ.FT	SALEBAL AREA SQ.FT
1053.06	84.47	1138	1536

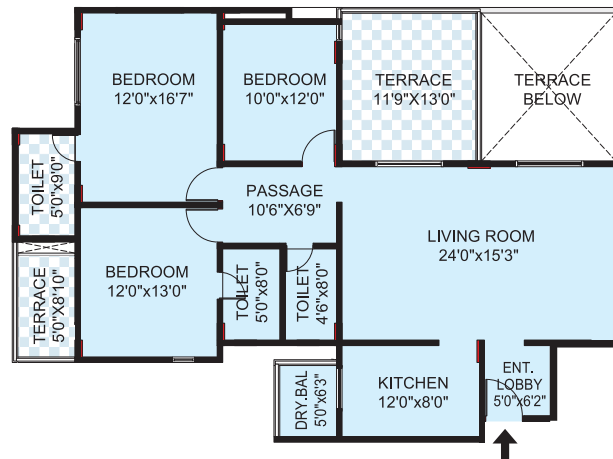
PLAN



2 BHK



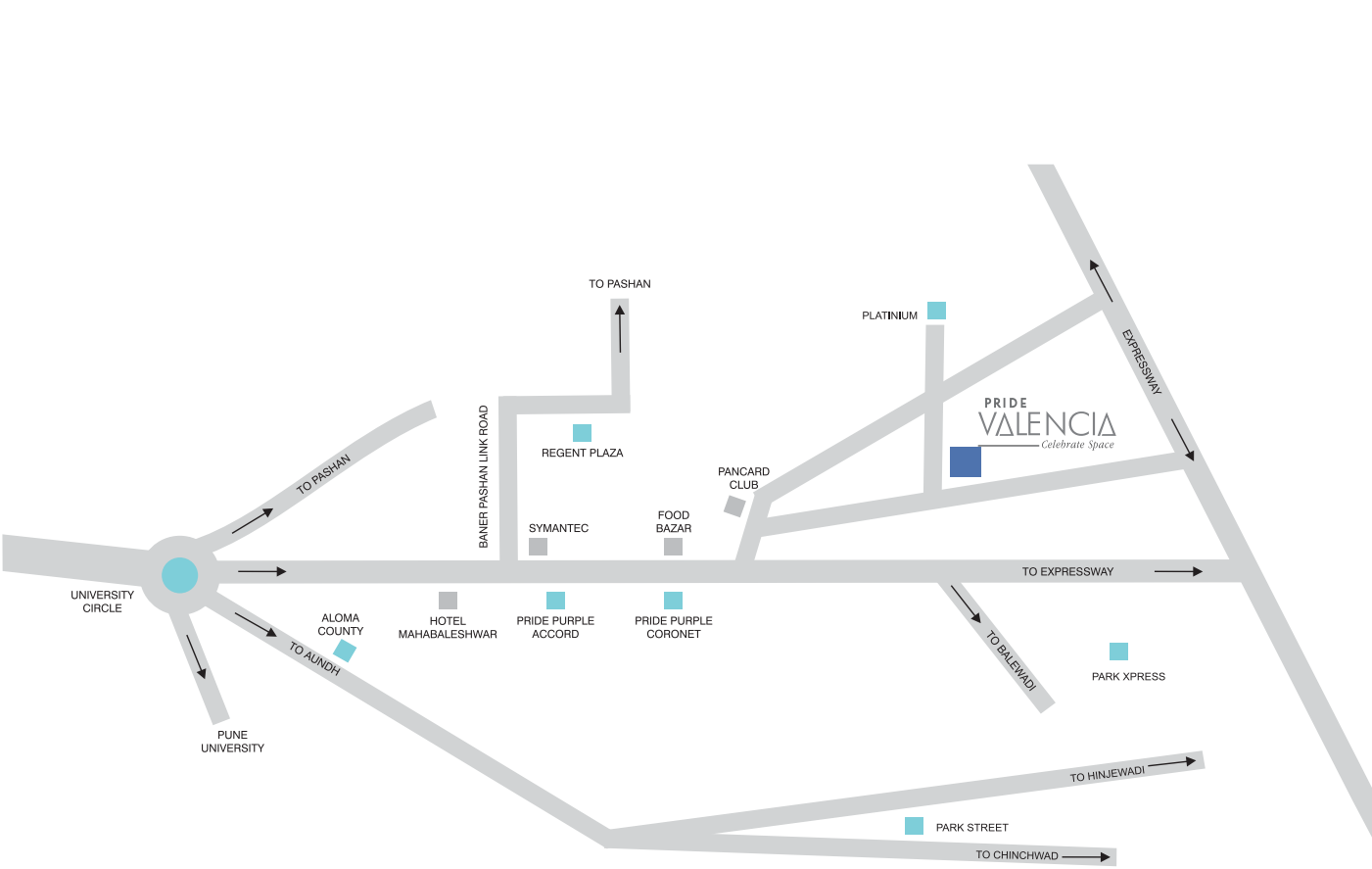
3 BHK



3 BHK

2 BHK- 1420 sq. ft. | 3 BHK- 1600, 1910 sq. ft.

Location Map



Our Consultants

Architect: M/S Abhikalkar architect and planners

Landscape Designer: Designterra Landscape Consultant

R.C.C Consultants: Sunil Mutalik & associates

Legal Advisor: Suvarna Shinde

Branding and communication: Limelight communications

A Project by



In Association with



Call: +91-98506 80000

Site: Pride Valencia, Sr. No. 292/5/6/1 & 3, Near Pan Card Club, Baner, Pune-411045.
Call: +91-98506 80000, +91-95611 80000, +9120-65108000. www.pridepurplegroup.com

Note: The contents of this brochure are purely conceptual and have no legal binding on us.
The developers reserve the right to amend the layout, plans, no. of floors,
Areas, elevation, colour scheme, specifications and amenities etc.