



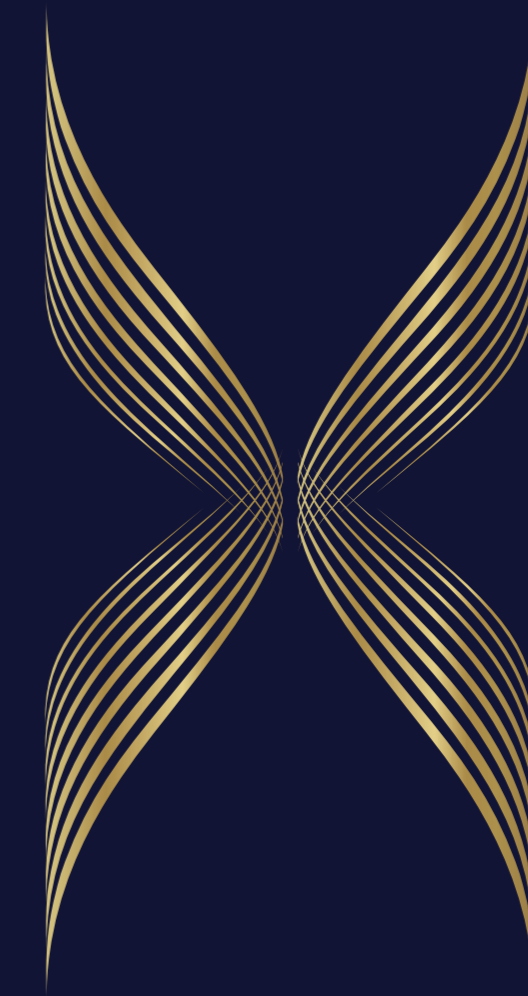
SIGNATUREGLOBAL BUSINESS PARK PRIVATE LIMITED | CIN No.: U70109DL2019PTC346164  
Regd. Off: 13<sup>th</sup> Floor, Dr. Gopal Das Bhawan, 28, Barakhamba Road, Connaught Place, New Delhi - 110001  
Corp. Off.: Ground Floor, Tower A, Signature Towers, South City 1, Gurugram, Haryana - 122002  
[www.signatureglobal.in](http://www.signatureglobal.in)

Disclaimer :

Promoter urges every applicant to inspect the project site and shall not merely rely upon any architectural impression, plan, sales brochure, **advertisements, representations, statements of whatsoever nature** and, therefore, requests to make personal judgment prior to submitting an application for allotment. The Project is being developed in phases, hence, certain facilities/amenities etc, may be used by allottee of other phases. Unless otherwise stated, all the images, visuals, materials and information contained herein are purely creative/artistic and may not be actual representations of the product and/or any amenities. Further, the actual design may vary in the fit and finished form, from the one displayed above. Journey time shown, if any, is based upon Google Maps which may vary as per the traffic at a relevant point of time.

The dimensions specified are inclusive of wall-to-wall measurements, excluding finishing margins. Potential offsets within rooms may occur due to structural elements.

\*Rate mentioned above does not include GST and other statutory charges, if applicable. T & C Apply. 1 sq. mt. = 10.7639 sq. ft.



AN EXPRESSWAY OF REALTY



THE HIGH LIFE.....

# DE-LUXE DXP

AN EXPRESSWAY OF REALTY

Welcome to the distinguished DE-LUXE DXP, an IGBC GOLD Pre-Certified residential development in Sector 37D, Gurugram, Dwarka Expressway that redefines luxury living with its unique features and sustainable design. Comprising 8 towers, ranging from 25 to 40 stories, and featuring 4 units to a core, the development creates a dynamic skyline that accentuates uninterrupted panoramic views.

Sustainability is at the heart of DE-LUXE DXP, evident in its meticulous orientation for optimal natural light and ventilation, thereby minimizing reliance on artificial systems. The project offers a range of configurations, including 3, 3.5 and 4.5 BHK units, each boasting en-suite toilets, spacious living areas, and expansive balconies to foster natural ventilation.

In addition to these features, residents can indulge in the exclusive lounge area within the living room, adding an extra touch of luxury and comfort to their living spaces. Penthouses, featuring private terrace with jacuzzi and double-height living rooms, offer unparalleled extravagance, providing residents with a truly elevated living experience.

DE-LUXE DXP stands out as a double podium based project, a distinctive feature that sets it apart in Gurugram. This innovative design not only adds to the aesthetic appeal but also contributes to the overall functionality of the development. The project sets a benchmark in environmentally conscious architecture, promoting responsible urban living while offering residents a luxurious and sustainable lifestyle.



+ +

# Aedas

+ +

## ECO-ELEGANCE: AEDAS REDEFINES DESIGN ON A GRAND CANVAS.

Crafted by Aedas, a globally renowned architectural firm, the project harmoniously fuses contemporary aesthetics with sustainable ideals. Spanning 16.65625 acres, it features a 1 lakh sqft High-end retail complex with alfresco seating. Strategically positioned towers ensure uninterrupted views, enveloped by wide road networks.

---





# SCULPTING A PREMIUM LIFESTYLE WITH MASTER STROKES.

Renowned designer Sonali Bhagwati brings 30 years of expertise to interior styling. Expertly designed walls, floors and landscaping showcase her touch. Revel in the perfect color combinations that enhance every aspect of your living space.

---





# INNOVATIVE DESIGN MASTERY. TRANSFORMING URBAN LIVING.

Design Forum International's meticulous focus on every detail and exploration of innovative design methodologies is evident in prestigious projects.

---





## SIGNATURE GLOBAL'S TRUSTED ALLY.

Senelac Consultants PVT. LTD. plays a pivotal role in Signature Global's projects by providing MEP (Mechanical, Electrical, Plumbing) consultancy solutions. As a trusted Services Design Consultant, they specialize in HVAC, Electrical, Fire Protection, Plumbing-Sanitary, Sewage and Water Treatment Plants, Integrated Building Management Systems and Fire Detection systems. Their expertise caters to diverse sectors, including Hospitality, Residential, Industrial, Commercial, Institutions and Health. Senelac's contribution ensures efficient and sustainable building services for Signature Global's developments.

---





# PARTNERING PROGRESS. MAHIMTURA SHAPING SIGNATURE LIVING SPACES.

Mahimtura Consultants Pvt. Ltd., a key partner in collaboration with Signature Global, brings over seven decades of multidisciplinary expertise and a dedicated team of engineers to the construction of the apartment complex. Their commitment to excellence and project management consultancy ensures the highest quality, from concept to completion.

---



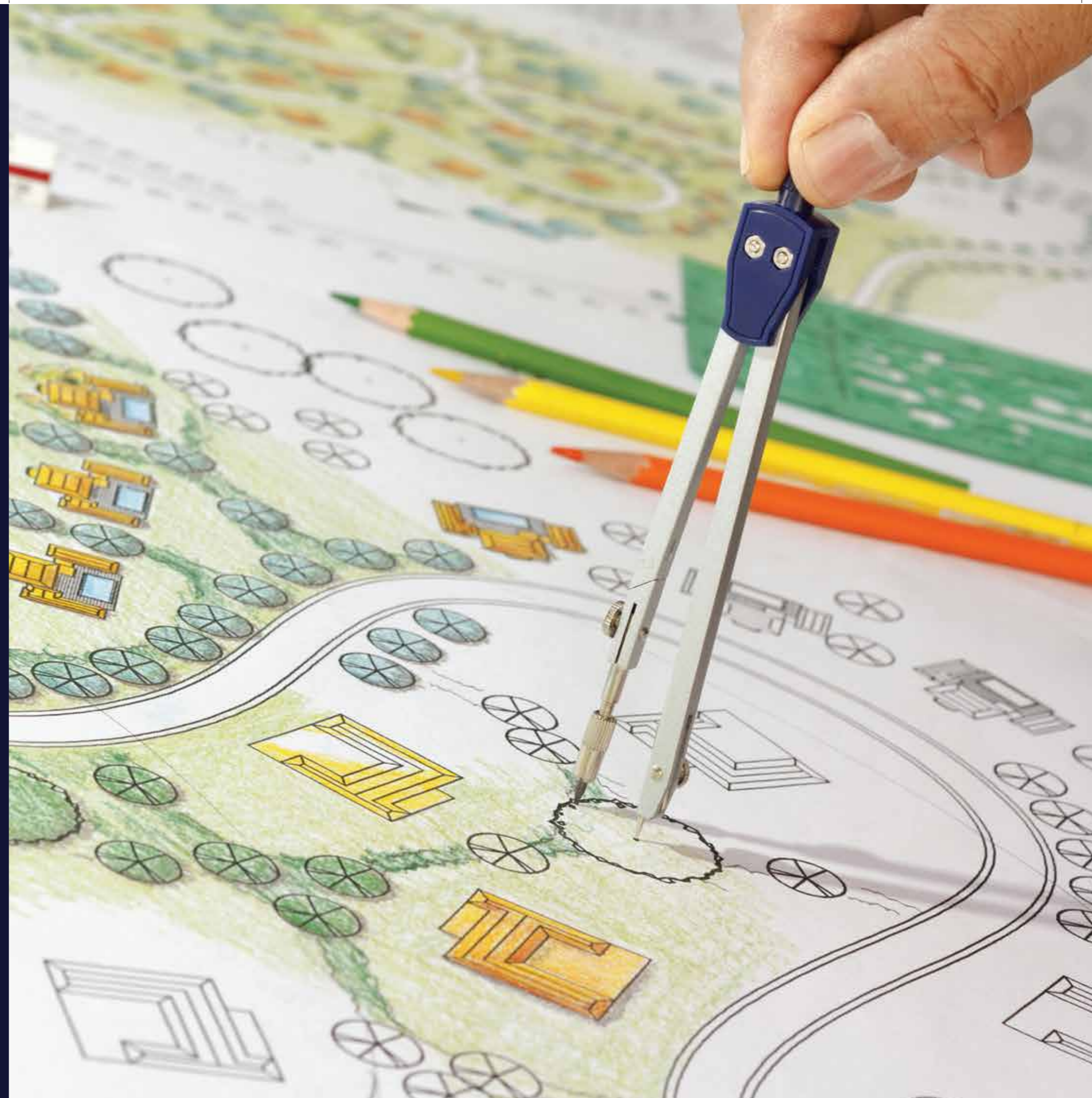


**S B O S E**  
LANDSCAPE ARCHITECTS

SIGNATURE LANDSCAPES.  
AESTHETIC DESIGNS.

Sanju Bose, an Associate of the Indian Institute of Architects, brings 25 years of expertise to landscape consultancy. With a background in architecture and landscape architecture, she's crafted remarkable projects, blending innovation and sustainability.

---



# CONNECT TO EFFORTLESS URBAN LIVING WITH DWARKA EXPRESSWAY.

Discover a lifestyle that seamlessly merges opulence with ease of access at our project, strategically positioned on Dwarka Expressway. This location isn't merely about connectivity to Delhi NCR and Gurugram; it's an enclave thriving on top-notch infrastructure. What sets this apart? It's not just a residential haven; it's a great investment opportunity. With the burgeoning demand for properties in this area driven by its excellent connectivity and infrastructural advancements, investing here increase your chances of a secure and rewarding financial future.

---





**SCHOOLS**

- A Suncity School
- B Delhi Public School
- C Euro International School
- D GD Goenka School

**HOSPITALS**

- E The Signature Advanced Super Speciality Hospital
- F Aarvy Hospital
- G Medanta - The Medicity
- H Fortis Hospital

**SPORTS**

- I Heritage Badminton Academy
- J Nehru Stadium
- K Rezag La Shooting Sports Academy
- L Tau Devi Lal Sports Complex

**HOTELS**

- M Holiday Inn
- N Hyatt Regency
- O Karma Lakelands
- P ITC Grand Bharat

**CONNECTIVITY**

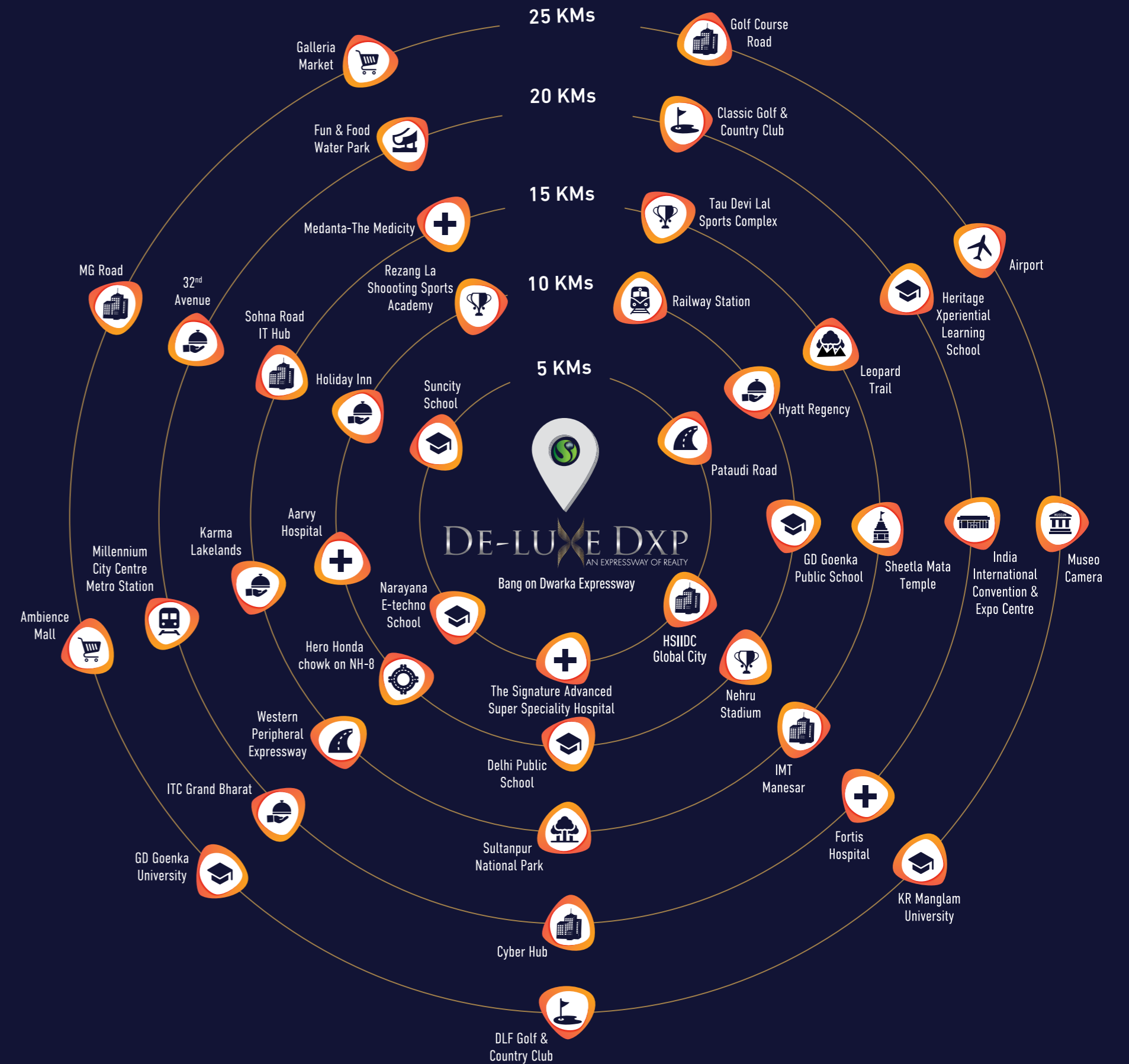
- Q Dwarka Expressway
- R Pataudi Road
- S Railway Station
- T Hero Honda chowk on NH-8
- U Western Peripheral Expressway
- V Millennium City Centre Metro
- W Cyber Hub
- X Airport

**LOCATION MAP**

Map Shown here is based upon google maps

# HARMONY AND CONNECTIVITY AT YOUR URBAN OASIS.

Immerse yourself in the vibrancy of modern living within this strategically positioned project, maximizing on its close proximity to exceptional urban facilities. Our meticulously planned layout offers not just luxurious residences but also a well-connected road network, advanced utilities as well as close proximity to educational institutions, healthcare facilities and commercial hubs. Discover a haven of tranquillity here with high-end construction, excellent amenities, green landscaping and a lifestyle that defines good living.



Distance mentioned based on Google Maps



ENTRANCE OF GRANDEUR.  
A CAPTIVATING PRELUDE TO LUXURY LIVING.

A  
MODERN DESIGN  
ETCHED IN GOLD.



The residential development DE-LUXE DXP in Gurugram, pre-certified with IGBC GOLD, presents a distinctive contemporary design, emphasizing sustainability.

---





# ENTER A WORLD OF HIGH-END ARCADE FOR A RELAXING RETAIL EXPERIENCE.

Step into luxury at our high-end retail outlet, spanning 100,000 sq. ft. Discover curated collections in an upscale ambiance, redefining the shopping experience.

Rolex watches

CHANEL

WICKY  
MCXX

GUCCI

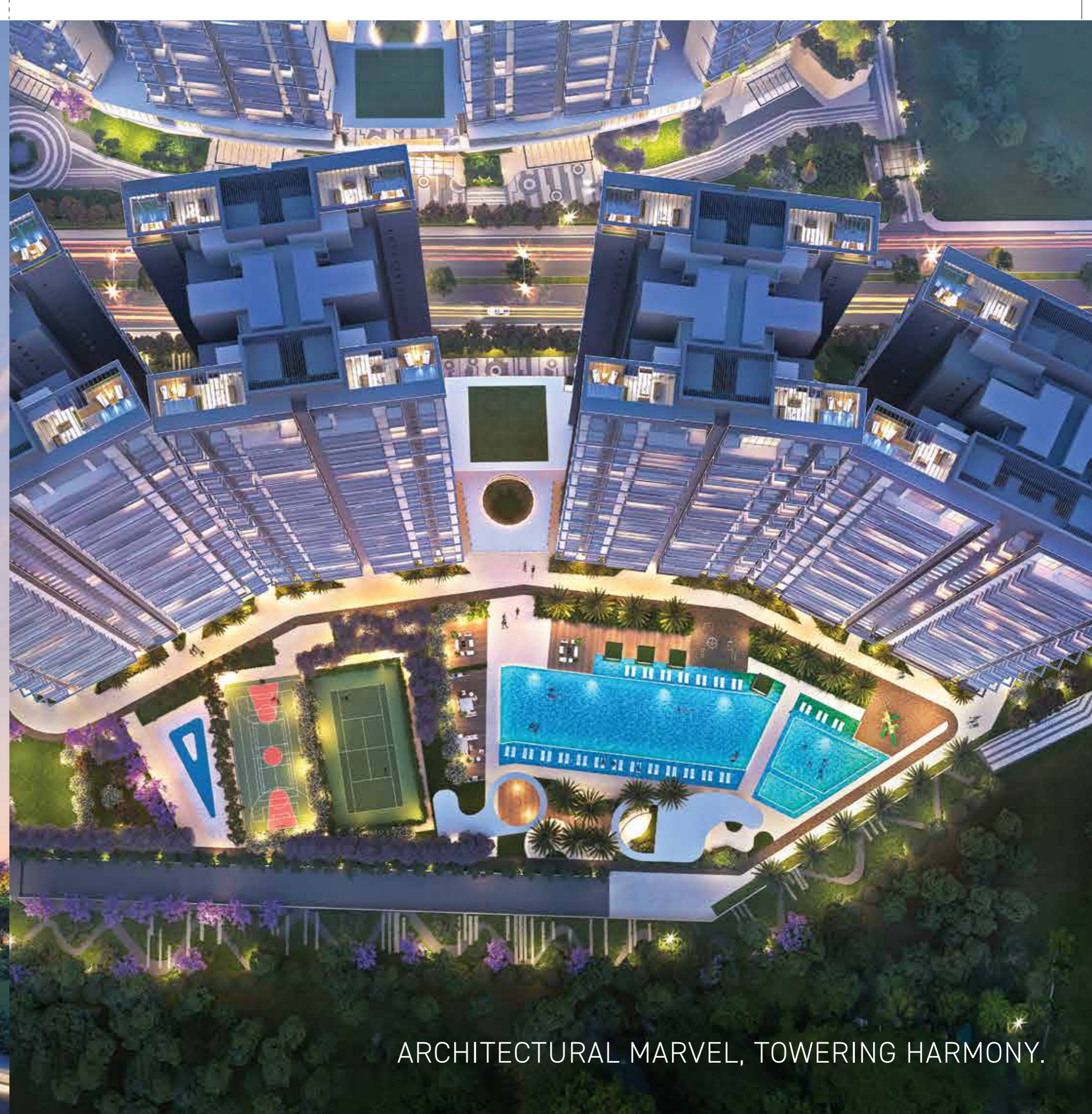


POOLSIDE PARADISE.  
LUXURY AT EVERY STROKE.

Dive into luxury and make a splash, as our exclusive residence complex comes with seven pools, including two heated ones. Experience a serene escape and refreshing indulgence in our poolside oasis, where every stroke embodies opulence.



ELEGANT CRESCENT.  
WHERE SIGNATURE LIVING REIGNS.



ARCHITECTURAL MARVEL, TOWERING HARMONY.

# OPULENT LIVING REDEFINED. UNVEILING THE LUXURIOUS AMENITIES.

As you explore the intricacies of smart living features, our residential development stands as a testament to contemporary elegance with a strong focus on sustainability. Immerse yourself in a world of opulence with meticulously designed amenities, creating a majestic ambiance for both residents and guests. Designed for both functionality and style, nature and recreation seamlessly merge within our complex. Convenience extends to every facet of your living experience. It is not just a residential development; it's an invitation to an unparalleled lifestyle where luxury, sustainability and world-class amenities harmoniously coexist.

---

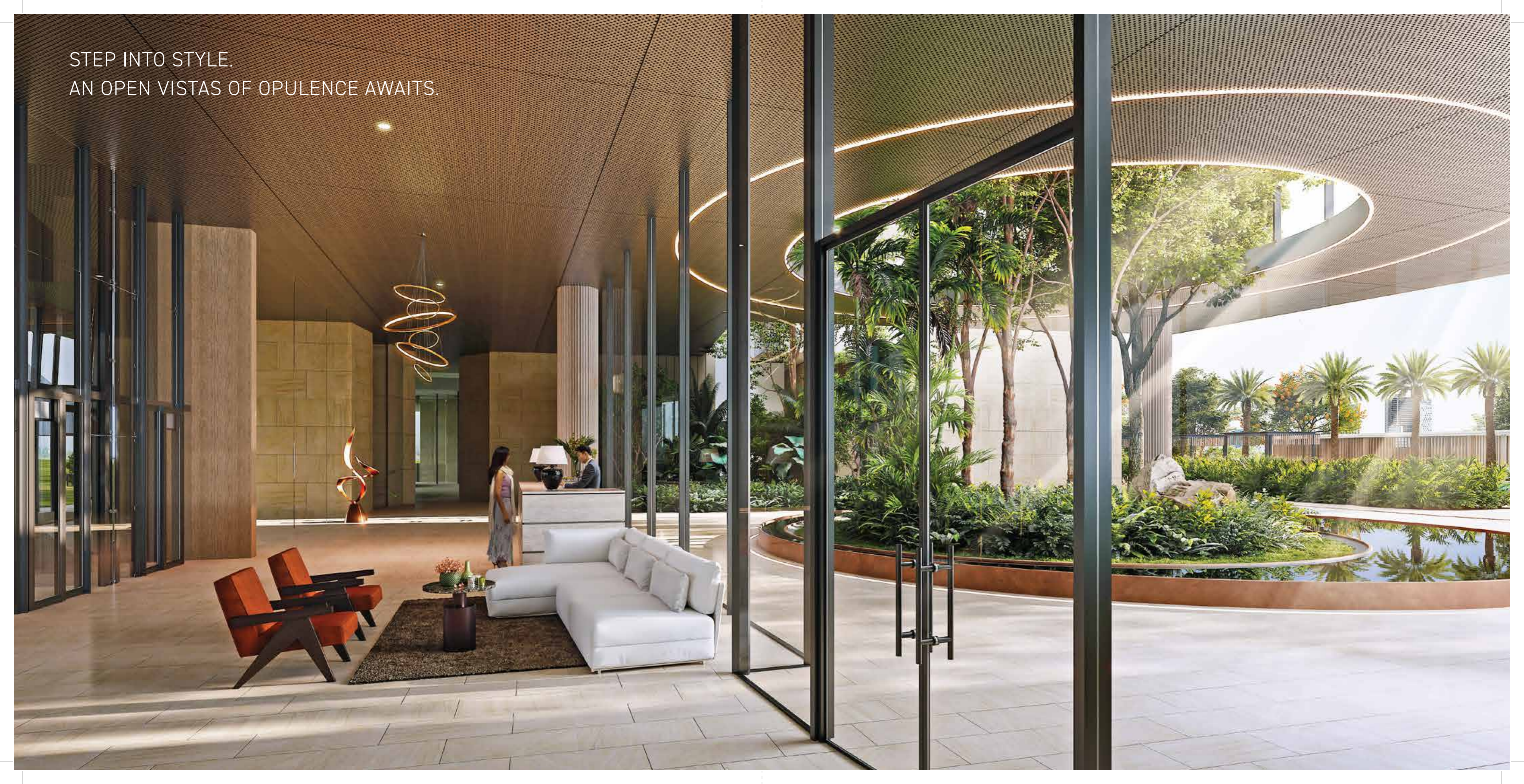




EXCLUSIVE RETREAT REDEFINED  
AT LUXURIOUS CLUB ELEVATE.

Two lavish clubhouses totalling 80,000 sq. ft.

STEP INTO STYLE.  
AN OPEN VISTAS OF OPULENCE AWAITS.





Multi-purpose Hall



Fine Dining



Co-working Space



Kids' Outdoor Play Area



Doctors Room/Clinic



Gym



Salon



Laundromat



Mini Theatre



Table Tennis



Conference Room



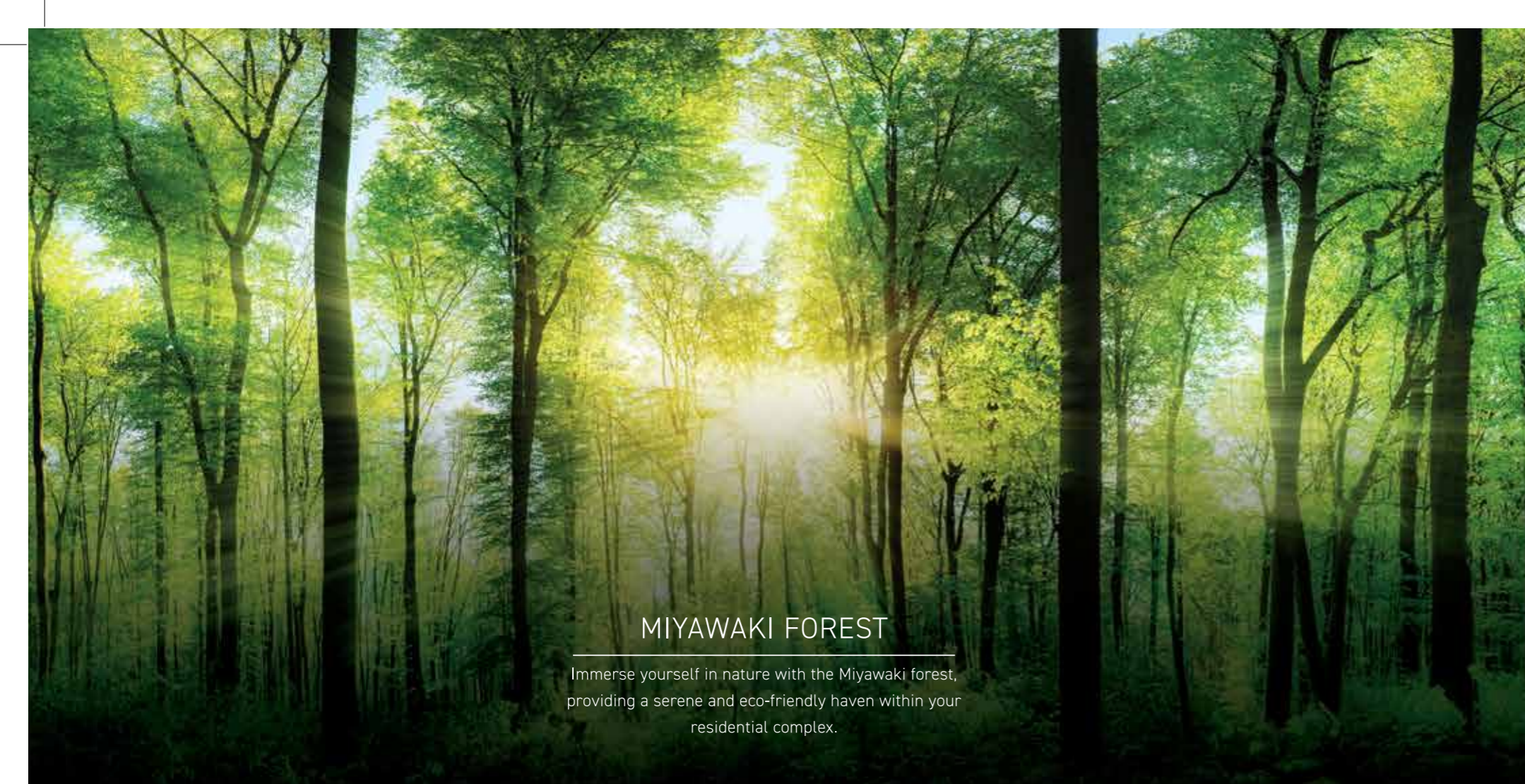
Kids' Indoor Play Area



E-library



SPA



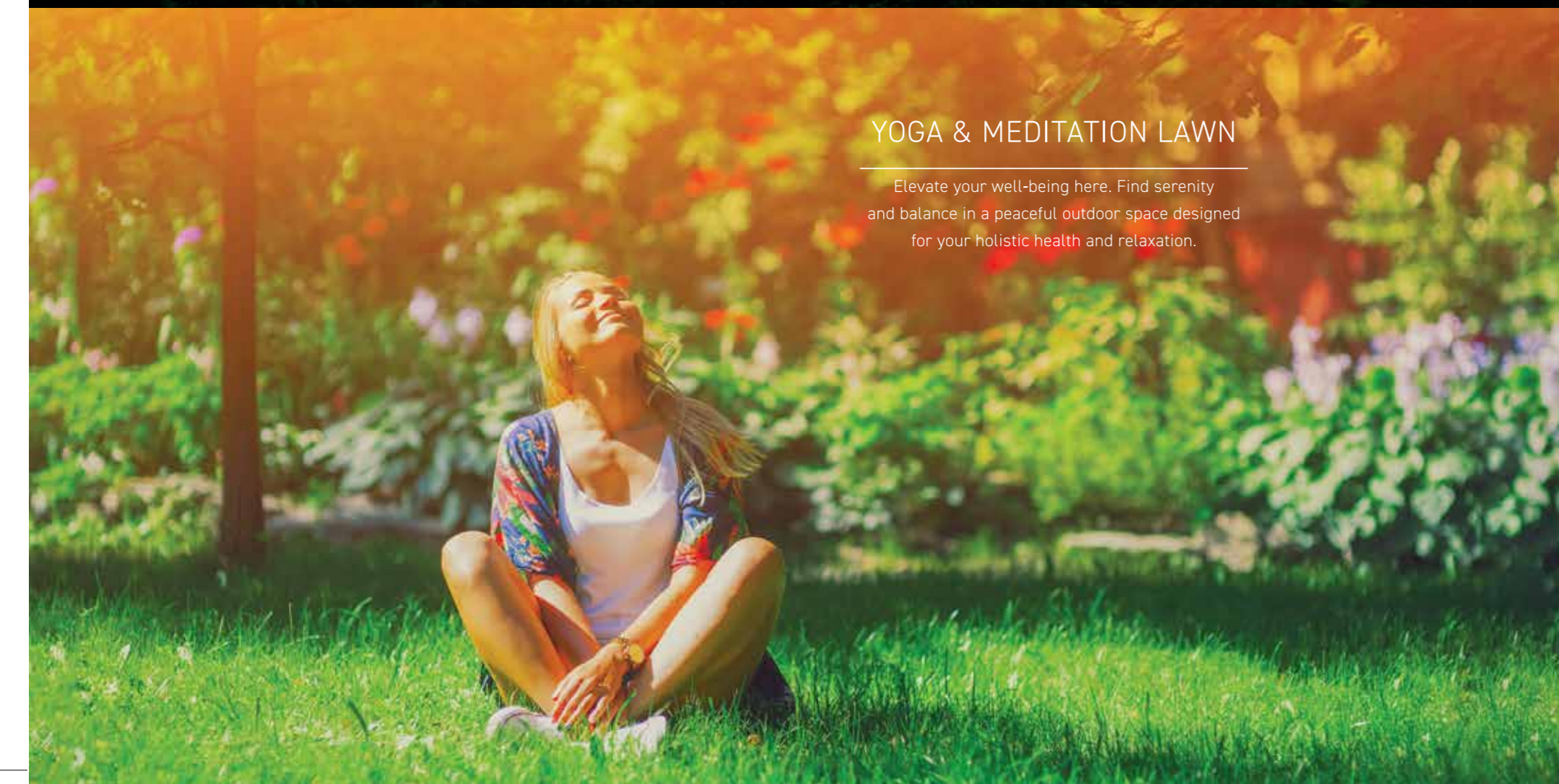
### MIYAWAKI FOREST

Immerse yourself in nature with the Miyawaki forest, providing a serene and eco-friendly haven within your residential complex.



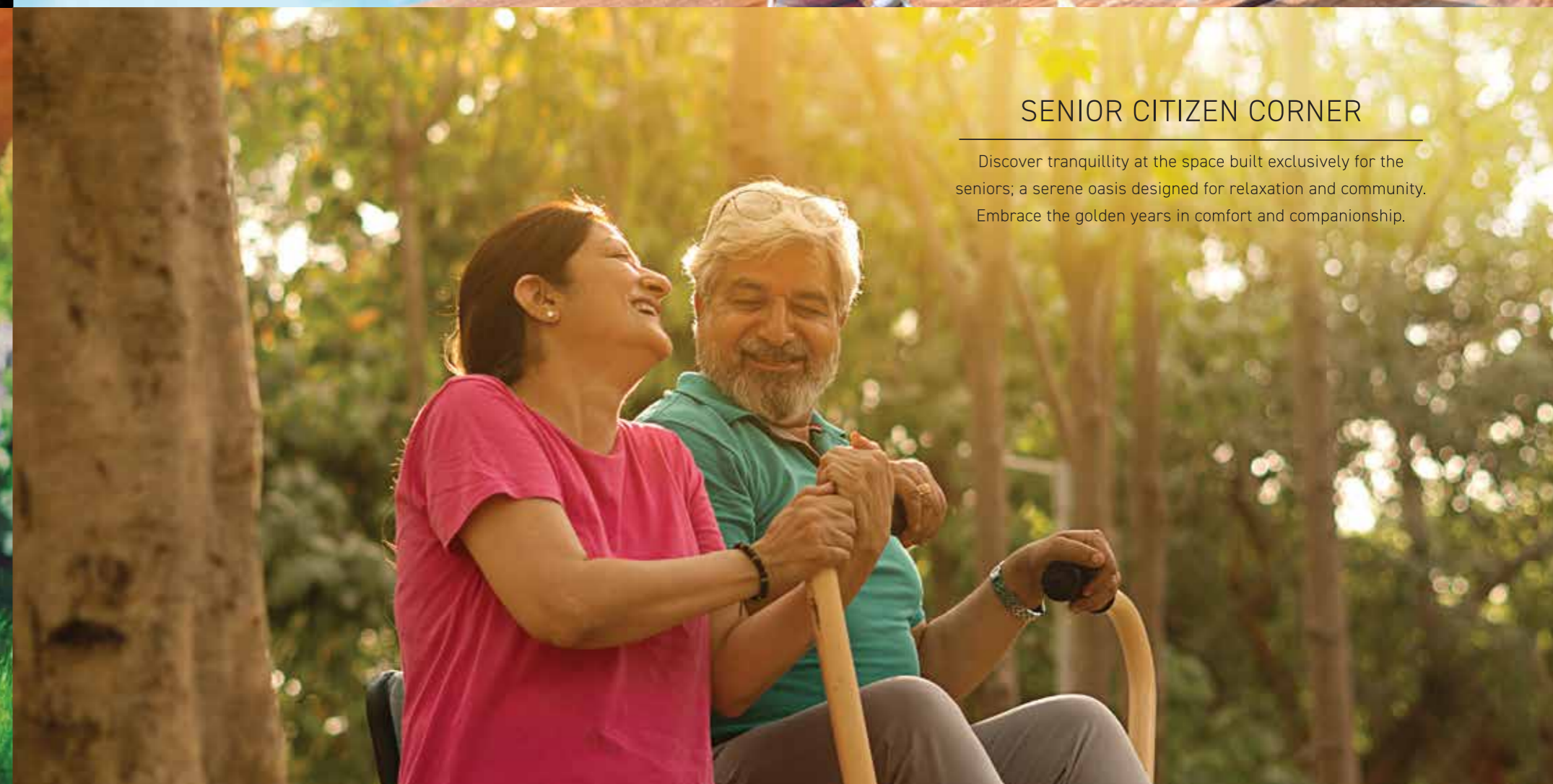
### OPEN PARTY DECK

Celebrate under the sky.  
The perfect venue for unforgettable gatherings and special moments, creating memories that last a lifetime.



### YOGA & MEDITATION LAWN

Elevate your well-being here. Find serenity and balance in a peaceful outdoor space designed for your holistic health and relaxation.



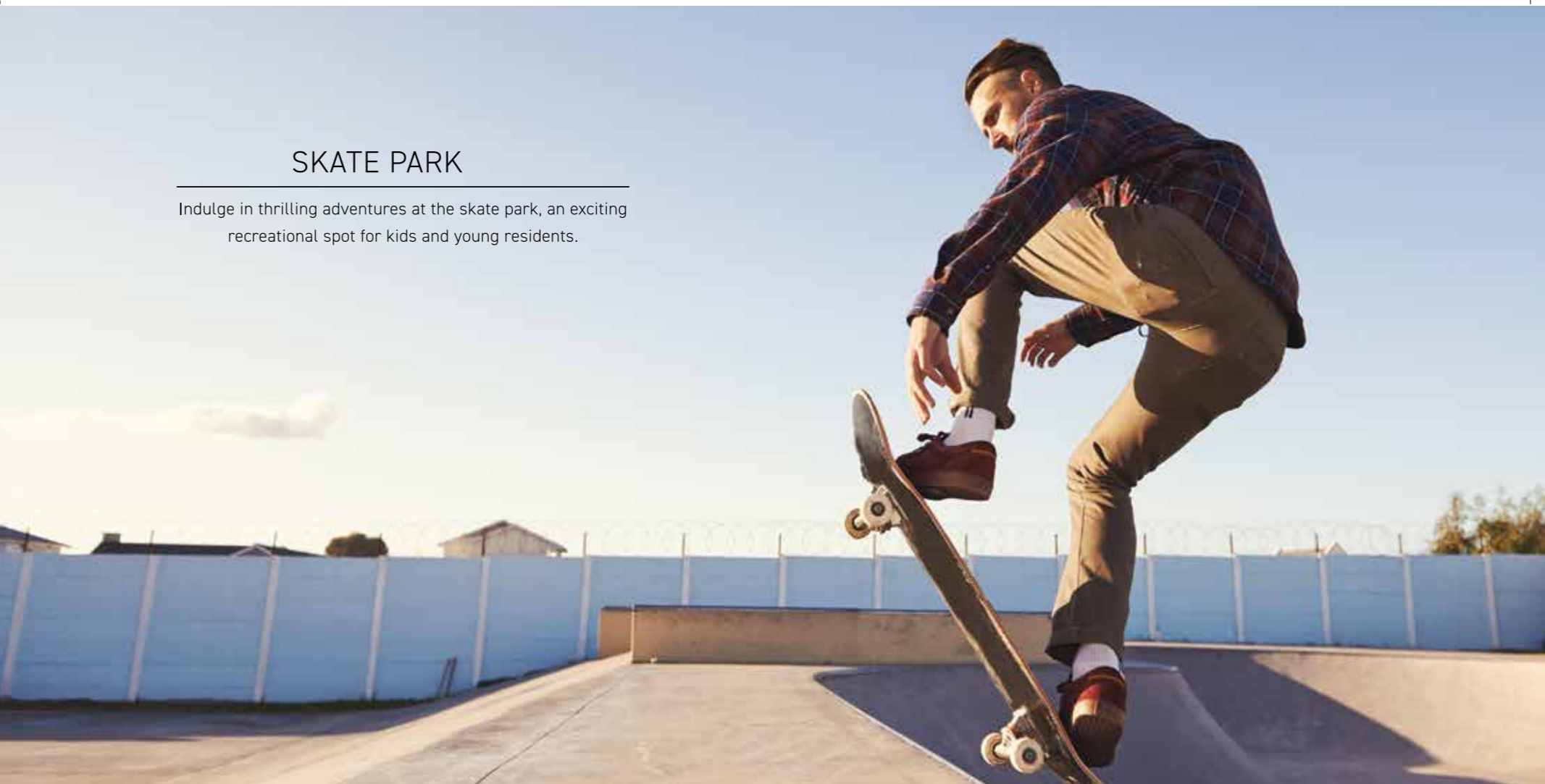
### SENIOR CITIZEN CORNER

Discover tranquillity at the space built exclusively for the seniors; a serene oasis designed for relaxation and community. Embrace the golden years in comfort and companionship.



### JOGGING TRACK

Step into an active lifestyle, put your well-being on track. Enjoy the refreshing outdoors as you stay fit, healthy and invigorated with each energizing lap.



### SKATE PARK

Indulge in thrilling adventures at the skate park, an exciting recreational spot for kids and young residents.



### OUTDOOR GYM

Revitalize in the open air, rejuvenate with a consistent health routine. Elevate your fitness surrounded by nature, fostering a healthier lifestyle with each workout session.



### BUTTERFLY AND FRAGRANCE GARDEN

Delight in the sensory experience of our fragrance garden and butterfly garden, adding a touch of nature to your daily life.



## MULTI-USE COURT

Stay active with multi-use courts for volleyball, badminton, basketball and a tennis while the pet zone and amphitheatre cater to diverse recreational preferences.

## TENNIS COURT

Unleash your tennis prowess on the meticulously designed court. Ace up your game in a setting tailored for ultimate tennis enthusiasts. Your court, your skills, your victory – welcome to the world of tennis excellence.

## PET ZONE

Pamper your furry friends in our dedicated Pet Zone, where tails wag and companionship thrives amidst a haven of joy and comfort.

## AMPHITHEATRE

The amphitheatre cater to diverse recreational preferences

## 5-TIER SECURITY SYSTEM

The Advanced 5-tier security system strives to create a safer haven for you.



## ELECTRIC CAR CHARGING POINTS

Power up your commutes and charge into the future. Embrace sustainability with convenient options, making eco-friendly living seamlessly integrated into your lifestyle.



## HIGH SPEED LIFTS

Elevate your living experience and enjoy swift, seamless journeys within our modern and efficient residential spaces.



## CART FACILITY

Experience convenience with cart facilities in the parking area, simplifying the transport of goods and belongings for residents.



### SMART CONTROLLED ACCESS SYSTEM FOR HOUSEHELP

Ensure security with controlled servant entry, seamlessly managed through cutting-edge smart access technology for a worry-free living experience.



### SMART DOOR LOCK

Embrace futuristic living with home automation, VDP fingerprint and card reader smart locks at the main entrance, combining security and convenience.



### CHEF ON CALL FOR PRIVATE DINING

Experience culinary delight with a chef on call for private dining, adding a touch of exclusivity and luxury to your gastronomic experiences.



HIGHRISE  
SOPHISTICATED,  
SIGNATURE LIVING.

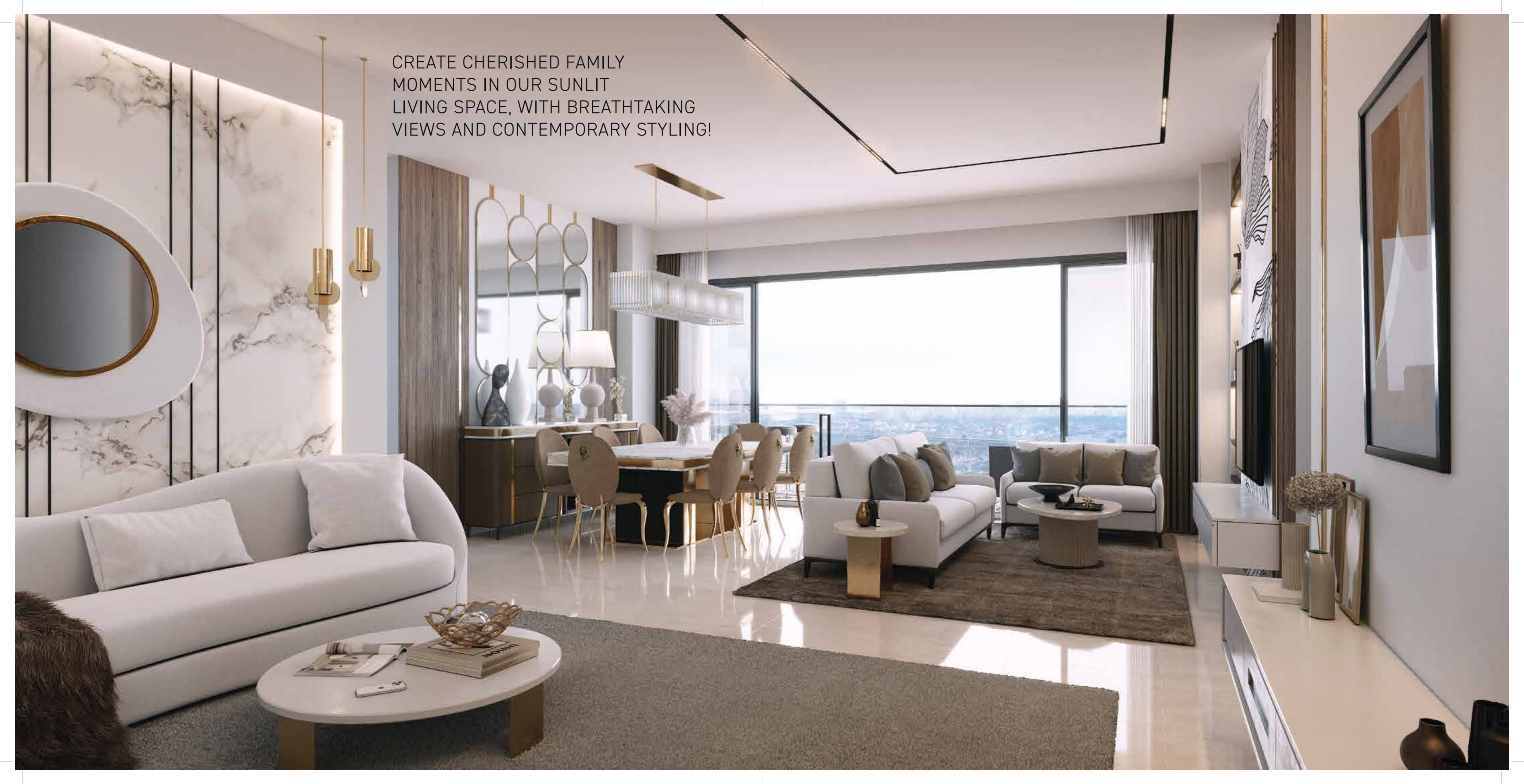
SERVE AND SPIKE.  
ACE SPORTS AT YOUR DOORSTEP.

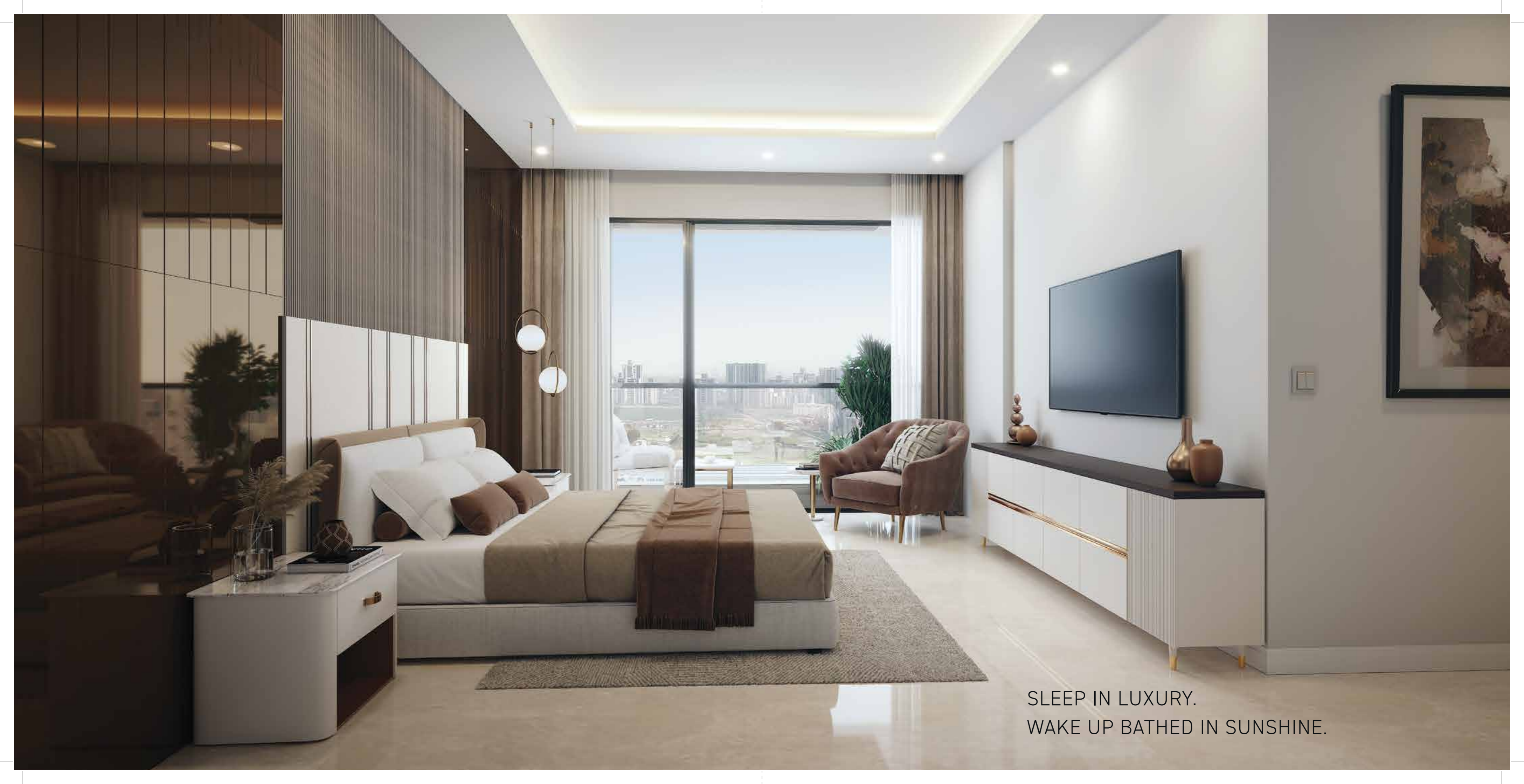


DIVE INTO LUXURY.  
SWIM IN STYLE.



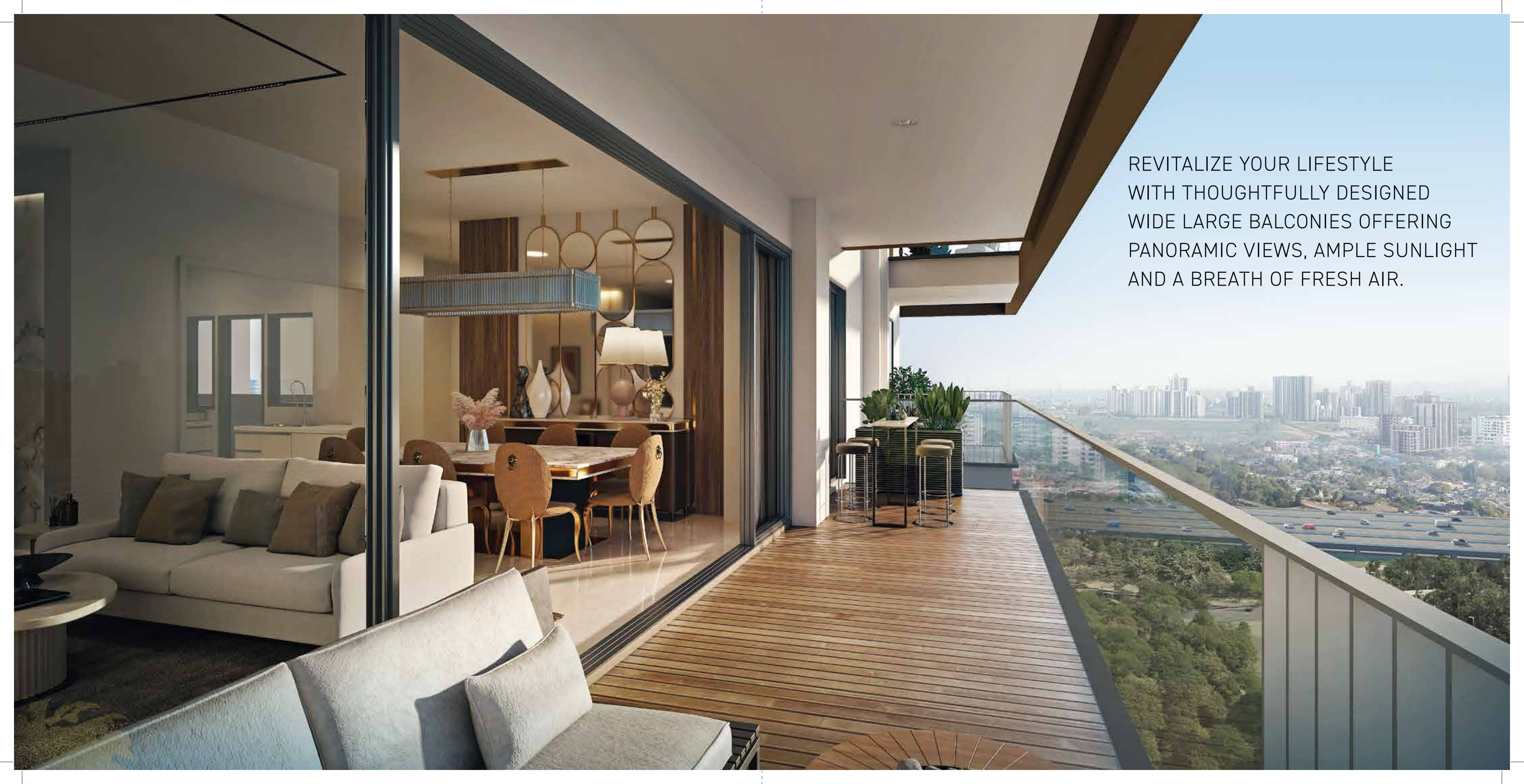
CREATE CHERISHED FAMILY  
MOMENTS IN OUR SUNLIT  
LIVING SPACE, WITH BREATHTAKING  
VIEWS AND CONTEMPORARY STYLING!





SLEEP IN LUXURY.  
WAKE UP BATHED IN SUNSHINE.



A wide-angle photograph of a modern apartment's living and dining areas, which are seamlessly connected to a large, open balcony. The interior features a light-colored sofa with dark cushions, a dining table with gold chairs, and a kitchen area with a blue pendant light. The balcony has a wooden deck, a small bar with stools, and a view of a city skyline and a highway. The text is overlaid on the right side of the image.

REVITALIZE YOUR LIFESTYLE  
WITH THOUGHTFULLY DESIGNED  
WIDE LARGE BALCONIES OFFERING  
PANORAMIC VIEWS, AMPLE SUNLIGHT  
AND A BREATH OF FRESH AIR.



SITE PLAN  
GROUND FLOOR LVL PLAN

## LEGENDS

1. FIRE TENDER PATH
2. JOGGING TRACK
3. GUARD HOUSE
4. TOWER DROP OFF
5. WATER BODY
6. KIDS PLAY AREA
7. PERGOLA
8. SCULPTURE GARDEN
9. PAVILION SEAT
10. SENIOR CITIZEN AREA
11. MIYAWAKI FOREST
12. HAMMOCK GARDEN
13. HIBISCUS GARDEN
14. PARKING
15. PET ZONE
16. SEATING AREA
17. LANDSCAPE GREEN
18. COMMERCIAL PLAZA
19. CLUB DROP OFF
20. F & B
21. TRIPLE HEIGHT LOBBY
22. COMMERCIAL (G+2)
23. LIFT LOBBY
24. COMMERCIAL DROP OFF



### LEGEND :

- T-1 (P+25)
- T-2 (P+28)
- T-3 (P+31)
- T-4 (P+34)
- T-5 (P+40)
- T-6 (P+38)
- T-7 (P+35)
- T-8 (P+33)

### LEGEND :

- 3 BHK
- 3.5 BHK
- 4.5 BHK

### PODIUM TOP 1ST FLOOR LVL PLAN

\* TYPICAL FLOOR / UNITS OF RESIDENTIAL TOWERS START FROM 2ND FLOOR LEVEL

## LEGENDS

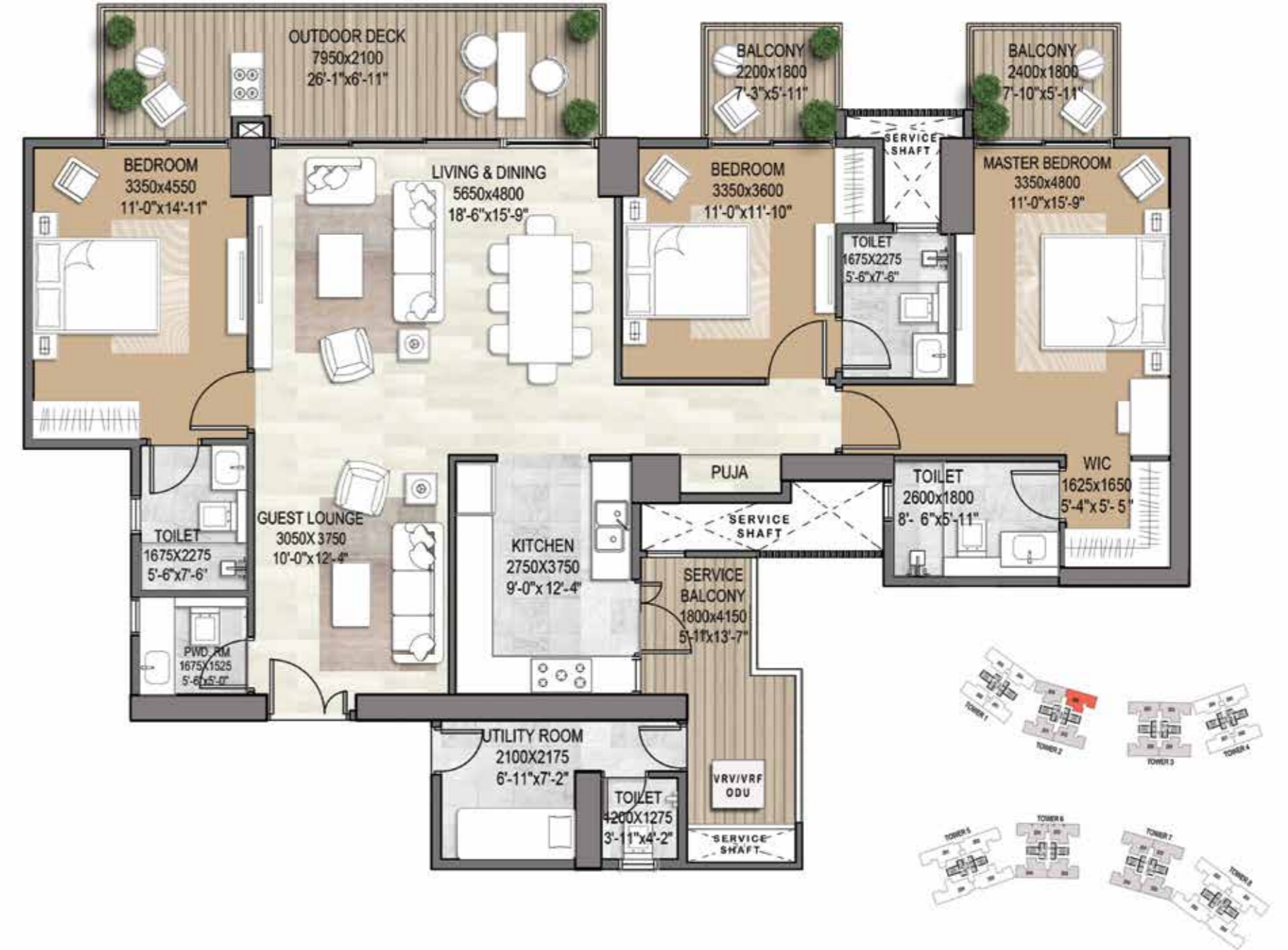
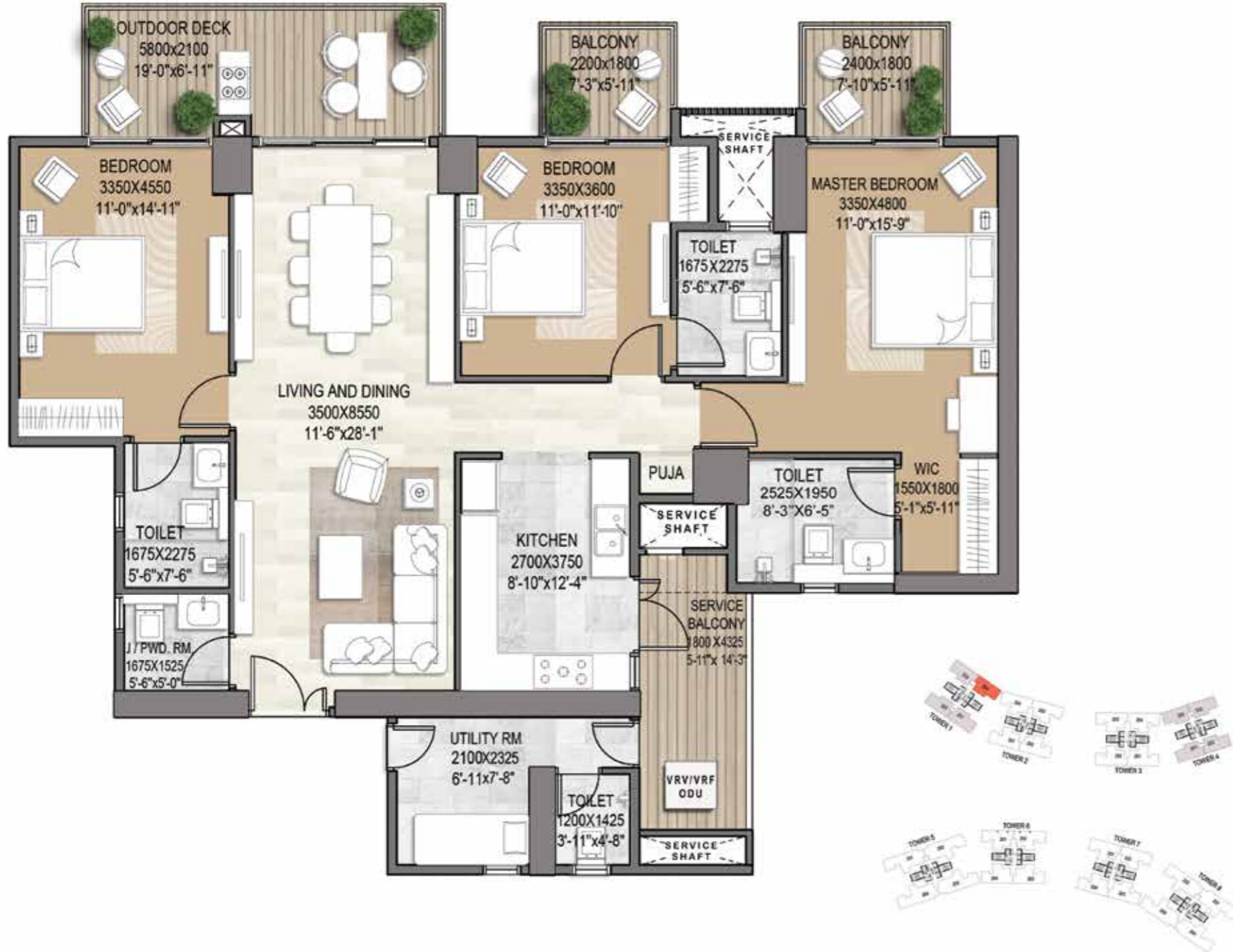
1. FIRE TENDER PATH
2. JOGGING TRACK
3. POOL DECK
4. SWIMMING POOL A-G (C&G HEATED POOL)
5. OUTDOOR GYM AREA
6. WATER PAVILION SEATING PLAZA
7. YOGA & MEDITATION AREA
8. OPEN PARTY DECK
9. SCULPTURE GARDEN
10. KIDS PLAY AREA
11. SENIOR CITIZEN AREA
12. MIYAWAKI FOREST
13. HAMMOCK GARDEN
14. HIBISCUS GARDEN
15. SKATING RINK
16. PET ZONE
17. AMPHITHEATRE
18. FRAGRANCE GARDEN
19. BADMINTON COURT
20. MULTI USE COURT
21. SEATING AREA
22. COMMERCIAL (G+2)
23. CRICKET PITCH

### 3 BHK UNIT PLAN

3 BHK, 3 Toilets, Powder Room, Puja, Utility Room

### 3.5 BHK UNIT PLAN

3 BHK, 3 Toilets, Powder Room, Guest Lounge, Puja, Utility Room



### 4.5 BHK UNIT PLAN

4 BHK, 4 Toilets, Powder Room, Guest Lounge, Puja, Utility Room



TOWERING CRESCENDO.  
SYMPHONY IN HEIGHTS.



**SPECIFICATIONS**

S.NO.	LOCATION	MATERIALS SPECIFICATION	BRANDS OPTION
1.	<b>LOUNGE/ FOYER/ LIVING/ DINING</b>		
	FLOORING & SKIRTING	IMPORTED MARBLE	AS/ SELECTION
	WALLS	ACRYLIC EMULSION PAINT	ASIAN PAINTS/BERGER/ BRITISH PAINTS/ NEROLAC OR EQUIVALENT
	CEILING	ACRYLIC EMULSION PAINT	
	BOXING FOR INDOOR A.C UNIT	CALCIUM SILICATE BOARD WITH MS FRAMEWORK	AS/ SELECTION
2.	<b>PUJA</b>		
	FLOORING & SKIRTING	IMPORTED MARBLE	AS/ SELECTION
	WALLS	ACRYLIC EMULSION PAINT	ASIAN PAINTS/BERGER/ BRITISH PAINTS/ NEROLAC OR EQUIVALENT
	CEILING	ACRYLIC EMULSION PAINT	
3.	<b>POWDER ROOM</b>		
	FLOORING & SKIRTING	VITRIFIED MATTE TILES	AS/ SELECTION
	WALLS	VITRIFIED GLOSSY TILES	TILES - KAJARIA/ ORIENT BELL/ SIMPOLO/ SOMANY OR EQUIVALENT
	CEILING	ACRYLIC EMULSION PAINT ON CEILING/MOISTURE-PROOF BOARD FALSE CEILING	ASIAN PAINTS/BERGER/ BRITISH PAINTS/ NEROLAC OR EQUIVALENT
	COUNTER	IMPORTED MARBLE /ENGINEERED STONE	AS/ SELECTION
	FIXTURES	BRANDED	GROHE/ KOHLER/ JAQUAR/ TOTO OR EQUIVALENT
	CARPENTRY	MIRROR, VANITY CABINET	AS/ VENDOR SELECTION
	ACCESSORIES	TOILET PAPER HOLDER, TOWEL RING	JAQUAR/ AQUAVIVA/ CERA/ PARRYWARE(ROCA)/ KOHLER OR EQUIVALENT
4.	<b>MASTER BEDROOM</b>		
	FLOORING & SKIRTING	IMPORTED MARBLE	AS/ SELECTION
	WALLS	ACRYLIC EMULSION PAINT	ASIAN PAINTS/BERGER/ BRITISH PAINTS/ NEROLAC OR EQUIVALENT
	CEILING	ACRYLIC EMULSION PAINT	
	BOXING FOR INDOOR A.C INDOOR UNIT	CALCIUM SILICATE BOARD WITH MS FRAMEWORK	AS/ SELECTION
	WALK-IN-CLOSET	MODULAR - PRELAMINATED SHUTTER AND CARCASS	AS/ VENDOR SELECTION - HAFELE ACCESSORIES OR EQUIVALENT
	INDOOR A.C UNIT	VRV/VRF A.C UNIT	DAIKIN/ SAMSUNG/ LG OR EQUIVALENT
5.	<b>MASTER TOILET</b>		
	FLOORING & SKIRTING	STONE/ VITRIFIED MATTE TILES	AS/ SELECTION
	WALLS	STONE/ VITRIFIED MATTE TILES	TILES - KAJARIA/ ORIENT BELL/ SIMPOLO/ SOMANY OR EQUIVALENT
	CEILING	ACRYLIC EMULSION PAINT ON CEILING/MOISTURE-PROOF BOARD FALSE CEILING	ASIAN PAINTS/BERGER/ BRITISH PAINTS/ NEROLAC OR EQUIVALENT
	COUNTER	IMPORTED MARBLE /ENGINEERED STONE	AS/ SELECTION
	FIXTURES	BRANDED	GROHE/ KOHLER/ JAQUAR/ TOTO OR EQUIVALENT
	CARPENTRY	MEDICINE CABINET WITH MIRROR, VANITY CABINET	AS/ VENDOR SELECTION
	ACCESSORIES	TOILET PAPER HOLDER, TOWEL RING, TOWEL RACK, ROBE HOOK	JAQUAR/ AQUAVIVA/ CERA/ PARRYWARE(ROCA)/ KOHLER OR EQUIVALENT
6.	<b>OTHER BEDROOM</b>		
	FLOORING & SKIRTING	LAMINATED WOODEN FLOORING (AC4)	ACTION TESA/ GREENLAM/ PERGO/ CENTURY PLY OR EQUIVALENT
	WALLS	ACRYLIC EMULSION PAINT	ASIAN PAINTS/BERGER/ BRITISH PAINTS/ NEROLAC OR EQUIVALENT
	CEILING	ACRYLIC EMULSION PAINT	
	BOXING	CALCIUM SILICATE BOARD WITH MS FRAMEWORK	AS/ SELECTION
	INDOOR A.C UNIT	VRV/VRF A.C UNIT	DAIKIN/ SAMSUNG/ LG OR EQUIVALENT
7.	<b>OTHER TOILETS</b>		
	FLOORING & SKIRTING	VITRIFIED MATTE TILES	AS/ SELECTION
	WALLS	VITRIFIED GLOSSY TILES UPTO FALSE CEILING	TILES - KAJARIA/ ORIENT BELL/ SIMPOLO/ SOMANY OR EQUIVALENT
	CEILING	ACRYLIC EMULSION PAINT ON CEILING/MOISTURE-PROOF BOARD FALSE CEILING	ASIAN PAINTS/BERGER/ BRITISH PAINTS/ NEROLAC OR EQUIVALENT
	COUNTER	IMPORTED MARBLE/ GRANITE/ ENGINEERED STONE	AS/ SELECTION
	FIXTURES	BRANDED	GROHE/ KOHLER/ JAQUAR/ TOTO OR EQUIVALENT
	CARPENTRY	MEDICINE CABINET WITH MIRROR, VANITY CABINET	AS/ VENDOR SELECTION
	ACCESSORIES	TOILET PAPER HOLDER, TOWEL RING, TOWEL ROD, ROBE HOOK	JAQUAR/ AQUAVIVA/ CERA/ PARRYWARE(ROCA)/ KOHLER OR EQUIVALENT
	SHOWER GLASS PARTITIONS	GLASS PARTITION WITHOUT DOOR	MR.GLASS/ OZONE/ JAQUAR OR EQUIVALENT

Note : Flooring in mix design of marble, granite and tile. Accordingly, variations in shade and/ or size and/or colour and/or design of the tiles, motifs, mica etc. may occur.

S.NO.	LOCATION	MATERIALS SPECIFICATION	BRANDS OPTION
8.	<b>KITCHEN</b>		
	FLOORING & SKIRTING	STONE/ VITRIFIED MATTE TILES	AS/ SELECTION
	WALLS	VITRIFIED GLOSSY TILES & ACRYLIC EMULSION PAINT	KAJARIA/ ORIENT BELL/ SIMPOLO/ SOMANY OR EQUIVALENT
	COUNTER	GRANITE	AS/ SELECTION
	CEILING	ACRYLIC EMULSION PAINT	ASIAN PAINTS/BERGER/ BRITISH PAINTS/ NEROLAC OR EQUIVALENT
	FITTING & ACCESSORIES	MODULAR CABINETARY WITH SOFT CLOSE TRAYS, HOB & CHIMNEY, REFRIGERATOR, BUILT-IN MICROWAVE, BUILT-IN OVEN, DISHWASHER, DOUBLE BOWL SINK WITH DRAIN BOARD, INSTANT GEYSER, RO	HOB & CHIMNEY, REFRIGERATOR, BUILT-IN-MICROWAVE, BUILT-IN-OVEN, DISHWASHER: BOSCH/ SIEMENS/ LG/ SAMSUNG/ ELICA*WHIRLPOOL OR EQUIVALENT INSTANT GEYSER : A.O SMITH/ VENUS/ RACOLD OR EQUIVALENT RO : KENT/ EUREKA FORBES OR EQUIVALENT DOUBLE BOWL SINK : FRANKE/ JAYNA OR EQUIVALENT FAUCET : GROHLE/KOHLER/AMERICAN STANDARDS OR EQUIVALENT
9.	<b>TYPICAL FLOOR LIFT &amp; STAIRCASE LOBBY</b>		
	FLOORING & SKIRTING	ANTI - SKID VITRIFIED TILES	KAJARIA/ ORIENT BELL/ SIMPOLO/ SOMANY OR EQUIVALENT
	WALLS	ENAMEL + SEMI- ACRYLIC PAINT	ASIAN PAINTS/BERGER/ BRITISH PAINTS/ NEROLAC OR EQUIVALENT
	CEILING	ACRYLIC EMULSION PAINT	
10.	<b>SERVANT ROOM / UTILITY</b>		
	FLOORING & SKIRTING	ANTI - SKID VITRIFIED TILES	KAJARIA/ ORIENT BELL/ SIMPOLO/ SOMANY OR EQUIVALENT
	WALLS	ACRYLIC EMULSION PAINT	ASIAN PAINTS/BERGER/ BRITISH PAINTS/ NEROLAC OR EQUIVALENT
	CEILING	ACRYLIC EMULSION PAINT	
11.	<b>SERVANT ROOM TOILETS</b>		
	FLOORING & SKIRTING	ANTI - SKID VITRIFIED TILES	KAJARIA/ ORIENT BELL/ SIMPOLO/ SOMANY OR EQUIVALENT
	WALLS	VITRIFIED TILES TILL 7'-0, ACRYLIC EMULSION PAINT ABOVE	ASIAN PAINTS/BERGER/ BRITISH PAINTS/ NEROLAC OR EQUIVALENT
	CEILING	OIL BOUND DISTEMPER	
	FITTING & FIXTURE	WASH BASIN WITH FAUCET, SHOWER DIVERTER	CERA/ ROCA / HINDWARE OR EQUIVALENT
12.	<b>BALCONIES</b>		
	FLOORING	VITRIFIED MATTE TILES	KAJARIA/ ORIENT BELL/ SIMPOLO/ SOMANY OR EQUIVALENT
	WALLS	EXTERIOR GRADE ACRYLIC EMULSION PAINT WITH GYPSUM PLASTER	ASIAN PAINTS/BERGER/ BRITISH PAINTS/ NEROLAC OR EQUIVALENT
	CEILING		
	RAILING - LIVING/DINING & BEDROOMS	SS + LAMINATEDGLASS	AS/SELECTION
UTILITY PARAPET	RCC / BLOCKWORK WITH RCC LINTEL	NA	
13.	<b>EXTERNAL DOOR WINDOW</b>	DGU -ENERGY EFFICIENT GLASS/TINTED/REFLECTIVE/CLEAR GLASS WITH ANODIZED ALUMINIUM FRAMES.	As/Vendor Selection
14.	<b>APARTMENT DOORS</b>		NA
	MAIN DOOR : 50-60MM THICK VENEER/LAMINATED FLUSH DOOR SHUTTER, ARCHITRAVE & FRAME - PU PAINT, STEAM BEECH SOLID WOOD. OTHER DOORS : 38MM THICK LAMINATED SHUTTER, FLUSH DOOR SHUTTERS, ARCHITRAVE & FRAME - HIGH GLOSS PU PAINT, STEAM BEECH SOLID WOOD.		
15.	<b>ELECRICAL SWITCHES</b>		PANASONIC/ SCHNEIDER/ LEGRAND/ ANCHOR/ L & T OR EQUIVALENT NORTH WEST/ ANCHOR/ HAVELLS/ WIPRO OR EQUIVALENT
	APARTMENT SWITCHES	SMART SWITCHES	
16.	<b>AIR-CONDITIONING</b>	VRV/VRF	DAIKIN/ HITACHI/ BLUE STAR/ O GENERAL/ LG OR EQUIVALENT
17.	<b>TERRACE</b>	ANTI - SKID VITRIFIED TILES WITH PRIVATE GARDEN	
18.	<b>LIFT</b>	PASSENGER LIFT	OTIS/ KONE/ THYSSEN KRUPP/ SCHINDLER OR EQUIVALENT
		SERVICE LIFT	
		PENTHOUSE INDEPENDENT LIFT	
19.	<b>SECURITY</b>	5 TIER - GATE/PERIMETER/PARKING/ LOBBY AND ENTRANCE DOOR, VDP AND DIGITAL SMART LOCK ON MAIN DOOR, SECURED ACCESS FOR LIFTS AND LIFT LOBBIES, ACCESS CONTROLLED RECEPTION AREA IN ALL TOWERS, CCTV SURVEILLANCE INCLUDING LIFTS, FIRE DETECTION & SPRINKLER SYSTEM AND GAS LEAKAGE DETECTORS IN APARTMENTS.	ONE TOUCH/ ALBA URMET OR EQUIVALENT
20.	<b>AUTOMATION</b>	PROVISION FOR LIGHTING/AIR CONDITIONING PROVISION FOR CURTAINS & VDP THROUGH CUSTOMIZED APP.	

All products, names, logos, brands, trademarks are properties of their respective owners. Product of other companies may also be used. However, priority will be given to the aforesaid brands/companies.



## ABOUT SIGNATURE GLOBAL

Signature Global, India's leading real estate development company is currently spearheading a transformative wave in the affordable and mid-housing segments. Founded in 2014 in Gurugram, Signature Global emerged under the guidance of seasoned professionals boasting multiple decades of experience in the financial services sector, setting the stage for a journey marked by innovation and excellence. The Company is dedicated towards quality execution, underscored by a meticulous focus on value creation, reliability, and adherence to global standards.

In a testament to its financial robustness, Signature Global boasts the backing of marquee equity investors such as HDFC and IFC, a testament to the trust placed in the company's vision. This backing has not only fortified the company's financial positioning but has also propelled the adoption of high corporate governance standards within the organization.

Distinguishing itself in the competitive real estate landscape, Signature Global currently commands a notable market share, holding 19% in Delhi NCR and an impressive 30% in the micro markets of Gurugram within the affordable and mid-housing segment. Such significant market penetration is accompanied by a stellar track record, with over 8.1 million square feet already delivered and ongoing projects spanning a vast 16.9 million square feet. Looking ahead, Signature Global's ambitious forthcoming pipeline promises an additional 28.4 million square feet of saleable area. This expansive portfolio is a testament to the company's commitment to creating vibrant and sustainable living spaces.

This multifaceted approach not only showcases the company's versatility but also its ability to cater to the evolving needs of the real estate market.

A hallmark of Signature Global's success lies in its disciplined approach to land acquisition, boasting a lead time from land acquisition to project launch of approximately 18 months. This meticulous planning ensures that each project is perfectly positioned in key locations across Delhi NCR and micro markets, including South of Gurugram (Sohna), Golf course extension road, Dwarka Expressway, Vaishali (Ghaziabad), and Karnal. Moreover, the company reached a significant milestone in September 2023 when it was listed on the Bombay Stock Exchange and the National Stock Exchange of India, solidifying its position in the financial markets.

However, Signature Global's impact extends beyond financial success. The company is a torchbearer of sustainable development, receiving several prestigious certifications, including IGBC Gold certifications and EDGE green building certifications. These accolades affirm its commitment to water efficiency, energy efficiency and environmental benefits, showcasing a holistic approach to real estate development.

In the pursuit of innovation, Signature Global champions the use of advanced construction technologies, such as the rapid Aluminium Formwork technique. This technology not only ensures speed and efficiency in construction but also attests to the company's commitment to staying at the forefront of industry advancements.

This commitment is not just magniloquence but is substantiated by the company's exemplary track record of timely construction and delivery, using modern technology, and providing excellent amenities in all its projects. The Haryana government's accolade for delivering projects ahead of schedule serves as a testament to Signature Global's unwavering dedication to excellence. As the company continues to shape the real estate landscape, it stands as a beacon of innovation, sustainability and customer-centric development in the Indian real estate sector.