



The South Bay

HUGHES ROAD

By MESAON GROUP & TRIUMPH REALTY

The Grande Apartments

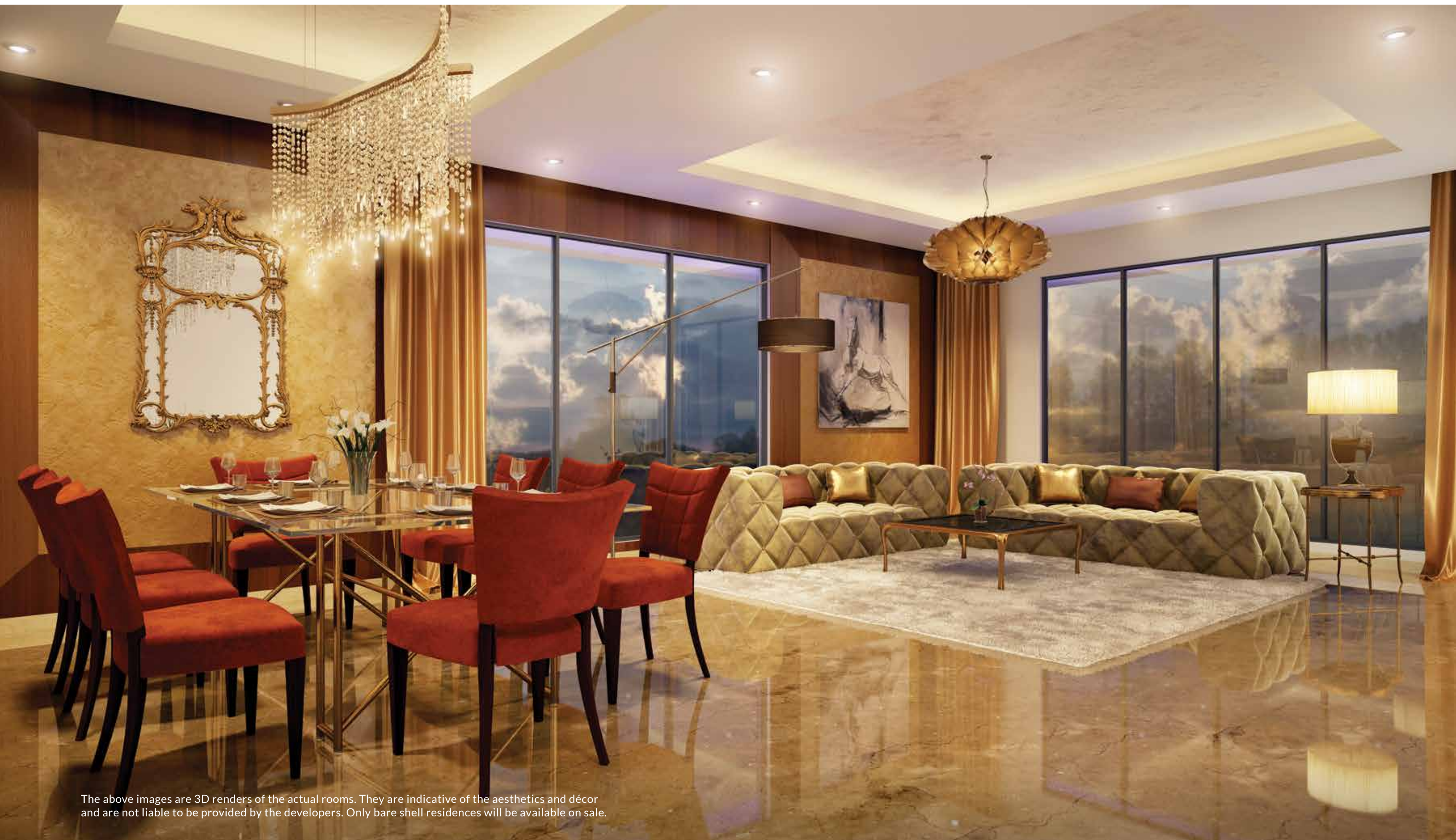
3BHK. 7TH & 8TH FLOOR. 1548 SQ FT. CARPET AREA.

22 STORIES. 16 RESIDENTIAL LEVELS. 11 APARTMENTS. 1 EXCLUSIVE ADDRESS.

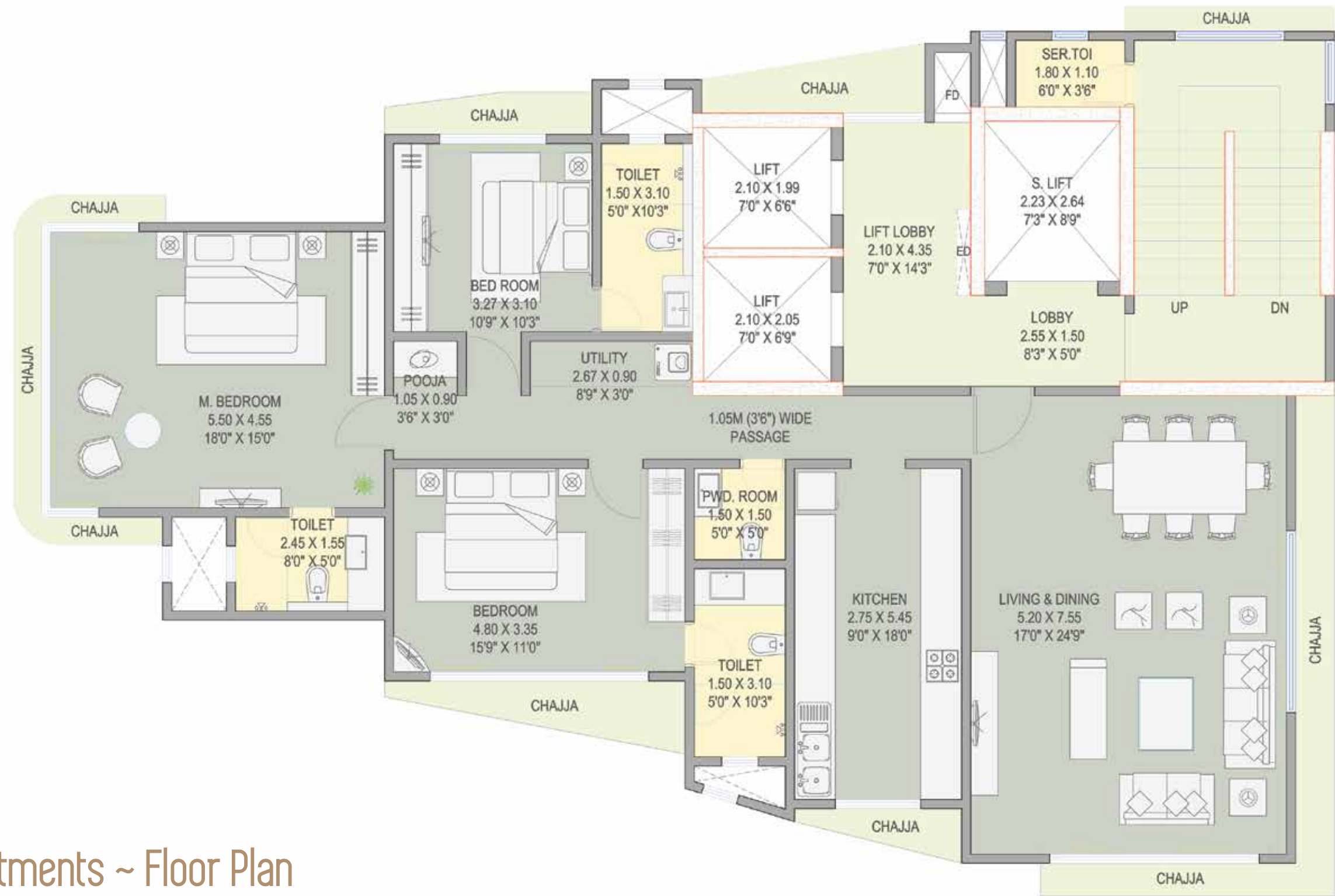
The Grande Apartments

These luxuriously designed 3 bedroom apartments occupying the entire floor offer a sense of pride and privacy. They are thoughtfully designed to offer a good sized living room with a dining area, a large kitchen, a puja room, a powder bath and utility area besides the large bedrooms. These apartments occupy the 7th and the 8th levels and they measure 1548 sq ft. in carpet area. Residents of these apartments have the entire lift lobby space available to themselves.

The Living Room 430 Sq Ft.



The above images are 3D renders of the actual rooms. They are indicative of the aesthetics and décor and are not liable to be provided by the developers. Only bare shell residences will be available on sale.



The Grande Apartments ~ Floor Plan

The furniture shown in the layout is only indicative. Only bare shell residences will be available on sale.



The Grande Apartments ~ Isometric View

The furniture shown in the layout is only indicative. Only bare shell residences will be available on sale.

The pictures of the views are taken from a building across the road. These are indicative of the general view, and may vary from the views from each floor of The South Bay.





MAHARERA Registration No. P51900002722
Also available at website : maharera.mahaonline.gov.in



BUILDING TRUST
MESACON
GROUP

TRIUMPH
REALTY

The South Bay, 31, Hughes Road, Mumbai 400 007
www.thesouthbay.in | +91 70 4512 1282

Disclaimer: The images, perspectives, elevations & specifications contained in this brochure are only indicative. The room dimensions in meters are as per approved plans, the dimensions in feet have been rounded off to the closest inch. The Proposed development and building are subject to approval from the respective Authorities. The Developers reserve the right to make changes or alteration to the design of the flats, building, perspectives, elevations, and specifications at their sole discretion without any prior notice.



The South Bay

HUGHES ROAD

By MESAON Group & Triumph Realty

The Premiere Suites

4BHK DUPLEX. 9TH TO 20TH FLOOR. 2207 SQ FT. CARPET AREA

22 STORIES. 16 RESIDENTIAL LEVELS. 11 APARTMENTS. 1 EXCLUSIVE ADDRESS.

The Premiere Suites

These luxurious 4 bedroom duplex apartments are spread across 2207 sq ft. carpet area. Each of them offer a beautiful view of the Queen's Necklace, the lush green Hanging Gardens, the Babulnath Mandir and the old world Parsi colony. These suites offer a large living area coupled with a dining space besides a large kitchen, a puja room, powder bath, utility space and luxurious bedrooms at the lower level. Each of these Suites come with a personal home elevator connecting the lower level to the upper. The specially designed master bedroom at the upper level offers complete privacy and a picturesque view of the Arabian Sea. The master bedrooms are incredibly grand and cover a carpet area of approx. 645 sq ft. True to its name the expanse of the room offers space for a super king sized bed attached with a very beautiful walk in wardrobe. The jacuzzi by the window epitomizes luxury to its fullest. These duplexes are alternatively spread out over levels 9 to 20. Residents of these suites also have the entire lift lobby space available to themselves.

The Living Room 515 Sq Ft.



The above images are 3D renders of the actual rooms. They are indicative of the aesthetics and décor and are not liable to be provided by the developers. Only bare shell residences will be available on sale.

The Master Bedroom 645 Sq Ft.

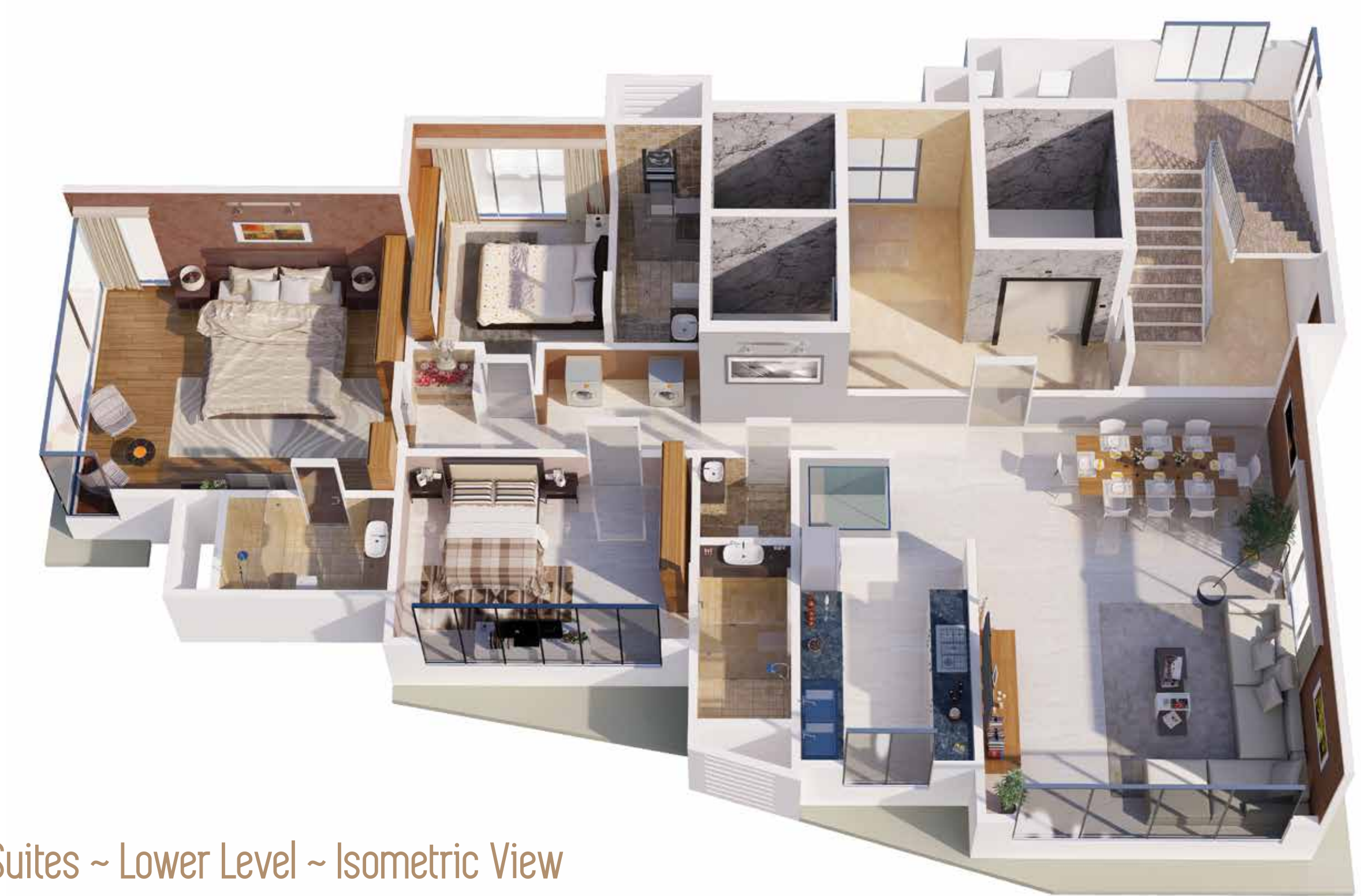


The above images are 3D renders of the actual rooms. They are indicative of the aesthetics and décor
and are not to be considered as actual. Only bare shell residences will be available on sale.



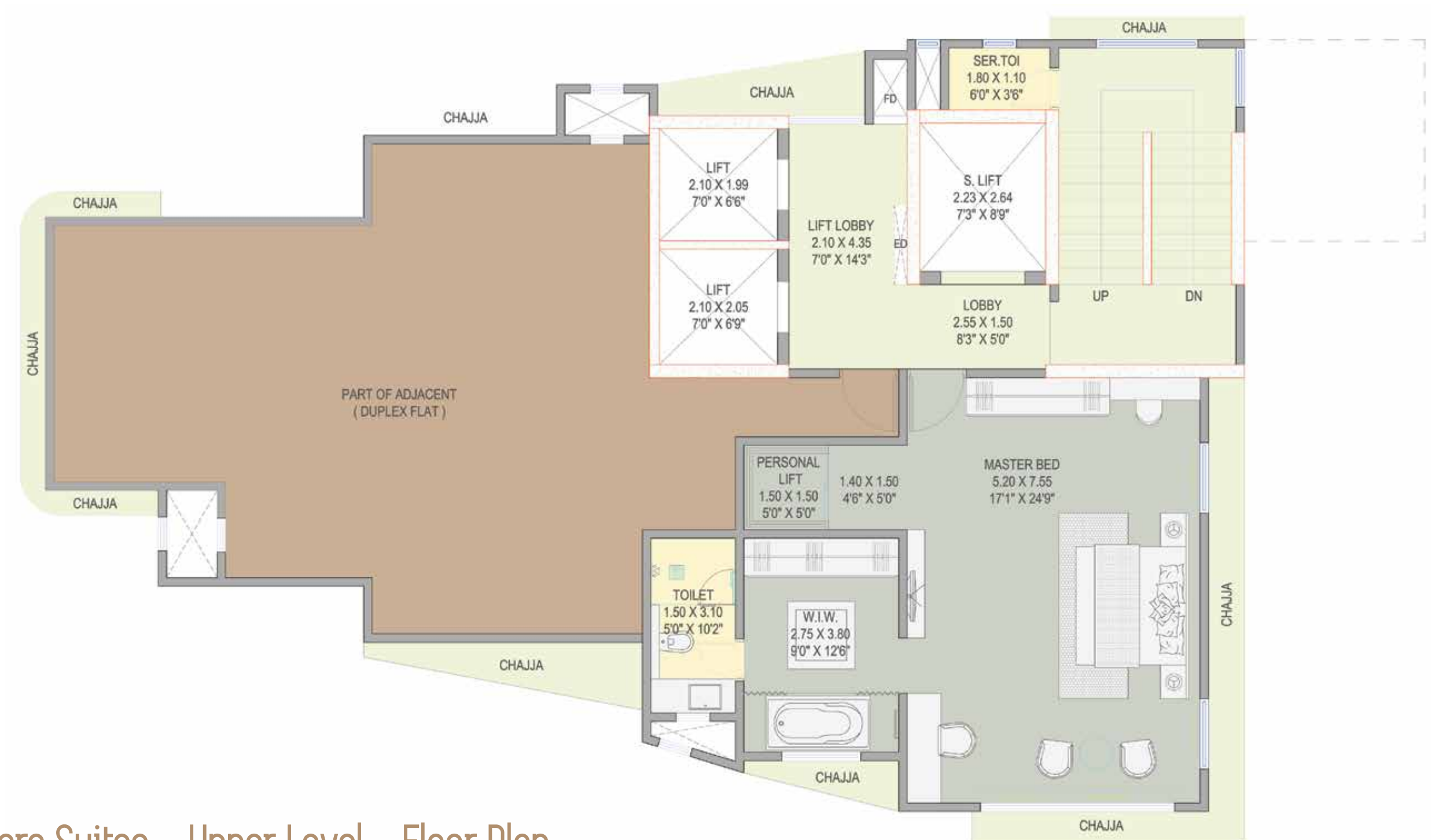
The Premiere Suites ~ Lower Level ~ Floor Plan

The furniture shown in the layout is only indicative. Only bare shell residences will be available on sale.



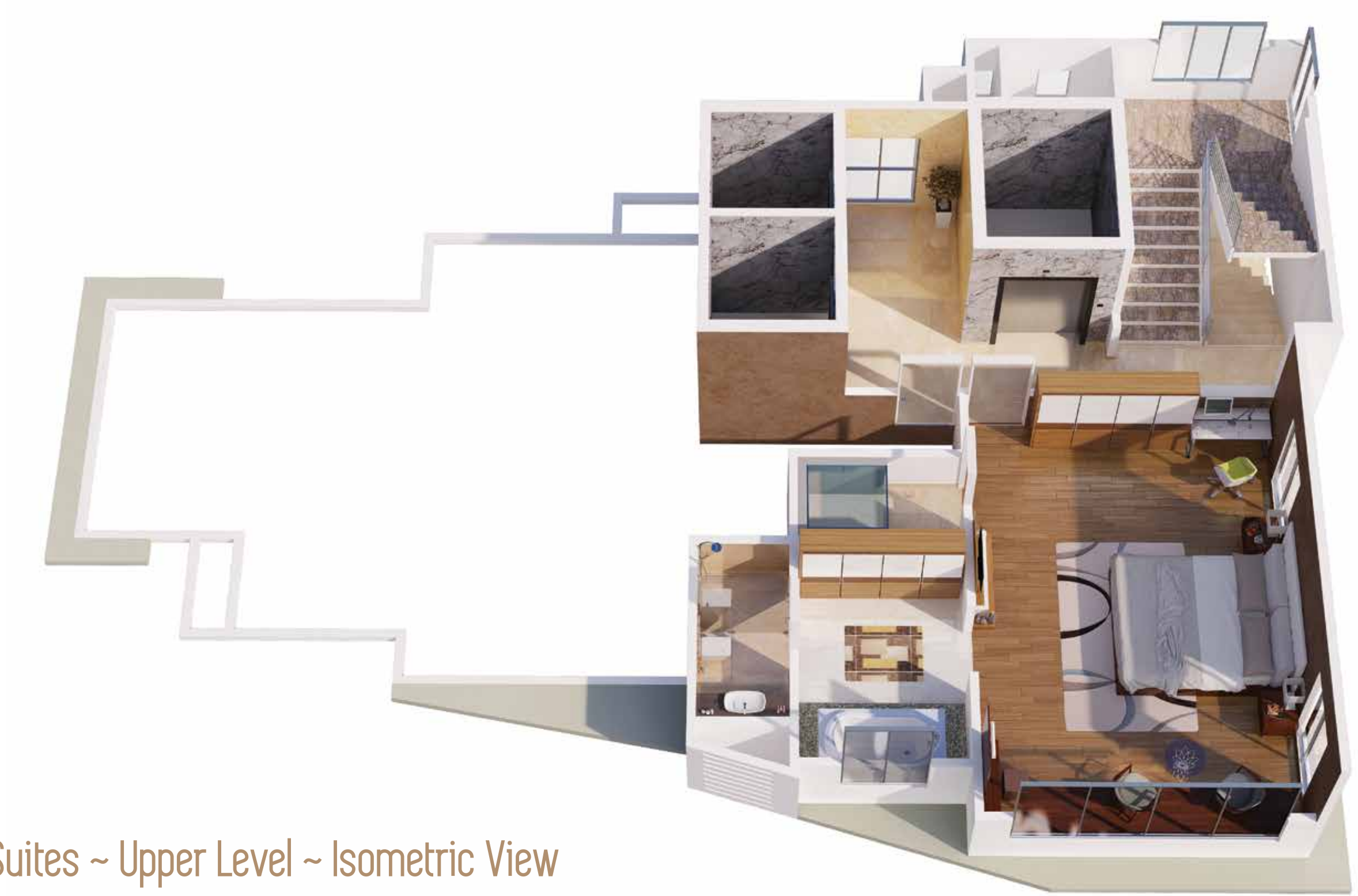
The Premiere Suites ~ Lower Level ~ Isometric View

The furniture shown in the layout is only indicative. Only bare shell residences will be available on sale.



The Premiere Suites ~ Upper Level ~ Floor Plan

The furniture shown in the layout is only indicative. Only bare shell residences will be available on sale.



The Premiere Suites ~ Upper Level ~ Isometric View

The furniture shown in the layout is only indicative. Only bare shell residences will be available on sale.

The pictures of the views are taken from a building across the road. These are indicative of the general view, and may vary from the views from each floor of The South Bay.





MAHARERA Registration No. P51900002722
Also available at website : maharera.mahaonline.gov.in



MESACON
GROUP

TRIUMPH
REALTY

The South Bay, 31, Hughes Road, Mumbai 400 007
www.thesouthbay.in | +91 70 4512 1282

Disclaimer: The images, perspectives, elevations & specifications contained in this brochure are only indicative. The room dimensions in meters are as per approved plans, the dimensions in feet have been rounded off to the closest inch. The Proposed development and building are subject to approval from the respective Authorities. The Developers reserve the right to make changes or alteration to the design of the flats, building, perspectives, elevations, and specifications at their sole discretion without any prior notice.



The South Bay

HUGHES ROAD

By MESAON GROUP & TRIUMPH REALTY

The Royale Suites

4BHK DUPLEX. 9TH TO 20TH FLOOR. 2429 SQ FT. CARPET AREA

22 STORIES. 16 RESIDENTIAL LEVELS. 11 APARTMENTS. 1 EXCLUSIVE ADDRESS

The Royale Suites

These lavish 4 bedroom duplex apartments are spread across 2429 sq ft. carpet area. These suites offer a very grand and enviable sea facing living room of over 650 sq ft. that overlook the Queen's Necklace, lush green Hanging Gardens, the Babulnath Mandir and the old world Parsi colony. The large kitchen with its connected store and utility space is sure to bring out the chef in you, while the well placed powder bath and luxurious bedrooms highlight the finer nuances of the design. Each of these suites come with a personal home elevator connecting the lower level to the upper. The lower level houses a very beautifully designed spacious master bedroom spread over 520 sq ft. carpet area with a big walk in wardrobe and bath. Residents of these suites also have the entire lift lobby space available to themselves. These duplexes are alternatively spread out over levels 9 to 20. These suites can easily be converted to 5BHK to accommodate larger families.

The Living Room 650 Sq Ft.



The above images are 3D renders of the actual rooms. They are indicative of the aesthetics and décor and are not liable to be provided by the developers. Only bare shell residences will be available on sale.

The Master Bedroom 520 Sq Ft.

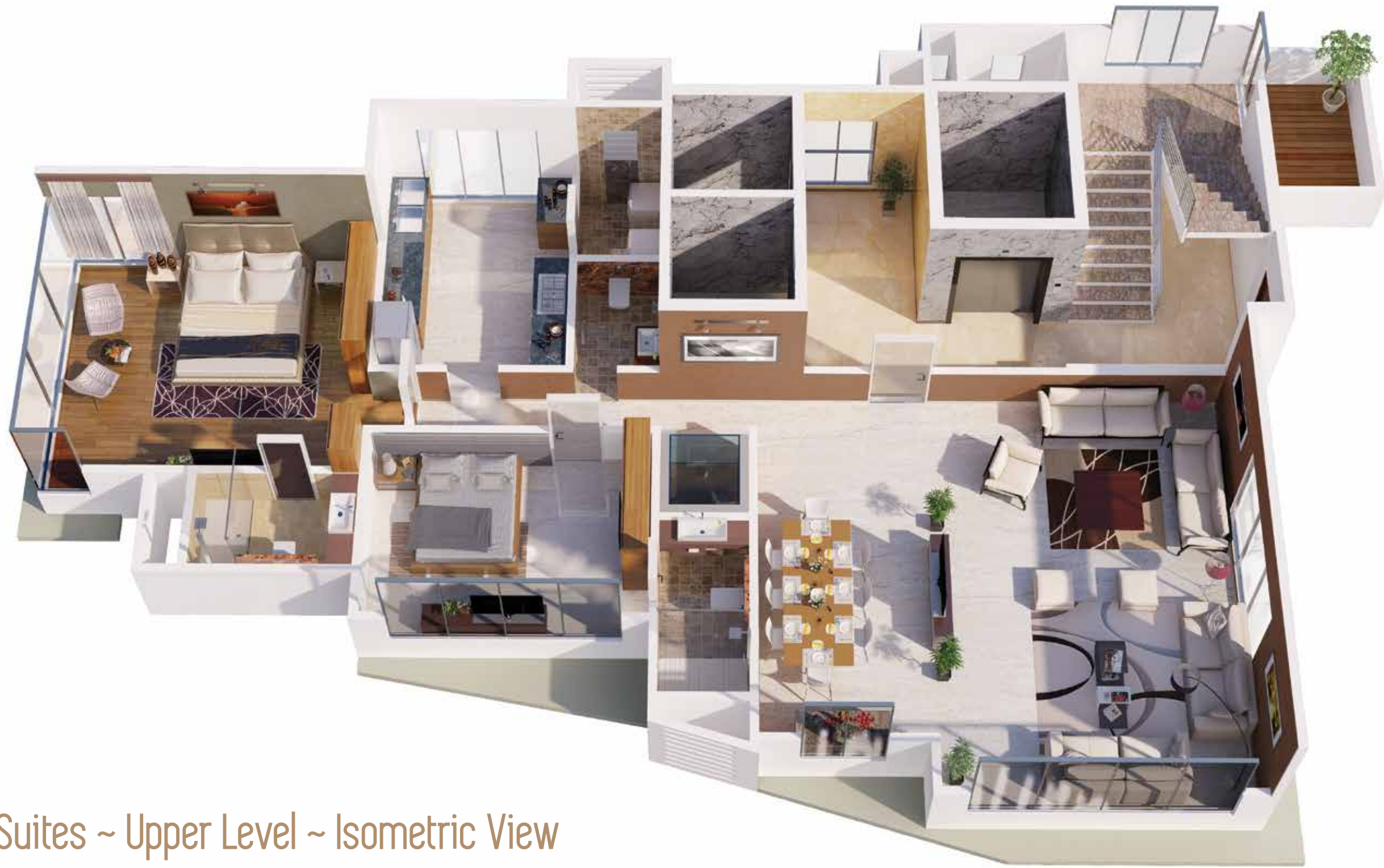


The above images are 3D renders of the actual rooms. They are indicative of the aesthetics and décor and are not liable to be provided by the developers. Only bare shell residences will be available on sale.



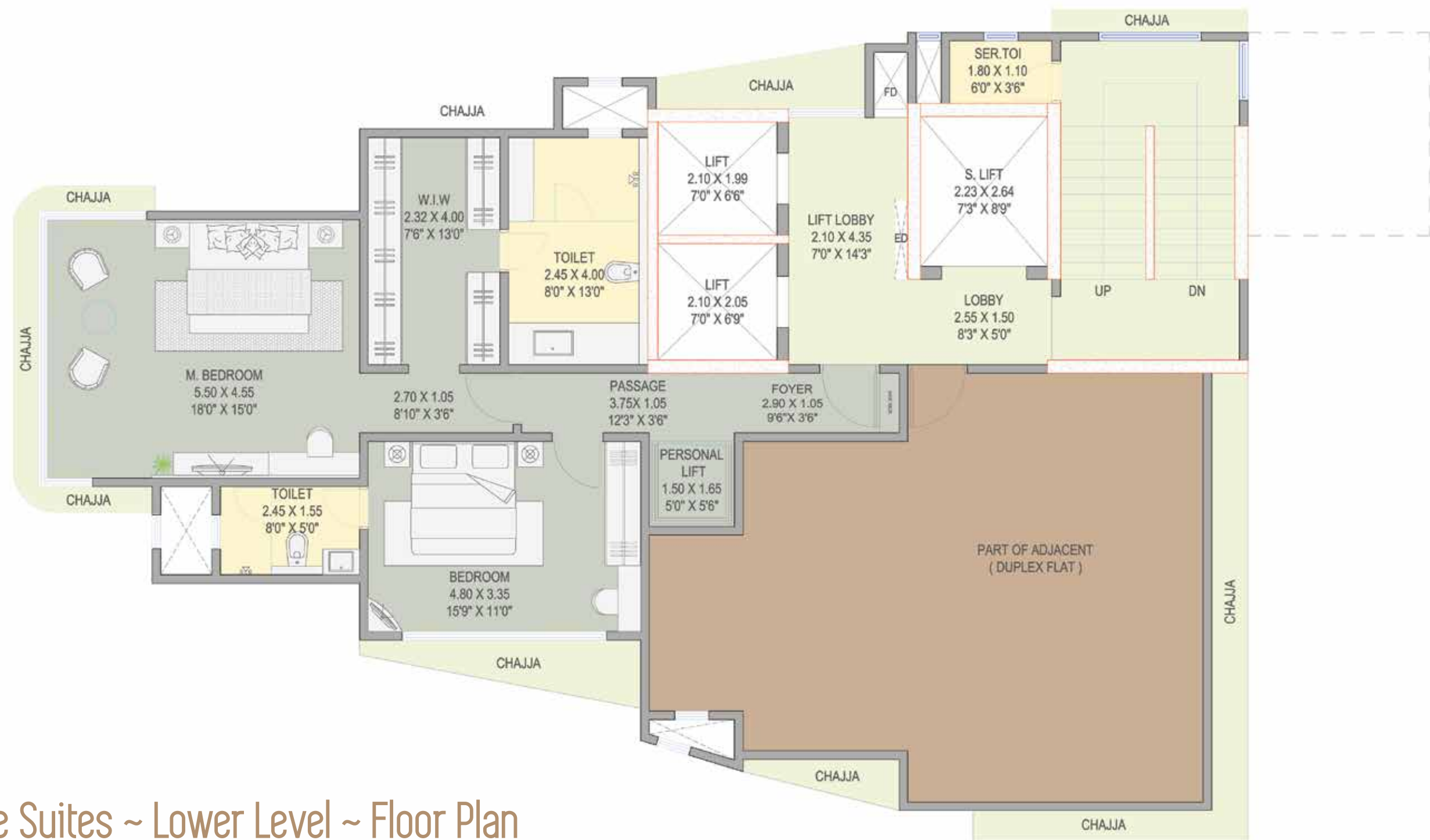
The Royale Suites ~ Upper Level ~ Floor Plan

The furniture shown in the layout is only indicative. Only bare shell residences will be available on sale.



The Royale Suites ~ Upper Level ~ Isometric View

The furniture shown in the layout is only indicative. Only bare shell residences will be available on sale.



The Royale Suites ~ Lower Level ~ Floor Plan

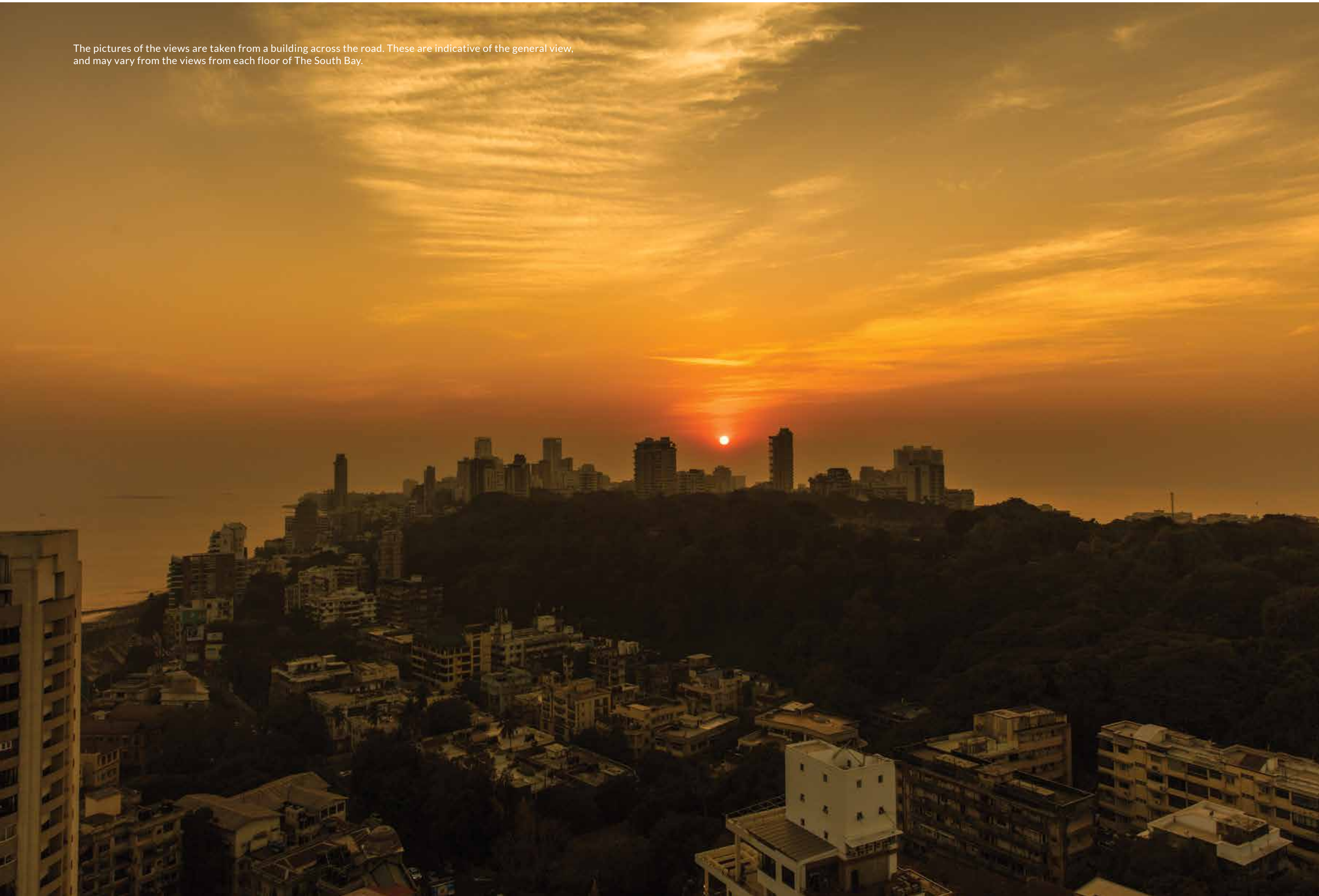
The furniture shown in the layout is only indicative. Only bare shell residences will be available on sale.



The Royale Suites ~ Lower Level ~ Isometric View

The furniture shown in the layout is only indicative. Only bare shell residences will be available on sale.

The pictures of the views are taken from a building across the road. These are indicative of the general view, and may vary from the views from each floor of The South Bay.





MAHARERA Registration No. P51900002722
Also available at website : maharera.mahaonline.gov.in



MESACON
GROUP

TRIUMPH
REALTY

The South Bay, 31, Hughes Road, Mumbai 400 007
www.thesouthbay.in | +91 70 4512 1282

Disclaimer: The images, perspectives, elevations & specifications contained in this brochure are only indicative. The room dimensions in meters are as per approved plans, the dimensions in feet have been rounded off to the closest inch. The Proposed development and building are subject to approval from the respective Authorities. The Developers reserve the right to make changes or alteration to the design of the flats, building, perspectives, elevations, and specifications at their sole discretion without any prior notice.