



# Nivasa Group

REDEFINING LIFESPACES...





# Nivasa Enchante

REDEFINING LIFESPACES...



# About

Nivasa Group, started in the year 2012, Nivasa Group Constructions entered the real estate sector of Pune City in 2012 and since then, we have created a legacy of innovative and futuristic landmarks. We have built over 6 Lakhs sq. ft. of residential & Commercial spaces in Pune.

A young company-with fresh minds and exemplary talent-that has built its business on a simple premise: "Honesty and hard work breeds success".At Nivasa , we believe in giving our best to ensure quality delivery even under most challenging of situations. And our work stands as a fine testimony to this belief.

Ensuring our customers happiness is, and always will be, our foremost priority. Our relations with our customers are cordial and thriving. We take particular care in ensuring that our projects feature precision and perfection across all aspects-so our customers always have a smile on their face!What sets us apart from the competition is an eclectic blend of energetic enthusiasm, sensitivity towards customer needs and our willingness to shoulder complete responsibility for all aspects of our projects. Nivasa is dedicated to provide superior services for our customers and always strive to make their buying experience enjoyable and lovable!We cherish our customer's faith in us – and it inspires us to innovate and achieve greater heights in our ventures.



# Our Projects



## NIVASA MUCHMORE

TINGRE NAGAR

Nivasa MuchMore – MuchMore – Located in Tingre Nagar, Pune. This was started in 2010 & completed in 2012. In this two wings total sale units is 54.



## NIVASA PRAKRITI

LOHEGAON

Nivasa Prakriti offers all the comforts and conveniences of a modern-day urban living infused with tranquillity. Nivasa Prakriti comprises of spacious 1, 1 ½ and 2 BHK apartments ensuring an impeccable lifestyle.



## NIVASA UMANG

KONDHWA

Nivasa Umang invites you to live your life to the fullest. Presenting thoughtfully-designed residences for those who wish to own an enchanting abode for a lifetime. Offering a choice of 1 and 2 BHK apartments, Nivasa Umang is a place where all elements, from views to layout, styling to finish, come together splendidly. So step in and live life with new vigor and zest.





## NIVASA UDAAN

### LOHEGAON

Nivasa Udaan – This project is located in Lohegaon, Pune. Construction with 3 wings A,B & C. This construction started in 2015 & possession started from December 2019 phase wise. Total area for construction 230000 Sq.ft. Completed sold out (239 units).





## Nivasa Aarambh

MOSHI

Aarambh, a lavish and well thought project located primly in Moshi, PCMC. Construction with 5 wings A,B,C,D & E. This construction started in 2016 & possession started from December 2019 phasewise. Total area for construction 245000 Sq.ft. Completed sold out (268 units).





## Nivasa Elevia

### KESHAV NAGAR

Nivasa Udaan – This project is located in Lohegaon, Pune. Construction with 3 wings A,B & C. This construction started in 2015 & possession started from December 2019 phasewise. Total area for construction 230000 Sq.ft. Completed sold out (239 units).



# WHERE WE ARE LOCATED





# NIVASA ENCHANTE



## LOCATION

Lohegaon

## CONFIGURATION

2,2.5 & 3 Bhk Luxury Homes

Total units : 232

Number of Towers 04 : B+1P+13 Floors





# Additional Features

- Biometric Lock
- Offering fresh & Clean air.
- East / West Entrance apartment.
- Thoughtful amenities for all age groups.
- Blending traditional values
- Electrical Car charging Point provision.
- My Gate (Security)







*Top View*





Entrance





Club House & Kids Playing Area





Club House





Football court and Batmetal court





Open Gym & Children Playing Area





*Amphitheater, Yoga & Meditation Space*





Swimming Pool





# Nivasa Enchante Amenities

- Box Cricket
- Football court
- Swimming Pool
- Designer Club House
- Multipurpose / Basketball Practice Court
- Children's Play Area with rubber matting
- Indoor Games
- Jogging Track
- Gymnasium Open air & Closed
- Meditation Area
- Party Lawn With Stage
- Barbeque Area
- Ample Seating & Conversation Areas
- Amphitheatre
- Ground floor Society office
- Provision for MNGL gas pipeline
- Projector along with screen for club house
- Bus Bay





2 BHK

789 sq.ft.

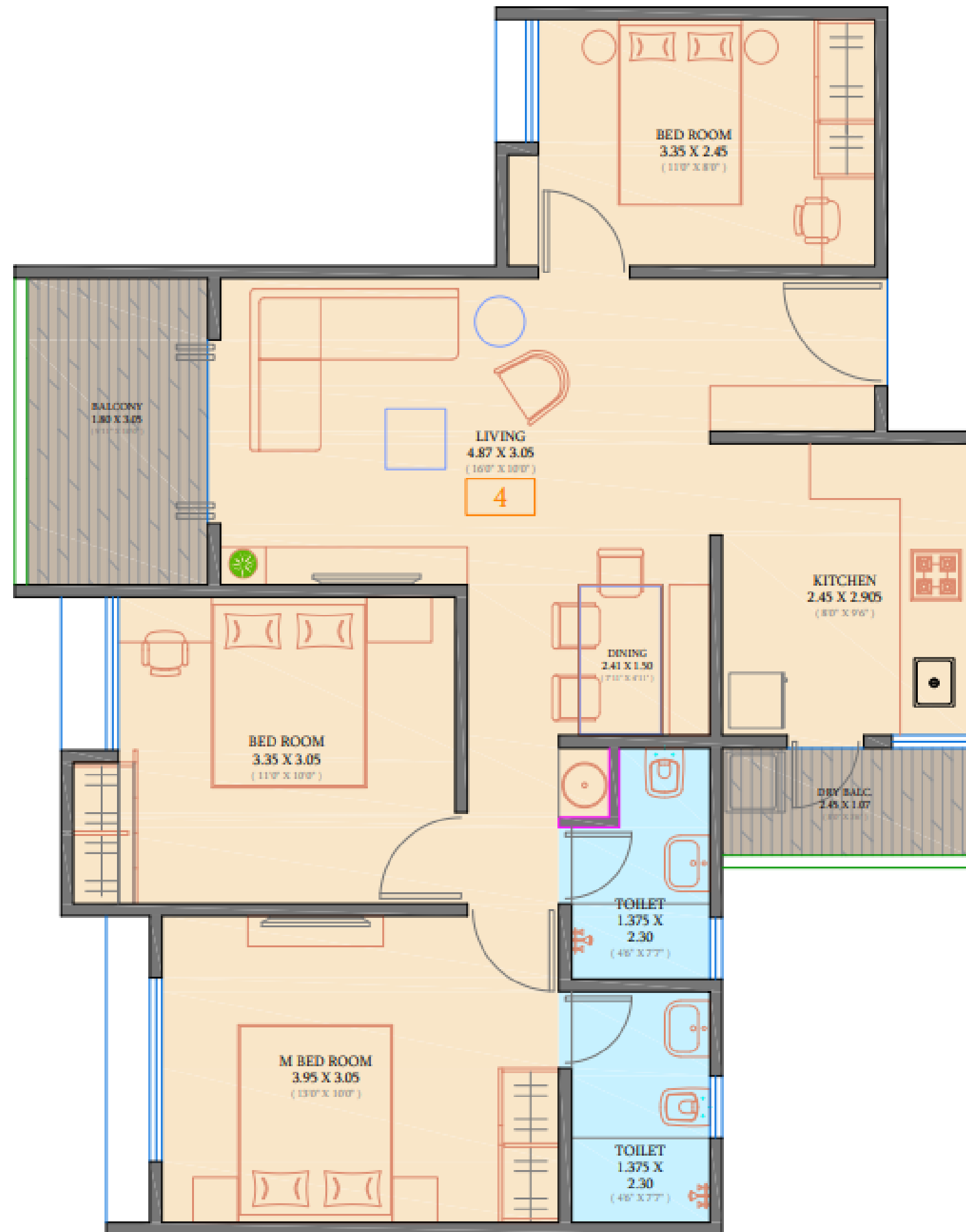






2.5 BHK

858 sq.ft.





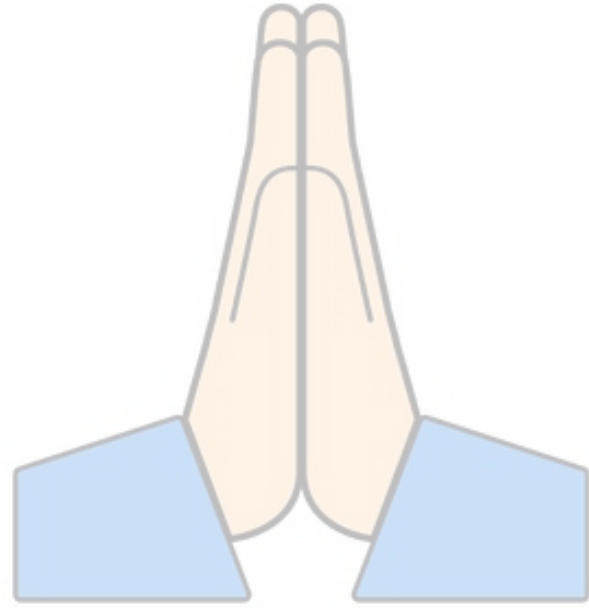


3 BHK

1041 sq.ft.







THANK YOU

