

Explore the
lavish Experiences...



Registration No.

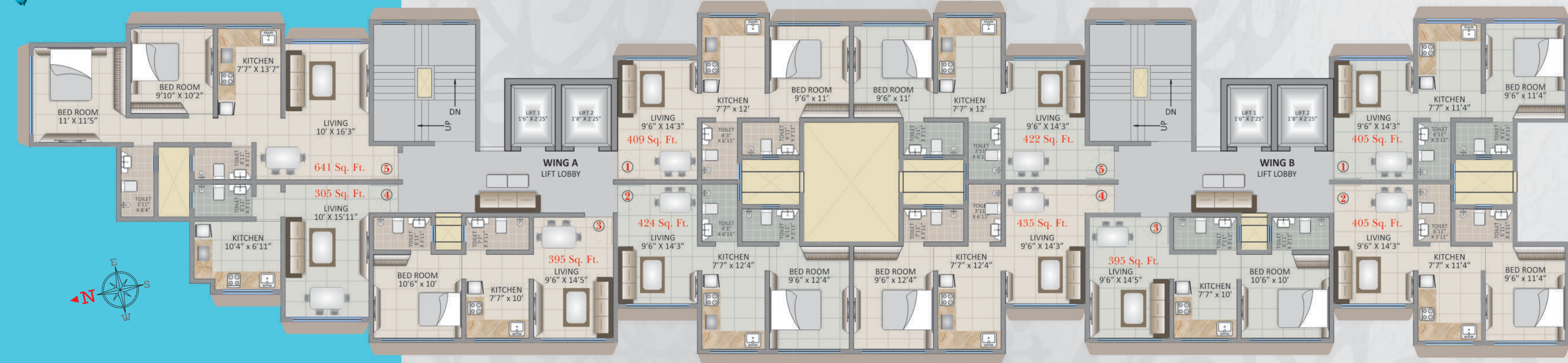
P51800005734

<https://maharera.mahaonline.gov.in>



Tanishq Residency

Typical *floor plan* A & B Wing



Tanishq Residency

Lifestyle you need yours... Try ours
Experience a true meaning of living in Style....

Tanishq Residency, here life is a celebration.

The joy of living can be witnessed and experienced everywhere in this architectural wonder. It promises to be a community designed for world class living in a green sanctuary - a modern lifestyle in a haven of peace and tranquillity. With beautifully designed high-rise towers and superb artistry that match the world's best residential complex. Tanishq Residency gives a perfect setting for you and your loved ones.

Prathamesh Developers has been making your dream homes a reality for over a decade now. Our group is well known for making quality residential cum commercial projects. Having completed many projects over the years. Prathamesh Developers are well-known builders in Mumbai and have managed to finish all the projects way ahead of schedule as well. We build more than just homes; we build communities and for last few years we have been building beautiful, luxury, lifestyle, premium, dream home communities where neighbours become friends. We offer a combination of quality materials and superior design, where every detail is meticulously crafted. We believe that preserving the natural environment is an integral part of creating communities. And you will be proud to call this place your home.

We offer an environment perfectly designed for luxurious and peaceful living. The location and beauty of luxuriously designed spaces are here to make your everyday living full of conveniences. Tanishq Residency luxury apartment are set to inspire all your senses. When you enter you'll discover that everything is perfectly designed to win your appreciation.

- Earthquake resistant RCC structure
- Reputed elevators
- Attractive compound wall with entrance gate
- Decorative entrance lobby
- Well paved compound area
- Exterior surface with acrylic paint coat
- CCTV cameras & 24/7 security system

lifestyle of exquisite elegance

Flooring

- Vitrified flooring tiles in all the rooms

Kitchen

- Granite kitchen platform with stainless steel sink
- Provision for water purifier and multi points for fridge / microwave etc.

Bath

- Concealed plumbing with good quality sanitary fittings
- Luxurious & modernized fittings
- Designer tiles up to beam level
- Anti skid tiles flooring in bath
- Good quality aluminium louvers in bath
- Provision for geyser point

Electrical

- Concealed copper wiring with reputed brand modular switches, telephone and TV (cable) points in living room and bed rooms

Wall Finish

- Internal walls with gypsum finish

Windows

- Anodized aluminium sliding windows with clear glass

Door

- Main and internal door with decorative laminate finish
- Granite frame for all the doors of bath
- Wooden door frames for all rooms
- Main door with good quality night latch and decorative handle

Water Tank

- Underground & overhead tank with adequate storage capacity





Connectivity

Vidyavihar Railway Station	5 mins	Jolly Gymkhana	5 mins
Kohinoor Hospital	5 min	Phoniex Market City	10 mins
Don-Bosco School	2 min	Bandra Kurla Complex	15 mins
Kohinoor City Mall	3 min	Domestic & International Airport	20 mins
Fatima High School	5 mins		

Corporate Office:

Prathmesh Developers
 CTS No 1269, The Palms, 1st Floor, C-102,
 Vidya CHS, Chittaranjan Nagar,
 Rajawadi, Ghatkopar East,
 Mumbai - 400077
 Tel - (022) 2102 5575



PRATHMESH DEVELOPERS

Site Office:

Tanishq Residency
 CTS No. 636 (PT), Near Premire,
 Kurla Carshed Road, Gate No. 6
 Vidyavihar West, Mumbai 400 070.
 Mob. - +91-93246 23783

Architect
 Pagnis & Pagnis

RCC Consultant
 Dilip Parekh

Legal Advisor
 Bipin Joshi

Designing Architech
 Ramesh Tambat

* This brochure is purely conceptual, indicative and not a legal offering. All illustrations & pictures are artist's impression only. The plans, drawing, amenities etc. are subject to the approval of respected authorities and may be changes without notifications if necessary. The Promoter / Architect reserves the right to add / desire / alter any items / details / specifications / elevations mentioned here in. The amenities shown inside and stock images in the brochure are purely indicative.