

— WISH TOWN —
KLASSIC



AN ARTISTIC IMPRESSION OF THE LIVING ROOM IN KLASSIC APARTMENTS.

GET READY FOR A DREAM LIFESTYLE THAT'S A BEAUTIFUL EXPERIENCE WITH EVERY PASSING DAY. WELCOME TO WISH TOWN KLASSIC WHERE ALL YOUR WISHES COME TO LIFE. BE IT SPACE, GREENERY, FACILITIES, OR THE ELEGANT NEIGHBOURHOOD, IT OFFERS THE BEST, MAKING IT THE PERFECT HOME YOU ALWAYS WISHED FOR.

WISH TOWN KLASSIC BRINGS YOU SIMPLEX APARTMENTS, SURROUNDED BY METICULOUSLY LANDSCAPED GREENS WHERE ALL HOMES OFFER SPLENDID VIEWS OF THE BEAUTIFUL GARDENS AND PARKS. THESE SIMPLEX APARTMENTS REFLECT SIMPLE YET ELEGANT DESIGN IN 2 & 3 BEDROOM OPTIONS.

WISH TOWN IS COMPLETE WITH ALL RECREATIONAL AND LEISURE AMENITIES SUCH AS SOCIAL CLUBS, HEALTH SPA, FITNESS CENTRES, KID'S PLAY AREA, RECREATIONAL SPORTS FACILITIES, ETC.

ALL THIS COMES AS PART OF JAYPEE GREENS ENDEAVOUR TO BRING YOU THE BEST HOUSING OPPORTUNITIES IN NOIDA AT NEVER BEFORE PRICE.



JAYPEE GREENS, WISH TOWN, NOIDA MASTER PLAN

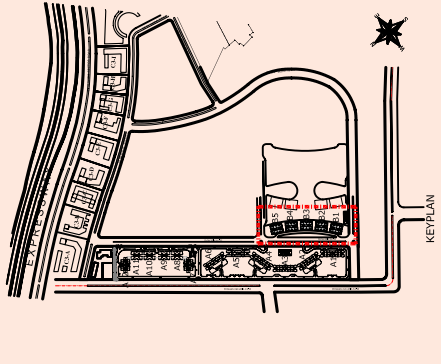
ARCOP
MAY 2011

THIS IS ONLY AN ARTISTIC IMPRESSION OF THE MASTER PLAN. THE ACTUAL MASTER PLAN LAYOUT, CONSTRUCTION DESIGNS, SPECIFICATIONS, DIMENSIONS, ETC. MAY BE AT VARIANCE FROM THE INDICATIONS MADE SUBJECT TO SITE CONDITIONS, ARCHITECTURAL REQUIREMENTS, AESTHETICS AND STATUTORY APPROVALS.

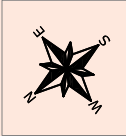
WISH TOWN KLASSIC - SITE PLAN



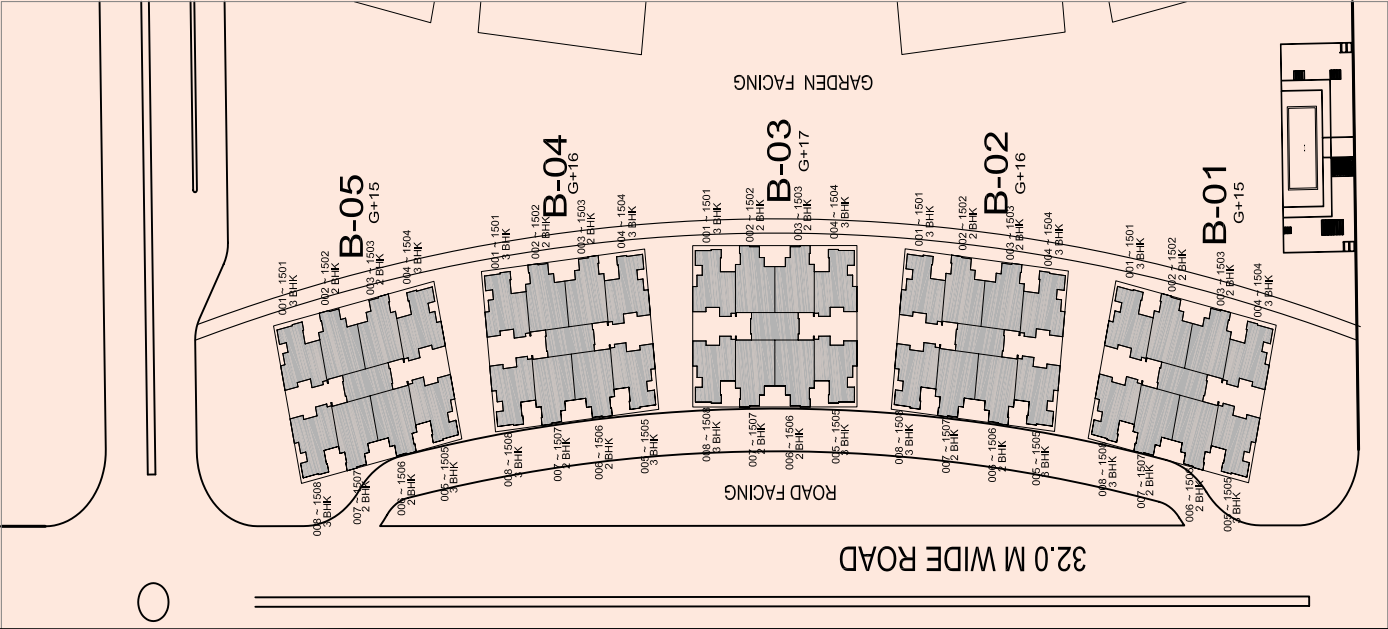
THIS IS ONLY AN ARTISTIC IMPRESSION OF THE MASTER PLAN. THE ACTUAL MASTER PLAN LAYOUT, CONSTRUCTION DESIGNS, SPECIFICATIONS, DIMENSIONS, ETC. MAY BE AT VARIANCE FROM THE INDICATIONS MADE SUBJECT TO SITE CONDITIONS, ARCHITECTURAL REQUIREMENTS, AESTHETICS AND STATUTORY APPROVALS.



NUMBERING PLAN - B1~B2 SIMPLEX

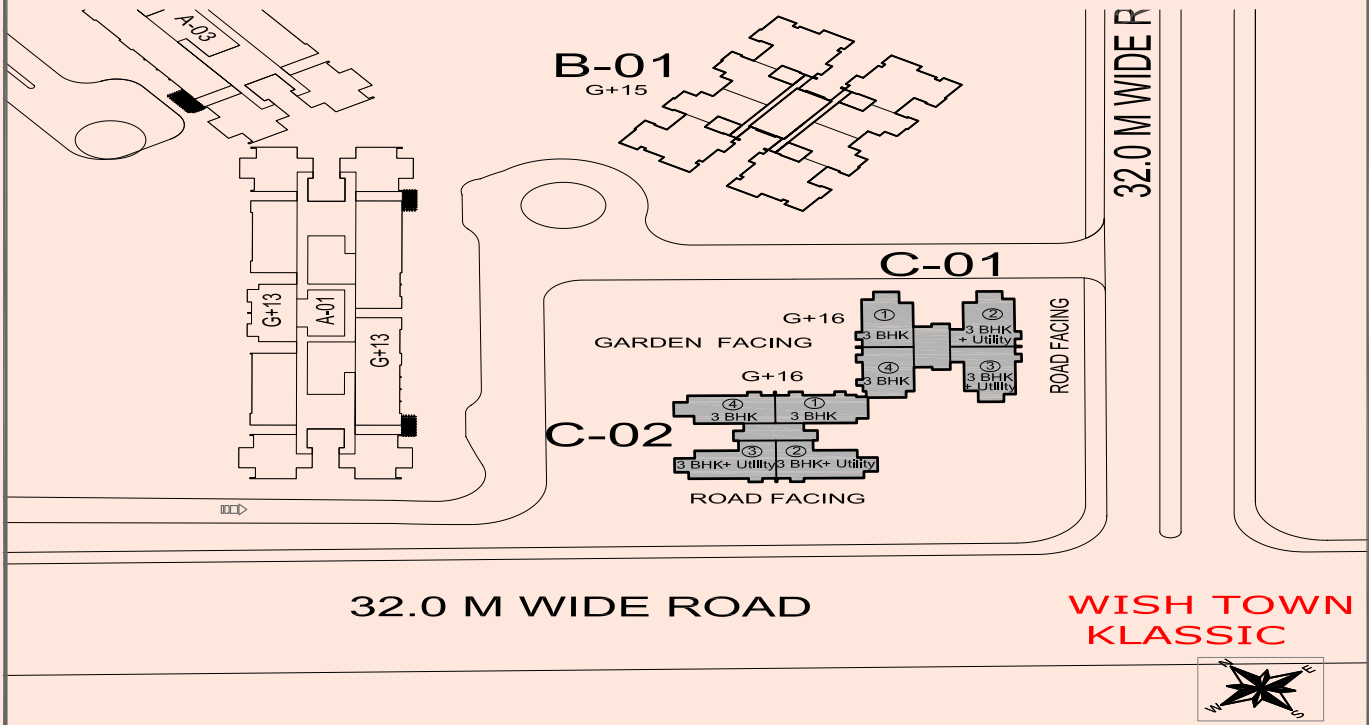
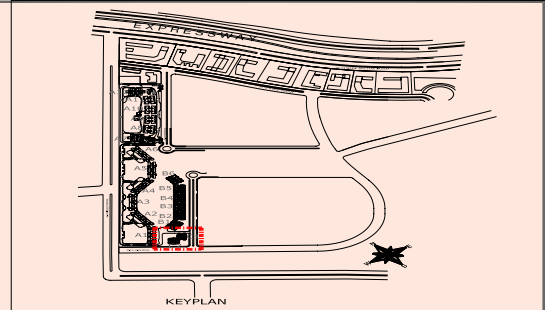


WISH TOWN KLASSIC



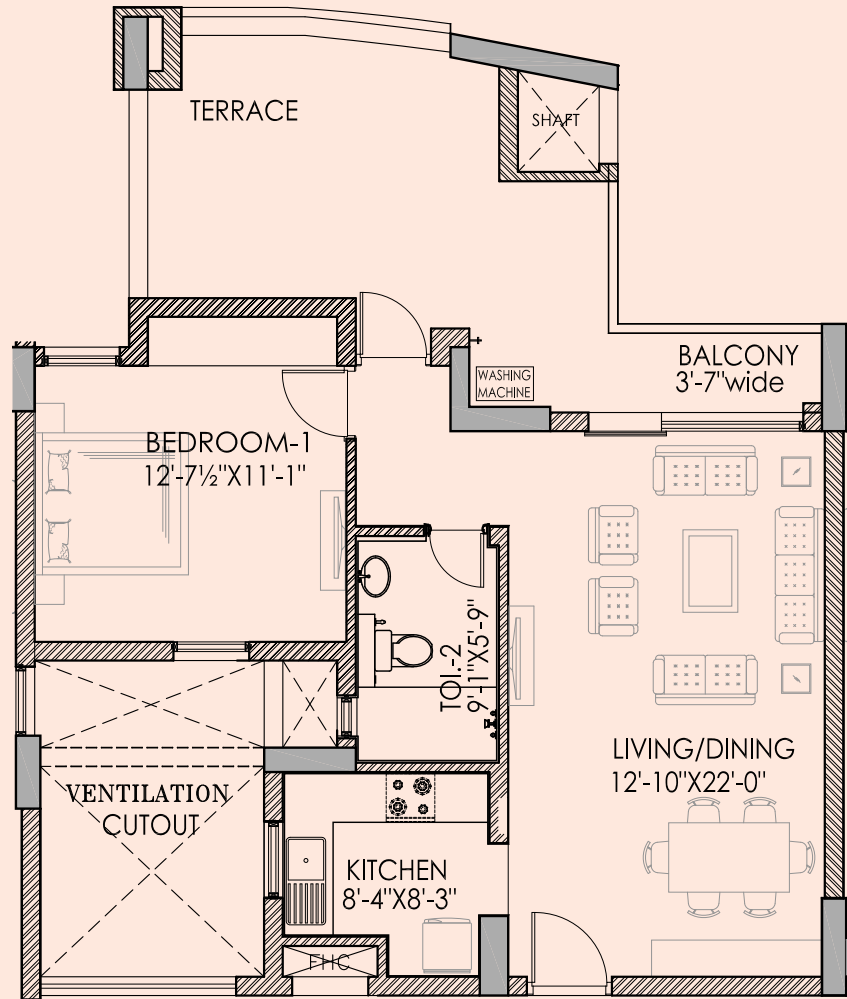
THIS IS ONLY AN ARTISTIC IMPRESSION OF THE MASTER PLAN. THE ACTUAL MASTER PLAN LAYOUT, CONSTRUCTION DESIGNS, SPECIFICATIONS, DIMENSIONS, ETC. MAY BE AT VARIANCE FROM THE INDICATIONS MADE SUBJECT TO SITE CONDITIONS, ARCHITECTURAL REQUIREMENTS, AESTHETICS AND STATUTORY APPROVALS.

NUMBERING PLAN - C1~C2 SIMPLEX



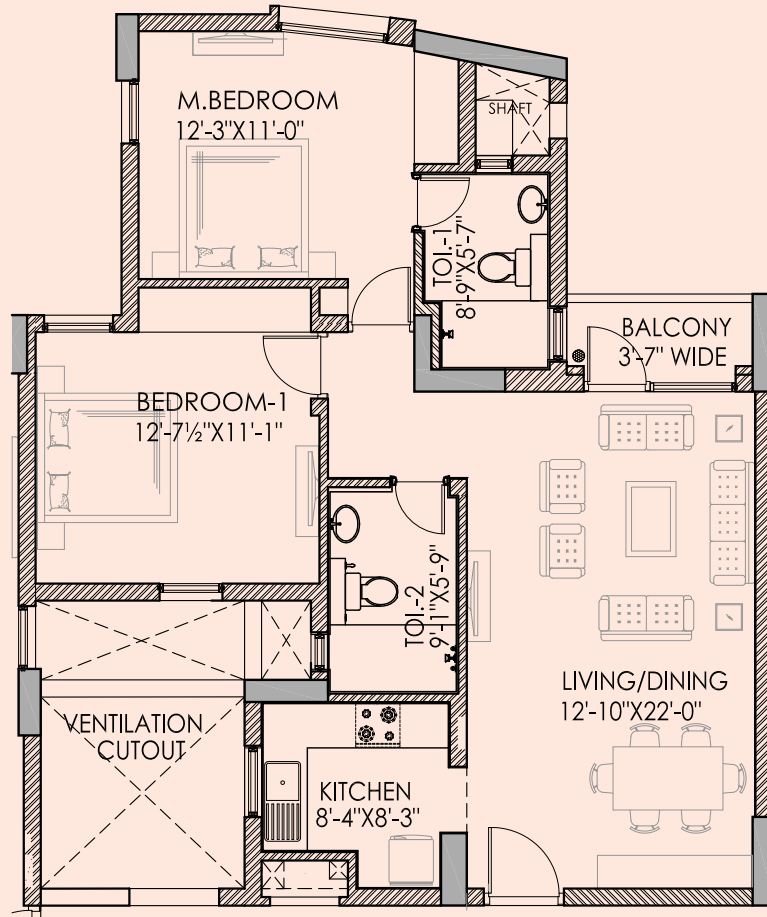
PRODUCT LEVEL SPECIFICATIONS

STRUCTURE	R.C.C FRAMED STRUCTURE
LIVING ROOM, DINING ROOM AND LOUNGE	
FLOORS	TILES / LAMINATED FLOOR
EXTERNAL DOORS AND WINDOWS	ALUMINIUM POWDER COATED / UPVC
WALLS	INTERNAL : OIL BOUND DISTEMPER
	EXTERNAL : GOOD QUALITY EXTERNAL GRADE PAINT
INTERNAL DOORS	ENAMEL PAINTED FLUSH DOORS
BEDROOMS AND DRESS	
FLOORS	TILES / LAMINATED FLOOR
EXTERNAL DOORS AND WINDOWS	ALUMINIUM POWDER COATED / UPVC
WALLS	INTERNAL : OIL BOUND DISTEMPER
	EXTERNAL : GOOD QUALITY EXTERNAL GRADE PAINT
INTERNAL DOORS	ENAMEL PAINTED FLUSH DOORS
TOILETS	
FLOORS	ANTI SKID CERAMIC / VITRIFIED TILES
EXTERNAL DOORS AND WINDOWS	ALUMINIUM POWDER COATED / UPVC
FIXTURE AND FITTINGS	ALL PROVIDED OF STANDARD COMPANY MAKE
WALLS	TILES IN CLADDING UPTO 7' IN SHOWER AREA AND 3' - 6" IN BALANCE AREAS, BALANCE WALLS PAINTED IN OIL BOUND DISTEMPER
INTERNAL DOORS	ENAMEL PAINTED FLUSH DOORS
KITCHEN	
FLOORS	ANTI SKID CERAMIC / VITRIFIED TILES
EXTERNAL DOORS AND WINDOWS	ALUMINIUM POWDER COATED / UPVC
FIXTURE AND FITTINGS	MARBLE TOP WITH SINK
WALLS	CERAMIC TILES 2' - 6" ABOVE COUNTER, BALANCE WALLS PAINTED IN OIL BOUND DISTEMPER
BALCONIES / VERANDAH	
FLOORS	CERAMIC / VITRIFIED MOSAIC TILES
RAILINGS	MS RAILING AS PER DESIGN
LIFT LOBBIES / CORRIDORS	
FLOORS	CERAMIC / MOSAIC TILES / MARBLE / KOTA OR EQUIVALENT
WALLS	OIL BOUND DISTEMPER



1BHK WITH TERRACE **KLASSIC - II, Pocket B-41A & B42** **Approx. SALE AREA = 1015 - 1025**
 (TOWER A-3,A9,A10,B1,B2,B3,B4,B5,B6) JAYPEE GREENS ,SECTOR - 128, NOIDA SCALE :- N.T.S. 20-03-2012


1BHK.UNIT-B1

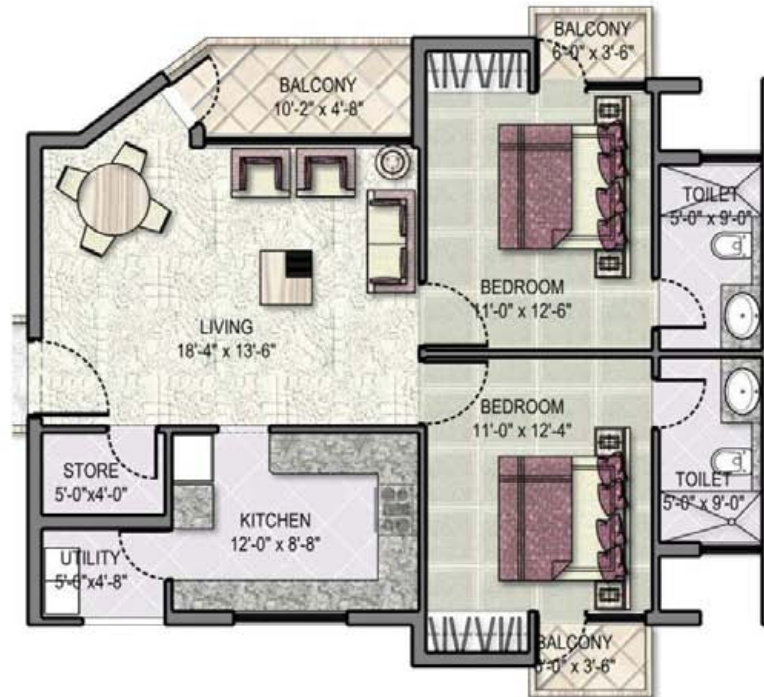


2BHK UNIT - B

2BHK UNIT
(TOWER A-8,A9,A10,B1,B2,B3,B4,B5,B6)

KLASSIC - II, Pocket B-41A & B42
JAYPEE GREENS, SECTOR - 128, NOIDA

Approx. SALE AREA = 1145 - 1255
SCALE : N.T.S. 20-03-2012



Tower - KNG-3 Area: 1247 sq.ft.(approx.) 2BHK



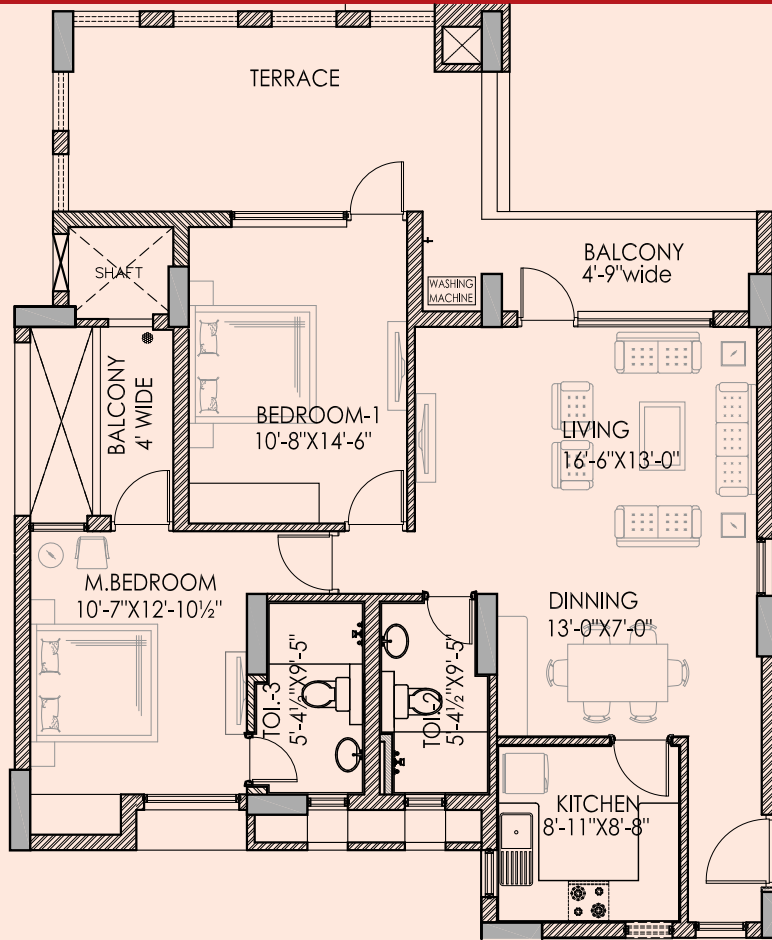
JAYPEE GREENS

KLASSIC C1 & C2 TOWER

3 BHK UNIT

Saleable Area: 1270 sq.ft. (approx.)

3 BHK



2BHK UNIT-B1

<p>2BHK WITH TERRACE (TOWER A-8,A9,A10,B1,B2,B3,B4,B5,B6)</p>	<p>KLASSIC - II, Pocket B-41A & B42 JAYPEE GREENS , SECTOR - 128, NOIDA</p>	<p>Approx. SALE AREA = 1480 - 1490 SCALE :- N.T.S. 20-03-2012</p>
---	--	--

PROFILE OF BALCONY
ABOVE AT 5TH, 9TH,
13TH & 17TH FLOOR

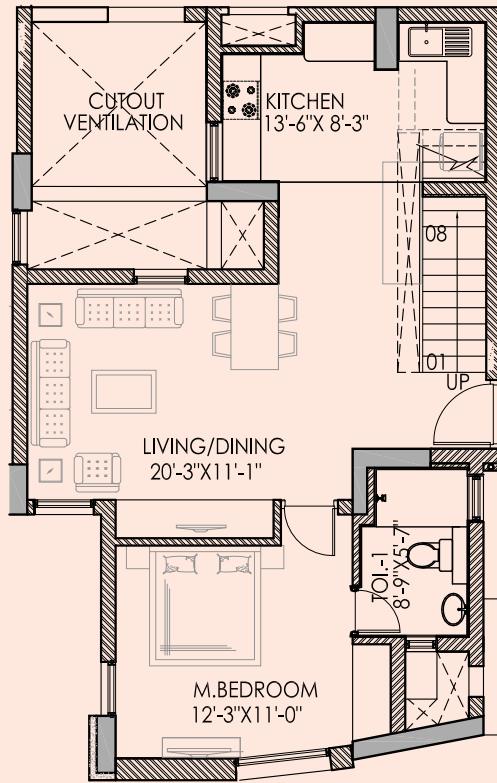


Saleable Area:
1711 sq.ft. (approx.)
3 BHK+Worker

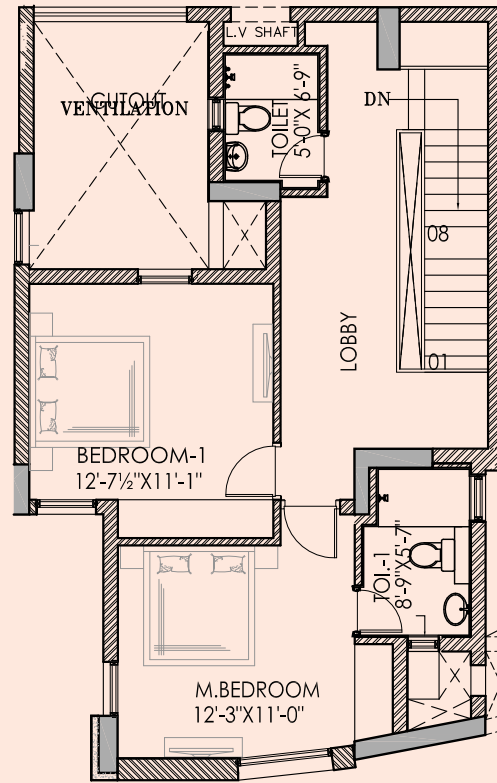
JAYPEE GREENS
KLASSIC HEIGHTS B-34A

3BHK + WORKER
D4 & D5 TOWER
(SCALE 1:50)

ARCOP
E-106, GREATER KALASH ENCLAVE-I,
NEW DELHI-110048, INDIA



GROUND FLOOR PLAN



1ST FLOOR PLAN

3BHK UNIT (DUPLEX)

3BHK (DUPLEX)
(TOWER A-8,A9,A10,B1,B2,B3,B4,B5,B6)

KLASSIC - II, Pocket B-41A & B42
JAYPEE GREENS ,SECTOR - 128, NOIDA

Approx.
SALE AREA = 1700 SFT
SCALE :- N.T.S. 20-03-2012

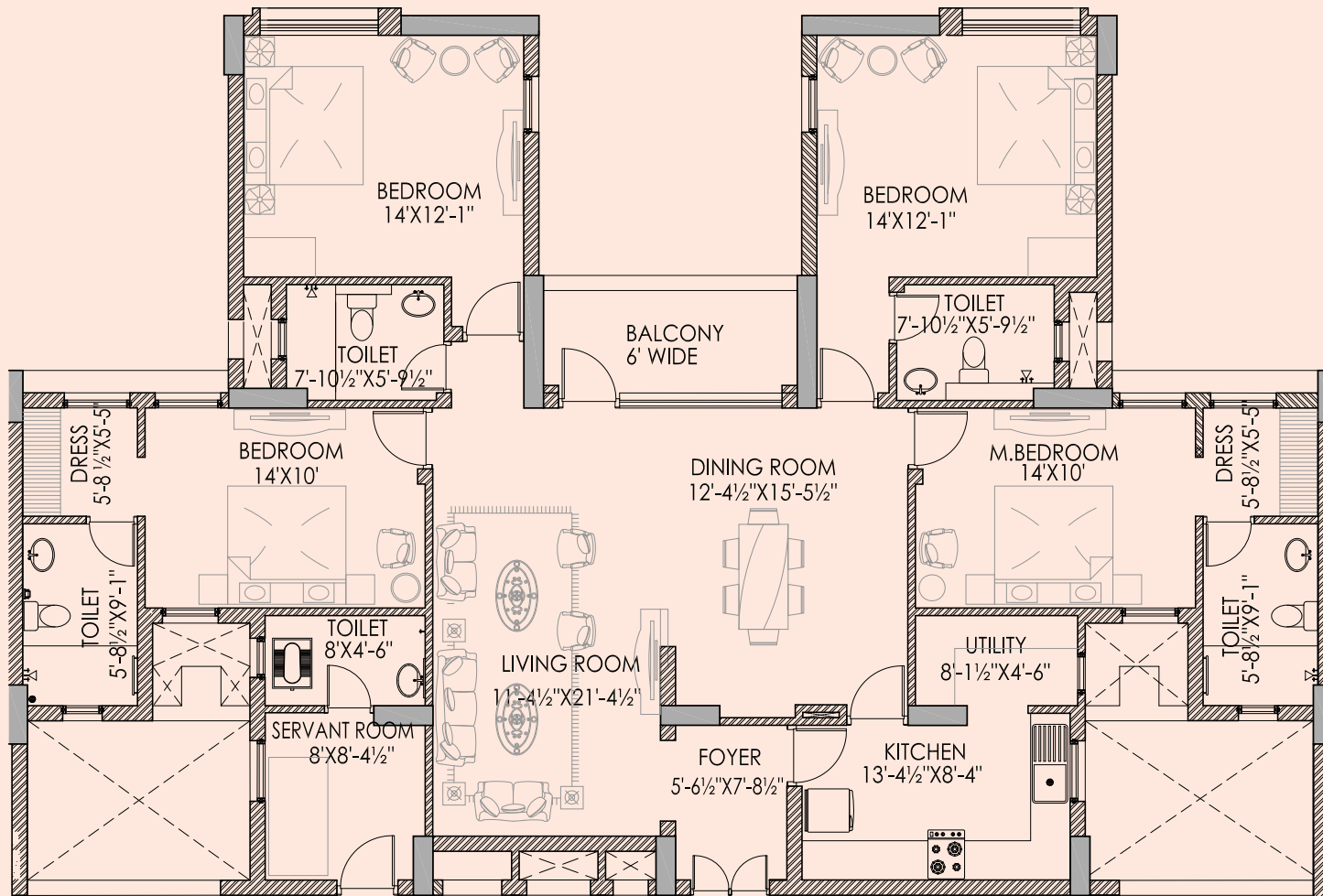


SALE AREA
 4BHK + WORKER = 2345 sq.ft.
 Approx.

JAYPEE GREENS
 KLASSIC HEIGHTS B-34A

4BHK + WORKER
 D4 & D5 TOWER
 (SCALE 1:50)

ARCOP
 E-106, GREATER KALASH ENCLAVE - I,
 NEW DELHI-110048, INDIA



4BHK UNIT-D

4BHK UNIT
(TOWER B-3, B-4)

KLASSIC - II, Pocket B-42
JAYPEE GREENS, SECTOR - 128, NOIDA

Approx.
SALE AREA 2425 SFT
SCALE :- N.T.S. 20-03-2012

LOCATION MAP



Map Not To Scale

The drive to Jaypee Greens Noida is 10 minutes from DND Flyway, 15 minutes from Greater Noida, 20 minutes from South Delhi, 25 minutes from Connaught Place, 45 minutes from International Airport.