

THE TEAM

VITAN CONSULTANTS
Architect

GA DESIGN
Design Architect

AR SWATI JOSHI
Landscape Designee

J.W CONSULTANTS LLP
R. C. C. Consultant

JSM FIRE SOLUTION
Fire Consultant

LAWMAN CONCEPT LLP
Legal Adviser

DR. ARUN KUMAR BOPPANA
Vaastu Consultant

SHEETAL ENVIRONS
Plumbing Consultant

MUNGEKAR & ASSOCIATES
Rain Water Harvesting
Consultant

RAHUL ABHIYANTRIKA PVT LTD
Electrical Consultant

STRUCTWELL DESIGNERS & CONSULTANTS PVT LTD
Concrete Design

A PROJECT BY



Site Address: Regency Luxuria, Vicco Naka, Sonar Pada, Dombivli (E), Maharashtra - 421 203
Corporate Address: Regency Nirman Limited, Regency House, Near Aman Talkies, Ulhasnagar - 421 002
Tel.: 0251-2808161 | www.regencyluxuria.in | www.regencygroup.co.in | info@regencygroup.co.in



Regency Luxuria registered via MahaRERA Reg. No.: P51700031251 also available at maharera.mahaonline.gov.in under registered projects.

Disclaimer: All the images, pictorials, visuals, elevations, perspectives, illustrations, model, specifications, plans, designs, drawings, dimensions, maps, facilities, amenities, features, and other information / details herein are conceptual, indicative and for representation purpose only and are not to scale, and is subject to the approval of the respective authorities. The Promoters / Developers / Architect reserve the right to add, alter, delete or replace any of these in the interest of the development, without any notice or obligation. This printed material does not constitute an offer or contract of any nature whatsoever between the Promoters / Developers and the recipient. All transactions in this development shall be subject to and governed by the terms & conditions of the Agreement for Sale to be entered into between the parties. T&C apply.

WHERE LIFE GOES ELITE



DOMBIVLI (E)



ESTABLISHED TO MAKE AN ELITE DIFFERENCE IN FINE LIVING.

Regency Group started its journey in the realm of real estate under the astute leadership of its founder and pioneer Mr. Mahesh Agarwal- Chairman and Managing Director of Regency Group. Over the years it has grown to reach the sky in terms of stature and success with an emphasis and focus on quality, quantity, and efficiency.

Incorporated in the year 2001 with the core objective of giving a new dimension to the concept of fine living, Regency Group comes up with creations that have transformed lives and lifestyles in more ways than one.

Through the years, Regency Group has evolved with time but without compromising on its performance which has been pivotal to the trust that the Group has garnered for itself to date.

OVER
21 YEARS
OF REALTY

13 MILLION
SQ. FT.
DEVELOPED

OVER
20 PROJECTS
DELIVERED

17,000 +
HAPPY FAMILIES
RESIDING

“ THE USUAL LIFE

Being surrounded
by a world of concrete.

” THE ELITE LIFE

Being embraced by
an open world.

EVERY DAY
FEELS EXTRAORDINARY WHEN
YOUR LIFESTYLE TURNS ELITE.



DOMBIVLI (E)

Ultra-Spacious 2, 3, 4 & 5 BHK
with elite class living spaces,
amenities & locational comforts.

Located at Dombivli's most prime spot, Luxuria places you at the epicentre of a life that's leagues above the ordinary. From life-essential facilities in your vicinity to multiple routes for efficient connectivity, homes with extra-large spaces to a platter of 30 lifestyle amenities.

Regency Luxuria is not just the doorway to a life of unusual luxury but your red carpet to the world of elite living.

A DESTINATION WITH ELITE CONNECTIVITY

Spend less time travelling and more time achieving

Your elite class residence at Regency Luxuria places you next door to a choice of major travel infrastructure including highways, railways and the metro. No matter which means you choose, you get a direct link to any part of the city.



Source: Google Maps, Not to Scale

EVERYTHING FOR ELITE CONVENIENCE, RIGHT AROUND YOU

RAILWAY STATIONS

- Thakurli: 2.5 kms
- Dombivli: 2.9 kms
- Kalyan: 5.1 kms

PROPOSED METRO:

- Kalyan-Taloja Metro line: 500 m

COLLEGES

- KV Pendharkar College: 750 m
- New Era High School & Jr. College: 1.1 kms
- GR Patil College: 1.9 kms
- Shivajirao Jondhale College: 2 kms
- Pragati College: 3 kms
- Swami Vivekanand College: 3.2 kms
- Holy Angels School & Jr. College: 3.3 kms
- Patkar College: 3.4 kms

SCHOOLS

- Narayana E-Techo School: Within premises
- NES International School: 1.7 kms
- Royal International School: 3.3 kms
- Guardian School: 3.7 kms
- Hello Kids Divine: 3.7 kms
- Vidya Niketan School: 4.1 kms
- Ira Global School: 4.8 kms
- St. Therese Convent School: 5 kms

HOSPITALS

- AIMS Hospital: 900 m
- Kamat Hospital for Women: 1.1 kms
- Neptune Super Speciality: 1.2 kms
- Shivam Hospital: 1.8 kms
- Maitri Charitable Trust: 2.1 kms

COMMERCIAL/SHOPPING

- City Mall: 850 m
- Empress Mall: 2.7 kms
- HP World: 3 kms
- DMart: 3.6 kms
- Metro Junction Mall Kalyan: 3.9 kms
- Xperia Mall, Lodha: 6.8 kms

BANKS

- HDFC: 700 m
- PMC Bank: 1.7 kms
- SBI Dombivli East Branch: 2.3 kms
- Andhra Bank: 2.4 kms
- Axis Bank: 3 kms
- Dombivli Nagari Sahakari Bank: 3.2 kms
- Greater Bank: 3.8 kms
- Allahabad Bank: 4.2 kms

TEMPLES

- Gavdevi Mandir: 2 kms
- Mahadev Mandir: 2.3 kms
- Shree Gaondevi Mandir: 2.7 kms
- Shaptashungi Devi Temple: 3.2 kms
- Datta Mandir: 3.2 kms
- Shani Mandir: 3.5 kms

RESTAURANTS

- Nandi Palace: 210 m
- Suyog Hotel: 400 m
- Prasad Food Divine: 2.8 kms
- Dominos Pizza: 2.9 kms



CURRENT INFRASTRUCTURE

Kalyan - Shilphata Road: Shilphata Navi Mumbai will benefit from government infrastructure projects such as the Ghatkopar Ghansoli Link Road, the Airoli Dombivli Tunnel Road, the Monorail between Kharghar and Kalyan, the extension of the Kalyan, Shil Road, and the planned Navi Mumbai Airport. It connects to NH-48 through Kalyan-Shilphata Marg. The Kalyan-Shil Road is a major highway that connects Dombivli and adjoining areas with Thane, Mulund, Airoli, Panvel, and Bhiwandi.

The current expansion plan includes widening it to 6 lanes as well construction of an overpass that will connect this route directly via a bridge or tunnel towards the Multimodal corridor.

The construction of the **Airoli-Katai tunnel Road and 126 km long Alibaug – Virar multimodal corridor** will serve as a major connectivity boost in this region.

FUTURE INFRASTRUCTURE

The Diva and Dombivli stations on the central railway lines are just 15-20 minutes away from Kalyan-Shil Road. The Kalyan-Shil Road is about to undergo a major transformation because of infrastructure projects lined up. The Airoli tunnel road and Multimodal Rail Corridor will reduce traffic on this busy thoroughfare for easier travel.

The Kalyan-Taloja Metro Line will be a game-changer for affordable housing in this region. The Mumbai-Ahmedabad bullet train project adds another feather in Kalyan-Shil Road's cap.

The Thane station on this corridor is just a few kilometers away from Kalyan-Shil Road, which means that all these infrastructure projects will not only improve connectivity but drive-up real estate prices too.





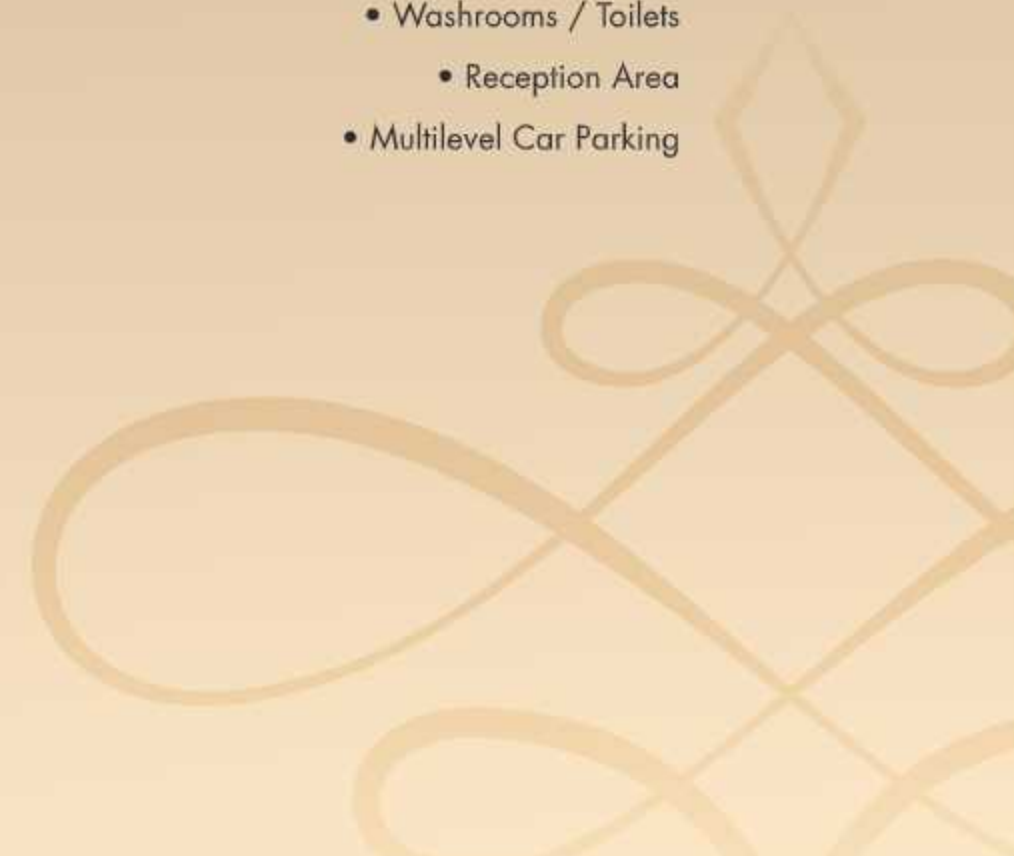
Stock Image

AN ADDRESS WITH AN ELITE CLUBHOUSE

Find 30 luxurious ways to balance
life and work, every day

Discover a Multi-level Clubhouse that welcomes you into
a lavish world of exclusivity with a platter of the
choicest amenities for recreation, leisure and wellness.

- Squash Court
- Badminton Court
- Community Hall
 - Crèche
- Common Gym - Ladies & Gents
 - Aerobics
 - Cafeteria
 - Spa - Ladies
 - Spa - Gents
- Indoor Games Room
 - Swimming Pool
- Yoga and Meditation Centre
 - Washrooms / Toilets
 - Reception Area
- Multilevel Car Parking



A LIFE THAT'S
CALMER, FITTER
& HAPPIER



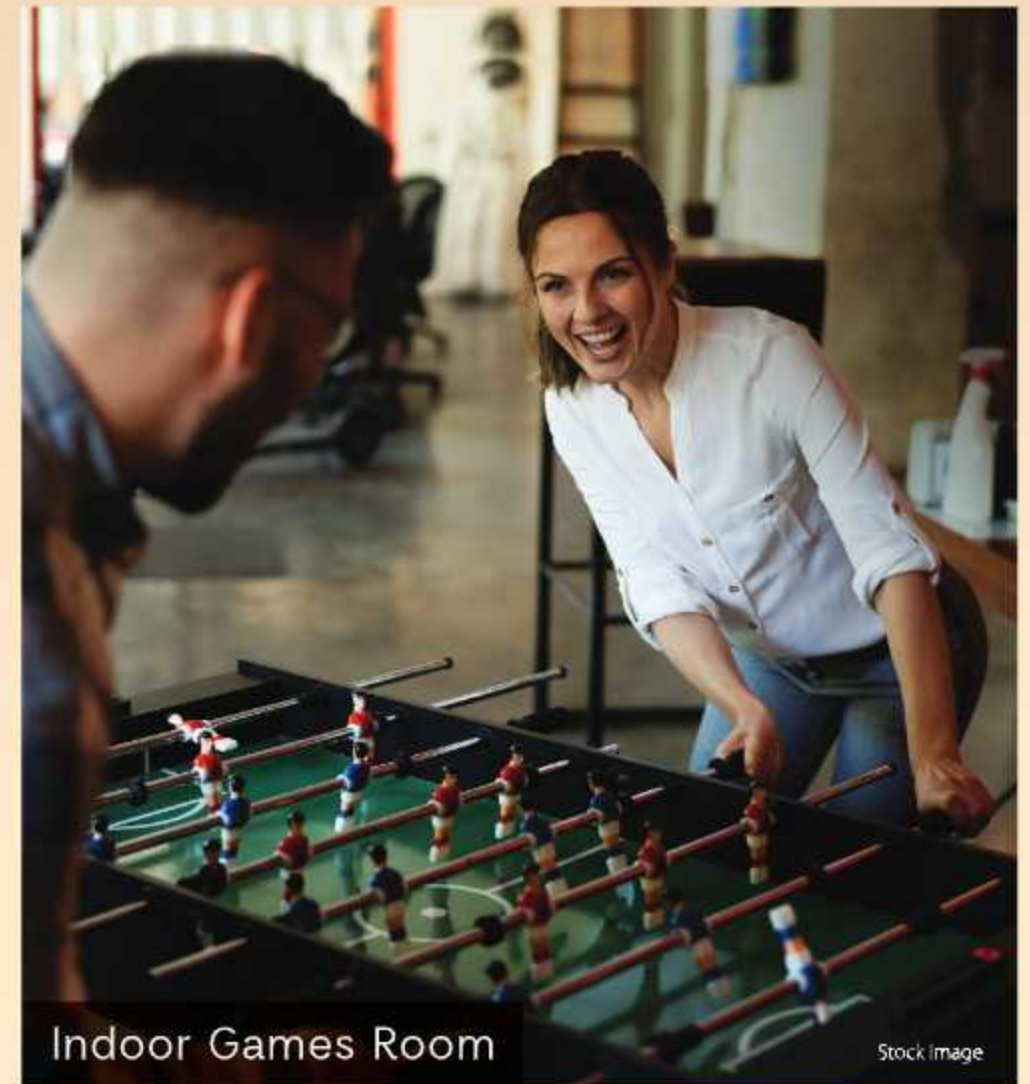
Modern Gymnasium

Stock Image



Yoga & Meditation Center

Stock Image



Indoor Games Room

Stock Image



Reception Area

Stock Image



Cafeteria

Artist's Impression



Community Hall

Stock Image

MAKE EVERY
MOMENT A REASON
TO CELEBRATE

TURN DAILY
UNWINDING INTO
AN EXQUISITE
INDULGENCE



Swimming Pool

Stock image



Squash Court

Stock image



Badminton Court

Stock image

EXPLORE THRILLING REASONS TO INDULGE OUTDOORS

Outdoor Amenities

A multitude of privileges and amenities greet you every day to not just relax and rejuvenate but also to please the athlete inside you.

- Joggers Park / Track
 - Open Gymnasium
- Yoga / Meditation Pavilion
 - Cycling Track
 - Basketball
- Children's Play Area
 - Music Room
- Walk Pathways for Senior Citizens and Children
- Senior Citizens Sitting Corner
 - Gazebo Sit-out
- Acupressure Walkway
 - Trellis
 - Library
 - Pets Corner
- Seating Arrangement
 - Creepers
- Provision for Signages
 - Trees and Plantation



A PERFECT
DESTINATION FOR
FITNESS ENTHUSIASTS



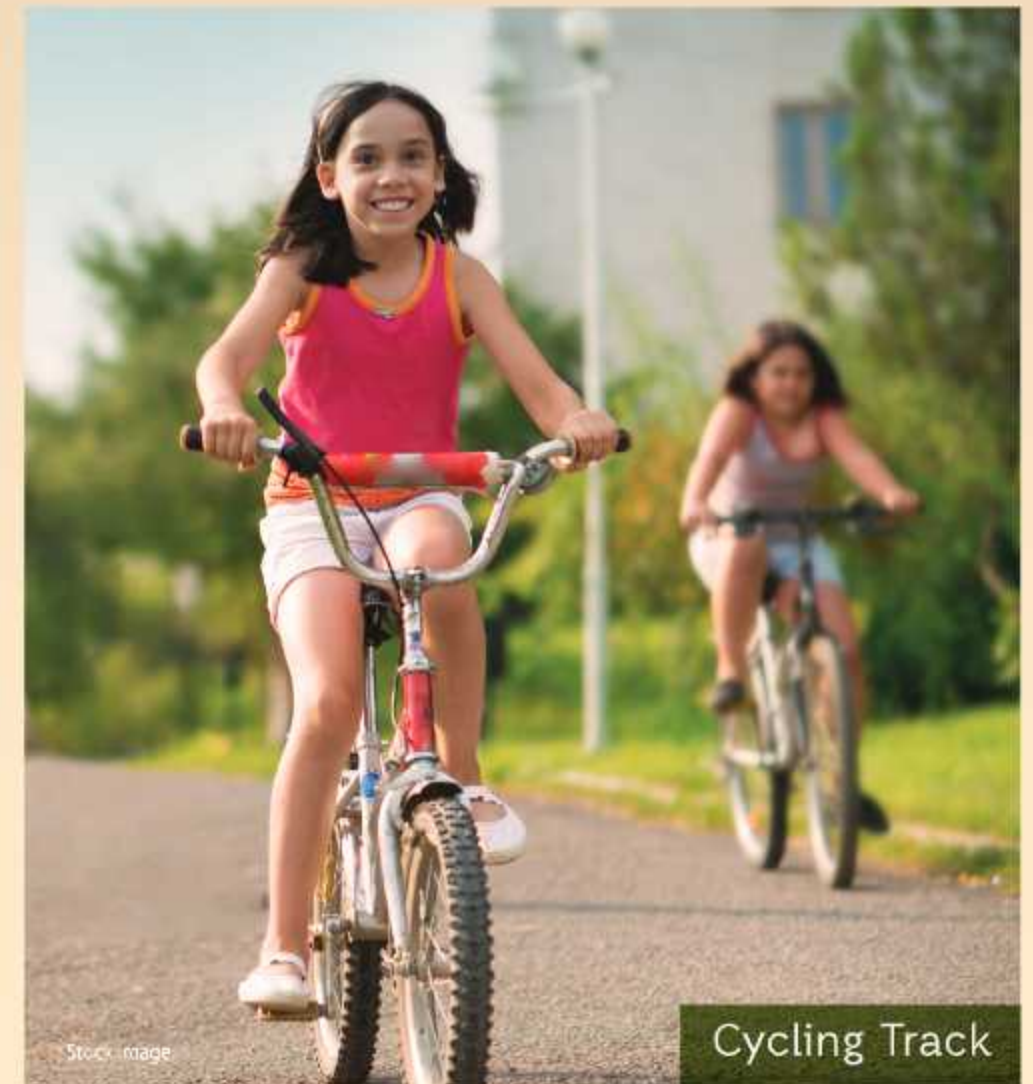
Stock Image

Joggers Track



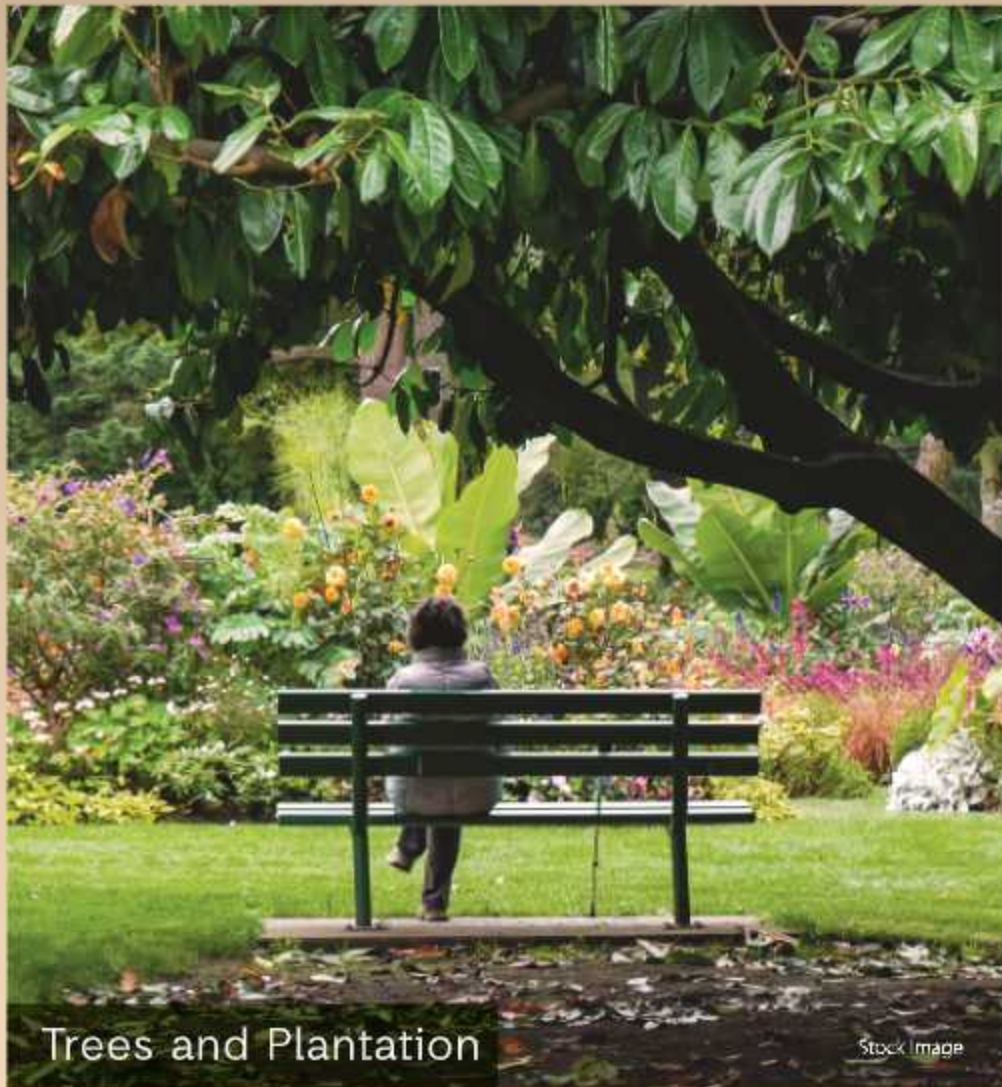
Yoga / Meditation Pavilion

Stock Image



Stock Image

Cycling Track



Trees and Plantation

Stock Image



Gazebo Sit-out

Stock Image



Senior Citizens Sitting Corner

Stock Image

PEACEFUL TIMES
FOR WHOLESOME
LIFE

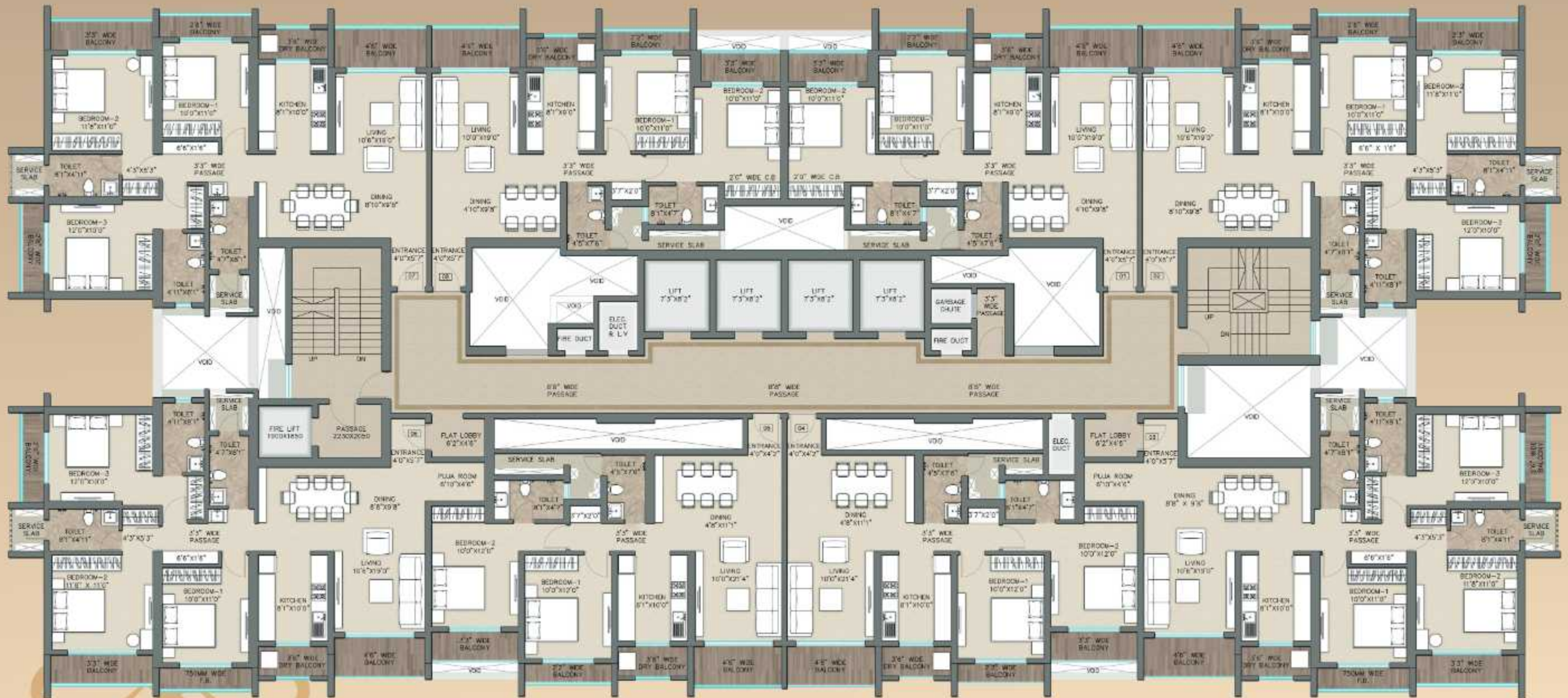
A SIGNATURE
LANDMARK
WITH
ELITE SPACES



Stock Image

TYPICAL FLOOR PLAN

Mountain View

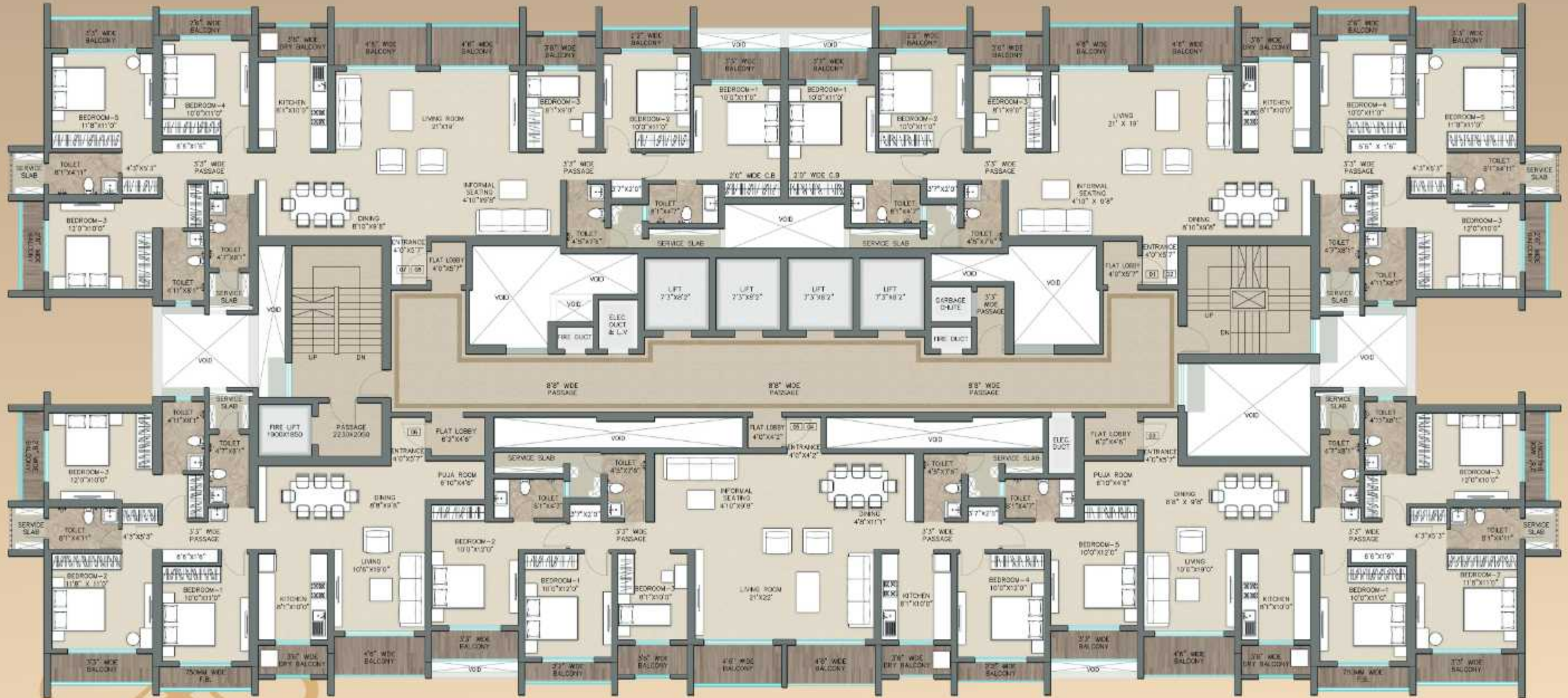


Garden View



TYPICAL FLOOR PLAN JODI FLATS

Mountain View



Garden View



TYPICAL FLOOR PLAN 3D VIEW

Mountain View



Garden View



INTERNAL AMENITIES

FLOORING

- Vitrified Tiles in the Entire Flat
- Anti Skid Tiles in Balcony / Decks / Flower beds

WALL FINISHING

- Internal walls with Gypsum Finish
- Decorative Ceiling
- Plastic Emulsion Paint in the Entire Flat
- Plastic Paint in Bathrooms above Lintel Level

DOORS

- Good Quality Wooden Frame with Oil Paint finish
- Designer Flush Doors with Laminate on both sides

WINDOW

- Colour Anodized Aluminium Sliding Windows
- Mosquito Net Shutter on Windows
- Granite Window Sill

KITCHEN

- Parallel Granite Platform with Stainless Steel Sink and Drainboard
- Water Purifier
- Grills
- Designer Tile Dado Above Platform Up to Lintel Level
- R.C.C Loft
- Washing Machine Provision in Balcony
- Granite Stone fixed for Water Dispense

BATHROOM

- Geysers in All Bathrooms
- CPVC Concealed Piping
- Designer Tile Flooring and Dado up to Lintel Level
- Branded CP Fittings and Sanitary Appliances
- Tube light and Mirror in All Bathrooms
- Exhaust Fan in all Bathrooms
- Wash Basin with Granite Counter In All Bathrooms

ELECTRIFICATION

- Concealed Copper Wiring with Circuit Breakers
- Fans and tube lights in Living Room, Kitchen and Bedrooms
- Split AC in all Bedrooms and Living Room
- Telephone and Cable TV points in Living Room and Bedrooms
- Inverter Provision
- Video Door Provision
- Intercom System

GENERAL FEATURES

- External Wall - Texture and 100% Acrylic + Polymer Paint Finish
- Decorative Entrance Lobby
- Earthquake Resistant RCC Structure
- Solar Provision for Common Lights
- High-Speed Lifts of Reputed Brand
- Generator Back up for Lifts, Staircase Lights, & Water Supply Pumps
- Sewage Treatment Plant

A SUCCESSFULL JOURNEY WITH ELITE MILESTONES

COMPLETED PROJECTS

- THANE • KALAMBOLI
- KHARGHAR • DOMBIVLI
- ULHASNAGAR • TITWALA
- LONAVALA • PUNE



REGENCY MEADOWS
DHANKORI, PUNE



REGENCY HEIGHTS
KOLSHET ROAD, THANE (WEST)



REGENCY ICON
KHARGHAR, NAVI MUMBAI



REGENCY CREST
KHARGHAR, NAVI MUMBAI



REGENCY WILLOWS
LONAVALA, PUNE



REGENCY GARDENS
KHARGHAR, NAVI MUMBAI



REGENCY COSMOS
BANER, PUNE



REGENCY CLASSIC
MOHAN NAGAR, BANER, PUNE



REGENCY ESTATE
DOMBIVLI (EAST)



REGENCY ORION
BANER, PUNE

COMPLETED
PROJECTS



REGENCY ELLANZA
KALAMBOLI, PANVEL

ONGOING
PROJECTS



REGENCY ANANTAM
VICCO NAKA, DOMBIVALI (E)



FLOWER VALLEY
WANOWARAI, PUNE



GREEN VALLEY
WANOWARAI, PUNE



REGENCY AVANA
KALYAN-MURBAD ROAD



REGENCY ANTIILIA
KALYAN-MURBAD ROAD



THE METROPOLITIA
SHIVAJI NAGAR, PUNE



REGENCY SARVAM
TITWALA (EAST)



REGENCY ASTRA
BANER, PUNE