



SARANG

BY SUMADHURA

PHASE - 1

A SIGNATURE SERIES

WHITEFIELD. BANGALORE.





SARANG LUXURY SPACES  
ARE A LIFESTYLE STORY OF  
COMPASSION AND LOVE  
IN MANY HUES  
AT MULTIPLE LEVELS.

2.0 BHK SMART  
3.0 BHK SMART  
3.0 BHK CLASSIC  
4.0 BHK SMART  
4.0 BHK GRAND

---

NO COMMON WALLS

---

A BIOPHILIC  
PROJECT

---

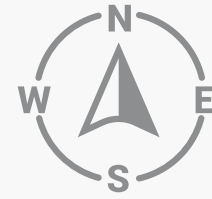
2 TOWERS

---

272 UNITS

---

# MASTER PLAN



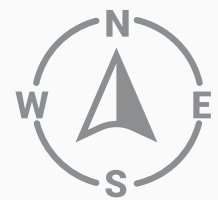
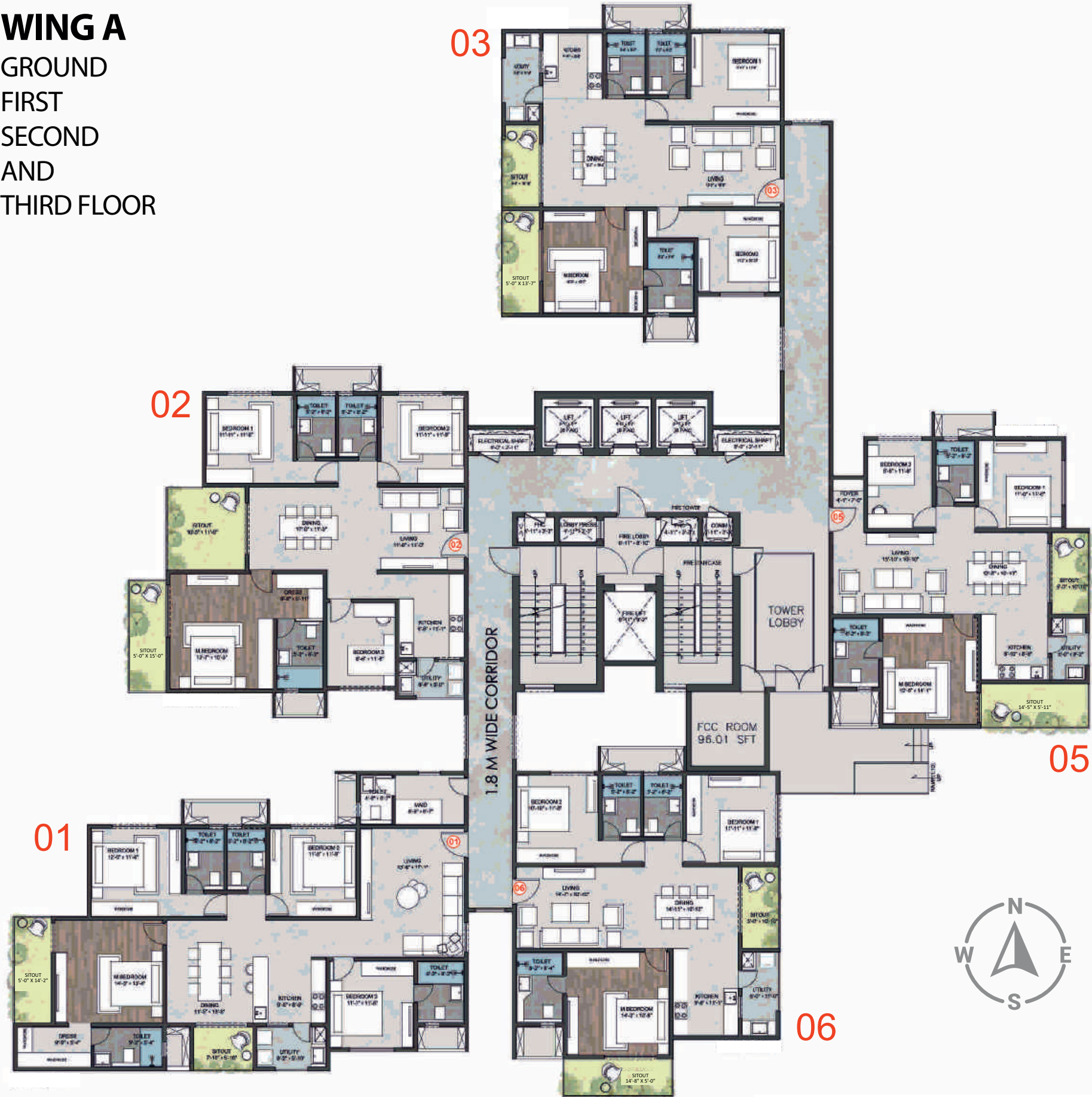
## PHASE 2 WING - C

### LEGEND

- 01. Entrance portal
- 02. Entrance tree plaza
- 03. Jogging track
- 04. Bicycle track
- 05. Children's play area
- 06. Half tennis court
- 07. Amphitheater
- 08. Giant chess
- 09. Skating rink
- 10. Plaza with seating
- 11. Party lawn
- 12. Yoga meditation deck
- 13. Outdoor fitness area
- 14. Cricket pitch
- 15. Swing garden
- 16. Youngster's corner
- 17. Sand pit
- 18. Alcove garden
- 19. Ludo
- 20. Senior citizen's court
- 21. Trampoline garden
- 22. Swimming pool
- 23. Herb garden
- 24. Zen garden
- 24A. Pet park
- 25. Half basket court
- 26. Stage
- 27. Kids pool
- 28. Jacuzzi
- 29. Bus bay
- 30. Waiting pavilion
- 31. Visitors parking
- 32. Bicycle parking
- 33. Security cabin
- 34. Hopscotch
- 35. Pool deck
- 36. Fragrance garden
- 37. Plumeria court
- 38. Tropical garden
- 39. Transformer yard / D.G.Yard
- 40. Provision for gas bank
- 41. Organic waste convertor
- 42. Frisking room
- 43. Toilet (security)

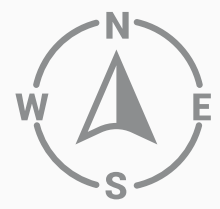
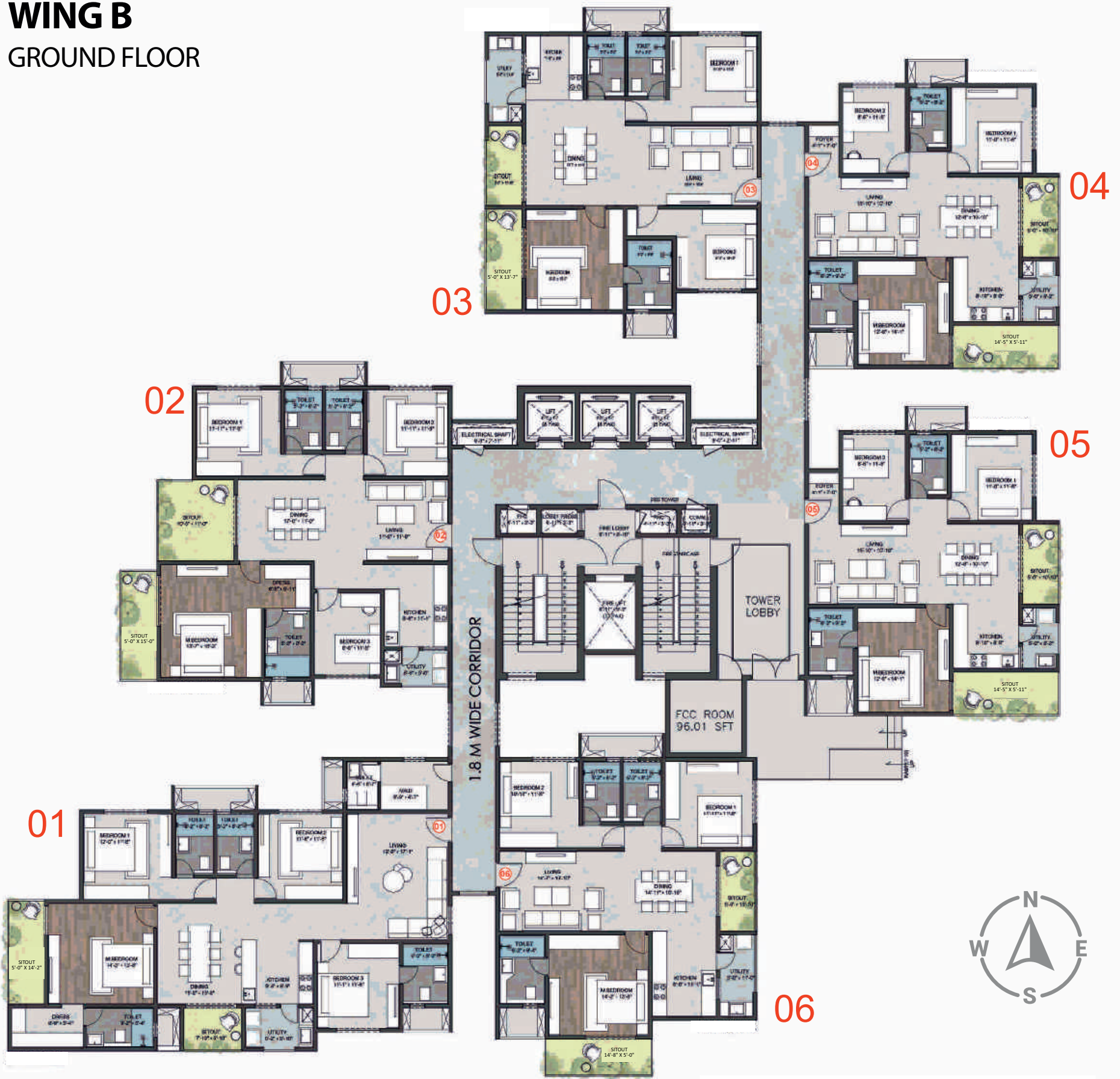
# WING A

GROUND  
FIRST  
SECOND  
AND  
THIRD FLOOR



# WING B

## GROUND FLOOR



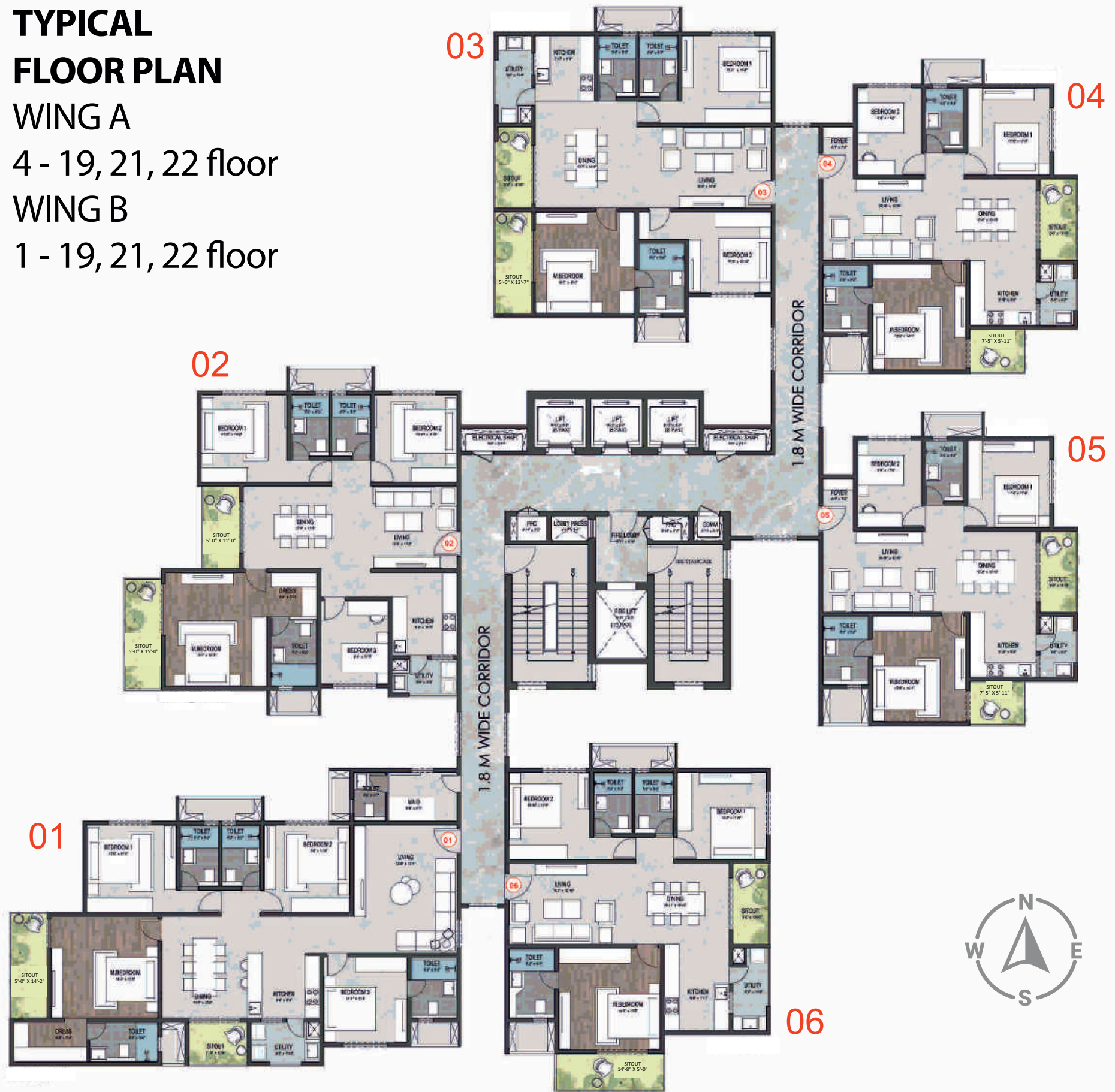
# TYPICAL FLOOR PLAN

WING A

4 - 19, 21, 22 floor

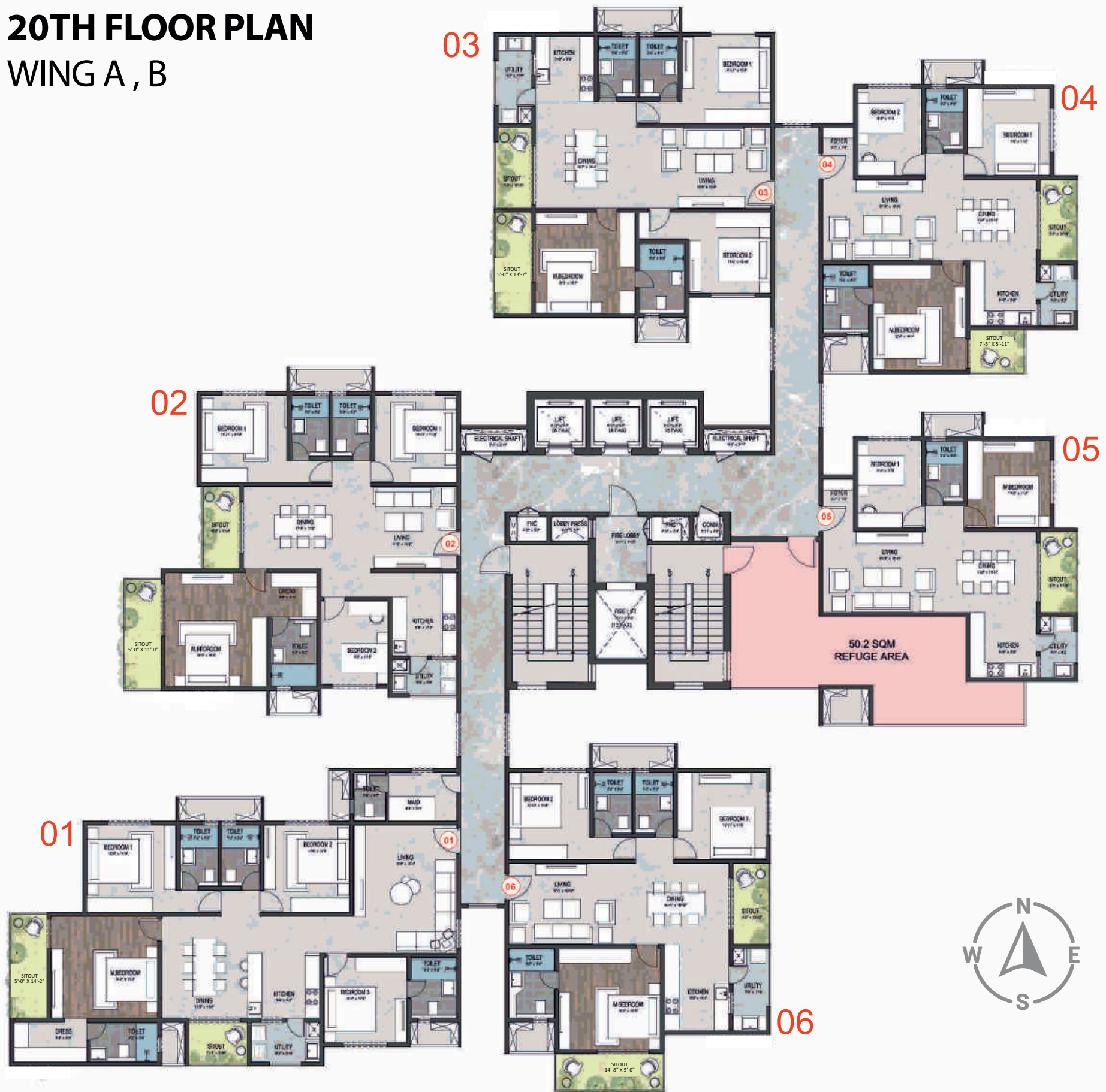
WING B

1 - 19, 21, 22 floor



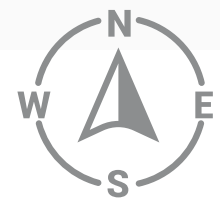
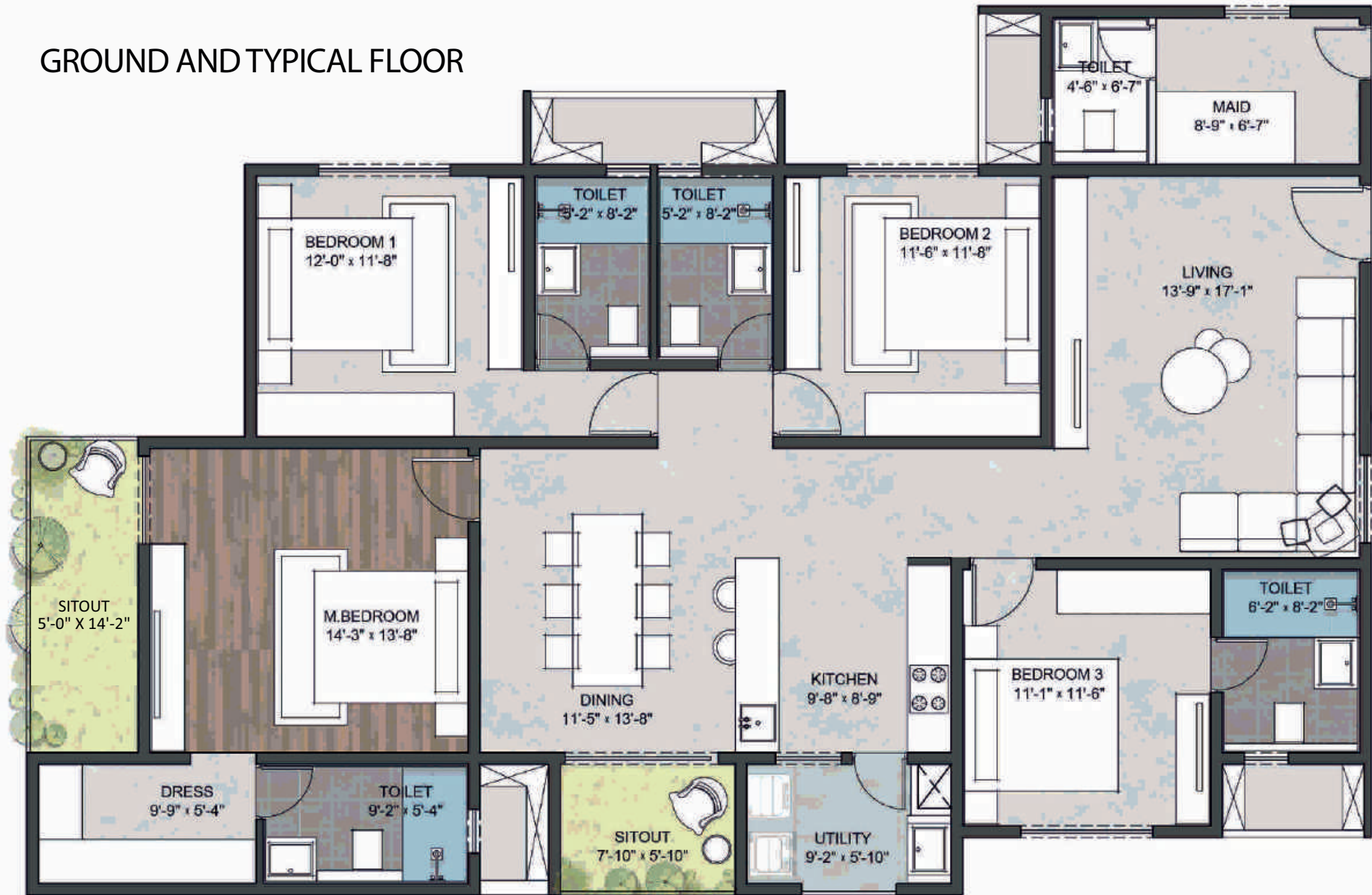
# 20TH FLOOR PLAN

## WING A, B



# UNIT 1 4 BHK GRAND EAST

GROUND AND TYPICAL FLOOR



**WING A, B**

**A 001 - A 2201; B 001 - B 2201**

SBUA - 2580 sft

CARPET AREA - 1640 sft

BALCONY - 110 sft



# UNIT 2 4 BHK SMART EAST

TYPICAL FLOOR

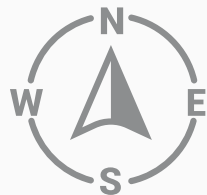
WING A , B

A 102 - 2202, B 102 - 2202

SBUA - 2135 sft

CARPET AREA - 1340 sft

BALCONY - 121 sft



# UNIT 2 4 BHK SMART EAST

GROUND FLOOR

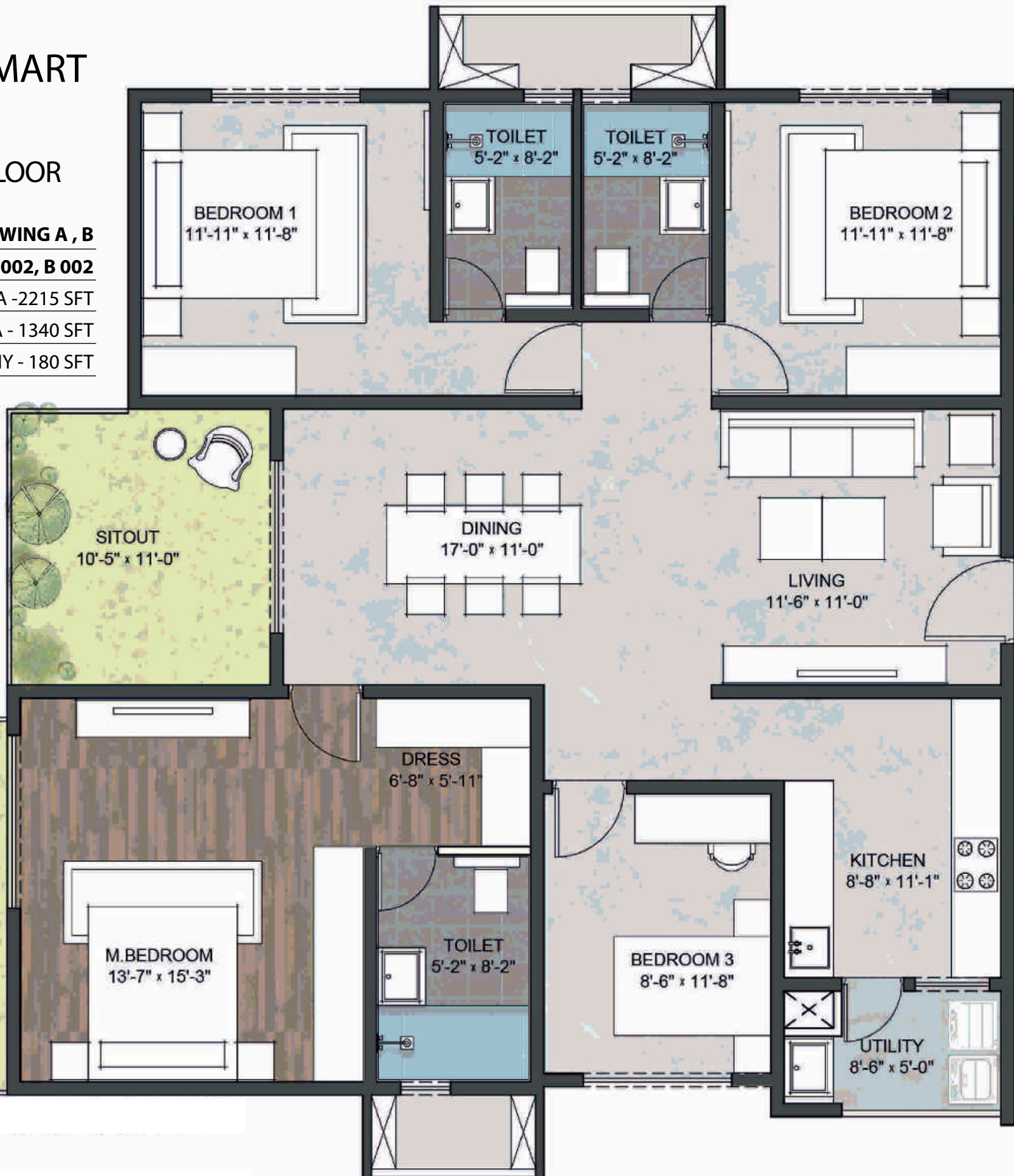
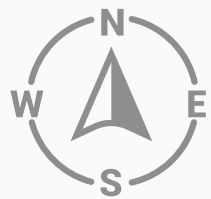
WING A , B

A 002, B 002

SBUA -2215 SFT

CARPET AREA - 1340 SFT

BALCONY - 180 SFT



# UNIT 3 3 BHK CLASSIC EAST

GROUND AND  
TYPICAL FLOOR

WING A , B

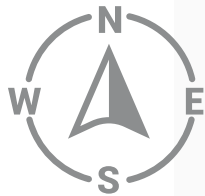
A 003, A 103 - A 2203

B 003, B 103 - B 2203

SBUA -1920 sft

CARPET AREA - 1193 sft

BALCONY - 115 sft



# UNIT 4 3 BHK SMART WEST

TYPICAL FLOOR

WING A , B

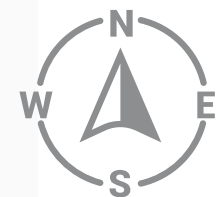
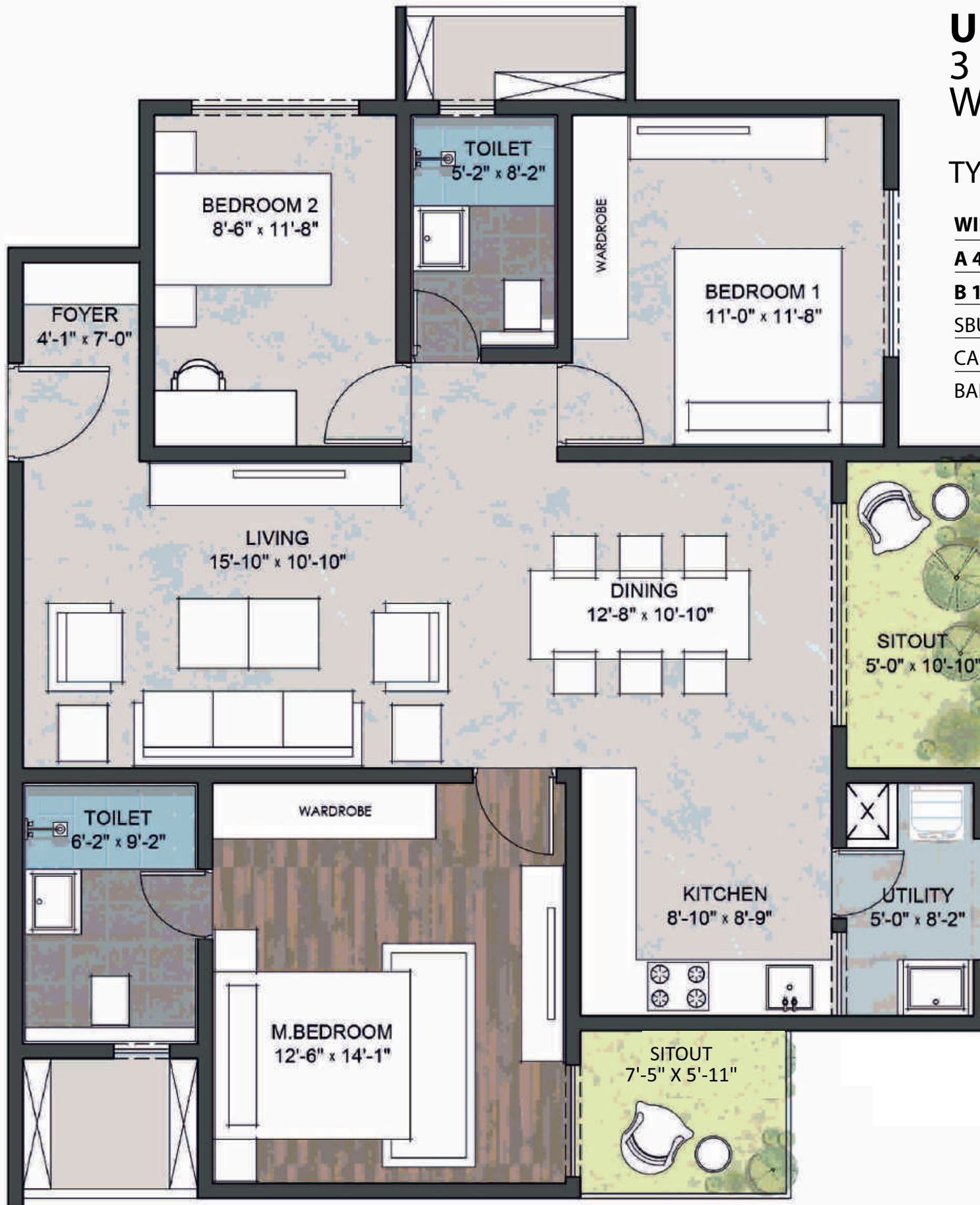
A 404 - A 2204

B 104 - B 2204

SBUA -1655 SFT

CARPET AREA - 1022 SFT

BALCONY - 91 SFT



# UNIT 4 3 BHK SMART WEST

GROUND FLOOR

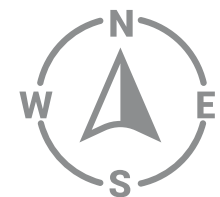
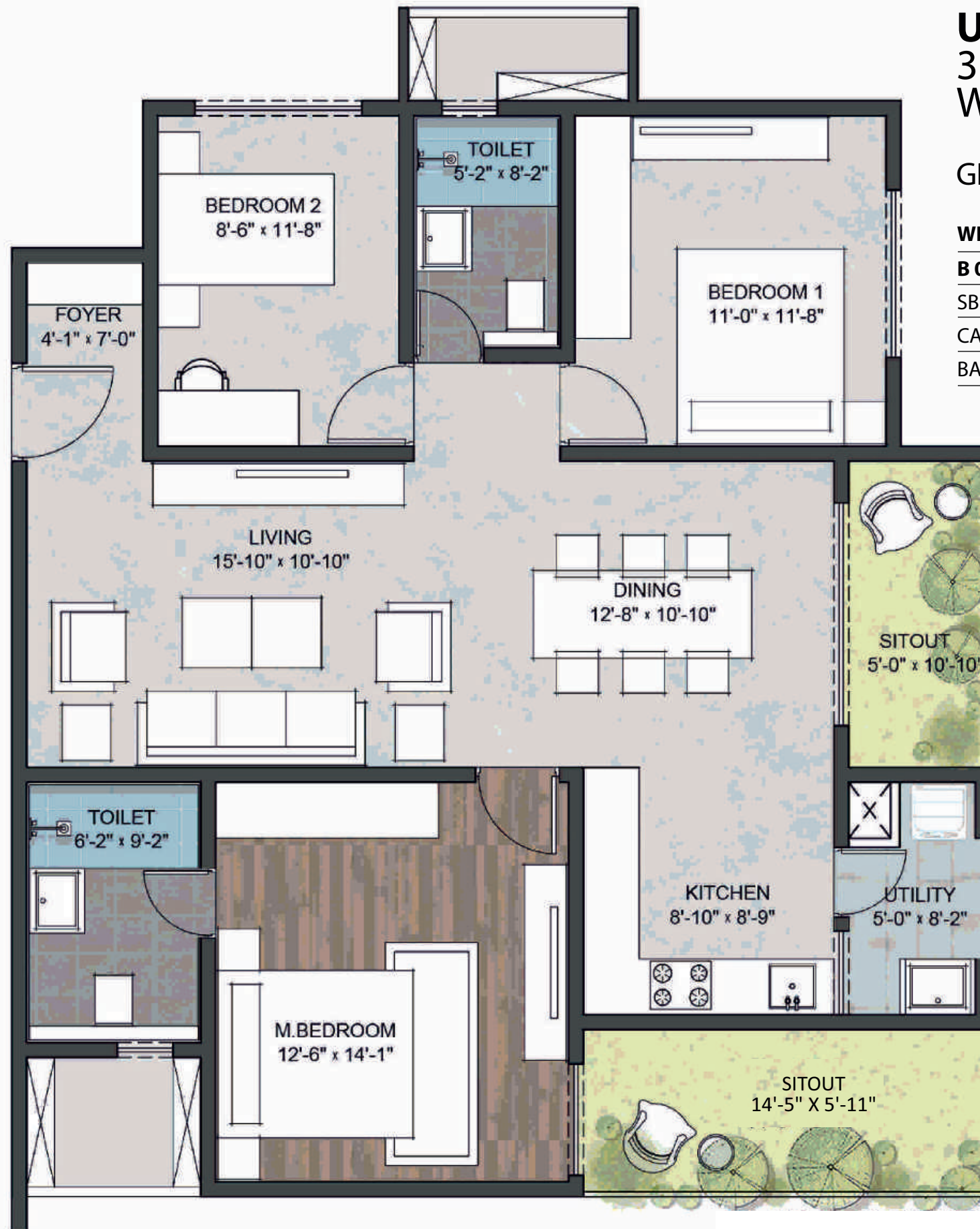
WING B

B 004

SBUA - 1700 SFT

CARPET AREA - 1022 SFT

BALCONY - 131 SFT



# UNIT 5 3 BHK SMART WEST

TYPICAL FLOOR

WING A, B

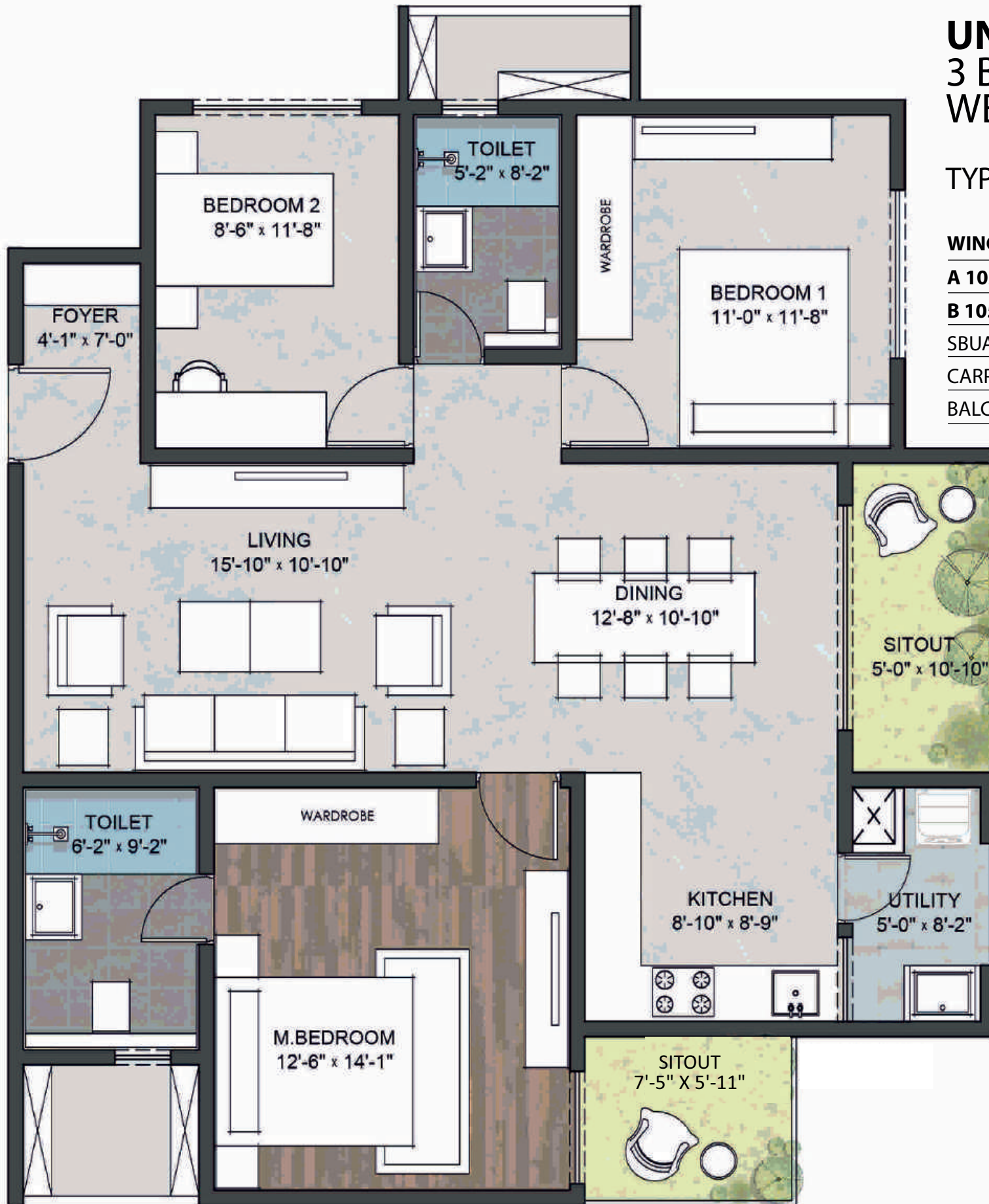
A 105 - A 1905, A 2105, A 2205

B 105 - B 1905, B 2105 - B 2205

SBUA - 1655 sft

CARPET AREA - 1022 sft

BALCONY - 91 sft



# UNIT 5 3 BHK SMART WEST

GROUND FLOOR

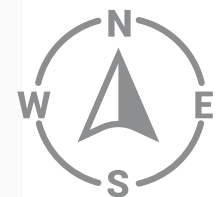
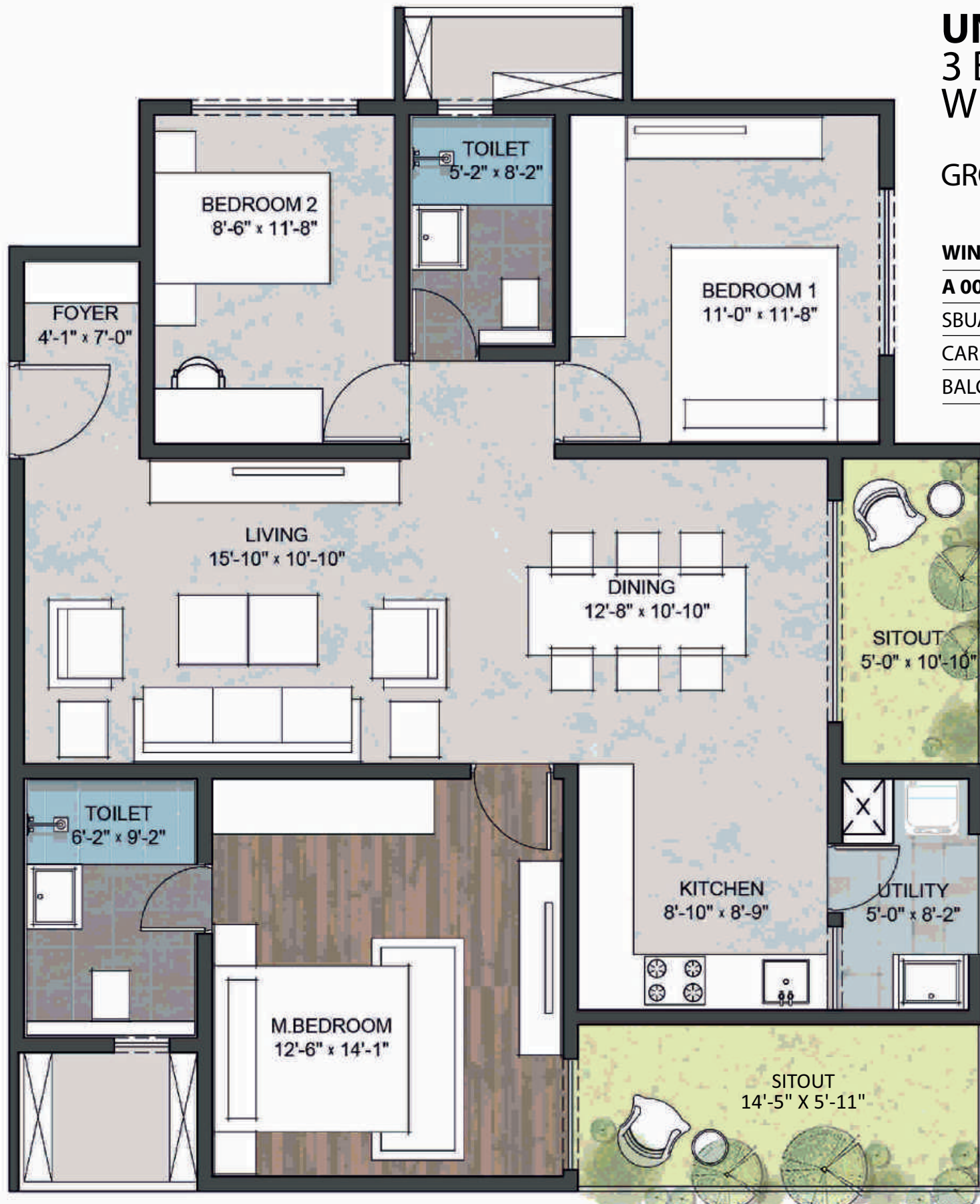
WING A, B

A 005, B 005

SBUA - 1700 SFT

CARPET AREA - 1022 SFT

BALCONY - 131 SFT



# UNIT 5 2 BHK SMART WEST

20TH FLOOR



**WING A , B**

**A 2005, B 2005**

SBUA - 1225 SFT

CARPET AREA - 770 SFT

BALCONY - 52 SFT



# UNIT 6 3 BHK CLASSIC WEST

GROUND AND  
TYPICAL FLOOR

WING A, B

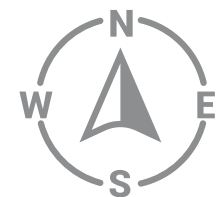
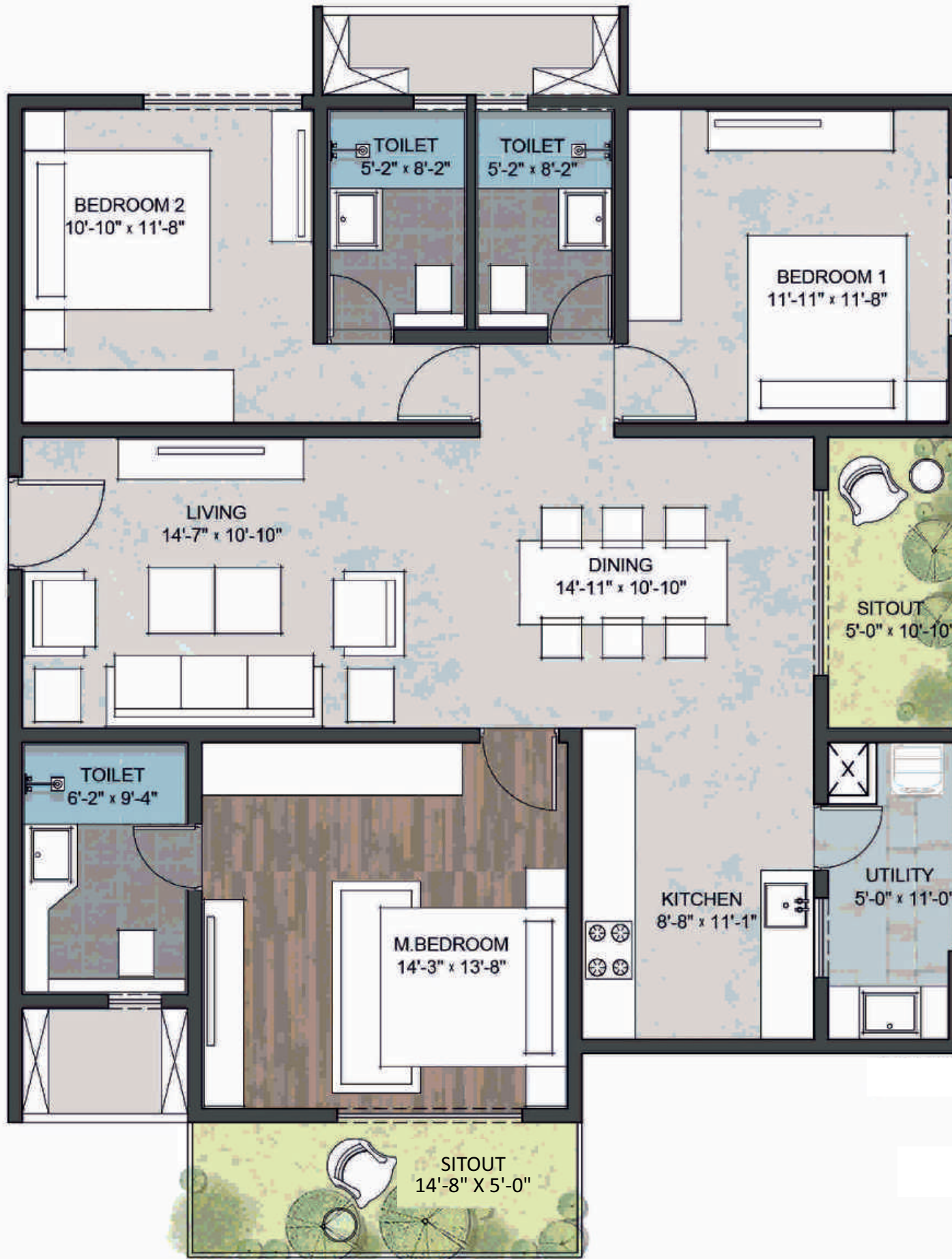
A006 - A2206

B006 - B2206

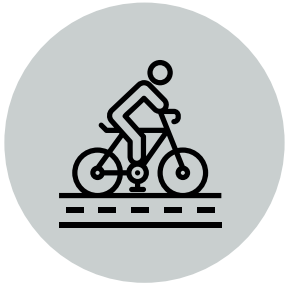
SBUA - 1870 sft

CARPET AREA - 1153 sft

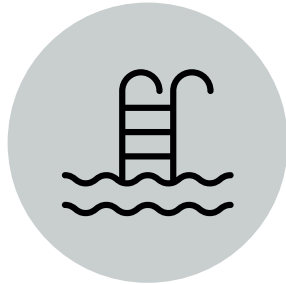
BALCONY - 117 sft



# AMENITIES



JOGGING / CYCLING  
TRACKS



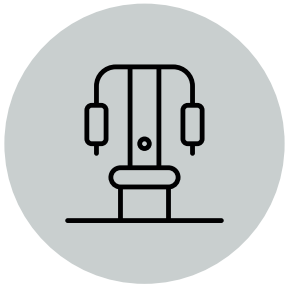
ADULTS SWIMMING  
POOL



JUNIORS SWIMMING  
POOL



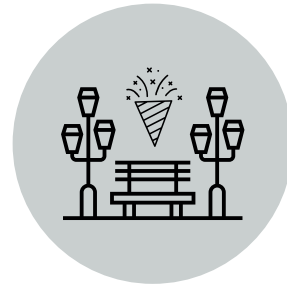
JACUZZI



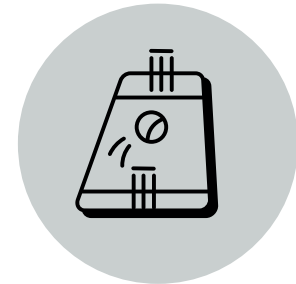
OUTDOOR GYM



AMPHITHEATER



PARTY LAWN



CRICKET PITCH



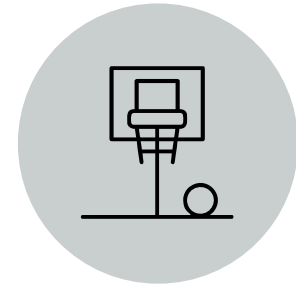
SKATING RINK



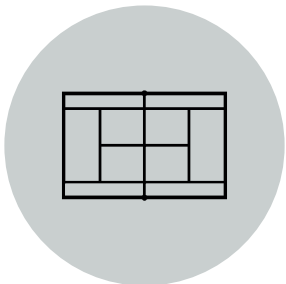
KIDS PLAY AREA



PET PARK



BASKETBALL  
COURT



TENNIS COURT



SENIOR CITIZEN'S  
COURT

Also, Badminton court, supermarket, creche, café, cross-fit, multipurpose hall, squash court, terrace garden, spa & salon, shower rooms, guest rooms, conference room, association office, co-working space, toilets and terrace garden.

NOT TO SCALE



TO AIRPORT



TO AIRPORT

BUDIGERE CROSS

8 Lane Express Highway

Old Madras Road

Towards Tir



HOODI JUNCTION

SHANTINIKETAN MALL

MANIPAL HOSPITAL

SIX SUMADHURA PROJECTS

ITPB

METRO STATION

SUMADHURA CAPITOL TOWERS

METRO STATION

WHITEFIELD RAILWAY STATION

CLOUD 9 HOSPITAL

VIVANTA

SUMADHURA LAKE BREEZE

HOPE FARM JUNCTION

SATHYA SAI HOSPITAL

SUMADHURA SHOHAM

FOLIUM BY SUMADHURA

SHERATON



ATAL BOTANICAL GARDEN

SUMADHURA SHIKARAM

# SPECIFICATIONS

## STRUCTURE

- Core wall and Shear wall monolithic construction with usage of best quality Aluminium Modular Shuttering System.

## DOORS

- Main door: Best quality teak wood frame of large 8 feet high with veneered flush shutter of 38 mm thickness, P.U polish finished on both sides.
- Internal doors: Engineered hard wood frame with veneered flush shutters of 38 mm thick, P.U polish finished on both sides.
- Toilet and utility doors: Engineered hard wood frame with veneered flush shutters of 38 mm thick, P.U. polish finish on one side and laminate finish on the other side.
- Balconies: UPVC French doors with sliding glass shutters and provision for mosquito mesh of Aluplast or equivalent brand/make.
- Windows: UPVC window systems with M.S. safety grill and provision for mosquito mesh of Aluplast or equivalent brand/ make. All Hardware of reputed make.

## FLOORING

- Elegant double height ground floor entrance lobby (in tower) & club house lounge area: Italian marble flooring.
- Staircases: Granite flooring.
- Corridor: GVT tile flooring
- Premium laminated wooden flooring in master bedroom.
- Living, dining, other bedrooms & kitchen are with 800x800mm size double charged vitrified tile flooring.
- Toilets: Satin finish ceramic tile flooring.
- All balconies/utilities: rustic finish ceramic tile flooring.
- Dadoing in kitchen: 300 x600mm
- Ceramic tiles dado of to 2' height above kitchen platform level.
- Toilets: 300 x 600 mm ceramic tile dado up to false-ceiling level.
- Utility: 300 x 600 mm ceramic tile dado up to 3'6" height.

## PAINTINGS

- External: textured/smooth finish with two coats of weather resistant exterior emulsion paint.
- Internal: smooth putty finish with two coats of premium emulsion paint for walls and acrylic emulsion paint for ceiling over one coat of primer.

## HAND RAILING

- Balcony: aluminium handrail with toughened glass railing.
- Staircase (common area): M.S. railing.

## KITCHEN/UTILITY

- Provision for softened water inlet in kitchen.
- Sleeve provision for chimney exhaust.
- Water inlet/outlet provision in utility area for washing machine.
- Water inlet/outlet provision in utility area for dish washer (for 4 BHK Smart and 4 BHK Grand only).

## TOILETS

- Toughened glass partition for shower in master bedroom toilet.
- Granite counter for wash basin with basin mixer.
- Wall mounted EWC with concealed flush tank.
- Single lever diverter cum shower.
- Sanitary ware: TOTO or Grohe or equivalent.
- In master bedroom toilet: vanity with premium C.P fittings of Grohe or equivalent make/brand.

## PLUMBING

- Water meter for individual flats (for softened water lines).
- Drainage/sewage: SWR/PVC pipes and fittings
- Water supply (Internal & External): CPVC or UPVC pipes and fittings.

## TELECOM/ INTERNET/ CABLE TV

- Provision for internet, DTH, telephone and intercom.

## ELECTRICAL

- Concealed copper wiring of Havells/ Polycab or Equivalent.
- Modular switches: Norysis/Schneider/ Legrand or equivalent make.
- Home automation switches in living room and master bedroom.
- Power socket for split air conditioners in all bedrooms. Provision of power socket for split air conditioners in living room.
- USB port for mobile phone charging in master bedroom.
- Power sockets in kitchen for Hob, chimney, refrigerator, microwave oven, mixer, Aquaguard and washing machine in utility area.
- Power sockets for geysers and Exhaust Fans in all bathrooms.
- Motion sensor based light control in toilets.
- Power supply for 4bhk Grand - 5Kw, 4bhk smart/3bhk classic- 4Kw and 3bhk Smart- 3Kw.
- DG backup for 4bhk Grand/4bhk smart - 1.5Kw, and 3bhk classic / 3bhk smart- 1Kw.
- 100% Un-Interrupted DG power backup for lifts, pumps & lighting in common areas.

## CAR PARKING

- Covered parking with entry/exit ramps and signages.
- Cement concrete flooring with power troweled smooth finish to increase the driving comfort.
- Dedicated space for car charging and car washing will be provided.

## FIRE & SAFETY

- Fire sprinkler system in all flats, corridor and basements.
- Fire hydrant and extinguishers in all floors.
- Fire alarms and Public address system.

## LPG

- Space provision for gas bank.

## MAID'S ROOM

- Flooring : 600 x 600mm vitrified tile.
- Door: Laminated flush shutter.
- Toilet: Floor mounted WC and C.P fittings of Jaguar/CERA or equivalent.

## COMMON AMENITIES AND FACILITIES OF THE PROJECT

### SECURITY

- Round-the-clock security system.
- Intercom facility to all apartments connecting to security room.
- Panic button and intercom is provided in the lifts.
- Solar powered fencing on the compound.
- Surveillance cameras at the main security and entrance of each wing.
- Video door phone.

### LIFTS

- High speed Lifts with auto rescue device & V3F for energy efficiency. Schindler or Equivalent make.
- In Wing 01, 02 & 03 - 03nos. of Eight passengers & 01no. of thirteen passenger in each wing and 01no. of thirteen passengers in clubhouse.

### ECO SUSTAINABLE FACILITIES

- WTP - Softened water made available through an exclusive water treatment plant (in case of bore water).
- Sewage treatment plant of adequate capacity as per norms will be provided inside the project, treated sewage water will be used for the landscaping / flushing purpose.
- Rain water harvesting tanks.
- Rainwater recharge wells.
- Organic waste converters.

### CLUB HOUSE AMENITIES

- **Ground floor** – Double height Reception lobby, Cafe, Multipurpose Hall, Pre-Function area, Spill Over, Toilets, Super Market, Creche, Swimming Pool with Deck, Shower Rooms for Male & Female.
- **First floor** – Badminton Court, Indoor Games, Spa & Salon, Yoga, Gym, Cross-fit, Squash court, Terrace garden.
- **Second floor** - Guest Rooms-04nos, Association Office, Conference room, Co-working, Toilets & Terrace garden

**ARCHITECT**

**ASURE DESIGN  
STUDIO**



4TH FLOOR, FLAT #401, APURUPA ONE  
BESIDE MADHAPUR POLICE STATION  
MADHAPUR

HYDERABAD 500081

[www.spacea.com](http://www.spacea.com)

**OUR  
PARTNERS**

**STRUCTURAL CONSULTANT**

**NADIG  
CONSULTING**



G-2, PRIDE ELITE #10, MUSEUM ROAD  
BANGALORE 560081

[WWW.NADIGCONSULTING.COM](http://WWW.NADIGCONSULTING.COM)

**PEER REVIEW OF  
STRUCTURAL DESIGN**

**NAGESH  
CONSULTANTS**

NAGESH CONSULTANTS, #2, 6TH CROSS, ASHOKNAGAR  
BSK 1 STAGE, BANGALORE 560050

**LANDSCAPE CONSULTANT**

**RRBUN SHAPES  
PVT. LTD.**



4TH FLOOR, FLAT NO. 231  
ROAD NO. 36, JUBILEE HILLS  
HYDERABAD

[INFO@RRBUN.COM](mailto:INFO@RRBUN.COM)

**MEP CONSULTANT**

**QDC INDIA  
CONSULTING(P) LTD.**



#62, PRAGATI MAHALAKSHMI  
BUILDING, 3RD FLOOR  
YASHANTHUR  
BANGALORE 560022

[WWW.QDCINDIA.COM](http://WWW.QDCINDIA.COM)

SY. 119, DODDABANAHALLI VILLAGE, BIDARAHALLI HOBLI, BENGALURU EAST, BENGALURU 560067

A PROJECT OF SUMADHURA INFRACON PRIVATE LIMITED, 108/2, MILLENIA BUILDING, 1ST MAIN, MSR LAYOUT OUTER RING ROAD, MARATHAHALLI, BENGALURU 560037