



# LOCATION PLAN



Dhasai, Shahapur - Kinhawali Road,  
Shahapur, Dist. Thane - 421 601.



• Entire Project Approved by  
Leading Banks





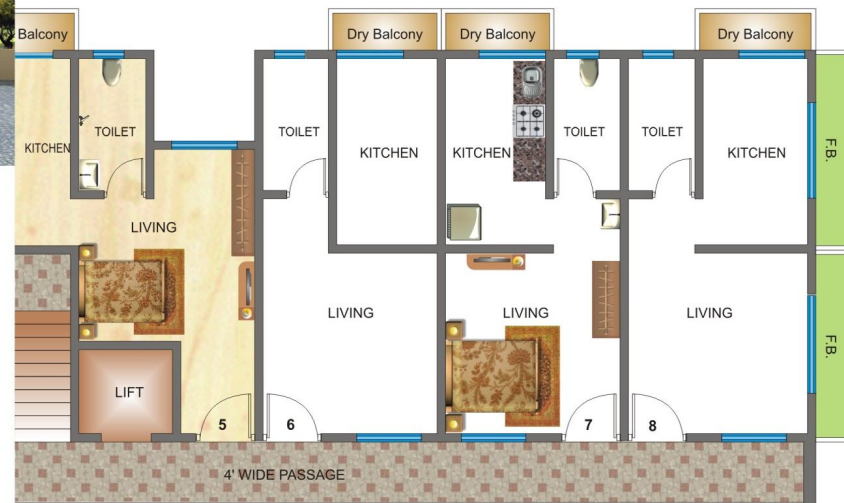


## *Entrance View*

**A lasting impression is achieved at introduction**

It is truly said that first impression is the last one. So for KARRM RESIDENCY we have rendered an impressive entrance that will allure for many years.

Every visitor of your will surely complement you for your impressive choice of KARRM RESIDENCY.







Shopping Mall

School with Junior College

Entrance



Typical Ground, 1st, 2nd, 3rd & 4th Floor Plan (2 BHK)







Typical Ground, 1st, 2nd, 3rd & 4th Floor Plan (1 BHK)



**A residency where everything resides**  
 Residential Apartments | Shopping Mall | Hospital | School | Playground with Garden | Acupressure Walking Zone | Shaded Parking | Club House with Swimming Pool & many more .....



## Internal Amenities

### LIVING ROOM

- Powder coated sliding aluminium windows
- Finished flush door for the main entrance
- Spartex flooring
- Fully finished internal plaster

### ELECTRICAL FITTINGS

- Sufficient points in all rooms
- Electrical switches of standard specification
- Concealed electrical wiring

### KITCHEN

- 1½ High dado tiles above kitchen
- Kaddappa Platform with stainless steel sink
- Spartex flooring
- Fully finished internal plaster

### LIFT

- Lift in all buildings
- Power back-up for common area

Typical Floor Plan 1st to 4th Floor  
(ONE ROOM KITCHEN)



## Clubhouse with Swimming Pool

### Club in to push your fatigue out

Every achiever deserves a place for recreation, a place where he can rejuvenate himself. Hence he deserves his own kingdom that is equipped with all the amenities he wishes. A table-tennis for agility, basketball for team-spirit or simply a game of cards to add some refreshment, and all these under one roof of 'KARRM RESIDENCY CLUBHOUSE'.





**KARRM**  
*Residency*

## *External Amenities*

- English medium school with junior college
- Hi-tech hospital
- Huge club house
- Swimming pool of 5000 sq. ft.
- Kindergarten
- 24 hours security
- 24 hours water supply
- In upcoming phase Engineering, Medical & Management college
- Entire project approval by leading bank
- Free bus service
- S. T. bus stop
- Inverter backup for lift
- Inverter backup for street light
- Inverter backup for common area
- In upcoming phase cinema hall
- Huge Market Place
- Compound wall for entire project
- Beautiful landscape main entrance
- Separate society office
- Library
- Pool side party lawn
- Electrical substation
- Milk centre
- ATM centre
- Sufficient car parking
- Shaded parking
- Open parking
- Sitouts for overflow dam view
- Free intercom service
- Herbal plant zone
- Huge wide roads for moving
- Theme fountains
- Ornamental garden
- Acupressure walking zone
- Nana-nani park
- Landscape garden
- Reserved parking for rickshaw and taxi stand
- Tree house
- Yoga and meditation kiosk
- Garbage tractors
- Street lights
- Earthquake resistant
- Rain water harvesting
- Fire fighting security
- Playcard room
- Indoor cricket
- Dart board
- Carrom board
- Chess board
- Basket ball
- Kids swimming zone
- Skating
- Fully equipped gym
- Kick boxing zone
- Table tennis
- Lawn Tennis
- Volley ball
- Snooker
- Cycling
- Sand pit
- Parking area at terrace
- Weather shed on terrace
- 100% leak proof
- Free loft
- Solar water heater
- Pest control for 2 years



*School*

### **School as you own it**

Education is meant to be life. It becomes better when you can enjoy it at school in your complex.  
The School at KARRM RESIDENCY is one of the elements that is dedicated to your child.  
So go ahead and build your child's life.

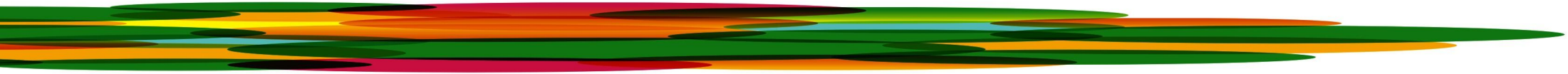
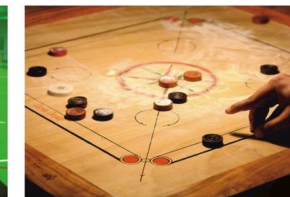




# Play Ground with Garden

A hint of entertainment for you

Entertainment is an undisputed rejuvenator. It is demanded by every soul.  
Hence KARRM RESIDENCY offers anytime entertainment for your kids with a Children Play Area.  
Go ahead and explore the artist in you.







## *Shopping Mall*

### **Business Grows Here, Extraordinarily**

KARRM RESIDENCY is building a large retail space that will match any international standards. Area has been assigned for a shopping experience that will bring in great charm and shopping at the door steps of the KARRM RESIDENCY dwellers.



## *Hospital*

### **New Era for Care & Cure**

The USP of the hospital will be its patient friendly design and ambience supported by 24x7 Emergency, Radiology and Imaging, Pathology, Diagnostics, Dialysis services with a Pharmacy and Blood Bank. Emphasis will be on Daycare Services and Lifestyle Management.





...n where happiness will find you }



## About Shahapur

...ic place & has pleasant climate with serene atmosphere.  
...lace for Mumbai people as the water supply to entire  
...a.

...her take a Maharashtra State Transport bus, that leads to  
...Kasara local train on central route of Mumbai suburban railway.

...me from the National Highway No.3.

...these train we can go to Shahapur.

...o reach Shahapur.

- ...rict
- ...eel Plant
- Manas Mandir
- Shikh Gurudwar (Asangaon)
- Four Dams : Tansa, Bhatsa, Vaitarna, Modak Sagar
- Good transport facility and connectivity
- It is midway between Mumbai and Nasik







cy



**KARRM**  
INFRASTRUCTURE PVT. LTD.

**HEAD OFFICE :**

1st Floor, Malhar Apt., Above Reliance Fresh,  
Near Malhar Cinema, Naupada, Thane (W) - 400 602.  
Tel.: 022 6198 9939 • 022 4113 0999 • 022 6139 8999  
E-mail : [infor@karrminfrastructure.com](mailto:infor@karrminfrastructure.com)  
We : [www.karminfrastructure.com](http://www.karminfrastructure.com)

**SITE OFFICE :**

At Post - Dhasai, Shahapur - Kinhawali Road,  
Shahapur, Dist. Thane - 421 601.

Disclaimer : The plans, specifications, images and other details herein are only indicative and the Developer/Owner reserves the right to change any or all of these in the interest of the development.  
This printed material does not constitute an offer and/or contract of any type between the Developer/Owner and the recipient. Any purchaser/lessee of this development shall be governed by  
the terms and conditions of the Agreement of Sale/Lease entered into between the parties and no details mentioned in this printed material shall in any way govern such transactions.

{ Discover A Nature's Home }

...with us,

**KARRM**  
INFRASTRUCTURE  
PVT. LTD.

About Us  
The company has completed  
construction of a large  
complex site in  
construction for  
of 13 years  
which launched in  
Shahapur,

A Project by  
**KARRM**  
INFRASTRUCTURE PVT. LTD.