



IF EVERYTHING
IS SO GOOD,
**WHY GO
ELSEWHERE!**



#OnceAgainAanaTohYahinHai



Artist's Impression

BE WHERE THE BEST IS.
**LIVE WHERE THE HAPPIEST
LIFESTYLE IS.**

First impression is the strongest and the longest one. A look at Rhythm County and you will be floored. A dynamic residential creation on a prolific location. A living concept that fosters togetherness. A bunch of 'Ready to Enjoy' amenities. These are just a few of the treats waiting to pamper you at Rhythm County. There's lots more. So, why go elsewhere, when you have such a rare opportunity at hand. Own your home at **Rhythm County**. Be where you rightfully deserve to be.

MAJESTIQUE
**RHYTHM
COUNTY**

2 & 3 BHK Homes

A SIGNATURE COLLECTION OF REFRESHING AMENITIES

LUXURY

- Swimming Pool
- Kids Pool
- Separate Designer Changing Rooms (Ladies & Gents)
- Designer Entrance Foyer
- Toddlers Zone
- Shrub Area
- Herbal Plantation
- Automatic Lift
- Power Back-up for Lift & Common Areas

OTHERS

- Designer Entrance Gate
- Senior Citizen Seating
- Solar Water Heater
- Paved and Landscaped Pathway
- Sewage Treatment and Water Saving Plant for Eco-Friendly Housing
- Rainwater Harvesting

RECREATION

- Multipurpose Hall
- Jogging Track
- Party Lawn
- Landscaped Entrance
- Amphitheatre
- Open-Air Activity Zone
- Meditation Zone
- Landscaped Garden
- Water Bodies
- State-of-the-Art Gymnasium
- Carrom Room
- Card Play Area
- Gazebo
- Yoga and Aerobics Area

SPORTS

- Children Play Area
- Skating Rink
- Tennis Court
- Volleyball Court



Open-Air Activity Zone



Indoor Games



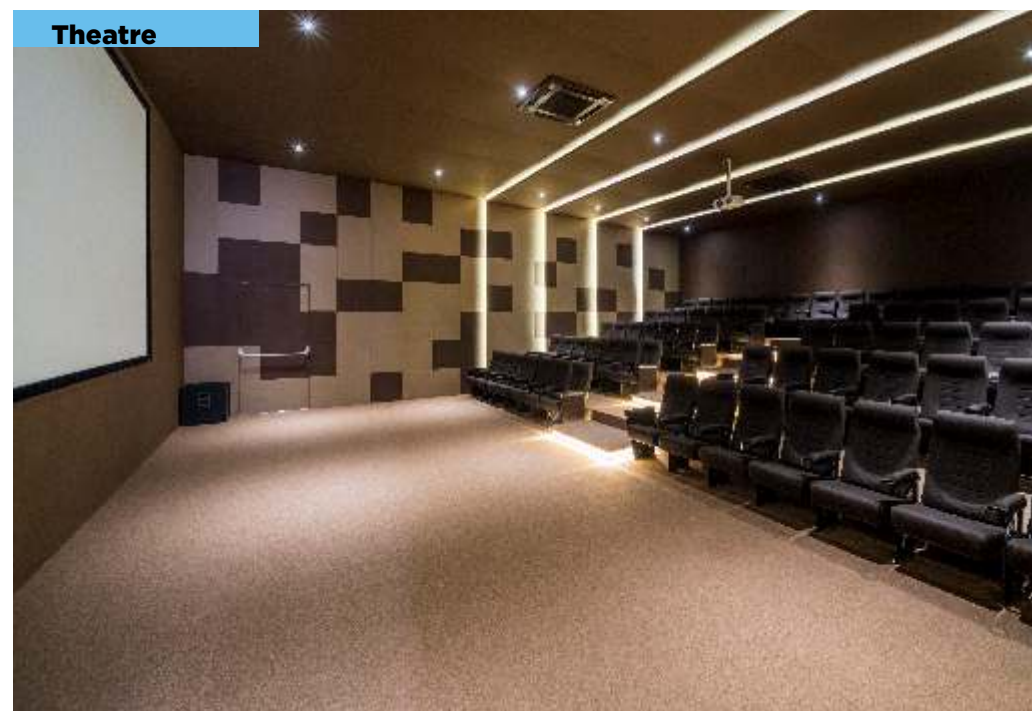
Clubhouse



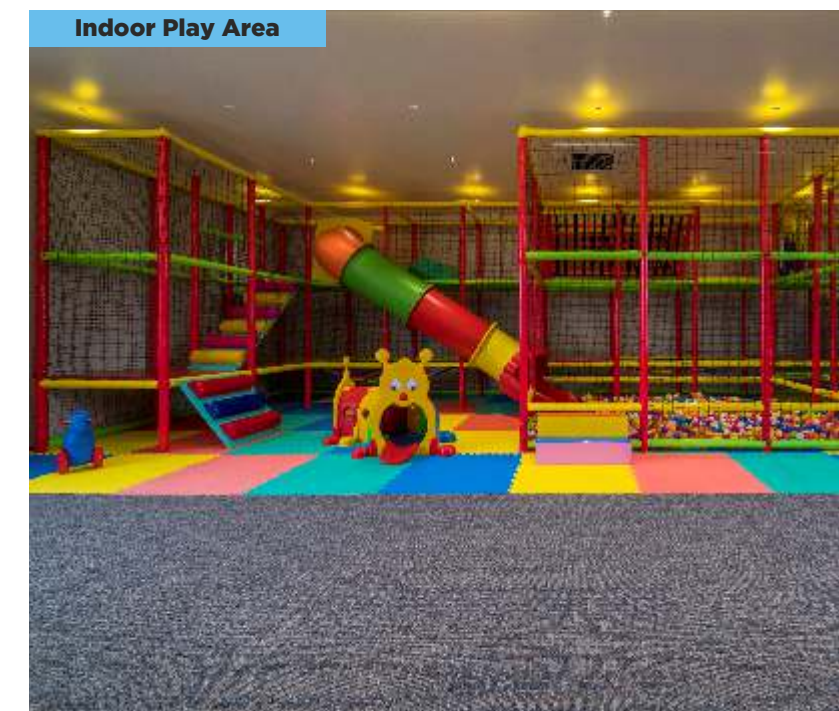
Swimming Pool & Kids Pool



Children's Play Area



Theatre



Indoor Play Area

THE FINEST SPECIFICATIONS OF REPUTED BRANDS



KITCHEN

- Granite Kitchen Platform
- Stainless Steel Sink and Dado up to 2 Feet Level
- Provision for Exhaust Fan in Kitchen



BATHROOM

- Jaquar or Equivalent CP Fittings
- Cera or Equivalent Sanitary Fittings
- Provision for Exhaust Fan in Each Toilet
- Designer Tiles up to Lintel Level in All Toilets and 4 Feet in WC
- Table-Top Wash Basin



FLOORING AND WALL FINISH

- 2x2 Vitrified Flooring for Entire Flat
- Anti-Skid Tiles in All Attached Terraces and Balconies
- OBD Paint (Oil Bond Distemper)



DOORS

- Decorative Main and Internal Doors with Wooden Door Frame
- SS Finish Fittings for All Doors
- Cylindrical Lock for Internal Doors



WINDOWS

- Powder-Coated Sliding Windows
- MS Railing and Grill for Safety and Security
- Granite Window Sill for Windows and Bathroom Door Frames



ELECTRICAL

- Concealed Copper Wiring - Polycab or Equivalent
- Switch, Sockets and DBs - Legrand or Equivalent
- Generator Back-up for Common Lighting



ELEVATORS

- Automatic Passenger Elevators
- Power Back-up for all Elevators



ENTRANCE LOBBY

- Secured Entrance Lobby
- Royal Entrance Lobby
- Waiting Lounge



PERIPHERAL ROADS

- Well-Illuminated Internal Concrete Road with Pavers



GARDEN AND LANDSCAPING

- Professionally Designed Garden and Landscaping
- Children Play Park with Premium Quality Equipment



SECURITY

- 24 Hour Security
- CCTV Camera

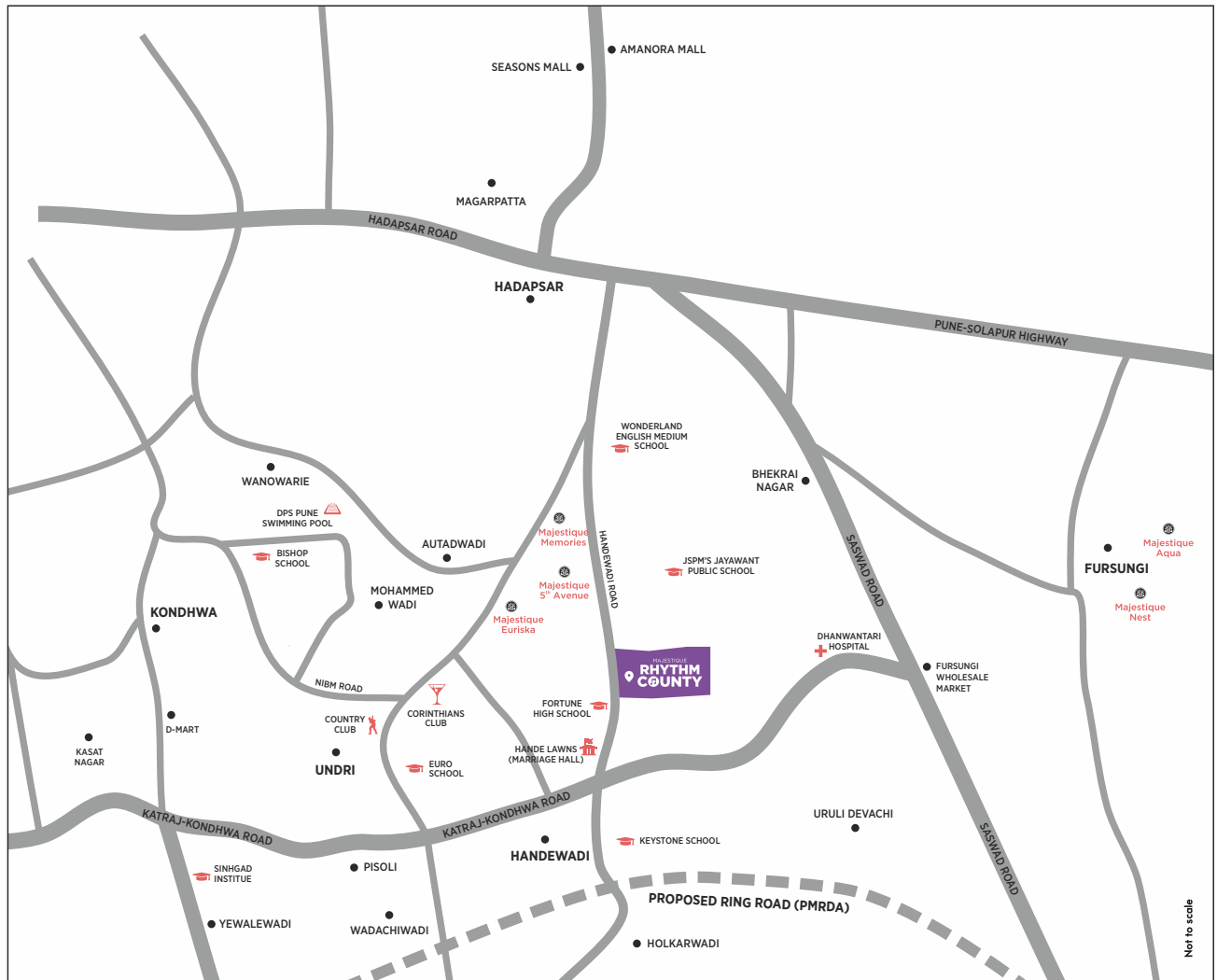
2 BHK



3 BHK



JUST THE PERFECT SETTING FOR A PRIME LIVING



Location key highlights:

- Amanora Mall - 24 mins.
- Seasons Mall - 22 mins.
- Royal Heritage Mall (Dorabjee's) - 16 mins.
- Noble Hospital - 19 mins.
- Sahyadri Hospital, Hadapsar - 44 mins.



Site Address: Sr. No. 10P/11P, Autade, Hadapsar-Handewadi Road, Pune - 411028.

Call: **866 999 6664** | www.majestiqueproperties.com

MahaERA Registration No. P52100027794, <http://maharera.mahaonline.gov.in>

Disclaimer: The images shown are an artist's impression and are for representation purpose only and should not be construed as a promise made by the developer for amenities in the building/apartment. The delivery of the product will be as per the mutually agreed list of amenities which will be finalized with the purchaser individually and mentioned in the agreement.