

PURVA
SOMERSET
HOUSE

A SIGNATURE WORLD

PURAVANKARA®



WORLDHOME
COLLECTION

WorldHome Collection is a holistic perspective to life-spaces that strives to provide conducive, healthy, smart and luxurious living experiences under a unique brand name. Envisioned by industry stalwarts, the idea is to provide an ecosystem where design, nature, technology along with luxuries inspired from the world over, are curated with utmost care and passion.

Here is an experience where life cherishes every moment submerged in the finest of luxuries. Adding to this evolving lifestyle is a name of trust, Puravankara that has a proven track record of delivering quality lifestyle for more than 4 decades. When experiences from across the world come home, it becomes a true WorldHome.

IT'S TIME TO
EXPERIENCE AND EVOLVE

ENVISAGING THE HOMES OF THE FUTURE

6 TENETS THAT MAKE IT A WORLDHOME



PARTNERING WITH THE BEST

Internationally acclaimed architects, interior designers, landscape planners and globally recognized brands come together to make a masterpiece called WorldHome.



INTEGRATED PLANNING

Created with an integrated planning process where health, wellness, technology and lifestyle are built as an essential part of your life.



SUSTAINABLE AND ENVIRONMENTALLY CONSCIOUS

Striking a balance with nature is of prime importance to every WorldHome project to ensure that spaces are built to provide a healthy & thriving environment including sustainable practices.



EXPERIENCES BEYOND AMENITIES

Every amenity is planned and designed with utmost passion and unwavering attention to detail to elevate your living experience.



TECHNOLOGY TO ENABLE SMART LIVING

Powered by the cutting edge BluNex Technology, your home can respond to your voice and touch, taking smart-living to the next level of comfort and sophistication.



ELITE-LUXURY AND CRAFTSMANSHIP

Luxury is a matter of superior choice that reflects in every aspect of your WorldHome. Right from grand entrances to a handpicked choice of fittings and flooring, every corner reflects exclusivity and impeccable craftsmanship.



CHENNAI'S FIRST-EVER
SIGNATURE WORLDHOME
RESIDENCES WITH
EXPERIENCES FROM
AROUND THE WORLD



PURVA SOMERSET HOUSE

Own your signature luxury residence in Chennai's most sought after address. Purva Somerset House enjoys being at one of the most sought after locations in the country, and is the first WorldHome Collection project in Chennai bringing the best from the world to your doorstep. It's time to make your mark of arrival.

「WHEN GREAT
THINGS COME
TOGETHER,
A SIGNATURE
LIFESTYLE
IS BORN.」

THE TRUST OF PURAVANKARA



45+ YEARS OF TRUST

AN UNPARALLELED LOCATION



GUINDY,
THE HEART OF CHENNAI

A NOTEWORTHY ARCHITECT



HADI TEHERANI,
GERMAN ARCHITECT

A WORLDLY DESIGN



ANDY FISHER WORKSHOP
SINGAPORE

A UNIQUE HOME ENABLED WITH TECHNOLOGY



BLUNEX LIFE – AN INTELLIGENT,
INTEGRATED LIVING EXPERIENCE

PURAVANKARA®

INDIA'S MOST TRUSTED DEVELOPER

NOW HAS A CROWN JEWEL,
PURVA SOMERSET HOUSE.

With over 45 years of experience in real estate, Puravankara is today amongst the top 4 developers in India.

A credo of uncompromising values, customer centricity, robust engineering, and transparent business operations, has earned Puravankara many accolades from customers and the public at large. Puravankara is also popular for it's unique conceptualizing sensibilities, and has won the trust of over 23,000 happy customers.



NOTHING LESS THAN THE BEST WOULD SUFFICE

HADI TEHERANI THE MASTER AND A MASTERPIECE

Conceptualized by the globally renowned German architect Hadi Teherani, the facade of Purva Somerset House has been designed to create an international and timeless architectural statement taking inspiration from traditional design elements of Tamil Nadu and global design trends creating a unique work of art.

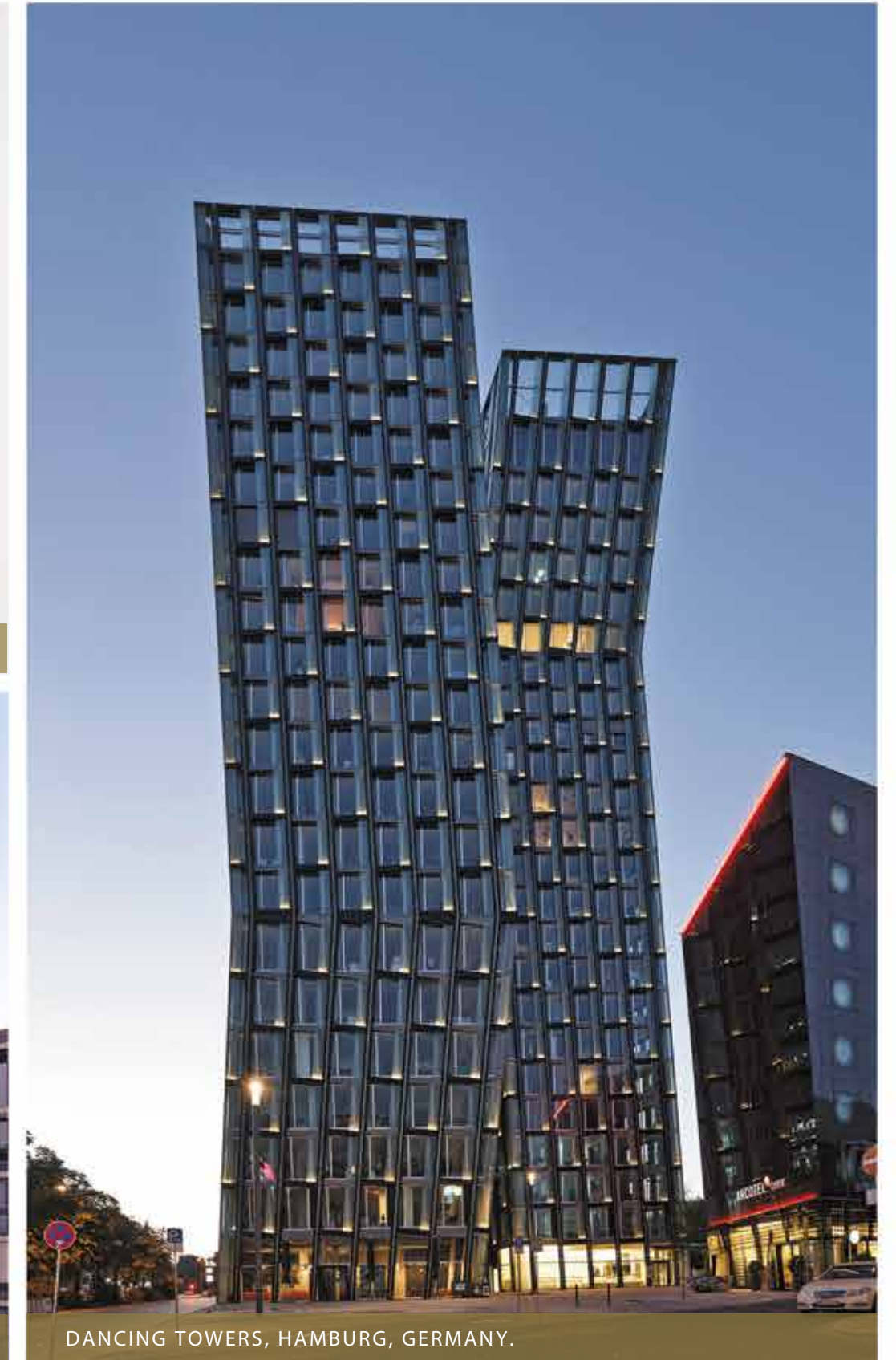
It is inspired by the geometry of intricate patterns of the traditional handmade Chettinad tiles which have been reimagined and translated into modern jaali patterns and cladding design elements, thereby giving it a strong character rooted in rich heritage. An address that will be a magical mélange of culture and sophistication.



AR. HADI TEHERANI



KRANHAUS, COLOGNE, GERMANY.



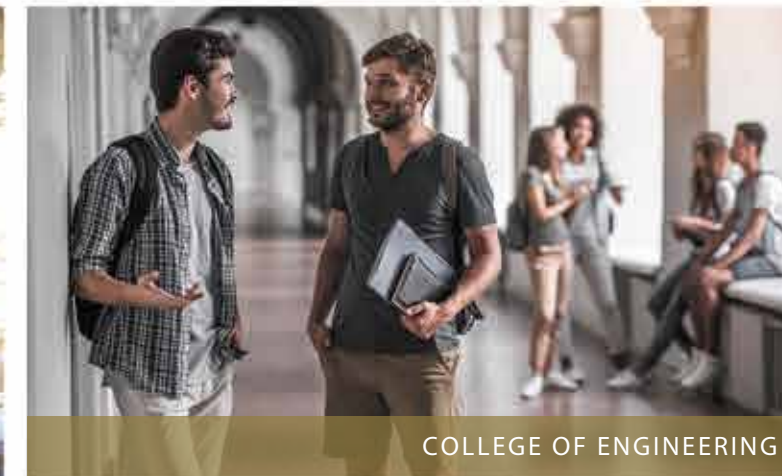
DANCING TOWERS, HAMBURG, GERMANY.



GUINDY NATIONAL PARK



GUINDY RAILWAY STATION



COLLEGE OF ENGINEERING



KATHIPARA JUNCTION

WHERE THE LOCATION IS AS PRECIOUS AS GOLD

Guindy in Chennai, is one of the 10 most prime investment destinations in India. Overlooking the Racecourse, and situated near the National Park, Purva Somerset House keeps you close to beautiful forests, and a wide variety of flora and fauna and is yet in close proximity to city centers like Velachery, the metro station, the airport, IT Parks, malls, educational institutions, hotels and hospitals.

THE BEST LOCALITIES GET BUILT AROUND THE RACECOURSE

Historically, the best locations in the world are developed around a Racecourse due to easy connectivity, upmarket lifestyle and a unique mix of commercial and residential development. The pride of place and the paucity of a residence there are some advantages one can always command being next to a Racecourse.

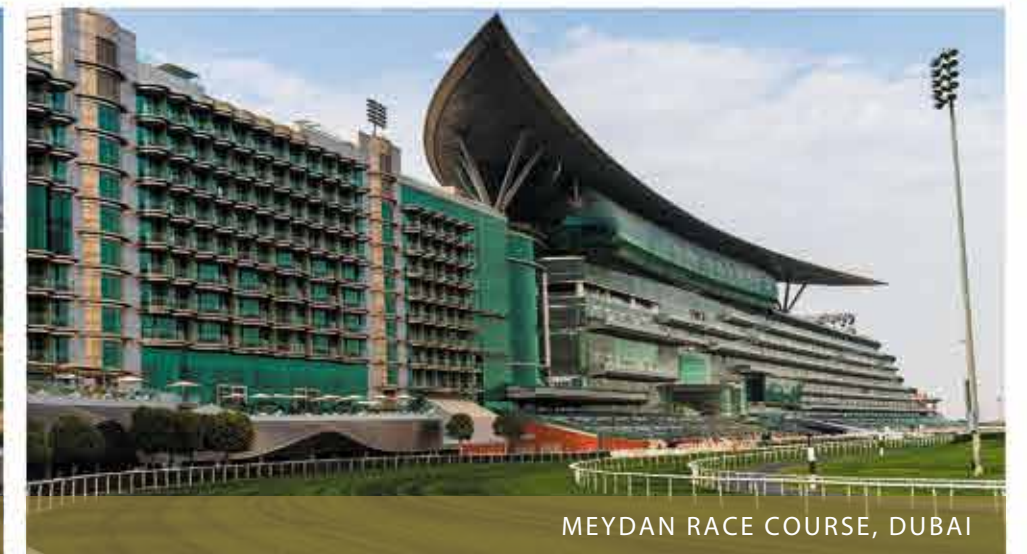
Purva Somerset House around the Guindy Race Course, is one of the most coveted locations in the city. It is also the oldest racecourse in India and boasts of the best racetrack in the country. The sheer majestic views that this unique aesthetic backdrop offers, is something only a select few have the privilege of waking up to.



HAPPY VALLEY, HONG KONG



MAHALAXMI RACE COURSE, MUMBAI



MEYDAN RACE COURSE, DUBAI

「
GLANCE AT THE GALLOPS
AND EQUESTRIAN
ANECDOTES FROM
THE COMFORT
OF YOUR TERRACE
」





YOUR LUNG SPACE,
RIGHT IN THE HEART
OF THE CITY.

LOCATION PROXIMITY TO KEY AREAS:

Kathipara Junction - 2 kms	Phoenix Market City - 2 kms
Guindy National Park - 3 kms	Raj Bhavan - 3 kms
IT Corridor, OMR - 5 kms	IIT Chennai - 4 kms
Guindy Metro Station - 1 km	Adyar - 5 kms
Apollo Hospital, OMR - 6 kms	Airport - 8 kms

IT PARKS (WITHIN 5-6 KM RADIUS):

TIDEL & Ramanujan Tech Park	DLF SEZ
Olympia Tech Park	Ascendas Tech Park

BLUNEX LIFE: TOMORROW'S TECHNOLOGY TODAY.

Introducing BluNex Life, the next generation of intelligent homes.

Put together by some of the best technical talent in the country,

BluNex uses Artificial Intelligence solutions and Internet of Things

(IoT) to transform the way you live.

With a fine blend of cutting-edge technology and easy-to-use

innovations, your smart home welcomes you to step into the future.

BluNex Life

with hands-free assistance from

Google Home



INTELLIGENT HOME CONTROLS
BY VOICE & BLUNEX LIFE APP



24X7 CONNECTIVITY TO YOUR HOME
FROM ANY PART OF THE WORLD

Photographs of interiors, surrounding or location are digitally enhanced unless otherwise mentioned. No photos have been shot on site. The user interface on the BluNex app and on other home automation devices including the Google Home may change with time. BluNex Life come with Google Home Device. Please refer to the terms, conditions and relevant disclaimers pertaining to the BluNex Life Package in the specifications document. Requires Wi-Fi, a nearby electrical output and compatible devices.



EMBRACE HOMES REplete WITH FUTURISTIC COMFORTS

- Mobile App Enabled Home Automation
- High-Tech Main Door Security System
- Biometric Main Door Lock
- Multiple Lighting & Cooling Settings
- Voice Enabled Help
- Hands free Music Device
- Google Chrome Cast
- Hands Free Master Switch
- Pre-programmed Morning Settings
- Automated Security Features
- Wi-Fi Boosters, Intelligent Curtain Control, Gas Detector, Sensor Lights in Foyer Area

Photographs of interiors, surrounding or location are digitally enhanced unless otherwise mentioned. No photos have been shot on site. The user interface on the BluNex app and on other home automation devices including the Google Home may change with time. BluNex Life come with Google Home Device. Please refer to the terms, conditions and relevant disclaimers pertaining to the BluNex Life Package in the specifications document. Requires Wi-Fi, a nearby electrical output and compatible devices.

THE ADDRESS OF LIFE'S PUREST SECRET

Gone are the days when you need to put up a water purifier. We have proficiently brought together two state-of-the-art technologies - UF and UV to ensure you consume the cleanest water right off the kitchen tap. Processed through a centralised treatment plant, the water is filtered multiple times with sediment filters, activated carbon filters and membrane filters, and stored in a stainless steel tank, so you enjoy the purest access to high quality drinking water.



Photographs of interiors, surrounding or location are digitally enhanced unless otherwise mentioned. No photos have been shot on site. Users will need to be aware that water may get contaminated even after its output from the tap by way of human contact, contaminated holding vessels, etc. The filtration mechanism that is common to the entire building also needs periodic maintenance / replacement by the Association of Owners, as per the manufacturers user manual, failing which the water quality shall deteriorate.



THE TRIO THAT DELIVERS YOU THE SECRET OF HEALTHY LIVING



WATER HARVESTING:

The process begins with rainwater harvesting in perfectly-built storage tanks then functionally using it for domestic use. The next step of this module is recharging groundwater by directing excess water in & thereby recharging the groundwater level.



WATER PURIFICATION:

Off the kitchen tap pure drinking water saves more space in the kitchen & opens up space for your experimental cooking. The state-of-the-art technologies assure the purity of water, irrespective of its source of origin and the mode of supply.



WATER RECYCLING:

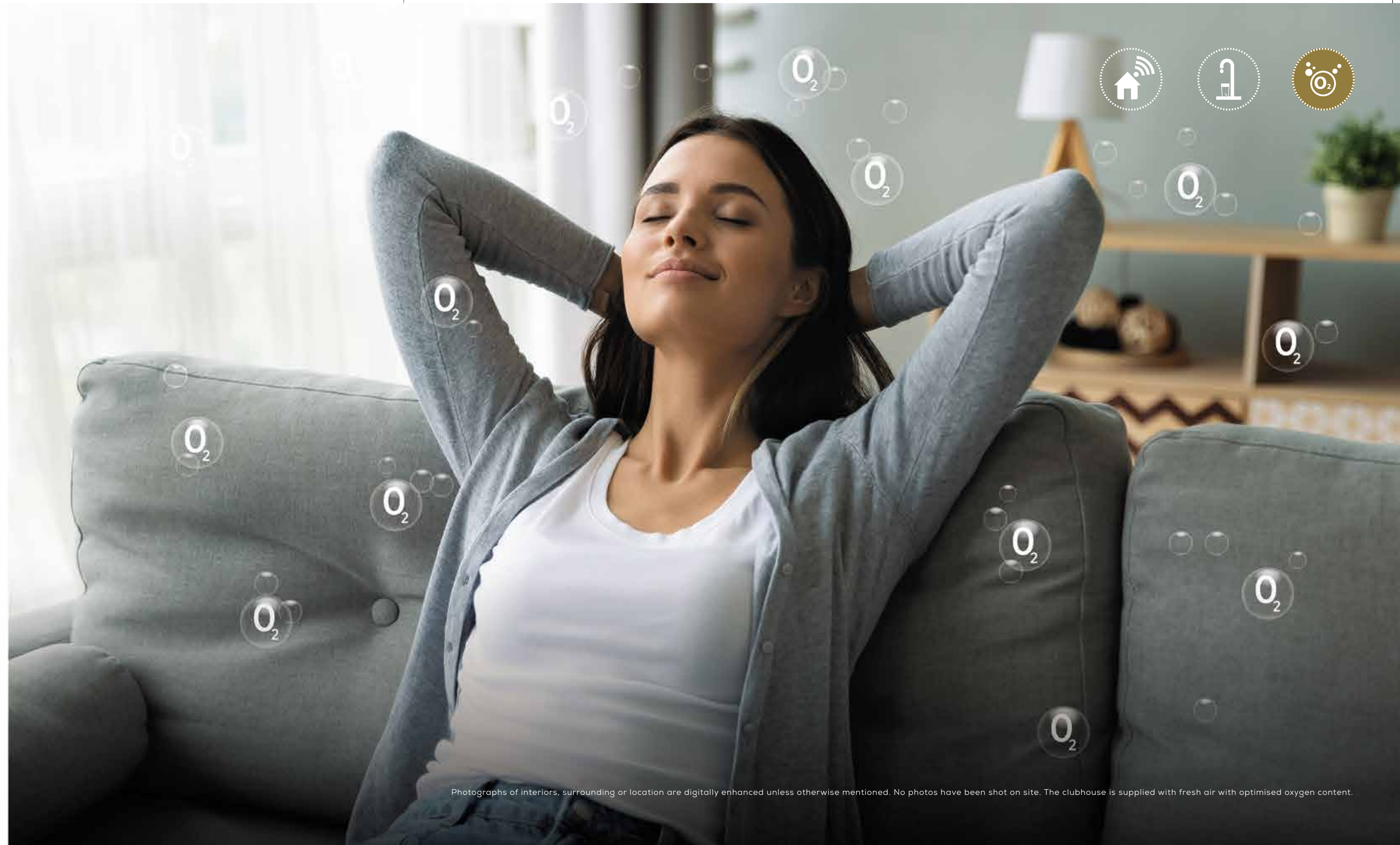
The Sewage Treatment Plants treat all types of wastewater with an all-new MBR Technology. Adhering to the principle of minimum waste, this treated water is then used for the chores like flushing, gardening, etc.

Photographs of interiors, surrounding or location are digitally enhanced unless otherwise mentioned. No photos have been shot on site. Users will need to be aware that water may get contaminated even after its output from the tap by way of human contact, contaminated holding vessels, etc. The filtration mechanism that is common to the entire building also needs periodic maintenance / replacement by the Association of Owners, as per the manufacturers user manual, failing which the water quality shall deteriorate.

THE ADDRESS OF OXYGENATED LUXURY

Air that's rich with oxygen offers many health benefits including relaxed mental & physical health for your overall well-being.

At Purva Somerset House, this is exactly why we supply a fresh dose of oxygen at regular intervals at your clubhouse. Visit the oxygenated clubhouse and feel rejuvenated.



Photographs of interiors, surrounding or location are digitally enhanced unless otherwise mentioned. No photos have been shot on site. The clubhouse is supplied with fresh air with optimised oxygen content.



Photographs of interiors, surrounding or location are digitally enhanced unless otherwise mentioned. No photos have been shot on site.

THE ASCOT LOUNGE

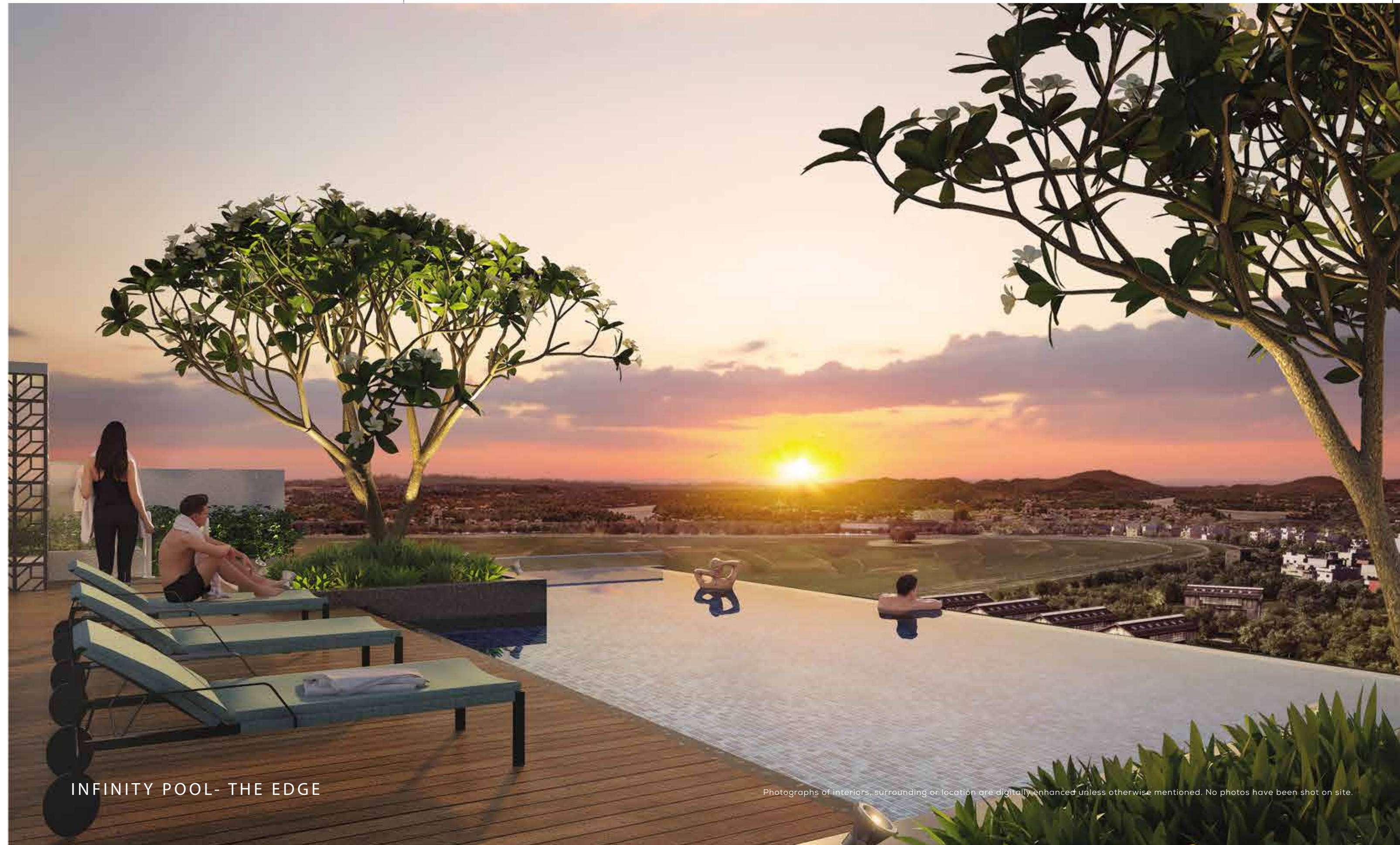
EXOTIC EXPERIENCE AT THE 12TH FLOOR.

EXCLUSIVELY DESIGNED BY SINGAPORE-BASED
WORLD-RENOWNED DESIGNER- WITH, ANDY FISHER.

Every amenity is designed keeping in mind the experience that it will deliver and thus planned with utmost care and perfection. The curated leasures spread across the 12th floor manifest the perfect blend of luxury and technology, making it a masterpiece.

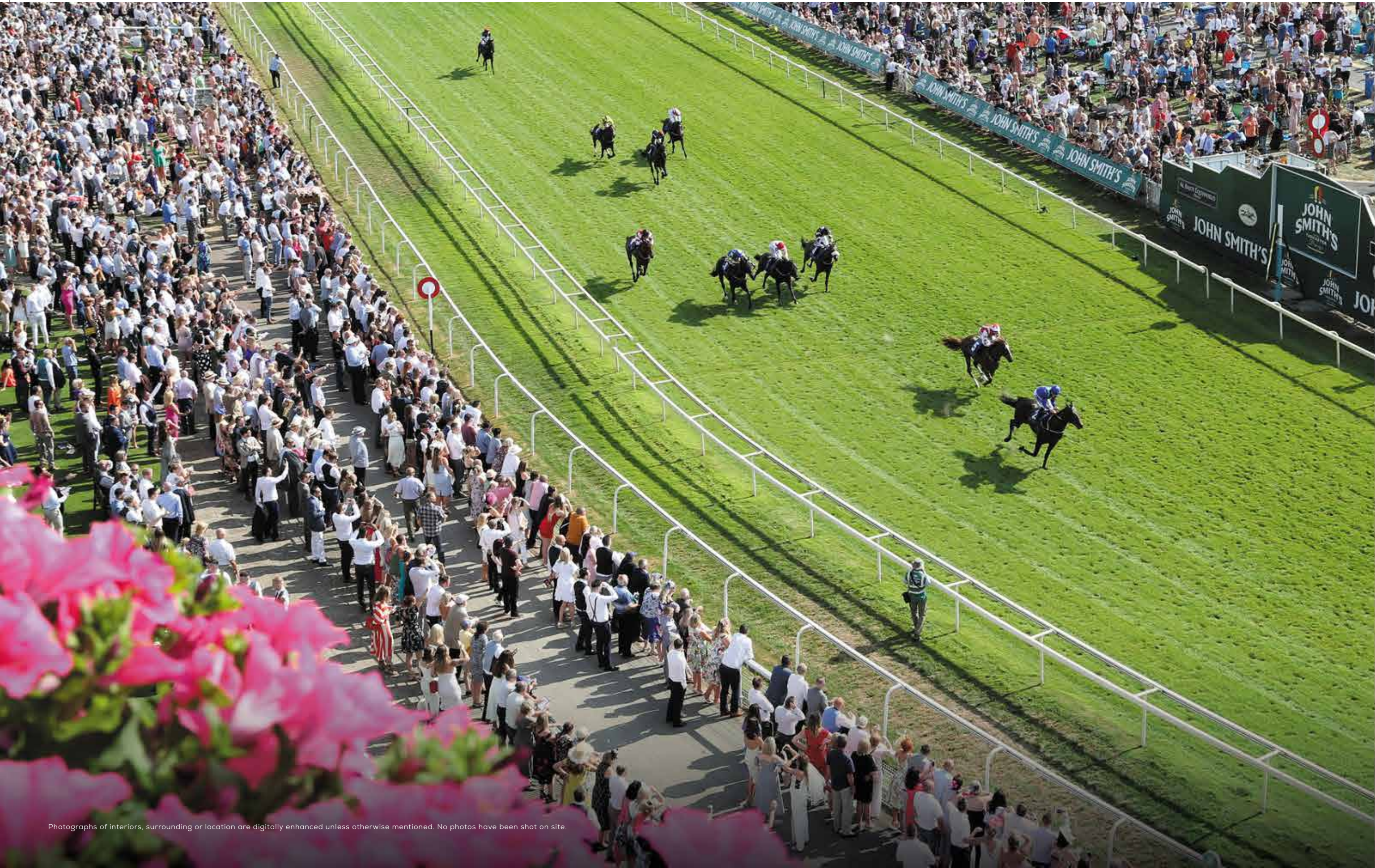
Andy Fisher workshop

「LUXURIES TO INDULGE IN,
MOMENTS TO SOAK IN.」



INFINITY POOL- THE EDGE

Photographs of interiors, surrounding or location are digitally enhanced unless otherwise mentioned. No photos have been shot on site.



CHENNAI'S
ONE OF ITS KIND
ROYAL RACECOURSE
VIEWING BOX



INSPIRED BY BRITISH STATELY HOMES - THE WALLED GARDEN



INSPIRED BY BARCELONA'S ROOFTOPS - THE GALLERY



INSPIRED BY FRENCH LAVENDER FIELDS - THE FRAGRANT GARDEN



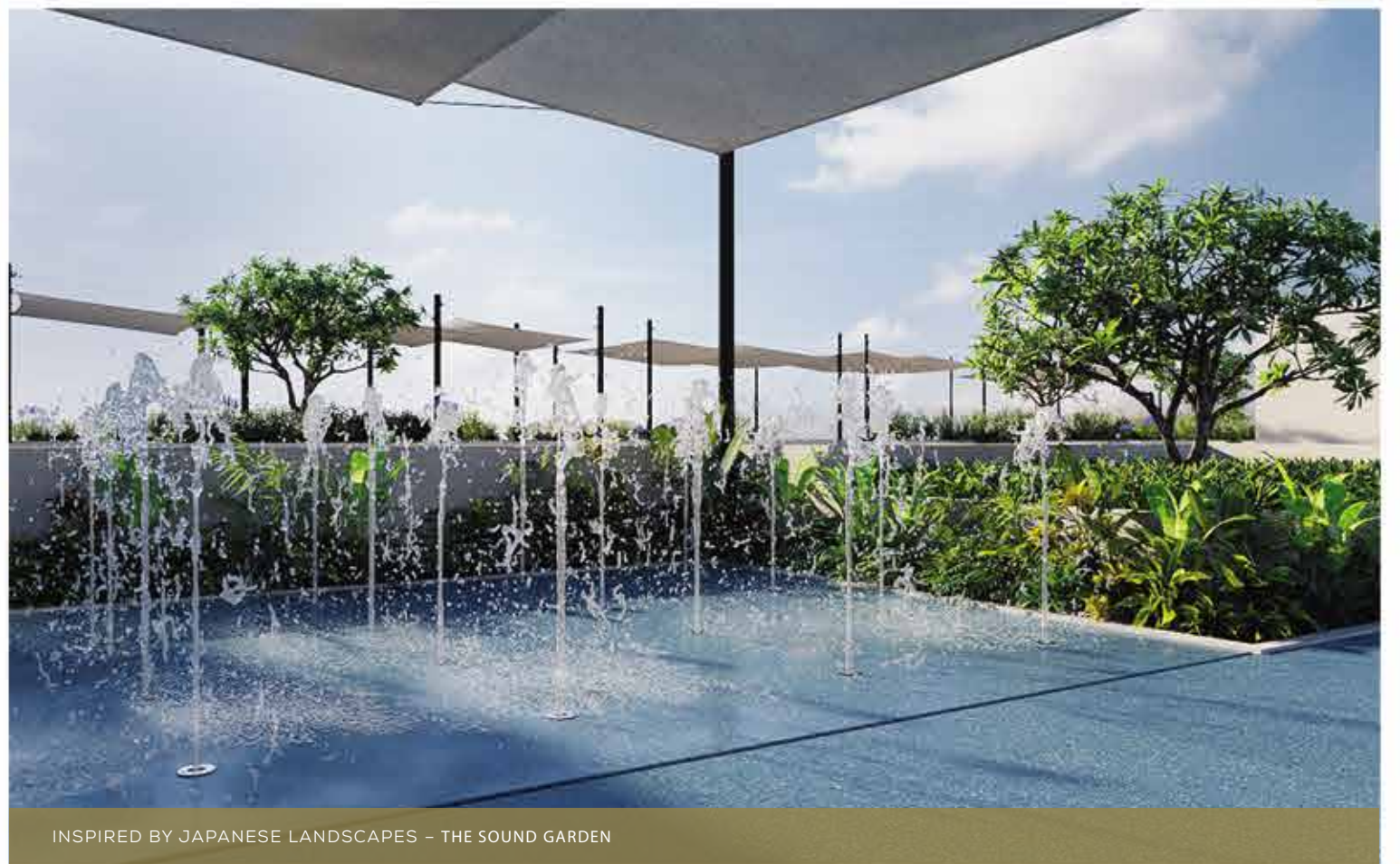
INSPIRED BY LONDON'S THIRD SPACE GYM - THE FIFTH SPACE



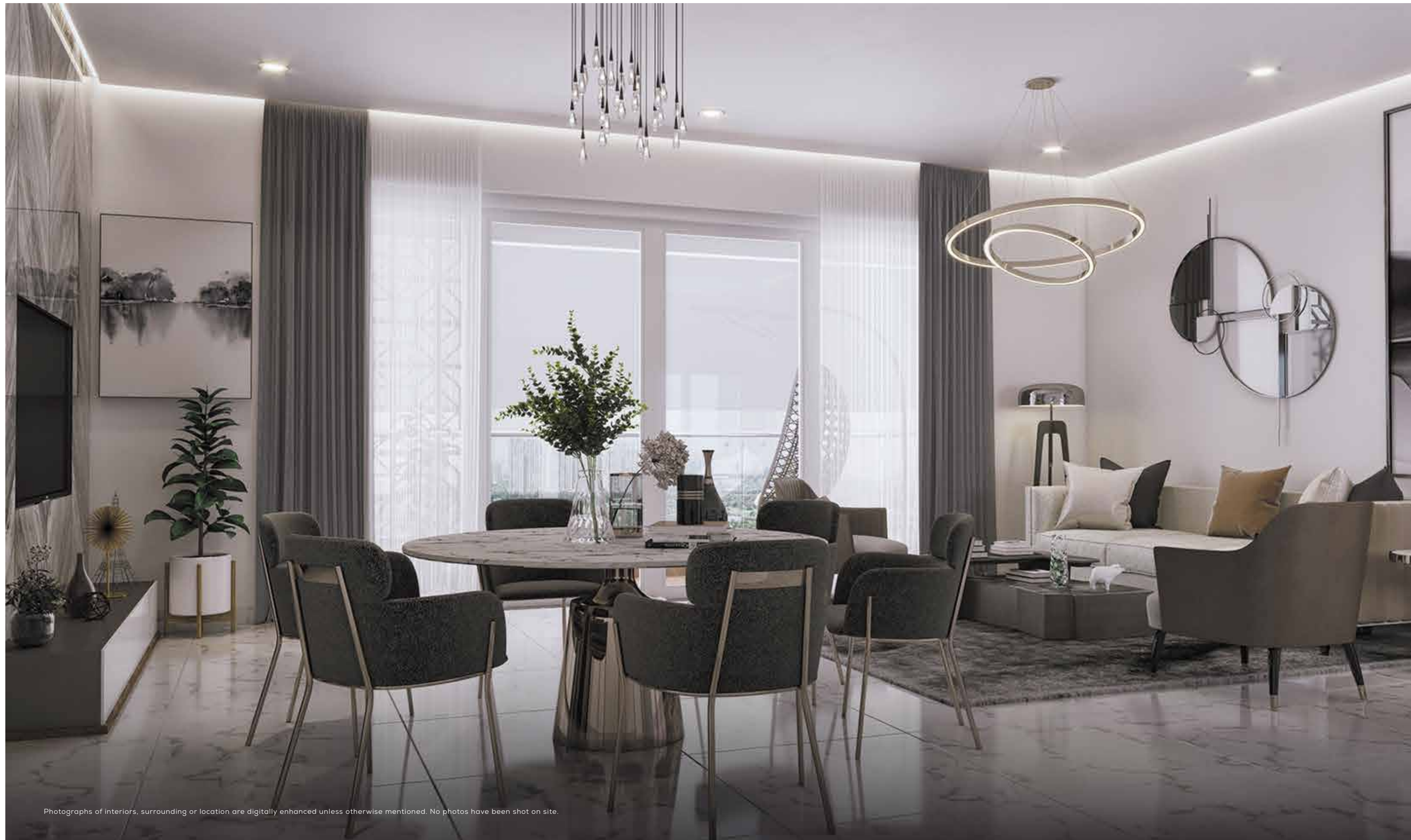
INSPIRED BY DENMARK'S THE PULSE PARK - PULSE



INTERNATIONAL COOKING STATION - EQUESTRIAN WALK



INSPIRED BY JAPANESE LANDSCAPES - THE SOUND GARDEN

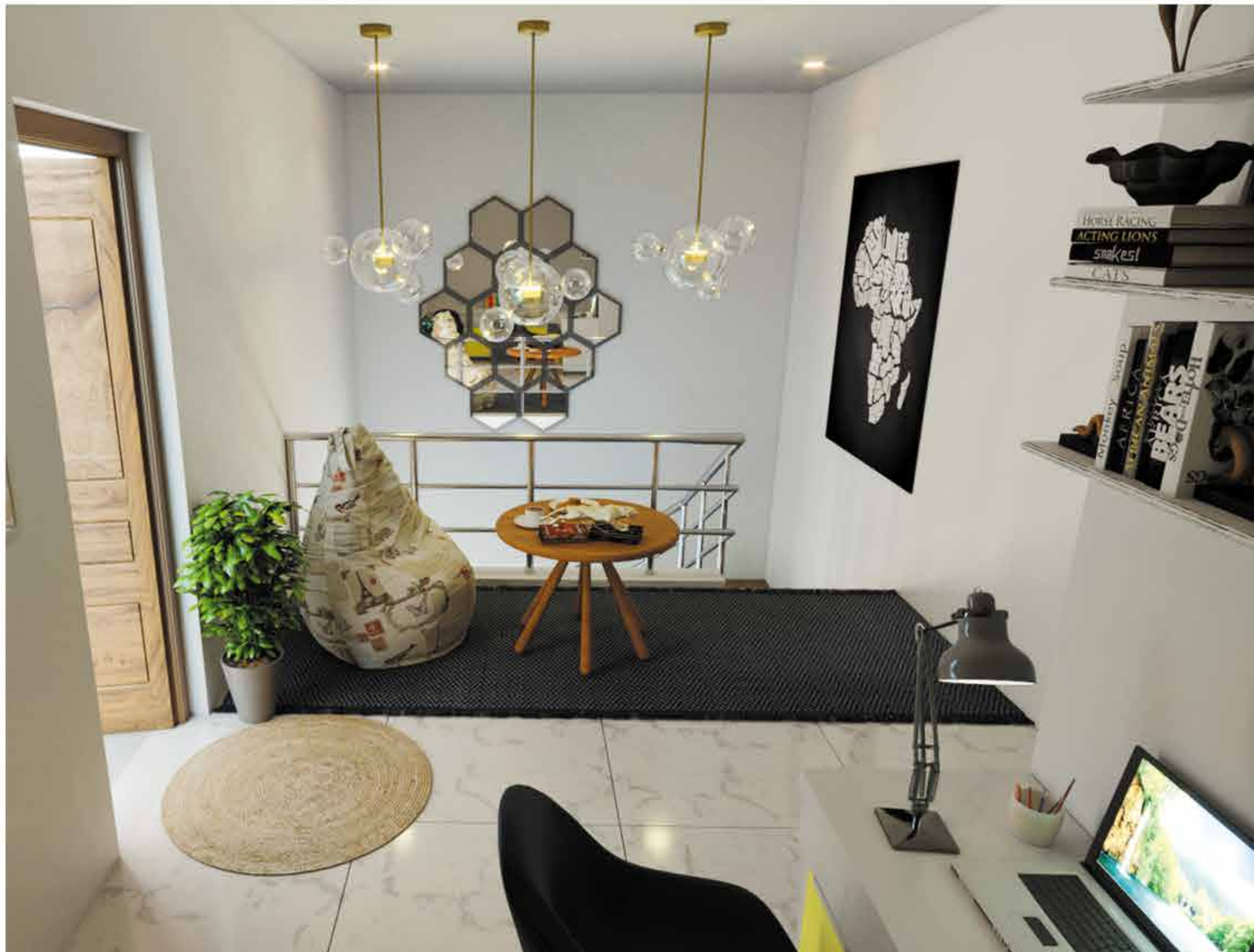


A GLIMPSE OF AN
ENCHANTING LIFE SPACE
DESIGNED
TO PERFECTION

Photographs of interiors, surrounding or location are digitally enhanced unless otherwise mentioned. No photos have been shot on site.



DUPLEX - LOWER LEVEL



DUPLEX - UPPER LEVEL



MASTER BEDROOM



BATHROOM



BEDROOM



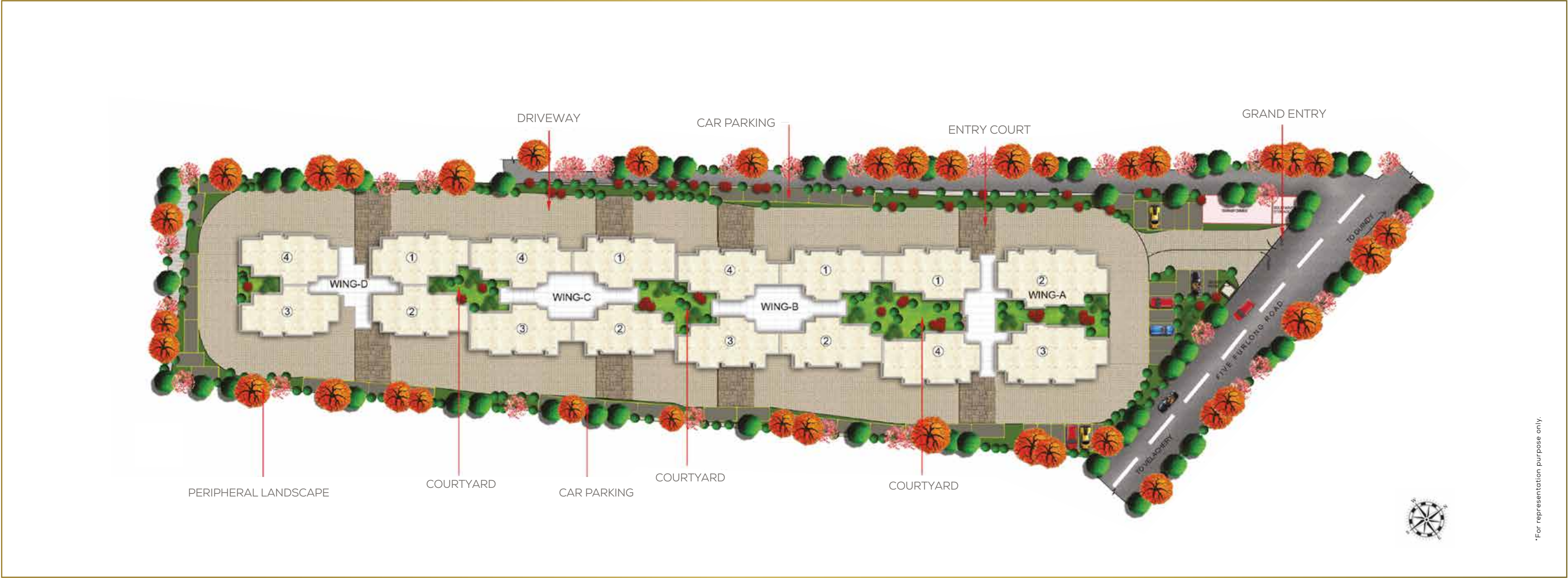
KITCHEN



BALCONY

BALCONY

MASTER PLAN



A sprawling property comprising of 4 towers with designated courtyards between each of the towers. The building comprises of three basement with mechanised/valet parking, stilt +12 habitable floors.

TYPICAL UNIT PLANS

LEGENDS :

1. Foyer

-

5'2" x 6'6"

2. Living/Dining

-

21'0" x 15'0"

3. Balcony

-

16'4" x 4'6"

4. Kitchen

-

10'4" x 9'4"

5. Utility

-

5'0" x 9'0"

6. Bedroom-2

-

14'6" x 12'0"

7. Toilet-2

-

5'10" x 8'0"

8. Bedroom-3

-

11'7" x 13'0"

9. Master Bedroom

-

12'0" x 15'1"

10. Toilet-1

-

8'6" x 6'0"

11. Toilet-3

-

8'0" x 6'0"



Indicative Saleable Area	~ 1925 Sq. ft.
Indicative Carpet Area	~ 1225 Sq. ft.
Indicative Usable Area	~ 1325 Sq. ft.

3-BHK LUXE

Furniture, fixtures or fittings shown in the floor plan are not standard and will not be provided in the apartment. Areas mentioned herein are approximate and shall vary based on selected apartment. Floor plans are in accordance with the latest approved sanctioned plan and are subject to changes mandated by government authorities and/or applicable laws from time to time.

LEGENDS :

LEGENDS :

1. Foyer

-

4'10" x 3'1"

2. Living/Dining

-

22'1" x 15'0"

3. Balcony

-

16'6" x 5'0"

4. Kitchen

-

11'5" x 9'3"

5. Utility

-

12'5" x 5'0"

6. Bedroom-2

-

12'0" x 14'0"

7. Toilet-2

-

5'6" x 8'6"

8. Toilet-4

-

5'0" x 9'3"

9. Bedroom-4

-

11'4" x 13'3"

10. Bedroom-3

-

12'0" x 14'0"

11. Toilet-3

-

5'2" x 8'4"

12. Master Bedroom

-

12'0" x 16'0"

13. Master Bedroom
Balcony

-

6'10" x 8'0"

14. Toilet-1

-

9'4" x 6'6"



Indicative Saleable Area	~ 2475 Sq. ft.
Indicative Carpet Area	~ 1500 Sq. ft.
Indicative Usable Area	~ 1665 Sq. ft.

4-BHK LUXE

TYPICAL PENTHOUSE UNIT PLAN



LOWER PENTHOUSE

Furniture, fixtures or fittings shown in the floor plan are not standard and will not be provided in the apartment. Areas mentioned herein are approximate and shall vary based on selected apartment. Floor plans are in accordance with the latest approved sanctioned plan and are subject to changes mandated by government authorities and/or applicable laws from time to time.



UPPER PENTHOUSE

IMPERIAL MANSIONS UNIT PLAN



IMPERIAL MANSIONS

5-BHK MODIFICATION REQUEST
Optional modification on a customer request combining 2 independent units of series 1 and 2 or series 3 and 4 in Tower D. The modification will continue to retain units in series 1 and 2 or series 3 and 4 as two independent units with 2 independent sale deeds and two independent main door numbers for all statutory and documentation purposes.

Furniture, fixtures or fittings shown in the floor plan are not standard and will not be provided in the apartment. Areas mentioned herein are approximate and shall vary based on selected apartment. Floor plans are in accordance with the latest approved sanctioned plan and are subject to changes mandated by government authorities and/or applicable laws from time to time.

TERMS & CONDITIONS

I/We understand that all features offered by the developer under the BluNex Life Package is an optional upgrade which comes at an additional cost for Home Owners. However as an inaugural promotional plan, the developer is offering the BluNex Life Package complementary to all purchasers of this project. The developer has appointed a specialised home automation vendor/s and such other vendors as may be required for the installation of BluNex. The installation of BluNex Life Package and integration of the same with the relevant smart appliances of the Home Owner shall be done post the Home Owners taking possession of their home. Most of the features of BluNex Life Package are technology based and I/We understand that the operation of the same shall require smart appliances/devices/fixtures, paid subscriptions to service providers, potential modifications, power, wi-fi connectivity and such things/services as may be required to customise the installation to the special situation that a home may demand, all of which may be at an additional cost to the Home Owner. I/We understand further that Technology/Technology Vendor evolve at a rapid pace with possibilities of redundancies and possibilities of non-compatibility of some or all of the features/devices of BluNex Life Package with some or all of the Home appliances owned by the Home Owner, in which case the Home Owner may need to upgrade their home appliances/devices/fixtures to take advantage of the offerings under the BluNex Life Package. I/We understand that the user interface on the BluNex app, Google Home app and on other home automation devices including the Google Home may change with time. I/We also understand all features, offerings, devices offered under the BluNex Life Package are beyond the Standard Specifications offered by the developer and hence the developer is precluded from any defect period liability on the same. Google and Google Home are trademarks of Google LLC. I/We understand that a detailed note of all specifications that come as part of the BluNex Life package shall be intimated to all Home Owners independently.