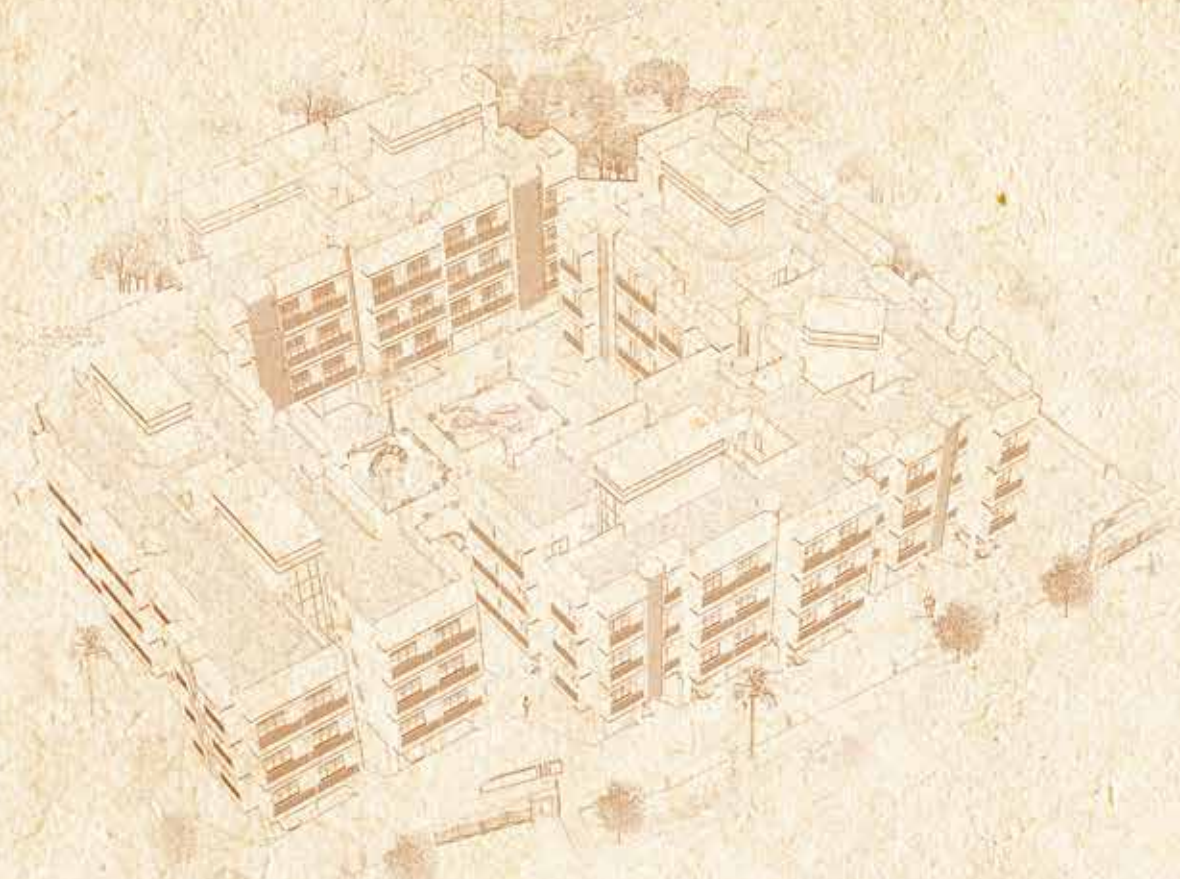




**RAJ**GROUP

"Dreams worth Realizing"



RAJ  
*S*HREE VAASTU

harigram - panvel





## THE PROJECT

*It's a place where you'll find everything set to a perfect tune according to your mood & style. Enveloped in nature's beauty, Raj Shree Vaastu offers modern living spaces with stunning designs that will for sure leave you speechless.*

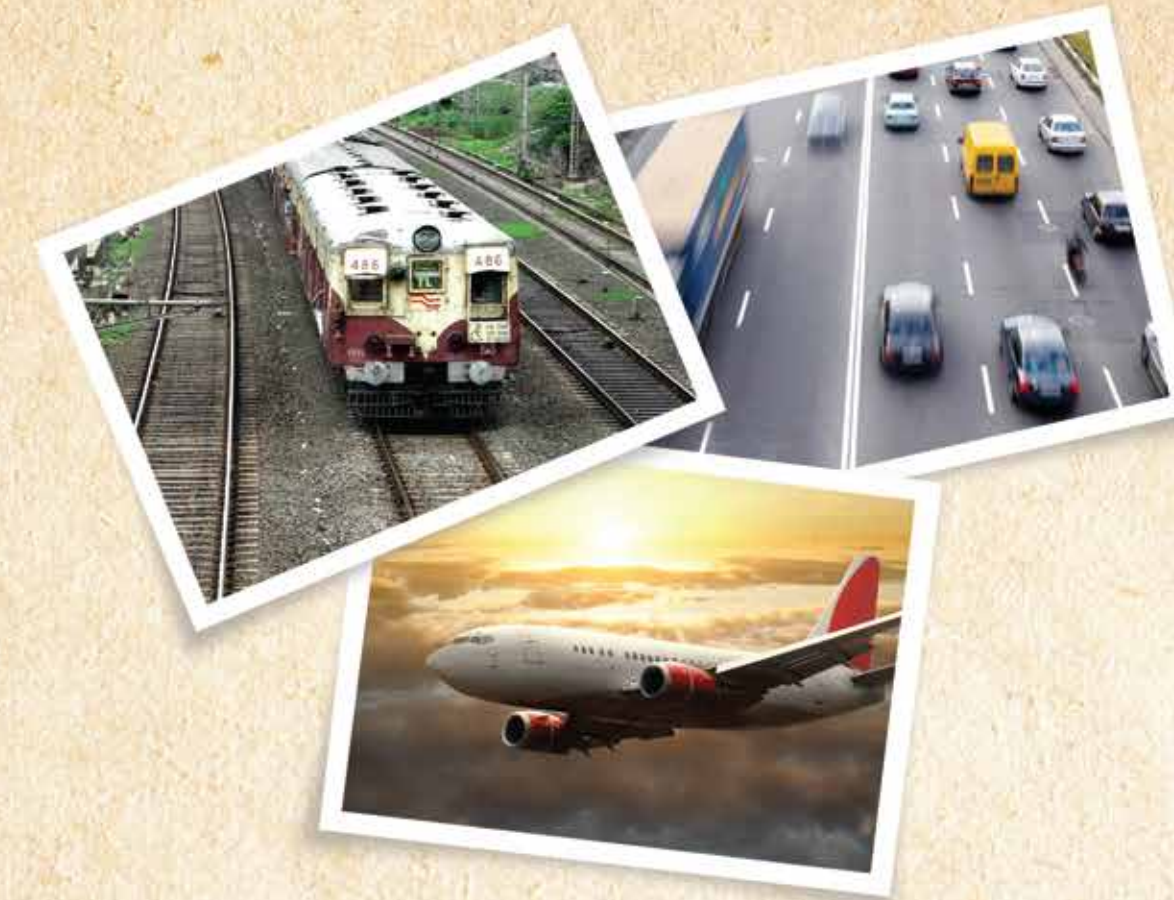
*It's a place where you'll find everything set to a perfect tune according to your mood & style. Enveloped in nature's beauty, Raj Shree Vaastu offers modern living spaces with stunning designs that will for sure leave you speechless.*

- Exclusive 7 building complex, vastu compliant 180 flats
- Stilt+ 4 storeyed buildings
- Grand decorative entrance lobby & main gate
- Earthquake resistant RCC structure
- Lush green landscaped garden & party lawn
- Children's play area
- Jogging track
- Senior citizen sitting area
- Uniquely designed elevation

RAJ  
**SHREE VAASTU**  
harigram - panvel







## THE LOCATION

*Today Panvel is the fastest developing node of Navi Mumbai. The life conveniences like School, Colleges, Shopping Malls, Hospitals, Bus and Train service are just a distance away from here.*

*Listening to seductive sounds of beautiful creatures in night and exploring the new places every day. It's a place where your every imagination gets fulfilled with a touch of nature. It's a place where you will find a whole new world awaiting for your presence.*

- *15 min. from Proposed Navi Mumbai International Airport*
- *8 min. from Panvel Railway Station*
- *2km from Ryan International & DAV Schools*
- *Upcoming SEZs – Approx 20 minutes*
- *2km radius in all major banks*
- *Peaceful location for a perfect home*
- *Connected to Shopping areas, Restnarent, Hospitals & Medicals*

RAJ  
**THREE VAASTU**  
harigram - panvel







## THE AMENITIES

### WALL FINISH

- *Internal walls painted in semi acrylic paint*
- *External walls coated with Acrylic paint*

### DOOR

- *Main door with decorative laminate finish & internal wooden doors*
- *Marble frame for all the doors of bath & WC*
- *Wooden door frames for all rooms*
- *Main door with good quality night latch & decorative handle*

### ELECTRICAL

- *Concealed copper wiring with reputed brand modular switches, telephone & TV (Cable) points in living room & bedrooms*

### WATERTANK

- *Underground & overhead tank with adequate storage capacity*

### TERRACE

- *Special water proofing treatment*

### FLOORING

- *2'X2' vitrified flooring tiles in all the rooms*

### KITCHEN

- *Granite kitchen platform with stainless steel sink*
- *Ceramic tiles dado above kitchen platform*

### WINDOWS

- *Anodized aluminium sliding windows*

### BATH & WC

- *Concealed plumbing with good quality sanitary fittings*
- *PVC plumbing fittings*
- *Glazed tiles up to full height*
- *Ceramic tiles flooring in bath & WC*
- *Good quality aluminium louvers in bath & WC*









# WING - A

## Typical Floor Plan

1st & 3rd Floor Plan



# WING - B

## Typical Floor Plan

1st & 3rd Floor Plan



RAJ  
**THREE VAASTU**  
 harigram - panvel

RAJ  
**THREE VAASTU**  
 harigram - panvel





# WING - C

## Typical Floor Plan

1st & 3rd Floor Plan



RAJ  
**THREE VAASTU**  
 harigram - panvel



# WING - D

## Typical Floor Plan

1st & 3rd Floor Plan



RAJ  
**THREE VAASTU**  
 harigram - panvel





# WING - E

## Typical Floor Plan

1st & 3rd Floor Plan



# RAJ SHREE VAASTU

harigram - panvel



# WING - F

## Typical Floor Plan

1st & 3rd Floor Plan



# RAJ SHREE VAASTU

harigram - panvel





# WING - G

## Typical Floor Plan

1st & 3rd Floor Plan



## 2BHK 3d Flat



RAJ  
**THREE VAASTU**  
harigram - panvel

RAJ  
**THREE VAASTU**  
harigram - panvel







1BHK 3d Flat

RAJ  
**THREE VAASTU**  
 harigram - panvel

OUR OTHERS ONGIONG PROJECTS



**RAJ ORCHID**  
 Sector 13, Kharghar, Navi Mumbai.



**RAJ KIRAN**  
 Chiple, Taluka - Panvel, Dist. Raigad.



**RAJ TULIP**  
 Sector 19, Kharghar, Navi Mumbai.



**RAJ HARMONY**  
 Aadai, Taluka - Panvel, Dist. Raigad.



**RAJ SAMRUDDHI**  
 Near Dena Bank, Chowk - Tupgaon,  
 Taluka Khalapur, Panvel, Dist. Raigad.



**RAJ SHRUSHTI**  
 Morewadi, Done Village, Vangani Done Road,  
 Behind More Nursery, Vangani (W).



**RAJ GARDENIA**  
 Usarli (Kburd), Taluka Panvel, Dist. Raigad.



**RAJ VAASTU**  
 Adai, Taluka Panvel, Dist. Raigad.



**RAJ ENCLAVE**  
 Aadai, Taluka - Panvel, Dist. Raigad.



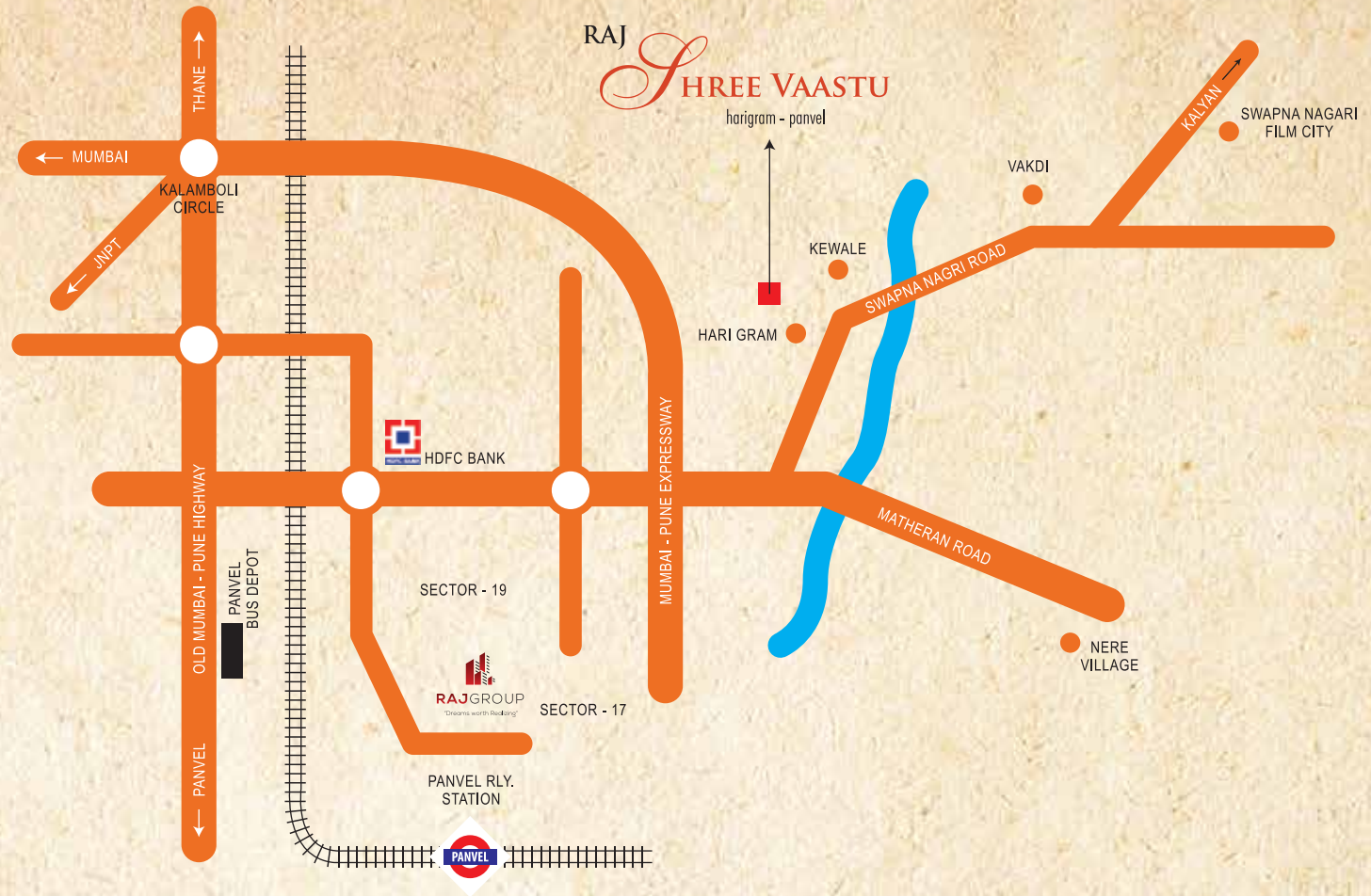
**SWAPNA LOK**  
 Sonarpada, Near Santoshi Mata Mandir,  
 Murbad, Taluka Murbad



**MEGA VILLA**  
 Nanegaon, Shiva Cha Pada,  
 Taluka Wada, Dist. Thane.







Project by



**RAJGROUP**

"Dreams worth Realizing"

Corporate Office : Raj House, C-75, Sector - 12, Kharghar, Navi Mumbai - 410210.

Phone : (022) 65000440 | Email : info@rajgroupsindia.com | Web : www.rajgroupsindia.com

Site Office : Hariagram, Taluka - Panvel, Dist. Raigad.

Sales Office : Shop No. 7 & 8, Pooja Complex, Sector 17, Opp. Panvel Rly. Stn., New Panvel - 410206.

*Call us on : 9167645656 / 9167205656*

Architect

CREAZARCH ARCHITECT

RCC Consultant

KK PATEL

Architectural 3D & Brochure

LEMONSTUDIOZ.com

DISCLAIMER : This brochure is purely conceptual, indicative and not a legal offering. All illustrations & pictures are artist's impression only. The plans, drawing, amenities etc. are subject to the approval of respected authorities and may be changed without notifications if necessary. The Promoter / Architect reserves the rights to add / desire / alter any items / details / specifications / elevations mentioned here in. The amenities shown inside and stock images in the brochure are purely indicative. This work is a copyright of RAJ GROUP and cannot be reproduced in any form whatever.

