

Project by:



# Chaitrashree Lifestyle

For a smart way of living...

2 & 3 BHK Luxurious Flats @ Rajarajeshwarinagar, Bengaluru

*Explore the luxury of space  
with chaitrashree lifestyle*



**RERA NO: PRM/KA/RERA/1251/310/PR/020822/005116**

*As close as you can get  
to drive-in comforts ...*



CHAITRASHREE LIFESTYLE





# Ground Floor Plan



# Typical Floor Plan



NO COMMON WALLS

## GROUND FLOOR - AREA STATEMENT IN SQ. FT

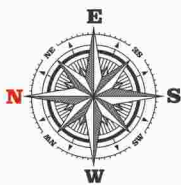
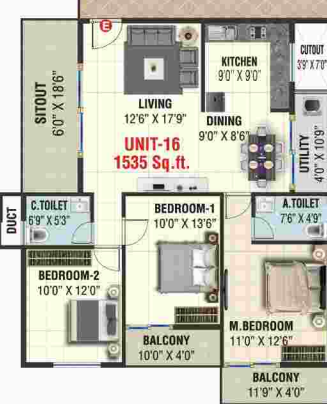
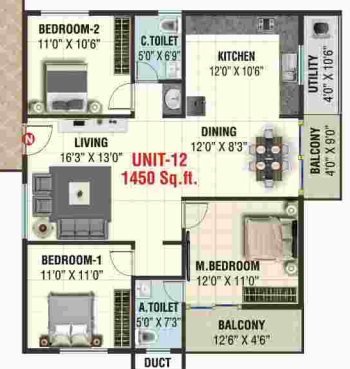
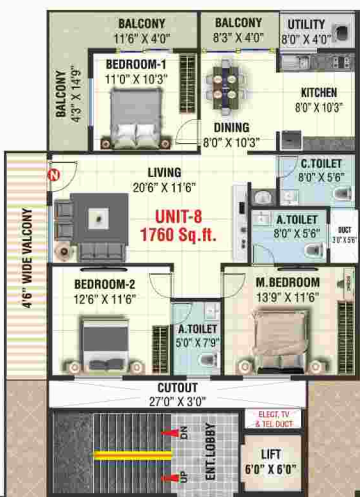
UNIT No.	1	2	3	4	5	6	7	8
TYPE :	3 BHK	3 BHK	2 BHK	2 BHK	2 BHK	3 BHK	3 BHK	3 BHK
AREA :	1615 Sq.ft.	1495 Sq.ft.	1075 Sq.ft.	1075 Sq.ft.	1215 Sq.ft.	1300 Sq.ft.	1455 Sq.ft.	1555 Sq.ft.
FACING :	NORTH	NORTH	EAST	EAST	NORTH	EAST	EAST	NORTH

UNIT No.	9	10	11	12	13	14	15	16
TYPE :	2 BHK	2 BHK	3 BHK	3 BHK	3 BHK	2 BHK	2 BHK	3 BHK
AREA :	1130 Sq.ft.	1245 Sq.ft.	1355 Sq.ft.	1335 Sq.ft.	1575 Sq.ft.	1495 Sq.ft.	1020 Sq.ft.	1400 Sq.ft.
FACING :	NORTH	EAST	NORTH	NORTH	EAST	EAST	EAST	EAST

## FIRST, SECOND, THIRD, FOURTH & FIFTH FLOOR - AREA STATEMENT IN SQ. FT

UNIT No.	1	2	3	4	5	6	7	8
TYPE :	3 BHK	3 BHK	2 BHK	2 BHK	2 BHK	3 BHK	3 BHK	3 BHK
AREA :	1615 Sq.ft.	1580 Sq.ft.	1135 Sq.ft.	1135 Sq.ft.	1215 Sq.ft.	1600 Sq.ft.	1525 Sq.ft.	1760 Sq.ft.
FACING :	NORTH	NORTH	EAST	EAST	NORTH	EAST	EAST	NORTH

UNIT No.	9	10	11	12	13	14	15	16
TYPE :	2 BHK	2 BHK	3 BHK	3 BHK	3 BHK	3 BHK	2 BHK	3 BHK
AREA :	1260 Sq.ft.	1245 Sq.ft.	1390 Sq.ft.	1450 Sq.ft.	1640 Sq.ft.	1545 Sq.ft.	1145 Sq.ft.	1535 Sq.ft.
FACING :	NORTH	EAST	NORTH	NORTH	EAST	EAST	EAST	EAST





NOW PROUDLY PRESENTING CHAITRASHREE LIFESTYLE



# Chaitrashree Lifestyle

For a smart way of living...

Introducing "CHAITRASHREE LIFESTYLE" a BBMP approved well planned 2/3 BHK Residential Apartments located at Rajarajeshwari Nagar Main Road, Bangalore. "CHAITRASHREE LIFESTYLE" is designed as the perfect place for modern living, Combining quality and value with attention to detail and contemporary design. "CHAITRASHREE LIFESTYLE" is a striking architectural development of total 96 units. Experience the spacious and luxury 2 and 3 bedroom flats which are very well planned as per vastu and offer abundant ventilation and fresh air apart from mesmerizing views of greenery and serene surroundings.

"CHAITRASHREE LIFESTYLE" is designed to give you the feel of your own space, it is a home that mirrors your growth, ambition and offers you everything in nature - the space, the views, the fresh air and the light. For those who want the best, here's a home that understands you well. With "CHAITRASHREE LIFESTYLE" experience your life, living to the fullest and spending quality time with your loved ones.

"CHAITRASHREE LIFESTYLE" is located minutes away from educational institutions, shopping malls, cinema halls, super markets, show rooms and corporate hospital. There is an enhanced public transport system and metro rail to reach any corner of Bangalore city.

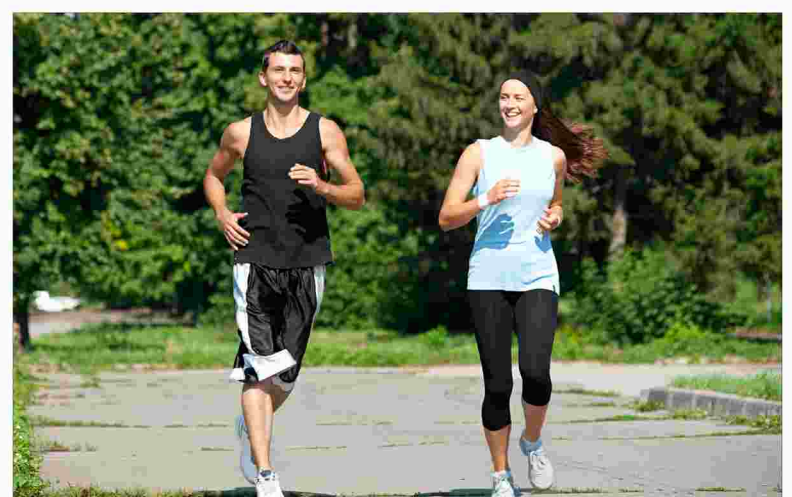
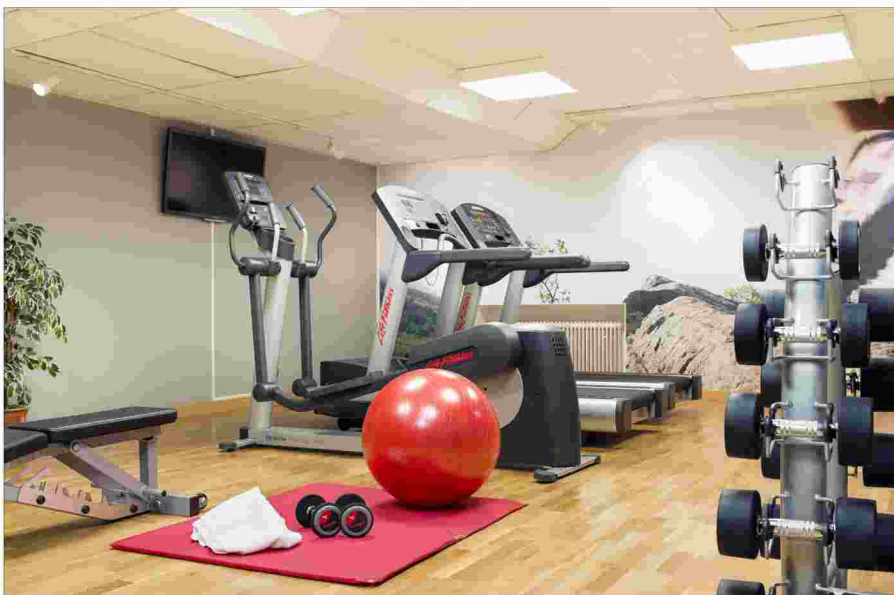
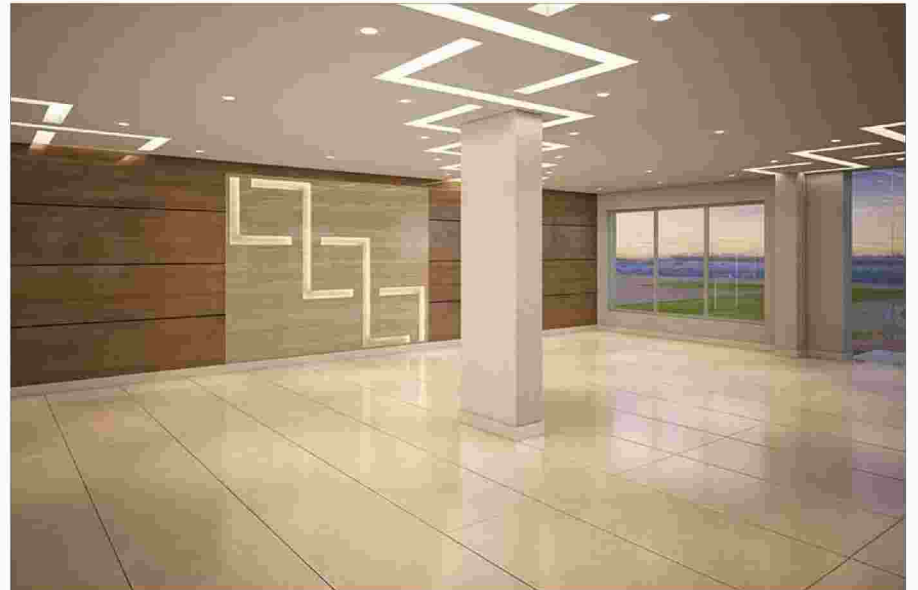
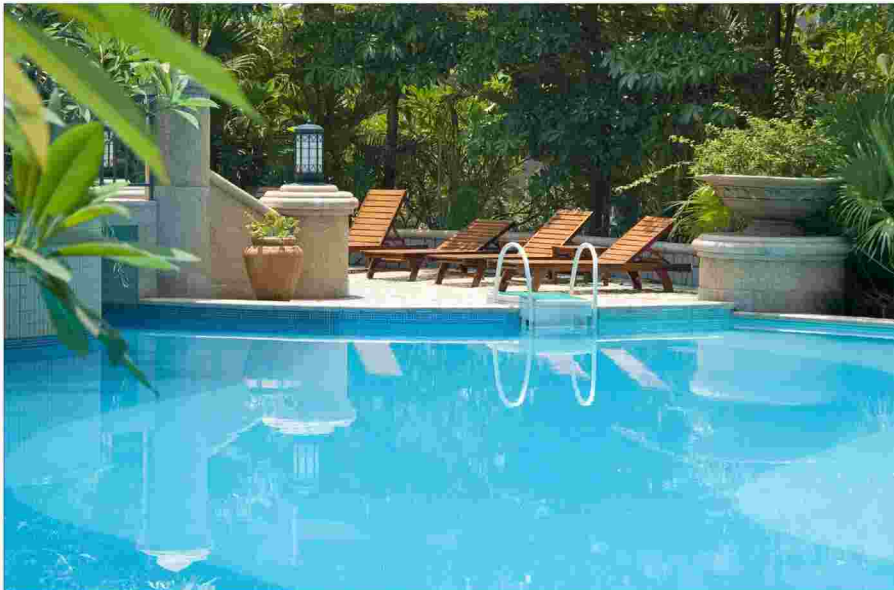
"CHAITRASHREE DEVELOPERS" is a leading property developer company that provides urban realty strategies underpinned by specialized civil engineering services high quality living environments. "CHAITRASHREE DEVELOPERS" always strived to achieve excellence in the field of Construction and works continuously to ensure total satisfaction for our clients. The company always tries to attain perfection in their passion.

"CHAITRASHREE DEVELOPERS" ensures utmost satisfaction by maintaining quality, completing the project as per schedule and committed towards building a "value for money" concept. "CHAITRASHREE DEVELOPERS" is very particular on careful detailing on vastu aspects and innovative features. We are in construction industry with a commitment to excellence in service we deliver projects in a manner that reflects the values of clients. We understand and design your family's need for space.



*Lifeline comforts  
for lifestyle living...*

Chaitrashree  
**Lifestyle**  
For a smart way of living...





# SPECIFICATIONS



## STRUCTURE

- Basement + Ground + 5 storied.
- RCC framed structure with necessary footing columns and beams.
- All of Reinforced cement concrete as per structural design. Walls of solid concrete blocks.



## PLASTERING

- **Internal Walls** : Smooth Finish.
- **External Walls**: Sponge Finish.



## FLOORING

- **Living, Dining, Bedroom, Kitchen**  
– Vitrified tiles
- **Balconies / Utility / Bathrooms**  
– Anti skid Ceramic tiles
- **Bathrooms Walls** – ceramic tiles dado up to 7'0"
- **Lobby & Stair case area** – Granite / Tiles.



## DOORS & WINDOWS

- **Main Door** - Teak wood frame & Teak finish shutter
- **Internal Doors** - hard wood frame and Skin Doors
- **Windows** - UPVC Sliding window with safety grills. (with Mosquito Mesh)



## KITCHEN

- Necessary Electrical & Plumbing Provision.



## RAILINGS

- All the balconies have 4" Concrete Block work with MS railings.



## BATHROOM FITTING

- **Fitting & Fixtures** – Hindware or Equivalent.
- **Cp Fitting** – Jaquar or Equivalent.
- Provision for exhaust fan & Geyser.



## ELECTRICAL

- Fire resistant electrical wires. Concealed copper wiring with adequate light points of anchor 'ROMA' make or equivalent.
- Cable point & Telephone point at living room & master bedroom.
- AC point provisions in master bedroom.



## PAINTING

- **Interior** - 2 coats of Tractor Emulsion paint.
- **Exterior** - ACE or Apex painting.
- **Window Grills** - Enamel paint.



## WATER SUPPLY

- Continuous water supply through bore well quality pressure tested plumbing and fully concealed pipes.
- Cauvery water Provision.



## GENERAL SERVICES

- Rain water Harvesting • Sewage treatment plant.
- Power back up for common area & Flats
- Intercom facility.
- 3 nos Elevators Schindler / Equivalent



## SECURITY SYSTEMS

- Security Round the clock.

## BEST IN AMENITIES



Swimming Pool



Children Play Area



Multipurpose Hall



Gym Room



CCTV Surveillance



Rain Water Harvesting



STP



Jogging Track



Power Backup 24 hrs



Intercom Facility



Automatic Lifts



24 Hrs Water Supply



Car Parking



24 Hrs Security

Chaitrashree Lifestyle  
For a smart way of living...



Loans arranged by all Leading Banks

# How To Reach Our Project



## Location Advantage

### Proximity

- 1 KM from Nimishamba Temple & Rajarajeshwari Temple
- 2 KM from Mysore Road
- 1 KM from Shakti Resorts
- Close to Best Club

### Educational Inst. Schools

- Candour 5 Education Academy
- Global Academy of Technology
- Jnanakshi school
- Lalith Castle International School
- Mount Carmel School
- National Hill View Public School
- BGS School • Baldwin School
- National Public School
- RNS School

### Super Markets

- Gopalan Mall • Food World
- BEML Shopping Complex
- Multiplex • Star Bazaar

### Hospitals

- Jayadev Memorial Rashtrorathana Hospital and Research Centre
- BGS Global Hospital
- SS Sparsh Hospital
- Unity Hospital
- Olympus Hospital

### Engineering College

- Global Engineering College
- RNS IT Institutions
- JSS College
- PESIT
- SJBIT Engineering College
- Bangalore University Campus

### Medical College

- BGS Medical College
- Rajarajeshwari Medical / Dental College

### IT PARK

- Global Village

PROJECT BY:



### Project Address :

Property No. 3745/55/2/6283/205, 80ft Road,  
Kenchanhalli Main Road, Near Srinivaspura Cross,  
Rajarajeshwari Nagar, Bangalore-560098.

For Booking Call

**+91 9035853645**