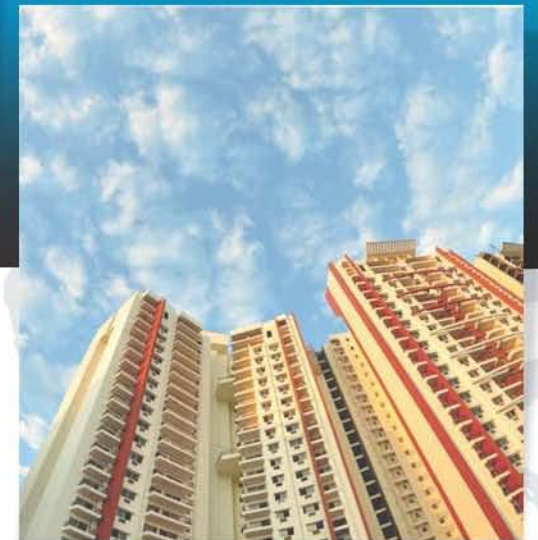




SOLID FOUNDATION FOR GOOD LIVING

 **LANDCRAFT**
GOLF LINKS
NH-24, Ghaziabad
FLATS • VILLAS • PLOTS



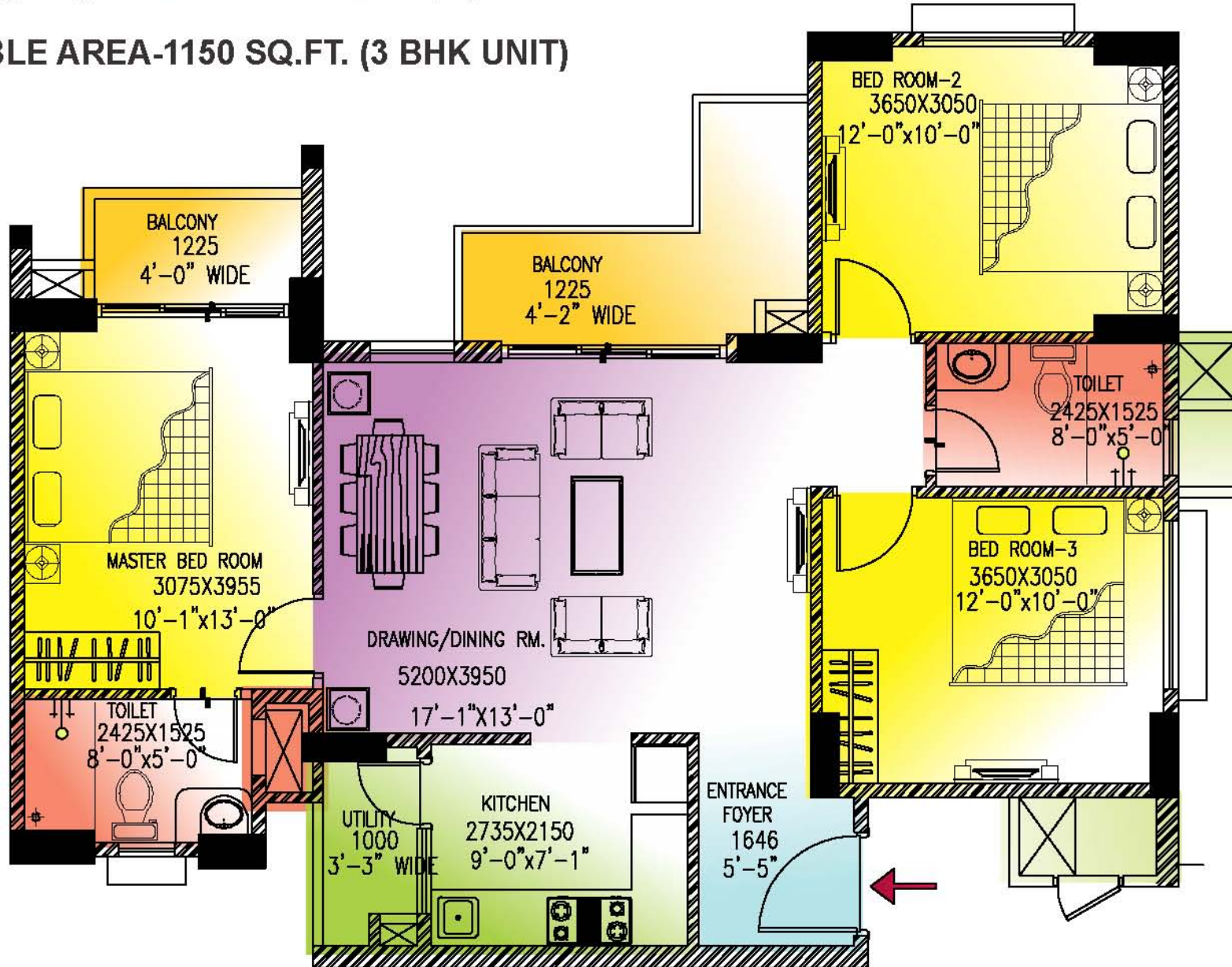
Elevate your Lifestyle



Actual Site Photo

FLOOR PLANS

SALEABLE AREA-1150 SQ.FT. (3 BHK UNIT)

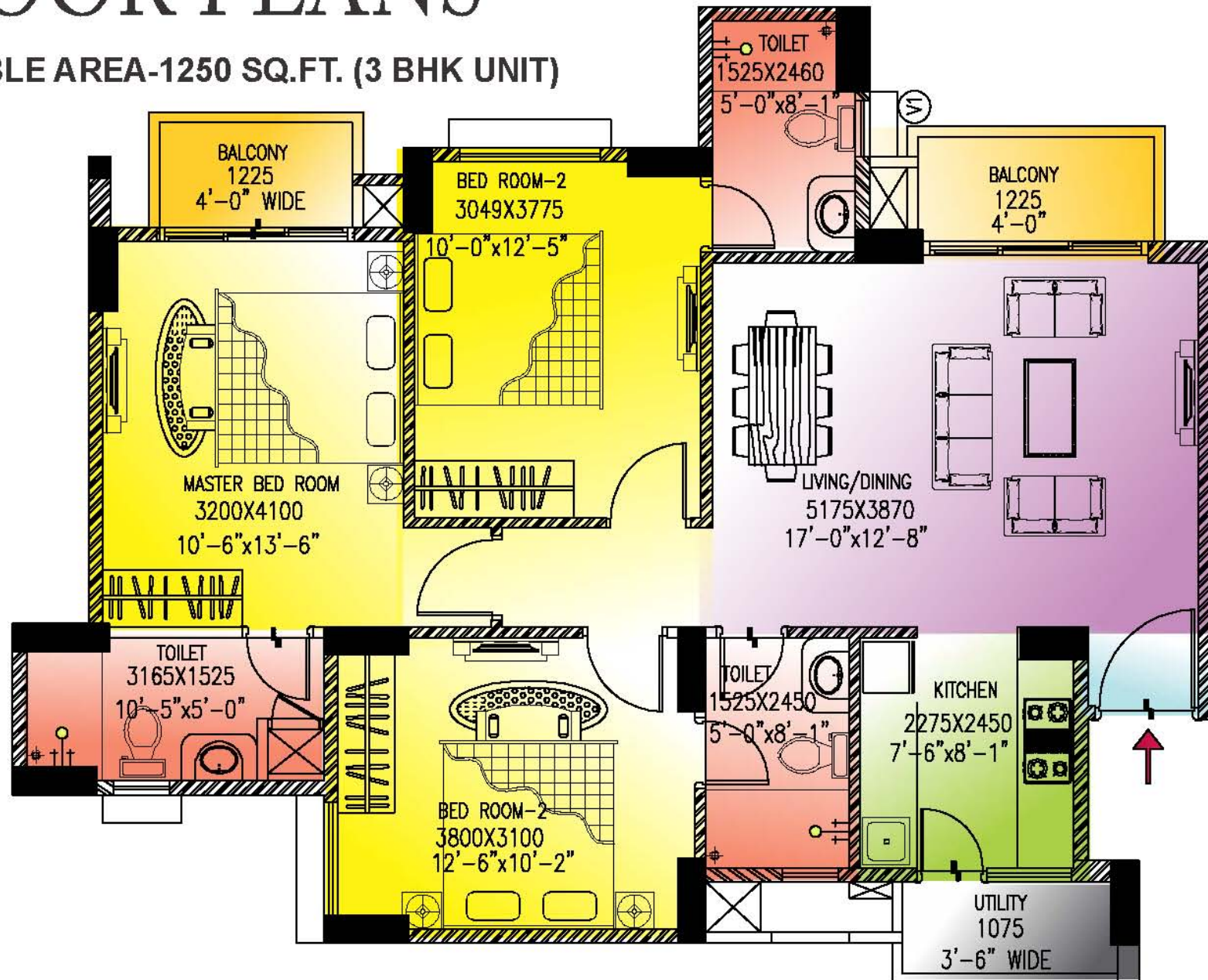


■ Foyer
 ■ Living & Dining
 ■ Bedrooms
 ■ Kitchen
 ■ Balcony
 ■ Utility Room/ Servant
 ■ Toilet

*The catalogue shows all feet inches dimensions in mm for your easy understandability

FLOOR PLANS

SALEABLE AREA-1250 SQ.FT. (3 BHK UNIT)

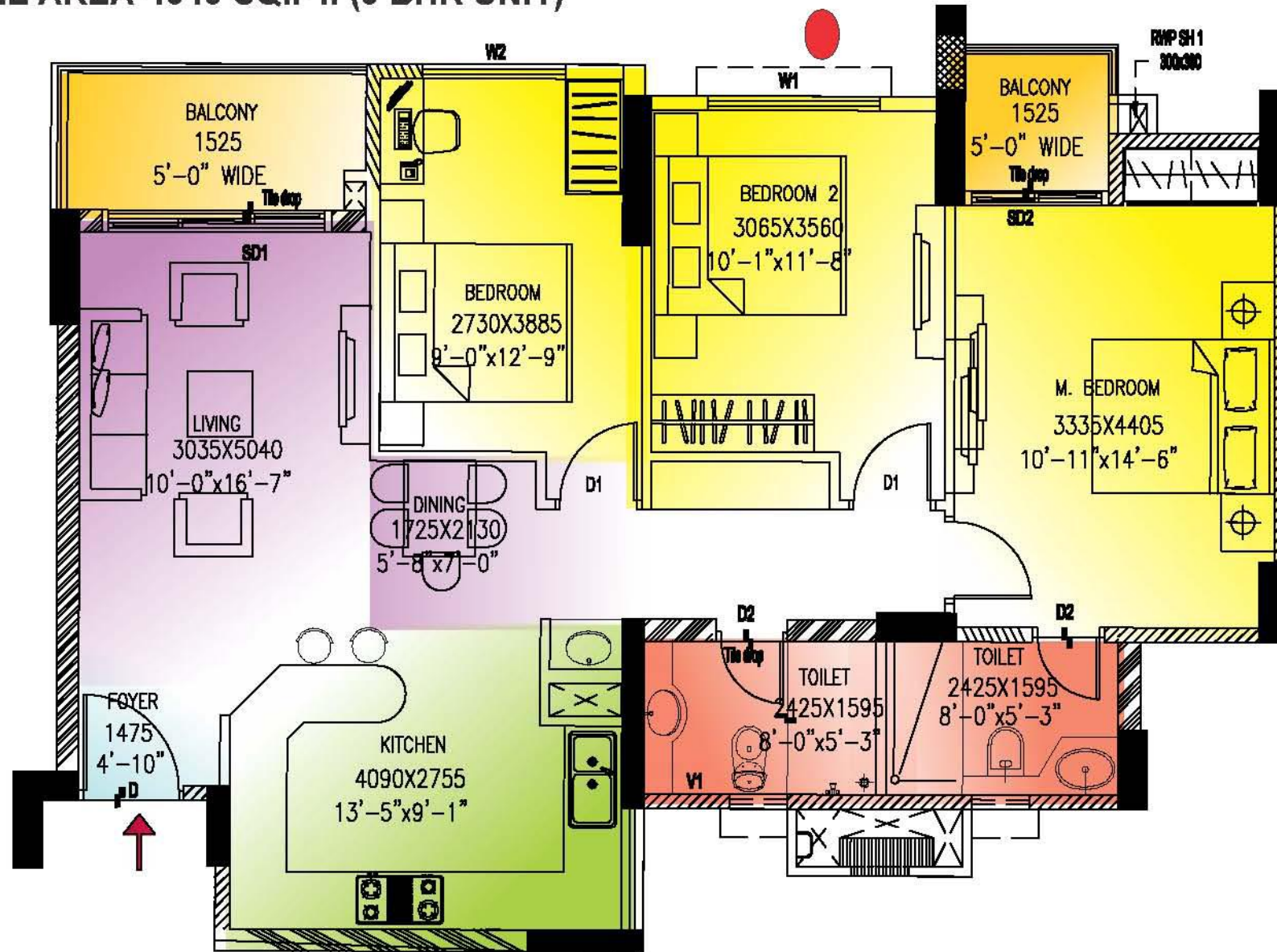


Foyer Living & Dining Bedrooms Kitchen Balcony Utility Room/ Servant Toilet

*The catalogue shows all feet inches dimensions in mm for your easy understandability

FLOOR PLANS

SALEABLE AREA-1315 SQ.FT. (3 BHK UNIT)

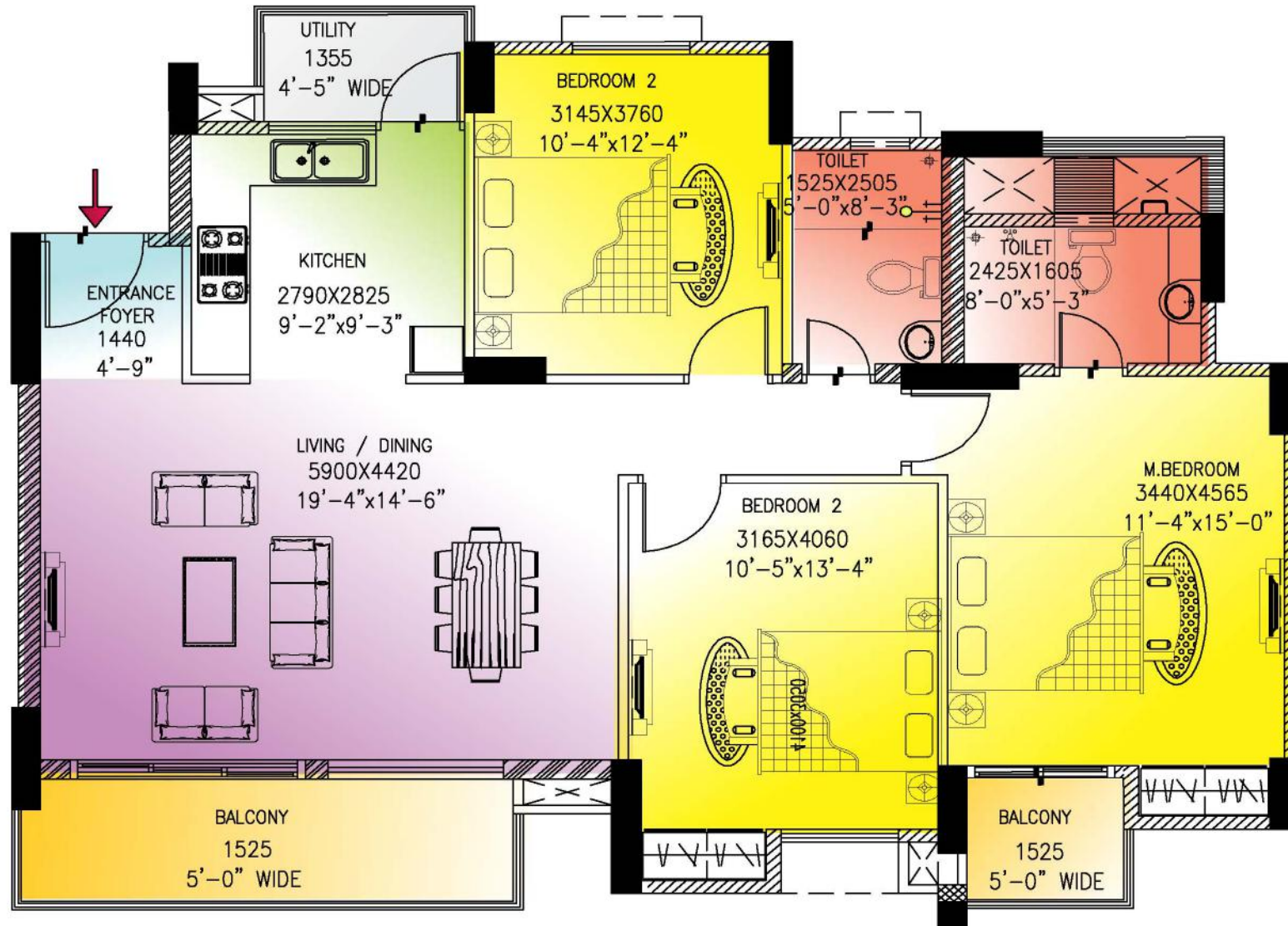


■ Foyer
 ■ Living & Dining
 ■ Bedrooms
 ■ Kitchen
 ■ Balcony
 ■ Utility Room/ Servant
 ■ Toilet

*The catalogue shows all feet inches dimensions in mm for your easy understandability

FLOOR PLANS

SALEABLE AREA-1470 SQ.FT. (3 BHK UNIT)

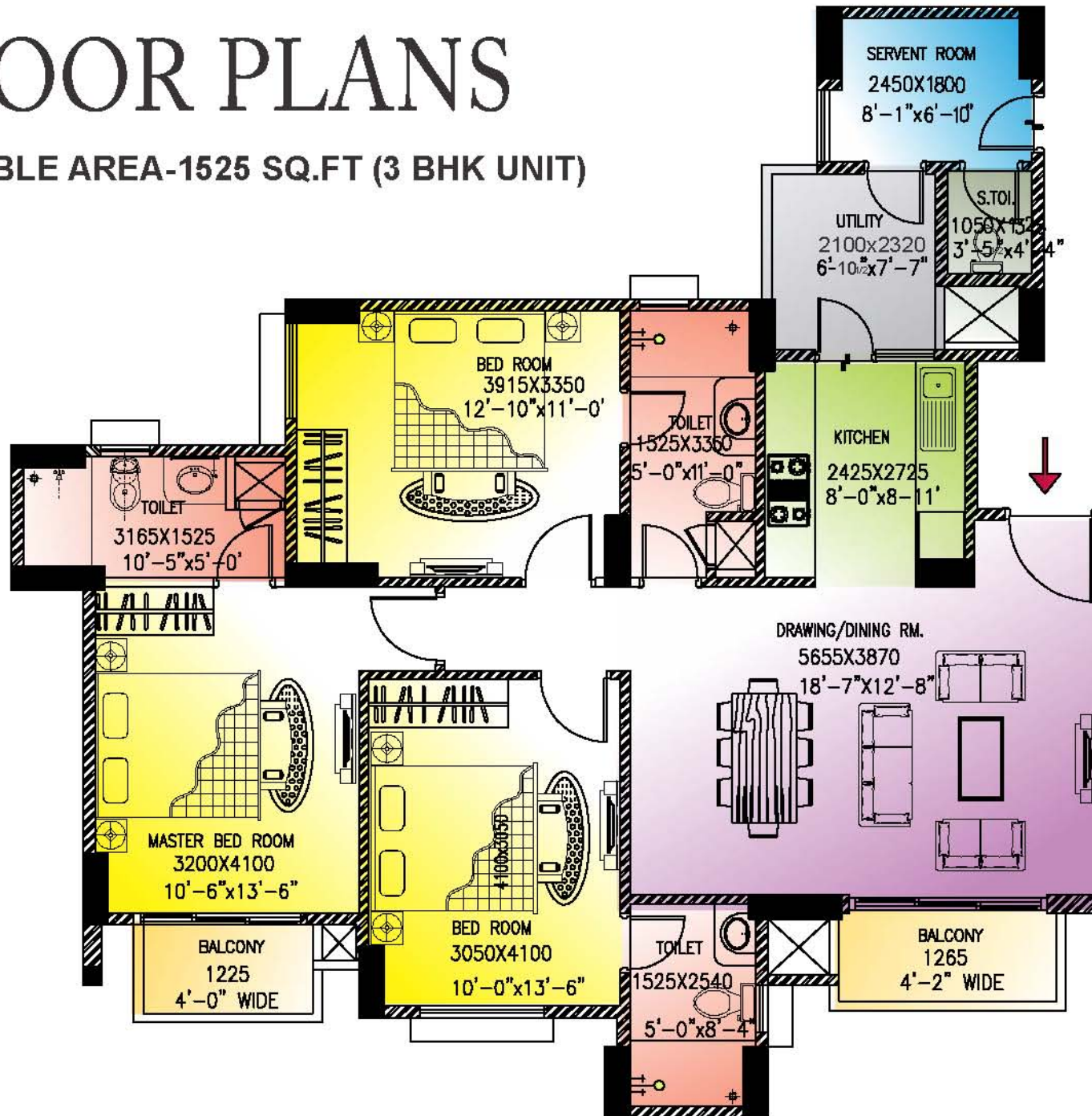


■ Foyer
 ■ Living & Dining
 ■ Bedrooms
 ■ Kitchen
 ■ Balcony
 ■ Utility Room/ Servant
 ■ Toilet

*The catalogue shows all feet inches dimensions in mm for your easy understandability

FLOOR PLANS

SALEABLE AREA-1525 SQ.FT (3 BHK UNIT)

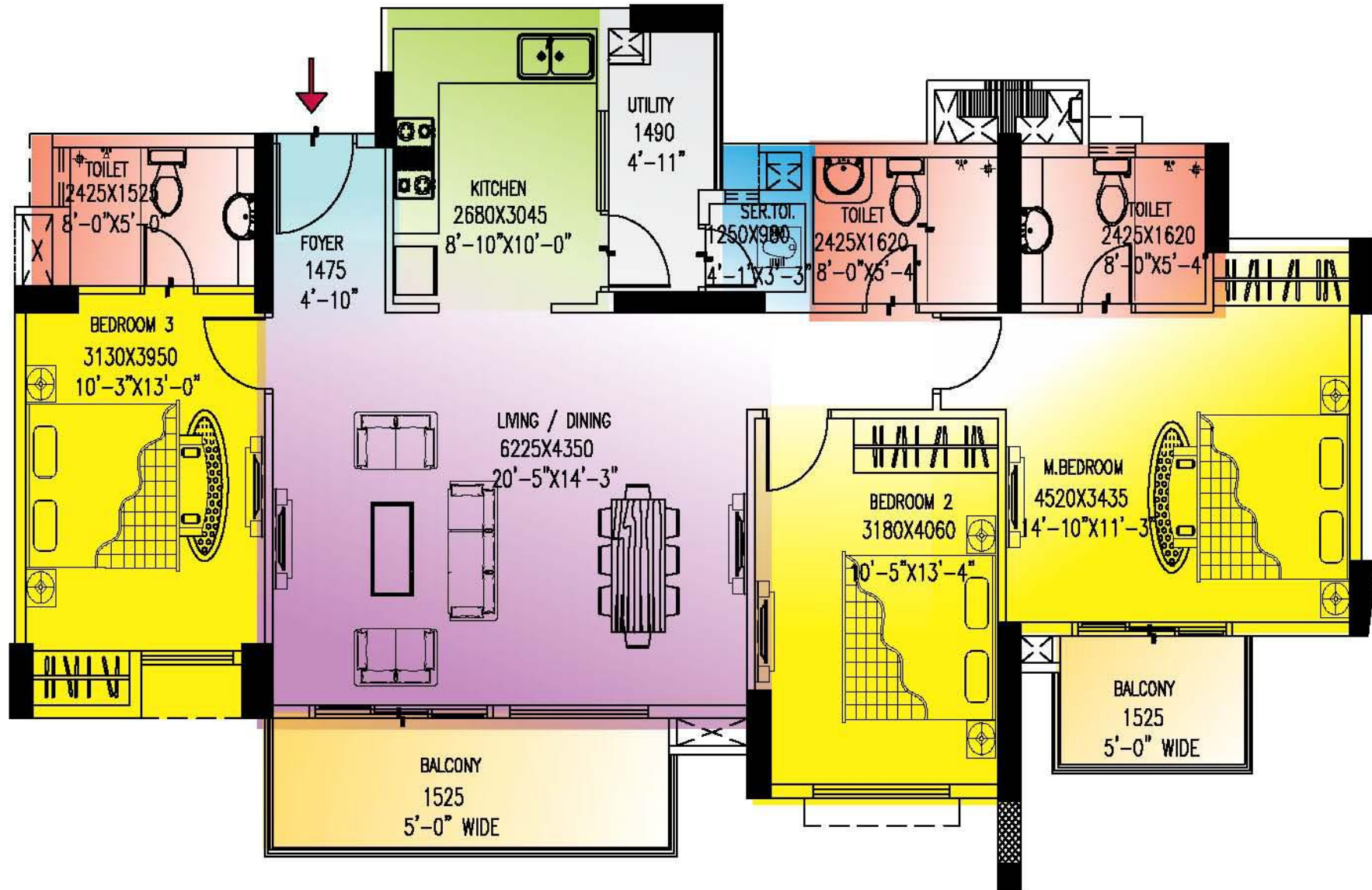


■ Foyer
 ■ Living & Dining
 ■ Bedrooms
 ■ Kitchen
 ■ Balcony
 ■ Utility Room/ Servant
 ■ Toilet

*The catalogue shows all feet inches dimensions in mm for your easy understandability

FLOOR PLANS

SALEABLE AREA-1630 SQ.FT. (3 BHK UNIT)

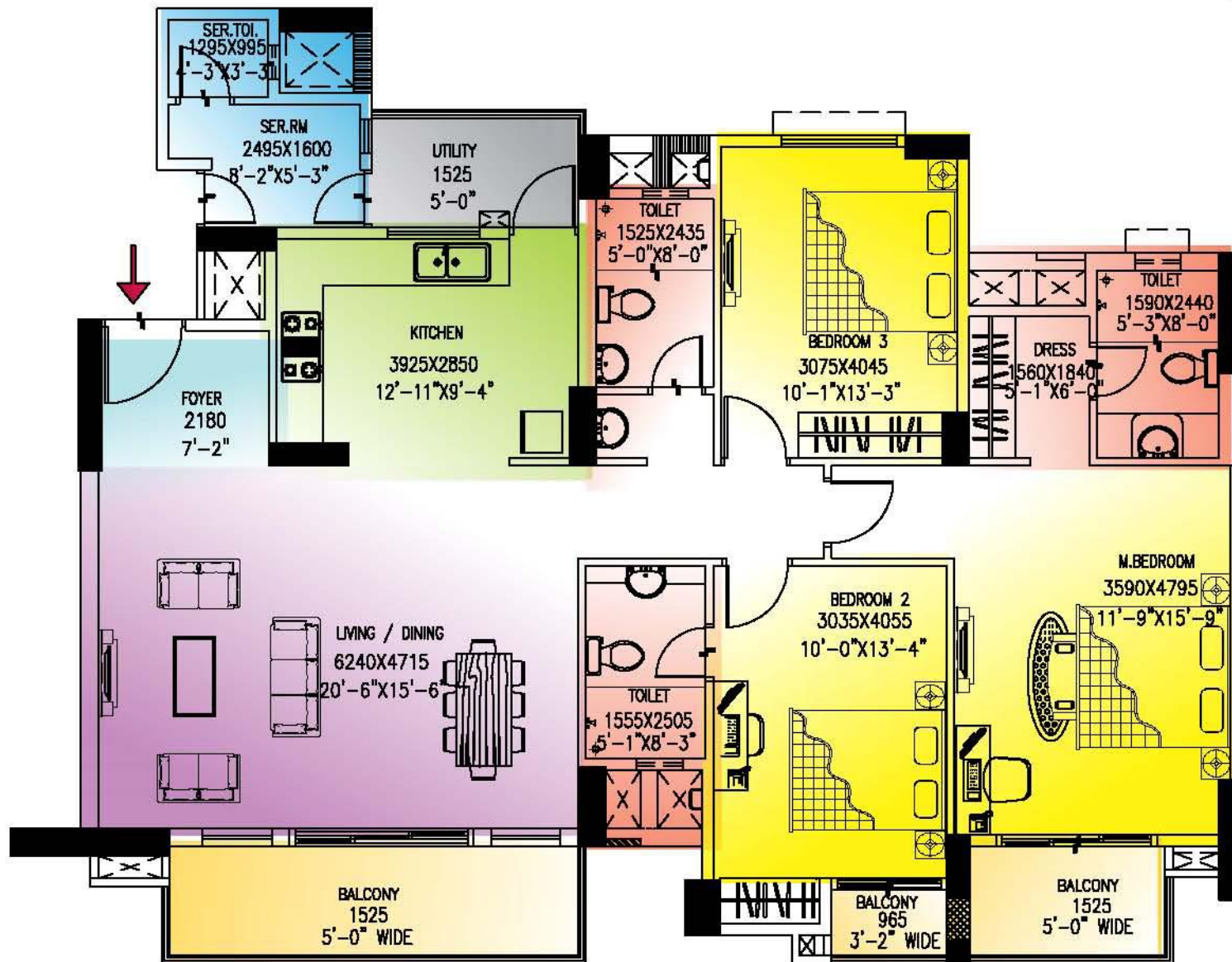


Foyer Living & Dining Bedrooms Kitchen Balcony Utility Room/ Servant Toilet

*The catalogue shows all feet inches dimensions in mm for your easy understandability

FLOOR PLANS

SALEABLE AREA-1880 SQ.FT. (3 BHK UNIT)

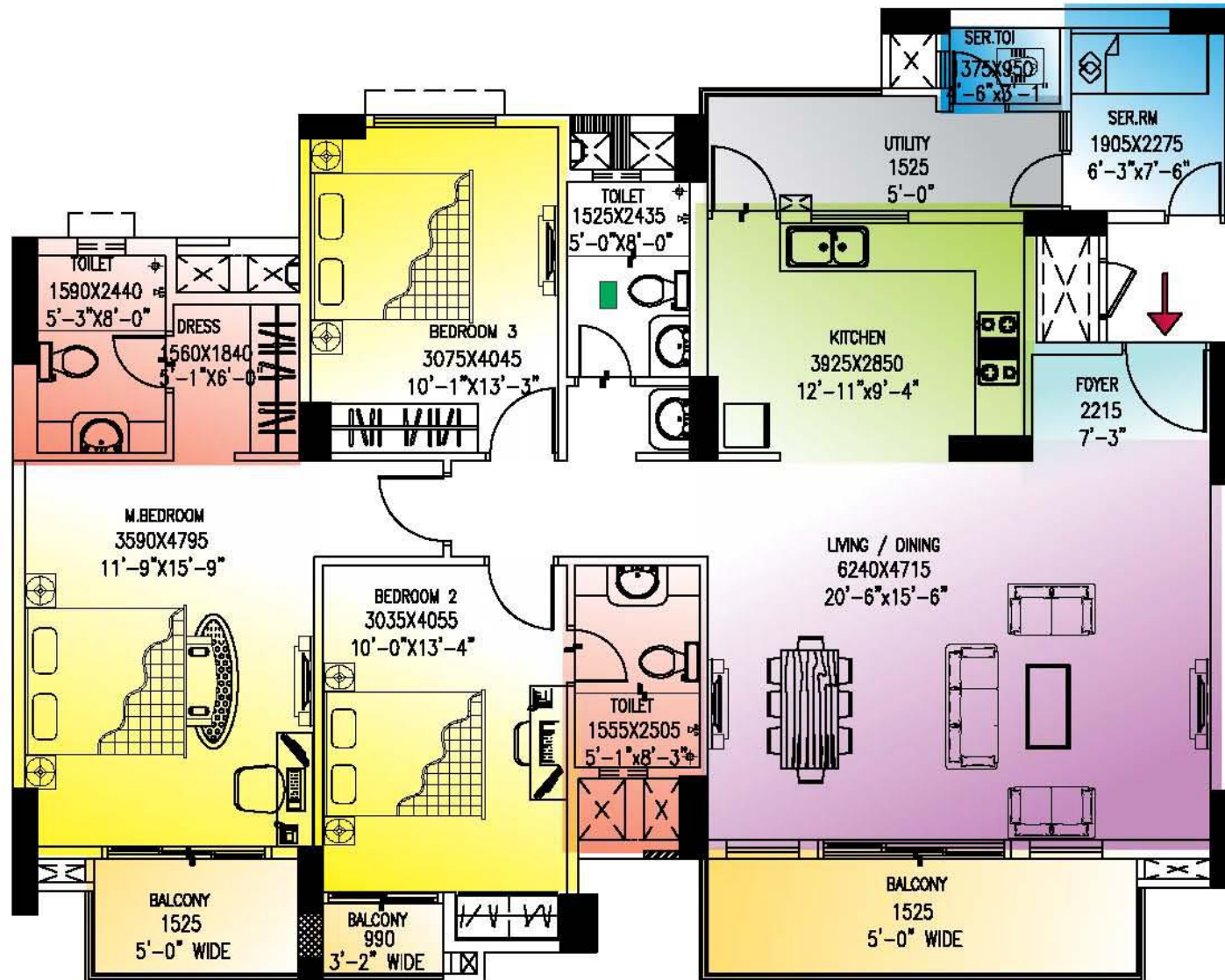


■ Foyer
 ■ Living & Dining
 ■ Bedrooms
 ■ Kitchen
 ■ Balcony
 ■ Utility Room/ Servant
 ■ Toilet

*The catalogue shows all feet inches dimensions in mm for your easy understandability

FLOOR PLANS

SALEABLE AREA-1895 SQ.FT. (3 BHK UNIT)

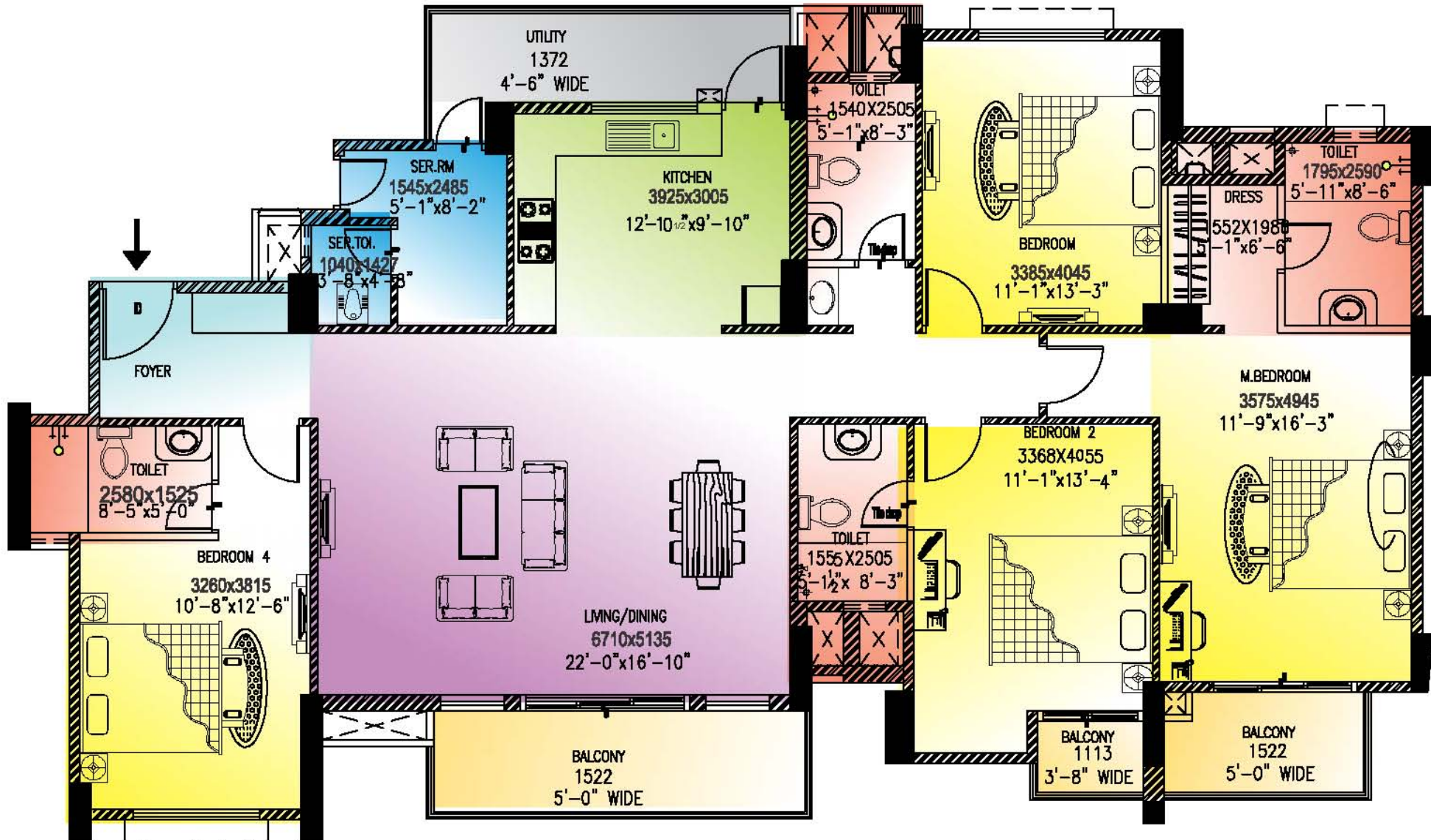


■ Foyer
 ■ Living & Dining
 ■ Bedrooms
 ■ Kitchen
 ■ Balcony
 ■ Utility Room/ Servant
 ■ Toilet

*The catalogue shows all feet inches dimensions in mm for your easy understandability

FLOOR PLANS

SALEABLE AREA-2370 SQ.FT. (4 BHK UNIT)



■ Foyer
 ■ Living & Dining
 ■ Bedrooms
 ■ Kitchen
 ■ Balcony
 ■ Utility Room/ Servant
 ■ Toilet

*The catalogue shows all feet inches dimensions in mm for your easy understandability

Live Life Luxuriously!

Perfectly fused with luxury, sophistication and nature,
Golf Link is being created with passion that matches
your undying desire for an elegant life!

Be it graceful apartments, superlative environment
and luxurious facilities, everything at
Golf Links exudes rich taste!

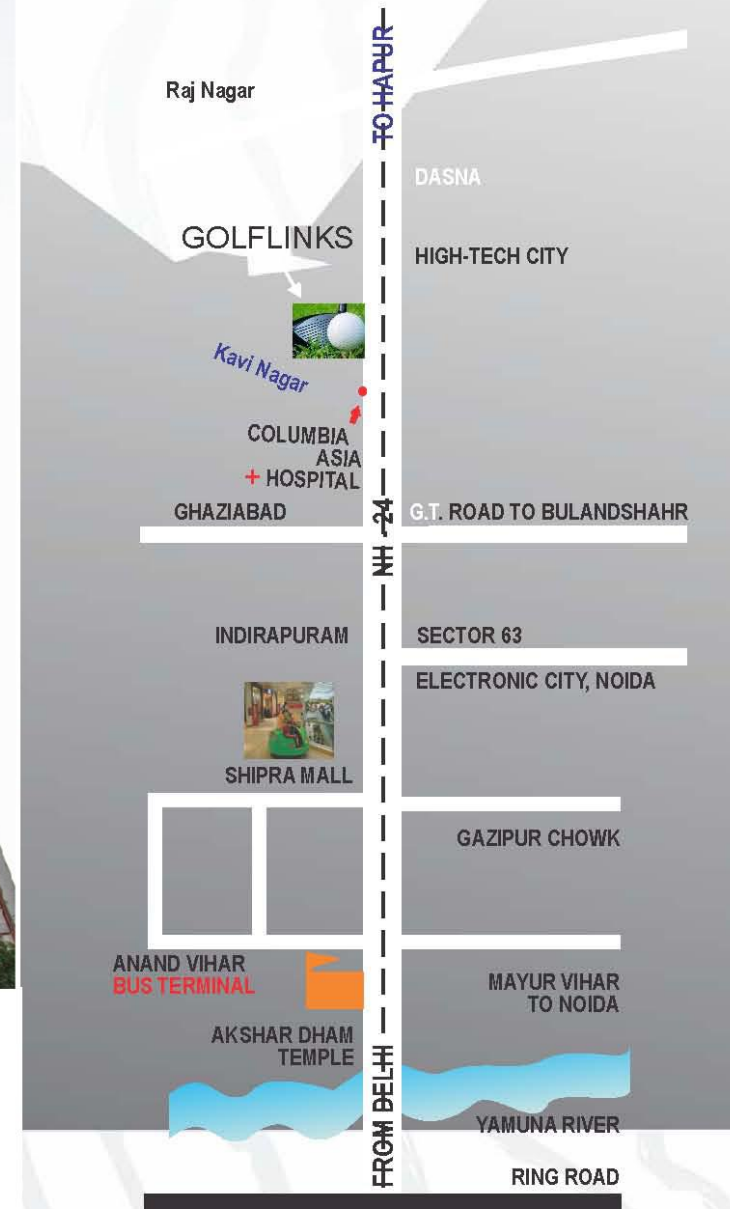
Artistic Impression



Garg Group



LOCATION MAP



Landcraft Developers Pvt. Ltd.

Corporate Office - Golf Links, NH-24, Near Columbia Hospital, Village Mehrauli, Paragna Dasna, Tehsil & District Ghaziabad, Uttar Pradesh - 201002

Sales: +91-8585900157, Office +91-120-4185000, Info@Landcraft.In

Registered Office - Parmesh Corporate Tower, 309, IIIrd Floor

Plot No.13, Karkardooma Community Center, Delhi-110092

GolfLinks Marketing: 8882131010, SMS 'LGL' 56161

CIN No. : U45201DL2005PTC132131

Visuals representation in this brochure is purely conceptual. All building plans, Specifications, Layout Plans etc. are tentative & subject to variation & modification by the company or by competent regulatory authorities sanctioning plans. Brand names appearing in the brochure are for artwork purpose only.

Brochure Design (In-house Design-LandCraft)



A lifestyle for
the privileged few...



GOLF LINKS

NH-24, Ghaziabad

RERA Registration Number : UPRERAPRJ5633



* COMPLETION CERTIFICATE OBTAINED OF TOWER 1C,2C,3C,4C, POCKET P1(A),P2,P3,P4 & ZONAL SHOPPING-3 BEFORE RERA.

** FUTURE DEVELOPMENT WILL BE DONE IF THE LAND WILL BE PROVIDED TO LANDCRAFT DEVELOPERS PRIVATE LTD.

AREA STATEMENT
(PHASE - 2)

TYPE-1135, 2BHK + 2TOI. (638.090 SQ.FT.,59.28 SQ.M.)
TYPE-1405, 3BHK + 2TOI. (799.980 SQ.FT.,74.32 SQ.M.)
TYPE-1450, 3BHK + 2TOI. + DINNING (805.685 SQ.FT.,74.85 SQ.M.)
TYPE-1600, 3BHK + 3TOI. + DINNING + STORE (927.319 SQ.FT.,86.15 SQ.M.)
TYPE-1785, 3BHK + 3TOI. + DINNING (954.229 SQ.FT.,88.65 SQ.M.)
TYPE-2115, 3BHK + 4TOI. + STUDY + DINNING (1245.718 SQ.FT.,115.73 SQ.M.)
TYPE-2375, 4BHK + 3TOI./DRESS + DINNING (1389.632 SQ.FT.,129.10 SQ. M.)



Disclaimer : The imagery used on the brochures are indicative of style only, photographs of interiors, surrounding views and location may have been digitally enhanced or altered and do not represent actual views or surrounding views. These photographs are indicative only and the layout not to scale. 1 Sqm = 10.764 Sq. ft.

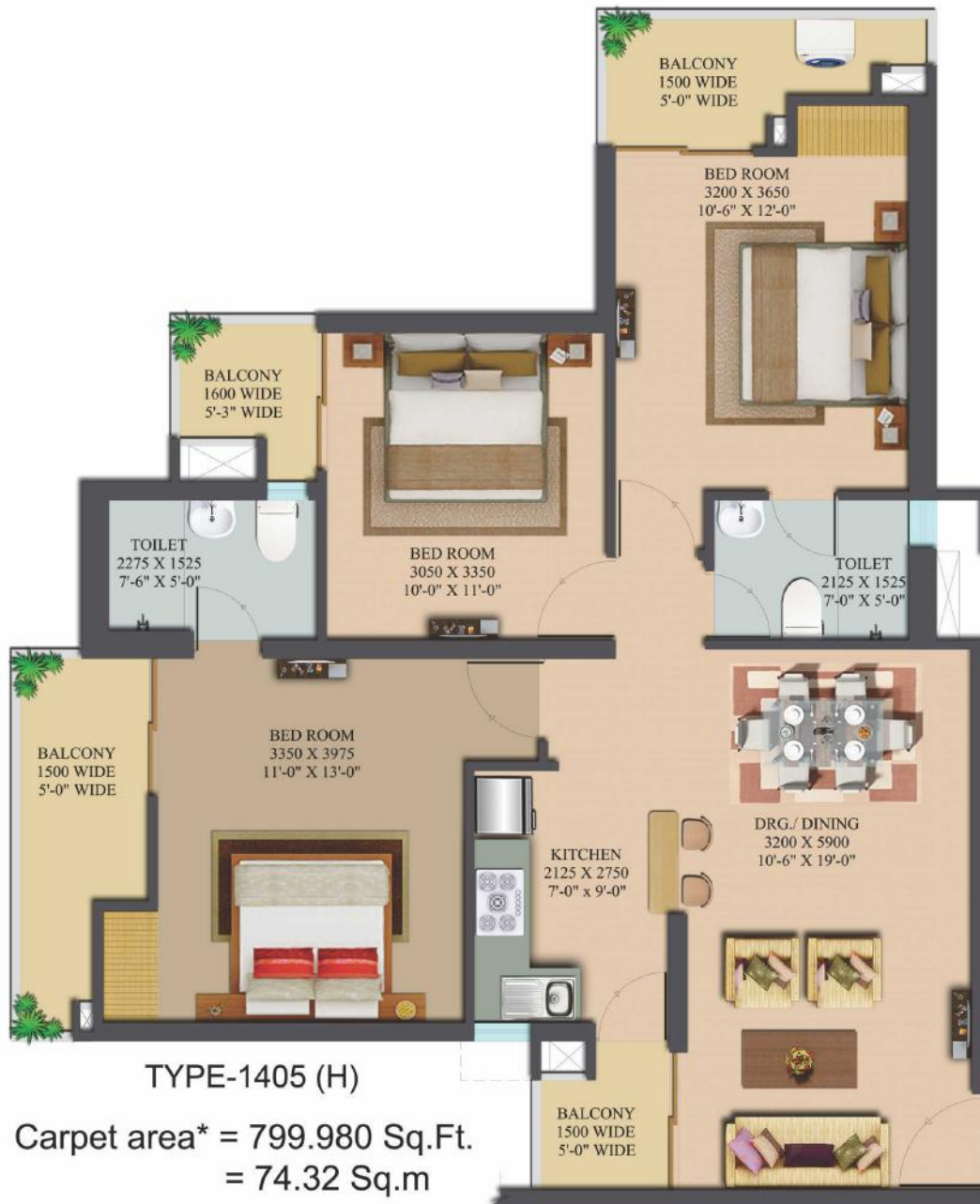


TYPE-1135 (G)

**Carpet area* = 638.090 Sq.Ft.
= 59.28 Sq.m**

2 Bedroom + 2 Toilet

*** Carpet area as defined in THE REAL ESTATE
(REGULATION AND DEVELOPMENT) ACT, 2016**



TYPE-1405 (H)

**Carpet area* = 799.980 Sq.Ft.
= 74.32 Sq.m**

3 Bedroom + 2 Toilet

* Carpet area as defined in THE REAL ESTATE (REGULATION AND DEVELOPMENT) ACT, 2016



TYPE-1450 (J)

**Carpet area* = 805.685 Sq.Ft.
= 74.85 Sq.m**

3 Bedroom + 2 Toilet

*** Carpet area as defined in THE REAL ESTATE
(REGULATION AND DEVELOPMENT) ACT,2016**



TOWER - 1B

TYPE-1450 (J)

**Carpet area* = 805.685 Sq.Ft.
= 74.85 Sq.m**

3 Bedroom + 2 Toilet

*** Carpet area as defined in THE REAL ESTATE
(REGULATION AND DEVELOPMENT) ACT,2016**



TYPE-1600 (K)

**Carpet area* = 927.319 Sq.Ft.
= 86.15 Sq.m**

3 Bedroom + 3 Toilet + Store

*** Carpet area as defined in THE REAL ESTATE
(REGULATION AND DEVELOPMENT) ACT,2016**



TYPE-1600 (K)

UNIT NO. 32 & 33 (TOWER-2A)

Carpet area* = 927.319 Sq.Ft.
= 86.15 Sq.m

3 Bedroom + 3 Toilet + Store

* Carpet area as defined in THE REAL ESTATE
(REGULATION AND DEVELOPMENT) ACT,2016



TYPE-1785 (L)

**Carpet area* = 954.229 Sq.Ft.
= 88.65 Sq.m**

3 Bedroom + 3 Toilet

*** Carpet area as defined in THE REAL ESTATE
(REGULATION AND DEVELOPMENT) ACT,2016**



TYPE-2115 (M)

**Carpet area* = 1245.718 Sq.Ft.
= 115.73 Sq.m**

3 Bedroom + 4 Toilet + Study

* Carpet area as defined in THE REAL ESTATE
(REGULATION AND DEVELOPMENT) ACT,2016

TYPE-2375 (N)
Carpet area* = 1389.632 Sq.Ft.
= 129.10 Sq.m
4 Bedroom + 3 Toilet

* Carpet area as defined in THE REAL ESTATE
(REGULATION AND DEVELOPMENT) ACT,2016



GOLFLINKS



COLUMBIA
ASIA
HOSPITAL
GHAZIABAD

TO HARIDWAR
NH-24 EXPRESS WAY
FROM DELHI

WAVE CITY

GT Road

SECTOR 63

INDIRAPURAM

ELECTRONIC CITY, NOIDA

**AKSHAR DHAM
TEMPLE**



YAMUNA RIVER

RING ROAD



GARG GROUP



LandCraft Developers Pvt. Ltd.

Corporate Office: Golf Links, NH-24, Near Columbia Hospital, Village Mehrauli, Paragana Dasna, Tehsil & District Ghaziabad, Uttar Pradesh - 201002

T +91 120 4185000 • F +91 120 4185005 | Email : info@landcraft.in | www.landcraft.in

Registered Office : Parmesh Corporate Towers, 309, 3rd Floor, Plot No. 13 Karkardooma Community Centre, Delhi 110092.

GolfLinks Marketing: 888 2131 010 • SMS 'LGL' to 56161

CIN: U45201DL2005PTC132131

RERA Registration Number : UPRERAPRJ5633