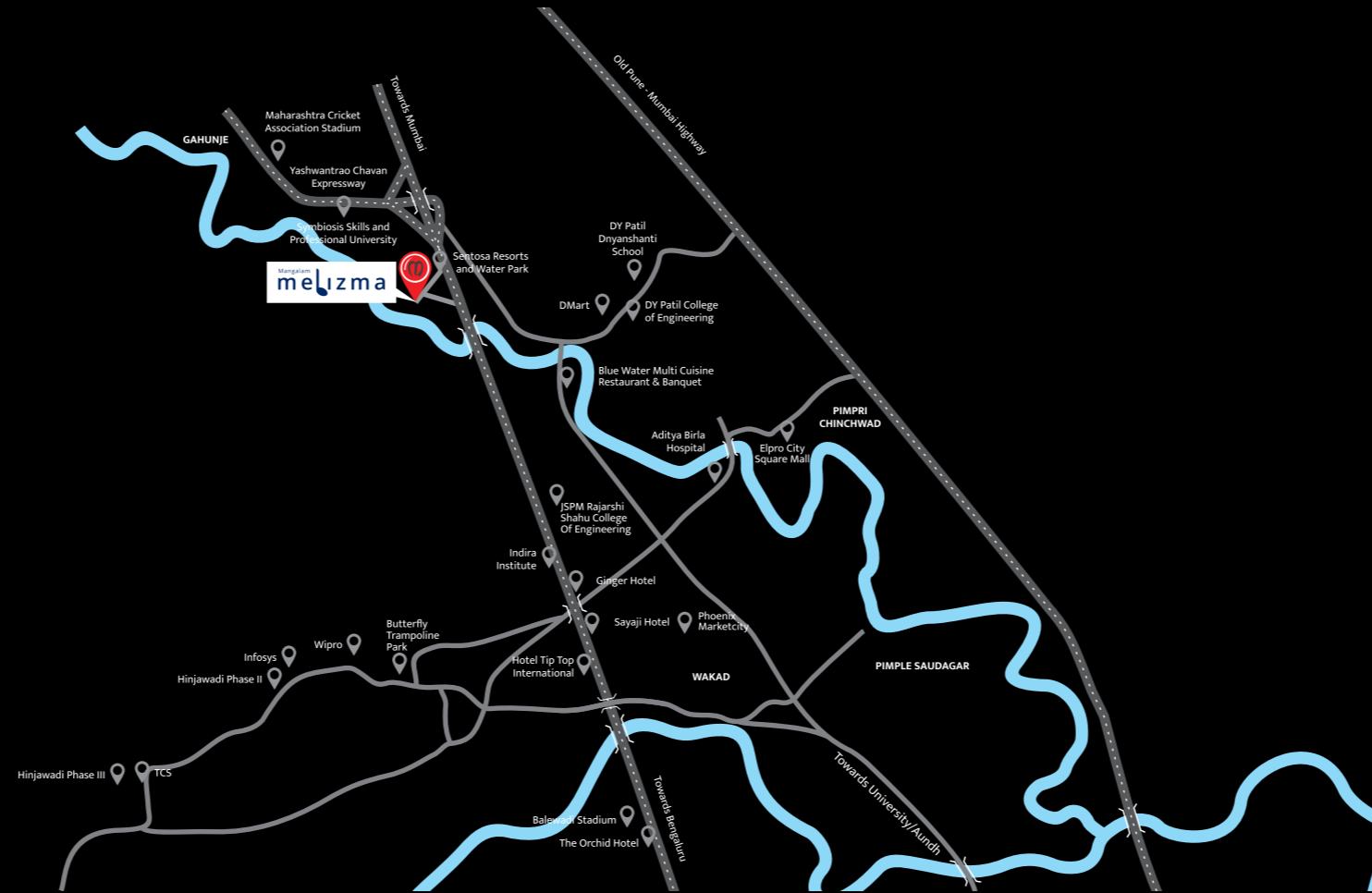




## Location



Map not to scale

### AMENITIES

- Artists' Corner:**
  - Feature Wall · Conversation Pit · Wall of Ascent · Art Plaza
  - Graffiti Wall · Kids' Corner · Sculpture Pedestal
- Green Rhythm:**
  - Walkway · Porch · Grassland · Deck · Hammock Garden
  - Plantation in Grating · Driveway Pattern
- Cultural Arena:**
  - Celebration Area · Performance Stage
- Aqua Blues:**
  - Poolside Shower · Swimming Pool · Water Cascade
- World of Fusion:**
  - Flag Hoisting Area · Security Cabin · Bus/Cab Pickup Point
  - Grand Entrance Gate · Parcel Pickup Point · Convenience Shopping
- Timeless Classical:**
  - Senior Sitout · Universal Court · Parents' Sitout · Courtyard
  - Pavilion seating · Sit-out
- Rock & Soul:**
  - Outdoor Yoga · Fitness Trail · Jogging Track
  - Mangalam Fitness Centre · Dhyana Mandir

### SKY-LEVEL AMENITIES

- Board Room
- Co-working Space
- Senior Citizens' Sit-out
- Chitchat Zone
- Stargaze
- Sky Deck
- Sky Yoga
- Book Café
- Board Games
- Skywalk
- Party Lawn
- Seating Lounge
- Barbeque & Serving Counter
- Swing Seating
- Viewing Deck

### UTILITY AMENITIES

- 3-tier Security · Garbage Chute · Solar Water Heater · Rain Water Harvesting · Lightening Arrester · Power Backup in Common Area
- Waiting Lounge · Fire Fighting System · MDU - DTH Service · CCTV Surveillance · Common EV Point · Video Door Phone · STP



Site: S.No. 96, Behind Sentosa Resorts, Kiwale, Pune - 412 101  
 Office: 1<sup>st</sup> Floor, Life Ville, Above Raymond's Shop, PK Chowk,  
 Pimple Saudagar, Pune - 411 027 ☎ 86 44 99 11 88

MAHARERA REG. NO: Mangalam Melizma - P52100051095 | Available at website : <https://maharera.mahaonline.gov.in/>

DISCLAIMER: This brochure is purely conceptual and not a legal offering. The company reserves the right to add, delete or alter any details and any specifications and floor plans in its endeavor to make improvements as and when required.

3dotsdesign.in



Mangalam  
**melizma**  
 2 & 3 BHK UPSCALE HOMES AT KIWALE

Melodious life,  
 inside out!



The little joys of being with your loved ones are the ones that compose a melodious life and cherishable memories for life. At Mangalam Melizma, you get to experience a life that is a fusion of comfort, convenience and connectivity. Strategically located close to Pune-Mumbai Expressway, these 2 & 3 BHK upscale homes are built with state-of-the-art amenities that are in sync with your lifestyle needs and close to everything you need. Come, experience a melodious lifestyle at Mangalam Melizma.

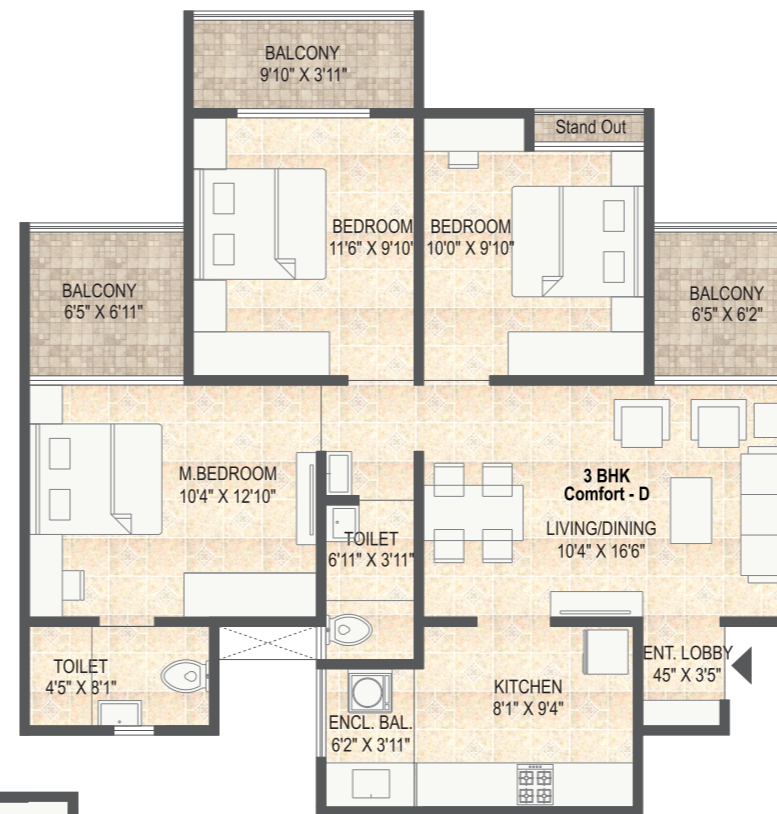


◀ TYPICAL  
2 BHK - GRAND

CARPET AREA	BALCONY AREA	TOTAL CARPET AREA	
SQ.MT.	SQ.MT.	SQ.MT.	SQ.FT.
58.63	9.85	68.48	737

TYPICAL ▶  
3 BHK - COMFORT

CARPET AREA	BALCONY AREA	TOTAL CARPET AREA	
SQ.MT.	SQ.MT.	SQ.MT.	SQ.FT.
69.70	14.09	83.79	902



◀ TYPICAL  
3 BHK - GRAND

CARPET AREA	BALCONY AREA	TOTAL CARPET AREA	
SQ.MT.	SQ.MT.	SQ.MT.	SQ.FT.
81.63	9.42	91.04	980



## SPECIFICATIONS



### STRUCTURE

- Earthquake resistant RCC framed structure with 5 inch fly ash bricks / AAC blocks



### PLASTER

- External double coat sand faced plaster
- Internal gypsum / POP plaster



### PAINTING

- Internal walls in oil bond distemper
- External walls in acrylic paint



### TOILET

- Decorative glazed tiles of size 600 x 1200 mm up to lintel level
- C. P Fitting of Grohe or equivalent make
- Sanitary wares of Hindware or equivalent make
- Provision for exhaust fan & geyser



### KITCHEN

- Granite/Quartz platform with SS sink of Niral or equivalent make
- Dado tiles of size 600 x 1200 mm up to lintel level above platform
- Provision for Water purifier, Exhaust fan etc.
- Provision for washing machine in dry balcony



### ELECTRICAL

- Concealed fire resistant copper wiring of Anchor or equivalent make
- Modular switches of Legrand or equivalent make
- Provision for AC in master bedroom
- Provision for Inverter
- Provision for TV point in living room



### FLOORING

- 600 X 1200mm Vitrified tiles in all rooms
- 600 X 600mm Anti-skid tiles in all bathrooms
- Anti-skid tiles for dry balcony & balconies



### DOORS

- Main Door - Good quality laminated flush door with necessary fitting
- Other Doors - Good quality doors with necessary fitting



### WINDOWS

- 3 track powder coated aluminium sliding windows with mosquito net
- MS safety grills for all windows



### ELEVATOR/LIFT

- Kone or equivalent make