



**EVERY SQUARE FEET IS  
WORTH ITS WEIGHT IN GOLD**



## A NEW DIMENSION OF LIVING

*Urban Tree has created a distinct name for itself and is known for its penchant for homes that are consistently international in quality.*

*With meticulous planning and detailed architectural nuances, we are committed to delivering the finest quality of life. This has empowered us to refine a customer-centric approach with the highest degree of integrity and transparency.*



DIMENSIONS UNLIMITED

## THE URBAN TREE ADVANTAGE



*Luxury homes in prime locations,  
at affordable prices.*



*Quality uncompromised.*



*Green homes  
for healthier living.*



*100% transparency.  
No hidden charges.*



*Monthly newsletter  
with regular updates.*



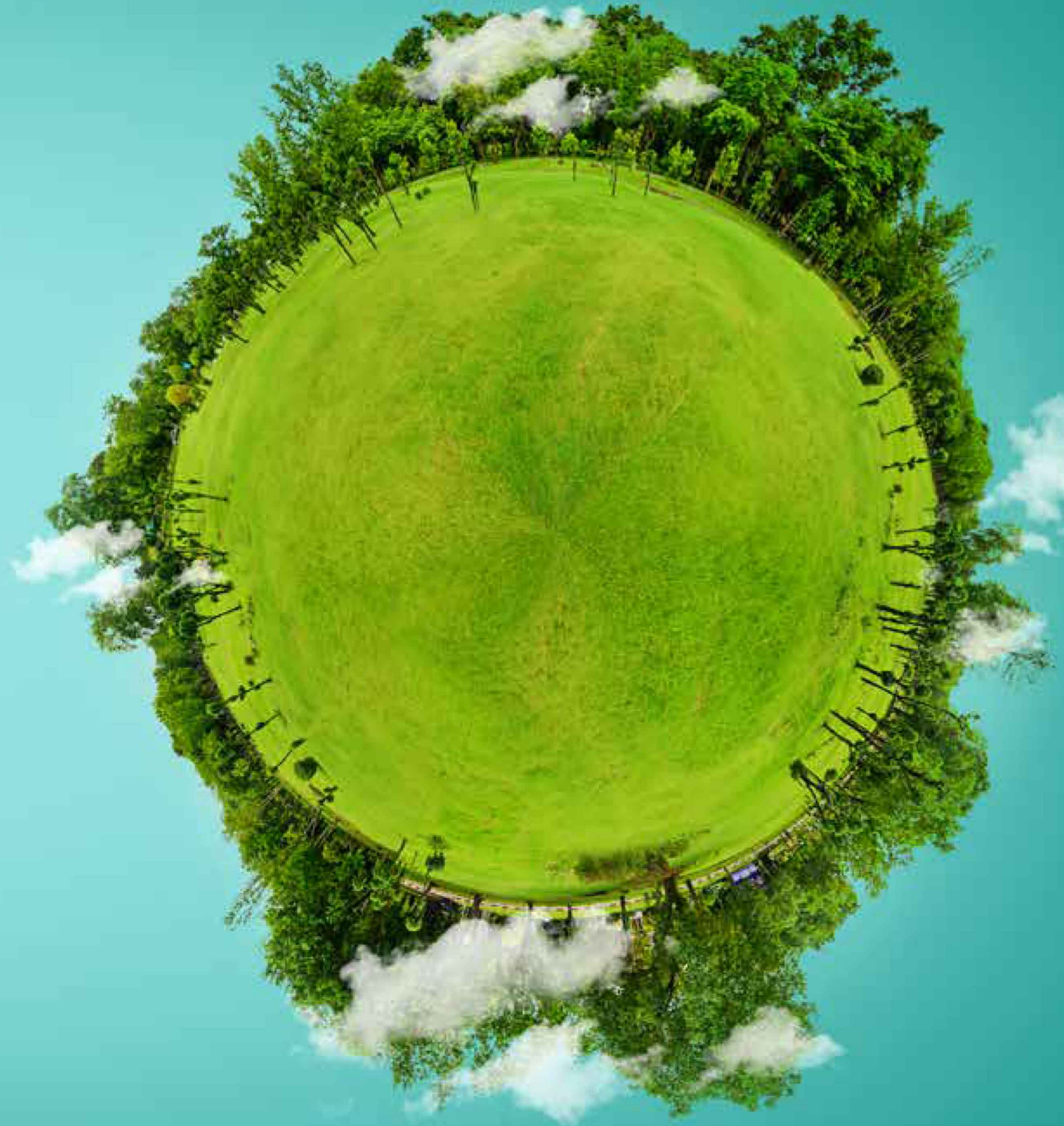
*Regular customer  
meets every quarter.*



*We pay, if we delay.*



*2,000+ delighted  
customers.*





**AN APPRECIATING ASSET,  
YOU'LL APPRECIATE FOREVER**

*Located in the heart of tomorrow, Goldmine by Urban Tree, features 64 plots spread across a 2.4-acre land parcel. The development comes with thoughtfully planned layouts, designed to create a community of like-minded individuals.*

*With land being an ever-appreciating investment, there is no better gift you can give your family or theirs.*

PVR | URBAN TREE  
**GOLDMINE**  
PARUTHIPATTU | AVADI

**CONVENIENTLY CLOSE  
TO EVERYWHERE**

*An investment worth better than gold is a plot, only in Avadi. Avadi is one of Chennai's oldest as well as fast-appreciating localities with unmatched connectivity. Avadi Municipality is now classified as a Special Grade Municipality.*

*It boasts close proximity to infrastructural developments such as IT Parks and Service Sector firms; along with schools, colleges, hospitals and entertainment hubs.*



## AERIAL VIEW ✨



## ACTUAL SITE IMAGE ✨



*All your dreams and desires can be fulfilled when you invest in the right developer, the right property and the right location.*

# WHY BUY PLOT?



*Enjoy multifold returns  
on a secure investment*



*Become a proud  
land owner*



*Only property investments  
will get you loans at the  
lowest interest rates*



*An investment to secure your  
family's future.*

*An investment for  
your child's future.*

*An investment for your  
future retirement.*



*Build customised  
homes based on your  
tastes and preferences*

## SCOPE OF APPRECIATION

*At Goldmine, we're always looking towards a promising tomorrow. Our greatest satisfaction is in giving our customers a solid investment opportunity to build a personalised future, that seamlessly seems like a rewarding choice.*

*As of 2020, the price has quadrupled from the early 2000's.*



**AS PER OUR MARKET STUDY**



**Goldmine Advantages**



*Clear title*



*24/7 security*



*EB connection available*



*Surrounded by reputed schools, colleges and hospitals*



*CMDA & RERA approved plots*



*Assistance with construction of your dream home*



*Copious sweet ground water*



*Solar powered streetlights*



*Blacktop roads*



*Plot range  
725-3885 sq. ft*



*Lush green landscaping*



*Storm water drain*

## LOCATION ADVANTAGES



**1 MINUTE**  
Poonamallee-Avadi  
Highway Road



**5 MIN**  
from proposed  
ponnamalle metro  
and Avadi



**10 MIN**  
from Avadi  
Railway Station



**15 MIN**  
from Ambattur  
industrial estate



**30 MIN**  
from Koyambedu

### School

*Vellamal Vidhaya mandir*

*Opp to Gold mine*

*Vellammal metric hr sec school*

*500 mts*

*Mahalashmi Vidya mandir*

*850 mts*

*Maharishi vidya mandir*

*2 km*

*JGVV School*

*1 km*

*Sudharshanam Vidhyashram*

*2 km*

### Hospital

*Panimalar Multi Spl Hospital & University*

*9.5 km*

*Saveetha Dental College*

*5.3 km*

*ACS Medical College*

*5.3 km*

*Arvind Eye Hospital*

*5.3 km*

*Apollo Specitaly Hospital vanagaram*

*6 km*

### COLLEGE

*Mahalakshmi Womens Arts & Science College*

*850 mts*

*S.A Polytechnic college*

*750 mts*

*S.A Engerning College*

*3.5 km*

*S.A College of Arts & Science*

*3.2 km*

*Hindhu College*

*5 km*

# LOCATION MAP



GoldMine by Urban Tree Enclave, Paruthipattu Road, (Opp. Velammal Vidhayala) Sundarasholavaram, Thiruverkadu, Chennai - 600077.



AREA STATEMENT			
Plot No	Area in Sqft	Plot No	Area in Sqft
1	863	33	807
2	977	34	775
3	2667	35	985
4	1261	36	1051
5	1103	37	1051
6	1103	38	1051
7	1225	39	1051
8	831	40	1810
9	930	41	1598
10	904	42	1055
11	980	43	1055
12	980	44	1055
13	980	45	1055
14	976	46	818
15	1046	47	725
16	1046	48	1050
17	1046	49	1050
18	1046	50	1050
19	1603	51	1050
20	1317	52	1050
21	1150	53	1090
22	1206	54	1104
23	1046	55	1123
24	1114	56	985
25	1564	57	743
26	3885	58	931
27	1488	59	1124
28	1213	60	1285
29	1213	61	1145
30	807	62	725
31	807	63	1052
32	807	64	906



DIMENSIONS UNLIMITED

A JOINT INITIATIVE OF  
**amberland**

PVR | URBAN TREE  
**GOLDMINE**  
PARUTHIPATTU | AVADI

RERA NO : TN/02/LAYOUT/212/2021 | DATED 08.07.2021 | WWW.RERA.TN.GOV.IN



A JOINT INITIATIVE OF



DIMENSIONS UNLIMITED



OUR BANKERS



[www.urbantreehomes.com](http://www.urbantreehomes.com)

**Call: 6600 5550**

DISCLAIMER: This leaflet is conceptual and not a legal offering. Visual representations such as layout plans, finishes, illustrations, pictures, photographs, and drawings herein are artist's representations.

RERA NO : TN/02/LAYOUT/212/2021 | DATED 08.07.2021 | WWW.RERA.TN.GOV.IN