



mantri

mantri
COURTYARD

**ABSOLUTE
FREEDOM**



mantri

Home is where
your story
begins...

Innovation-led, future-focused Mantri Developers Pvt. Ltd. established in 1999 by Mr. Sushil Mantri, has been the pioneering force behind the rapidly changing skyline of South India, with developments that span the Residential, Retail, Commercial, Education & Hospitality Sectors.

Under residential segment, Mantri Developers offers Villas, Row Houses, Super Luxury, Luxury & Semi-Luxury Apartments. Mantri Developers is committed towards developing ecologically sustainable projects, with a strong emphasis on environmental management and safety standards.



This image is an artistic representation only.

mantri *COURTYARD*

Mantri Courtyard, Row Villas with private green space that fill joy in your life. Now you get back home to a private outdoor space, a space that fills you up with happiness, a space where you can recharge, refresh and rebalance yourself. Find that space at Mantri Courtyard and rediscover the Joy of Living.

Mantri Courtyard now launches its new phase i.e. the 4th Parcel. Limited to just 91 Row Villas, each unit comes with its private garden.



MANTRI COURTYARD

This image is an artistic representation only.



PROJECT HIGHLIGHTS

Row Villas designed with parking in the Ground Floor, thus eliminating vehicular movement in front of the Row Villas

•

80+ Families already living in Parcel 1, 2 & 3

•

Large well equipped clubhouse

•

Homes with abundance of Natural light & ventilation

•

2 Car parking slots with each Row Villa

•

3 & 4 BHK Row Villas



This image is an artistic representation only.

LANDSCAPE & AMENITIES

LEGEND

1. Entry/Exit
2. Security Cabin
3. Driveway
4. Private Garden
5. Services



Internal Walkway



This image is an artistic representation only.

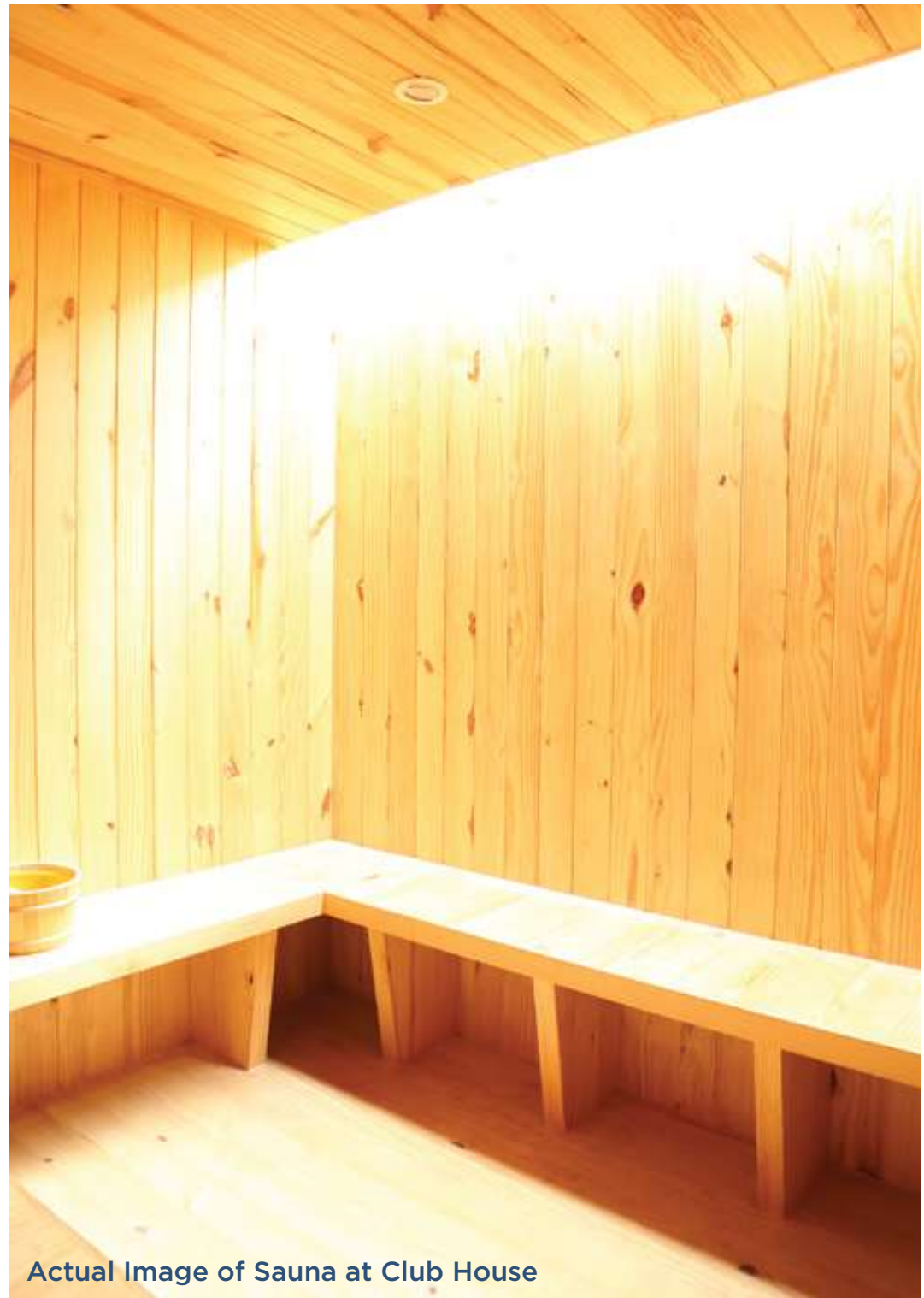
Garden View



This image is an artistic representation only.



Actual Image of Squash Court at Club House



Actual Image of Sauna at Club House



Actual Image of Swimming Pool



Actual Image of Gym



Actual Image of Board & Card Game Room



Actual Image of Billiards Room



Actual Image of Community Hall



Actual Image of Mini Theatre

WEST FACING FLOOR PLAN



This image is an artistic representation only.



| SBUA | Carpet Area | Terrace | Garden |
|---------|-------------|---------|--------|
| 2550sft | 2017sft | 752sft | 176sft |



WEST FACING | **4BHK** | **GROUND FLOOR**

mantri
COURTYARD



| SBUA | Carpet Area | Terrace | Garden |
|---------|-------------|---------|--------|
| 2550sft | 2017sft | 752sft | 176sft |

WEST FACING |
4BHK | FIRST FLOOR

mantri
COURTYARD

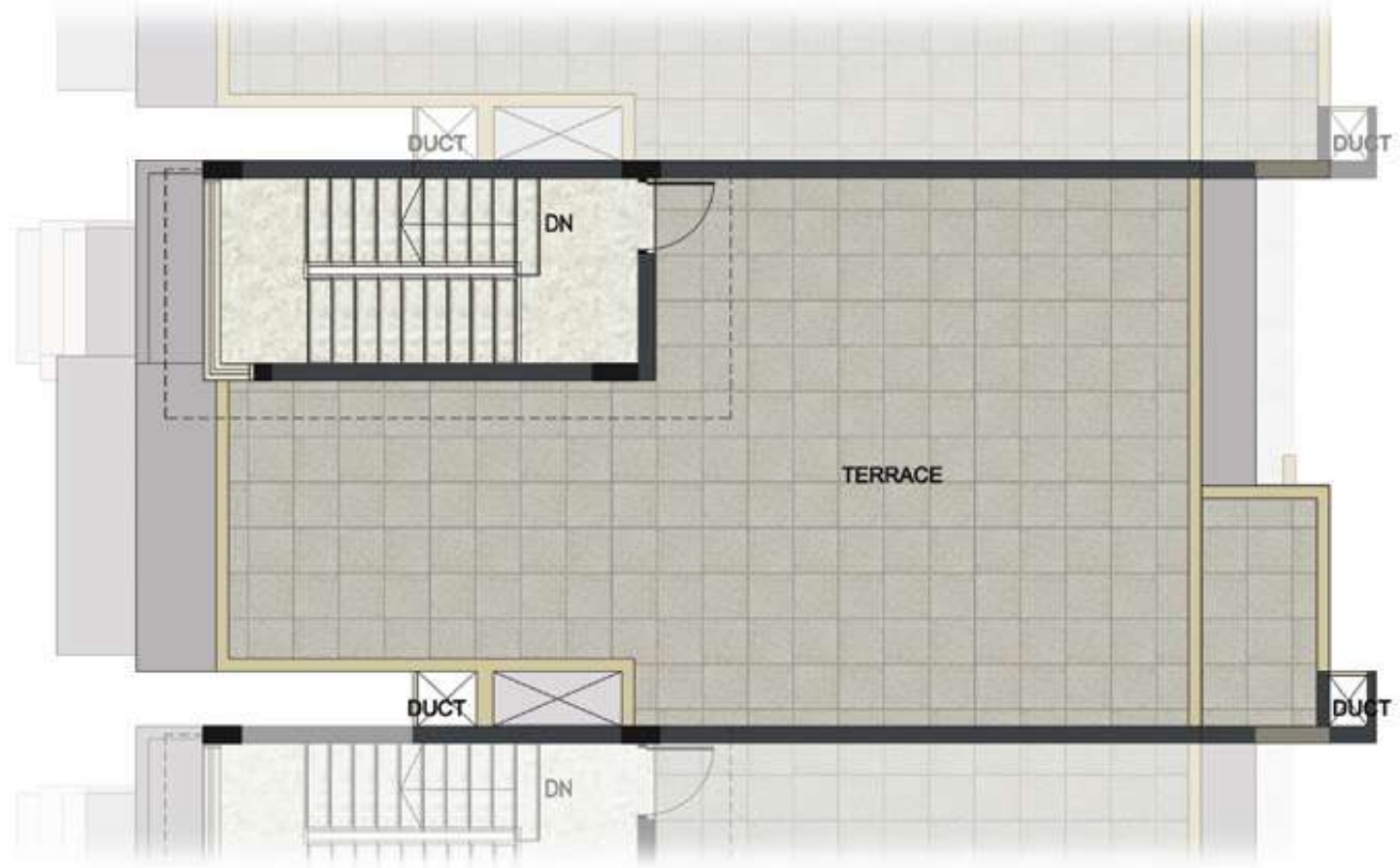


| SBUA | Carpet Area | Terrace | Garden |
|---------|-------------|---------|--------|
| 2550sft | 2017sft | 752sft | 176sft |

WEST FACING |
4BHK | SECOND FLOOR

mantri
COURTYARD





| SBUA | Carpet Area | Terrace | Garden |
|---------|-------------|---------|--------|
| 2550sft | 2017sft | 752sft | 176sft |

WEST FACING
4BHK | TERRACE FLOOR

mantri
COURTYARD

EAST FACING FLOOR PLAN





| SBUA | Carpet Area | Terrace | Garden |
|---------|-------------|---------|--------|
| 2475sft | 1953sft | 756sft | 176sft |

EAST FACING TYPE 1 |
3 BHK | **GROUND FLOOR**





| SBUA | Carpet Area | Terrace | Garden |
|---------|-------------|---------|--------|
| 2475sft | 1953sft | 756sft | 176sft |

EAST FACING TYPE 1
3 BHK | FIRST FLOOR

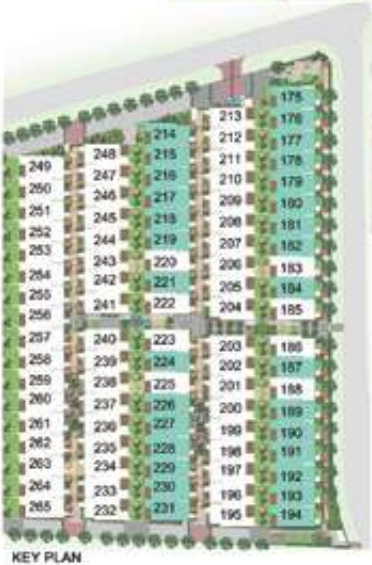
mantri
COURTYARD

KEY PLAN

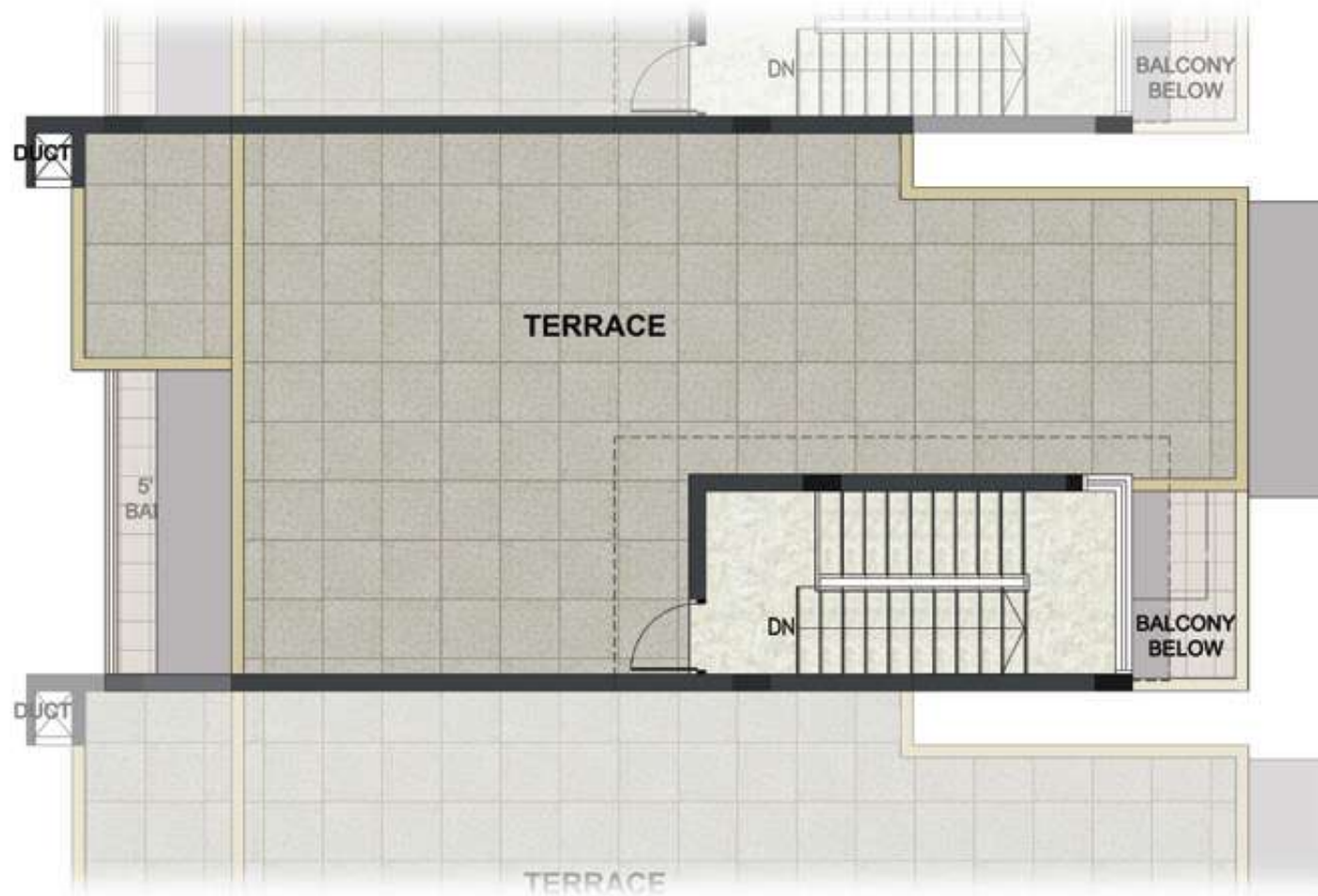


| SBUA | Carpet Area | Terrace | Garden |
|---------|-------------|---------|--------|
| 2475sft | 1953sft | 756sft | 176sft |

EAST FACING TYPE 1
3 BHK | SECOND FLOOR



KEY PLAN



| SBUA | Carpet Area | Terrace | Garden |
|---------|-------------|---------|--------|
| 2475sft | 1953sft | 756sft | 176sft |

EAST FACING TYPE 1 |
3 BHK | TERRACE |

mantri
COURTYARD





| SBUA | Carpet Area | Terrace | Garden |
|---------|-------------|---------|-------------|
| 2515sft | 1986sft | 754sft | 380-399*sft |

*Varies as per unit

EAST FACING TYPE 2A
 3 BHK | GROUND FLOOR

mantri
COURTYARD





| SBUA | Carpet Area | Terrace | Garden |
|---------|-------------|---------|-------------|
| 2515sft | 1986sft | 754sft | 380-399*sft |

*Varies as per unit

EAST FACING TYPE 2A |
3 BHK | **FIRST FLOOR** |

mantri
COURTYARD

KEY PLAN

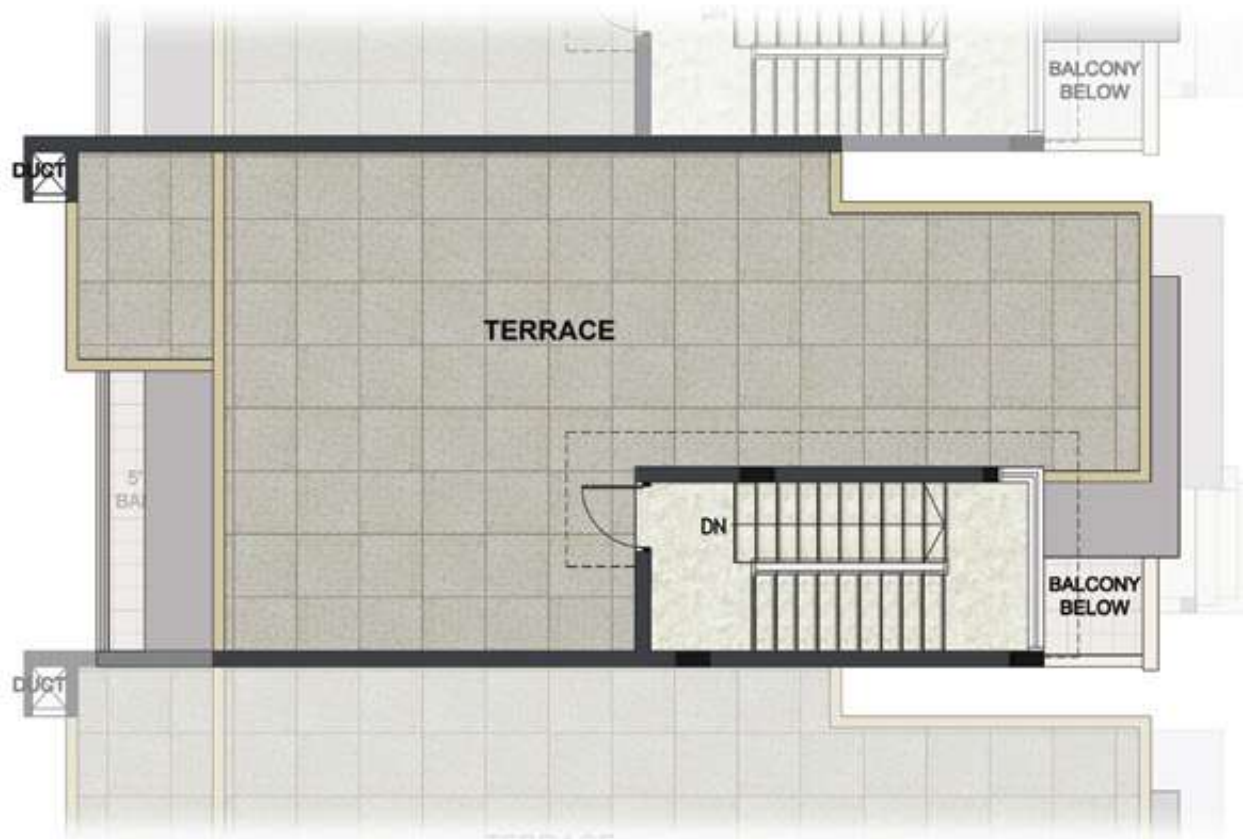


| SBUA | Carpet Area | Terrace | Garden |
|---------|-------------|---------|-------------|
| 2515sft | 1986sft | 754sft | 380-399*sft |

*Varies as per unit

EAST FACING TYPE 2A
3 BHK | SECOND FLOOR

mantri
COURTYARD



| SBUA | Carpet Area | Terrace | Garden |
|---------|-------------|---------|-------------|
| 2515sft | 1986sft | 754sft | 380-399*sft |

*Varies as per unit

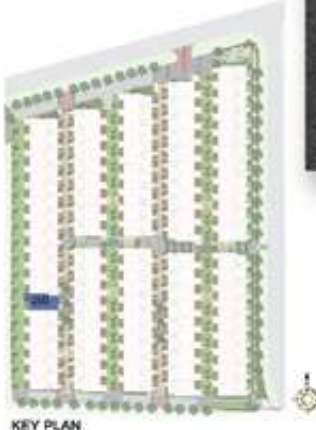
EAST FACING TYPE 2A
3 BHK | TERRACE

mantri
COURTYARD



| SBUA | Carpet Area | Terrace | Garden |
|---------|-------------|---------|--------|
| 2515sft | 1986sft | 754sft | 389sft |

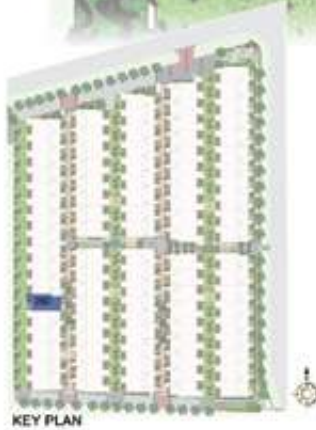
EAST FACING TYPE 2B |
3 BHK | GROUND FLOOR



KEY PLAN

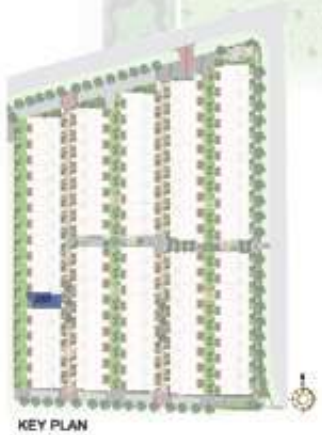


| SBUA | Carpet Area | Terrace | Garden |
|---------|-------------|---------|--------|
| 2515sft | 1986sft | 754sft | 389sft |



EAST FACING TYPE 2B |
3 BHK | **FIRST FLOOR**

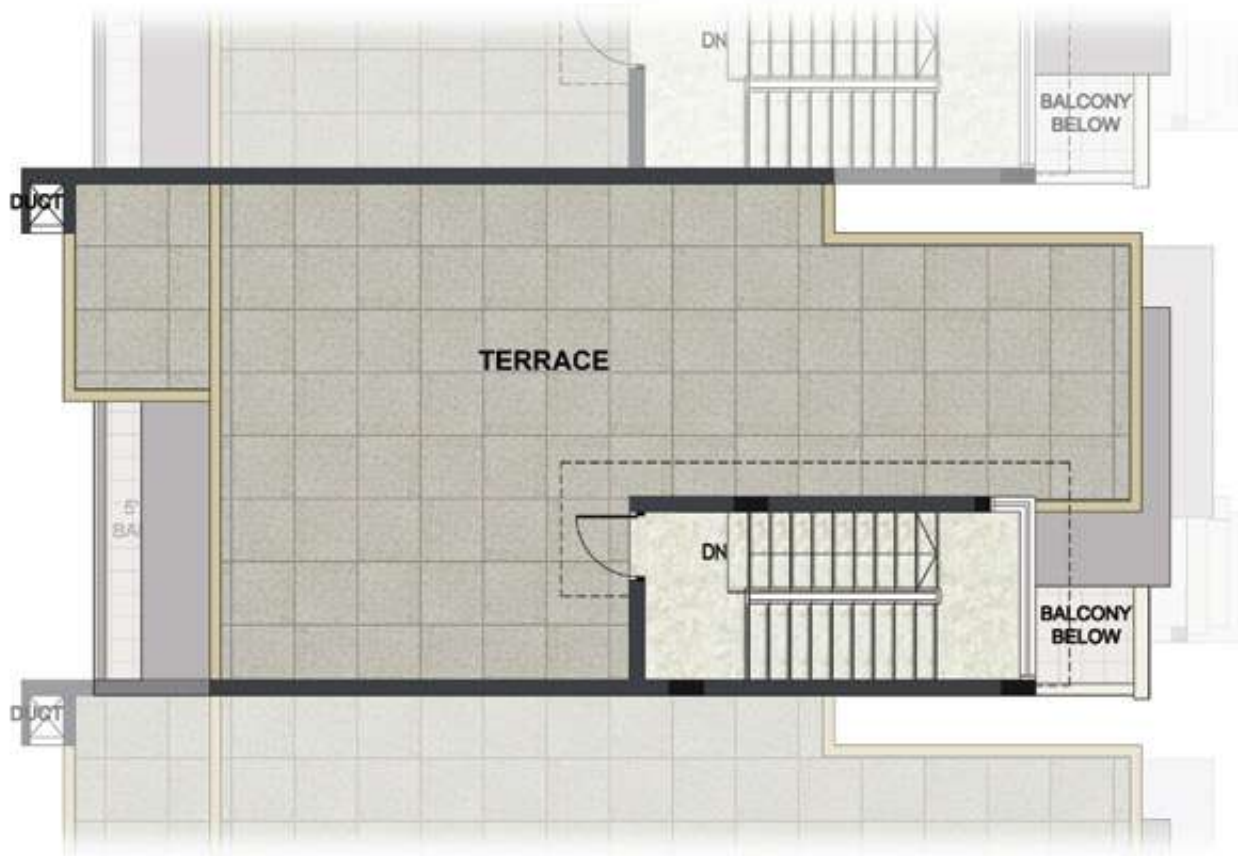




| SBUA | Carpet Area | Terrace | Garden |
|---------|-------------|---------|--------|
| 2515sft | 1986sft | 754sft | 389sft |

EAST FACING TYPE 2B
3 BHK | SECOND FLOOR





| SBUA | Carpet Area | Terrace | Garden |
|---------|-------------|---------|--------|
| 2515sft | 1986sft | 754sft | 389sft |

EAST FACING TYPE 2B |
 3 BHK | TERRACE

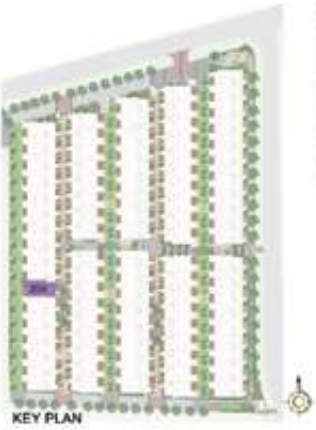
mantri
COURTYARD





| SBUA | Carpet Area | Terrace | Garden |
|---------|-------------|---------|--------|
| 2615sft | 2079sft | 754sft | 384sft |

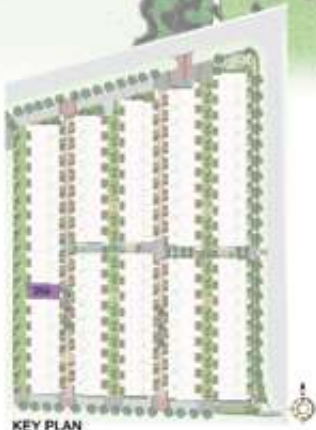
EAST FACING TYPE 2C
 4 BHK | GROUND FLOOR





| SBUA | Carpet Area | Terrace | Garden |
|---------|-------------|---------|--------|
| 2615sft | 2079sft | 754sft | 384sft |

EAST FACING TYPE 2C
 4 BHK | FIRST FLOOR



KEY PLAN

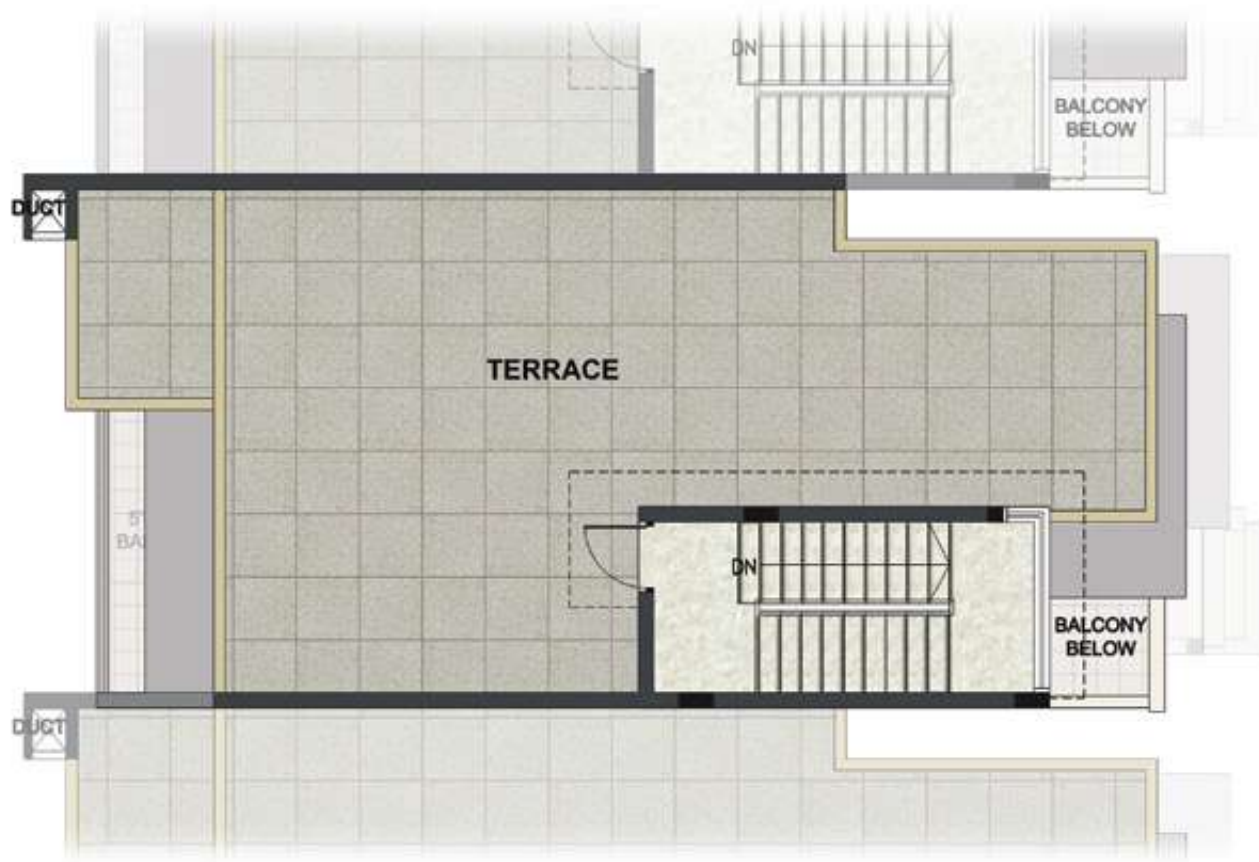


| SBUA | Carpet Area | Terrace | Garden |
|---------|-------------|---------|--------|
| 2615sft | 2079sft | 754sft | 384sft |

EAST FACING TYPE 2C
 4 BHK | SECOND FLOOR

mantri
COURTYARD

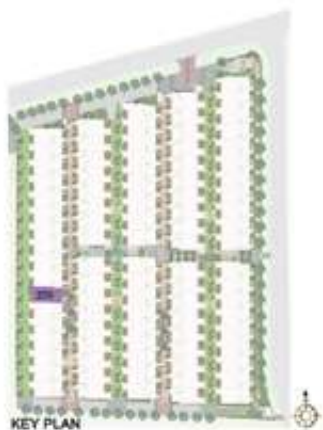




| SBUA | Carpet Area | Terrace | Garden |
|---------|-------------|---------|--------|
| 2615sft | 2079sft | 754sft | 384sft |

EAST FACING TYPE 2C
4 BHK | TERRACE

mantri
COURTYARD





| SBUA | Carpet Area | Terrace | Garden |
|---------|-------------|---------|-------------|
| 2615sft | 2079sft | 754sft | 366-392*sft |

*Varies as per unit

EAST FACING TYPE 2D
 4 BHK | GROUND FLOOR

mantri
COURTYARD

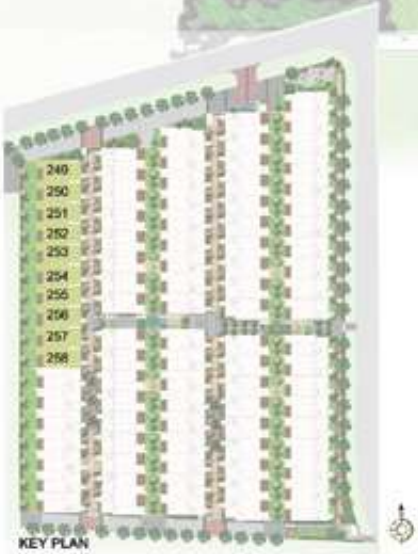


| SBUA | Carpet Area | Terrace | Garden |
|---------|-------------|---------|-------------|
| 2615sft | 2079sft | 754sft | 366-392*sft |

*Varies as per unit

EAST FACING TYPE 2D |
4 BHK | FIRST FLOOR

mantri
COURTYARD



| SBUA | Carpet Area | Terrace | Garden |
|---------|-------------|---------|-------------|
| 2615sft | 2079sft | 754sft | 366-392*sft |

*Varies as per unit

EAST FACING TYPE 2D
4 BHK | SECOND FLOOR





| SBUA | Carpet Area | Terrace | Garden |
|---------|-------------|---------|-------------|
| 2615sft | 2079sft | 754sft | 366-392*sft |

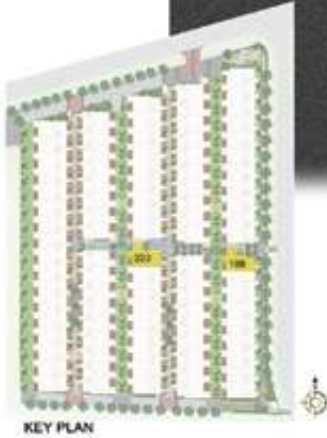
*Varies as per unit

EAST FACING TYPE 2D
4 BHK | TERRACE

mantri
COURTYARD



| | | | |
|---------|-------------|---------|--------|
| SBUA | Carpet Area | Terrace | Garden |
| 2595sft | 2041sft | 869sft | 176sft |

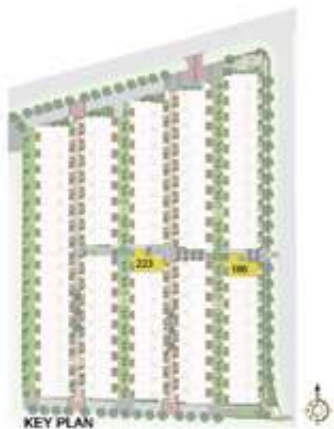


EAST FACING CONNECTING UNIT TYPE 3A |
3 BHK | **GROUND FLOOR**





| SBUA | Carpet Area | Terrace | Garden |
|---------|-------------|---------|--------|
| 2595sft | 2041sft | 869sft | 176sft |



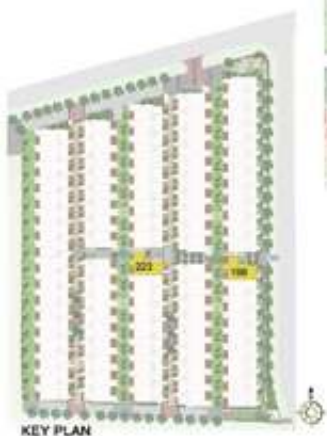
EAST FACING CONNECTING UNIT TYPE 3A |
3 BHK | **FIRST FLOOR**





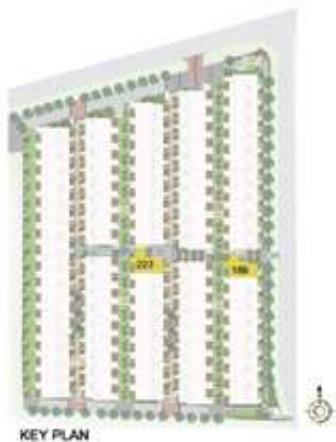
| SBUA | Carpet Area | Terrace | Garden |
|---------|-------------|---------|--------|
| 2595sft | 2041sft | 869sft | 176sft |

EAST FACING CONNECTING UNIT TYPE 3A |
3 BHK | **SECOND FLOOR**



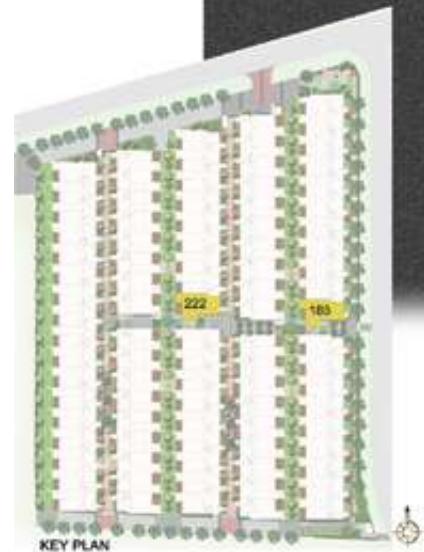


| SBUA | Carpet Area | Terrace | Garden |
|---------|-------------|---------|--------|
| 2595sft | 2041sft | 869sft | 176sft |



EAST FACING CONNECTING UNIT TYPE 3A |
3 BHK | **TERRACE FLOOR**





| SBUA | Carpet Area | Terrace | Garden |
|---------|-------------|---------|--------|
| 2585sft | 2041sft | 858sft | 176sft |

EAST FACING CONNECTING UNIT TYPE 3B |
 3 BHK | GROUND FLOOR

mantri
COURTYARD



| SBUA | Carpet Area | Terrace | Garden |
|---------|-------------|---------|--------|
| 2585sft | 2041sft | 858sft | 176sft |



EAST FACING CONNECTING UNIT TYPE 3B | 3 BHK | FIRST FLOOR





| SBUA | Carpet Area | Terrace | Garden |
|---------|-------------|---------|--------|
| 2585sft | 2041sft | 858sft | 176sft |



EAST FACING CONNECTING UNIT TYPE 3B | **3 BHK** | **SECOND FLOOR**

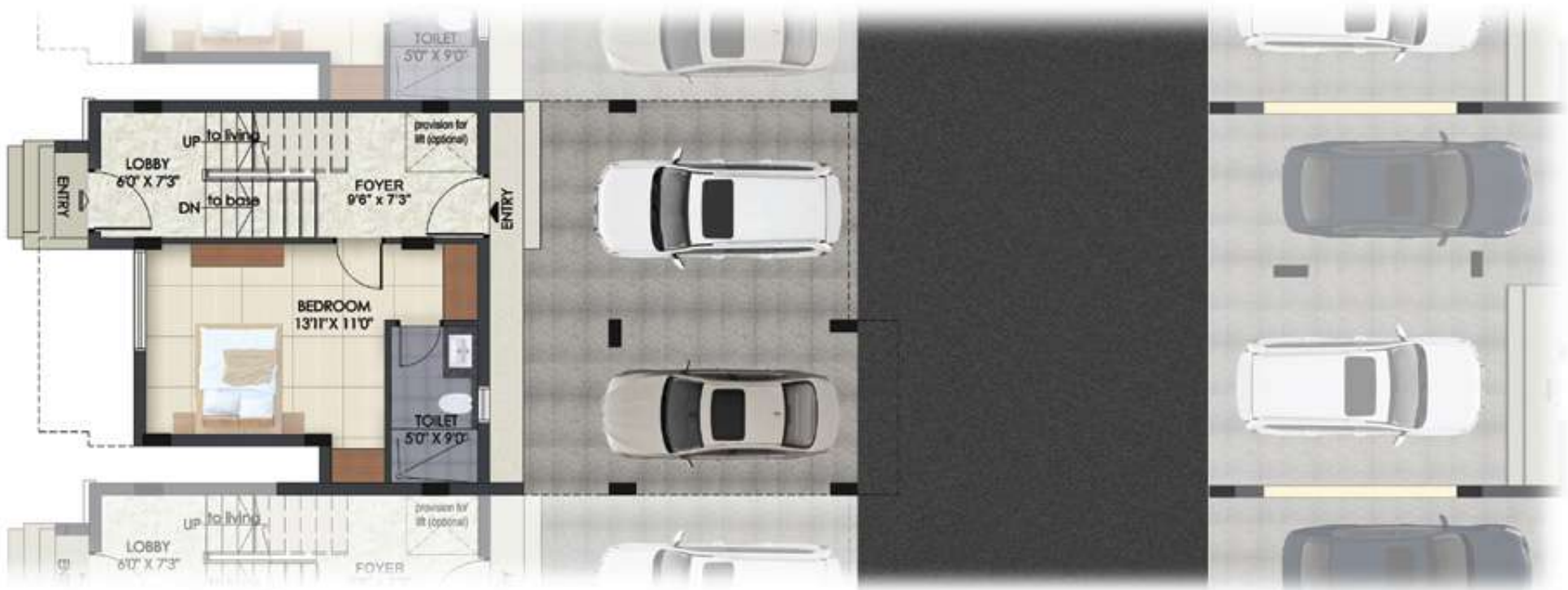




| SBUA | Carpet Area | Terrace | Garden |
|---------|-------------|---------|--------|
| 2585sft | 2041sft | 858sft | 176sft |

EAST FACING CONNECTING UNIT TYPE 3B |
3 BHK | **TERRACE**

manTRI
COURTYARD



| SBUA | Carpet Area | Terrace | Garden |
|---------|-------------|---------|--------|
| 2630sft | 2087sft | 828sft | 176sft |

WEST FACING CONNECTING UNIT TYPE 4A |
 4 BHK | GROUND FLOOR

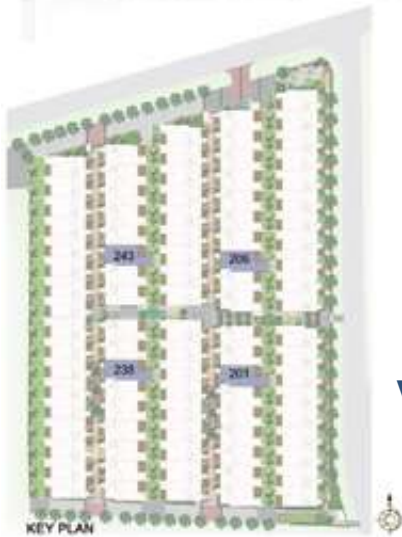




| SBUA | Carpet Area | Terrace | Garden |
|---------|-------------|---------|--------|
| 2630sft | 2087sft | 828sft | 176sft |

WEST FACING CONNECTING UNIT TYPE 4A |
4 BHK | **FIRST FLOOR**

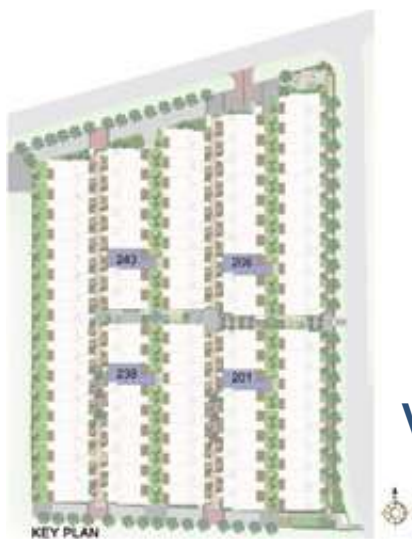
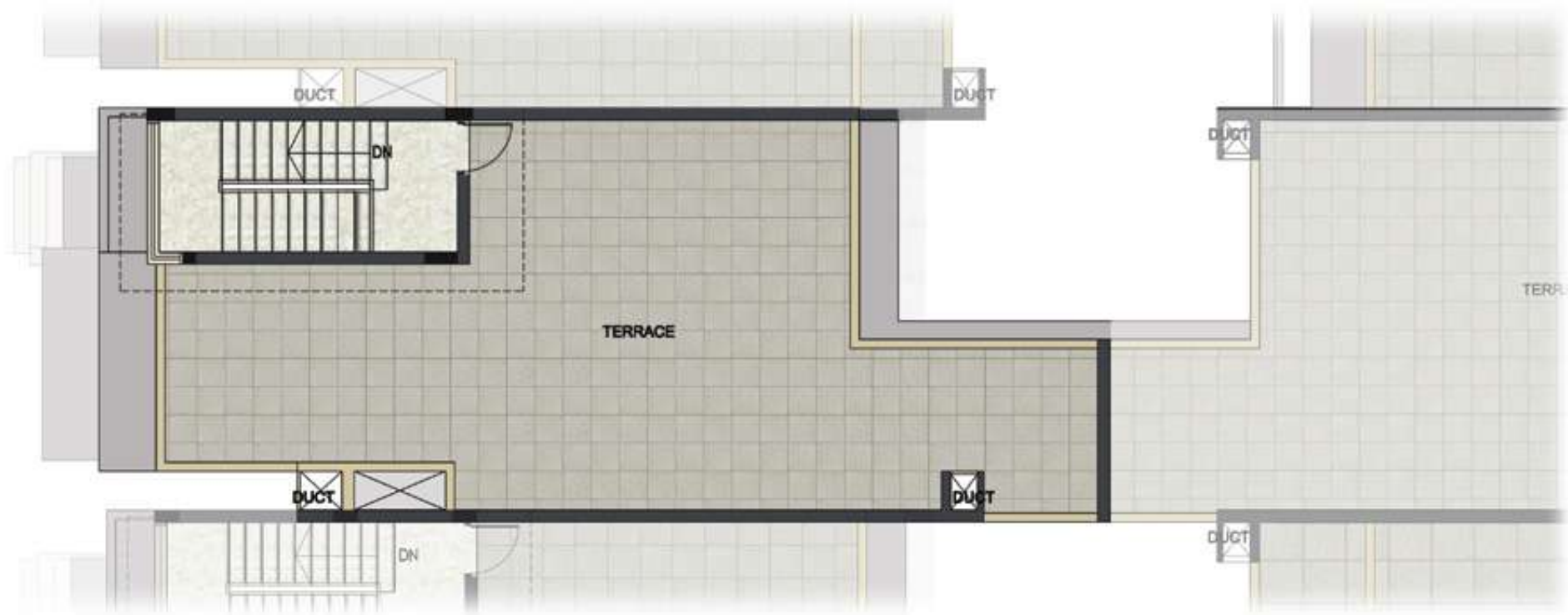
mantri
COURTYARD



| SBUA | Carpet Area | Terrace | Garden |
|---------|-------------|---------|--------|
| 2630sft | 2087sft | 828sft | 176sft |

WEST FACING CONNECTING UNIT TYPE 4A |
4 BHK | **SECOND FLOOR**

mantri
COURTYARD



| SBUA | Carpet Area | Terrace | Garden |
|---------|-------------|---------|--------|
| 2630sft | 2087sft | 828sft | 176sft |

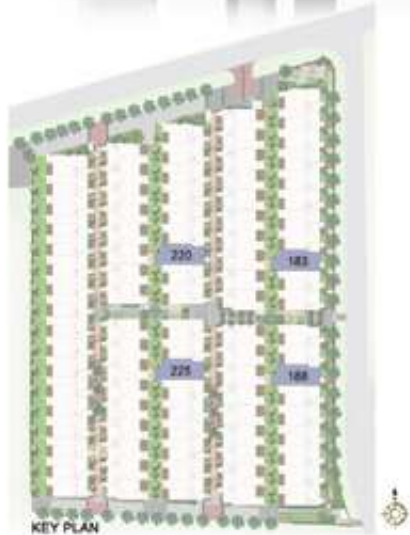
WEST FACING CONNECTING UNIT TYPE 4A |
4 BHK | **TERRACE**

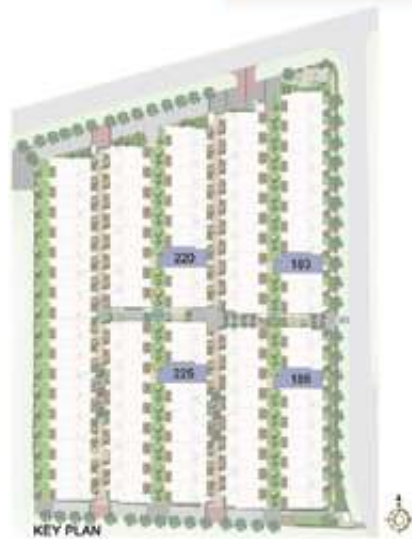
mantri
COURTYARD



| SBUA | Carpet Area | Terrace | Garden |
|---------|-------------|---------|--------|
| 2575sft | 2094sft | 892sft | 176sft |

EAST FACING CONNECTING UNIT TYPE 4B |
 3 BHK | GROUND FLOOR





| SBUA | Carpet Area | Terrace | Garden |
|---------|-------------|---------|--------|
| 2575sft | 2094sft | 892sft | 176sft |

EAST FACING CONNECTING UNIT TYPE 4B |
3 BHK | **FIRST FLOOR**

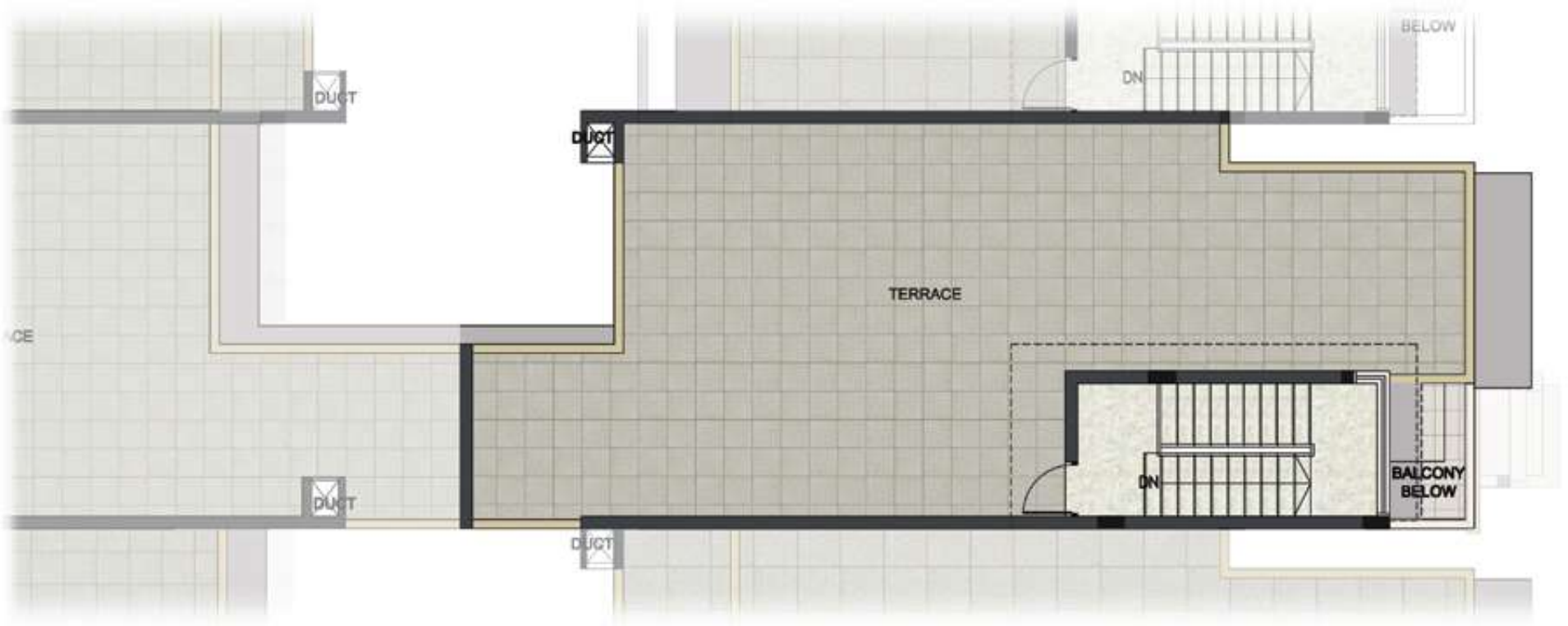
mantri
COURTYARD



| SBUA | Carpet Area | Terrace | Garden |
|---------|-------------|---------|--------|
| 2575sft | 2094sft | 892sft | 176sft |

EAST FACING CONNECTING UNIT TYPE 4B |
3 BHK | **SECOND FLOOR**

mantri
COURTYARD



| SBUA | Carpet Area | Terrace | Garden |
|---------|-------------|---------|--------|
| 2575sft | 2094sft | 892sft | 176sft |

EAST FACING CONNECTING UNIT TYPE 4B |
 3 BHK | TERRACE FLOOR





| SBUA | Carpet Area | Terrace | Garden |
|---------|-------------|---------|--------|
| 2665sft | 2100sft | 849sft | 399sft |

EAST FACING CONNECTING UNIT TYPE 5A |
 3 BHK | GROUND FLOOR





| SBUA | Carpet Area | Terrace | Garden |
|---------|-------------|---------|--------|
| 2665sft | 2100sft | 849sft | 399sft |

EAST FACING CONNECTING UNIT TYPE 5A |
3 BHK | **FIRST FLOOR**

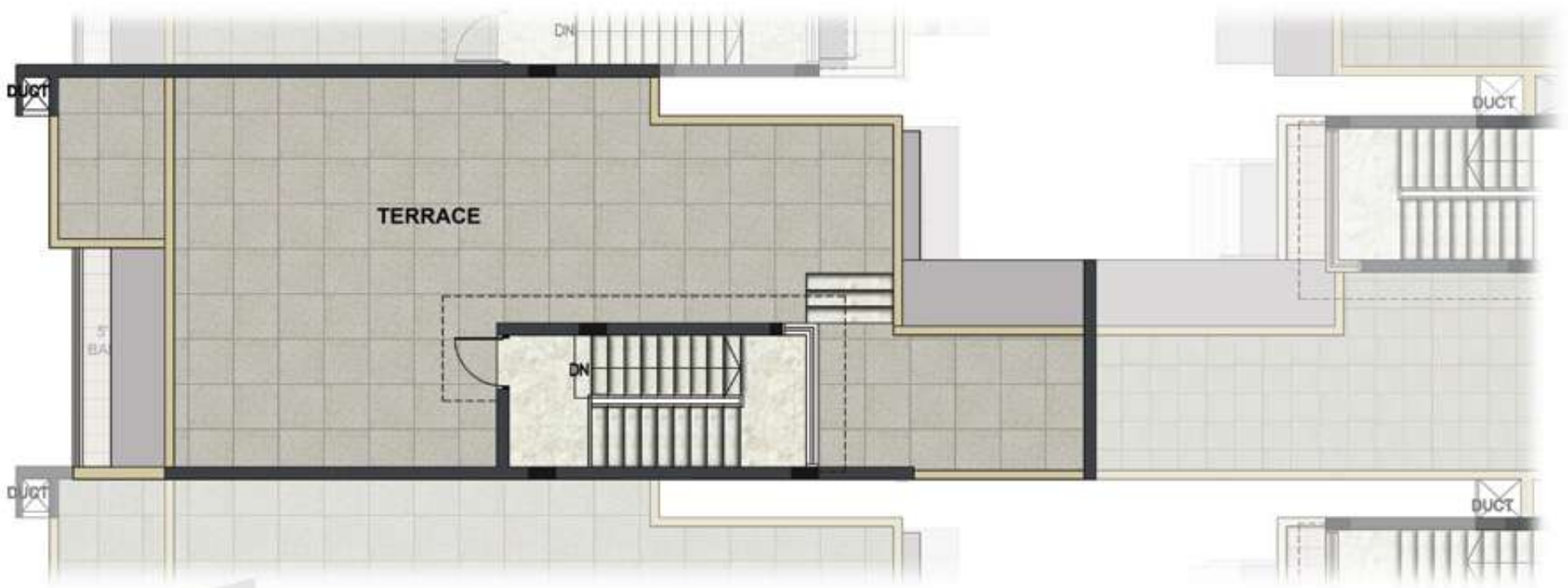
mantri
COURTYARD



| SBUA | Carpet Area | Terrace | Garden |
|---------|-------------|---------|--------|
| 2665sft | 2100sft | 849sft | 399sft |

EAST FACING CONNECTING UNIT TYPE 5A |
3 BHK | **SECOND FLOOR**

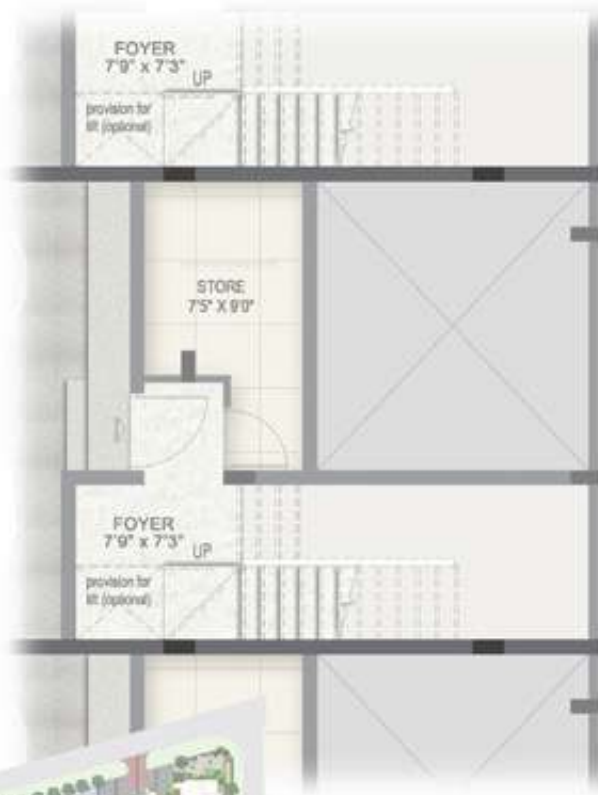




| SBUA | Carpet Area | Terrace | Garden |
|---------|-------------|---------|--------|
| 2665sft | 2100sft | 849sft | 399sft |

EAST FACING CONNECTING UNIT TYPE 5A |
3 BHK | **TERRACE**





| SBUA | Carpet Area | Terrace | Garden |
|---------|-------------|---------|--------|
| 2680sft | 2120sft | 861sft | 176sft |

WEST FACING CONNECTING UNIT TYPE 5B |
 4 BHK | GROUND FLOOR





| SBUA | Carpet Area | Terrace | Garden |
|---------|-------------|---------|--------|
| 2680sft | 2120sft | 861sft | 176sft |

WEST FACING CONNECTING UNIT TYPE 5B |
4 BHK | **FIRST FLOOR**

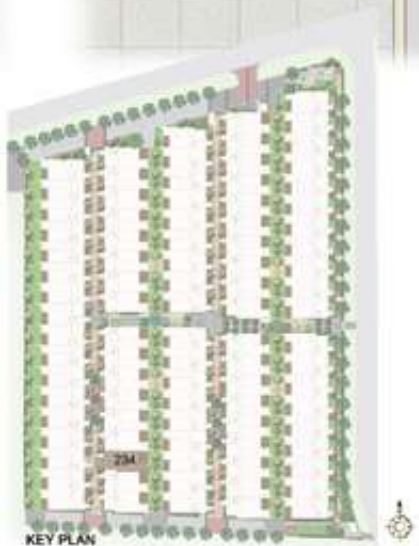
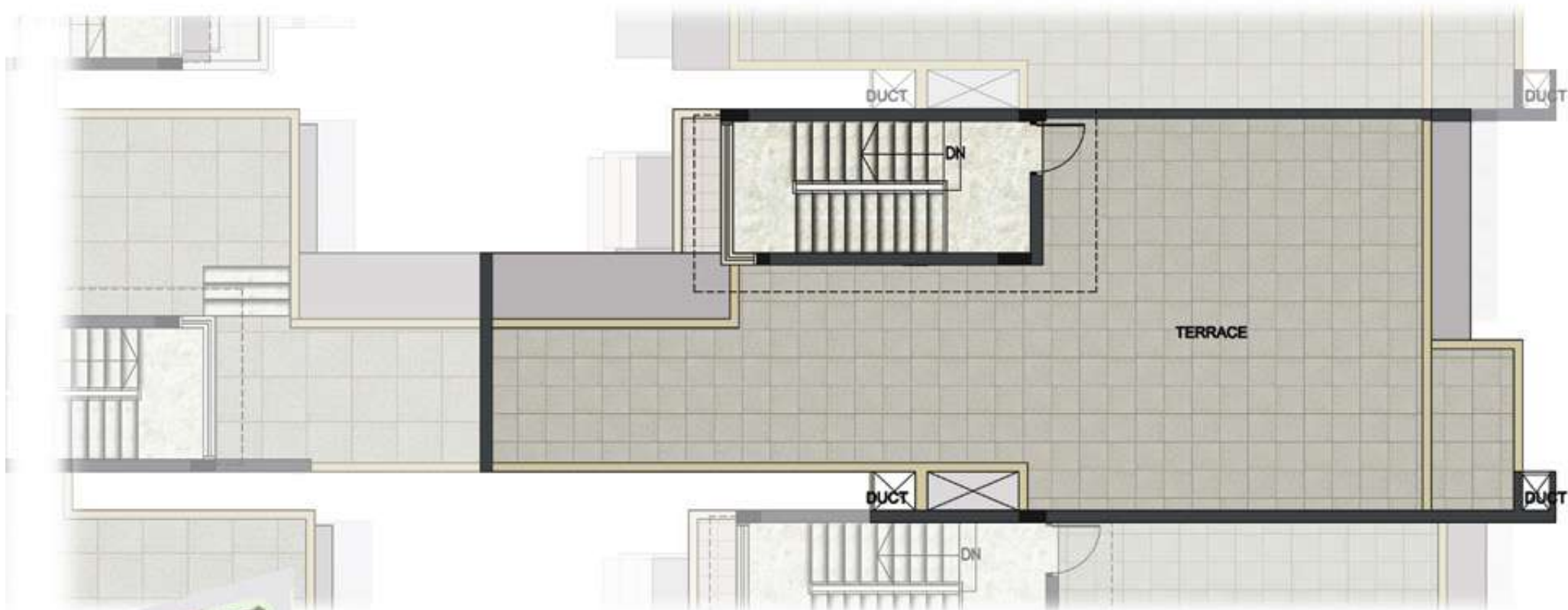
mantri
COURTYARD



| SBUA | Carpet Area | Terrace | Garden |
|---------|-------------|---------|--------|
| 2680sft | 2120sft | 861sft | 176sft |

WEST FACING CONNECTING UNIT TYPE 5B |
4 BHK | **SECOND FLOOR**

mantri
COURTYARD



| SBUA | Carpet Area | Terrace | Garden |
|---------|-------------|---------|--------|
| 2680sft | 2120sft | 861sft | 176sft |

WEST FACING CONNECTING UNIT TYPE 5B |
4 BHK | **TERRACE**

mantri
COURTYARD



LEGEND

| | |
|--|----------------------|
| | MANTRI PROJECT |
| | HOSPITAL |
| | SCHOOL / INSTITUTE |
| | OFFICE |
| | RETAIL / MALL |
| | ENTERTAINMENT / MALL |
| | TEMPLE |



mantri

mantri
COURTYARD

**GET IN
TOUCH**

Head Office: Mantri House
#41, Vittal Mallya Road,
Bengaluru - 560 001
Ph: +91-80-4130 0000

Project Office:
Mantri Courtyard
Off Kanakpura Road,
Bengaluru

e-mail: enquiry@mantri.in
SMS: mantri to 56767

www.mantri.in/courtyard

Toll free :
1800-121-0000