




urban greens
LIVE GREEN. LIVE SMART



A home where every moment is brimming with freshness...

Surrounded with natural greens and ample fresh air, Urban Greens is ideal for those looking to live in a tranquil yet accessible environment.

Deeply inspired by man's intrinsic relationship with nature, Urban Greens has dedicated a good portion of the project area to parks, landscapes, community centre and infrastructure.

Sunshine, open spaces, choices and access - everything that's needed to enrich your life, is here at Urban Greens.



Open up to a world with purer air and cooler homes

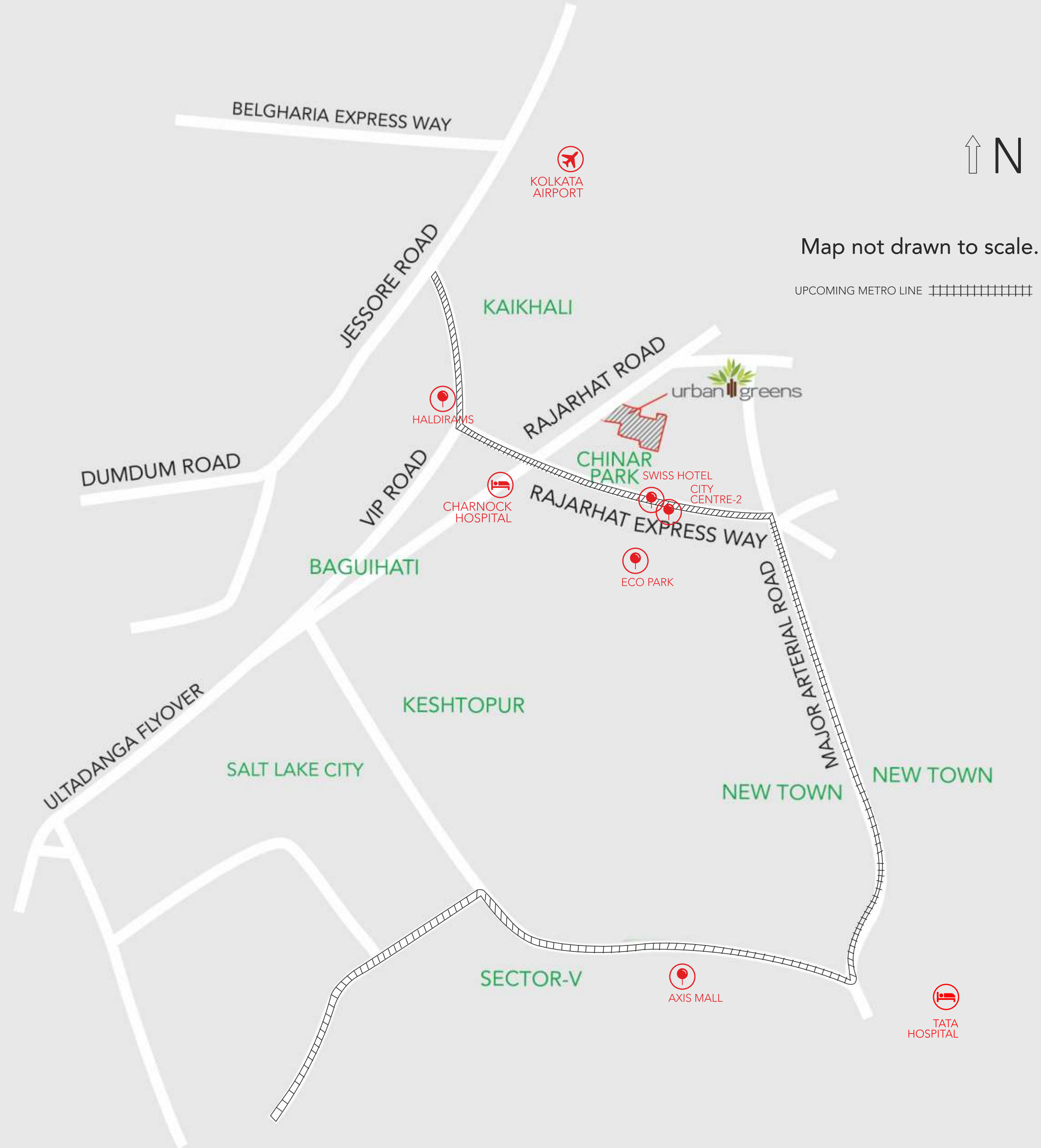
Urban Greens is an IGBC certified green development. A green building is one which uses less water, optimises energy efficiency, conserves natural resources, generates less waste and provides healthier spaces for occupants.

Urban Greens has been designed with care to have minimal impact on the environment. Special attention has been paid to incorporate features that help preserve and save nature and ensure a brighter future.

Live Green at Urban Greens:

Sewage Treatment Plant | Rain Water Harvesting System | Fitness Garden | Central Lawn | Use of recycled/ecofriendly material | High windows guaranteeing better views & cross ventilation





The ideal location

Connectivity doesn't get better than this.

- 500 metres from Chinar Park
- 500 metres from Major Arterial Road
- 1.5 kms from the entertainment hub - City centre II
- 3.7 kms from the Airport
- 1.5 kms to proposed Garia-Airport Metro connectivity

You don't need to travel miles to go everywhere

The convenient location gives you a chance to save fuel, ensuring that all you need to do is take a walk to access your daily needs, shopping and entertainment requirements, schools, health facilities or even your new age office. Thereby letting you spend less time in commuting and be more with your loved ones.



The world is your oyster...

Urban Greens is a premier neighbourhood filled with numerous outdoor & indoor amenities - from a splendid gym to an incredible splash deck and sports activities - here is where your family can have endless fun.

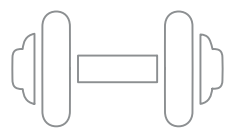
As a distinguished resident, you would have access to more spectacular facilities such as a party lawn, banquet hall and the children's creche amongst others - all created to ensure you live the active lifestyle that you desire.



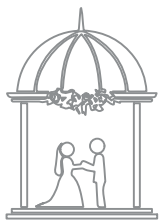
cafeteria



swimming + kids pool



gym



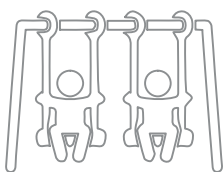
banquet hall



games room



badminton court



children creche



squash court



hobby room



landscaped lawns



* Amenities will be provided in phases, buyers are advised to take a note of the same before buying a flat.



Club at Urban Greens

The recreational club house has been specially designed to inculcate the need to nurture hobbies in children from an early age.

As a home to fitness and wellness, the Club House offers you and your children access to facilities at the convenience of not having to step out and spend a few thousand bucks just to remain fit and healthy. With facilities including a modern gym, childrens play areas and badminton and squash courts, there is always something for everyone!

Club House Amenities

- Badminton Court
- Café Counter
- Children's Creche
- Children's Indoor Play Area
- Children's Outdoor Play Area
- Guest Rooms
- Gymnasium
- Hobby Room
- Indoor Games Room
- Multipurpose Hall with Kitchen
- Party Lawn
- Squash Court
- Tennis / Basketball / Volleyball Court



Unabashed privilege, An existing, thriving gated community.

Urban Greens' success as a development stems from its vibrant community – one that thrives on healthy living, a sporty lifestyle and an unending love for open spaces. It is this community that makes for a loved neighbourhood – one that you can be a part of, and proud of.

Read what the existing residents have to say about Urbangreens

“Urban Greens has given us enough warmth so that we could make our first property our first HOME!!!”

Soumyajit Srimani and Purba Srimani

“We are extremely happy to have an apartment at Urban Greens, an elegant and charming Oasis in Rajarhat. A Blissful Living with happiness in a sophisticated apartment.”

Mehul Jaiswal & Priyanka Jaiswal

“Urban Greens. The name itself describes the apartment. People living here are very helpful and that makes a healthy environment. Construction quality is good, Maintenance staffs are prompt and management is easy to reach. Overall a beautiful apartment and perfect place to live.”

Kailash Agarwal & Payel Agarwal



Model Flat



Model Flat

ACTUAL IMAGES



Model Flat



Model Flat

Quality without compromise

Designed by leading architects, Urban Greens is meticulously planned to maximize space, comfort and style. The best of materials and fittings have gone into building your new home. The walls, doors and floors breathe elegance. Kitchens and bathrooms are fitted with best-in-class fixtures. You will be proud of it.

Interiors

- Internal walls - Smooth, impervious plaster of paris or wall putty
- Doors - Doors with tough timber frames and solid-core flush shutters
- Flooring - Vitrified tiled flooring in all bedrooms, Living/dining rooms
- Windows - Aluminum frames with fully glazed shutters fittings

Kitchen

- Flooring - Ceramic tiles
- Granite Top with steel sink, aluminum frames with fully glazed shutters and fittings
- Dados - Ceramic tiles up to a height of 2 ft from the granite counter top

Bathrooms

- Flooring - Ceramic tiles
- Dados - Ceramic tiles up to a height of 7ft

Sanitary

White, porcelain textures and chromium-plated fittings, commode with concealed cistern

Electricals

- Concealed copper wiring with modular switches and miniature circuit breakers, provision for TV sockets, cable TV and broadband connections.
- AC points in all bedrooms and living room.
- Geyser point in all bathrooms
- Intercom point with phone.
- Washing machine point.

Exteriors

Weatherproof, non-fading exterior finish
AC ledge with all apartments

The Developer



Display Vinimay Pvt. Ltd. is the promoter / developer of Urban Greens Housing Complex and is an associate concern of the Loharuka Group.

Loharuka Group is engaged in real-estate development for more than 25 years and has a proven track record of development of residential projects and customer satisfaction. The Loharuka Group through its group companies / associates is engaged in providing homes to the endless families who aspire for their dream home to become a reality along with modern lifestyle amenities under the brand Loharuka. The group has completed several landmark projects in Kolkata and Pune and is currently lined up with further significant projects in those areas.

A few developments by Loharuka Group in Kolkata include "Green Heights", "Freshia", "Green Oasis", "Green Vista" & "Green Chinar" in the Rajarhat area.

Life & Lifestyle, Secured

A premium lifestyle.

An established community.

A developer with a proven track record. Whether it's home, or a long-term investment, Urban Greens is for her and for him - where life is just the way it should be.





Artists Impression of Badminton Court.



Artists Impression of Swimming Pool

Masterplan

Phase - I

- Badminton Court ①
- Guard House ②
- Kid's Play Area ③
- Fitness Garden ⑨
- Biodiversity Trail ⑫
- Entrance Garden ⑬
- Drop Off ⑭
- Water Feature ⑮
- Barbecue Corner ⑯
- Garden Pathway ⑰
- Car Parking ⑲

Phase - IIA

- Badminton Court ①
- Mini Party Lawn ④
- Shaded Cove ⑩
- Stepped AmphiCourt ⑪
- Drop Off ⑭
- Barbecue Corner ⑯
- MLCP ⑰
- Car Parking ⑲
- Multipurpose Court ⑳
- Badminton
- Basketball
- Lawn Tennis
- Volleyball
- Party Lawn ㉑
- Landscape Garden ㉓

Phase - IIB

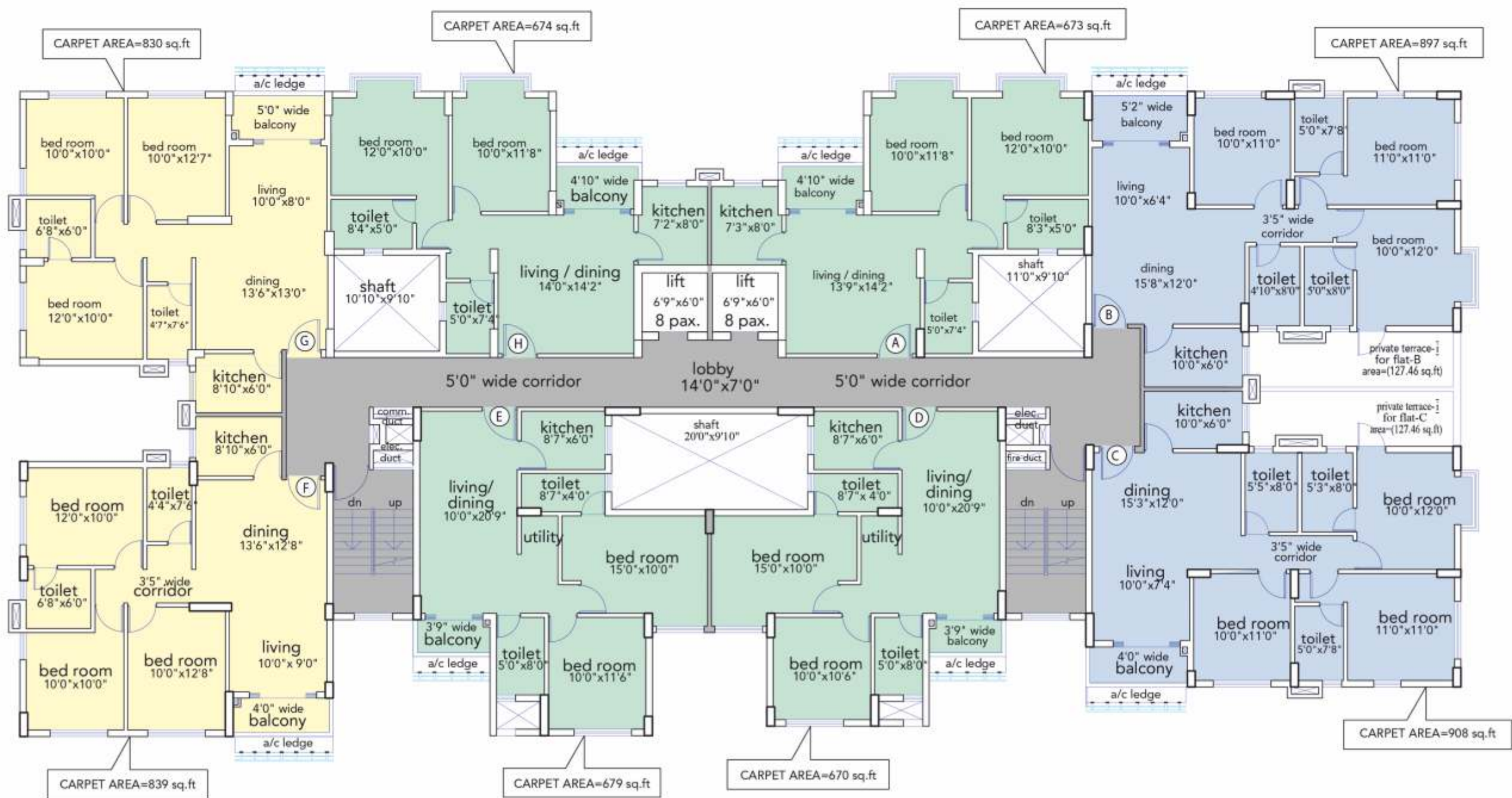
- Badminton Court ①
- Kid's Play Area ③
- Mini Party Lawn ④
- Swimming Pool & Changing Room ⑤
- Kid's Pool ⑥
- Deck ⑦
- Covered Sit-out ⑧
- Fitness Garden ⑨
- Future Development ㉒
- Landscaped Garden ㉓





| TYPE | CARPET AREA | BALCONY AREA | BUILT-UP AREA | LEGEND |
|------|-------------|--------------|---------------|--------|
| A | 673 | 35 | 783 | 2B-2T |
| B | 897 | 46 | 1017 | 3B-3T |
| C | 908 | 37 | 1027 | 3B-3T |
| D | 670 | 25 | 763 | 2B-2T |
| E | 679 | 25 | 775 | 2B-2T |
| F | 839 | 35 | 948 | 3B-2T |
| G | 830 | 43 | 945 | 3B-2T |
| H | 674 | 34 | 785 | 2B-2T |

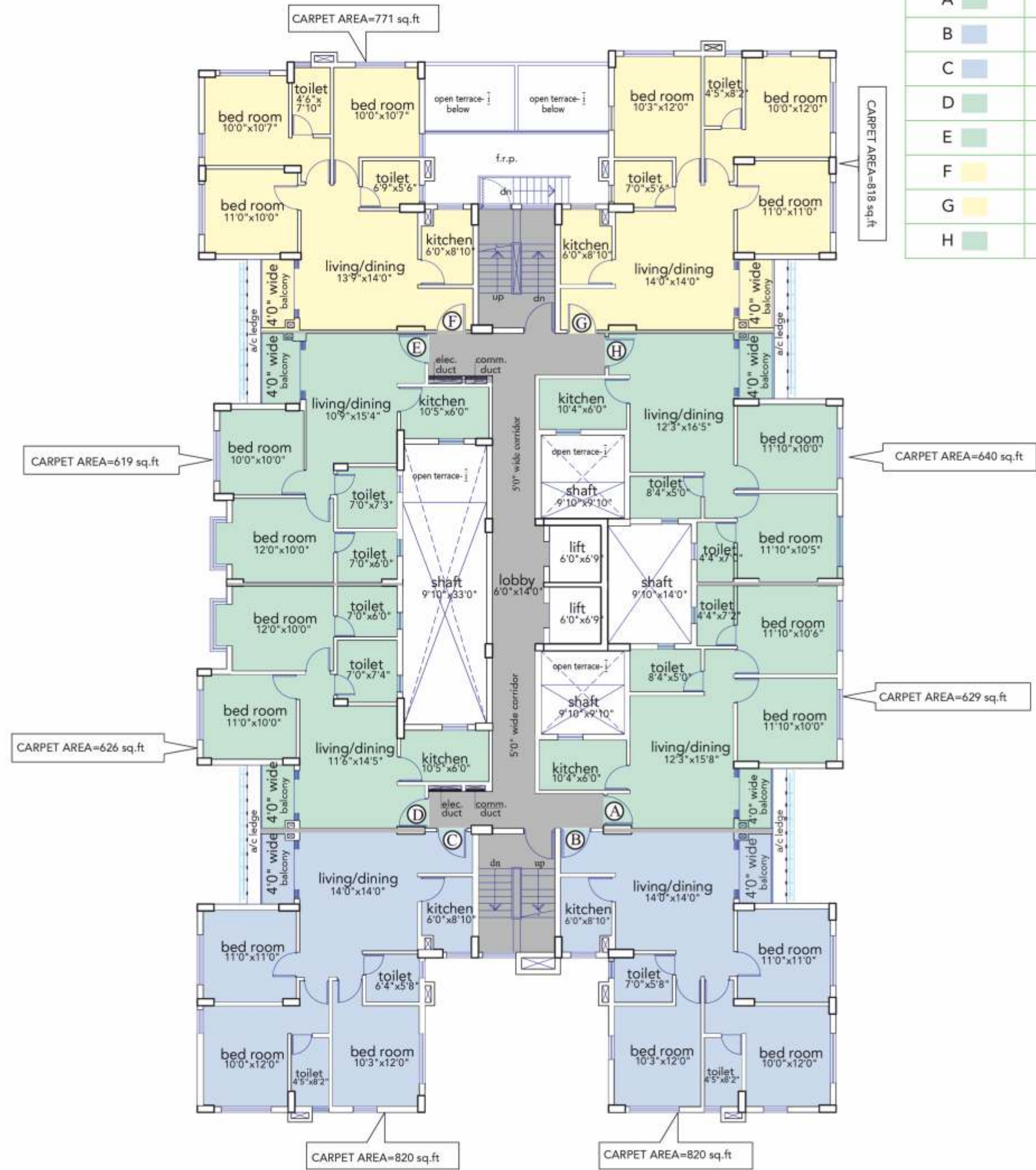
BLOCK - 5



* Dimensions mentioned are tentative. Physical may vary.

| TYPE | CARPET AREA | BALCONY AREA | BUILT-UP AREA | LEGEND |
|------|-------------|--------------|---------------|--------|
| A | 629 | 25 | 718 | 2B-2T |
| B | 820 | 29 | 923 | 3B-2T |
| C | 820 | 29 | 923 | 3B-2T |
| D | 626 | 26 | 713 | 2B-2T |
| E | 619 | 29 | 707 | 2B-2T |
| F | 771 | 28 | 871 | 3B-2T |
| G | 818 | 30 | 921 | 3B-2T |
| H | 640 | 28 | 733 | 2B-2T |

BLOCK - 6

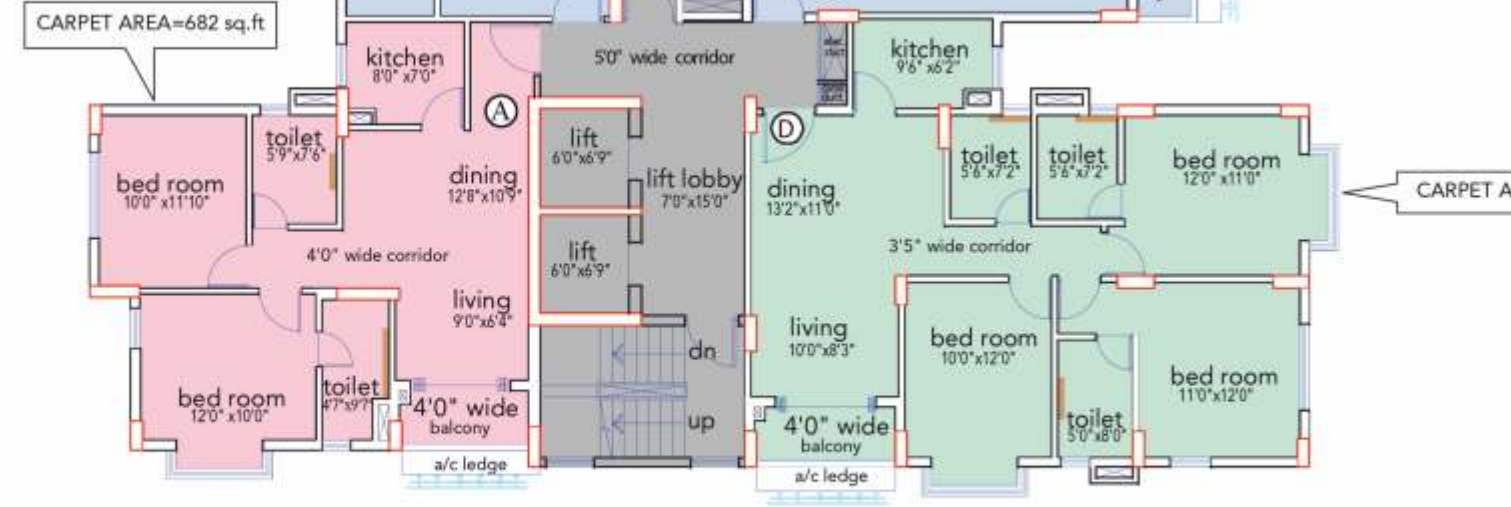
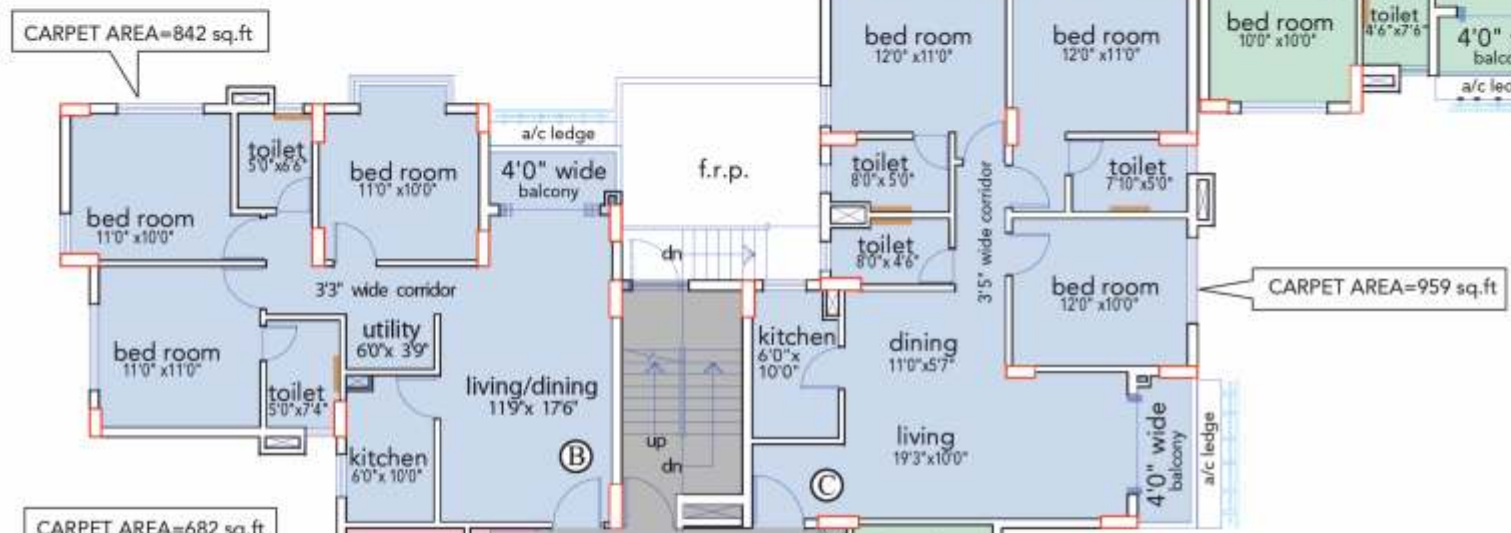
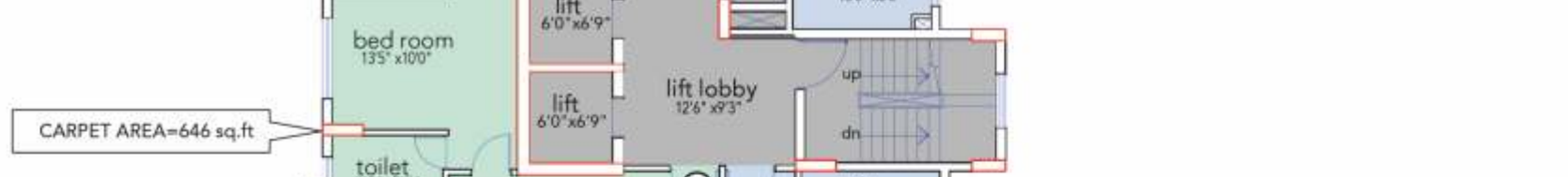
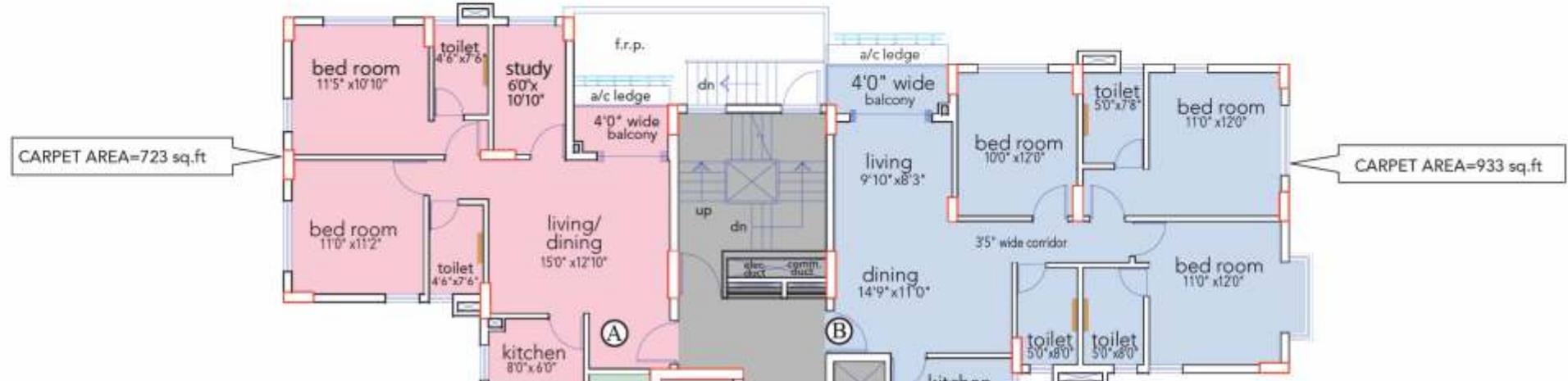


* Dimensions mentioned are tentative. Physical may vary.



BLOCK-8

| TYPE | CARPET AREA | BALCONY AREA | BUILT-UP AREA | LEGEND |
|------|-------------|--------------|---------------|---------|
| A | 723 | 28 | 825 | 2B-2T+5 |
| B | 933 | 36 | 1056 | 3B-3T |
| C | 997 | 37 | 1118 | 3B-3T |
| D | 646 | 33 | 749 | 2B-2T |

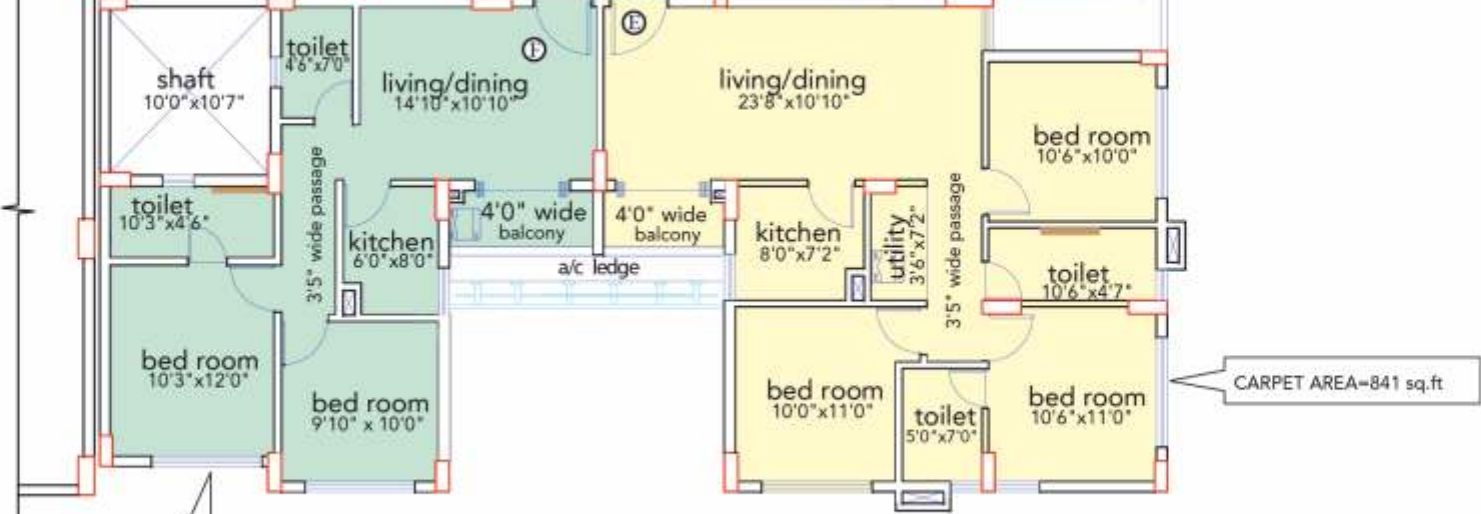
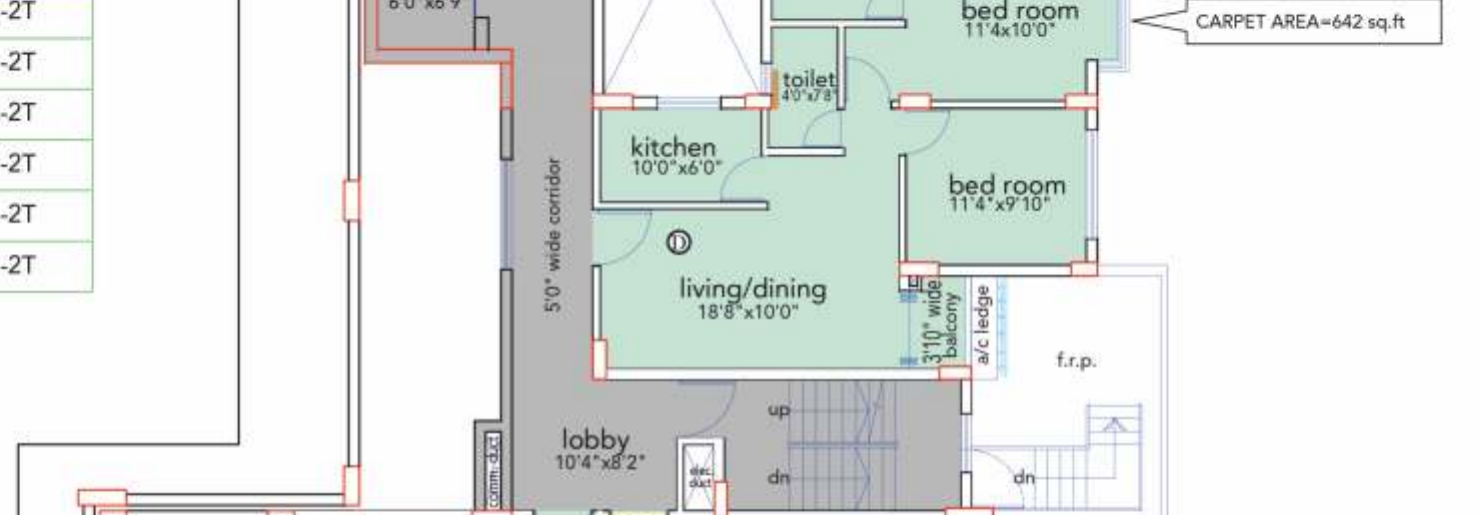
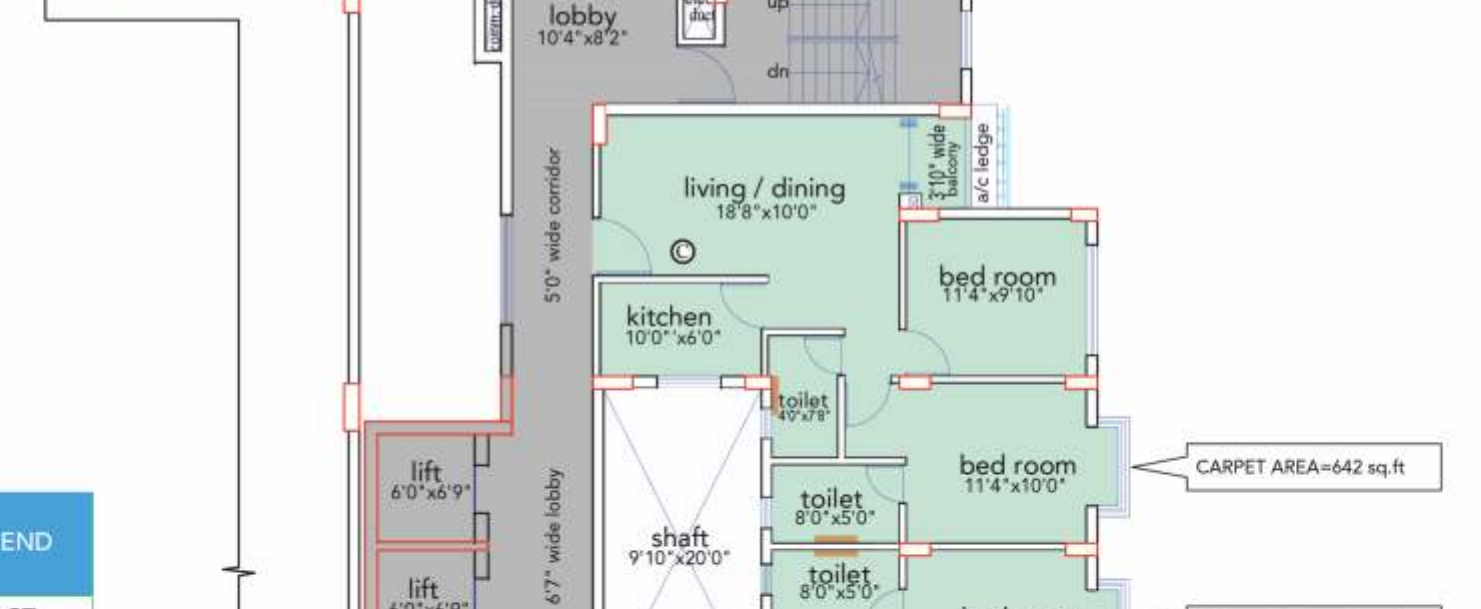
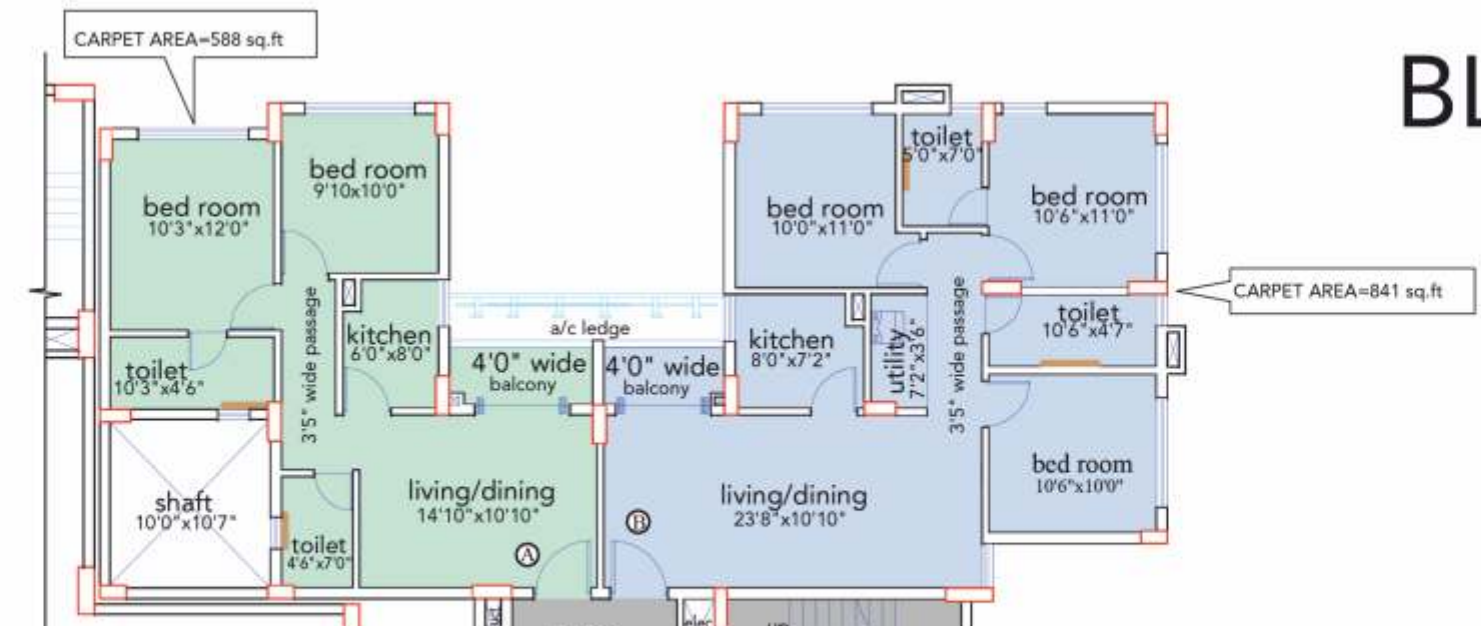


BLOCK - 7 & 8



BLOCK - 9

| TYPE | CARPET AREA | BALCONY AREA | BUILT-UP AREA | LEGEND |
|------|-------------|--------------|---------------|--------|
| A | 588 | 33 | 707 | 2B-2T |
| B | 841 | 27 | 946 | 3B-2T |
| C | 642 | 20 | 726 | 2B-2T |
| D | 642 | 20 | 726 | 2B-2T |
| E | 841 | 27 | 946 | 3B-2T |
| F | 588 | 33 | 707 | 2B-2T |



| TYPE | CARPET AREA | BALCONY AREA | BUILT-UP AREA | LEGEND |
|------|-------------|--------------|---------------|--------|
| A | 682 | 32 | 790 | 2B-2T |
| B | 842 | 31 | 952 | 3B-2T |
| C | 959 | 37 | 1077 | 3B-3T |
| D | 925 | 35 | 1041 | 3B-3T |

BLOCK-7

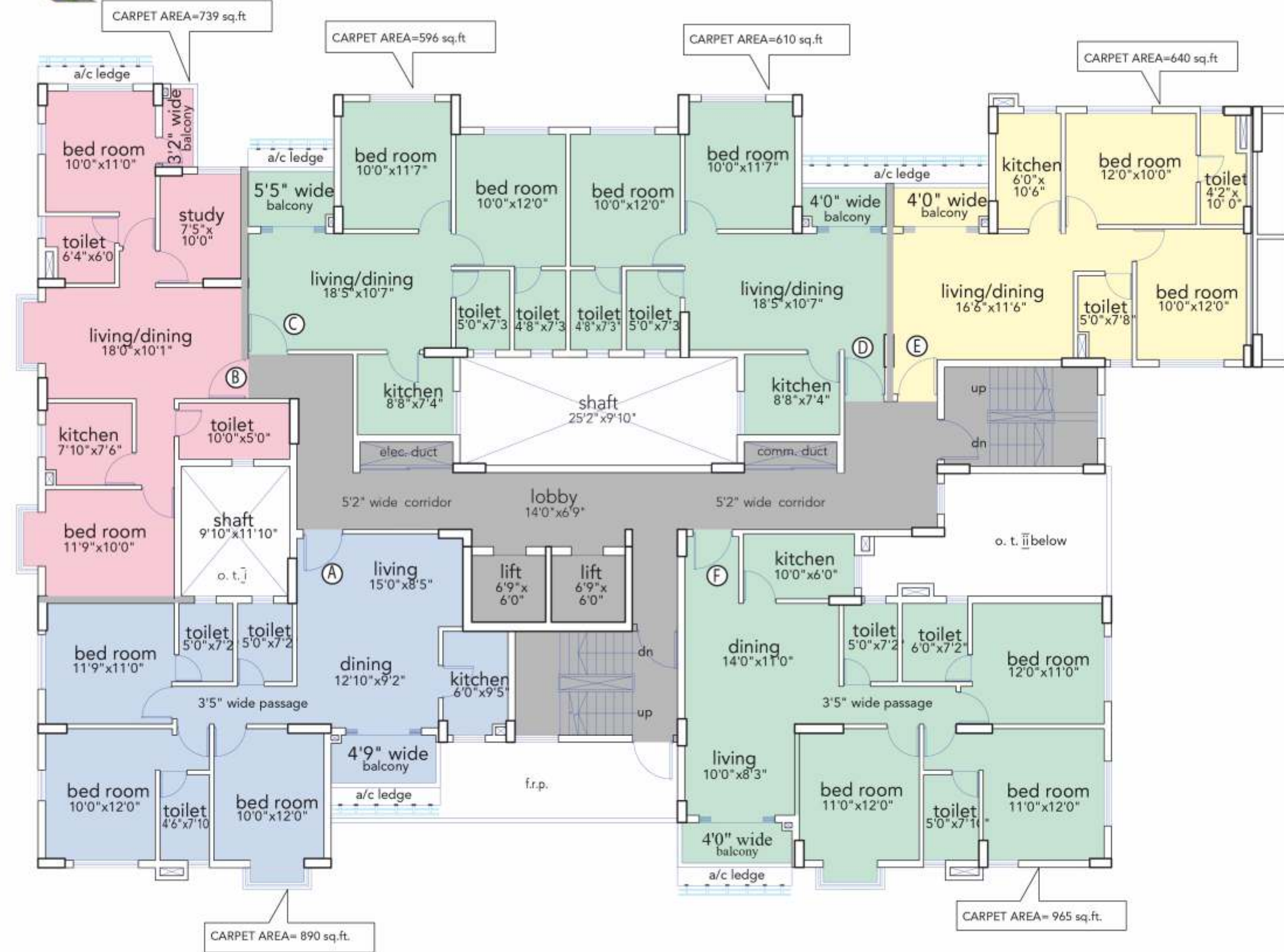
* Dimensions mentioned are tentative. Physical may vary.

* Dimensions mentioned are tentative. Physical may vary.

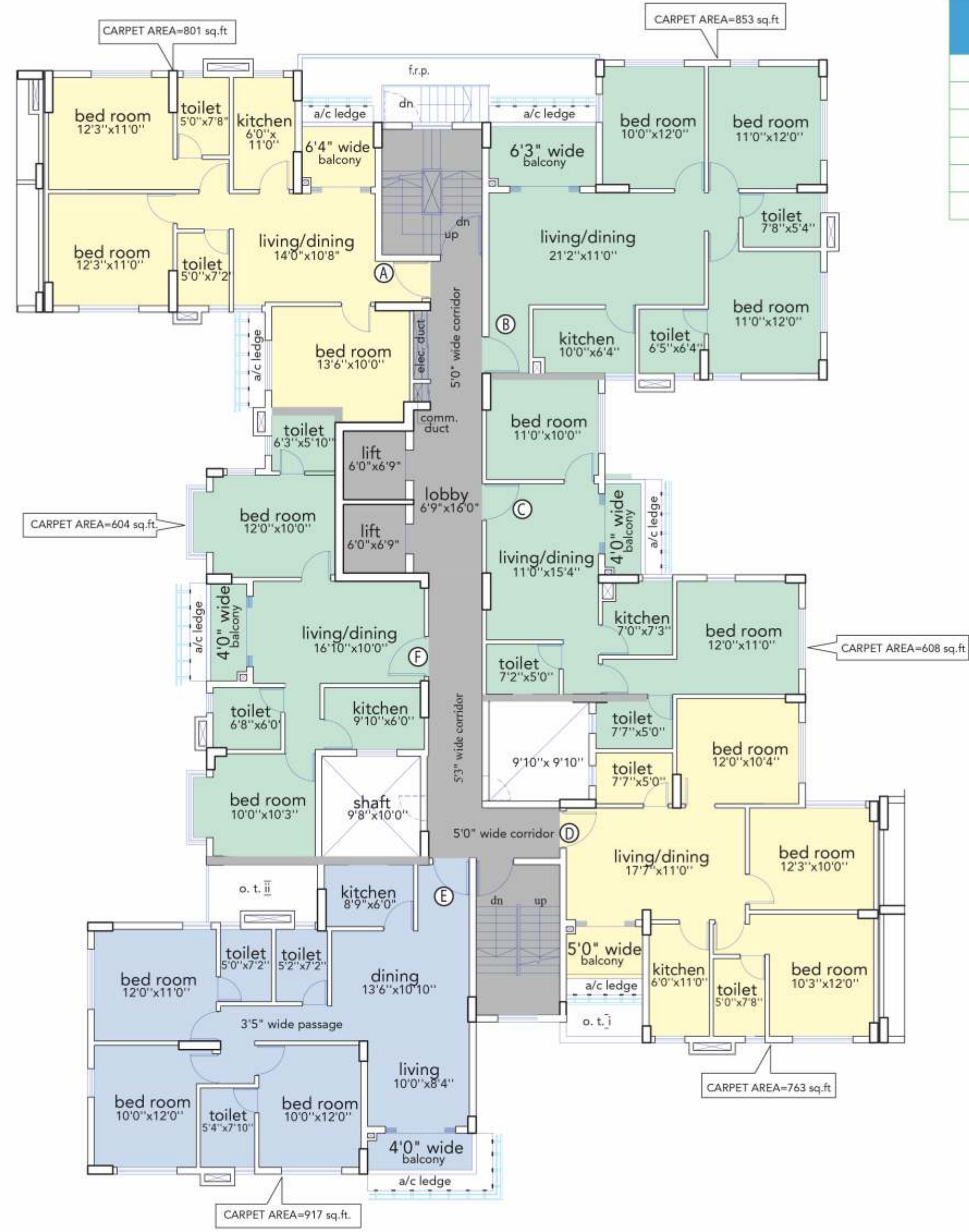


| TYPE | CARPET AREA | BALCONY AREA | BUILT-UP AREA | LEGEND |
|------|-------------|--------------|---------------|---------|
| A | 890 | 41 | 1019 | 3B-3T |
| B | 739 | 20 | 838 | 2B-2T+S |
| C | 596 | 39 | 692 | 2B-2T |
| D | 610 | 27 | 697 | 2B-2T |
| E | 640 | 31 | 731 | 2B-2T |
| F | 965 | 37 | 1088 | 3B-3T |

BLOCK - 10



* Dimensions mentioned are tentative. Physical may vary.



| TYPE | CARPET AREA | BALCONY AREA | BUILT-UP AREA | LEGEND |
|------|-------------|--------------|---------------|--------|
| A | 801 | 43 | 927 | 3B-2T |
| B | 853 | 61 | 990 | 3B-2T |
| C | 608 | 32 | 701 | 2B-2T |
| D | 763 | 35 | 863 | 3B-2T |
| E | 917 | 37 | 1040 | 3B-3T |
| F | 604 | 34 | 722 | 2B-2T |

BLOCK - 11



* Dimensions mentioned are tentative. Physical may vary.



| TYPE | CARPET AREA | BALCONY AREA | BUILT-UP AREA | LEGEND |
|------|-------------|--------------|---------------|--------|
| A | 679 | 36 | 789 | 2B-2T |
| B | 913 | 42 | 1033 | 3B-3T |
| C | 790 | 45 | 907 | 3B-2T |
| D | 674 | 24 | 768 | 2B-2T |
| E | 669 | 24 | 768 | 2B-2T |
| F | 883 | 39 | 997 | 3B-2T |
| G | 880 | 44 | 995 | 3B-2T |
| H | 677 | 35 | 789 | 2B-2T |

BLOCK - 12

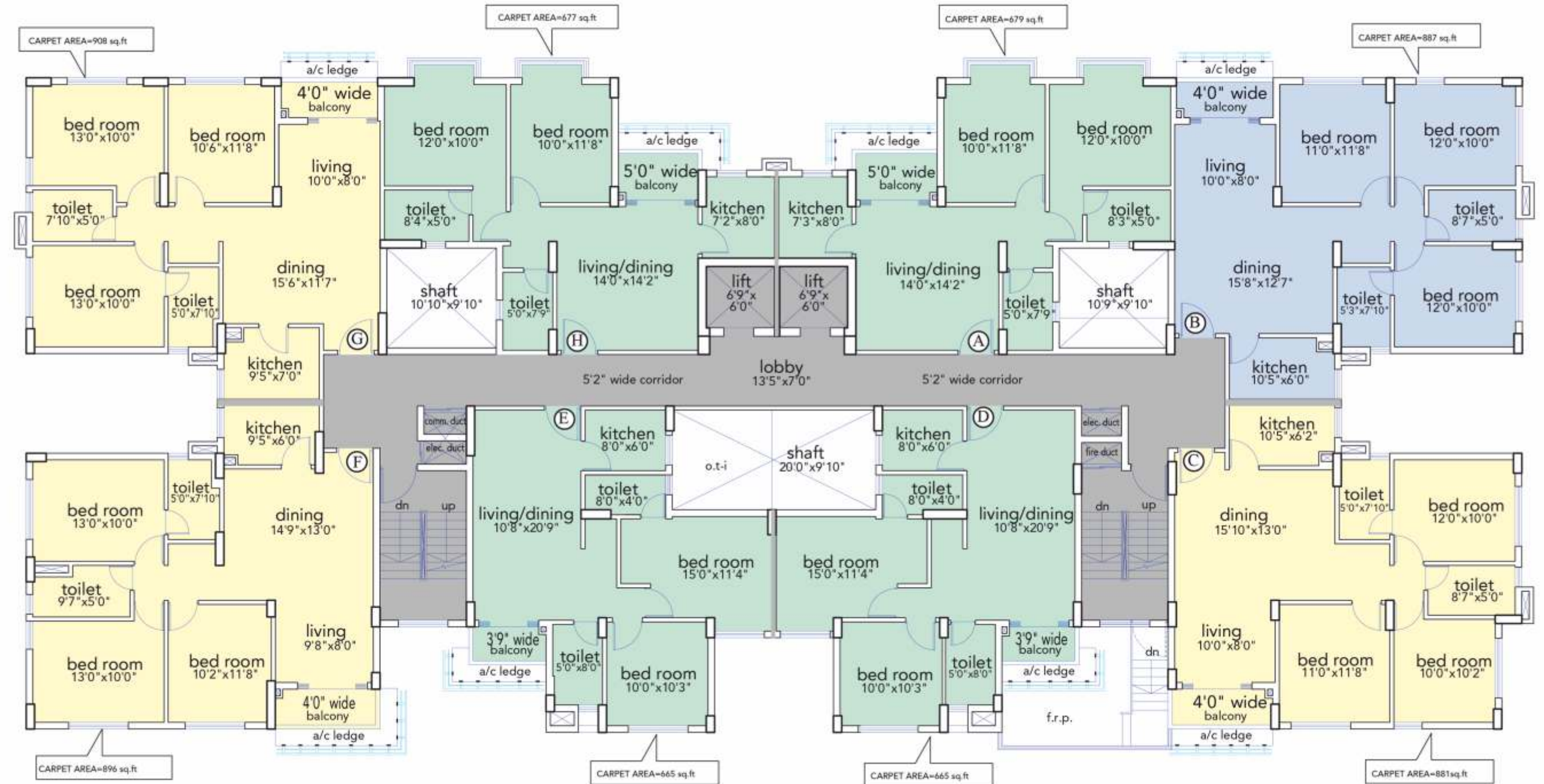


| TYPE | CARPET AREA | BALCONY AREA | BUILT-UP AREA | LEGEND |
|------|-------------|--------------|---------------|--------|
| A | 679 | 37 | 793 | 2B-2T |
| B | 887 | 34 | 990 | 3B-2T |
| C | 881 | 35 | 993 | 3B-2T |
| D | 665 | 24 | 757 | 2B-2T |
| E | 665 | 24 | 758 | 2B-2T |
| F | 896 | 35 | 1008 | 3B-2T |
| G | 908 | 34 | 1012 | 3B-2T |
| H | 677 | 36 | 790 | 2B-2T |

BLOCK - 13



* Dimensions mentioned are tentative. Physical may vary.

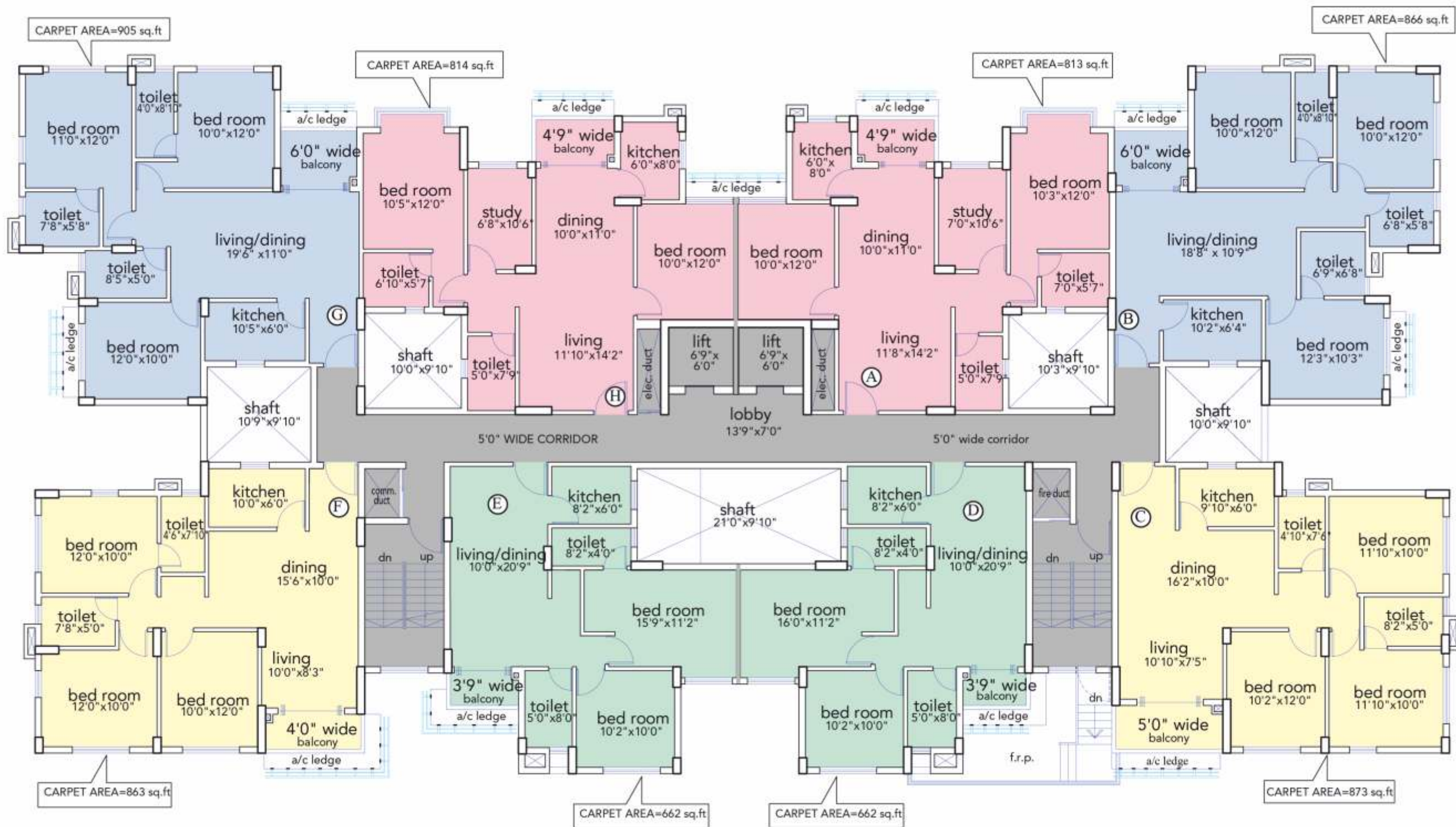


* Dimensions mentioned are tentative. Physical may vary.

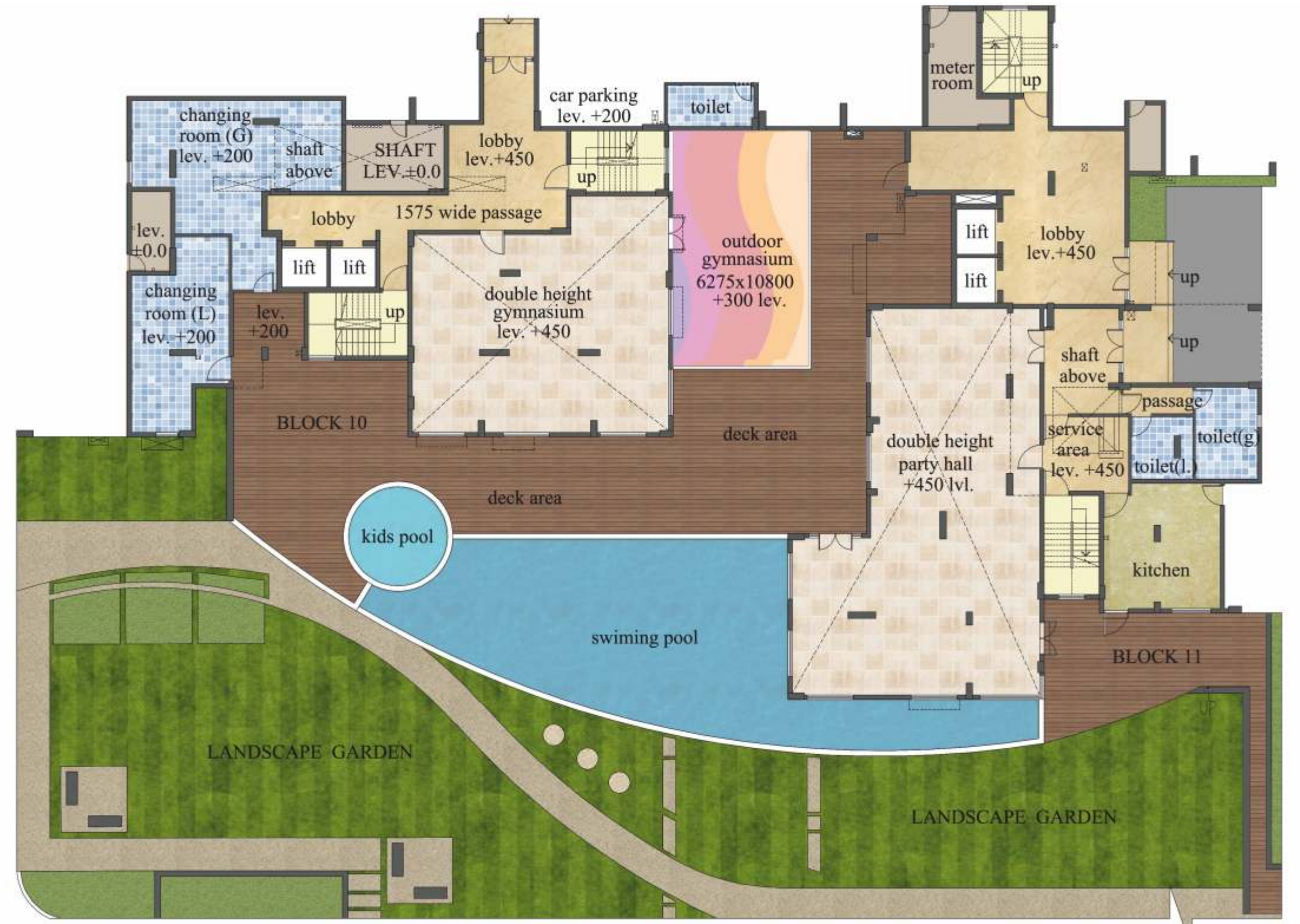


| TYPE | CARPET AREA | BALCONY AREA | BUILT-UP AREA | LEGEND |
|------|-------------|--------------|---------------|---------|
| A | 813 | 35 | 925 | 2B-2T+S |
| B | 866 | 43 | 994 | 3B-3T |
| C | 873 | 50 | 1002 | 3B-2T |
| D | 662 | 22 | 753 | 2B-2T |
| E | 662 | 24 | 755 | 2B-2T |
| F | 863 | 36 | 978 | 3B-2T |
| G | 905 | 45 | 1032 | 3B-3T |
| H | 814 | 35 | 925 | 2B-2T+S |

BLOCK - 14



* Dimensions mentioned are tentative. Physical may vary.



GROUND FLOOR GARDEN AREA, DOUBLE HEIGHTED BANQUET & GYMNASIUM

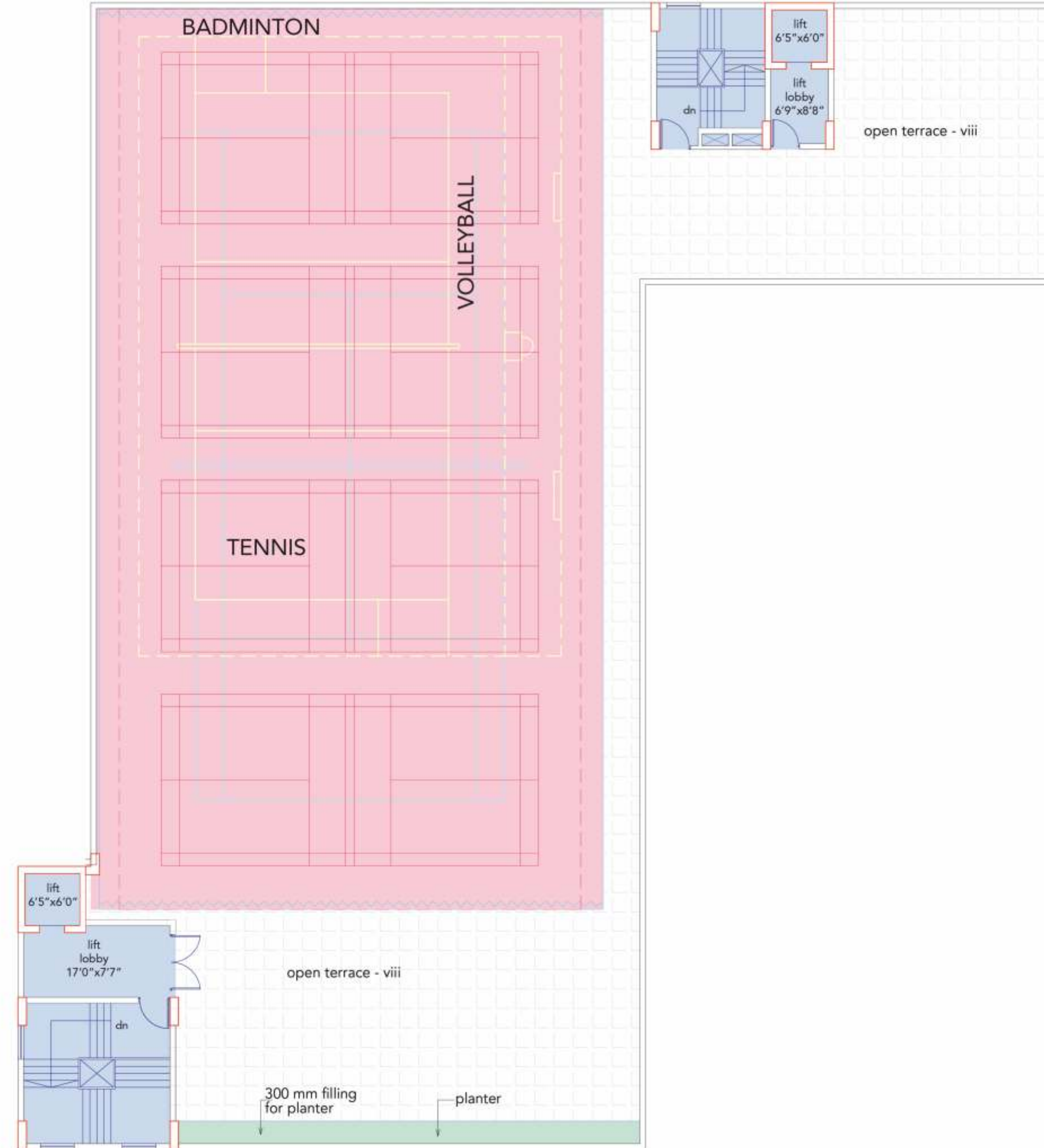
* Dimensions mentioned are tentative. Physical may vary.

Club above MLCP



* Dimensions mentioned are tentative. Physical may vary.

MLCP ROOF



* Dimensions mentioned are tentative. Physical may vary.

HIRA Reg. No. : HIRA/P/NOR/2019/000401
(Block : 5,6,7,8,9 & MLCP)

This brochure is conceptually a marketing material for the Project URBAN GREENS. Phase-I of this project has been constructed and completed. Construction of Phase-IIA is in Progress & Phase-IIB is proposed to be constructed / marketed in near future. Buyers of the respective phase are advised to take note of all amenities and facilities available in their respective phase before buying a flat.



Pre-Certified
Silver Rating by
Indian Green
Building Council (IGBC)

Developer

DISPLAY VINIMAY PVT. LTD.

Architect



Site: Rajarhat Main Road, Atghara, Kolkata, West Bengal 700 136. **W** www.urbangreens.co.in | **M** 9983102777 | **P** 033 4065 2010/11

Disclaimer: This brochure is meant for marketing and advertising purpose only. The company reserves the right to alter the product details mentioned inside without any prior notice.
All images are artist's impressions only.