



EUROPA TOWERS

Premium Flats at Matiyari Chauraha, Lucknow



COMMUNION WITH MOTHER NATURE



ABOUT US

We are thorough professionals and technical experts in the field of construction for over fifteen years with an experience in construction and real estate projects worth more than four hundred crores. We have a large team of Architects and Civil Engineers to deliver the quality construction. We have been honored for several new Researches and Developments in the field of Vastu, Building Biology and Innovative Materials of Construction. We have a keen interest to save Ecology and Environment that largely reflects in our project "Cloud 9 - The Nature's Park" spanning 35,00,000 ft² area in Lucknow. Another project with floor space of 30,00,000 ft² - an Apartment Township on development level. Star on our collar projects are FDDI Raebareli (worth 137 crores completed in 2010), FDDI Rohtak (worth 102 crores completed in 2012), Sagar Institute of Technology and Management including B. Pharma & B. Ed. (worth 46 crores completed in 2009), Jahangirabad Institute (worth 126 crores 60% completed)....andso many.

EUROPA TOWERS

Europa Towers is the latest modern & high-end housing project from Europa Infratech.

The major highlight of the project is that it is being developed on Green Building Architecture. The idea is to bring in new technology through Research and Innovation. The construction and development of the project will be eco-friendly. The flats have been designed in such a manner that the owner will feel the privilege of living in a house rather than a flat.

The location of the project has been suitably decided based on it's nearness to major landmarks of the city, easy approach to the airport, railway station, major hospitals, educational institutes, shopping malls and banks etc., being a fast developing area with a

potential to early and high value appreciation, being close to and easily approachable to the heart of the city, and, yet being away from the pollution and urban chaos.

The project has dual opening- on NH-24 as well as on Matiyari Bazaar Road with easy access on both sides.

Right from the design to the construction and finishing, every care has been given on the minutest of the details to ensure that we deliver to you a house which satisfies all your home needs with best of the available quality standards.

With a floor space of about 1,80,000 ft² the project will be one of the most urbanized projects of

Lucknow with all the modern facilities like security and safety devices and mechanisms both for the project as well as for each house individually, dedicated transformer for smooth power supply, adequate water supply, drainage system and rainwater harvesting systems.

Care has been taken for the recreational needs of the residents by providing a Club House equipped with Gymnasium, Pool Table and Children's Play Area. In addition, there would be beautifully landscaped lush green open spaces.

We invite you to experience a truly global lifestyle!

Welcome to the Europa Towers!






EUROPA
TOWERS

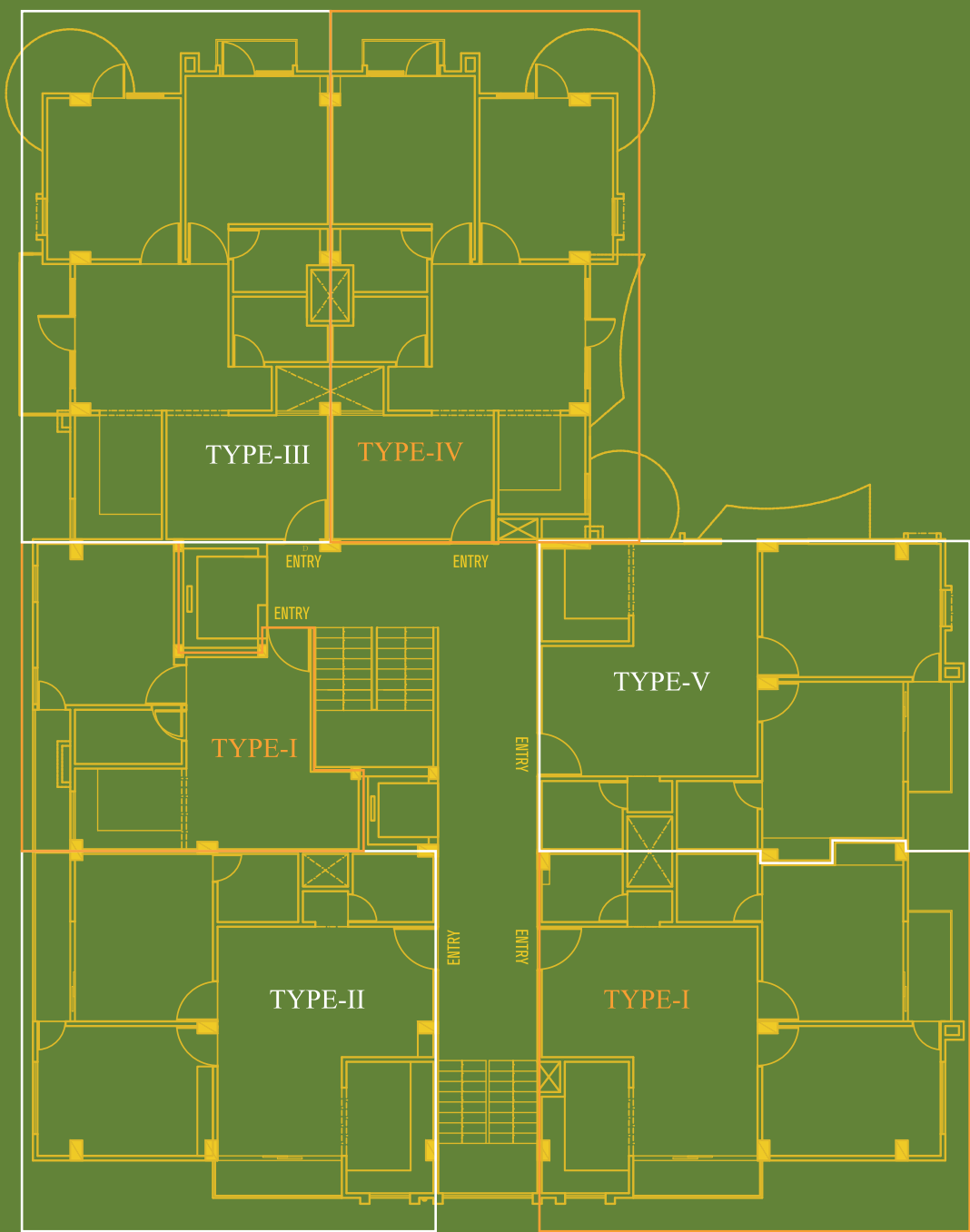
DAY VIEW



NIGHT VIEW



BLOCK ‘A’



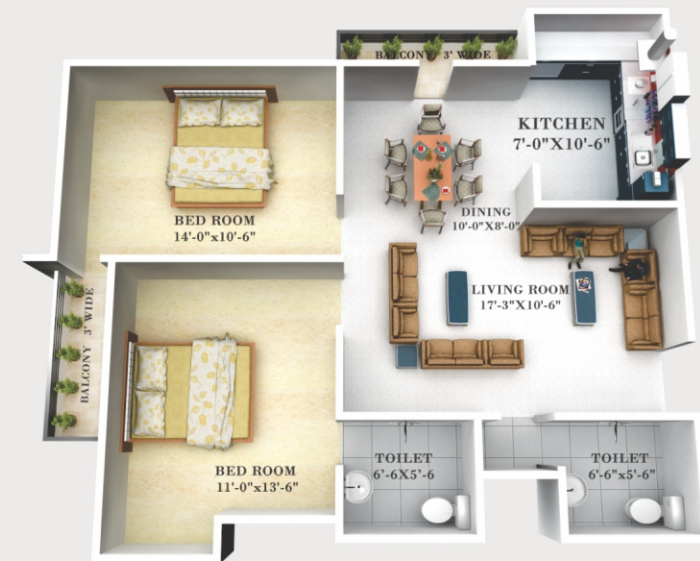
1BHK TYPE ‘I’ - AREA : 674.65 SQ. FT.



2BHK TYPE ‘III’ - AREA : 1199.00 SQ. FT.



2BHK TYPE 'I' - AREA : 1129.15 SQ. FT.



2BHK TYPE 'II' - AREA : 1122.69 SQ. FT.

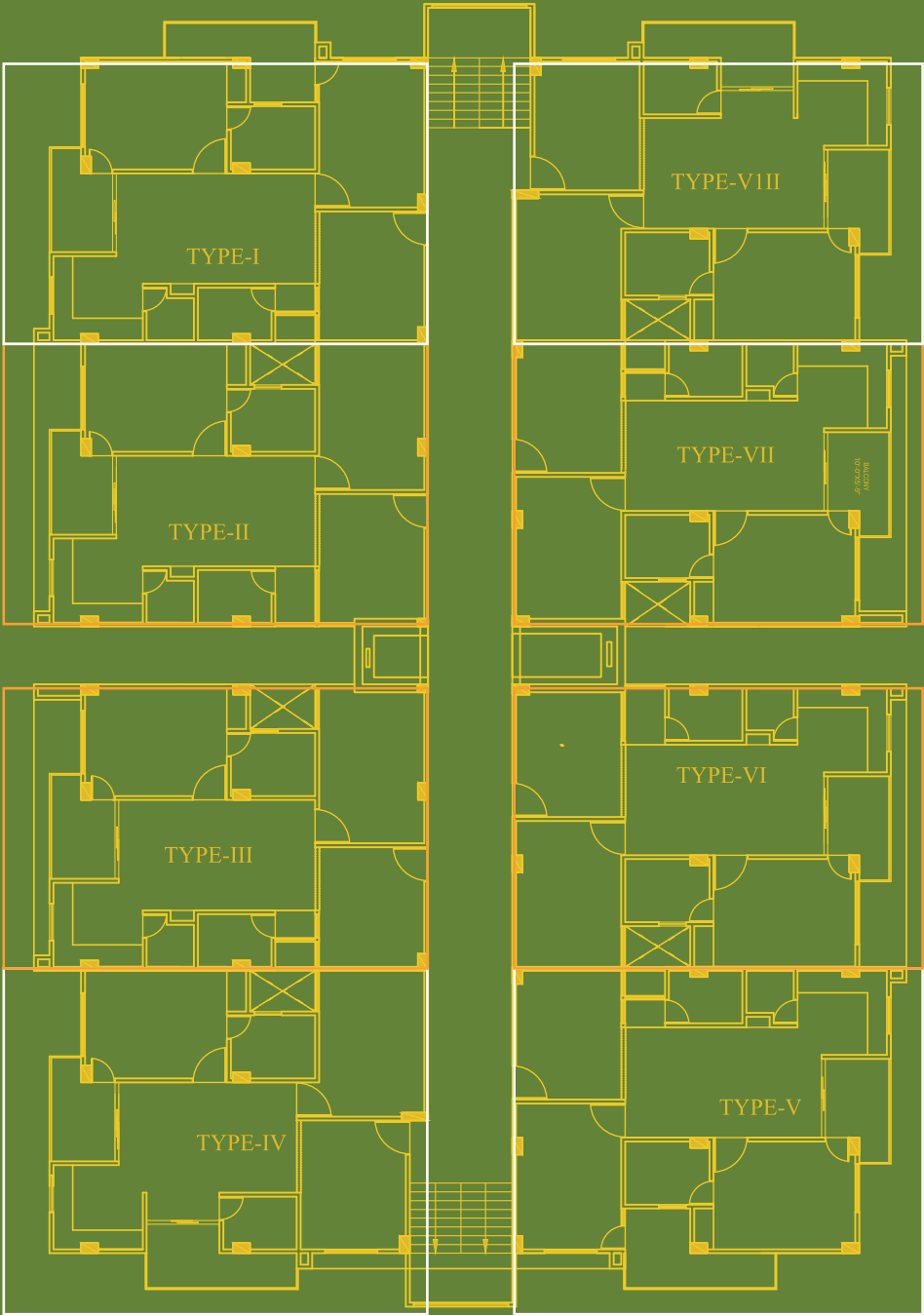


2BHK TYPE 'IV' - AREA : 1218.89 SQ. FT.



2BHK TYPE 'V' - AREA : 1133.02 SQ. FT.

BLOCK ‘B’



2BHK TYPE ‘I’ - AREA : 1240.62 SQ. FT.



2BHK TYPE ‘II’



2BHK TYPE ‘V’ - AREA : 1298.30 SQ. FT.



2BHK TYPE ‘VI’



- AREA : 1240.30 SQ. FT.



2BHK TYPE 'III' - AREA : 1298.30 SQ. FT.



2BHK TYPE 'IV' - AREA : 1232.12 SQ. FT.



- AREA : 1232.12 SQ. FT.



2BHK TYPE 'VII' - AREA : 1233.52 SQ. FT.



2BHK TYPE 'VIII' - AREA : 1267.42 SQ. FT.



EXTERNAL SECURITY

- Gated Premises
- 24x7 Guards on all Gates
- One entry one exit with barricade

INTERNAL SECURITY

- Night vision CCTV at gate, lift lobby
- Intercom facility
- Video Door Phone
- Covered Parking for cars on stilts and basement

FIRE SAFETY

- All Fire Safety Equipment and processes, as required by the norms

ELECTRICAL POWER

- 100% Power back-up for the project
- Dedicated Transformer

ENVIRONMENT FRIENDLY

- Lush green landscape
- Rainwater Harvesting
- Water bodies
- Green Building Biology based design
- Vastu based Design

COMMUNICATION

- Fully Wi-fi enabled project for fast and easy communication

LIFTS

- Automatic Lifts are being provided in each tower supported with power backup

KID'S PLAY AREA

- Dedicated open Kid's Play Area with Safe Swings and Slides etc.

PARK

- Lush Green Park with Iron Benches and Jogging Track supported with beautiful landscape

CLUB

- Club equipped with all the entertainment facilities like Pool Table, Banquet Hall and Gymnasium

COMMERCIAL AREA

- Separate Commercial Space being developed within the project.

LOCATIONAL ADVANTAGE

- Direct access to NH-24 as well as Matiyari Bazar Road
- Vegetable Market, Banks, ATMs, Hospitals, Educational Institutes in close vicinity
- Close to Gomtinagar, High Court, Shaheed Path and major Malls

AMENITIES



STRUCTURE

Designed for the highest seismic considerations as stipulated by the relevant code of practice and for better safety

FOUNDATION

Reinforced concrete pile footings and RCC framed structure

PRIMARY STEEL OF JINDAL / TATA MAKE USED IN STRUCTURE

ALL BEDROOMS

Vitrified Tiles and Laminated Wooden flooring.*

**Conditions apply*

LIVING / DINING ROOM

Vitrified Tiles/ Imported Marble flooring; *
Wall finish with Asian Emulsion on, Berger or equivalent

**Conditions apply*

TOILETS

Ceramic Tiles on flooring; Ceramic Wall Tiles Kajaria, Nitco or equivalent up to ceiling; Oil bound distemper on walls & ceiling; Granite Vanity Counter; Suitable water-proofing treatment; Supreme/Astral or equivalent brand sanitary ware. Provision for installation of Geysers

KITCHEN

Vitrified / Ceramic Tiles/ Marble stone Flooring; Oil bound distemper on walls & ceiling; Provision for installation of Geysers

DOORS

Main door teakwood, painted/polished frame of hardwood with skin-moulded internal door shutters;

BALCONIES

Anti-skid Tiles/ Stone Flooring; Exterior Grade Paint on wall & ceiling; MS/ SS Handrails as per the functional and elevation requirements

HARDWARE

Locks, Handles and Knobs (Mortise and Cylindrical Locks) from reputed brands; High Quality steel/ brass hardware

ELECTRICAL

Havells/Finolex or equivalent copper wiring in concealed conduits with adequate provision for light fan, power and receptacle points; Crabtree/Legrand or equivalent modular switches, sockets, distribution boxes & circuit breakers.

EXTERNAL WALLS

External Grade anti-fungal/ anti-algal paint of reputed brand

STAIRCASE

- Granite on treads, Vitrified Tiles risers and landings; Painted MS Handrails and Balustrades; Oil Bound Distemper on walls



SPECIFICATION

OUR FEW PRESTIGIOUS PROJECTS

- **Footwear Design & Development Institute (FDDI)**
Raebareli, Uttar Pradesh
A 137 cr. project completed in 2010
- **Footwear Design & Development Institute (FDDI)**
Rohtak, Haryana
A 102 cr. project completed in 2012
- **Sagar Institute of Technology & Management**
Barabanki, Uttar Pradesh
A 46 cr. project completed in 2009
- **Jahangirabad Institute of Technology**
Barabanki, Uttar Pradesh
A 126 cr. project of which 60% is already completed
- **Rajesh Pandey Law College**
Akbarpur, Ambedkar Nagar, Uttar Pradesh
- **Rajesh Pandey Hospital & Medical Institute**
Akbarpur, Ambedkar Nagar, Uttar Pradesh

And many more...







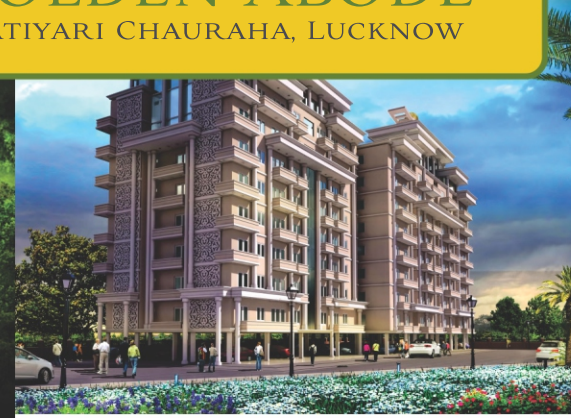
CLOUD 9
SITAPUR ROAD, LUCKNOW



ONGOING PROJECTS



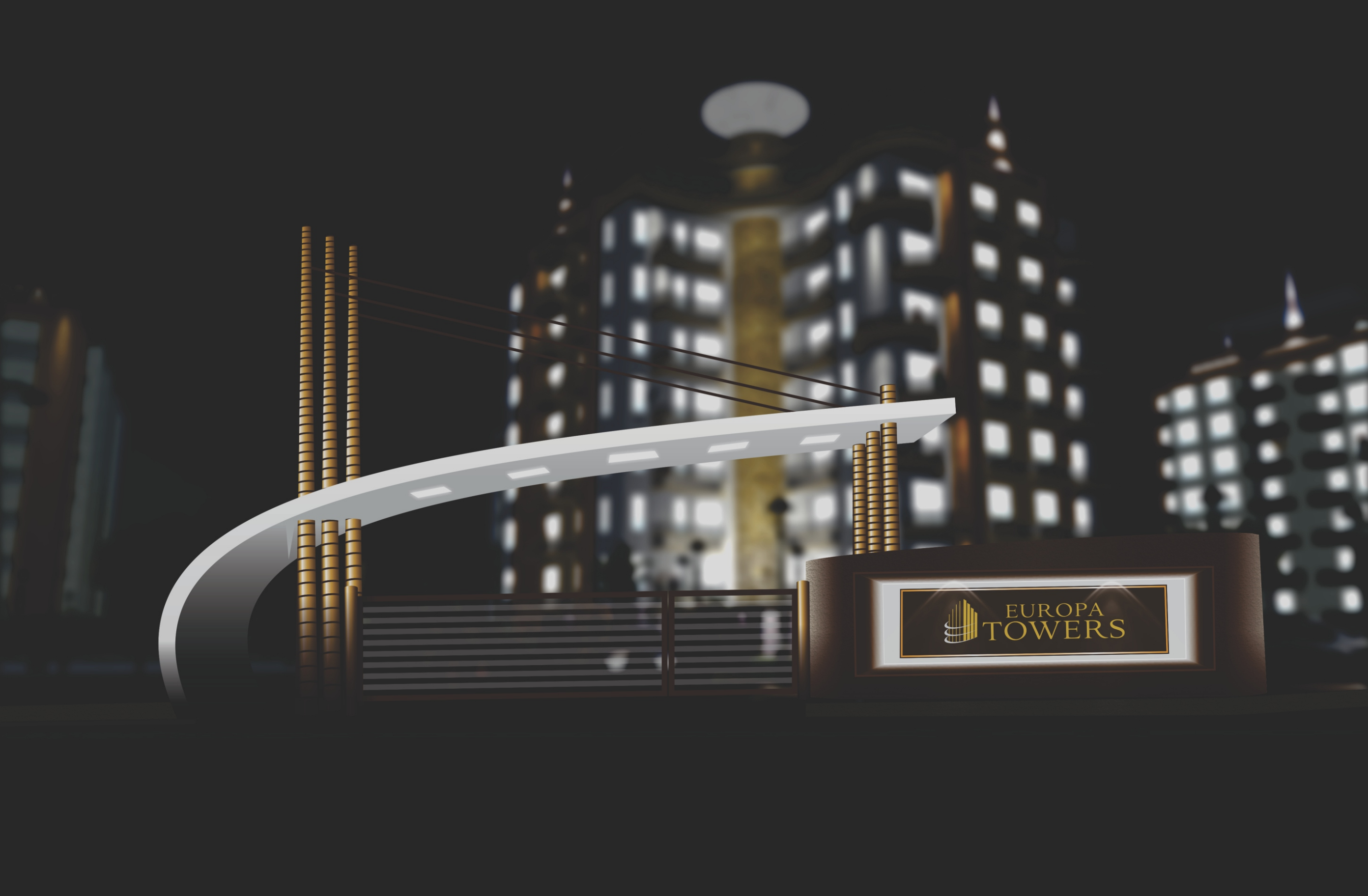
GOLDEN ABODE
MATIYARI CHAURAHA, LUCKNOW





PROJECTS DELIVERED







GOMTI NAGAR	0.60 KM	POLYTECHNIC	3.50 KM
SHAHEED PATH	1.00 KM	WAVE MALL	3.70 KM
KATAR LAKE	1.20 KM	GOMTI NAGAR RAILWAY STATION	3.90 KM
HIGH COURT	2.50 KM	HAZRATGANJ	8.50 KM
SAHARA HOSPITAL	3.40 KM	CHARBAGH RAILWAY STATION	12.25 KM
RAM MANOHAR LOHIA HOSPITAL	3.50 KM	CH. CHARAN SINGH INTERNATIONAL AIRPORT	20.00 KM



DISTANCE CHART



APPROACH MAP



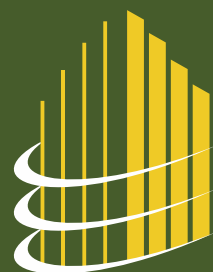
OUR ASSOCIATES

SILVER HOME DEVELOPERS
Real Estate

THE CREATION
Architects

THE CREATION
Constructions





EUROPA
INFRATECH

WWW.EUROPAINFRATECH.COM

**EUROPA INFRATECH
PRIVATE LIMITED**

5/4, VIPUL KHAND,
OPP. SRS CINEMA,
GOMTI NAGAR,
LUCKNOW 226 010

TELELEPHONE

+91 969 598 0786 / 979 443 8141

E-MAIL

vastu9415049274@yahoo.com