

POONAM
IMPERIA
Waliv, Vasai (E)




Site Office - Khan Complex, Poonam Imperia,
Besides The Ambassador School,
Behind Vithal Mandir, Waliv, Vasai (E). 401 208.
Call : 9048 777 288 / 9048 777 388

Head Office - A Wing,
1st floor, Poonam Avenue,
Global City, Virar (W) - 401 303
Tel.: 8446175757

Regd. Office - 319, Podar Chamber,
3rd Floor, 23-E, S.A. Brelvi Road,
Fort, Mumbai - 400 001

Email ID - imperia@poonamdevelopers.in • Website - www.poonamdevelopers.in

 MahaRERA Registration No. P99000017908 • Available at website: <http://maharera.mahaonline.gov.in>

Disclaimer: All plans, drawings, amenities, features, specifications, other information, etc. mentioned are indicative of the kind of development that is proposed and are subject to the approval of the respective authorities. All renderings, floor plans, pictures, perspective views of buildings and model furnished apartments and maps are the artist's conceptions and not actual buildings, wall, roadways or landscaping. Information given in this advertisement is not final or legally binding and is liable to change. Final discretion remains with the Developers.

Your domain brimming with beauty



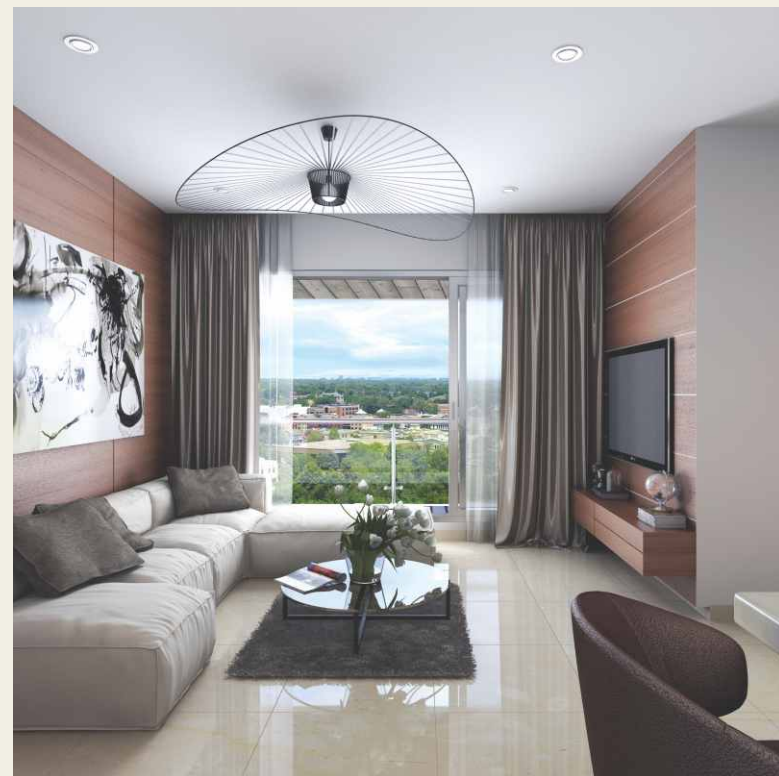
Artist's Impression



POONAM
IMPERIA

Splendid and magnificent in every way, POONAM IMPERIA is an elite community of 3 multi-storey towers ranging from 10 to 14 storeys. Situated on a lush plot, it is a spacious & well planned layout with adequate open spaces. Thoughtfully crafted, it is a unique mix of urban charm and sublime tranquility that unlocks the full potential of life with it's harmonious co-existence of nature, contemporary city living and luxurious lifestyle.

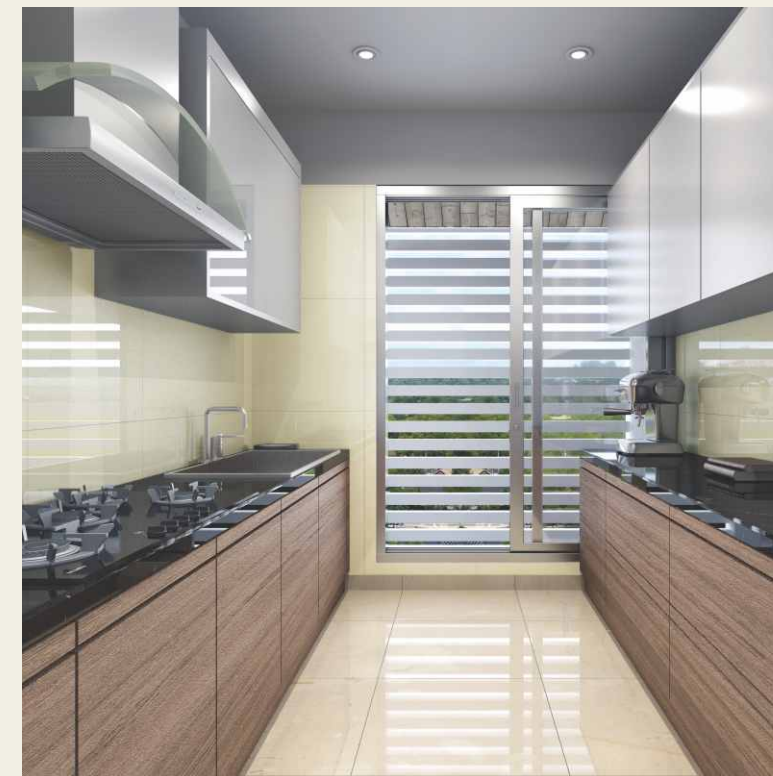




Living Room

POONAM IMPERIA offers elegant 1 & 2 BHK apartments. Each residence at POONAM IMPERIA is planned to perfection with every detail to maximize space, luxury and functionality. The elegant Living Room is your domain to live, laugh, laze and entertain.

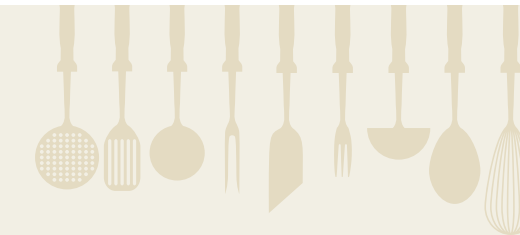
- Mirror finished vitrified flooring
- Anodized aluminum sliding windows with granite window stilts
- Plastered smooth finish with OBD paint
- POP wall finishing
- Main door with modern fittings & laminate finishing
- False ceiling in living room



Kitchen

The sleek contemporary kitchen high on functionality brings out the master chef in you.

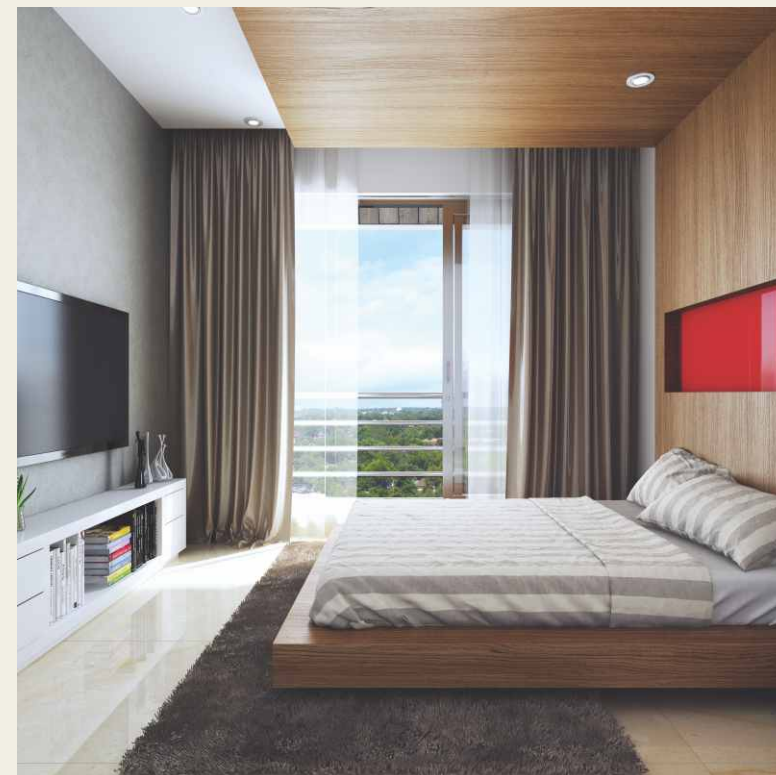
- Modular kitchen with granite top
- Stainless steel sink with service platform
- Ceramic tiles up to window level
- Drying yard in kitchen with washing machine outlet



Bedroom

Smart and sassy Bedrooms are your truly relaxing, stress-free private sanctuary.

- Mirror finished vitrified flooring
- Anodized aluminum sliding windows with granite window stilts
- Plastered smooth finish with OBD paint
- POP wall finishing

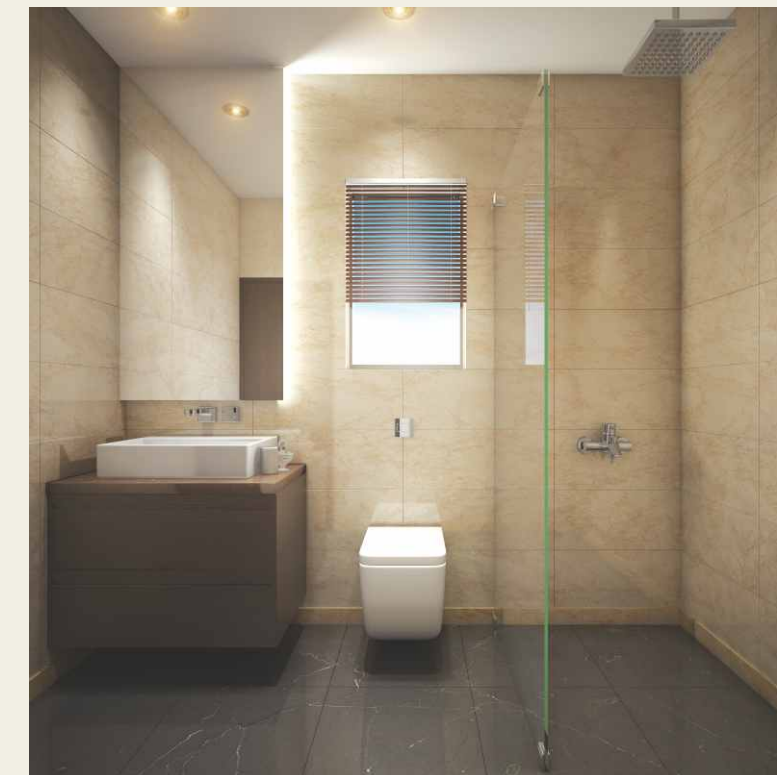


Images For Representation Purpose Only

Bathroom

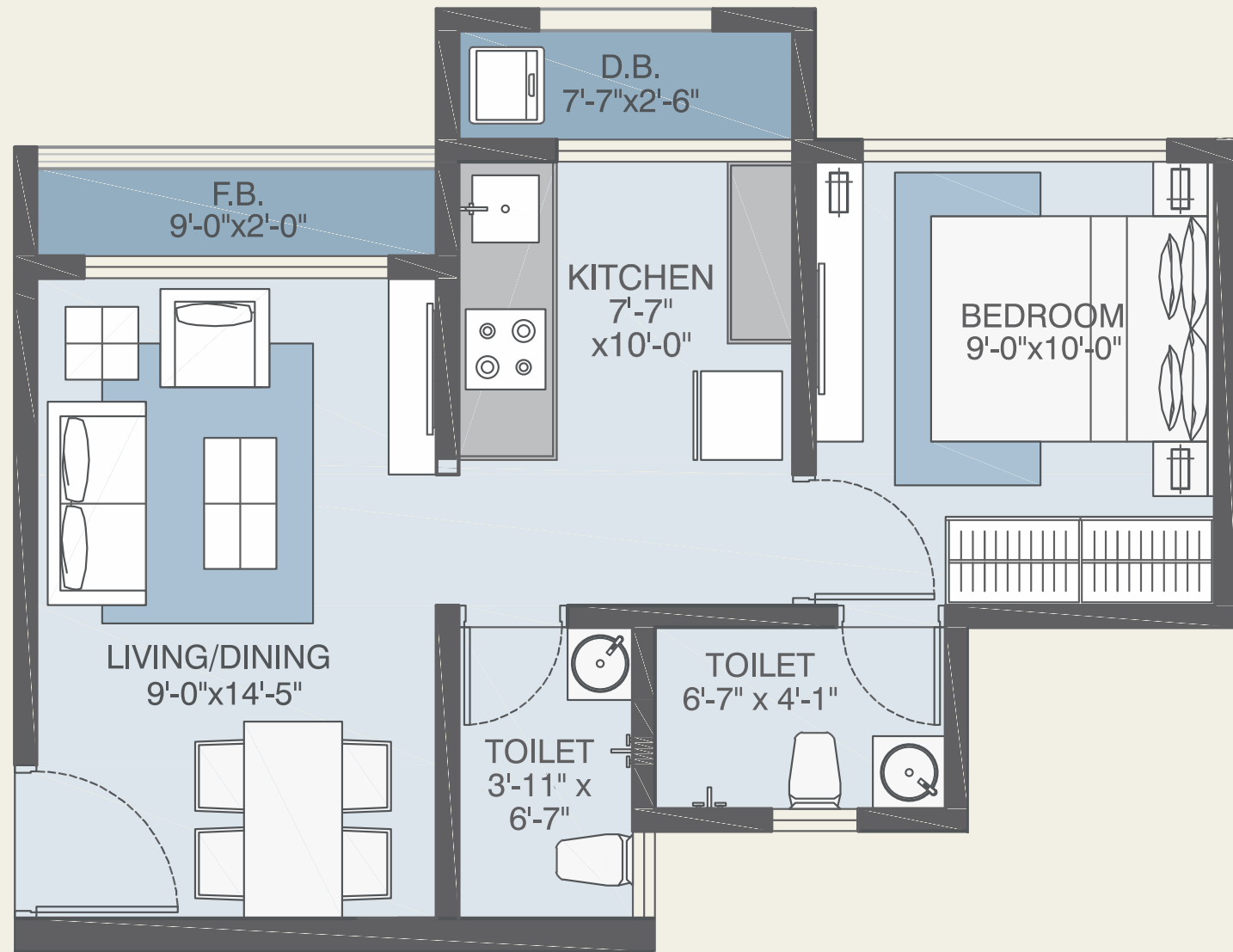
The bespoke designer bathrooms transform an ordinary experience in to an extraordinary lifestyle experience.

- Designer bathroom with tiles up to door height
- Granite door frame for bathroom
- Premium sanitary fittings
- Counter wash basin in master bathroom
- Anti-skid rustic tiles
- Branded CP fittings
- RCC loft with water tank over each bathroom
- Hot & cold mixture for showers only



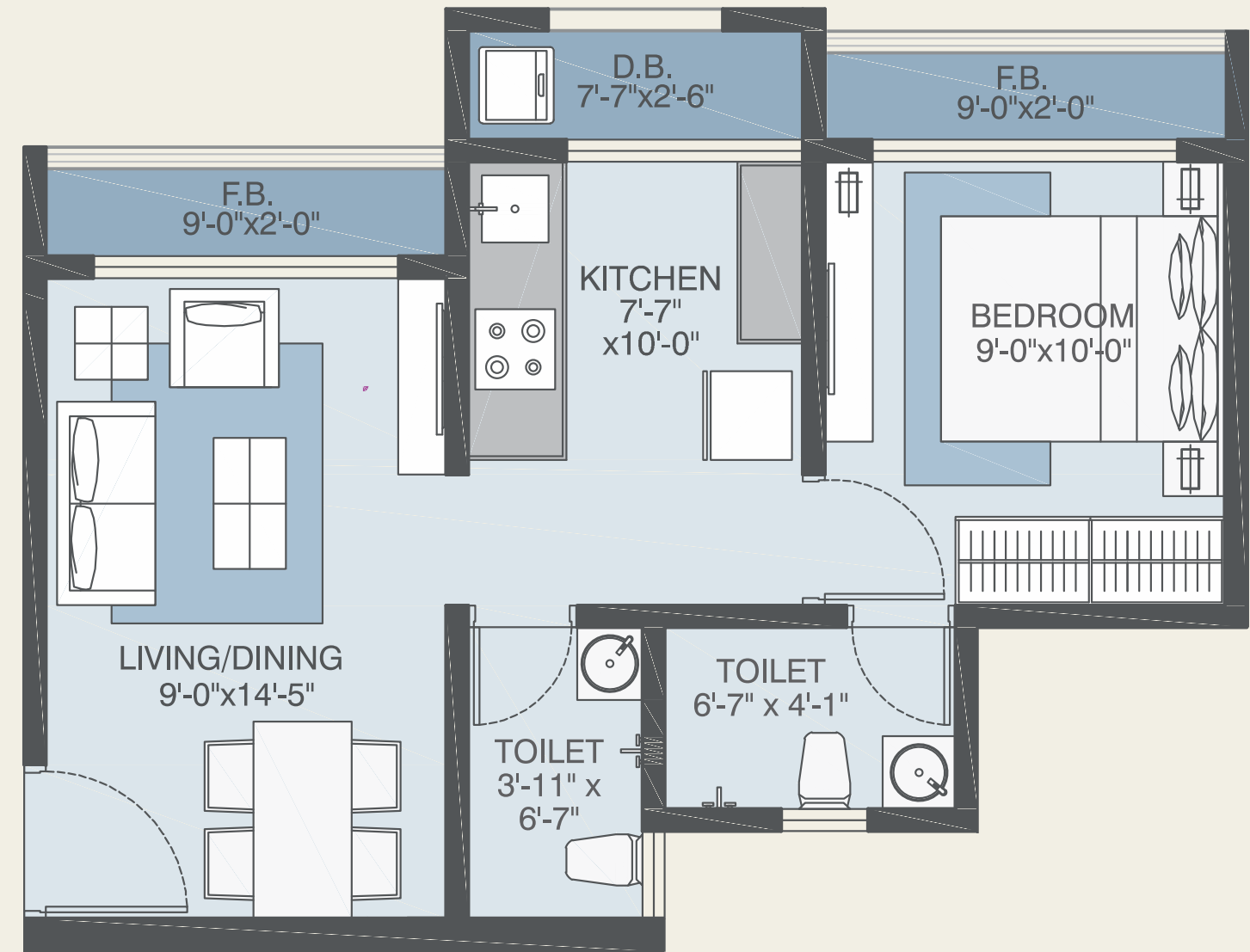
Images For Representation Purpose Only





RERA CARPET	356 Sq.Ft.
USABLE AREA	394 Sq.Ft.

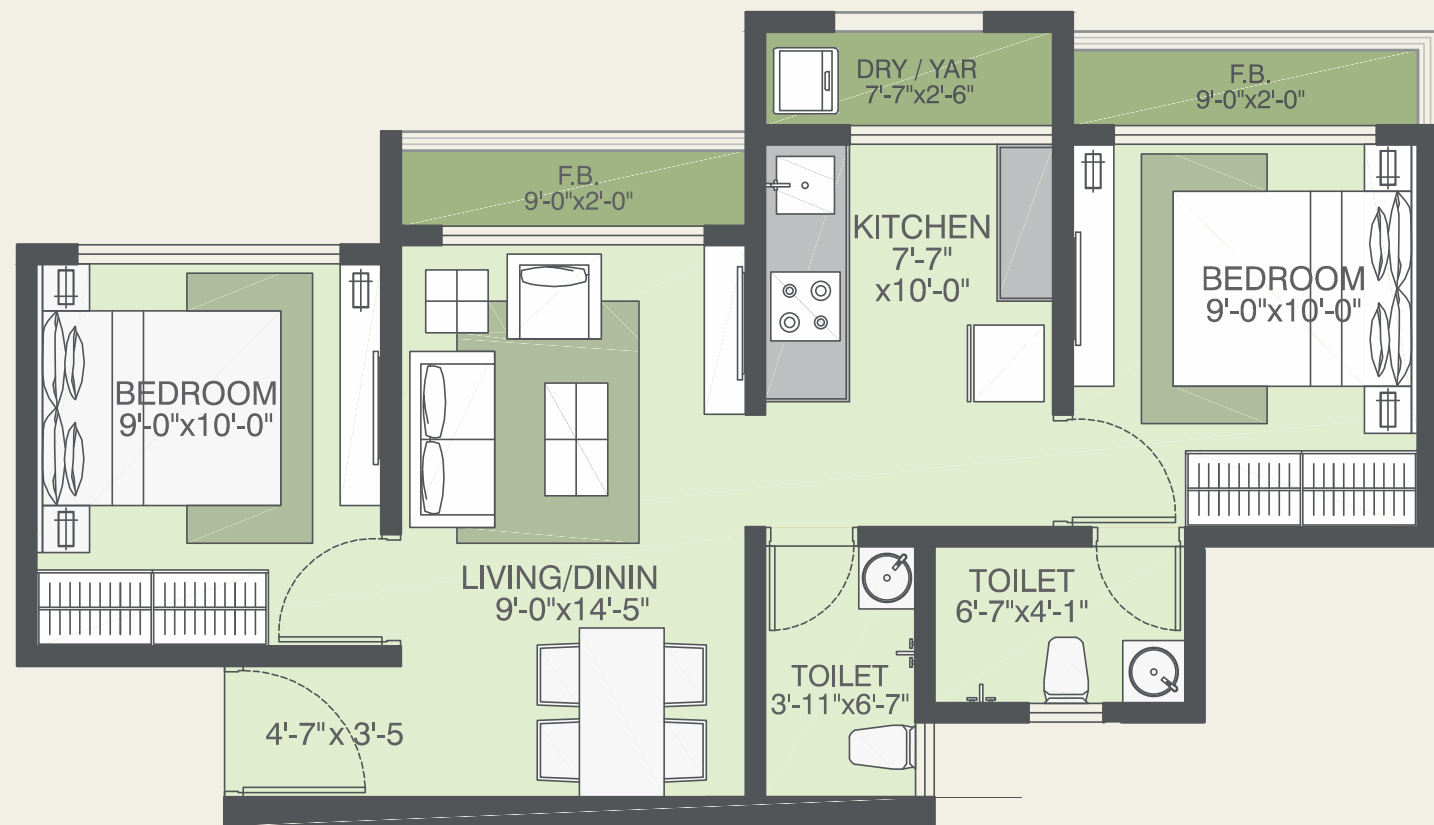
TYPICAL - 1 BHK UNIT



RERA CARPET	356 Sq.Ft.
USABLE AREA	412 Sq.Ft.

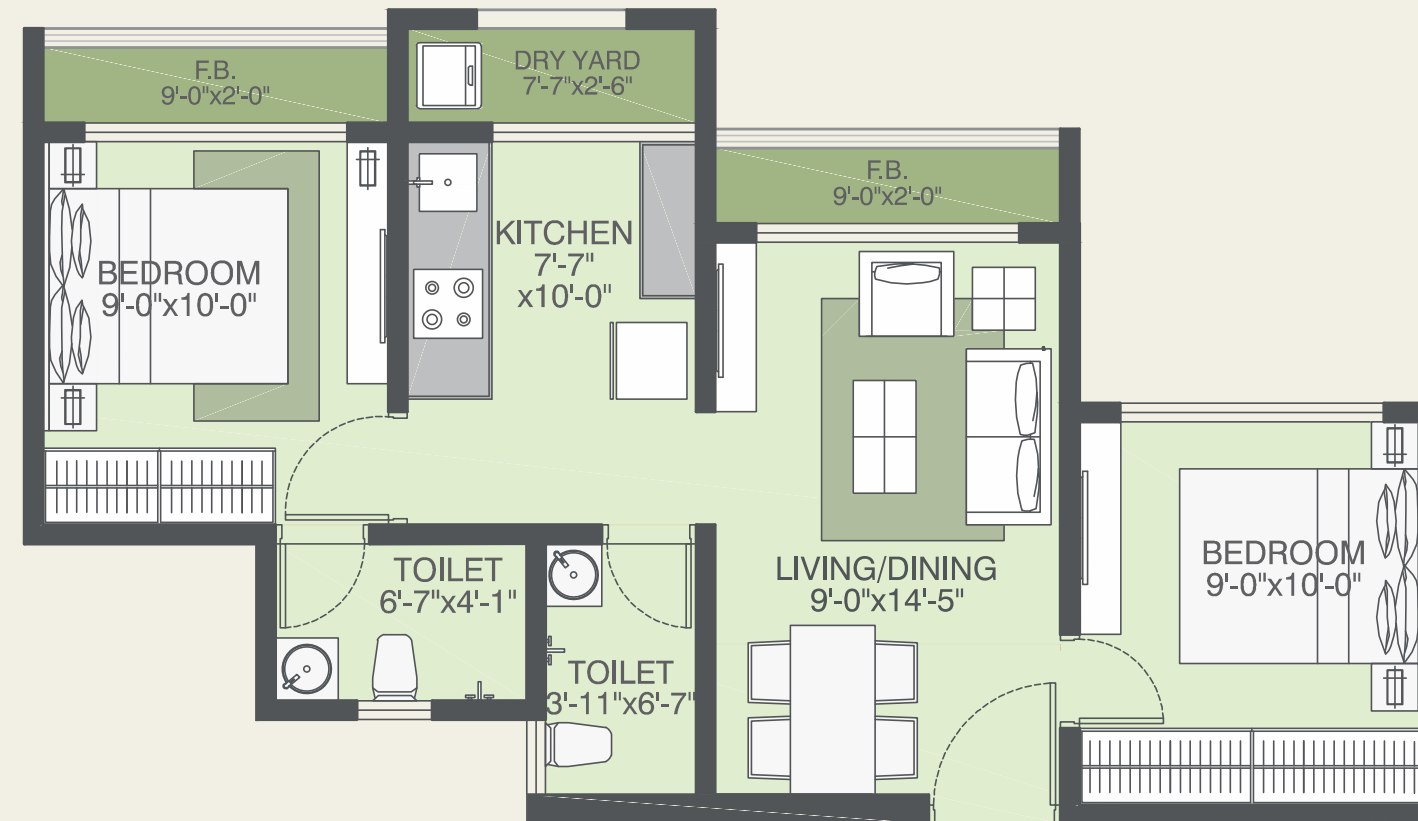
TYPICAL - 1 BHK UNIT





RERA CARPET	440 Sq.Ft.
USABLE AREA	518 Sq.Ft.

TYPICAL - 2 BHK UNIT



RERA CARPET	430 Sq.Ft.
USABLE AREA	505 Sq.Ft.

TYPICAL - 2 BHK UNIT





GARDEN AMENITIES

- Jogging track
- Sitting area
- Gathering Lawn
- Amphitheater with stage paved
- Stepping Stones
- Senior Citizen Sitting Area
- Gazebo
- Lawn Mound
- Kids & Toddler play area
- Multi purpose sports court
- Net Cricket



Life at POONAM IMPERIA revolves around the buzz words-Connectivity, Convenience & Comfort as all major needs and conveniences like School's, Colleges, Hospitals, Shopping Malls, Entertainment and Recreational Facilities, Multi-cuisine Restaurants etc. are in its immediate neighborhood.

POONAM IMPERIA is indeed a perfect fusion of thoughtful spaces, privileged lifestyle, exemplary location and excellent connectivity to make your living experience extraordinary.

Vasai Railway Station - 20 min	Vidya Vikasini Junior College - 15 min
Highway - 6 min	The Ambassador High School - 1 min
Platinum Hospital - 12 min	Dreams Mall, Carnival Cinema - 13 min
Vithal Mandir - 3 min	Decathlon - 7 min

OUR PRESTIGIOUS PROJECTS

COMPLETED PROJECTS

POONAM KALPAVRUKSHA Virat Nagar, Virar (W)	POONAM NAGAR Viva College Rd, Virar (W)	POONAM ORCHID Yashwant Nagar, Virar (W)	POONAM SUPREME Tirupati Nagar, Virar (W) PHASE 2
POONAM ACORN Tirupati Nagar, Virar (W) PHASE 1	POONAM AURA Padmavati Nagar, Virar (W)	POONAM EVEREST Shriprastha, Nallasopara (W)	POONAM AVENUE Global City, Virar (W)
POONAM PALLAZO Nallasopara (W)	POONAM IMPERIAL Near Global City, Virar (W)	POONAM HEIGHTS HDIL LAYOUT, Virar (W)	

ONGOING PROJECTS

POONAM PARK VIEW Global City Virar (W)
--

OUTDOOR AMENITIES

- Branded elevator
- Ample parking space
- Grand entrance lobby
- Rain water harvesting system
- Generator backup for lifts, pumps and common areas

