

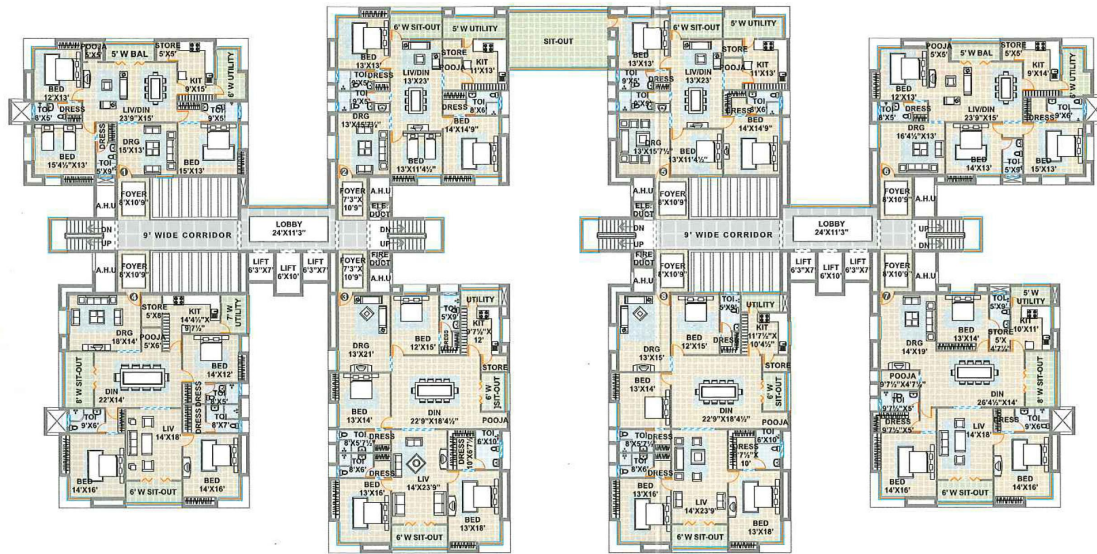
Love at first site



sky 
LOUNGE
At Cyberabad



PEGASUS
Typical Floor Plan

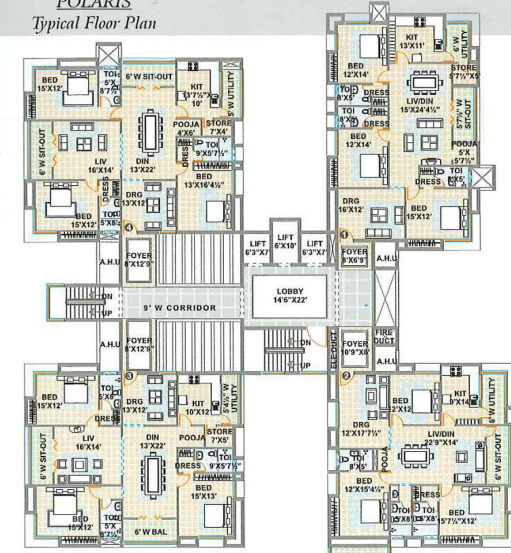


Area statement

Flat	Area in sq.ft.
1	2425
2	2425
3	3620
4	3125
5	2770
6	2460
7	3175
8	3600



POLARIS
Typical Floor Plan



Area statement

Flat	Area in sq.ft.
1	2415
2	2295
3	2615
4	2630
5	2680
6	2425
7	2610
8	2625



PHOENIX
Typical Floor Plan



Area statement

Flat No.	Area in sq.ft.
1	2365
2	2340
3	3645
4	3005
5	2705
6	2350
7	2985
8	3650



Specifications

Flooring:

2/2 Vitrified tiles for entire area with premier quality slabs
Toilets with non-slippery ceramic tiles of premier quality

Toilets & Accessories:

Designer ceramic tiles dadoing up to 7 feet height.
Light colored EWC / IWC and washbasin of reputed make like parry, Hindustan etc

Joinery:

Main Door:

Teak wood frame and teak wood paneled shutter with designer hardware of reputed make

Internal Doors:

Teak wood frames with veneer shutters with polishing and standard hardware

Windows:

Glazed anodised aluminum windows with suitable sections to withstand wind velocity

Kitchen:

Black granite kitchen platform with stainless steel sink / granite sink
2' dado with glazed tiles above granite kitchen platform

Telecom:

4 pair cable to all the units
Intercom facilities to all the units connecting security

Water Supply:

Treated soft water supply from bore well and municipal corporation

Lifts:

Three lifts for each tower (2 Nos. passenger lifts of 10 persons capacity and one goods lift) of Johnson or reputed make

Parking:

2 cars parks for each unit.
Covered visitor parking

Amenities

Club House:

- Area admeasuring about 25000 sft. will be provided

Indoor Games:

- Table Tennis - 2 Nos
- Pool Tables - 2 Nos
- Chess, Carom and other indoor games
- Squash Court - 1 Nos

Outdoor Games:

- Tennis Court - 1 No
- Basket Ball Court - 1No
- Swimming pool with toddlers pool with necessary filtering equipment

Common Amenities:

- Air - conditioned well equipped Gym
- Steam / Jacuzzi bath
- Banquet hall for 400 people with kitchen & pantry
- Yoga & Meditation hall
- Library
- Guest Suites - 8 Nos
- Beautiful Landscaped Gardens
- Jogging track
- Children's play area

Backup Generator:

- Stand by soundproof generator for clubhouse and for common area, lifts, water pumps, and 200 w power points in each flat

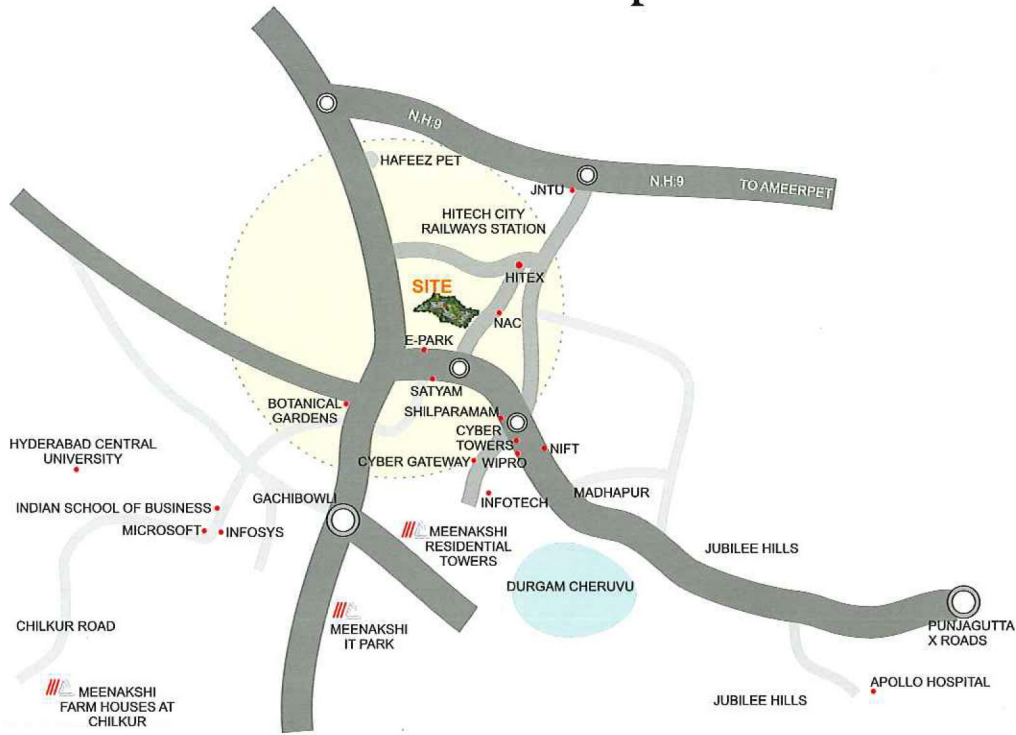
Security:

- Access controlled entry gate
- Round the clock security
- Every house will be connected to security office through intercom video phone
- Access cards for the residents
- Identity cards for the servants

Infrastructure Facilities:

- Intercom to all houses & security
- Centralized gas lines connected to all kitchens
- Solar heating system & solar avenue lighting
- Under ground drainage system
- Under ground electrical, communication cabling and gas pipelines
- Water and sewerage treatment plan
- Storm water drainage system
- Compound wall all around the layout with solar fencing
- Rain water harvesting pits

Location Map



promoters



Meenakshi Infrastructures Pvt. Ltd

Meenakshi House, 8-2-418, Road#7, Banjara Hills, Hyderabad - 500 034

Tel: +91-40-23358111 / 222 / 333, Fax: +91-40-23351133

E-mail: info@meenakshigroup.net

www.meenakshigroup.net

Architects



HYDERABAD : # 115,116, Model House, Punjagutta, Hyderabad - 500082

Ph: 040-2335 0278, 2335 0279

PUNE : 114, commercial wing, Parmer Park, Wanowrie, Pune - 40.

Ph: 020-6561 2505, 4009 1619.