

SHUBHAMKAROTI
AARAMBH

A Project By **SHUBHAMKAROTI INFRATECH LLP**

Live 100%

Spirituality

Come close to divinity

Happiness

To create beautiful memories.

Holistic Approach

To stress the significance of maintaining a healthy work-life balance.

Connectivity

To provide seamless connectivity and boundless opportunity.

Quality Living

To build architecturally timeless and functional designs that endure for generations.

Living 100% is about embracing a holistic and balanced approach to life, where we are encouraged to thrive in various aspects, from personal growth and relationships to experiences and well-being.

It's a call to live with intention and make the most of every opportunity.

Embrace Happiness

Live Life 100%

Where Every Moment is a Masterpiece and Every Day is Blissful.

Create a lifetime of beautiful memories envisioned with holistic living at its core; these homes come with immersive lifestyle amenities.

Crowning its glory are the thoughtfully designed rooftop amenities that catapult a distinguished lifestyle to a new high.

Experience Excellence

Quality Living

Elevate your Life & Explore Comfort Living.

Quality at Core | Modern by Appeal | Contemporary in Aesthetics

This is the three-pronged approach we have adopted to design homes and common areas.

Luxury is no longer a question of price but a matter of choice. **Shubhamkaroti Aarambh** is evolving the term 'luxury', defined by top-notch fittings and fixtures, functional homes with well-defined spaces that reflect your lifestyle.

We take great pride in delivering an elegant lifestyle embraced within architecturally timeless and functional designs that endure for generations.

FEATURES

-  Magnificent Edifice ~ 70 Meters above sea level
-  Ground + 23 Storey with Residential & Commercial spaces
-  Grand Entrance Lobby
-  Vastu Compliant 1 BHK & 2 BHK Apartments
-  Dedicated Gymnasium space on 2nd Floor
-  Earthquake Resistant Construction
-  Rooftop Amenities for All Age Groups
-  3 High Speed Elevators
-  Fire Safety Infrastructure
-  24 x 7 CCTV Surveillance
-  Car Parking
-  Dedicated washing machine space
-  Dedicated space for outdoor unit



Artist's Impression

Make A Grand Statement With An Elegantly Designed Lobby

To Welcome You.

SPECIFICATIONS

FLOORING

- Premium Vitrified tiles in all rooms
- Anti skid flooring in toilet & bath

KITCHEN

- Natural Stone kitchen platform
- Branded SS Sink
- Designer wall tiles upto beam bottom
- Provision for Fresh air exhaust fan
- Provision for Water Purifier
- Electric points for Fridge & W. Machine

BATH & WC

- Quality Concealed plumbing
- Designer Bathroom with modern sanitaryware
- Designer wall tiles upto beam bottom
with Anti skid floor tiles
- Natural stone / E Slab door frame
- Brand designer C. P. fittings
- Provision for Fresh air exhaust fan
- Provision for hot water geyser for shower

DOORS & WINDOWS

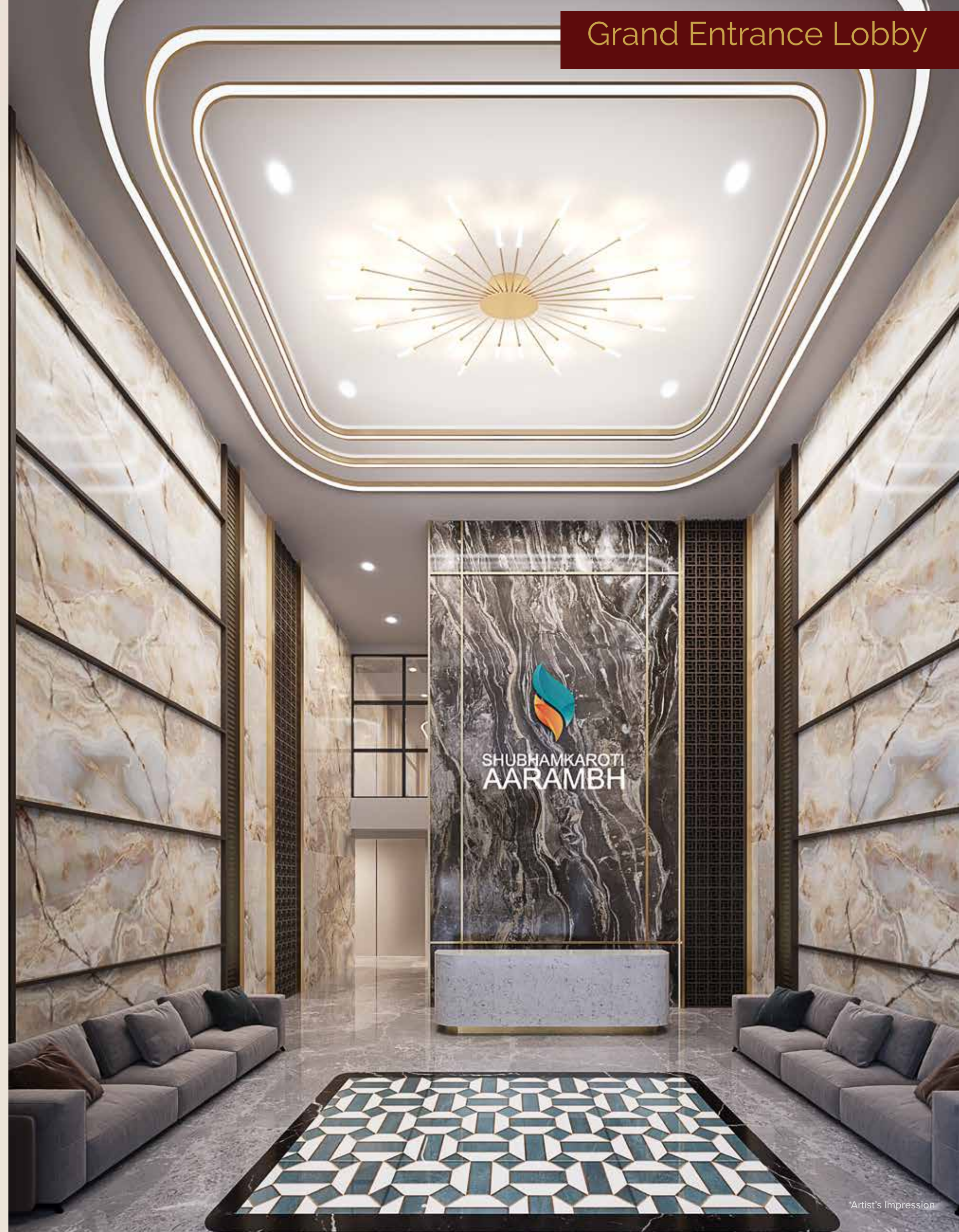
- Fire rated flush doors with elegant handles and locks
- Designer laminated flush doors with elegant handles & branded locks
- Wooden door frames for main door & bedrooms
- Anodised / Powder Coated Aluminium sliding windows with one way glasses
- Mosquito net in each window
- Natural Stone / E Slab window shutter framing
- MS Railing / Grill on windows

WALLS & PAINT

- Gypsum finished internal walls
- Quality paint on Internal & External walls
- Art inspired exterior texture walls

ELECTRIFICATION

- High grade concealed wiring with MCB
- Modern Modular Switches with circuit breakers
- Adequate Electric, AC & TV points
- Internet cable provision





*Artist's Impression



Kids Play Area



Jogging Track



Senior Citizen's Corner



Cabana



Yoga Meditation Zone



Mini Sports Turf



Sky Deck



Lounge Seating Area



Barbeque Zone



Screening Zone

Unwind and Rejuvenate

Relaxation

Your Oasis of Serenity

Experience the harmony of holistic living with what we call not just amenities but Deserving Indulgences for your loved ones.

Typical Floor Plan



UNIT	RERA CA	FLAT NO.
1 BHK	325 SQ.FT.	1 & 7

UNIT	RERA CA	FLAT NO.
1 BHK	370 SQ.FT.	2

UNIT	RERA CA	FLAT NO.
1 BHK	405 SQ.FT.	4 & 5

UNIT	RERA CA	FLAT NO.
2 BHK	526 SQ.FT.	3 & 6

Linking You to Limitless Possibilities

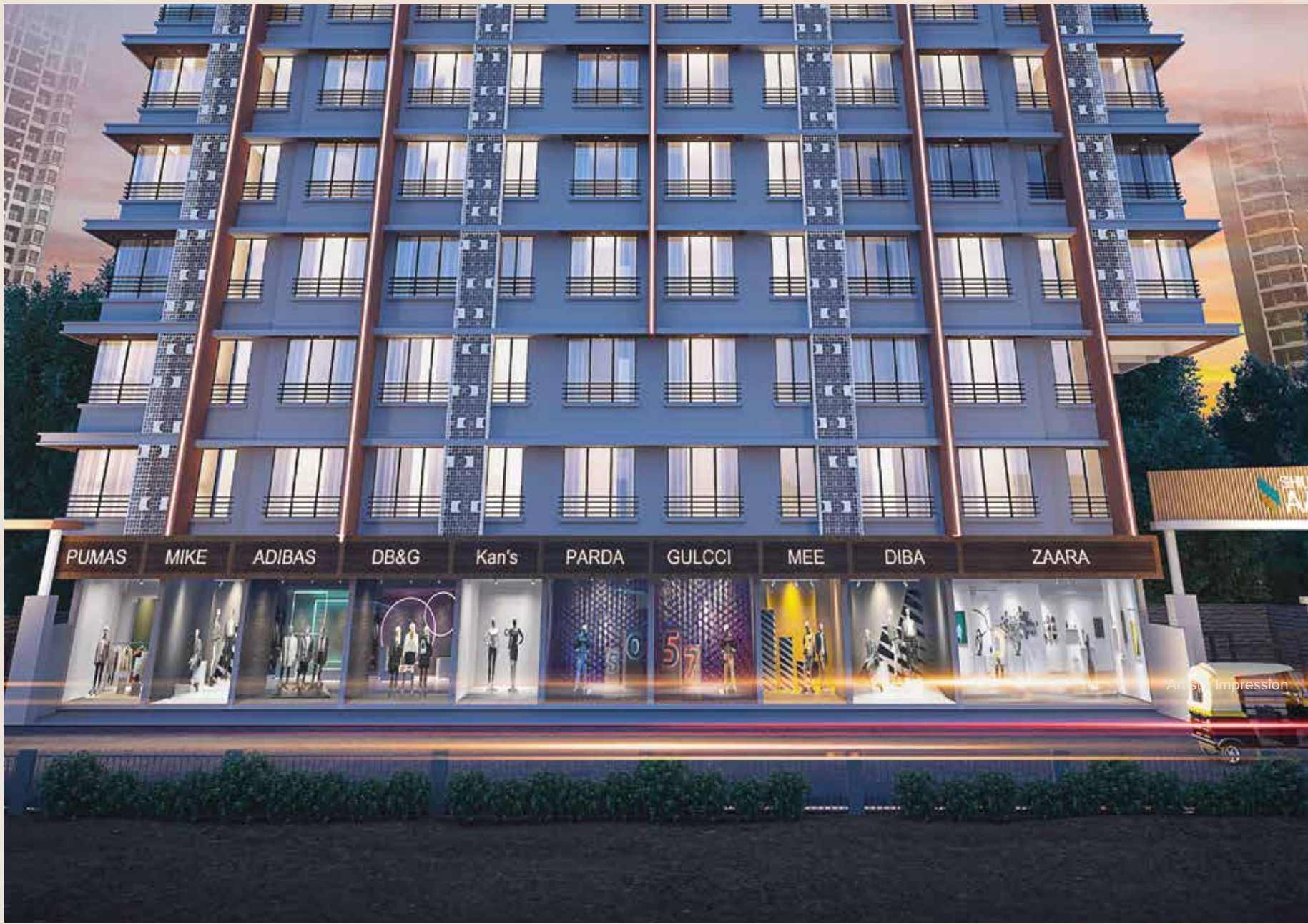
Connectivity

Your Oasis of Serenity

At Shubhamkaroti Aarambh, luxury seamlessly blends with a life of comfort, offering an array of contemporary amenities and excellent connectivity at your fingertips. Within a brief stroll, you'll discover prestigious educational establishments and government institutions, reputed medical facilities, convenient shopping options, leisure destinations, and beautiful green spaces.



Space that breathes Life into Luxury



A Project By



SHUBHAMKAROTI INFRATECH LLP

BUILDERS & DEVELOPERS

We Build Your Dream

— Strategic Partner —



One S K™
Real Estate Advisory

Architect

M/s Sai Sampada Design Build Services

RCC Consultant

M/s Associated Structural Engineers LLP

Legal Advisor

M/s Vichare & Associates

Contractor

M/s Ashwamegh Construction

MEP Consultant

M/s Specialised MEP Engg. Consultants

Site Address: Building No. 100, K. N Shatabdi CHS Ltd., Kannamwar Nagar- 2, Vikhroli (E) Mumbai- 400083.

Reg. Office: B-28A, Shivsai Society, Patelwadi, Asalpha Metro Station, Nari Seva Road, Ghatkopar (W), Mumbai- 400084.

Email: shubhamkarotiinfratech@gmail.com | **website:** www.shubhamkarotiinfratech.com

Sales Contact Numbers: +91 8877- 447244 / +91 9833-788887

Disclaimer: The information contained in this brochure is indicative of the kind of development that is proposed. It is prepared and issued in good faith and is for guidance only. It does not constitute part of any offer or contract. It is subject to the approval from the respective authorities. In the interest of the continuing improvement of the project and or any changes as suggested by the authorities or the Developers reserve the right to alter the Layout, Plans, Specifications, Amenities or features of the buildings without any prior notice or obligation to any buyer's in the project. The photographs and the artists impressions in the brochure are for reference only. All the amenities provided are subject to availability in the market and approval of authorities. The furniture & fixture shown in various plans are for illustration purpose only. The 3D Images are provided to enable the allottees to visualize the flat with furniture and furnishing. The Furniture and furnishing are not provided by the developers and the final look and feel of the flats is dependent on various factors like type / style of interior, furniture layout etc. and the developers have no role in the same.

MahaRERA Registration No.: P51800053185

Project is available on the website <https://maharera.mahaonline.gov.in> under registered projects.

