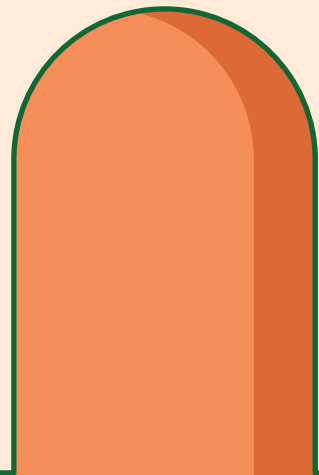
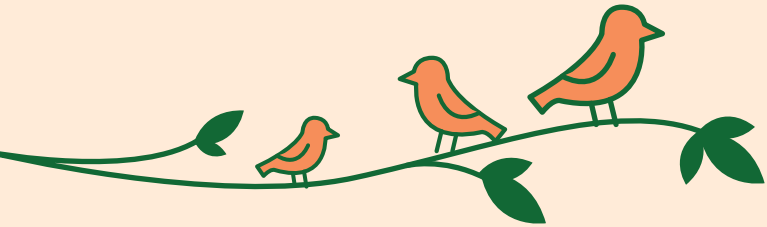




2 & 3 BHK Thoughtful Homes





Enter
A Green Heaven;
Designed
Thoughtfully...
For You



- 1 Garden With Gazebo
- 2 Club House
- 3 Single Cricket Pitch
- 4 Swimming Pool
- 5 Indoor Games (In All Buildings)
- 6 Children Play Area (Podium)
- 7 Landscape Garden & Multi-Function/
Party Area (In All Buildings)
- 8 Badminton & Basketball Court (Podium)
- 9 Stargazing Area
- 10 Hopscotch
- 11 Open GYM
- 12 Acupressure & Yoga Area

Layout Plan



Impressive
Exteriors
For **Expressive**
Interiors.





Escape the ordinary,
Escape To
A Better Lifestyle
Here At Greenville

The brainchild of creators who uphold impeccable design standards, Greenville is first and foremost, a home that suits both: your needs and your budget! Coupled with the right amenities for all, and a location that is easily accessible, this is your one, true thoughtful home!





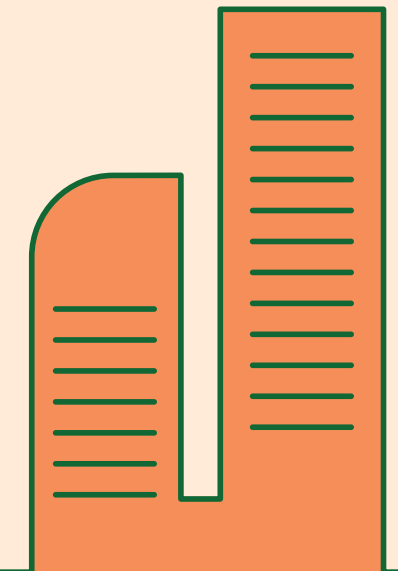
Artistic Impression



Artistic Impression



Artistic Impression



Thoughtful Homes

That Stand For
Convenience

Comfort and

Unparalleled Construction

The home of your dreams can also fit your budget, here, at Greenville. Our 2 and 3 BHK thoughtful homes are designed to perfection, giving you an abode that grants the utmost comfort and solace. Prominently located amidst the hubbub of the buzzing locale, the convenience at Greenville is Utopian, the Amenities and specifications offered are unbeatable.





Amenities



Club House



Swimming Pool



Multi Sports Area



Children's Play Area



Grand Entrance Lobby



Indoor Games



Open Party Area



Yoga & Meditation Space



2 Level Parking



3 Level Security With Access Control



Open & Close GYM



Landscape Rooftop Terrace In All Buildings



Stargazing With Telescope



Acupressure



Hopscotch



Garden with Gazebo

Specifications



STRUCTURE

- Earthquake Resistant RCC Structure



BRICKWORK

- External & Internal Brickwork In AEC Blocks



WINDOWS

- Eurosection Aluminium Powder Coated Windows
- Windows With Mosquito Mesh
- Granite/ Vitrified Tile Sils In Bay Window



FLOORING

- Glazed Vitrified Flooring 800 X 1600
- Anti-skid Tiles In Terrace & Dry Balcony



ELECTRICAL

- Schneider Electrical Switches
- Provision To Fit Inverter
- Sufficeint Light Points
- Footlamps In Bedrooms & Living



ECO-FRIENDLY INITIATIVES

- STP
- OWC Machine To Recycle Wet Waste
- 100% Dg Backup For All Common Lights & Lifts
- Solar Water Heater In One Bathroom
- Rain Water Harvesting



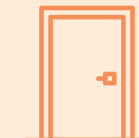
DESIGN

- Designed For Better Light & Ventilation
- Optimum Use Of Space
- Designed To Fit All Furniture Properly



KITCHEN

- Parallel Kitchen In 3bhk & L-Type In 2bhk
- 2 Sinks
- Provision For Exhaust Fan & Chimney
- Provision For Water Purifier
- Provision For Microwave, Mixer Grinder & Other Appliances
- Glazed Tile Above The Kitchen Platform Upto 2 Ft.



DOORS

- Modular Door Frame
- Laminated Doors
- Mortise Handles





SECURITY

- CCTV Enabled Security System
- Access Control To All Building At Ground & Basement
- Video Door Phone
- 3-level Security System



COMFORT & CONVENIENCE

- AC Points In All Bedrooms
- Telephone Point In Living Room
- Common Satellite Cable TV Wiring In Living Room



BALCONY

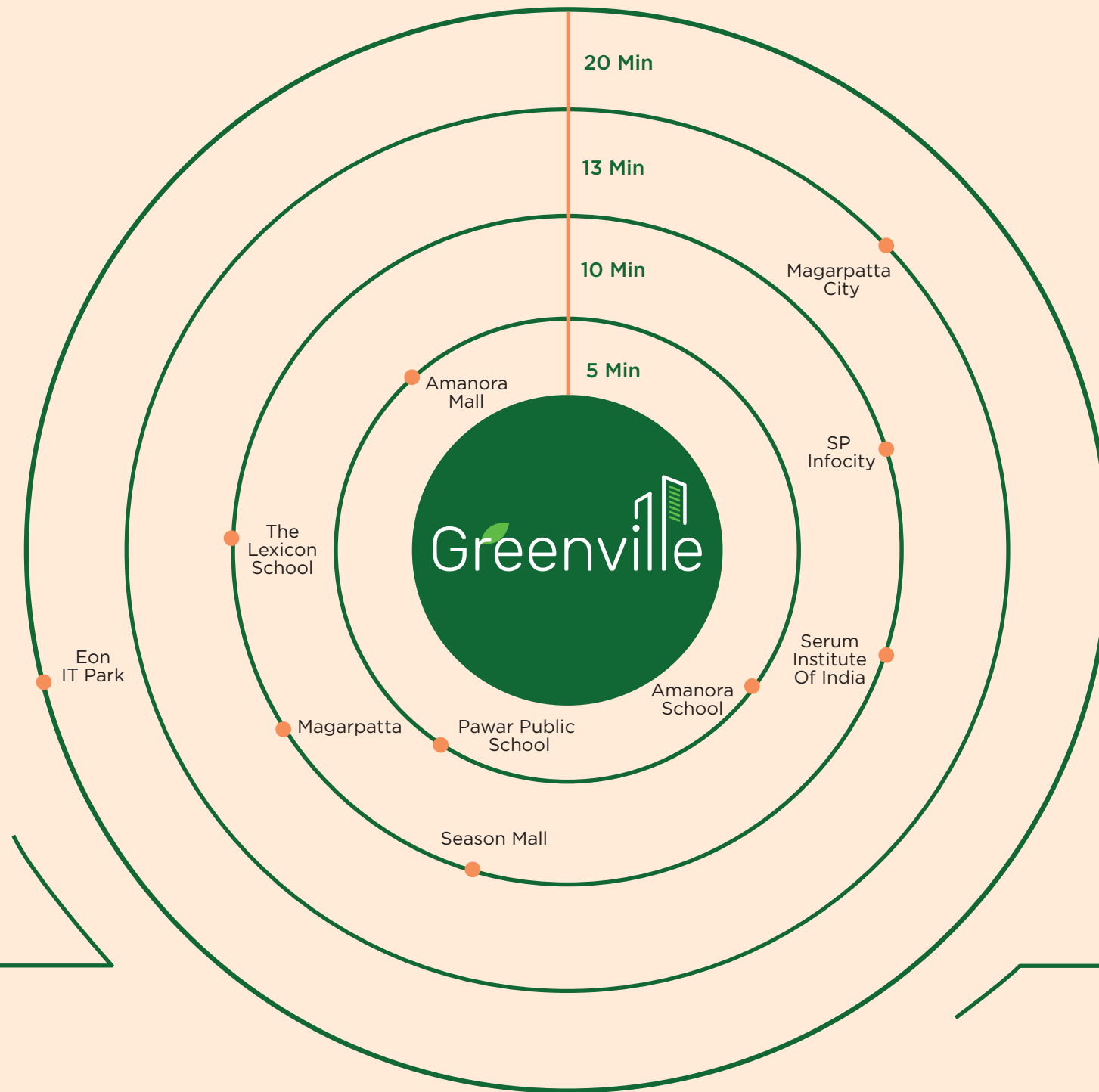
- Anti-skid Wooden Finished Plank Tiles In Balcony
- Stainless Steel Railing With Toughened Glass



WASHROOM

- Designer & Excellent Detailing In Toilet With 4 X 2 Tiles
- Anti-skid Flooring
- Jaquar CP Fittings
- Hindware Sanitary Ware
- Geberit Flushing System
- Epoxy Grout
- Over The Counter Wash Basin
- Rimless WC





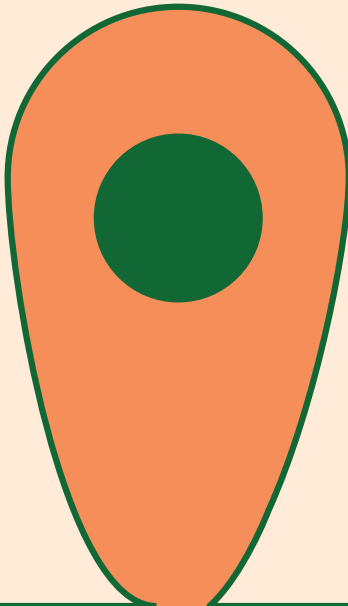


Quality Living

All Day,

Every Day

Just the right choice for you to live your dream in the big city, Greenville provides you with the opportunity to be in close proximity to the vibrant and accessible job-scape of Pune. Strategically located on DP, Road, Hadapsar, our thoughtful spaces are here to help you open doors to new opportunities, with each passing day.



Key Distances



Credits

Design Architect:

Spiro Design

Liaison Architect:

Prakash Kanhekar

Legal Advisor:

Adv. Pradeep Nanajkar

RCC Consultant:

Sunil Mutalik & Associates

Landscape:

Christopher D' Lima

Brand Consultant:

The Uncommons Design

Developers:

Vision Realtors


Part joint venture with Kamthe Family

Corporate Office :

8th Floor, 801, CITY SQUARE, Behind Rahul Cinema,
Narveer Tanaji Wadi, Shivajinagar, Pune, Maharashtra 411005

Site Office :

S. No. 211/4A, 211/11 Part at
Hadapsar, Haveli, Pune, 411028

 MahaRERA No. P52100028126

Step Into

A Sense Of

Convenience.

