

VANSH
VIVA

Luxury Residences @ Kiwale



VANSH
VIVA

You Deserve this

Vansh Viva is a mixed-use complex targeted at luxury loving and sophisticated customers. Presenting a new wellness metropolitan lifestyle, it possesses impressive connections to all major landmarks. You won't have to compromise on anything as everything you could possibly desire is at your fingertips. Discover the best of both worlds. A place where urban life seamlessly connects with nature, where innovative design meets the highest standards of craft, we have created an environment that calms the human spirit and brings people together.

Discover Viva.

*A Status symbol for many,
A Prestigious address for a few...*



*Welcome to
Vansh Viva*

Every aspect of Viva has been designed to maximize light, air and the natural beauty.





Blissful Gateway

In a fast-paced world where people are branching out of their homes to live separately, We want to introduce you to "VIVA" as our passion to create landmarks that meet global standards and are built on a legacy of Trust. There is no greater joy than rekindling and reconciling with your loved ones. Raj Vansh Group wants to bring that joy and delight to you. Viva is for those who truly deserve the luxury of living with their family. It is for those who want to experience luxury, not just alone, but with their kin.







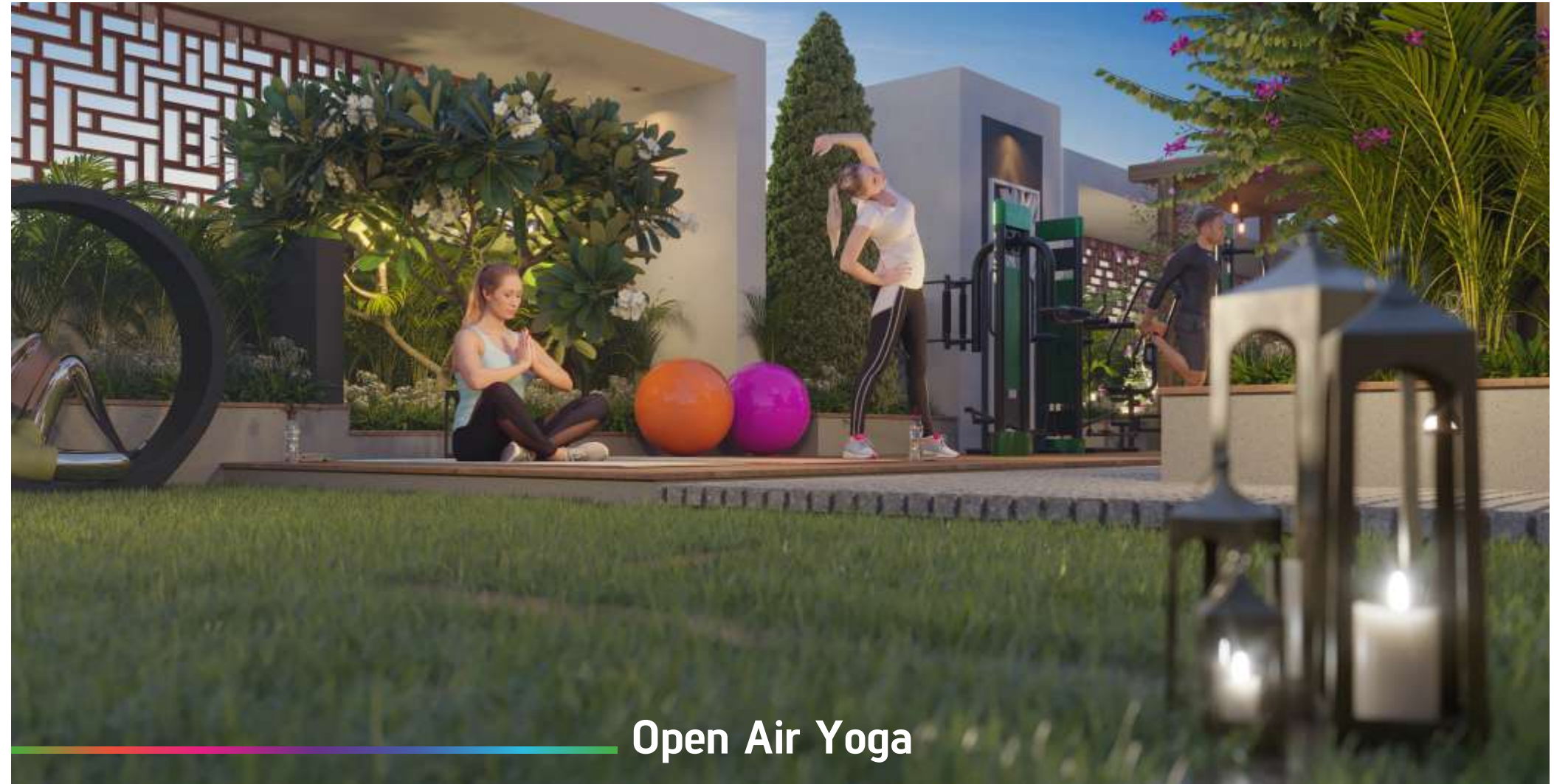
Ease of shopping

The residences facilitate a little extra sunlight and natural breeze allowing you to experience airy living. The project is superbly connected to all things essential and you will have convenience at your doorstep, always. So, come to Vansh Viva and get used to the extras, life will extend your way.

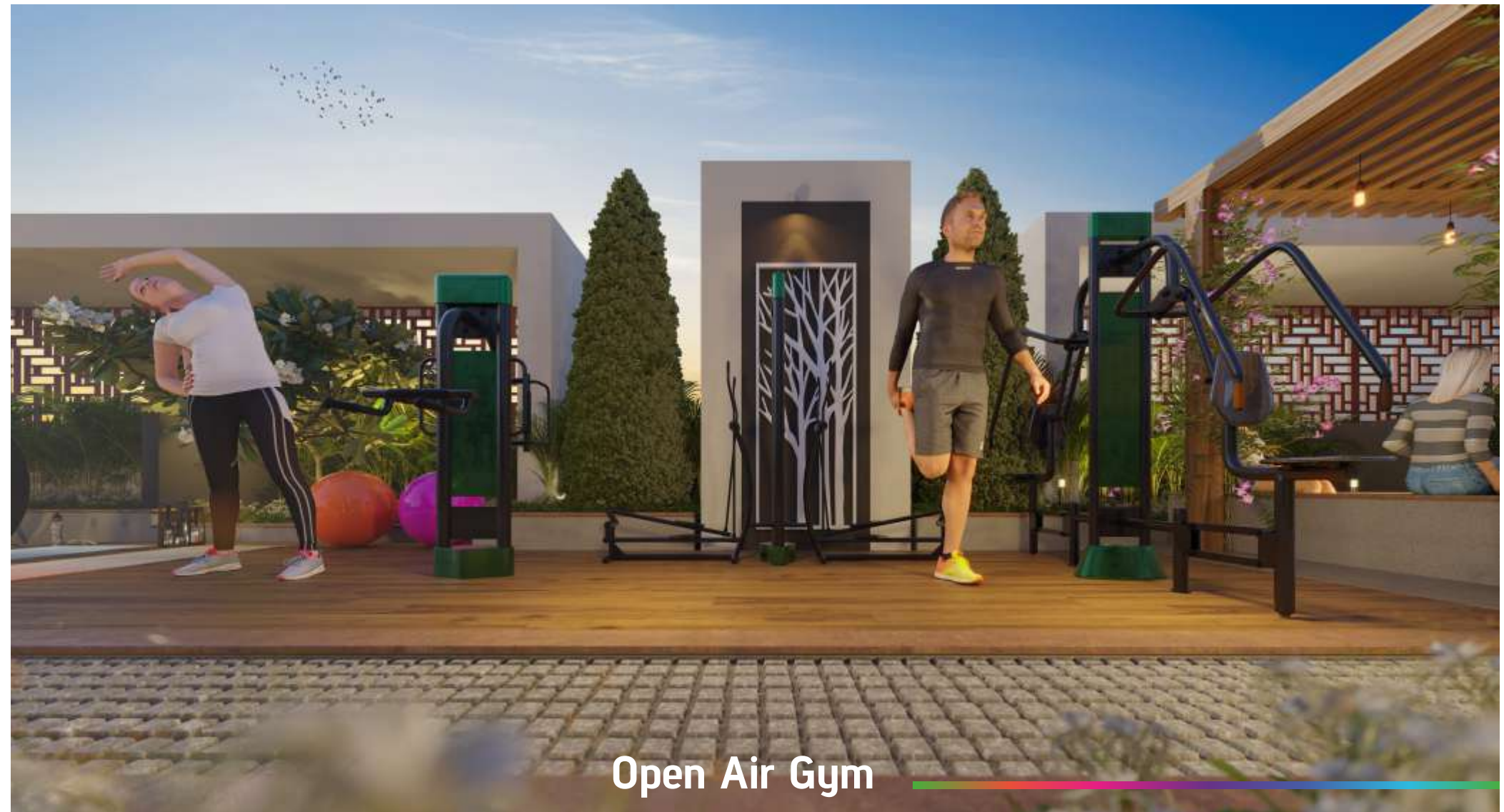
Amenities

When we say that Vansh Viva is created to be your perfect home, we are not talking about just a perfect residence. The comforts and leisures embedded in this complex offer you more than a house. They offer you a home filled with happiness.





Open Air Yoga

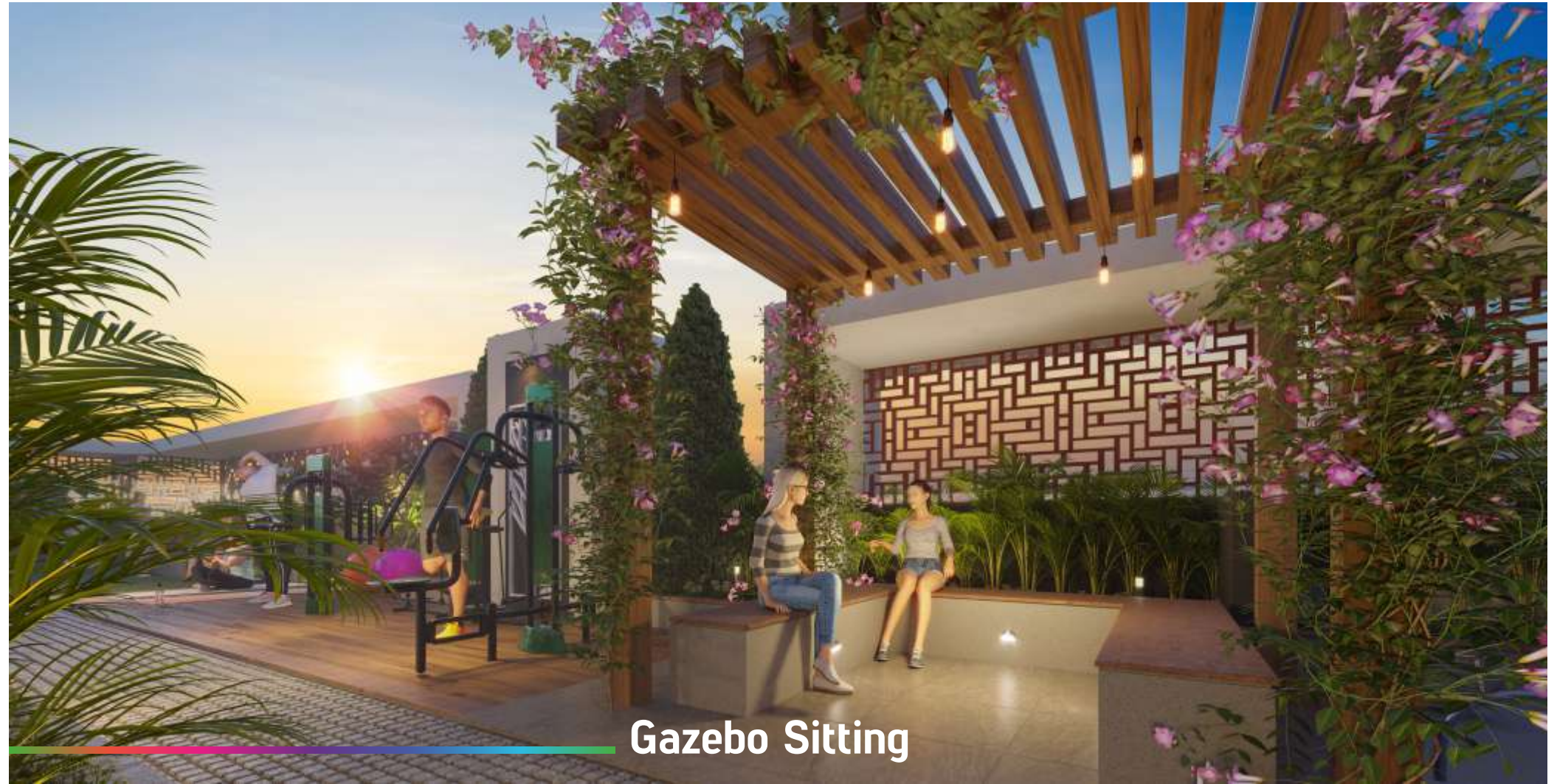


Open Air Gym



Fitness

Fitness regimes at exclusive spaces are always invigorating. Come join us on this adventure as we unfold the most premium living to you. A Powerful Emblem of Kiwale's Unfettered Aspirations and Indomitable Drive,



Gazebo Sitting



*Toddlers Area
& Sitting*

Adding the perfect ingredients to life just the way it should be, there's never a mundane moment in the soulful brasserie.



Children Play Area



Work Spaces



Party Lawn



*Party Lawn
& Work spaces*

Connoisseur of Culture & Epitome of Excellence
Work, Play, Party
It's a Bouquet of lifelong Experiences...



BECAUSE IT IS ALL IN THE LOCATION..

LEARNING

- Symbiosis Skills & Open University- 0.1 KM
- CityPride School- 1.8 KM
- B. K. Birla Centre for Education- 2.7 KM
- Lotus Business School- 5.8 KM
- PCCOE- 5.7 KM
- JSPM Institutes- 6.5 KM
- S. B. Patil Public School- 6.5 KM
- D. Y. Patil College of Engineering- 6.5 KM
- Akshara International School- 7.4 KM
- Podar International School- 7.5 KM
- Kendriya Vidyalaya 1- 7.9 KM
- Balaji Institutes- 8 KM

HEALTH CARE

- Varad Hospital- 1.8 KM
- Ojas Multispecialty Hospital- 6.2 KM
- Unique Multispecialty Hospital- 6.5 KM
- Lokmanya Hospital- 8.9 KM
- Sparsh Hospital- 9.1 KM
- Aditya Birla Hospital- 9.2 KM

LIFESTYLE

- D Mart-1.7 KM
- Shree Samarth Cricket Academy, Gahunje -1 KM
- Pune FC Training Pitches- 1.5 KM
- Sentosa Resort & Water Park- 1.9 KM
- MCA Stadium- 2.5 KM
- Star Bazaar- 8.3 KM
- Vision One Mall- 8.8 KM
- Croma- 11 KM
- Big Bazar- 12 KM
- Hotel Bluewater- 6.5 KM
- Sayaji Hotel- 8.8 KM
- Ginger Hotel- 9 KM
- The Orritel Hotel- 11 KM



*Get into Luxury
Urban By Design*

Feel the colors of life in all their splendor as these Ultra-Modern verticals open up a profusion of untold possibilities...

SPECIAL FEATURES

- 24x7 security
- Rain water harvesting.
- Solar Water Heater.
 - STP plant.
- Generator backup for common areas.
 - CCTV cameras for common areas.
 - Fire fighting system.
- LED street lights for entire project.
 - Drivers / Guest Room.
 - Society Office.

Specifications

STRUCTURE

- Earthquake resistant R.C.C. framed structure.

MASONRY

- External / Internal premium quality AAC (Siporex)Block work.
- External double coat sand faced plaster.
- Gypsum finish with putty to all internal walls.

LOBBY

- Luxurious ground floor lobby with Italian marble / granite flooring.
- Upper floors lobby in vitrified tiles and lift cladding in granite / designer tiles.

ELEVATOR

- High speed lift of Premium brand with Generator backup.

FLOORING

- Double charged 2' x 2' Designer tiles in all rooms.
- Anti-skid tiles in balconies.

KITCHEN

- Granite counter with SS sink.
- Ceramic tiles dado upto 9' height.
- Provision for RO Water purifier in kitchen.

PAINT

- Premium quality apex paint for exterior walls.
- Oil bond Distemper for internal walls.

DOORS

- Decorative main door.
- Internal flush doors with cylindrical lock.
- Flush doors for toilets and bathrooms with granite door frame.

WINDOWS

- Three track powder coated Aluminum sliding windows with granite frame.
- Windows with mosquito mesh & Safety Grill.
- Double glazed glass in windows.

TOILETS

- Premium quality sanitary and plumbing fixtures.
- Concealed plumbing.
- Designer tiles on walls upto 9' height.

ELECTRICAL

- All electrical wiring is concealed with PVC fire-rated insulation wires and branded modular switches.
- Sufficient light points and power outlets provided.

PROVISIONS

- Provision for exhaust fan in kitchen and toilets.
- Provision for electrical geyser point in toilets.
- Provision for DTH and WiFi connections in living room.



RAJVANSH GROUP over the decade has always laid emphasis on sustainable growth, and thus also reinvented itself with every passing year. Put together learnings and experiences over the years and you get VANSH VIVA. A residential project of the highest standards and extravagance.

PROJECTS

A PROJECT BY



T H E T E A M

ARCHITECT
AR MAHENDRA THAKUR

LANDSCAPE
AR ATUL RAUT

RCC
RAHUL KAPSE & ASS.

LEGAL
ADV. SUNIL AWARE

MEDIA
RENDERZ

FOR BOOKINGS CONTACT: 9607 88 7733 | 9607 99 7733

Site Office Address: Kiwale, Pune.

Corporate Office Address: Office no 209, Maithili Empire, ShivShambhu Colony, AdarshNagar, Kiwale, Pune.



Maharera No.: P52100031757

www.maharera.mahaonline.gov.in

Website : www.rajvanshgroup.com

Email : sales@rajvanshgroup.com

Disclaimer: The information depicted herein viz., master plan, floor plans, furniture layout, fittings, illustrations, specifications, designs, dimensions, rendered views, colors, amenities & facilities etc., are subject to change without prior notification as may be required by the relevant authorities or the developer, architect, and cannot form part of an offer or contract. While every care is taken in providing this information, the developer cannot be held liable for variations. All illustrations & pictures are artist's impression only. The information are subject to variations, additions, deletions, substitutions & modifications as may be recommended by the architect or the relevant approving authorities.