

PROJECT BY



UNITED
Designing your life style

WHERE DREAMS TRANSCEND ACTUALITY



ULTRA LUXURY PREMIUM RESIDENCES

ABOUT UNITED PROJECTS



United Projects in Bangalore has over one decade of experience in real estate sector.

A team with vision and imagination to create that answers every modern requirement. United's success is handpicked locations, honest pricing, on-time delivery, consistent superior performance & customer satisfaction.

The company's reputation remains focused on delivering the highest levels of quality, with no compromise. United as an organization is highly focused on delivering quality homes in a timely manner with utmost perfection



TRAVERSE YOUR DREAMS AT



A
MIRAGE
OF A LUXURIOUS LIFESTYLE
TURNED INTO
REALITY

A PROJECT BUILT TO EMBRACE FINE LIVING WHERE CONVENIENCE AND TRANQUILITY CAN CO-EXIST. UNITED PROJECTS PRESENTS UNITED DREAMCITY- A GATED COMMUNITY DESIGNED TO LET YOU IMMERSE INTO AN EXPERIENCE OF LUXURIOUS LIVING WITH IMPECCABLE TASTE AND AN ELEGANT SENSE OF STYLE.



WELCOME
TO



DREAMCITY IS THE PERSONIFICATION OF
IMMACULATE PLANNING AND PRECISE
DESIGNS- A GENUINE ENDEAVOR TO
EMBRACE THE IDEA OF A PERFECT HOME
FOR YOU AND YOUR FAMILY WHILE
OFFERING A SERENE FEELING OF
BEING CLOSE TO NATURE.



EVERYTHING YOU NEED
FOR FINE LIVING



S

SPACES
THAT REDEFINE
MODERN
LIVING

IMAGINE COMING HOME TO A
PLACE FILLED WITH ABUNDANT
GREEN SPACES AND A
COMMUNITY THAT FEELS YOU
WITH WARMTH AND LOVE.

SPACIOUS SURROUNDINGS, FRESH
AIR, MODERN AMENITIES, AND
GREEN SPACES ALL AROUND YOU.
THAT IS HOME FOR YOU IN
DREAMCITY.

R



ELEGANT
DESIGNS



GREEN
AREAS



UPSCALE
AMENITIES



GREAT
CONNECTIVITY



THRIVING
COMMUNITY



GREAT
RETURNS



394 UNITS
1195 - 3185 SQ.FT



AMPLE
AMENITIES



74% OPEN
SPACE

REDEFINE YOUR EASY LIVING

DREAMCITY, WHICH SPANS A VAST AREA, IS THE EPICENTER OF SPACIOUS MODERN LIVING WHERE WE COMBINE COMFORT AND SOPHISTICATION TO CREATE THE FINEST ENVIRONMENT TO LIVE IN. WITH PHOENIX MALL, INORBIT MALL, AND IONA ENTERTAINMENT IN WHITEFIELD, BENGALURU, YOU WILL BE LIVING IN THE HEART OF MODERN EFFICIENCY AND ENJOYMENT.



A GRANDER LIFESTYLE AWAITS YOU.



**EXPERIENCE A QUINTESSENTIAL
LIFESTYLE AT DREAMCITY**



MASTER PLAN

01 - 24//7 SECURITY ROOM/ENTRANCE/EXIT ARCH GATE

02 - VISITOR'S CAR PARKING

03 - RAMP ENTRY/EXIT FOR BASEMENT

04 - ADULT POOL

05 - TODDLER POOL

06 - CLUB HOUSE

GROUND FLOOR: ADMIN OFFICE, PARTY HALL

FIRST FLOOR: TABLE TENNIS, CARROM, CHESS, FOOSE BALL,

GYMNASIUM, BILLIARDS

SECOND FLOOR: AEROBICS, CARDS ROOM

THIRD FLOOR: MULTI-PURPOSE HALL

07 - SENIOR CITIZEN LOUNGE

08 - JOGGING TRACK

09 - LANDSCAPE AREA

10 - BASKETBALL COURT

11 - CHILDREN'S PLAY AREA

12 - FESTIVAL PLAZA

13 - BADMINTON COURT

14 - LAWN TENNIS

15 - RAMP ENTRY/EXIT FROM BASEMENT

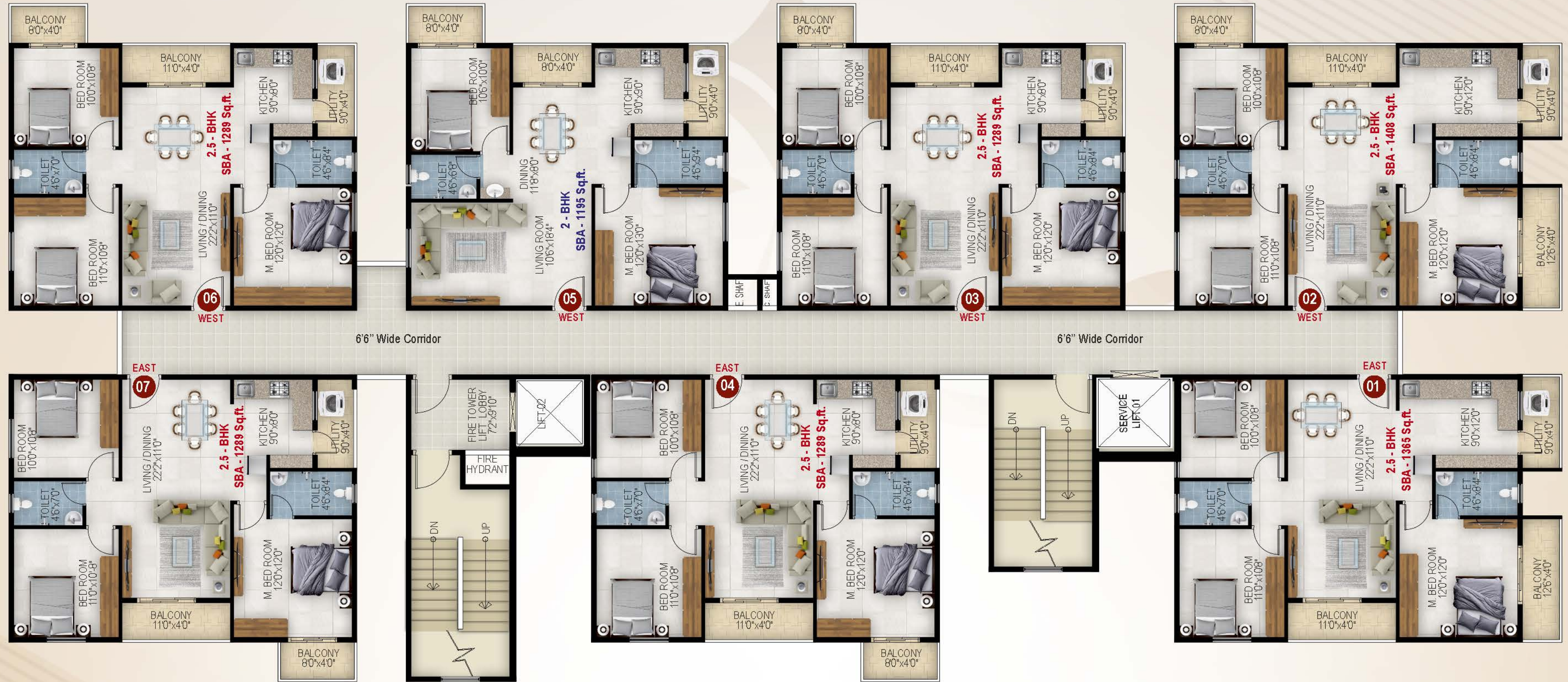
16 - CAR PARKING

17 - STP BELOW

18 - TC YARD

19 - CORPORATE OFFICE

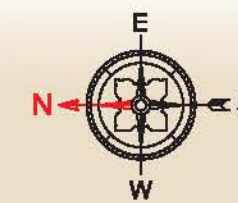




WING - 1

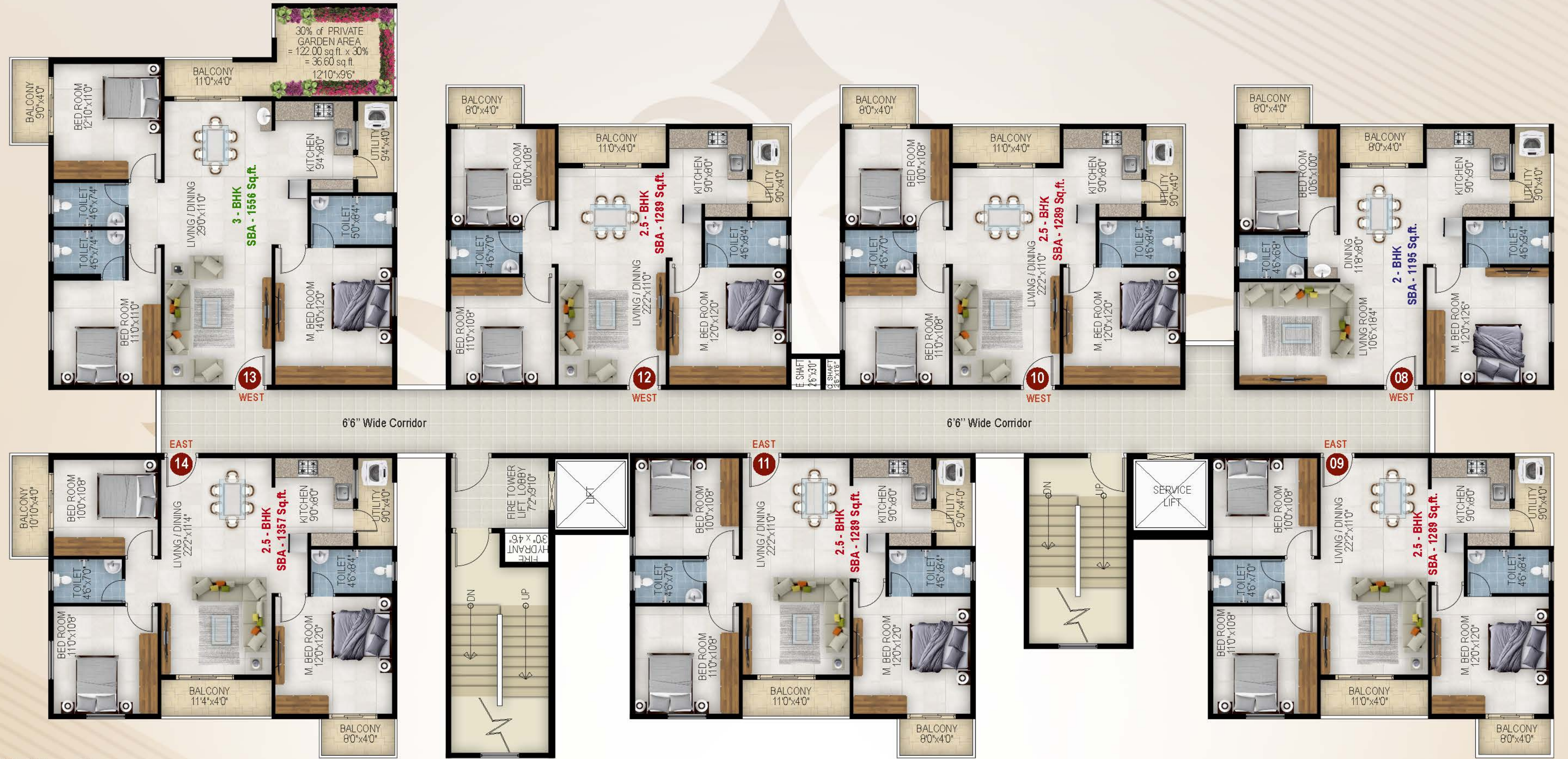
AREA STATEMENT FROM 1ST TO 12TH FLOOR

FLAT NO.	TYPE	FACING	CARPET AREA	BLCY. & UTLY.	SBA IN SFT.
01	2.5 BHK	East	838	130	1365
02	2.5 BHK	West	840	163	1408
03	2.5 BHK	West	801	114	1289
04	2.5 BHK	East	801	112	1289
05	2 BHK	West	746	102	1195
06	2.5 BHK	West	801	114	1289
07	2.5 BHK	East	801	112	1289



KEY PLAN



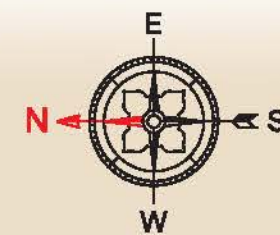


WING - 2

AREA STATEMENT FROM 1ST TO 12TH FLOOR

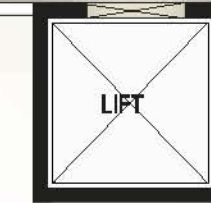
FLAT NO.	TYPE	FACING	CARPET AREA	BLCY. & UTLY.	SBA IN SFT.
08	2 BHK	West	746	104	1195
09	2.5 BHK	East	801	112	1289
10	2.5 BHK	West	801	114	1289
11	2.5 BHK	East	801	111	1289
12	2.5 BHK	West	801	114	1289
13	3 BHK	West	988	117	1556
14	2.5 BHK	East	810	155	1357

(Flat No 13 is from 1st Floor to 14 Floor)



KEY PLAN





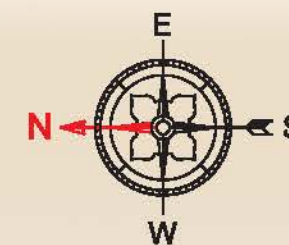
6'6" Wide Corridor

6'6" Wide Corridor

WING - 3

AREA STATEMENT FROM 1ST TO 12TH FLOOR

FLAT NO.	TYPE	FACING	CARPET AREA	BLCY. & UTLY.	SBA IN SFT.
015	3 BHK	West	1073	137	1702
016	3 BHK	East	1070	137	1702
017	2 BHK	West	746	102	1195
018	2 BHK	East	745	102	1195
019	2 BHK	West	746	102	1195
020	2.5 BHK	East	801	112	1289



KEY PLAN



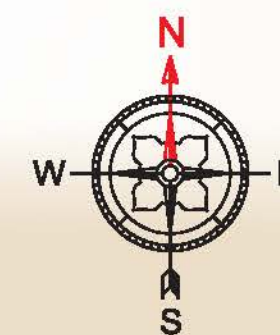


WING - 4

AREA STATEMENT FROM 1ST TO 12TH FLOOR

FLAT NO.	TYPE	FACING	CARPET AREA	BLCY. & UTLY.	SBA IN SFT.
021	3 BHK	East	996	127	1576
022	2 BHK	West	744	149	1259
023	2 BHK	East	749	136	1242
024	3 BHK	West	991	173	1633

(Flat No 21 & 24 is from 1st Floor to 14 Floor)



KEY PLAN



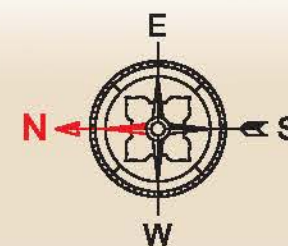


WING - 5

AREA STATEMENT FROM 1ST TO 12TH FLOOR

FLAT NO.	TYPE	FACING	CARPET AREA	BLCY. & UTLY.	SBA IN SFT.
025	2.5 BHK	East	838	130	1365
026	2.5 BHK	West	840	163	1408
027	2.5 BHK	East	801	112	1289
028	2.5 BHK	West	801	114	1289
029	3 BHK	West	1044	156	1675
030	3 BHK	East	996	126	1576

(Flat No 30 is from 1st Floor to 14 Floor)



KEY PLAN





THOUGHTFUL SPACES CALL THEM HOME

HOW PEOPLE CONNECT EMOTIONALLY AND PHYSICALLY IS CENTRAL TO OUR DESIGN ETHOS. THOUGHTFULLY PLANNED LAYOUTS WITH PARKS ENSURE THAT YOU AND YOUR FAMILY STAY IN HARMONY WITH NATURE AS LONG AS POSSIBLE IN SPITE OF THE BUSTLE OF THE CITY.





EXPERIENCE LIVING WITH DREAM CITY

AT DREAMCITY, EVERY AMENITY IS CONSIDERED TO ADD VALUE TO YOUR LIVING. DON'T MISS THE REMARKABLE OPPORTUNITY TO LIVE IN THE MIDST OF GREENERY, STEPS AWAY FROM SCHOOLS, HOSPITALS AND IT COMPANIES.





2 BHK
EAST
SBA : 1242 SFT



BHK 3
WEST
SBA : 1675 SFT

2.5 BHK
EAST
SBA : 1365 SFT



BHK 3
EAST
SBA : 1576 SFT
EAST FACING



4 BHK DUPIEX
EAST
SBA : 2344 SFT



UPPER DUPLEX FLOOR
AREA : 1015 SFT



LOWER DUPLEX FLOOR
AREA : 1329 SFT

UPPER DUPLEX FLOOR
AREA : 1242 SFT



5 BHK DUPIEX
WEST
SBA : 3032 SFT



LOWER DUPLEX FLOOR
AREA : 1790 SFT



D

A PERFECT BLEND OF LUXURY & SERENITY

When the space is open, the various areas within it can flow and connect.

The expansive apartments, at Dream City, branch out into balconies converting these spacious light-drenched apartments into exquisite homes.







There are ample things to do and places to go in this cozy neighborhood. Located directly across the tree lines plaza, are Dream City's gymnasium and jogging tracks.

But what makes the place extra special in the eyes of those who have already experienced this renowned and vibrant community is a swimming pool, badminton court, and thoughtfully designed children's play areas.



AMENITIES



CHILDREN'S PLAY AREA



SWIMMING POOL



INDOOR GAMES



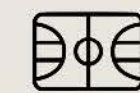
JOGGING TRACK



BADMINTON COURTS



MEDITATION HALL



FULL BASKETBALL COURT



GYM



FESTIVAL PLAZA



SENIOR CITIZEN PLAZA



LAWN TENNIS



AEROBICS



EXCEPTIONAL DESIGNS & LUXURY

These uniquely designed apartments embody the interests and the lifestyles of the people we believe will want to live there and merge it with a design sensibility, high-quality standards and ultra-luxe features.

SPECIFICATIONS



STRUCTURE

R.C.C. framed structure with solid cement concrete block masonry.



DOORS

Main doors & Internal doors

Engineered hardwood frame with designer shutters



WINDOWS & FRENCH WINDOW

Windows

UPVC door systems with sliding shutters with mosquito mesh



FLOORING

Common Area

Full body Vitrified tiles flooring

Staircases

Granite flooring .Full body Vitrified tiles flooring

Living, Dining, all Bedrooms & Kitchen

800 X 800 mm size Vitrified tiles.

Bathrooms

Ceramic tiles dado upto 7feet height

Dadoing in Kitchen

Ceramic tiles dado upto 2 feet above granite platform



ELECTRICAL

Concealed copper wiring of Havells or polycab or equivalent. Power Supply of 3KW per flat. 1KW power backup per flat



PAINTINGS

External

Exterior emulsion paint.

Internal

Emulsion paint for walls and ceiling over a coat of primer.



KITCHEN

Granite Platform with steel sink Provision for Softned Water



BATHROOMS

Granite counter for washbasin in master bedroom toilet Wall-mounted EWC with single lever diverter cum shower. Single lever diverter cum shower.

C.P Fittings & Sanitary fitting

Grohe or Jaquar or Hindware or equivalent.



PLUMBING

Drainage & Sewage

PVC Pipes & fittings.

Water supply

Internal & External CPVC or UPVC pipes & fittings.



SECURITY

Round the clock security system Intercom facility to all apartments connecting to security room. Surveillance cameras at the main security



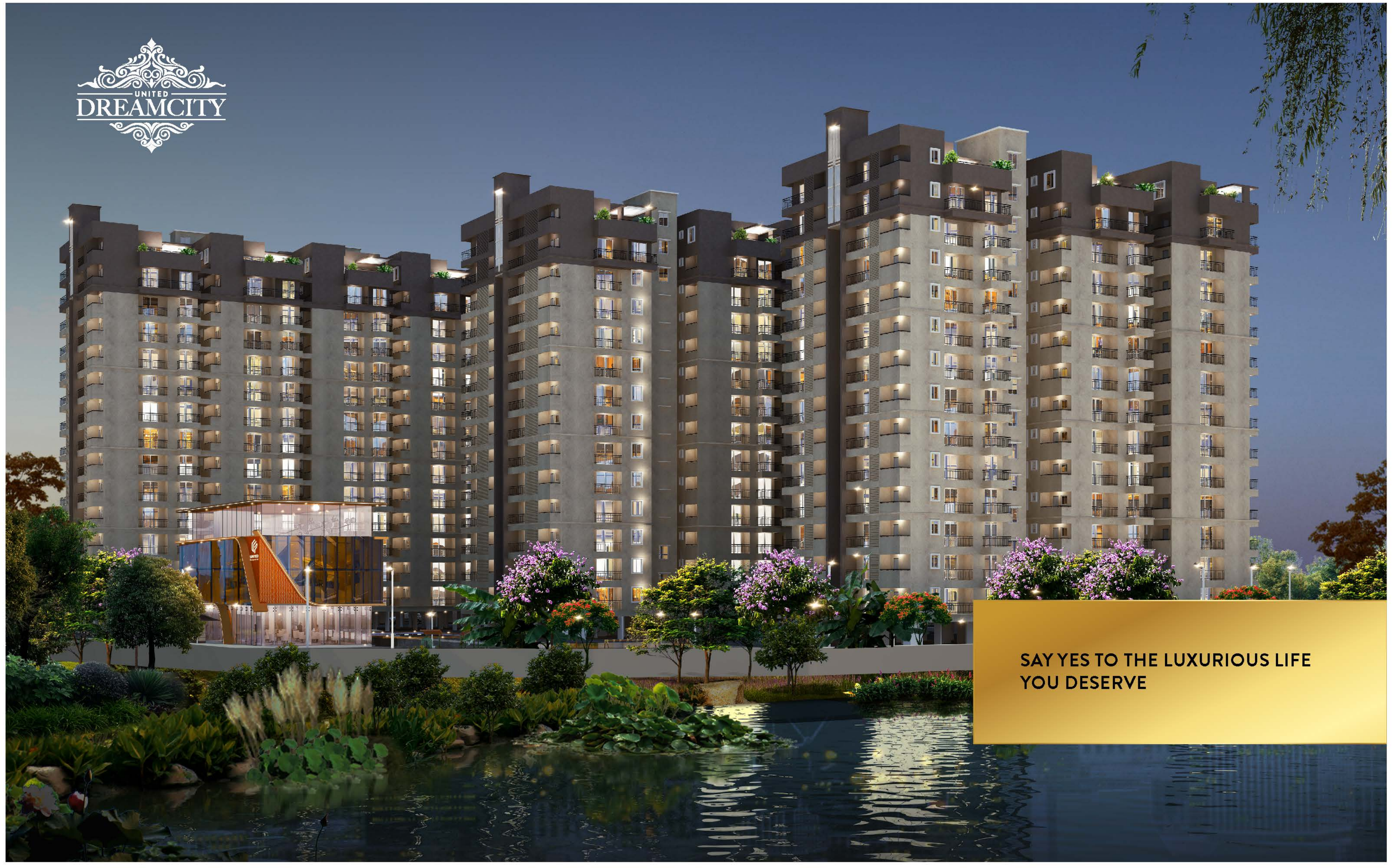
WTP & STP

Fully treated water made available through an exclusive water softening and purification plant Sewage treatment plant of adequate capacity as per norms will be provided inside the project, treated sewage water will be used for the landscaping / flushing purpose



TELECOM /INTERNAL /CABLE TV

Provision for internet, DTH, telephone & intercom



**SAY YES TO THE LUXURIOUS LIFE
YOU DESERVE**

OUR PROJECTS



UNITED SUN CITY
@ SADARAMANGALA, WHITEFIELD



UNITED SAI SILICON CITY
@ NAGONDANAHALLI, WHITEFIELD



UNITED SAI ARCADE
@ DOMMASANDRA - WHITEFIELD



UNITED GREEN CITY
@ DODDABANAHALLI, WHITEFIELD



UNITED DREAMS
@ SEEGEHALI, WHITEFIELD



UNITED ELYSIUM - 3
@ JUNIOR COLLEGE ROAD, WHITEFIELD



UNITED MEADOWS
@ BROOKEFIELD, KUNDANAHALLI



UNITED ELYSIUM
@ SEEGEHALI MAIN ROAD, WHITEFIELD



UNITED ELYSIUM - 2
@ CHANNASANDRA MAIN ROAD, WHITEFIELD



UNITED BLOSSOM
@ DODDABANAHALLI, WHITEFIELD



YOUR NEIGHBOURHOOD

SCHOOLS

- VIBGYOR
- NATIONAL PUBLIC SCHOOL
- CHRYSALIS
- PNC & ZEE
- MVJ COLLEGE OF ENGINEERING
- DEEN ACADEMY
- JAIN HERITAGE INTL. SCHOOL
- ORCHIDS INTL. SCHOOL
- SRUSTI GLOBAL SCHOOL
- LAKE MOUNT FORT
- DIYA ACADEMY
- SEA COLLEGE
- NARAYANA SCHOOL
- CHAITHANYA SCHOOL

OFFICES

- TATA ELXSI
- BEARYS GLOBAL RESEARCH
- SIEMENS LIMITED
- GRIND WELL
- GR TECH PARK
- ITPL
- UNILVER
- KIADB
- NOVO NORDISK
- TESCO
- ACCENTURE
- I-GATE
- L&T
- UTC AEROSPACE SYSTEMS
- SAP
- RMZ

HOSPITALS

- AXIS HOSPITAL
- SATHYA SAI SU
- PER SPECIALITY HOSPITAL
- VYDEHI HOSPITAL
- MANIPAL HOSPITAL WHITEFIELD
- SHANKARA EYE HOSPITAL
- YASHOMATI HOSPITAL
- CLOUD 9 CLINIC
- MIRACLE HOSPITAL
- NARAYANA MULTI SPECIALTY HOSPITAL

SHOPPING MALLS

- SBR INOX
- ORION UPTOWN
- PARK SQUARE MALL
- FORUM VALUE MALL
- INORBIT MALL
- VR MALL
- PHOENIX MALL

HOTELS

- SHERATON 4 POINTS
- TAJ VIVANTA
- THE DEN
- JW MARIOT HOTEL
- FAT CHEF
- HOLIDAY IN
- MAINLAND CHINA
- GINGER HOTEL
- ZURI





PROJECT BY



RERA: PRM/KA/RERA/1251/446/PR/061222/005508

PROJECT & CORPORATE OFFICE :
PLOT No.2, KHB LAYOUT, OLD MADRAS ROAD, HUSKUR VILLAGE,
BIDARAHALLI, HOBLI, BETQ, BENGALURU - 562129



unitedproject.in

Follow us on:

 /unitedprojects.official

 /@unitedprojects.official

 /theunitedprojects

 /@unitedprojects.official



#2460, 2nd Floor, Vayujakshi Building,
17th Main, 24th Cross, Banashankari, 2nd Stage,
Bengaluru - 560070, Karnataka.

Email: ambient_architects@hotmail.com

Sreenivasarao, G (Chief Architect)

Advocates

Suriya Law Associates
suriyalawaassociates@gmail.com

**Note: This brochure is only a conceptual presentation of the project and not a legal offering.
The promoters reserve the right to make changes in plans, specifications and elevation as deemed fit.**