

B A S I L



PRIME 4, 3, 2.5 & 2 BHK RESIDENCES



# M A X X I M U S

The name 'Basil Maximus' represents more than just a development—it symbolizes an exceptional experience. It evokes a sense of strength, power, and greatness, offering abundance in every aspect. Prepare to be enchanted by the grandeur that awaits within these striking walls.



B A S I L

# MAXIMUS

PRIME 4, 3, 2.5 & 2 BHK RESIDENCES  
AT PUNAWALE

A lifestyle masterpiece that **redefines luxury** living. Immerse yourself in a world of grandeur and sophistication that transcends expectations. Our meticulously designed residences **offer spacious layouts** and **awe-inspiring views**, inviting you to embrace the pinnacle of contemporary living. Experience the epitome of indulgence through our unrivaled amenities. Nestled in the **vibrant heart of Punawale**, Basil Maximus seamlessly weaves **convenience** and **elegance**, presenting a truly exceptional lifestyle.







ARTIST'S IMPRESSION

## MAXIMUM LIVING EXPERIENCE

Basil Maximus is a visionary development where **luxury** and **distinction intertwine**. Meticulously designed and flawlessly executed, this extraordinary development sets a new standard for **sophistication** and **elegance**. Choose from an array of residential options offering spacious layouts that **redefine comfort**. Basil Maximus is here to craft your life of distinction and create a truly exceptional living experience.



TEMPERATURE- CONTROLLED SWIMMING POOL



POOLSIDE DECK AMENITIES & UTILITIES



SHOWER WITH CHANGING ROOM



KIDS' POOL



PLUNGE POOL





ARTIST'S IMPRESSION

## THE EPICENTER OF MAXIMUM JOY

Let the young ones be wild and free to **explore, learn & play**. At Basil Maximus, we believe, play is essential for a child's holistic development. It is a catalyst for growth and nurturing a sense of wonder. Discover a space where imaginations are **ignited**, **friendships** are forged, and **bliss** is ever-present. Watch their faces light up with excitement as they navigate through a maze of tunnels, conquering obstacles and forging their own paths.



KIDS' PLAY AREA



CYCLING TRACK



SANDPIT



TODDLERS' PLAY AREA



MULTIPLE SPORTS  
AMENITIES



NET CRICKET PITCH





ARTIST'S IMPRESSION

## MAXIMUM WELL-BEING

The **Yoga/Meditation Area** at Basil Maximus is more than just a physical space—it is a sanctuary for self-care and self-discovery. The moment you enter, a gentle aura of calm envelops you, inviting you to immerse yourself in an oasis of peace. As you focus on your **breath, feel the tensions melt away, and a sense of calm** wash over you. This is your sacred space, a place to nurture your well-being, cultivate mindfulness, and awaken your senses to the beauty of the present moment.



YOGA ZONES



MEDITATION AREA



JOGGING TRACK



ZUMBA AREA



RAMP WALK



OXYGEN PARK



# LIFESTYLE AMENITIES

1. Entrance Gate
2. School Bus Or Cab Waiting Area
3. Temperature-controlled Swimming Pool
4. Poolside Deck
5. Poolside Bar Counter
6. Designer Max Club
7. Kitty Party Corner
8. Children's Play Area
9. Warm-up Area
10. Amphitheater
11. Party Stage
12. Elegant Party Lawn
13. Badminton Court
14. Multipurpose Play Court
15. Pets Area
16. Gossip Corner / Senior Citizen Seating
17. Gazebo Sit-out
18. Yoga Zone & Oxygen Park
19. Jogging Track
20. Cycling Track
21. Sandpit Area
22. Rampwalk
23. Dedicated Walkway & Pathway
24. Exit Gate



ARTIST'S IMPRESSION



# A WORLD OF SHEER SPLENDOUR



TEMPERATURE-CONTROLLED SWIMMING POOL



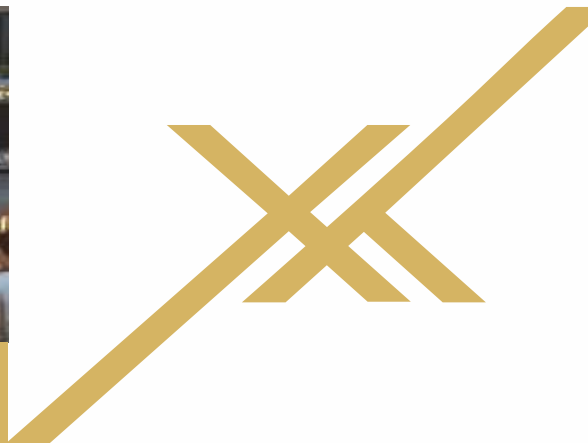
CHILDREN'S PLAY AREA



YOGA ZONE



GAZEBO SIT-OUT



CLUB MAX



ELEGANT PARTY LAWN



FULLY EQUIPPED MODERN GYMNASIUM



BUFFET AREA

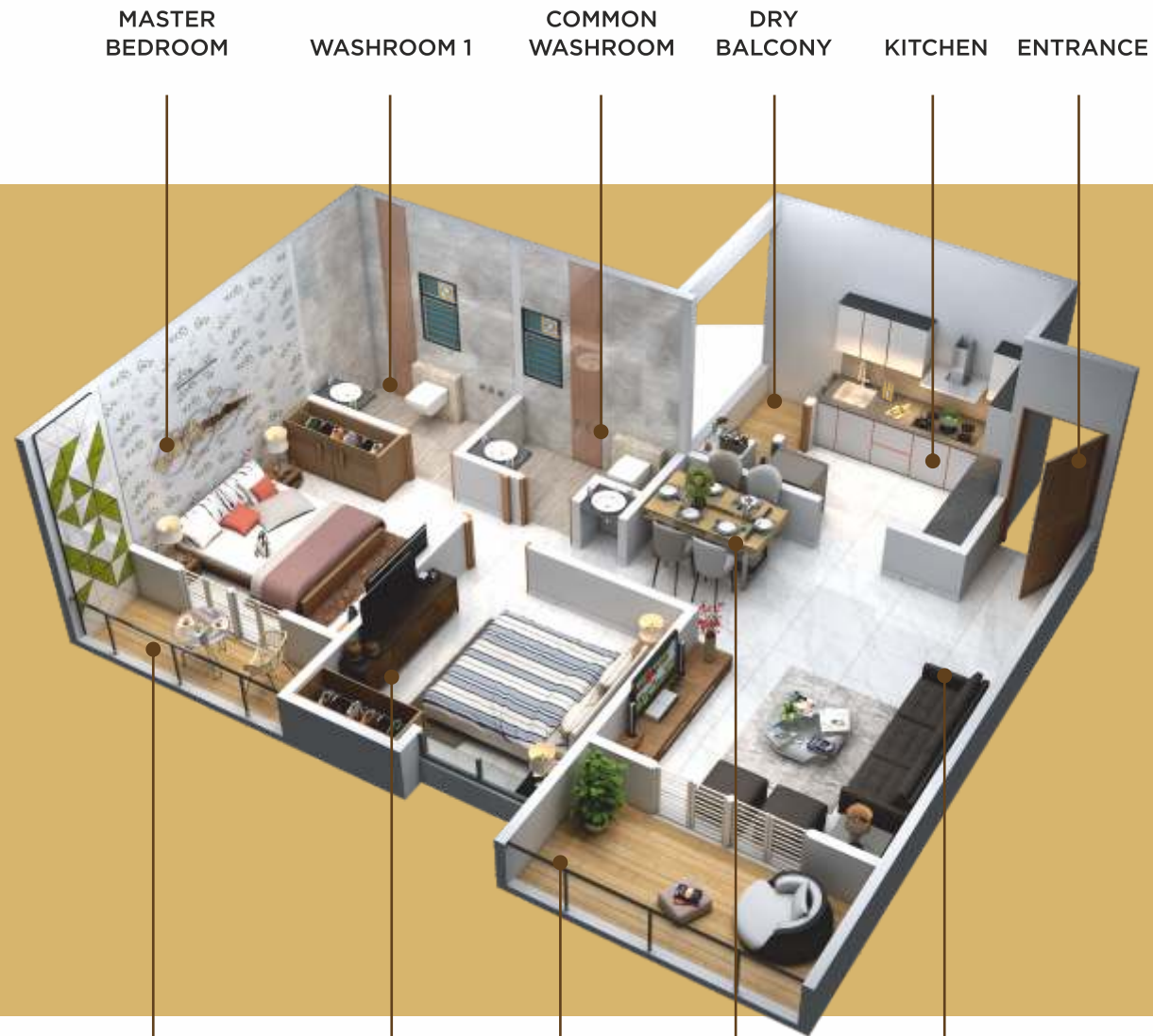
- Elegant Grand Entrance
- Covered Pavilion Seating
- Rubber Mound Garden
- Gossip Corner
- Parents Chit-chat Area
- Kitty Party Corner
- Swing Garden
- Tree Cluster with Sitting
- Feature Wall
- Green Gym For Healthy Lifestyle
- Rabbit Hole
- Green Seat Out Zone
- Hammock Garden
- Drinking Water Fountain
- Dedicated Walkway & Pathway
- Jogging Track
- Warm-up Area
- Decorative Water Body
- Trellis Structure
- Floor Exercise Area
- Children's Activity Area
- Kids Zone With Sandpit Area
- Kids Climbing Wall
- Trampoline Zone With Safety Net
- Net Cricket Pitch
- Cycling Track
- Single Basketball Court
- Pro Kabaddi
- Badminton Court
- Multipurpose Play Court
- Worship Place
- Stage With Background Wall
- Meditation Area
- Poolside Deck Amenities & Utilities
- Shower With Changing Room
- Dedicated Baby Pool
- Plunge Pool
- Sunbathing Area
- Herbal Oxy Garden
- Fruit Groove
- Acupressure Track
- Flag Hosting Area
- Pavilion Sitting
- Spider Web
- Tulsi Vrundavan
- Stepping Stone
- Community Garden
- Flower Garden
- Oxygen Park
- Pets Area
- Wooden Seating
- Three Tier Security
- School Bus Or Cab Waiting Area

## INDOOR AMENITIES

- Salon
- Indoor Games
- Toddlers' Play Area
- Zumba Area
- Well-equipped Creche for Kids
- Exclusive Multipurpose Hall
- Potluck Party Area
- Library and Co-working Space
- Fully Equipped Covered Gym with Ac



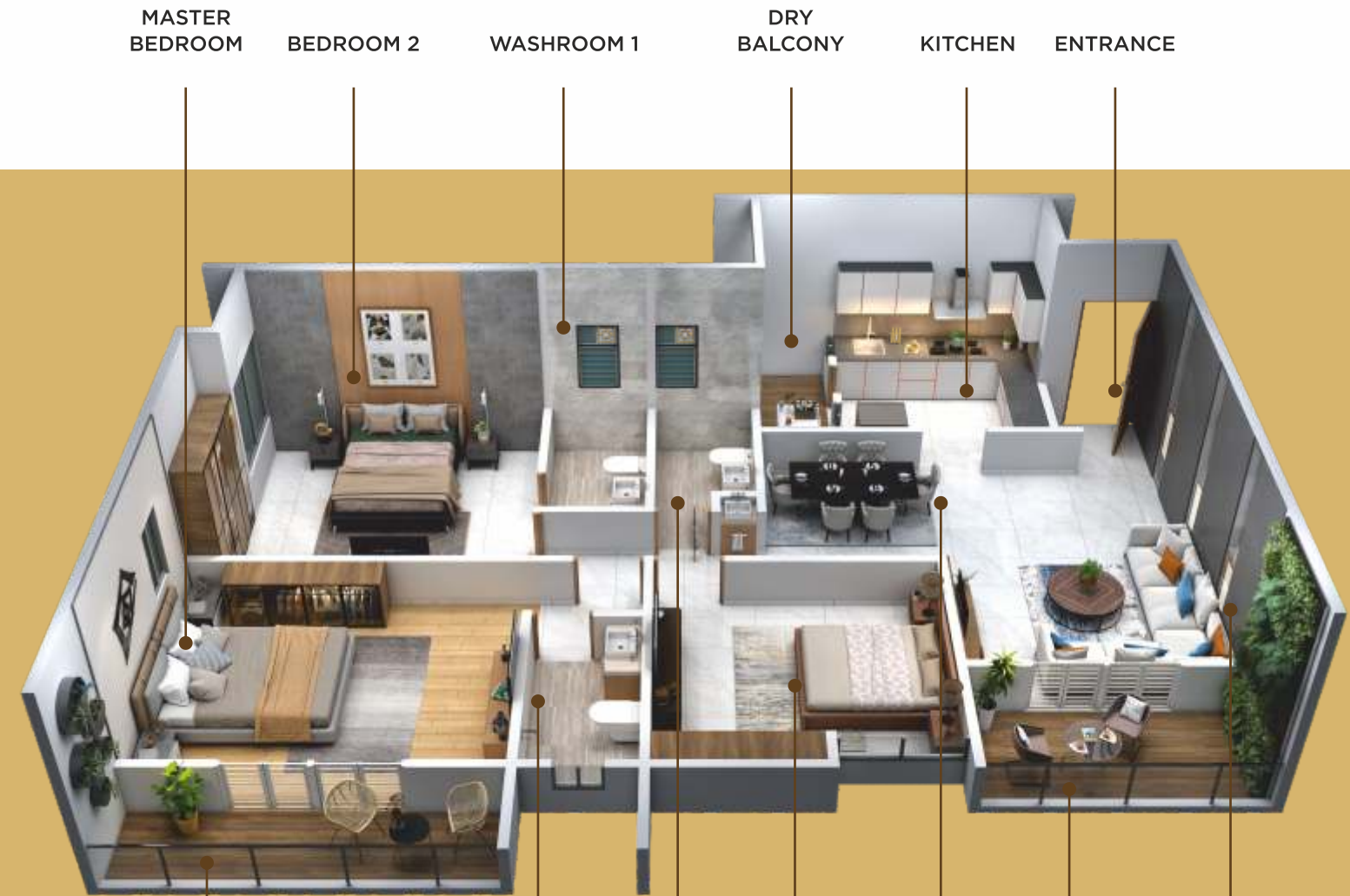
# 2 BHK



MASTER BEDROOM WASHROOM 1 COMMON WASHROOM DRY BALCONY KITCHEN ENTRANCE

TERRACE 2 BEDROOM 2 TERRACE DINING AREA LIVING ROOM

# 3 BHK



MASTER BEDROOM BEDROOM 2 WASHROOM 1 DRY BALCONY KITCHEN ENTRANCE

TERRACE 2 WASHROOM 2 COMMON WASHROOM BEDROOM 3 DINING AREA TERRACE LIVING ROOM



# SPECIFICATIONS

---

## STRUCTURE & MASONRY

- Earthquake-resistant RCC Frame structure
- Construction in Mivan Technology
- High-quality finishing with Aluform technology for construction
- External wall texture finish
- Internal wall & ceiling in gypsum finish

## ELECTRICAL FITTINGS

- Electrical Concealed copper wiring with modular switches and adequate points in all rooms
- Electrical provision for split A/C in master bedroom & living room
- Telephone point in living room and master bedroom
- Ceiling Fan points in all rooms
- TV cable point in living room and master bedroom
- Provision for electrical exhaust fan in kitchen & toilets
- Video Door Phone Provision
- Electrical point in dry balcony for washing machine
- Inverter backup provision for specific lights, & fan points
- Lights fittings on every terrace and energy-efficient light fixtures for external lighting
- Fire-resistant wires with MCB
- Modular sockets and switches

## GRILLS & RAILINGS

- Oil-painted MS safety grills
- Glass railing for terrace
- Toughened glass for terrace

## KITCHEN

- Granite platform with stainless steel sink
- Glazed tiles up to 2 feet above kitchen platform
- Electrical points for microwave, refrigerator, induction cooker & exhaust fan
- Washing machine provision - plumbing and electrical points in dry balcony
- Inverter point provision at distribution box

## FLOORING

- Vitrified tile flooring in living room, dining, kitchen, bedroom, and passage
- Anti-skid ceramic flooring in terrace, dry balcony, and toilet

## DRY BALCONY

- Ceramic tiles dado in dry balcony with provision for water inlet and outlet

## WINDOWS

- High-performance glazing for all habitable rooms
- Granite full frame for all windows
- Sliding 3-track Aluminium powder coated windows with MS safety grills along with mosquito mesh and oil paint to all window grills
- 18" X 50" series Aluminium sliding shutter
- Safety grills in all windows

## PAINTING

- Asian Apex external paint
- Acrylic paint for all internal walls

## BATHROOM / TOILETS

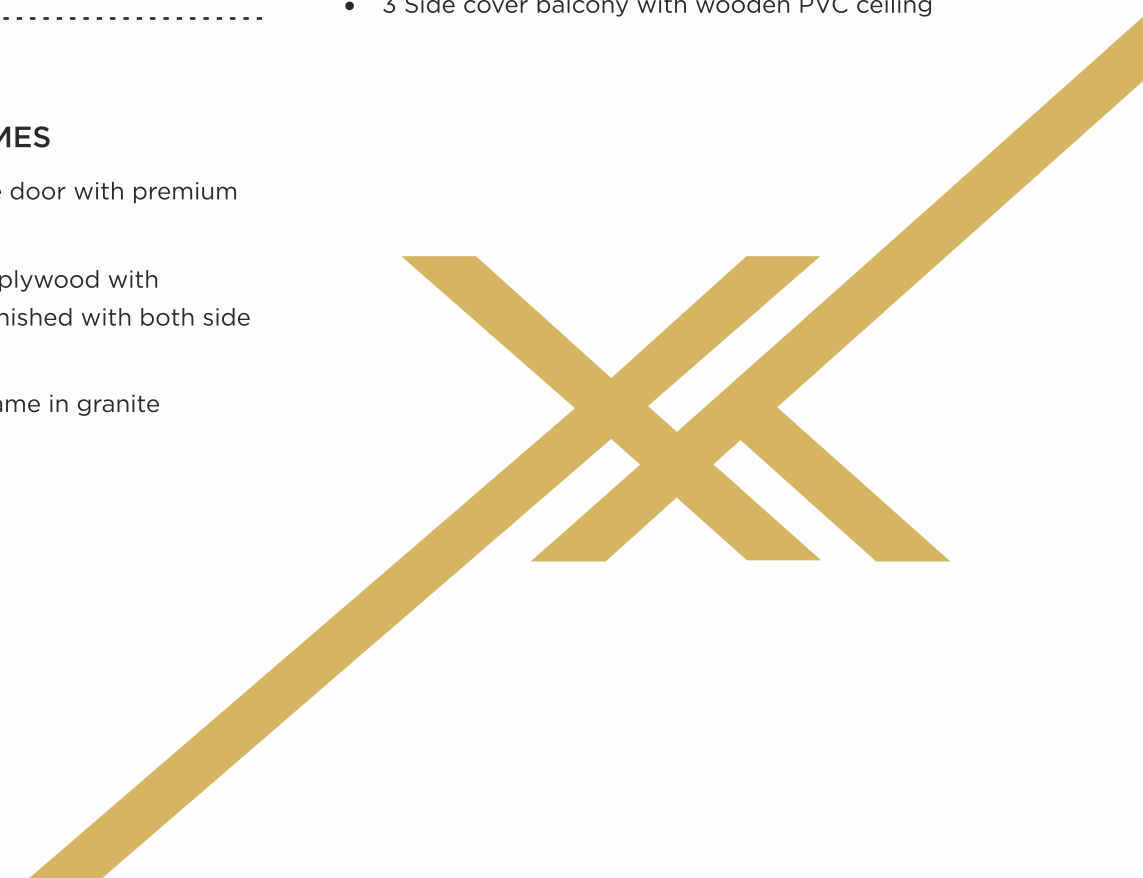
- Glazed tile dado up to lintel level in all bathrooms
- Anti-skid Ceramic flooring in all bathrooms
- CPVC concealed plumbing
- Jaquar or equivalent bathroom CP fittings
- Glazed tile dado up to 7 feet level in WC
- Heat pump connection for hot water in all Bathrooms
- CPVC plumbing and sanitary wares
- Exhaust fan and electrical boiler points

## DOORS & DOOR FRAMES

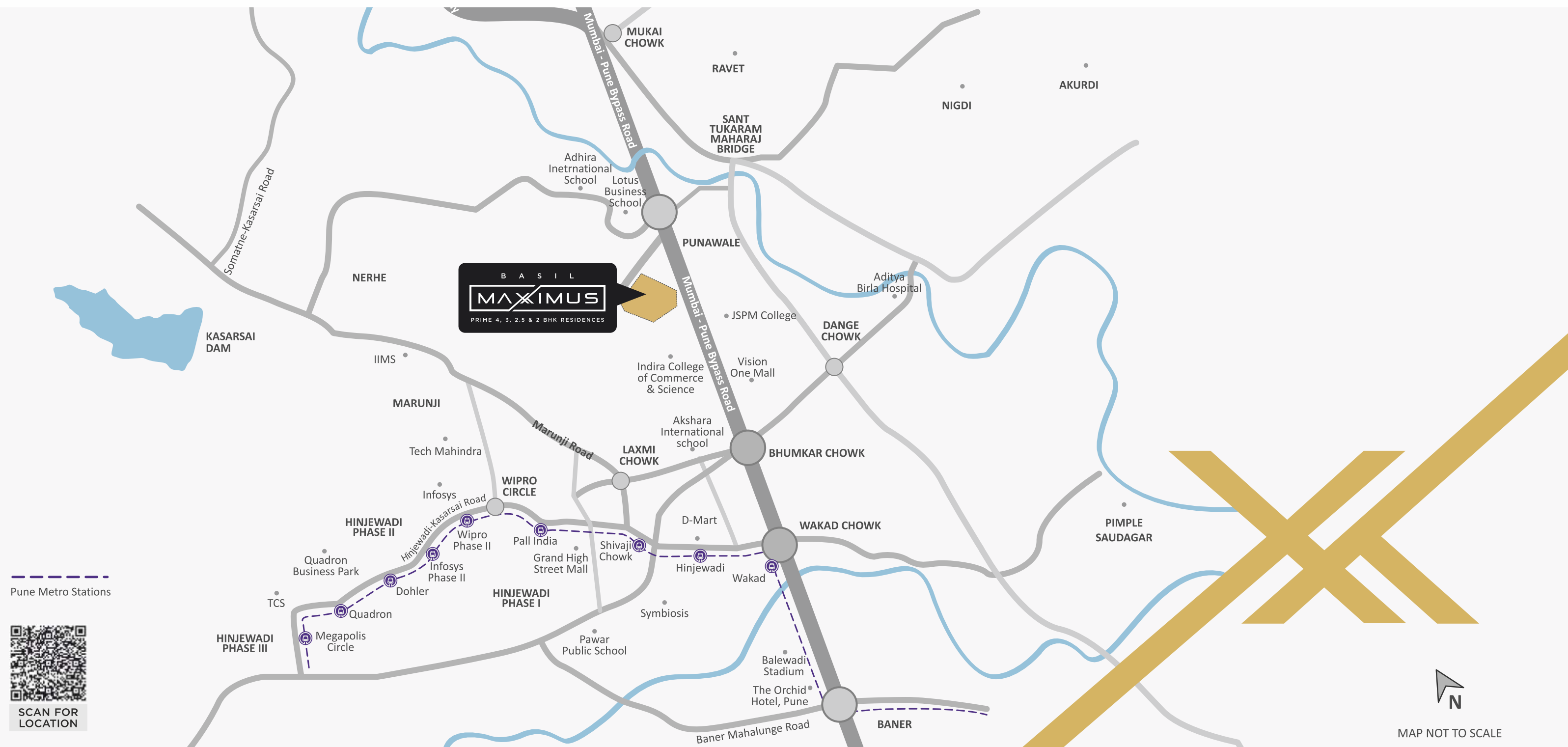
- Attractive main entrance door with premium quality fittings & fixtures
- All room door frames in plywood with decorative flush doors finished with both side laminate
- Bathroom & WC door frame in granite

## UTILITIES

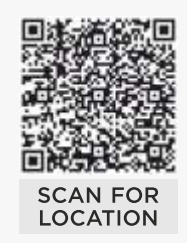
- Entrance Lobby
- Organic Waste Converter
- CCTV Surveillance
- Fire Fighter System
- Generator Backup For Common Areas
- Solar Water / Common lights
- Round The Clock Security
- UGWT & OHWT
- Rainwater Harvesting
- STP
- Exclusive Car Parking Space for Each Flat
- High-Speed Elevators with Power Backup
- Arrangement for Gas Pipe Line
- Attractive Entrance Gate with Security Cabin
- Decorative Entrance Lobby with Sit-out
- Visitors Car Parking
- 24 x 7 Water and Power
- Water filtration treatment plant
- 3 Side cover balcony with wooden PVC ceiling







--- Pune Metro Stations



N  
MAP NOT TO SCALE

## A WORLD OF ABSOLUTE CONNECTIVITY

### SCHOOLS & COLLEGES

JSPM College	3 mins
Indira College	8 mins
IBMR College	10 mins
Podar Jumbo Kids	10 mins
EuroSchool Wakad	15 mins
Vibgyor School, Wakad	15 mins

### HOTELS & RESTAURANTS

Sayaji	9 mins
Hotel Tip Top International	11 mins
Hyatt Place	17 mins
Vivanta	17 mins
Courtyard by Marriott	18 mins

### IT PARKS

Veritas	17 mins
Cummins	17 mins
Panchshil Tech Park, Balewadi	18 mins
Wipro Technologies Ltd.	21 mins
Rajiv Gandhi Infotech Park	22 mins
Infosys	23 mins

### SHOPPING

Vision One Mall	8 mins
Phoenix Mall of Millennium Wakad	9 mins
Decathlon	9 mins
DMart, Baner	14 mins
Xion Mall	17 mins
DMart, Hinjewadi	17 mins





ALWAYS MOVING AHEAD

JV PARTNER WITH



Site Address: Basil Maximus, Sr. No. 13/1/1, 13/1/2, 13/2, Pandhare Wasti Road, Punawale, Pune - 411 033

W: [www.basilgroup.co.in](http://www.basilgroup.co.in) | E: [maximus.sales@basilgroup.co.in](mailto:maximus.sales@basilgroup.co.in) | Follow us on:



MahaRERA Registration No.: P52100050916, P52100051323 | <http://maharera.mahaonline.gov.in>

This is not an offer, an invitation to offer and/or commitment of any nature. This contains artistic impressions and stock images for illustrative purpose and no warranty is expressly or impliedly given that completed development will comply in any degree with such artist's impression as depicted. All specifications of the flat shall be as per the final agreement between the Parties. Recipients are advised to use their discretion in relying on the information/amenities described/shown therein.

CREDAI

