

axis

BLUES



Smart Service Suites

Dodamarg, North of Goa



ENDLESS HAPPY MOMENTS

Experience the Goan Resort Living

Where you can take a wonderful journey infused with incredible experiences and unforgettable memories.

At Axis Blues, we have crafted a vibrant & harmonious ecosystem with world-class service standards. Overlooking a lake, the project is nestled in the heart of a valley, featuring characteristics that will make the life of residents truly remarkable yet easily approachable.



LIVE SMART AMIDST NATURE'S PARADISE

All it takes is a touch of button to connect and disconnect!

At Axis Blues, experiences get magical as our fully-automated Suites open to beautiful views of scenic mountains and a rainforest at just a touch of a button.

What's more? You can control the operations of your smart Suite at Axis Blues even when you're away from home.

Smart living technology can greatly increase your quality of life.

Security System

24x7 CCTV surveillance, face detection systems, etc.

Smart Conditioner

Temperature monitoring & controlling, Wastage reduction

Lighting Control

Automated access to light settings

App Based Management

Absolute control of app-connected gadgets

Appliance Control

Wi-Fi connected ACs, smart TV and music

Peace of Mind

Kids surveillance, Door lock verification

WELCOME TO SMART LIVING





NATURE LIVING

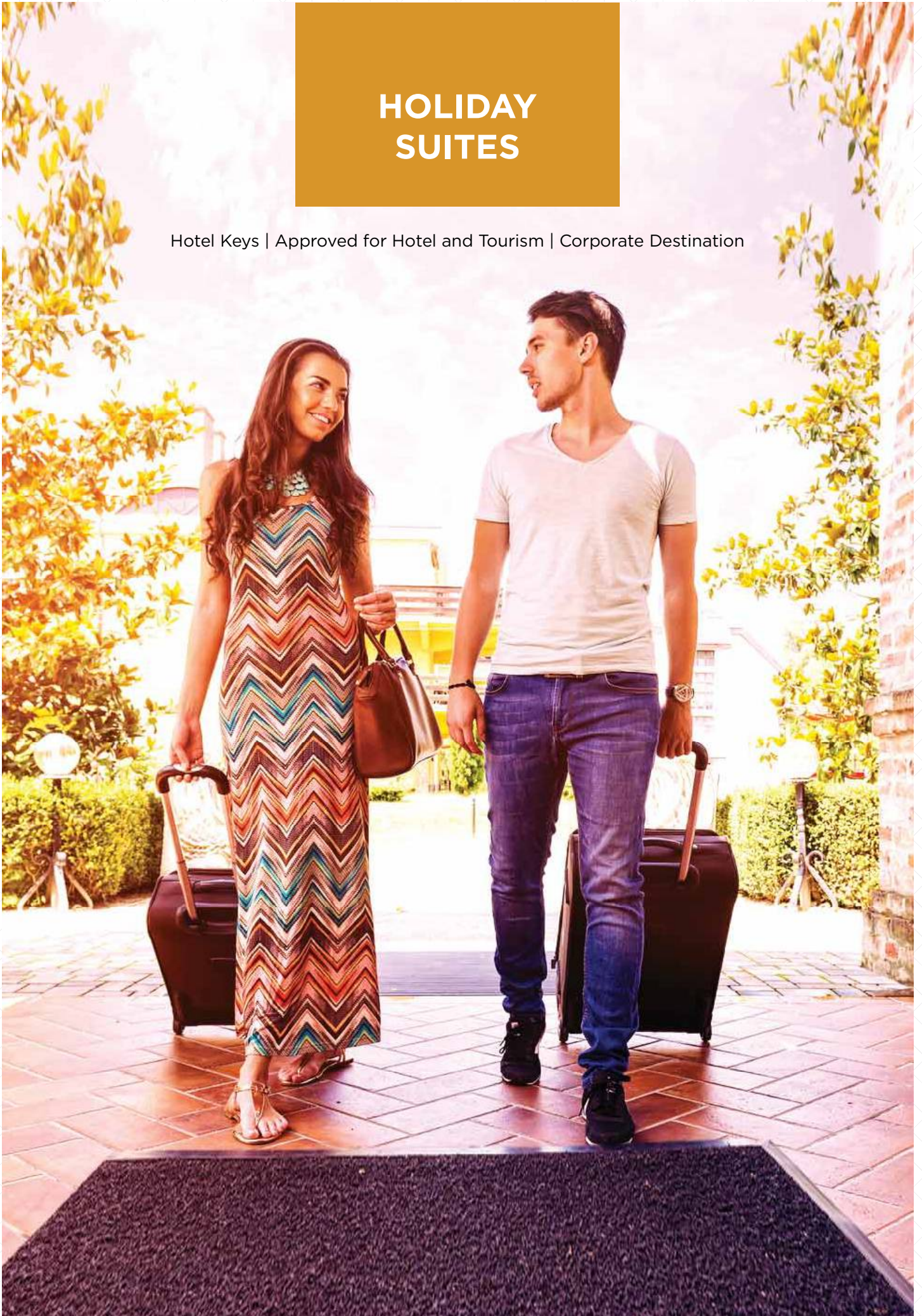
A vacationer's paradise

Axis Blues is located nearby a rain forest and surrounded by lakes and mountains, all of which are well-blended with a modern lifestyle. The multiple food joints, unmatched conveniences and premium service suites make vacationers keep coming back for more.

Laze around on dew-laced grass and enjoy lush green views. Wake up to the sounds of birds and bees. Have a majestic backdrop of the mountains. And witness magnificent sceneries, which will give you eternal peace and joy.

HOLIDAY SUITES

Hotel Keys | Approved for Hotel and Tourism | Corporate Destination





KIDS PLANET

- 24x7 Boarding creche
- Kiddie ball pool
- Bouncies
- Lego Room
- Video game rooms with VR games
- Dedicated kids' restaurant
- Fully-equipped library
- Knowledge session
- Dedicated movie shows
- Outdoor games
- Kids' pool
- Kids' sports

REJUVENATE YOURSELF

Spa facilities | Steam room | Jacuzzis | Jet showers





SPORTS

- Go Kart Track
- Team Building Sports
- Cricket Matting Pitch
- Badminton Court
- Tennis Court
- Basketball Court
- Squash



CONTEMPORARY ATTRACTIONS

- Entertainment
- Private Cinebox
- Helipad
- Nature & Landscape
- Security & Safety
- Eco-friendly





COMMUNITY ACTIVITIES

- Open Air Amphitheatre
- Banqueting
- Restaurants
- Book Cafe
- Multi-cuisine restaurants
- Living spaces for Senior citizens





RECREATION

- Go-Goa Go-Kart
- Swimming Pool
- Yoga Centre
- Health Club





Party Hubs

- SinQ Beach Club, Candolim
- LPK Waterfront, Candolim
- Club Tito's, Baga-Calangute Beach
- Cape Town Cafe, Baga-Calangute Beach

Feeling Adventurous

- Jet Skiing in Majorda Beach
- Banana Ride at Mobor Beach
- White Water Rafting at Mandovi River
- Scuba Diving at Grande Island

ENTERTAINMENT HUB

Private Cinebox | Cardroom | Open Theater



CONNECTIVITY



Airports

- Mopa Airport - 18 Min [Upcoming]
- Chipi-Parule Airport - 65 Min
- Dabolim Airport - 68 Min
- Belgaum Airport - 82 Min



Railway

- Thivim - 15 Min
- Madgaon - 69 Min
- Kudal - 50 Min
- Pernem - 25 Min



Sea & Beaches

- Mandrem Beach - 36 Min
- Vagator Beach - 31 Min
- Calangute Beach - 35 Min
- Colva Beach - 70 Min



THE FUTURE DESTINATION

The perfect corporate getaway

Whether it's business meetings, conferences or team outings, Axis Blues is the perfect destination for all corporate events. With its state-of-the-art facilities and the positive natural vibe, the development offers a world of avenues for a team-building break.

GROWTH STIMULIZER

Be a part of a flourishing hospitality industry and earn attractive returns by investing in Axis Blues. Get a lease guarantee of 3 years, which can be extended further. Enjoy fully furnished Service Suites that attract tourists, health seekers, corporates and international group tourists.



ARCHITECTURE & DESIGN

Resort Community | Clutter-Free Life | Stunning Views





Living/Dining Room

- Glazed Vitrified Tiles
- Internal walls with POP punning with plastic emulsion paint or texture finish

Bedroom

- Laminated Wooden Flooring
- Internal walls with POP punning with plastic emulsion paint or texture finish
- Modular Wooden Cupboard, safe locker

Kitchenette

- Modular Kitchenette Storage with Mini BAR, SS Sink with Drain Board, Garbage bins

INTERNAL SPECIFICATIONS

Windows

- Specially designed UPVC/Modular anodized aluminum sliding/casement shutters, Quality hardware and float glass

Toilet

- Italian marble
- Italian marble/designer tiles up to 7'-0"
- Matching wash basin with WC, Branded CP Fittings with rain shower

Lift Lobby

- Granite / Glazed Vitrified Tiles
- Plastic Emulsion Paint along with Stone/Tiles

Door

- Designer 40mm thick, moulded skin doors with Masonite skin both side or eq. , architrave and hardware

Electrical

- All electrical wiring concealed conduits, provision for adequate light and power points, telephone, TV in living room, Modular switches & MCB, intercom facility with instrument, FAN, chandelier, LED lights curtain motor







FULLY-FURNISHED

App-enable control of lights, TV, AC, Fans, Curtain mortars, Panic alert with hooter and child tracking system.

Hi speed internet, Wi-Fi, DTH, Mini Refrigerator, Microwave, Electric/ Induction Cooktop, Electric Kettle & RO, Bed with Mattress, Side Tables, intercom

2.5 Ton VRV Air Conditioning

2+3 Seater sofa, Center table, Dining table with 4 chairs, Pedestal lamp

42" Smart LED TV, Set top box with remote, Intercoms, Geyser, Exhaust fan, Toilet mirror, Vanity & Hair dryer

UNIT AREA CHART

	Usable Area	RERA Carpet	Appurtenant Area
Sq. Mt.	58.9	32	26.9
Sq. Ft.	635	348	287

CLUSTER PLAN

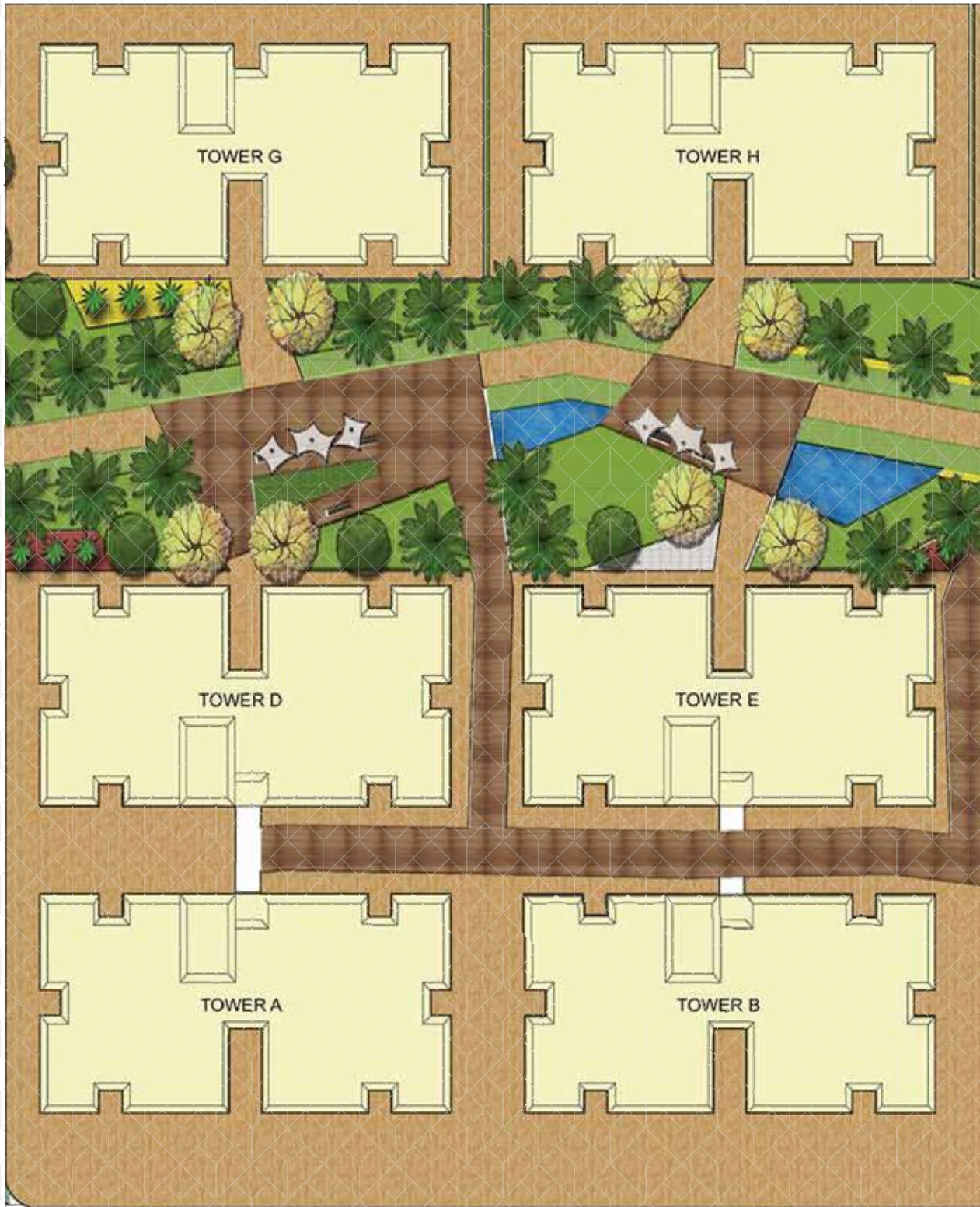




5'-6" WD CORRIDOR



TOWER PLAN





TOWER I

TOWER J

TOWER F

TOWER C

BLIND ENTRANCE



TRUST COMES FIRST

After touching milestones in education & technology, we at Axis diversified into real estate & hospitality. We are passionate about bringing quality & innovation into the industry.

At Axis, we believe building customer satisfaction is a crucial part of the business which is why we promise a hassle-free home buying experience to our customers. We have already set the benchmark via creating world class campus over 63 acre located at Kanpur.

We believe that inspired teams naturally provide excellent and dedicated client service. Therefore, we've created a workplace where opinions are respected, where everyone is invited to contribute to the success of our business and where they're rewarded for excellence.



THE TEAM BEHIND THE WALLS

Land Compliance - JPM Group

In 1981, Mr. JP Maurya set out with a vision of changing India's construction and hospitality landscape, and laid the foundation of the JP Group in the fields of licensing, Obtaining Government permissions and compliance. Being as Promoter; Axis Blues, under the guidance of Mr. JP Maurya has been striving to create more eco-friendly modern lifestyles in the lap of nature.

Architects - Space Design Group

Has more than 25 years of experience in the field of design of numerous Residential Townships & Group Housing schemes, Commercial & Retail establishments and Corporate Interiors. He is on panel of NBCC and consultant of National Insurance Co. Ltd., NABARD and South Eastern Coalfields Ltd. With over 200 projects handled since inception.

SDG has been recipient of several award.

Landscape - Pallavi Mohan Associates

Pallavi Mohan Associates (Founded in 1994) is a professional firm offering Landscape Design Consultancy Services, is presently consulting on projects in India, and abroad. Over the years the firm has collaborated successfully with a variety of co-professionals (architects, landscape architects, planners, engineers, horticulturists, artists & vendors etc.) to deliver outstanding built projects. The Work includes Grand Hyatt Goa, Raipur Smart City and Airports Authority of India.

Financials

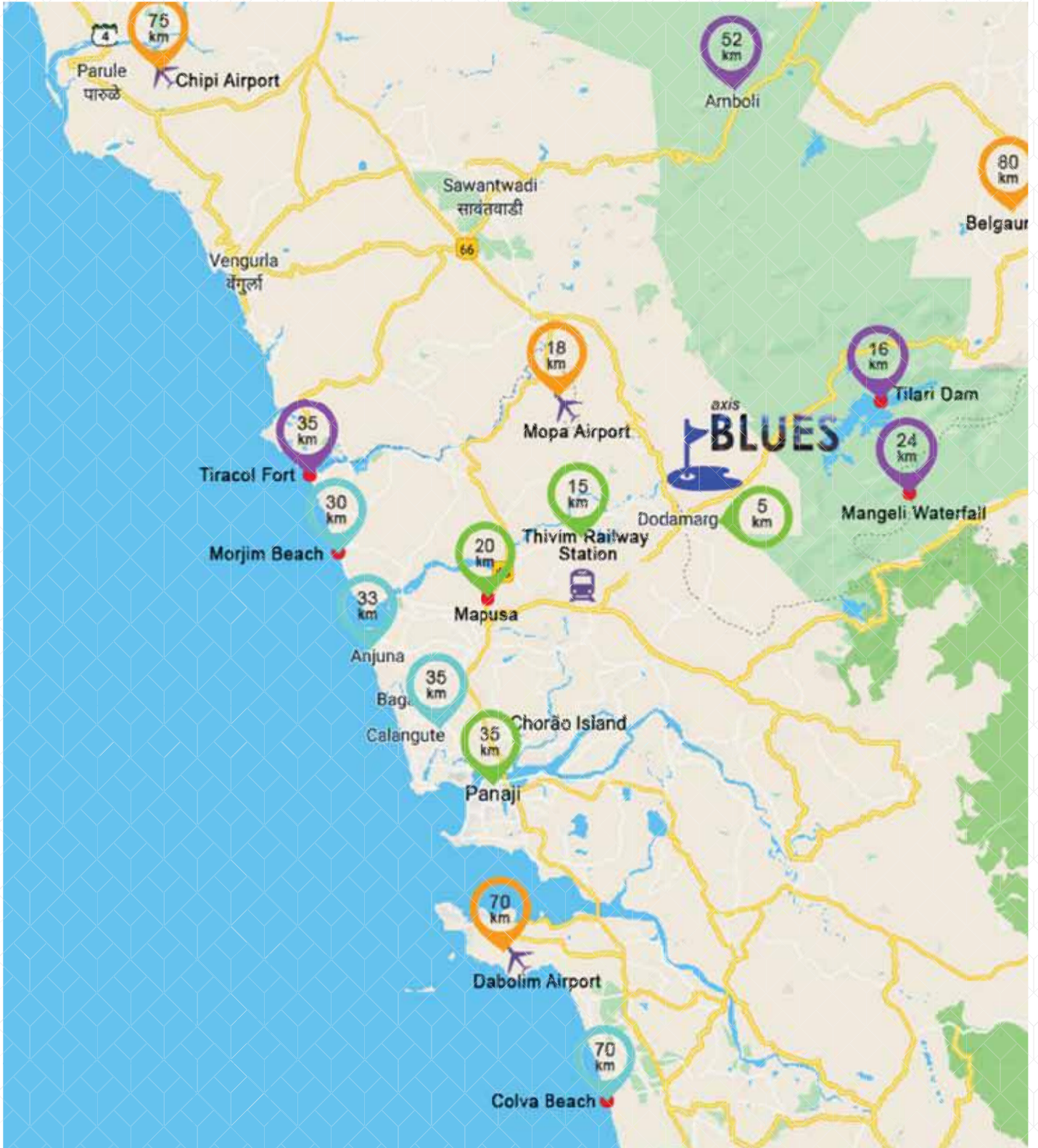
S Prakash Kushwaha & Company - Expert in accounting & business support services, statutory audit & assurance services in Delhi.

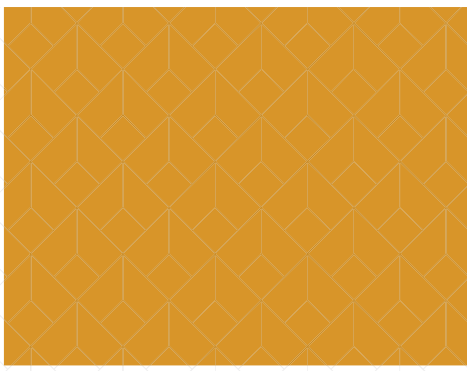
M/s. Ashok Jayesh & Associates - With experience of more than 25 years in this field, having expertise including financial and business advisory, tax and regulatory, and risk advisory services in Mumbai.

Vaastu Expert - K. Venkata Narayana Reddy

He is renowned vaastu expert and carrying the legacy from his father, the famous vaastu consultant S/o Sri. K. Jaya Ram Mohan Reddy since 70's. Mr. Venkata Narayana has immense knowledge in the Indian Science of Architecture and share innovative designs.

LOCATION





Corporate Office:
117/N/88, Kakadeo
Kanpur-208025

Noida Office:
H-134 Sector 63,
NOIDA-201301

Disclaimer

The project information provided is general in nature. The pictures, layouts, landscapes, interiors, lighting, etc. are shown as what is intended to be at the time of completion and are presently illustrations of the concept of the project, not be construed as visual representations. You are required to verify all details, including area, amenities, services, terms of sales & payments and other relevant terms independently with us and our sales team to your satisfaction prior to any purchase decision for any apartments in any of our projects.

These are conceptual in nature and despite our best efforts to attain same or still better but the outcome may vary because of transitional change in Govt regulations or unforeseen circumstances that may be best suited at that time.

Distance has calculated at 60 Km per hour.

axis ecorp

Site Office:

Axis Blues, Dodamarg,
Distt Sindhudurg, Maharashtra-416 512

Correspondence Office:

305, Gera Imperium Grand,
Patto Plaza, Panaji-403 001

For Assistance: +91 8070 00 44 00 | info@axisblues.com | www.axisblues.com

MAHARERA : P52900019883